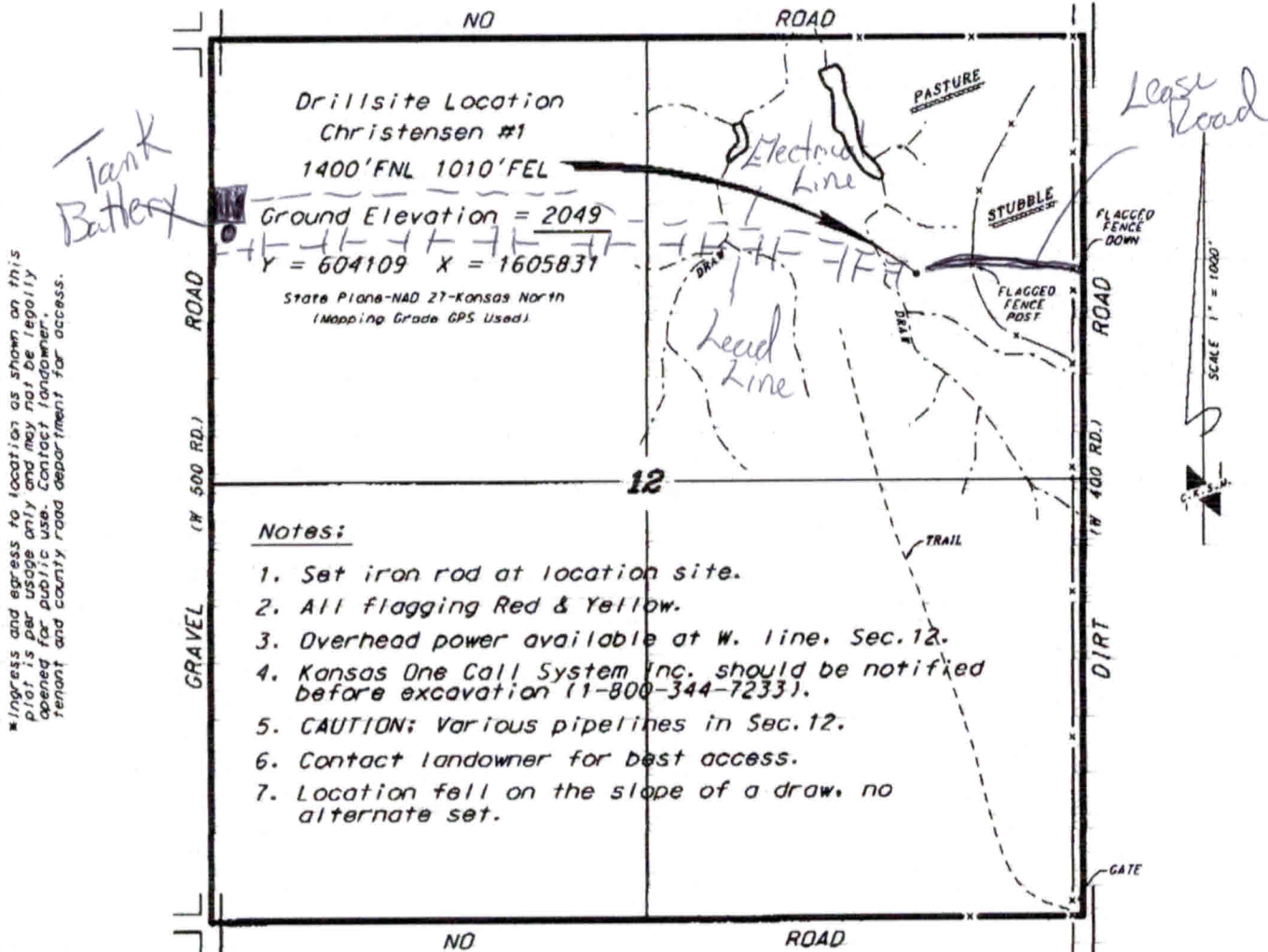
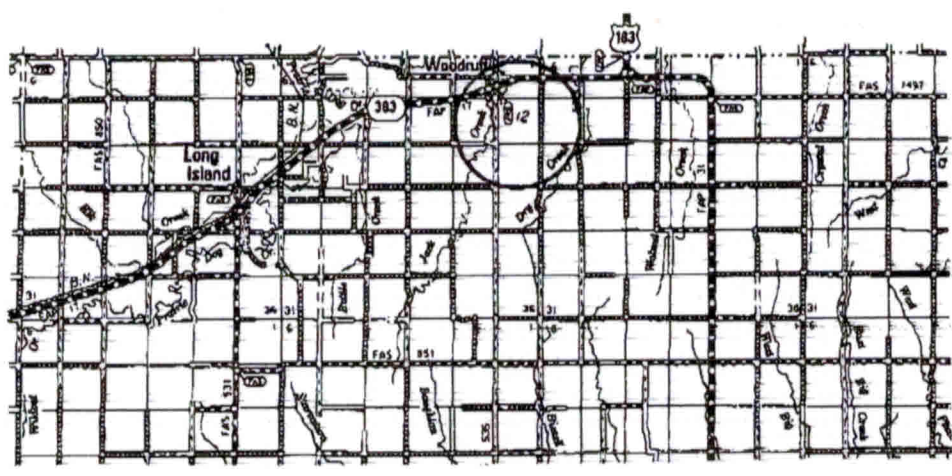


BACH OIL PRODUCTION, INC.  
CHRISTENSEN LEASE  
NE. 1/4, SECTION 12, T15, R19W  
PHILLIPS COUNTY, KANSAS



Notes:

1. Set iron rod at location site.
2. All flagging Red & Yellow.
3. Overhead power available at W. line, Sec. 12.
4. Kansas One Call System Inc. should be notified before excavation (1-800-344-7233).
5. CAUTION; Various pipelines in Sec. 12.
6. Contact landowner for best access.
7. Location fell on the slope of a draw, no alternate set.



Controlling data is based upon the best maps and photographs available to us and upon a regular section of 1000 containing 640 acres.  
Approximate section lines were determined using the normal standard of care of oilfield surveyors practicing in the state of Kansas. The section corners, which establish the precise section lines, were not necessarily located, and the exact location of the drillsite location in the section is not guaranteed. Therefore, the operator acquiring this service and occupying this plot and all other parties relying thereon agree to hold Central Kansas Oilfield Services, Inc., its officers and employees harmless from all losses, costs and expenses and said entities released from any liability from incidents or consequential damages.  
Elevations derived from National Geodetic Vertical Datum.

Date October 16, 2012