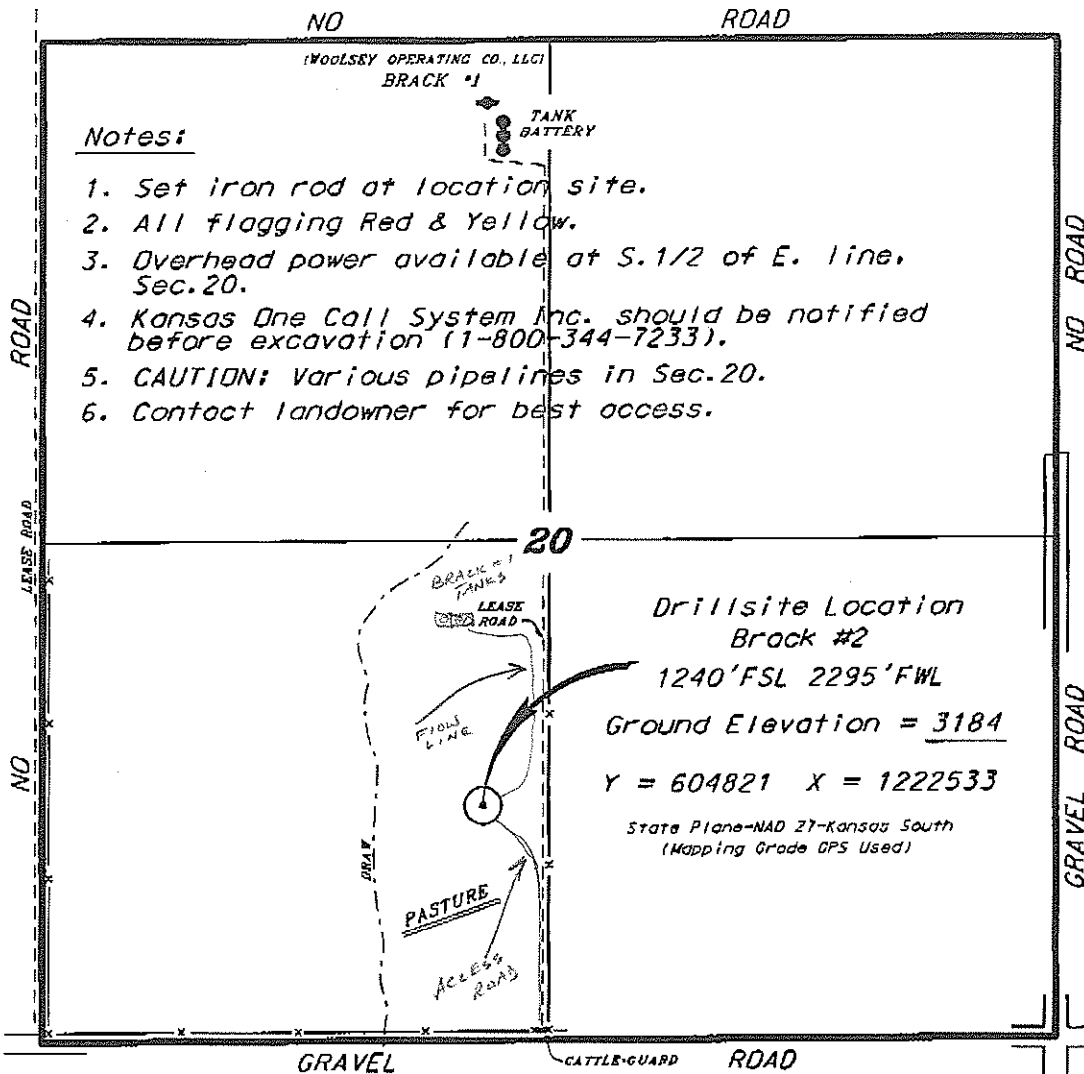


WOOLSEY OPERATING COMPANY, LLC
 BRACK LEASE
 SW. 1/4, SECTION 20, T20S, R35W
 WICHITA COUNTY, KANSAS

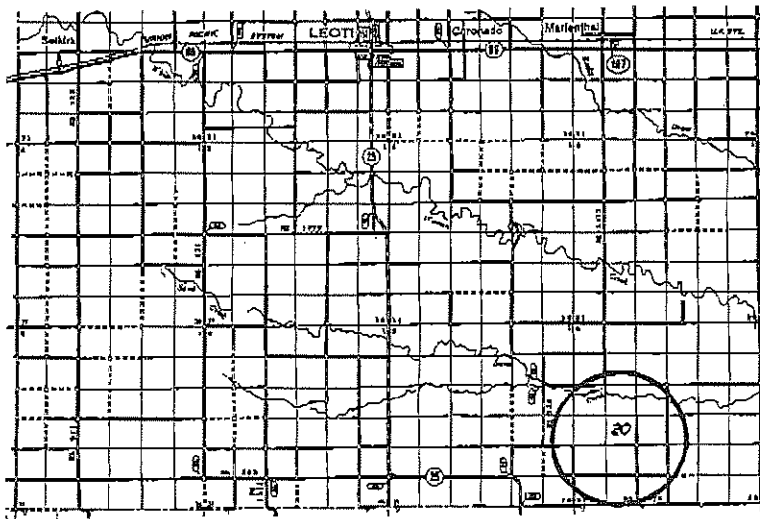
* Ingress and egress to location as shown on this plat is per usage only and may not be legally opened for public use. Contact landowner, tenant and county road department for access.



Notes:

1. Set iron rod at location site.
2. All flagging Red & Yellow.
3. Overhead power available at S. 1/2 of E. line, Sec. 20.
4. Kansas One Call System Inc. should be notified before excavation (1-800-344-7233).
5. CAUTION: Various pipelines in Sec. 20.
6. Contact landowner for best access.

Drillsite Location
 Brack #2
 1240' FSL 2295' FWL
 Ground Elevation = 3184
 Y = 604821 X = 1222533
 State Plane-NAD 27-Kansas South
 (Mapping Grade GPS Used)



Controlling data is based upon the best maps and photographs available to us and upon a regular section of land containing 640 acres.
 Approximate section lines were determined using the normal standard of care of all field surveyors practicing in the state of Kansas. The section corners, which establish the precise section lines, were not necessarily located, and the exact location of the drillsite location in the section is not guaranteed. Therefore, the operator, securing this service and accepting this plat and all other parties relying thereon agree to hold Central Kansas Drilling Services, Inc., its officers and employees harmless from all losses, costs and expenses and hold them released from any liability from negligent or consequential damages.
 Elevations derived from National Geodetic Vertical Datum.

Date November 1, 2012