



DRILL STEM TEST REPORT

Prepared For: **Bennett & Schulte Oil Co.**

PO Box 329
Russell KS 67665

ATTN: Frank Schulte

Yarmer #17-2

17-17s-14w Barton,KS

Start Date: 2012.08.13 @ 17:00:05

End Date: 2012.08.13 @ 22:09:20

Job Ticket #: 47915 DST #: 1

Trilobite Testing, Inc

PO Box 362 Hays, KS 67601

ph: 785-625-4778 fax: 785-625-5620

Printed: 2012.08.15 @ 16:18:38



TRILOBITE TESTING, INC.

DRILL STEM TEST REPORT

Bennett & Schulte Oil Co.

17-17s-14w Barton, KS

PO Box 329
Russell KS 67665

Yarmer #17-2

Job Ticket: 47915

DST#: 1

ATTN: Frank Schulte

Test Start: 2012.08.13 @ 17:00:05

GENERAL INFORMATION:

Formation: **Arbuckle**

Deviated: No Whipstock: ft (KB)

Time Tool Opened: 18:32:50

Time Test Ended: 22:09:20

Test Type: Conventional Bottom Hole (Initial)

Tester: Andy Carreira

Unit No: 39

Interval: 3410.00 ft (KB) To 3426.00 ft (KB) (TVD)

Reference Elevations: 1922.00 ft (KB)

Total Depth: 3426.00 ft (KB) (TVD)

1915.00 ft (CF)

Hole Diameter: 7.88 inches Hole Condition: Fair

KB to GR/CF: 7.00 ft

Serial #: 8372 Outside

Press @ Run Depth: 106.56 psig @ 3411.00 ft (KB)

Capacity: 8000.00 psig

Start Date: 2012.08.13

End Date: 2012.08.13

Last Calib.: 2012.08.13

Start Time: 17:00:05

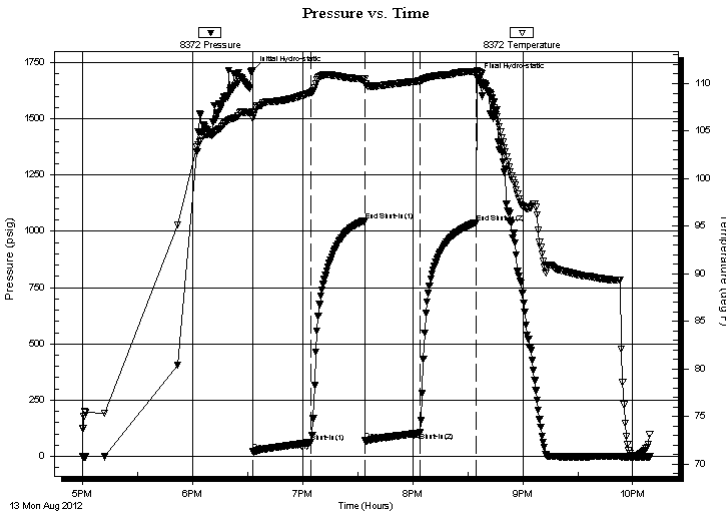
End Time: 22:09:20

Time On Btm: 2012.08.13 @ 18:32:40

Time Off Btm: 2012.08.13 @ 20:35:10

TEST COMMENT: IF:(30min) 1" in 1 min, 10" in 17 min. BOB in 22 min.
ISl:(30min) Return surface blow died in 6 min.
FF:(30min) 1" in 2 min. 10" in 27 min.
FSl:(30min) Return surface blow, died in 9 min.

PRESSURE SUMMARY



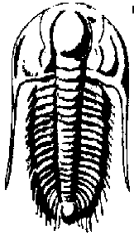
Time (Min.)	Pressure (psig)	Temp (deg F)	Annotation
0	1713.73	107.10	Initial Hydro-static
1	22.30	106.29	Open To Flow (1)
32	64.21	109.07	Shut-In(1)
62	1047.43	110.46	End Shut-In(1)
62	71.77	109.97	Open To Flow (2)
92	106.56	110.28	Shut-In(2)
123	1038.73	111.28	End Shut-In(2)
123	1683.71	111.39	Final Hydro-static

Recovery

Length (ft)	Description	Volume (bbl)
250.00	GO g=10% o=90%	3.51
0.00	GIP= 315ft	0.00

Gas Rates

Choke (inches)	Pressure (psig)	Gas Rate (Mcf/d)



TRILOBITE TESTING, INC.

DRILL STEM TEST REPORT

Bennett & Schulte Oil Co.

17-17s-14w Barton,KS

PO Box 329
Russell KS 67665

Yarmer #17-2

Job Ticket: 47915

DST#: 1

ATTN: Frank Schulte

Test Start: 2012.08.13 @ 17:00:05

GENERAL INFORMATION:

Formation: **Arbuckle**

Deviated: No Whipstock: ft (KB)

Time Tool Opened: 18:32:50

Time Test Ended: 22:09:20

Test Type: Conventional Bottom Hole (Initial)

Tester: Andy Carreira

Unit No: 39

Interval: 3410.00 ft (KB) To 3426.00 ft (KB) (TVD)

Reference Elevations: 1922.00 ft (KB)

Total Depth: 3426.00 ft (KB) (TVD)

1915.00 ft (CF)

Hole Diameter: 7.88 inches Hole Condition: Fair

KB to GR/CF: 7.00 ft

Serial #: 8017 Inside

Press @ Run Depth: psig @ 3411.00 ft (KB)

Capacity: 8000.00 psig

Start Date: 2012.08.13

End Date: 2012.08.13

Last Calib.: 2012.08.13

Start Time: 17:00:05

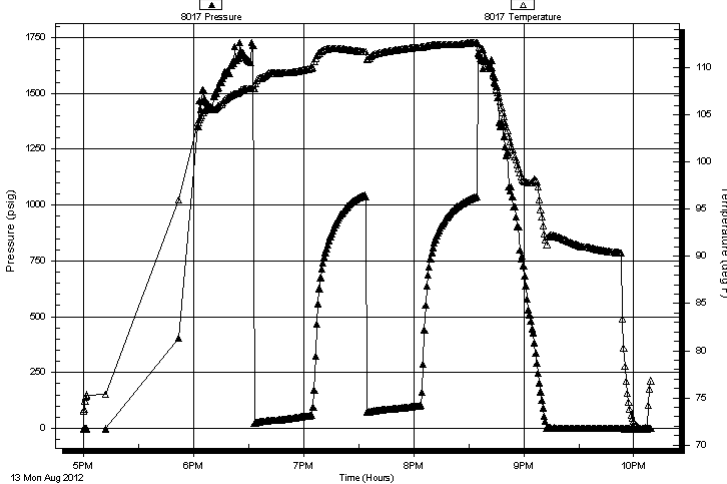
End Time: 22:09:10

Time On Btm:

Time Off Btm:

TEST COMMENT: IF:(30min) 1" in 1 min, 10" in 17 min. BOB in 22 min.
IS:(30min) Return surface blow died in 6 min.
FF:(30min) 1" in 2 min. 10" in 27 min.
FS:(30min) Return surface blow , died in 9 min.

Pressure vs. Time



PRESSURE SUMMARY

Time (Min.)	Pressure (psig)	Temp (deg F)	Annotation

Recovery

Length (ft)	Description	Volume (bbl)
250.00	GO g=10% o=90%	3.51
0.00	GIP= 315ft	0.00

Gas Rates

	Choke (inches)	Pressure (psig)	Gas Rate (Mcf/d)



**TRILOBITE
TESTING, INC.**

DRILL STEM TEST REPORT

TOOL DIAGRAM

Bennett & Schulte Oil Co.

17-17s-14w Barton,KS

PO Box 329
Russell KS 67665

Yarmer #17-2

Job Ticket: 47915

DST#: 1

ATTN: Frank Schulte

Test Start: 2012.08.13 @ 17:00:05

Tool Information

Drill Pipe:	Length: 3412.00 ft	Diameter: 3.80 inches	Volume: 47.86 bbl	Tool Weight: 2500.00 lb
Heavy Wt. Pipe:	Length: 0.00 ft	Diameter: 2.70 inches	Volume: 0.00 bbl	Weight set on Packer: 22000.00 lb
Drill Collar:	Length: 0.00 ft	Diameter: 2.25 inches	Volume: 0.00 bbl	Weight to Pull Loose: 44000.00 lb
			<u>Total Volume: 47.86 bbl</u>	Tool Chased 0.00 ft
Drill Pipe Above KB:	30.00 ft			String Weight: Initial 38000.00 lb
Depth to Top Packer:	3410.00 ft			Final 40000.00 lb
Depth to Bottom Packer:	ft			
Interval between Packers:	16.00 ft			
Tool Length:	44.00 ft			
Number of Packers:	2	Diameter: 6.75 inches		

Tool Comments:

Tool Description

Tool Description	Length (ft)	Serial No.	Position	Depth (ft)	Accum. Lengths
Change Over Sub	1.00			3383.00	
Shut In Tool	5.00			3388.00	
Hydraulic tool	5.00			3393.00	
Jars	5.00			3398.00	
Safety Joint	3.00			3401.00	
Packer	5.00			3406.00	28.00 Bottom Of Top Packer
Packer	4.00			3410.00	
Stubb	1.00			3411.00	
Recorder	0.00	8017	Inside	3411.00	
Recorder	0.00	8372	Outside	3411.00	
Perforations	12.00			3423.00	
Bullnose	3.00			3426.00	16.00 Bottom Packers & Anchor

Total Tool Length: 44.00



**TRILOBITE
TESTING, INC.**

DRILL STEM TEST REPORT

FLUID SUMMARY

Bennett & Schulte Oil Co.

17-17s-14w Barton,KS

PO Box 329
Russell KS 67665

Yarmer #17-2

Job Ticket: 47915

DST#: 1

ATTN: Frank Schulte

Test Start: 2012.08.13 @ 17:00:05

Mud and Cushion Information

Mud Type: Gel Chem

Cushion Type:

Oil API:

deg API

Mud Weight: 9.00 lb/gal

Cushion Length:

ft

Water Salinity:

ppm

Viscosity: 53.00 sec/qt

Cushion Volume:

bbbl

Water Loss: 10.38 in³

Gas Cushion Type:

Resistivity: ohm.m

Gas Cushion Pressure:

psig

Salinity: 4000.00 ppm

Filter Cake: inches

Recovery Information

Recovery Table

Length ft	Description	Volume bbl
250.00	GO g=10% o=90%	3.507
0.00	GIP= 315ft	0.000

Total Length: 250.00 ft Total Volume: 3.507 bbl

Num Fluid Samples: 0

Num Gas Bombs: 0

Serial #:

Laboratory Name:

Laboratory Location:

Recovery Comments:

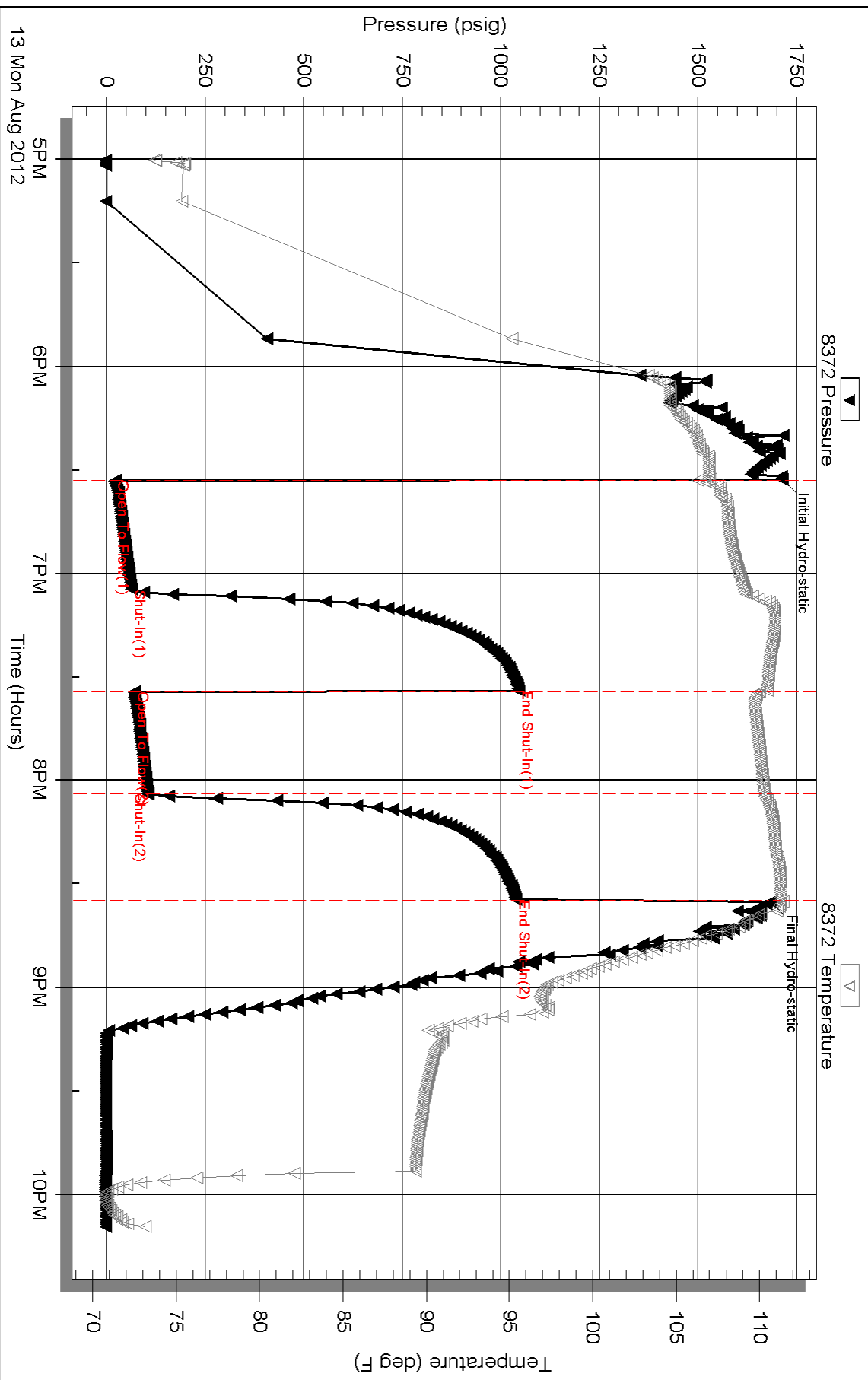
Serial #: 8372

Outside Bennett & Schulte Oil Co.

Yarner #17-2

DST Test Number: 1

Pressure vs. Time



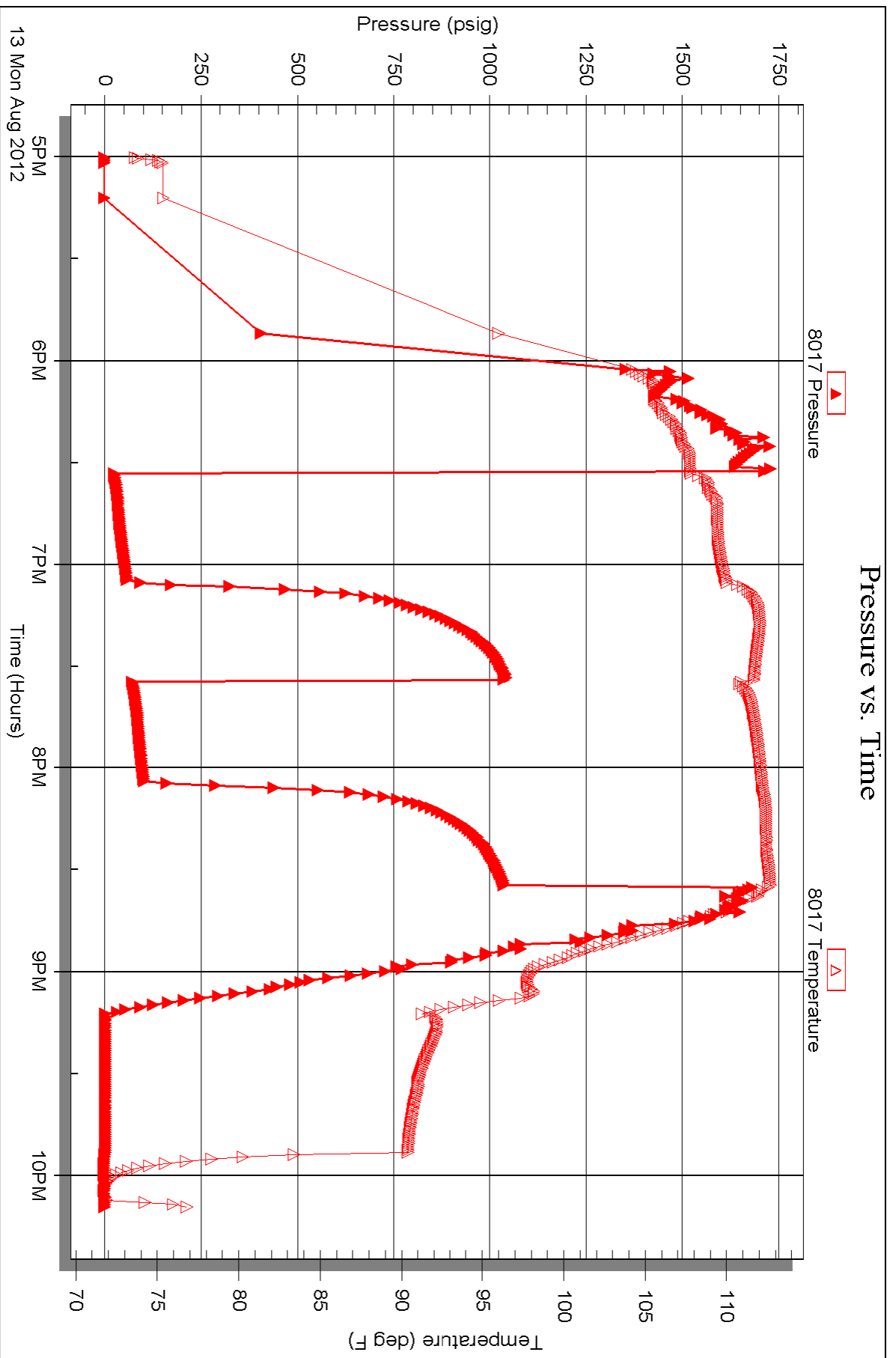
Serial #: 8017

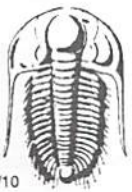
Inside

Bennett & Schulte Oil Co.

Yarner #17-2

DST Test Number: 1





TRILOBITE TESTING INC.

P.O. Box 1733 • Hays, Kansas 67601

Test Ticket

NO. 47915

Well Name & No. XARMER 17-2 Test No. 1 Date 8-13-12
 Company Bennett & Schulte oil co Elevation 1922 KB 1915 GL
 Address PO Box 329 Russell KS 67665
 Co. Rep / Geo. FRANK Schulte Rig Royal #2
 Location: Sec. 17 Twp. 17S Rge. 14W Co. Barton State Ks

Interval Tested 3410 - 3426 Zone Tested Ne buckle
 Anchor Length 16' Drill Pipe Run 3412 Mud Wt. 9.4
 Top Packer Depth 3405 Drill Collars Run 0 Vis 53
 Bottom Packer Depth 3410 Wt. Pipe Run 0 WL 10.4
 Total Depth 3426 Chlorides 4000 ppm System LCM 1#

Blow Description IF: 1" in 1min, 10" in 17min, BoB 22min.
FSB: Return surface blow died in 6min
FF: 1" in 2min, 10" in 27min.
FSD: Return surface blow, died in 9min

Rec	Feet of	%gas	%oil	%water	%mud
<u>250</u>	<u>30</u>	<u>10%</u>	<u>90%</u>		
Rec	Feet of	%gas	%oil	%water	%mud
<u>315</u>	<u>31P</u>				
Rec	Feet of	%gas	%oil	%water	%mud
Rec	Feet of	%gas	%oil	%water	%mud

Rec Total 250 BHT 111° Gravity 36 API RW @ _____ °F Chlorides _____ ppm

(A) Initial Hydrostatic 1713 Test 1150 T-On Location 16:00
 (B) First Initial Flow 22 Jars 250 T-Started 17:00
 (C) First Final Flow 64 Safety Joint 75 T-Open 18:34
 (D) Initial Shut-In 1047 Circ Sub T-Pulled 20:34
 (E) Second Initial Flow 71 Hourly Standby T-Out 10:10
 (F) Second Final Flow 106 Mileage 92RT 142.60 Comments _____
 (G) Final Shut-In 1038 Sampler _____
 (H) Final Hydrostatic 1683 Straddle _____
 Shale Packer _____
 Extra Packer _____
 Extra Recorder _____
 Day Standby _____
 Accessibility _____

Initial Open 30 Ruined Shale Packer _____
 Initial Shut-In 30 Ruined Packer _____
 Final Flow 30 Extra Copies _____
 Final Shut-In 30 Sub Total 0
 Total 1617.60
 Sub Total 1617.60 MP/DST Disc't _____

Approved By _____ Our Representative [Signature]

Trilobite Testing Inc. shall not be liable for damaged of any kind of the property or personnel of the one for whom a test is made, or for any loss suffered or sustained, directly or indirectly, through the use of its equipment, or its statements or opinion concerning the results of any test, tools lost or damaged in the hole shall be paid for at cost by the party for whom the test is made.