



Notice: Fill out COMPLETELY and return to Conservation Division at the address below within 60 days from plugging date.

KANSAS CORPORATION COMMISSION 1096974
OIL & GAS CONSERVATION DIVISION

Form CP-4
March 2009

Type or Print on this Form
Form must be Signed
All blanks must be Filled

WELL PLUGGING RECORD
K.A.R. 82-3-117

OPERATOR: License #: _____
 Name: _____
 Address 1: _____
 Address 2: _____
 City: _____ State: _____ Zip: _____ + _____
 Contact Person: _____
 Phone: (_____) _____
 Type of Well: (Check one) Oil Well Gas Well OG D&A Cathodic
 Water Supply Well Other: _____ SWD Permit #: _____
 ENHR Permit #: _____ Gas Storage Permit #: _____
 Is ACO-1 filed? Yes No If not, is well log attached? Yes No
 Producing Formation(s): List All (If needed attach another sheet)
 _____ Depth to Top: _____ Bottom: _____ T.D. _____
 _____ Depth to Top: _____ Bottom: _____ T.D. _____
 _____ Depth to Top: _____ Bottom: _____ T.D. _____

API No. 15 - _____
 Spot Description: _____
 _____ - _____ - _____ Sec. _____ Twp. _____ S. R. _____ East West
 _____ Feet from North / South Line of Section
 _____ Feet from East / West Line of Section
 Footages Calculated from Nearest Outside Section Corner:
 NE NW SE SW
 County: _____
 Lease Name: _____ Well #: _____
 Date Well Completed: _____
 The plugging proposal was approved on: _____ (Date)
 by: _____ (KCC District Agent's Name)
 Plugging Commenced: _____
 Plugging Completed: _____

Show depth and thickness of all water, oil and gas formations.

Oil, Gas or Water Records		Casing Record (Surface, Conductor & Production)			
Formation	Content	Casing	Size	Setting Depth	Pulled Out

Describe in detail the manner in which the well is plugged, indicating where the mud fluid was placed and the method or methods used in introducing it into the hole. If cement or other plugs were used, state the character of same depth placed from (bottom), to (top) for each plug set.

Plugging Contractor License #: _____ Name: _____
 Address 1: _____ Address 2: _____
 City: _____ State: _____ Zip: _____ + _____
 Phone: (_____) _____
 Name of Party Responsible for Plugging Fees: _____
 State of _____ County, _____, ss.
 _____ Employee of Operator or Operator on above-described well,
 (Print Name)

being first duly sworn on oath, says: That I have knowledge of the facts statements, and matters herein contained, and the log of the above-described well is as filed, and the same are true and correct, so help me God.

Submitted Electronically

Mail to: KCC - Conservation Division, 130 S. Market - Room 2078, Wichita, Kansas 67202



DRILL STEM TEST REPORT

Prepared For: **Palomino Petroleum Inc**

4924 SE 8457
Newton KS 67114

ATTN: Ryan Seib

Tornado #1

8-17s-26w Ness,KS

Start Date: 2012.08.26 @ 00:21:39

End Date: 2012.08.26 @ 07:45:39

Job Ticket #: 50006 DST #: 1

Trilobite Testing, Inc
PO Box 362 Hays, KS 67601
ph: 785-625-4778 fax: 785-625-5620

Printed: 2012.09.11 @ 08:19:43



TRILOBITE TESTING, INC.

DRILL STEM TEST REPORT

Palomino Petroleum Inc
 4924 SE 8457
 New ton KS 67114
 ATTN: Ryan Seib

8-17s-26w Ness,KS

Tornado #1

Job Ticket: 50006

DST#: 1

Test Start: 2012.08.26 @ 00:21:39

GENERAL INFORMATION:

Formation: **Toronto**

Deviated: No Whipstock: ft (KB)

Time Tool Opened: 03:34:09

Time Test Ended: 07:45:39

Test Type: Conventional Bottom Hole (Initial)

Tester: Tate Lang

Unit No: 53

Interval: 3892.00 ft (KB) To 3962.00 ft (KB) (TVD)

Reference Elevations: 2629.00 ft (KB)

Total Depth: 3962.00 ft (KB) (TVD)

2620.00 ft (CF)

Hole Diameter: 7.88 inches Hole Condition: Good

KB to GR/CF: 9.00 ft

Serial #: 8677 Inside

Press @ Run Depth: 179.09 psig @ 3893.00 ft (KB)

Capacity: 8000.00 psig

Start Date: 2012.08.26

End Date:

2012.08.26

Last Calib.:

2012.08.26

Start Time: 00:21:44

End Time:

07:45:38

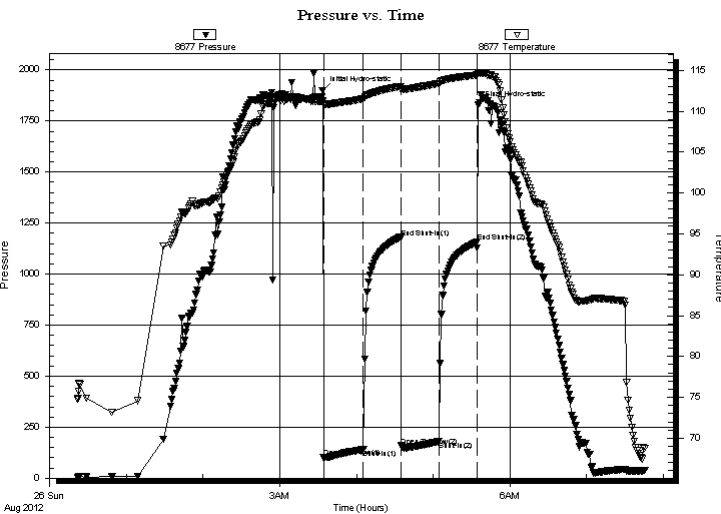
Time On Btm:

2012.08.26 @ 03:33:39

Time Off Btm:

2012.08.26 @ 05:35:09

TEST COMMENT: IF-Fair Blow Built To 5" (Had 15' of fill chased to bottom had to pick up and make another Joint up to get to bottom)
 ISI-Dead No Return
 FF-Weak Surface Blow Built to 2"
 FSI-Dead No Return



PRESSURE SUMMARY

Time (Min.)	Pressure (psig)	Temp (deg F)	Annotation
0	1897.68	111.23	Initial Hydro-static
1	100.02	110.78	Open To Flow (1)
32	140.57	111.56	Shut-In(1)
61	1179.69	113.05	End Shut-In(1)
62	158.74	112.66	Open To Flow (2)
91	179.09	113.41	Shut-In(2)
121	1155.91	114.42	End Shut-In(2)
122	1827.15	114.62	Final Hydro-static

Recovery

Length (ft)	Description	Volume (bbl)
247.00	MCW 30%M 70%W	1.21
62.00	100% Mud	0.30

Gas Rates

Choke (inches)	Pressure (psig)	Gas Rate (Mcf/d)



**TRILOBITE
TESTING, INC.**

DRILL STEM TEST REPORT

TOOL DIAGRAM

Palomino Petroleum Inc

8-17s-26w Ness,KS

4924 SE 8457
New ton KS 67114

Tornado #1

Job Ticket: 50006

DST#: 1

ATTN: Ryan Seib

Test Start: 2012.08.26 @ 00:21:39

Tool Information

Drill Pipe:	Length: 3582.00 ft	Diameter: 3.80 inches	Volume: 50.25 bbl	Tool Weight:	2500.00 lb
Heavy Wt. Pipe:	Length: 0.00 ft	Diameter: 0.00 inches	Volume: 0.00 bbl	Weight set on Packer:	20000.00 lb
Drill Collar:	Length: 309.00 ft	Diameter: 2.25 inches	Volume: 1.52 bbl	Weight to Pull Loose:	78000.00 lb
			<u>Total Volume: 51.77 bbl</u>	Tool Chased	15.00 ft
Drill Pipe Above KB:	26.00 ft			String Weight: Initial	62000.00 lb
Depth to Top Packer:	3892.00 ft			Final	62000.00 lb
Depth to Bottom Packer:	ft				
Interval between Packers:	70.00 ft				
Tool Length:	97.00 ft				
Number of Packers:	2	Diameter:	6.75 inches		
Tool Comments:					

Tool Description

Tool Description	Length (ft)	Serial No.	Position	Depth (ft)	Accum. Lengths
Change Over Sub	1.00			3866.00	
Shut In Tool	5.00			3871.00	
Hydraulic tool	5.00			3876.00	
Jars	5.00			3881.00	
Safety Joint	2.00			3883.00	
Packer	5.00			3888.00	27.00 Bottom Of Top Packer
Packer	4.00			3892.00	
Stubb	1.00			3893.00	
Recorder	0.00	8677	Inside	3893.00	
Recorder	0.00	8522	Outside	3893.00	
Perforations	1.00			3894.00	
Change Over Sub	1.00			3895.00	
Drill Pipe	63.00			3958.00	
Change Over Sub	1.00			3959.00	
Bullnose	3.00			3962.00	70.00 Bottom Packers & Anchor

Total Tool Length: 97.00



**TRILOBITE
TESTING, INC.**

DRILL STEM TEST REPORT

FLUID SUMMARY

Palomino Petroleum Inc

8-17s-26w Ness,KS

4924 SE 8457
New ton KS 67114

Tornado #1

Job Ticket: 50006

DST#: 1

ATTN: Ryan Seib

Test Start: 2012.08.26 @ 00:21:39

Mud and Cushion Information

Mud Type: Gel Chem

Cushion Type:

Oil API:

deg API

Mud Weight: 9.00 lb/gal

Cushion Length: ft

Water Salinity: ppm

Viscosity: 49.00 sec/qt

Cushion Volume: bbl

Water Loss: 8.73 in³

Gas Cushion Type:

Resistivity: ohm.m

Gas Cushion Pressure: psig

Salinity: 3100.00 ppm

Filter Cake: 1.00 inches

Recovery Information

Recovery Table

Length ft	Description	Volume bbl
247.00	MCW 30%M 70%W	1.215
62.00	100% Mud	0.305

Total Length: 309.00 ft Total Volume: 1.520 bbl

Num Fluid Samples: 0

Num Gas Bombs: 0

Serial #:

Laboratory Name:

Laboratory Location:

Recovery Comments:

Serial #: 8677

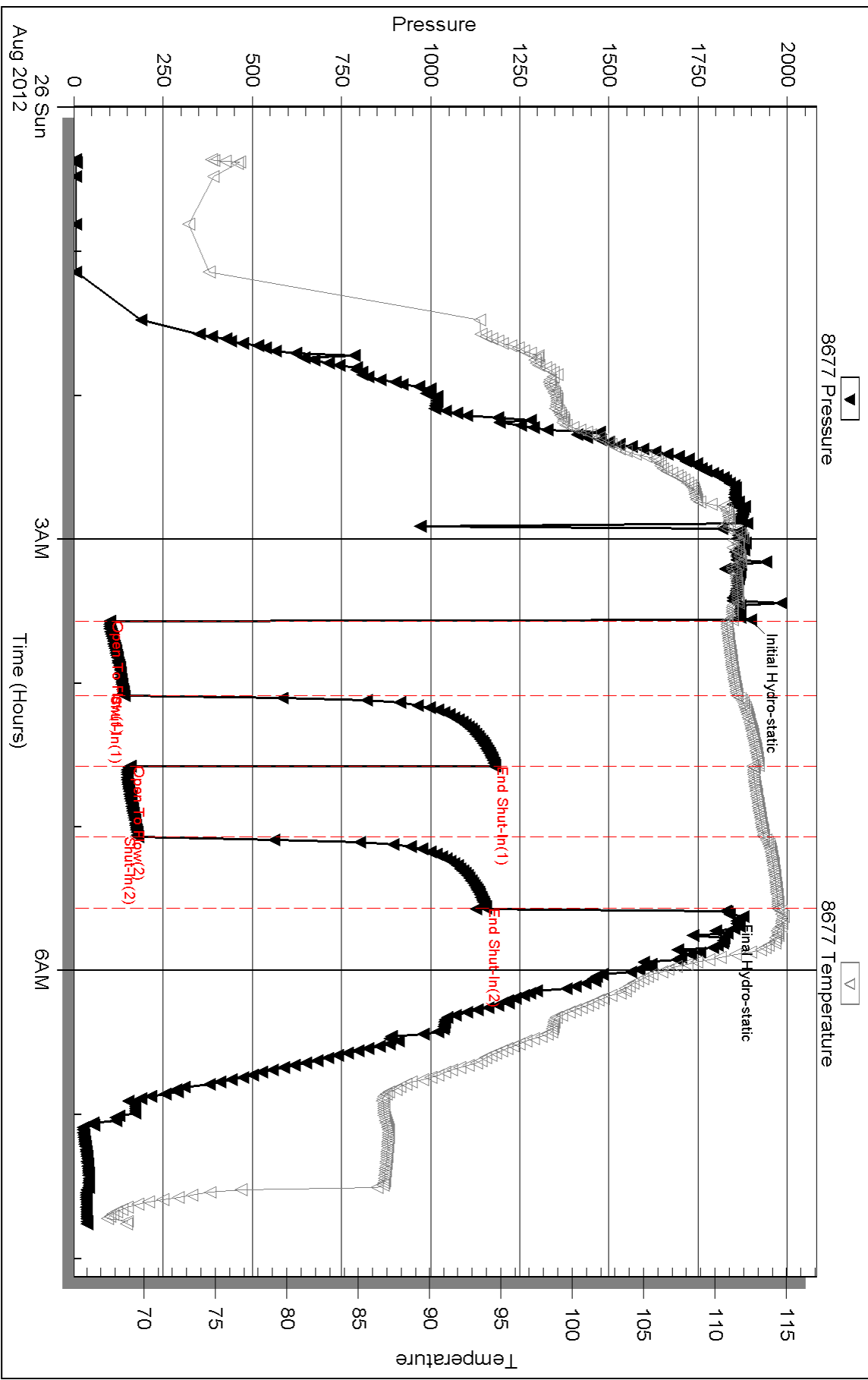
Inside

Palomino Petroleum Inc

Tornado #1

DST Test Number: 1

Pressure vs. Time



Triobite Testing, Inc

Ref. No: 50006

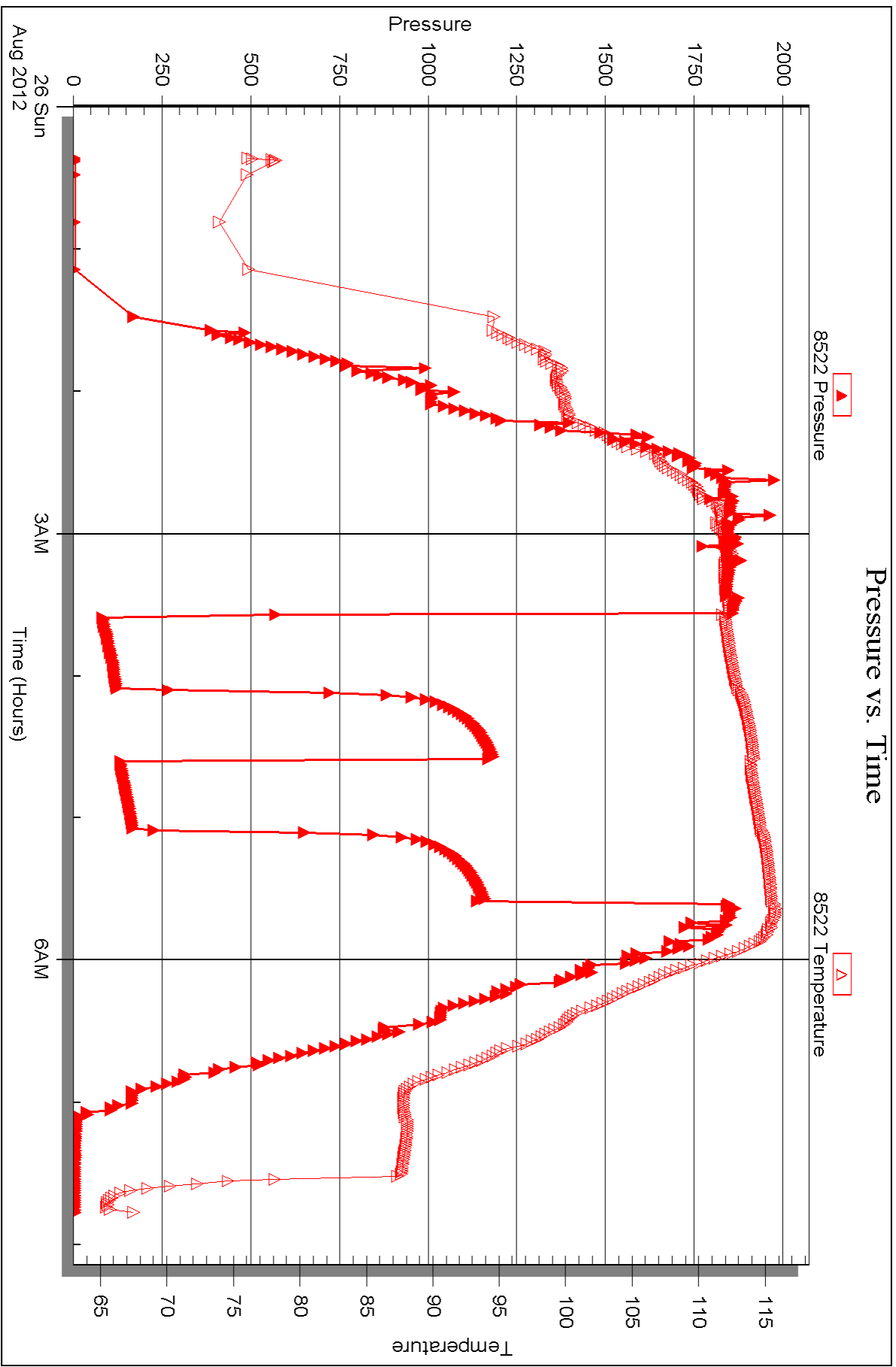
Printed: 2012.09.11 @ 08:19:47

Serial #: 8522

Outside Palomino Petroleum Inc

Tornado #1

DST Test Number: 1





DRILL STEM TEST REPORT

Prepared For: **Palomino Petroleum Inc**

4924 SE 8457
Newton KS 67114

ATTN: Ryan Seib

Tornado #1

8-17s-26w Ness,KS

Start Date: 2012.08.27 @ 03:35:30

End Date: 2012.08.27 @ 10:05:30

Job Ticket #: 50007 DST #: 2

Trilobite Testing, Inc
PO Box 362 Hays, KS 67601
ph: 785-625-4778 fax: 785-625-5620

Printed: 2012.09.10 @ 16:31:58



**TRILOBITE
TESTING, INC.**

DRILL STEM TEST REPORT

Palomino Petroleum Inc

8-17s-26w Ness, KS

4924 SE 8457
New ton KS 67114

Tornado #1

Job Ticket: 50007

DST#: 2

ATTN: Ryan Seib

Test Start: 2012.08.27 @ 03:35:30

GENERAL INFORMATION:

Formation: **Lansing**

Deviated: No Whipstock: ft (KB)

Time Tool Opened: 05:48:00

Time Test Ended: 10:05:30

Test Type: Conventional Bottom Hole (Reset)

Tester: Tate Lang

Unit No: 53

Interval: 4091.00 ft (KB) To 4198.00 ft (KB) (TVD)

Reference Elevations: 2629.00 ft (KB)

Total Depth: 4198.00 ft (KB) (TVD)

2620.00 ft (CF)

Hole Diameter: 7.88 inches Hole Condition: Good

KB to GR/CF: 9.00 ft

Serial #: 8677

Inside

Press @ RunDepth: 129.03 psig @ 4099.00 ft (KB)

Capacity: 8000.00 psig

Start Date: 2012.08.27

End Date:

2012.08.27

Last Calib.:

2012.08.27

Start Time:

03:35:35

End Time:

10:05:29

Time On Btm:

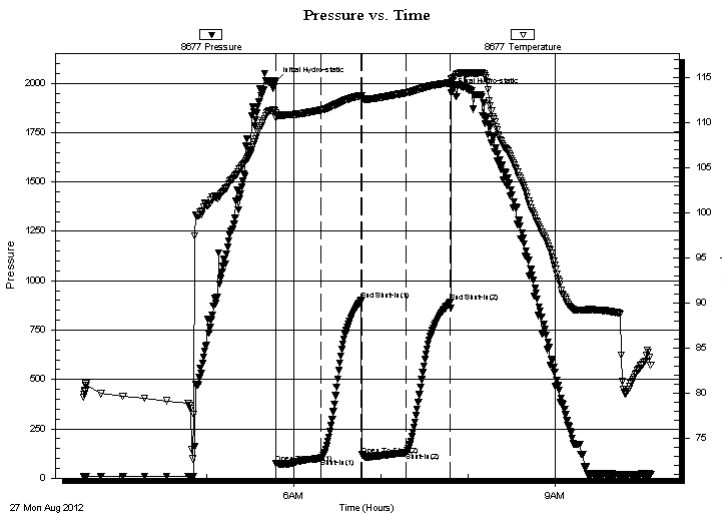
2012.08.27 @ 05:47:30

Time Off Btm:

2012.08.27 @ 07:48:30

TEST COMMENT: IF-Fair Surface Blow Built To 4 3/4"
ISI-Dead No Blow Back
FF-Fair Surface Blow Built Built To 7"
FSI-Weak Surface Blow Died Out In 18 mins

PRESSURE SUMMARY



Time (Min.)	Pressure (psig)	Temp (deg F)	Annotation
0	2007.65	111.03	Initial Hydro-static
1	74.25	110.54	Open To Flow (1)
31	100.75	111.36	Shut-In(1)
59	900.25	112.96	End Shut-In(1)
60	118.33	112.67	Open To Flow (2)
90	129.03	113.26	Shut-In(2)
121	891.07	114.40	End Shut-In(2)
121	1954.85	114.88	Final Hydro-static

Recovery

Length (ft)	Description	Volume (bbl)
124.00	100% M With Oil Spots	0.61
62.00	5%O 95%M	0.30
62.00	10%O 70%M 20%G	0.30
0.00	372' Weak GIP	0.00
0.00	62' Strong GIP	0.00

Gas Rates

	Choke (inches)	Pressure (psig)	Gas Rate (Mcf/d)

* Recovery from multiple tests



**TRILOBITE
TESTING, INC.**

DRILL STEM TEST REPORT

TOOL DIAGRAM

Palomino Petroleum Inc

8-17s-26w Ness,KS

4924 SE 8457
New ton KS 67114

Tornado #1

Job Ticket: 50007

DST#: 2

ATTN: Ryan Seib

Test Start: 2012.08.27 @ 03:35:30

Tool Information

Drill Pipe:	Length: 3769.00 ft	Diameter: 3.80 inches	Volume: 52.87 bbl	Tool Weight: 2500.00 lb
Heavy Wt. Pipe:	Length: 0.00 ft	Diameter: 0.00 inches	Volume: 0.00 bbl	Weight set on Packer: 20000.00 lb
Drill Collar:	Length: 309.00 ft	Diameter: 2.25 inches	Volume: 1.52 bbl	Weight to Pull Loose: 80000.00 lb
			<u>Total Volume: 54.39 bbl</u>	Tool Chased 4.00 ft
Drill Pipe Above KB:	14.00 ft			String Weight: Initial 64000.00 lb
Depth to Top Packer:	4091.00 ft			Final 66000.00 lb
Depth to Bottom Packer:	ft			
Interval between Packers:	107.00 ft			
Tool Length:	134.00 ft			
Number of Packers:	2	Diameter: 6.75 inches		

Tool Comments:

Tool Description

Tool Description	Length (ft)	Serial No.	Position	Depth (ft)	Accum. Lengths
Change Over Sub	1.00			4065.00	
Shut In Tool	5.00			4070.00	
Hydraulic tool	5.00			4075.00	
Jars	5.00			4080.00	
Safety Joint	2.00			4082.00	
Packer	5.00			4087.00	27.00 Bottom Of Top Packer
Packer	4.00			4091.00	
Stubb	1.00			4092.00	
Perforations	7.00			4099.00	
Recorder	0.00	8677	Inside	4099.00	
Recorder	0.00	8522	Outside	4099.00	
Change Over Sub	1.00			4100.00	
Drill Pipe	63.00			4163.00	
Drill Pipe	31.00			4194.00	
Change Over Sub	1.00			4195.00	
Bullnose	3.00			4198.00	107.00 Bottom Packers & Anchor
Total Tool Length:	134.00				



**TRILOBITE
TESTING, INC.**

DRILL STEM TEST REPORT

FLUID SUMMARY

Palomino Petroleum Inc

8-17s-26w Ness,KS

4924 SE 8457
New ton KS 67114

Tornado #1

Job Ticket: 50007

DST#: 2

ATTN: Ryan Seib

Test Start: 2012.08.27 @ 03:35:30

Mud and Cushion Information

Mud Type: Gel Chem

Cushion Type:

Oil API:

deg API

Mud Weight: 9.00 lb/gal

Cushion Length:

ft

Water Salinity:

ppm

Viscosity: 52.00 sec/qt

Cushion Volume:

bbbl

Water Loss: 8.75 in³

Gas Cushion Type:

Resistivity: 5900.00 ohm.m

Gas Cushion Pressure:

psig

Salinity: 5700.00 ppm

Filter Cake: 1.00 inches

Recovery Information

Recovery Table

Length ft	Description	Volume bbbl
124.00	100% M With Oil Spots	0.610
62.00	5%O 95%M	0.305
62.00	10%O 70%M 20%G	0.305
0.00	372' Weak GIP	0.000
0.00	62' Strong GIP	0.000

Total Length: 248.00 ft

Total Volume: 1.220 bbl

Num Fluid Samples: 0

Num Gas Bombs: 0

Serial #:

Laboratory Name:

Laboratory Location:

Recovery Comments:

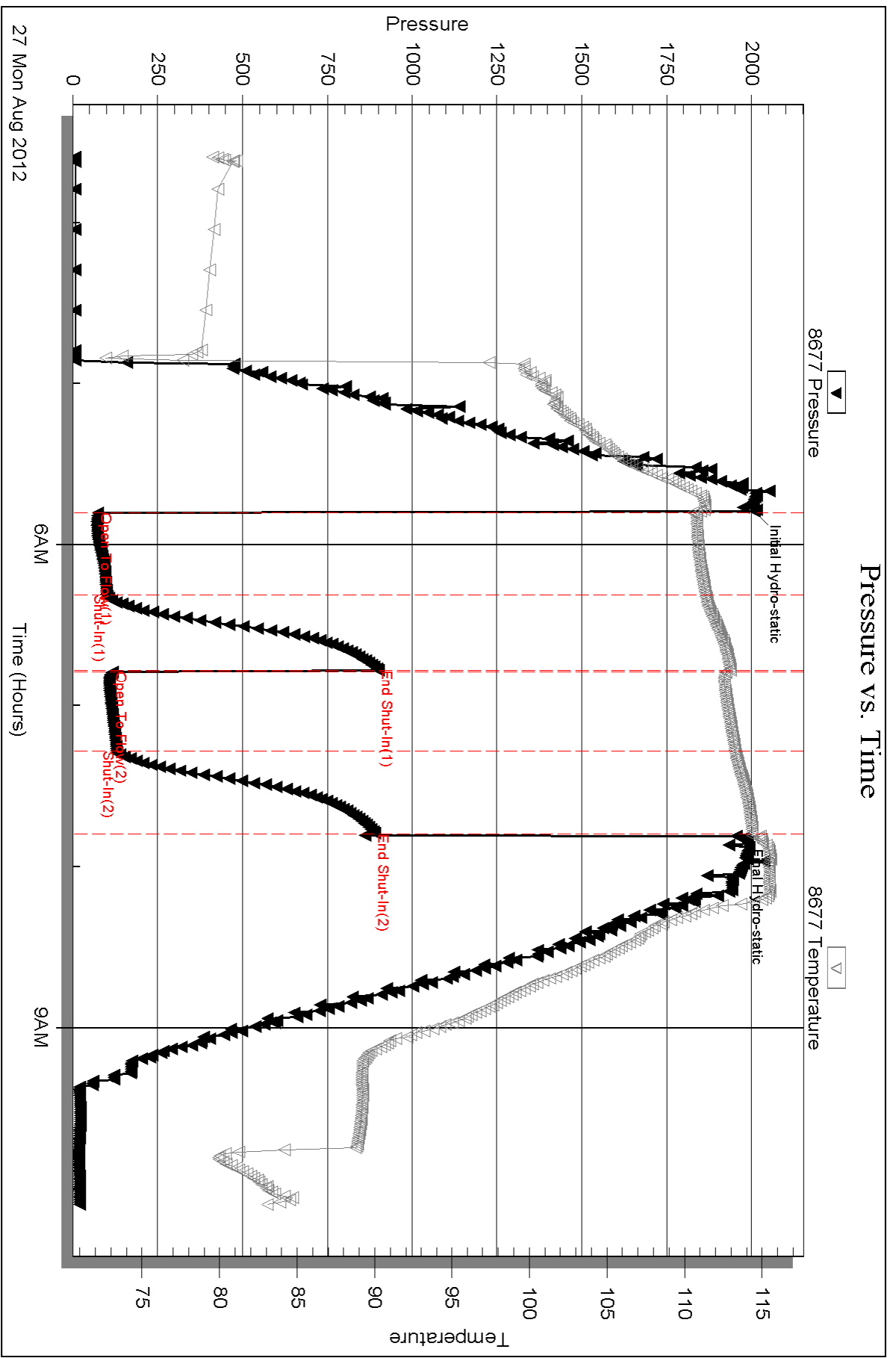
Serial #: 8677

Inside

Palomino Petroleum Inc

Tornado #1

DST Test Number: 2



Triobite Testing, Inc

Ref. No: 50007

Printed: 2012.09.10 @ 16:32:02



DRILL STEM TEST REPORT

Prepared For: **Palomino Petroleum Inc**

4924 SE 8457
Newton KS 67114

ATTN: Ryan Seib

Tornado #1

8-17s-26w Ness,KS

Start Date: 2012.08.27 @ 20:07:36

End Date: 2012.08.28 @ 03:12:36

Job Ticket #: 50008 DST #: 3

Trilobite Testing, Inc
PO Box 362 Hays, KS 67601
ph: 785-625-4778 fax: 785-625-5620

Printed: 2012.09.10 @ 16:31:13



**TRILOBITE
TESTING, INC.**

DRILL STEM TEST REPORT

Palomino Petroleum Inc
4924 SE 8457
New ton KS 67114
ATTN: Ryan Seib

8-17s-26w Ness,KS

Tornado #1

Job Ticket: 50008

DST#: 3

Test Start: 2012.08.27 @ 20:07:36

GENERAL INFORMATION:

Formation: **Lansing**

Deviated: No Whipstock: ft (KB)

Time Tool Opened: 23:00:21

Time Test Ended: 03:12:36

Test Type: Conventional Bottom Hole (Reset)

Tester: Tate Lang

Unit No: 53

Interval: 4180.00 ft (KB) To 4255.00 ft (KB) (TVD)

Reference Elevations: 2629.00 ft (KB)

Total Depth: 4255.00 ft (KB) (TVD)

2620.00 ft (CF)

Hole Diameter: 7.88 inches Hole Condition: Good

KB to GR/CF: 9.00 ft

Serial #: 8677

Inside

Press @ Run Depth: 129.07 psig @ 4187.00 ft (KB)

Capacity: 8000.00 psig

Start Date: 2012.08.27

End Date:

2012.08.28

Last Calib.:

2012.08.28

Start Time: 20:07:41

End Time:

03:12:35

Time On Btm:

2012.08.27 @ 23:00:06

Time Off Btm:

2012.08.28 @ 01:02:06

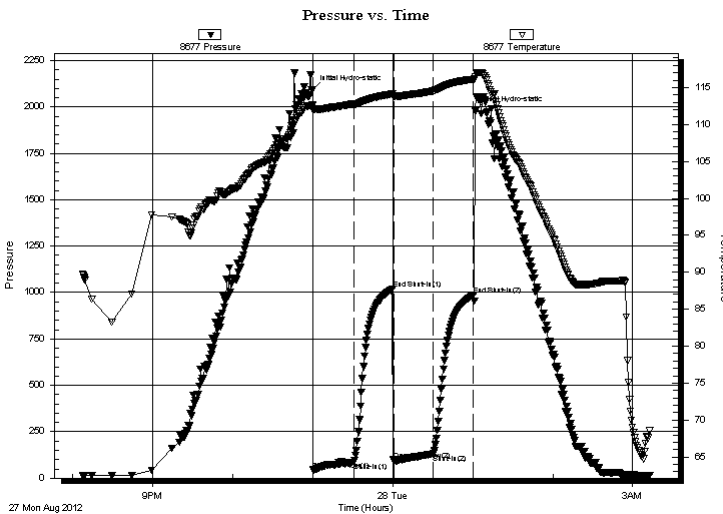
TEST COMMENT: IF-Weak Surface Blow Built to 4"

ISI-Dead No Return

FF-B.O.B. 29 mins.

FSI-Dead No Return

PRESSURE SUMMARY



Time (Min.)	Pressure (psig)	Temp (deg F)	Annotation
0	2093.68	112.61	Initial Hydro-static
1	44.09	111.93	Open To Flow (1)
31	84.21	112.73	Shut-In(1)
60	1019.44	114.12	End Shut-In(1)
61	94.31	113.82	Open To Flow (2)
91	129.07	114.53	Shut-In(2)
121	986.21	116.11	End Shut-In(2)
122	1977.26	116.50	Final Hydro-static

Recovery

Length (ft)	Description	Volume (bbl)
124.00	2%O 98%M	0.61
62.00	5%W 10%O 30%M 55%G	0.30
62.00	10%O 15%W 70%M 5%G	0.30
0.00	Strong GIP	0.00
0.00	Weak GIP	0.00

* Recovery from multiple tests

Gas Rates

Choke (inches)	Pressure (psig)	Gas Rate (Mcf/d)



**TRILOBITE
TESTING, INC.**

DRILL STEM TEST REPORT

TOOL DIAGRAM

Palomino Petroleum Inc

8-17s-26w Ness,KS

4924 SE 8457
New ton KS 67114

Tornado #1

Job Ticket: 50008

DST#: 3

ATTN: Ryan Seib

Test Start: 2012.08.27 @ 20:07:36

Tool Information

Drill Pipe:	Length: 3862.00 ft	Diameter: 3.80 inches	Volume: 54.17 bbl	Tool Weight:	2500.00 lb
Heavy Wt. Pipe:	Length: 0.00 ft	Diameter: 0.00 inches	Volume: 0.00 bbl	Weight set on Packer:	20000.00 lb
Drill Collar:	Length: 309.00 ft	Diameter: 2.25 inches	Volume: 1.52 bbl	Weight to Pull Loose:	74000.00 lb
			<u>Total Volume: 55.69 bbl</u>	Tool Chased	0.00 ft
Drill Pipe Above KB:	18.00 ft			String Weight: Initial	65000.00 lb
Depth to Top Packer:	4180.00 ft			Final	66000.00 lb
Depth to Bottom Packer:	ft				
Interval between Packers:	75.00 ft				
Tool Length:	102.00 ft				
Number of Packers:	2	Diameter:	6.75 inches		
Tool Comments:					

Tool Description

Tool Description	Length (ft)	Serial No.	Position	Depth (ft)	Accum. Lengths
Change Over Sub	1.00			4154.00	
Shut In Tool	5.00			4159.00	
Hydraulic tool	5.00			4164.00	
Jars	5.00			4169.00	
Safety Joint	2.00			4171.00	
Packer	5.00			4176.00	27.00 Bottom Of Top Packer
Packer	4.00			4180.00	
Stubb	1.00			4181.00	
Perforations	6.00			4187.00	
Recorder	0.00	8677	Inside	4187.00	
Recorder	0.00	8522	Outside	4187.00	
Change Over Sub	1.00			4188.00	
Drill Pipe	63.00			4251.00	
Change Over Sub	1.00			4252.00	
Bullnose	3.00			4255.00	75.00 Bottom Packers & Anchor

Total Tool Length: 102.00



**TRILOBITE
TESTING, INC.**

DRILL STEM TEST REPORT

FLUID SUMMARY

Palomino Petroleum Inc

8-17s-26w Ness,KS

4924 SE 8457
New ton KS 67114

Tornado #1

Job Ticket: 50008

DST#: 3

ATTN: Ryan Seib

Test Start: 2012.08.27 @ 20:07:36

Mud and Cushion Information

Mud Type: Gel Chem
Mud Weight: 9.00 lb/gal
Viscosity: 55.00 sec/qt
Water Loss: 8.78 in³
Resistivity: ohm.m
Salinity: 4400.00 ppm
Filter Cake: 1.00 inches

Cushion Type:
Cushion Length: ft
Cushion Volume: bbl
Gas Cushion Type:
Gas Cushion Pressure: psig

Oil API: deg API
Water Salinity: ppm

Recovery Information

Recovery Table

Length ft	Description	Volume bbl
124.00	2%O 98%M	0.610
62.00	5%W 10%O 30%M 55%G	0.305
62.00	10%O 15%W 70%M 5%G	0.305
0.00	Strong GIP	0.000
0.00	Weak GIP	0.000

Total Length: 248.00 ft Total Volume: 1.220 bbl

Num Fluid Samples: 0

Num Gas Bombs: 0

Serial #:

Laboratory Name:

Laboratory Location:

Recovery Comments:

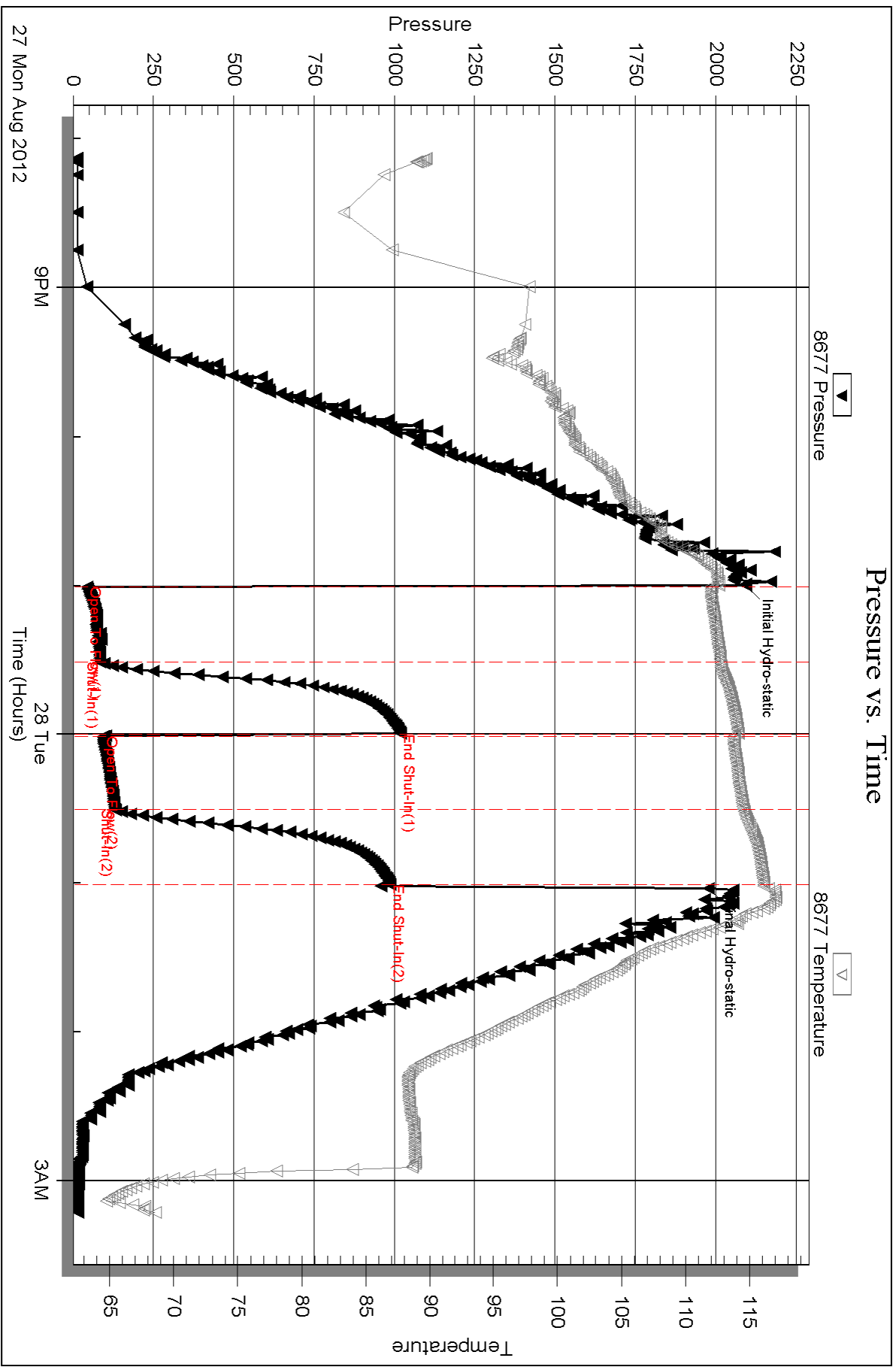
Serial #: 8677

Inside

Palomino Petroleum Inc

Tornado #1

DST Test Number: 3

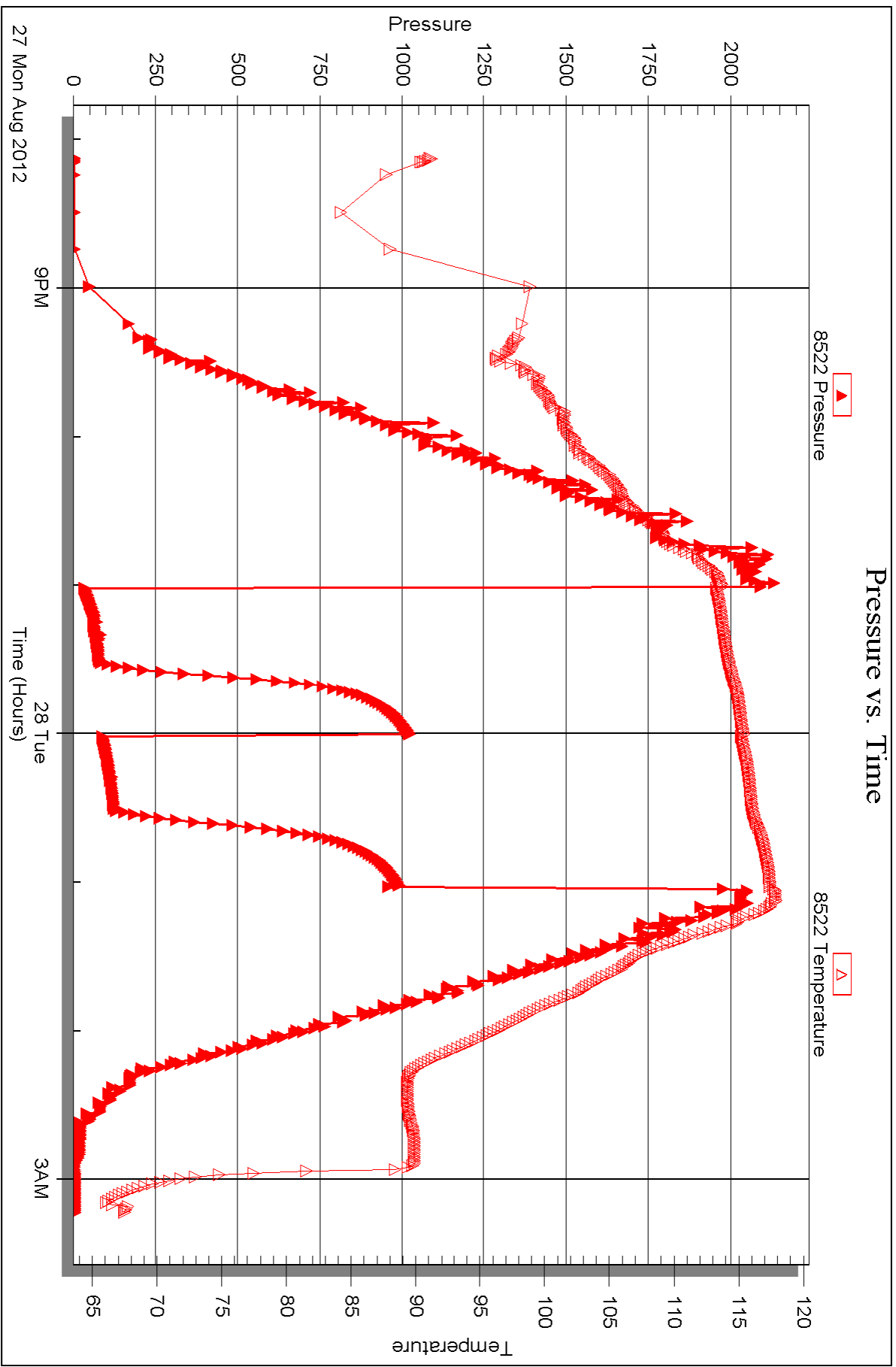


Serial #: 8522

Outside Palomino Petroleum Inc

Tornado #1

DST Test Number: 3





DRILL STEM TEST REPORT

Prepared For: **Palomino Petroleum Inc**

4924 SE 8457
Newton KS 67114

ATTN: Ryan Seib

Tornado #1

8-17s-26w Ness,KS

Start Date: 2012.08.28 @ 19:20:00

End Date: 2012.08.29 @ 02:17:15

Job Ticket #: 48437 DST #: 4

Trilobite Testing, Inc

PO Box 362 Hays, KS 67601

ph: 785-625-4778 fax: 785-625-5620

Printed: 2012.09.10 @ 16:30:22



**TRILOBITE
TESTING, INC.**

DRILL STEM TEST REPORT

Palomino Petroleum Inc

8-17s-26w Ness, KS

4924 SE 8457
New ton KS 67114

Tornado #1

Job Ticket: 48437

DST#: 4

ATTN: Ryan Seib

Test Start: 2012.08.28 @ 19:20:00

GENERAL INFORMATION:

Formation: **Marmaton**

Deviated: No Whipstock: ft (KB)

Time Tool Opened: 22:09:15

Time Test Ended: 02:17:15

Test Type: Conventional Bottom Hole (Reset)

Tester: Bradley Walter

Unit No: 53

Interval: 4241.00 ft (KB) To 4380.00 ft (KB) (TVD)

Reference Elevations: 2629.00 ft (KB)

Total Depth: 4380.00 ft (KB) (TVD)

2620.00 ft (CF)

Hole Diameter: 7.88 inches Hole Condition: Good

KB to GR/CF: 9.00 ft

Serial #: 8522 Outside

Press @ Run Depth: 32.77 psig @ 4242.00 ft (KB)

Capacity: 8000.00 psig

Start Date: 2012.08.28

End Date:

2012.08.29

Last Calib.:

2012.08.29

Start Time: 19:20:05

End Time:

02:17:14

Time On Btm:

2012.08.28 @ 22:09:00

Time Off Btm:

2012.08.29 @ 00:11:15

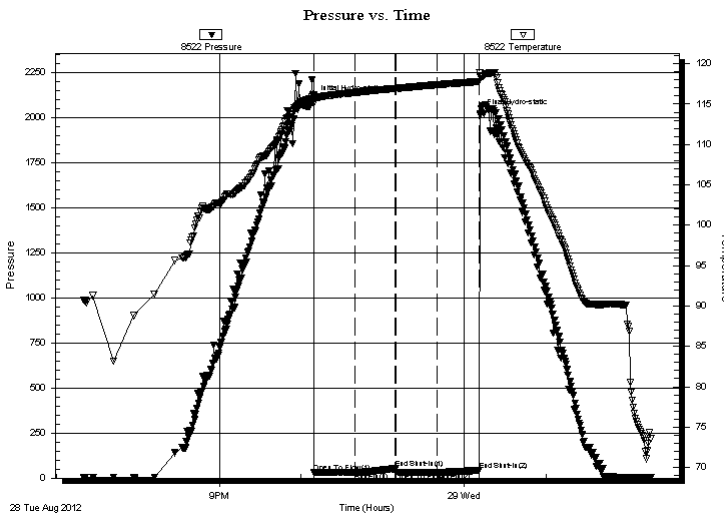
TEST COMMENT: IF: Surface blow, Died @ 19 min.

IS: No return.

FF: No blow.

FS: No return.

PRESSURE SUMMARY



Time (Min.)	Pressure (psig)	Temp (deg F)	Annotation
0	2101.00	116.11	Initial Hydro-static
1	30.67	115.03	Open To Flow (1)
31	32.07	116.45	Shut-In(1)
61	53.92	116.95	End Shut-In(1)
61	31.90	116.95	Open To Flow (2)
91	32.77	117.40	Shut-In(2)
122	42.87	117.81	End Shut-In(2)
123	2022.64	118.91	Final Hydro-static

Recovery

Length (ft)	Description	Volume (bbl)
10.00	mud 100m (oil spots in tool)	0.05

Gas Rates

Choke (inches)	Pressure (psig)	Gas Rate (Mcf/d)

* Recovery from multiple tests



**TRILOBITE
TESTING, INC.**

DRILL STEM TEST REPORT

TOOL DIAGRAM

Palomino Petroleum Inc

8-17s-26w Ness,KS

4924 SE 8457
New ton KS 67114

Tornado #1

Job Ticket: 48437

DST#: 4

ATTN: Ryan Seib

Test Start: 2012.08.28 @ 19:20:00

Tool Information

Drill Pipe:	Length: 3925.00 ft	Diameter: 3.80 inches	Volume: 55.06 bbl	Tool Weight: 2500.00 lb
Heavy Wt. Pipe:	Length: 0.00 ft	Diameter: 0.00 inches	Volume: 0.00 bbl	Weight set on Packer: 25000.00 lb
Drill Collar:	Length: 309.00 ft	Diameter: 2.25 inches	Volume: 1.52 bbl	Weight to Pull Loose: 80000.00 lb
			<u>Total Volume: 56.58 bbl</u>	Tool Chased 0.00 ft
Drill Pipe Above KB:	20.00 ft			String Weight: Initial 67000.00 lb
Depth to Top Packer:	4241.00 ft			Final 67000.00 lb
Depth to Bottom Packer:	ft			
Interval between Packers:	139.00 ft			
Tool Length:	166.00 ft			
Number of Packers:	2	Diameter: 6.75 inches		

Tool Comments:

Tool Description

Tool Description	Length (ft)	Serial No.	Position	Depth (ft)	Accum. Lengths
Change Over Sub	1.00			4215.00	
Shut In Tool	5.00			4220.00	
Hydraulic tool	5.00			4225.00	
Jars	5.00			4230.00	
Safety Joint	2.00			4232.00	
Packer	5.00			4237.00	27.00 Bottom Of Top Packer
Packer	4.00			4241.00	
Stubb	1.00			4242.00	
Recorder	0.00	8677	Inside	4242.00	
Recorder	0.00	8522	Outside	4242.00	
Perforations	7.00			4249.00	
Change Over Sub	1.00			4250.00	
Drill Pipe	126.00			4376.00	
Change Over Sub	1.00			4377.00	
Bullnose	3.00			4380.00	139.00 Bottom Packers & Anchor

Total Tool Length: 166.00



**TRILOBITE
TESTING, INC.**

DRILL STEM TEST REPORT

FLUID SUMMARY

Palomino Petroleum Inc

8-17s-26w Ness,KS

4924 SE 8457
New ton KS 67114

Tornado #1

Job Ticket: 48437

DST#: 4

ATTN: Ryan Seib

Test Start: 2012.08.28 @ 19:20:00

Mud and Cushion Information

Mud Type: Gel Chem

Cushion Type:

Oil API:

0 deg API

Mud Weight: 9.00 lb/gal

Cushion Length:

ft

Water Salinity:

0 ppm

Viscosity: 53.00 sec/qt

Cushion Volume:

bbbl

Water Loss: 8.39 in³

Gas Cushion Type:

Resistivity: ohm.m

Gas Cushion Pressure:

psig

Salinity: 3800.00 ppm

Filter Cake: 1.00 inches

Recovery Information

Recovery Table

Length ft	Description	Volume bbl
10.00	mud 100m (oil spots in tool)	0.049

Total Length: 10.00 ft Total Volume: 0.049 bbl

Num Fluid Samples: 0

Num Gas Bombs: 0

Serial #:

Laboratory Name:

Laboratory Location:

Recovery Comments:

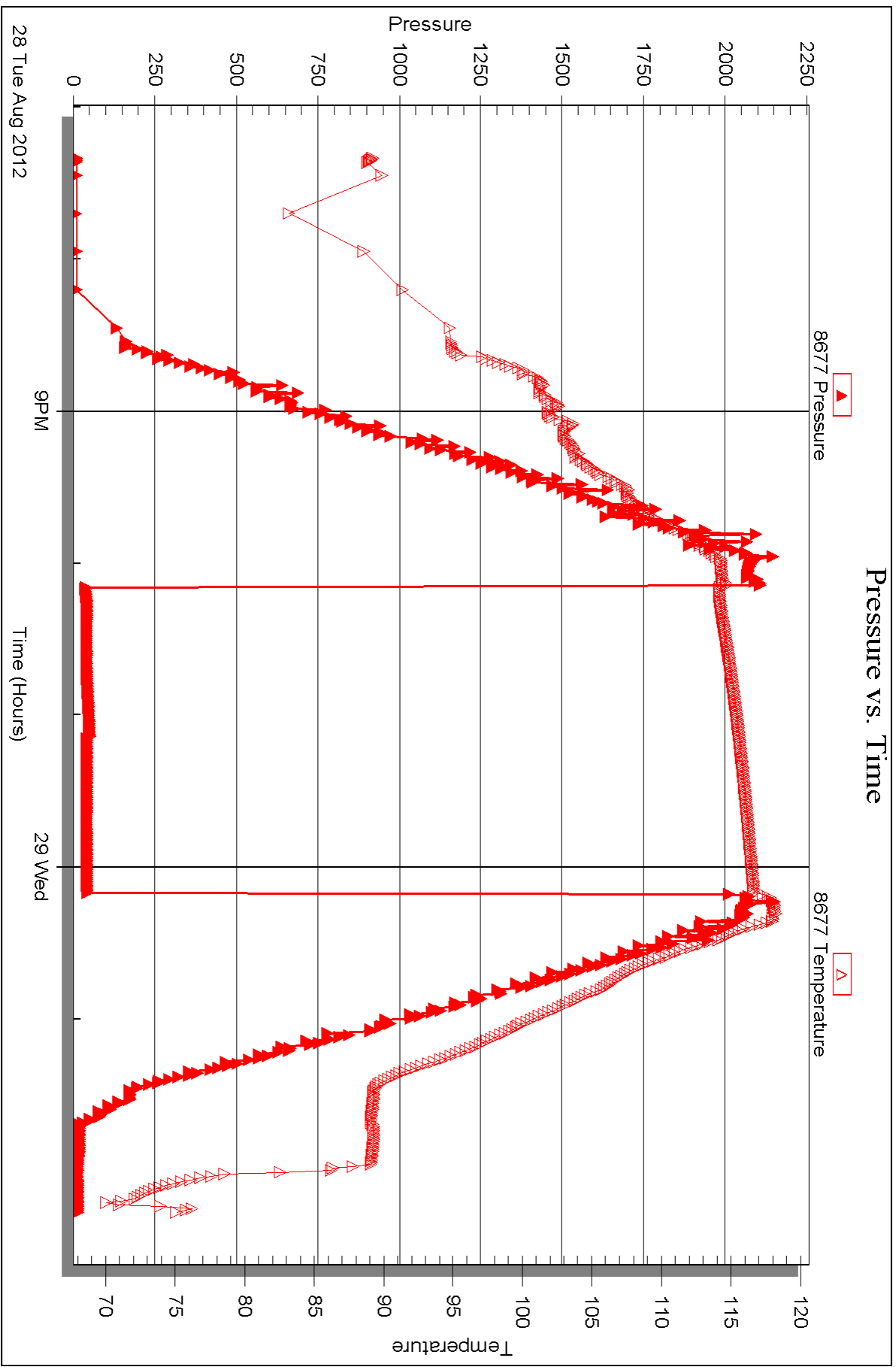
Serial #: 8677

Inside

Palomino Petroleum Inc

Tornado #1

DST Test Number: 4



Triobite Testing, Inc

Ref. No: 48437

Printed: 2012.09.10 @ 16:30:27



TRILOBITE TESTING INC.

1515 Commerce Parkway • Hays, Kansas 67601

Test Ticket

NO. 50006

Well Name & No. Tornado #1 Test No. 1 Date 8-25-12
 Company Palomino Petroleum Elevation 2629 KB 2620 GL
 Address 4924 SE 8457 Newton KS 67114
 Co. Rep / Geo. Ryan Seib Rig H2 Rig #3
 Location: Sec. 8 Twp. 17S Rge. 26W Co. Ness State KS

Interval Tested 3892-3962 Zone Tested Toronto
 Anchor Length 70 Drill Pipe Run 3582 Mud Wt. 8.9
 Top Packer Depth 3888 Drill Collars Run 309 Vis 49
 Bottom Packer Depth 3892 Wt. Pipe Run 0 WL 8.8
 Total Depth 3962 Chlorides 3100 ppm System LCM TR
 Blow Description IF-Fair Blow Built to 5in (Had 15' offill Chase it to bottom Had to pick up to make up Another joint of pipe)
ISI-Dead No Return
FF-Weak Surface Blow Built to 2in
FSL-Dead No Return

Rec	Feet of	%gas	%oil	%water	%mud
<u>247</u>	<u>Feet of MCW</u>			<u>70%</u>	<u>30%</u>
<u>62</u>	<u>Feet of Mud</u>				<u>100%</u>

Rec Total 309 BHT 116 Gravity - API RW - @ - °F Chlorides - ppm

(A) Initial Hydrostatic <u>1898</u>	<input checked="" type="checkbox"/> Test <u>1150</u>	T-On Location <u>23:20</u>
(B) First Initial Flow <u>100</u>	<input checked="" type="checkbox"/> Jars <u>250</u>	T-Started <u>0:21</u>
(C) First Final Flow <u>140</u>	<input checked="" type="checkbox"/> Safety Joint <u>75</u>	T-Open <u>3:35</u>
(D) Initial Shut-In <u>170 1170</u>	<input checked="" type="checkbox"/> Circ Sub <u>N/C</u>	T-Pulled <u>5:35</u>
(E) Second Initial Flow <u>159</u>	<input type="checkbox"/> Hourly Standby	T-Out <u>7:47</u>
(F) Second Final Flow <u>179</u>	<input checked="" type="checkbox"/> Mileage <u>100 R/T</u> ¹⁵⁵	Comments
(G) Final Shut-In <u>1156</u>	<input type="checkbox"/> Sampler	
(H) Final Hydrostatic <u>1827</u>	<input type="checkbox"/> Straddle	<input type="checkbox"/> Ruined Shale Packer
Initial Open <u>30</u>	<input type="checkbox"/> Shale Packer	<input type="checkbox"/> Ruined Packer
Initial Shut-In <u>30</u>	<input type="checkbox"/> Extra Packer	<input type="checkbox"/> Extra Copies
Final Flow <u>30</u>	<input type="checkbox"/> Extra Recorder	Sub Total <u>0</u>
Final Shut-In <u>30</u>	<input type="checkbox"/> Day Standby	Total <u>1630</u>
	<input type="checkbox"/> Accessibility	MP/DST Disc't
	Sub Total <u>1630</u>	

Approved By _____ Our Representative [Signature]
 Trilobite Testing Inc. shall not be liable for damaged of any kind of the property or personnel of the one for whom a test is made, or for any loss suffered or sustained, directly or indirectly, through the use of its equipment, or its statements or opinion concerning the results of any test, tools lost or damaged in the hole shall be paid for at cost by the party for whom the test is made.



TRILOBITE TESTING INC.

1515 Commerce Parkway • Hays, Kansas 67601

Test Ticket

NO. 50007

Well Name & No. Tornado #1 Test No. 2 Date 8-27-12
 Company Palomino Petroleum Elevation 2629 KB 2620 GL
 Address 4924 SE 8457 Newton KS 67114
 Co. Rep / Geo. Ryan Seib Rig H2 Rig # 3
 Location: Sec. 8 Twp. 17S Rge. 26W Co. Ness State KS

Interval Tested 4091 - 4198 Zone Tested Lansing
 Anchor Length 107 Drill Pipe Run 3769 Mud Wt. 9.0
 Top Packer Depth 4087 Drill Collars Run 309 Vis 52
 Bottom Packer Depth 4091 Wt. Pipe Run 0 WL 8.8
 Total Depth 4198 Chlorides 5700 ppm System LCM 1#

Blow Description IF - Fair Surface Blow Built to 4 3/4 in.
ISI - Dead No Blow Back
FF - Fair Surface Blow Built to Tin.
FSL - Weak Surface Blow Died Out In 18 mins

Rec	Feet of	%gas	%oil	%water	%mud
124	Mud with Oil Spots			100	
62	ISO CM		5	75	
62	GOLM	20	10	70	
372	Weak GIP	100			
62	Strong GIP	100			

Rec Total 248 BHT 114 Gravity - API RW - @ - °F Chlorides - ppm

(A) Initial Hydrostatic 2008 Test 1250 T-On Location 2:55
 (B) First Initial Flow 74 Jars 250 T-Started 3:35
 (C) First Final Flow 100 Safety Joint 75 T-Open 5:45
 (D) Initial Shut-In 900 Circ Sub N/C T-Pulled 7:45
 (E) Second Initial Flow 118 Hourly Standby T-Out 10:05
 (F) Second Final Flow 129 Mileage 100 R/T 155 Comments Chased 4ft to Bottom
 (G) Final Shut-In 891 Sampler
 (H) Final Hydrostatic Straddle Ruined Shale Packer
 Shale Packer Ruined Packer
 Extra Packer Extra Copies
 Extra Recorder Sub Total 0
 Day Standby Total 1730
 Accessibility MP/DST Disc't
 Sub Total 1730

Initial Open 30
 Initial Shut-In 30
 Final Flow 30
 Final Shut-In 30

Approved By _____ Our Representative [Signature]

TriLOBITE Testing Inc. shall not be liable for damaged of any kind of the property or personnel of the one for whom a test is made, or for any loss suffered or sustained, directly or indirectly, through the use of its equipment, or its statements or opinion concerning the results of any test, tools lost or damaged in the hole shall be paid for at cost by the party for whom the test is made.



TRILOBITE TESTING INC.

1515 Commerce Parkway • Hays, Kansas 67601

Test Ticket

NO. 50008

Well Name & No. Tornado #1 Test No. 3 Date 8-27-12
 Company Palomino Petroleum Elevation 2629 KB 2620 GL
 Address 4924 SE 8457 Newton KS 67114
 Co. Rep / Geo. Ryan Seib Rig H2 Rig #3
 Location: Sec. 8 Twp. 17s Rge. 26w Co. Ness State KS

Interval Tested 4180 - 4255 Zone Tested Lansing
 Anchor Length 75 Drill Pipe Run 3862 Mud Wt. 9.2
 Top Packer Depth 4174 Drill Collars Run 309 Vis 55
 Bottom Packer Depth 4180 Wt. Pipe Run 0 WL 8.8
 Total Depth 4255 Chlorides 4400 ppm System LCM 1

Blow Description IF - Weak Surface Blow Built to 4 in.
ISI - Dead No Return
FF - B.O.B. IN 29 mins
FSL - Dead No Return

Rec	Feet of	%gas	%oil	%water	%mud
124	VSOCM		2	8	88
62	GWCOM	55	10	5	30
62	GWCOM	5	10	15	70
124	Weak GIP	100			
248	Strong GIP	100			
Rec Total	248	BHT	116	Gravity	-

(A) Initial Hydrostatic 2094 Test 1250 T-On Location 19:30
 (B) First Initial Flow 44 Jars 250 T-Started 20:07
 (C) First Final Flow 84 Safety Joint 75 T-Open 23:00
 (D) Initial Shut-In 1019 Circ Sub N/C T-Pulled 1:00
 (E) Second Initial Flow 94 Hourly Standby T-Out 3:12
 (F) Second Final Flow 129 Mileage 100 R/T 155 Comments _____
 (G) Final Shut-In 986 Sampler _____
 (H) Final Hydrostatic 1977 Straddle Ruined Shale Packer _____
 Shale Packer Ruined Packer _____
 Extra Packer Extra Copies _____

Initial Open 30
 Initial Shut-In 30
 Final Flow 30
 Final Shut-In 30
 Sub Total 1730
 Total 1730
 MP/DST Disc't _____

Approved By _____ Our Representative [Signature]
 Trilobite Testing Inc. shall not be liable for damaged of any kind of the property or personnel of the one for whom a test is made, or for any loss suffered or sustained, directly or indirectly, through the use of its equipment, or its statements or opinion concerning the results of any test, tools lost or damaged in the hole shall be paid for at cost by the party for whom the test is made.



TRILOBITE TESTING INC.

P.O. Box 1733 • Hays, Kansas 67601

Test Ticket

NO. 48437

Well Name & No. Tornado #1 Test No. 4 Date 8-28-12
 Company Palomino Petroleum Elevation 2629 KB 2620 GL
 Address 4924 SE 8457 Newton, Ks 67114
 Co. Rep / Geo. Ryan Seib Rig H2-#3
 Location: Sec. 8 Twp. 17S Rge. 26W Co. Miss State Ks

Interval Tested 4241-4380 Zone Tested Permian
 Anchor Length 139' Drill Pipe Run 3925 Mud Wt. 9.3
 Top Packer Depth 4236 Drill Collars Run 309 Vis 53
 Bottom Packer Depth 4241 Wt. Pipe Run 0 WL 8.4
 Total Depth 4380 Chlorides 3800 ppm System LCM 1#

Blow Description IF: Surface blow, died @ 19 min.
ISI: No return
FF: No blow
FSI: No return

Rec	Feet of	%gas	%oil	%water	%mud
<u>10</u>	<u>MUD</u>				<u>100</u>
	<u>(OIL SPOTS IN TOOL)</u>				

Rec Total 10 BHT 118 Gravity — API RW — @ — °F Chlorides — ppm

(A) Initial Hydrostatic <u>2101</u>	<input checked="" type="checkbox"/> Test 1250	T-On Location <u>1800</u>
(B) First Initial Flow <u>31</u>	<input checked="" type="checkbox"/> Jars 250	T-Started <u>1920</u>
(C) First Final Flow <u>32</u>	<input checked="" type="checkbox"/> Safety Joint 75	T-Open <u>2209</u>
(D) Initial Shut-In <u>54</u>	<input checked="" type="checkbox"/> Circ Sub <u>N/c</u>	T-Pulled <u>0009 8/29</u>
(E) Second Initial Flow <u>32</u>	<input type="checkbox"/> Hourly Standby	T-Out <u>0216</u>
(F) Second Final Flow <u>33</u>	<input checked="" type="checkbox"/> Mileage <u>100 RT</u> 155	Comments _____
(G) Final Shut-In <u>43</u>	<input type="checkbox"/> Sampler	<input type="checkbox"/> Ruined Shale Packer
(H) Final Hydrostatic <u>2023</u>	<input type="checkbox"/> Straddle	<input type="checkbox"/> Ruined Packer
Initial Open <u>30</u>	<input type="checkbox"/> Shale Packer	<input type="checkbox"/> Extra Copies
Initial Shut-In <u>30</u>	<input type="checkbox"/> Extra Packer	Sub Total <u>0</u>
Final Flow <u>30</u>	<input type="checkbox"/> Extra Recorder	Total <u>1730</u>
Final Shut-In <u>30</u>	<input type="checkbox"/> Day Standby	MP/DST Disc't _____
	<input type="checkbox"/> Accessibility	
	Sub Total <u>1730</u>	

Approved By _____ Our Representative [Signature]

Trilobite Testing Inc. shall not be liable for damaged of any kind of the property or personnel of the one for whom a test is made, or for any loss suffered or sustained, directly or indirectly, through the use of its equipment, or its statements or opinion concerning the results of any test, tools lost or damaged in the hole shall be paid for at cost by the party for whom the test is made.



CONSOLIDATED
Oil Well Services, LLC

REMIT TO
Consolidated Oil Well Services, LLC
Dept. 970
P.O. Box 4346
Houston, TX 77210-4346

RECEIVED

AUG 24 2012

MAIN OFFICE
P.O. Box 884
Chanute, KS 66720
620/431-9210 • 1-800/467-8676
Fax 620/431-0012

INVOICE

Invoice # 252271

Invoice Date: 08/22/2012 Terms: 10/10/30,n/30

Page 1

PALOMINO PETROLEUM, INC.
4924 SE 84TH STREET
NEWTON KS 67114-8827
() -

TORNADO #1
37107
8-17-26
08-21-2012
KS

Part Number	Description	Qty	Unit Price	Total
1104S	CLASS "A" CEMENT (SALE)	165.00	17.6500	2912.25
1102	CALCIUM CHLORIDE (50#)	465.00	.8900	413.85
1118B	PREMIUM GEL / BENTONITE	310.00	.2500	77.50

Sublet Performed	Description	Total
9996-130	CEMENT MATERIAL DISCOUNT	-340.36
9995-130	CEMENT EQUIPMENT DISCOUNT	-164.50

Description	Hours	Unit Price	Total
460 MIN. BULK DELIVERY	1.00	410.00	410.00
463 CEMENT PUMP (SURFACE)	1.00	1085.00	1085.00
463 EQUIPMENT MILEAGE (ONE WAY)	30.00	5.00	150.00

Amount Due 5263.02 if paid after 09/21/2012

Parts:	3403.60	Freight:	.00	Tax:	192.98	AR	4736.72
Labor:	.00	Misc:	.00	Total:	4736.72		
Sublt:	-504.86	Supplies:	.00	Change:	.00		

Signed _____

Date _____

BARTLESVILLE, OK
918/338-0808

EL DORADO, KS
316/322-7022

EUREKA, KS
620/583-7664

PONCA CITY, OK
580/762-2303

OAKLEY, KS
785/672-2227

OTTAWA, KS
785/242-4044

THAYER, KS
620/839-5269

GILLETTE, WY
307/686-4914



RECEIVED
SEP 10 2012

INVOICE

PO Box 93999
Southlake, TX 76092

Invoice Number: 132582
Invoice Date: Aug 30, 2012
Page: 1

Voice: (817) 546-7282
Fax: (817) 246-3361



Bill To:
Palomino Petroleum, Inc. 4924 SE 84th St. Newton, KS 67114-8827

Customer ID	Well Name/# or Customer P.O.	Payment Terms	
Palo	Tornado #1	Net 30 Days	
Job Location	Camp Location	Service Date	Due Date
KS1-03	Great Bend	Aug 30, 2012	9/29/12

Quantity	Item	Description	Unit Price	Amount
162.00	MAT	Class A Common	16.25	2,632.50
108.00	MAT	Pozmix	8.50	918.00
9.00	MAT	Gel	21.25	191.25
68.00	MAT	Flo Seal	2.70	183.60
289.53	SER	Cubic Feet	2.10	608.01
362.71	SER	Ton Mileage	2.35	852.34
1.00	SER	Plug to Abandon	1,250.00	1,250.00
30.00	SER	Pump Truck Mileage	7.00	210.00
30.00	SER	Light Vehicle Mileage	4.00	120.00
1.00	CEMENTER	Charles Elkins		
1.00	EQUIP OPER	Kevin Eddy		
1.00	OPER ASSIST	Alan Genereux		

Cement for plugging 8/30

ALL PRICES ARE NET, PAYABLE
30 DAYS FOLLOWING DATE OF
INVOICE. 1 1/2% CHARGED
THEREAFTER. IF ACCOUNT IS
CURRENT, TAKE DISCOUNT OF

\$ 1741.42

ONLY IF PAID ON OR BEFORE
Sep 24, 2012

Subtotal	6,965.70
Sales Tax	438.84
Total Invoice Amount	7,404.54
Payment/Credit Applied	
TOTAL	7,404.54

7,404.54 - 1,741.42 = 5,663.12

ALLIED OIL & GAS SERVICES, LLC 059006

Federal Tax I.D.# 20-5975804

REMIT TO P.O. BOX 93999
SOUTHLAKE, TEXAS 76092

SERVICE POINT:
Grest Bend

DATE <u>8/30/12</u>	SEC <u>8</u>	TWP <u>17S</u>	RANGE <u>26W</u>	CALLED OUT	ON LOCATION <u>9:00 AM</u>	JOB START <u>9:45 AM</u>	JOB FINISH <u>12:30 PM</u>
LEASE <u>Tornado</u>	WELL# <u>1</u>	LOCATION <u>on BRd 3 miles West into location</u>			COUNTY <u>WESS</u>	STATE <u>KS</u>	
OLD OR <u>NEW</u> (Circle one)						<u>1.03</u> <u>6.3</u> <u>all</u>	

CONTRACTOR WZ
TYPE OF JOB PTA
HOLE SIZE 2 7/8 T.D. 4642
CASING SIZE 8 7/8 24" DEPTH 215
TUBING SIZE 4 1/2 16.6" DEPTH 2060
DRILL PIPE DEPTH
TOOL DEPTH
PRES. MAX MINIMUM
MEAS. LINE SHOE JOINT
CEMENT LEFT IN CSG.
PERFS.
DISPLACEMENT WBH + FW
EQUIPMENT
PUMP TRUCK CEMENTER Charles Eddins 1
366 HELPER Kevin Eddy 2
BULK TRUCK
DRIVER Alan Goncreux 3
BULK TRUCK
DRIVER

OWNER Palomino Petroleum
CEMENT
AMOUNT ORDERED 270 sk 60140/14% Gel + 1/4" Flo-seal
COMMON 162 @ 16.25 2,632.50
POZMIX 108 @ 8.50 918.00
GEL 9 @ 21.25 191.25
CHLORIDE @
ASC @
1/4" Seal 68 @ 2.70 183.60
HANDLING 289.53 x @ 2.10 608.91
MILEAGE 12.09 x 30 x 2.35 852.37
TOTAL 5,385.70

REMARKS:
Plug 1 @ 2060 ft: 4.5FW, 12.5cmt, 1.5FW, 24.5 WBH
Plug 2 @ 1230 ft: 4.5FW, 20cmt, 1.5FW, 10.5 WBH
Plug 3 @ 100 ft: 70FW, 12.5cmt, 4FW
Plug 4 @ 240 ft: 10cmt, 1FW
Plug 5 @ 60 ft: 5cmt, 1FW
Fill Ret Hole with 7.5 bbls Cmt

CHARGE TO: Palomino Petroleum
STREET _____
CITY _____ STATE _____ ZIP _____

SERVICE
DEPTH OF JOB 2060
PUMP TRUCK CHARGE 1250.00
EXTRA FOOTAGE @
MILEAGE Hum 30 @ 7.00 210.00
MANIFOLD @
hum 30 @ 4.00 120.00
TOTAL 1580.00

To: Allied Oil & Gas Services, LLC.
You are hereby requested to rent cementing equipment and furnish cementer and helper(s) to assist owner or contractor to do work as is listed. The above work was done to satisfaction and supervision of owner agent or contractor. I have read and understand the "GENERAL TERMS AND CONDITIONS" listed on the reverse side.

PRINTED NAME Gary Axtell
SIGNATURE Gary Axtell

PLUG & FLOAT EQUIPMENT
@
@
@
@
@
TOTAL _____
SALES TAX (If Any) 438.83
TOTAL CHARGES 6,965.70
DISCOUNT 25% 1,741.42 IF PAID IN 30 DAYS
5,224.28