



## TEMPORARY ABANDONMENT WELL APPLICATION

OPERATOR: License# \_\_\_\_\_  
 Name: \_\_\_\_\_  
 Address 1: \_\_\_\_\_  
 Address 2: \_\_\_\_\_  
 City: \_\_\_\_\_ State: \_\_\_\_\_ Zip: \_\_\_\_\_ + \_\_\_\_\_  
 Contact Person: \_\_\_\_\_  
 Phone: ( \_\_\_\_\_ ) \_\_\_\_\_  
 Contact Person Email: \_\_\_\_\_  
 Field Contact Person: \_\_\_\_\_  
 Field Contact Person Phone: ( \_\_\_\_\_ ) \_\_\_\_\_

API No. 15- \_\_\_\_\_  
 Spot Description: \_\_\_\_\_  
 \_\_\_\_\_ Sec. \_\_\_\_\_ Twp. \_\_\_\_\_ S. R. \_\_\_\_\_  E  W  
 \_\_\_\_\_ feet from  N /  S Line of Section  
 \_\_\_\_\_ feet from  E /  W Line of Section  
 GPS Location: Lat: \_\_\_\_\_, Long: \_\_\_\_\_  
(e.g. xx.xxxxx) (e.g. -xxx.xxxxx)  
 County: \_\_\_\_\_  
 Lease Name: \_\_\_\_\_ Well #: \_\_\_\_\_  
 Elevation: \_\_\_\_\_  GL  KB  
 Well Type: (check one)  Oil  Gas  OG  WSW  Other: \_\_\_\_\_  
 SWD Permit #: \_\_\_\_\_  ENHR Permit #: \_\_\_\_\_  
 Gas Storage Permit #: \_\_\_\_\_  
 Spud Date: \_\_\_\_\_ Date Shut-In: \_\_\_\_\_

	Conductor	Surface	Production	Intermediate	Liner	Tubing
Size						
Setting Depth						
Amount of Cement						
Top of Cement						
Bottom of Cement						

Casing Fluid Level: \_\_\_\_\_ How Determined? \_\_\_\_\_ Date: \_\_\_\_\_

Casing Squeeze(s): \_\_\_\_\_ to \_\_\_\_\_ w / \_\_\_\_\_ sacks of cement, \_\_\_\_\_ to \_\_\_\_\_ w / \_\_\_\_\_ sacks of cement. Date: \_\_\_\_\_  
(top) (bottom) (top) (bottom)

Do you have a valid Oil & Gas Lease?  Yes  No

Depth and Type:  Junk in Hole at \_\_\_\_\_  Tools in Hole at \_\_\_\_\_ Casing Leaks:  Yes  No Depth of casing leak(s): \_\_\_\_\_  
(depth) (depth)

Type Completion:  ALT. I  ALT. II Depth of:  DV Tool: \_\_\_\_\_ w / \_\_\_\_\_ sacks of cement  Port Collar: \_\_\_\_\_ w / \_\_\_\_\_ sack of cement  
(depth) (depth)

Packer Type: \_\_\_\_\_ Size: \_\_\_\_\_ Inch Set at: \_\_\_\_\_ Feet

Total Depth: \_\_\_\_\_ Plug Back Depth: \_\_\_\_\_ Plug Back Method: \_\_\_\_\_

**Geological Data:**

Formation Name	Formation Top	Formation Base	Completion Information
1. _____	At: _____	to _____ Feet	Perforation Interval _____ to _____ Feet or Open Hole Interval _____ to _____ Feet
2. _____	At: _____	to _____ Feet	Perforation Interval _____ to _____ Feet or Open Hole Interval _____ to _____ Feet

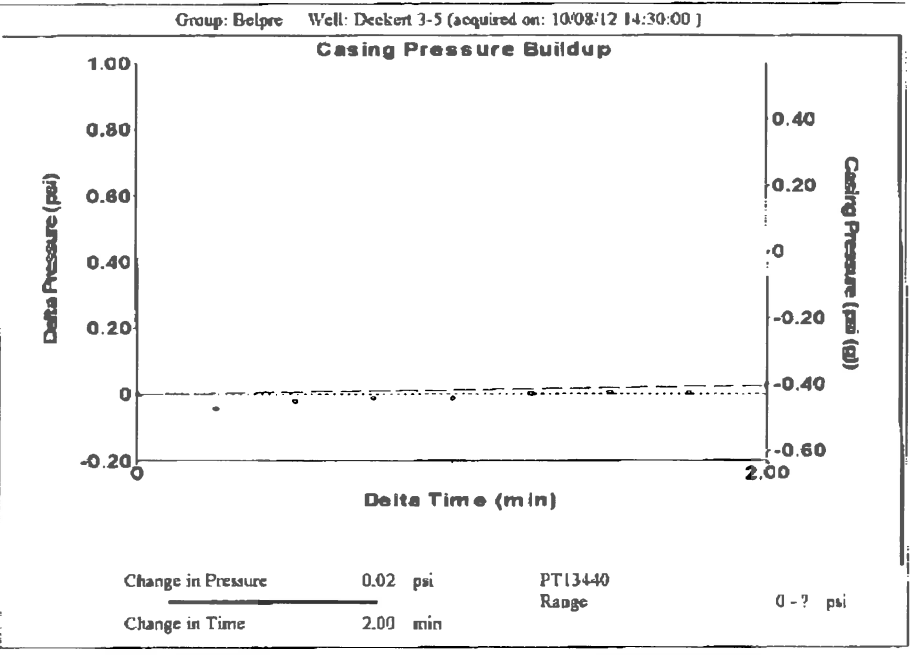
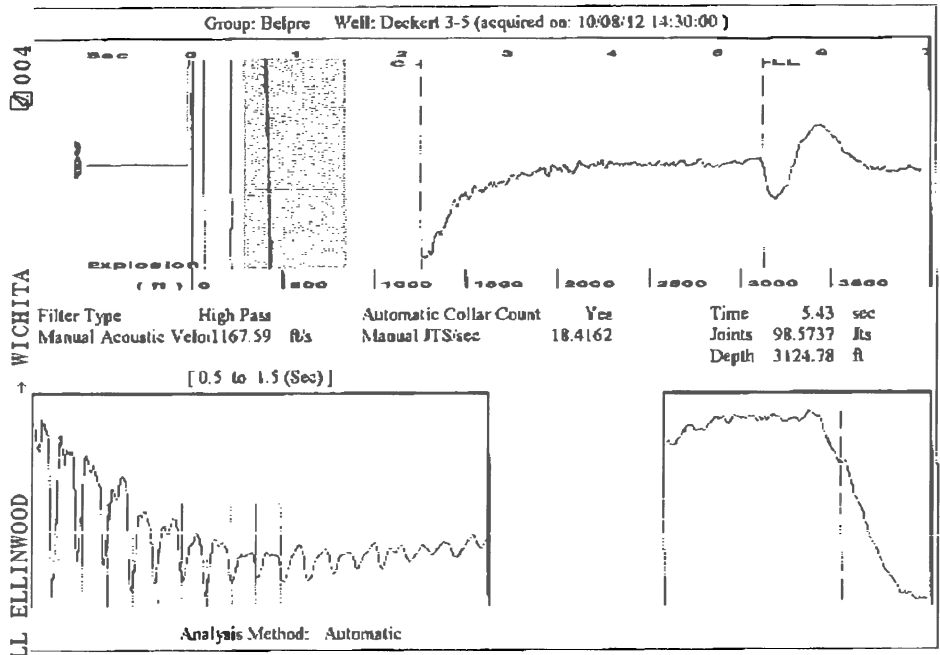
**Submitted Electronically**

<b>Do NOT Write in This Space - KCC USE ONLY</b>	Date Tested: _____	Results: _____	Date Plugged: _____	Date Repaired: _____	Date Put Back in Service: _____
	Review Completed by: _____ Comments: _____ TA Approved: Yes <input type="checkbox"/> Denied <input type="checkbox"/>				

**Mail to the Appropriate KCC Conservation Office:**

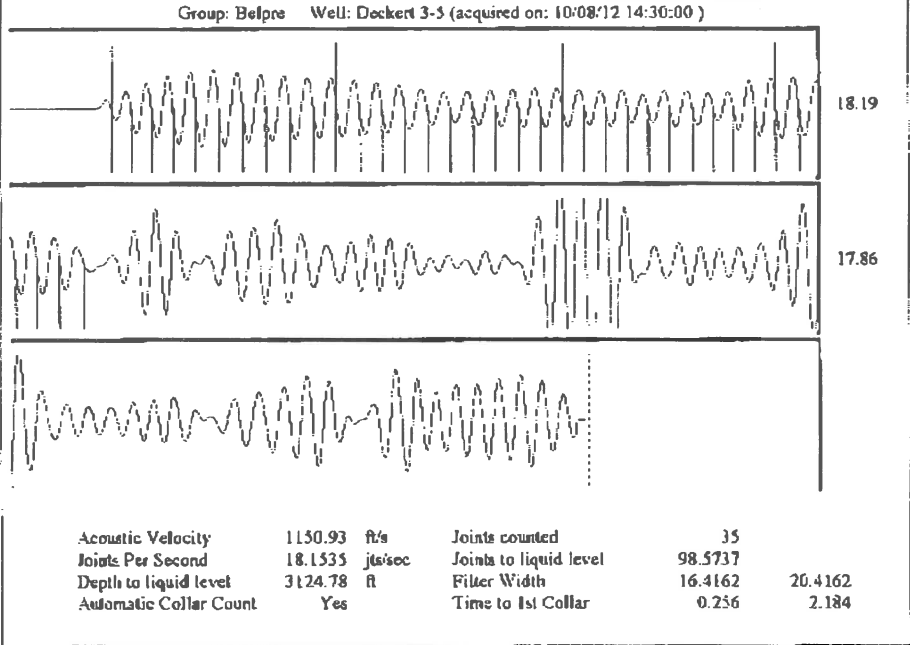
	KCC District Office #1 - 210 E. Frontview, Suite A, Dodge City, KS 67801	Phone 620.225.8888
	KCC District Office #2 - 3450 N. Rock Road, Building 600, Suite 601, Wichita, KS 67226	Phone 316.630.4000
	KCC District Office #3 - 1500 SW Seventh Steet, Chanute, KS 66720	Phone 620.432.2300
	KCC District Office #4 - 2301 E. 13th Street, Hays, KS 67601-2651	Phone 785.625.0550
	Underground Porosity Gas Storage (UPGS) 8200 E. 34th Street Circle N., Suite 1003, Wichita, KS 67226	Phone 316.734.4933

Received Fax : 10/09/2012 20:33 FAX 620 564 2062 Oct 10 2012 8:03AM Fax Station : FG Holl Co., LLC D 4



Group: Belpre Well: Deckert 3-5 (acquired on: 10/08/12 14:30:00)

Production Current	Potential	Casing Pressure	-0.4 psi (g)	Producing
Oil -.-	-.- BBL/D	Casing Pressure Buildup	0.0 psi	Annular Gas Flow
Water -.-	-.- BBL/D	2.00 min	0 Mscf/D	% Liquid
Gas -.-	-.- Macf/D	Gas/Liquid Interface Pressure	0.9 psi (g)	100 %
IPR Method	Vogel	Liquid Level Depth	3124.78 ft	
PBHP/SBHP	-.-	Pump Intake Depth	-.- ft	
Production Efficiency	0.0	Formation Depth	4384.00 ft	
Oil 40 deg.API		Formation Submergence		
Water 1.05 Sp.Gr.H2O		Total Gaseous Liquid Column HT (TVD)	1259 ft	
Gas 0.84 Sp.Gr.AIR		Equivalent Gas Free Liquid HT (TVD)	1259 ft	
Acoustic Velocity	1150.93 ft/s	Acoustic Test		
		Pump Intake	-.- psi (g)	
		Producing BHP	573.4 psi (g)	
		Static BHP	372.8 psi (g)	



Conservation Division  
District Office No. 1  
210 E. Frontview, Suite A  
Dodge City, KS 67801



Phone: 620-225-8888  
Fax: 620-225-8885  
<http://kcc.ks.gov/>

Mark Sievers, Chairman  
Thomas E. Wright, Commissioner  
Shari Feist Albrecht, Commissioner

Sam Brownback, Governor

October 12, 2012

Rebecca George  
F. G. Holl Company L.L.C.  
9431 E CENTRAL STE 100  
WICHITA, KS 67206-2563

Re: Temporary Abandonment  
API 15-047-21302-00-00  
DECKERT 3-5  
NE/4 Sec.05-24S-17W  
Edwards County, Kansas

Dear Rebecca George:

Your temporary abandonment (TA) application for the well listed above has been approved. In accordance with K.A.R. 82-3-111 the TA status of this well will expire 10/12/2013.

- \* If you return this well to service or plug it, please notify the District Office.
- \* If you sell this well you are required to file a Transfer of Operator form, T-1.
- \* If the well will remain temporarily abandoned, you must submit a new TA application, CP-111, before 10/12/2013.

You may contact me at the number below if you have questions.

Very truly yours,

Steve Pfeifer

## Summary of Changes

Lease Name and Number: DECKERT 3-5

API/Permit #: 15-047-21302-00-00

Doc ID: 1097254

Correction Number: 1

Field Name	Previous Value	New Value
Approved Date	10/12/2012	10/16/2012
Elevation	2113	2120
Elevation Datum	GL	KB
Save Link	<a href="http://.../kcc/detail/operatorEditDetail.cfm?docID=1096873">../..kcc/detail/operatorEditDetail.cfm?docID=1096873</a>	<a href="http://.../kcc/detail/operatorEditDetail.cfm?docID=1097254">../..kcc/detail/operatorEditDetail.cfm?docID=1097254</a>
Tubing Setting Depth	0	4358
Tubing Size	0	2.3750

## Summary of Attachments

Lease Name and Number: DECKERT 3-5

API: 15-047-21302-00-00

Doc ID: 1097254

Correction Number: 1

Attachment Name

Temporary Abandonment Approved