



TEMPORARY ABANDONMENT WELL APPLICATION

OPERATOR: License# _____
 Name: _____
 Address 1: _____
 Address 2: _____
 City: _____ State: _____ Zip: _____ + _____
 Contact Person: _____
 Phone: (_____) _____
 Contact Person Email: _____
 Field Contact Person: _____
 Field Contact Person Phone: (_____) _____

API No. 15- _____
 Spot Description: _____
 _____ Sec. _____ Twp. _____ S. R. _____ E W
 _____ feet from N / S Line of Section
 _____ feet from E / W Line of Section
 GPS Location: Lat: _____, Long: _____
 County: _____ (e.g. xx.xxxxx) (e.g. -xxx.xxxxx)
 Lease Name: _____ Well #: _____
 Elevation: _____ GL KB
 Well Type: (check one) Oil Gas OG WSW Other: _____
 SWD Permit #: _____ ENHR Permit #: _____
 Gas Storage Permit #: _____
 Spud Date: _____ Date Shut-In: _____

| | Conductor | Surface | Production | Intermediate | Liner | Tubing |
|------------------|-----------|---------|------------|--------------|-------|--------|
| Size | | | | | | |
| Setting Depth | | | | | | |
| Amount of Cement | | | | | | |
| Top of Cement | | | | | | |
| Bottom of Cement | | | | | | |

Casing Fluid Level: _____ How Determined? _____ Date: _____
 Casing Squeeze(s): _____ to _____ w / _____ sacks of cement, _____ to _____ w / _____ sacks of cement. Date: _____
 (top) (bottom) (top) (bottom)
 Do you have a valid Oil & Gas Lease? Yes No
 Depth and Type: Junk in Hole at _____ (depth) Tools in Hole at _____ (depth) Casing Leaks: Yes No Depth of casing leak(s): _____
 Type Completion: ALT. I ALT. II Depth of: DV Tool: _____ w / _____ sacks of cement Port Collar: _____ w / _____ sack of cement
 (depth) (depth)
 Packer Type: _____ Size: _____ Inch Set at: _____ Feet
 Total Depth: _____ Plug Back Depth: _____ Plug Back Method: _____

Geological Data:

| Formation Name | Formation Top | Formation Base | Completion Information |
|----------------|---------------|----------------|--|
| 1. _____ | At: _____ | to _____ Feet | Perforation Interval _____ to _____ Feet or Open Hole Interval _____ to _____ Feet |
| 2. _____ | At: _____ | to _____ Feet | Perforation Interval _____ to _____ Feet or Open Hole Interval _____ to _____ Feet |

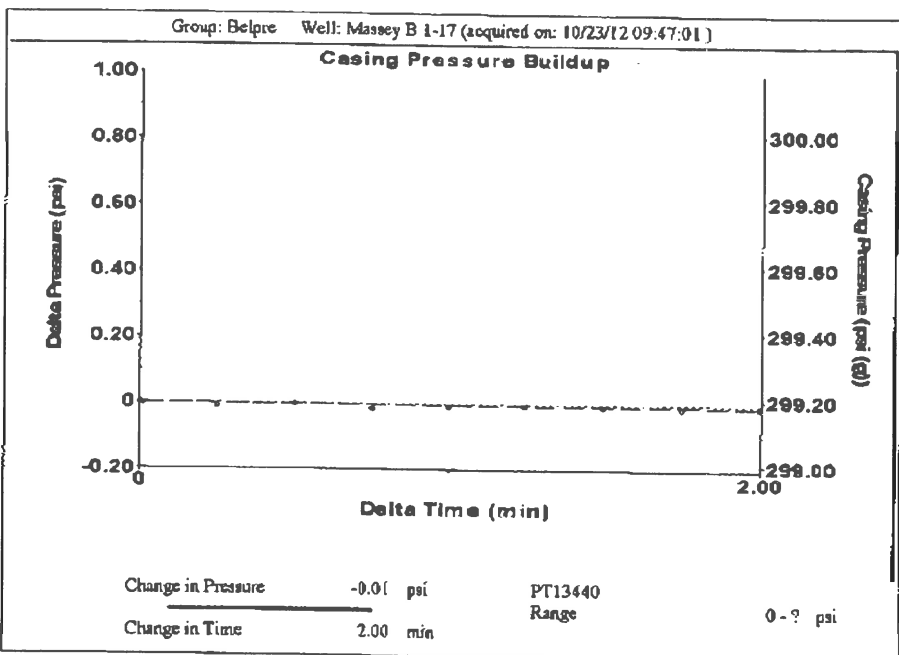
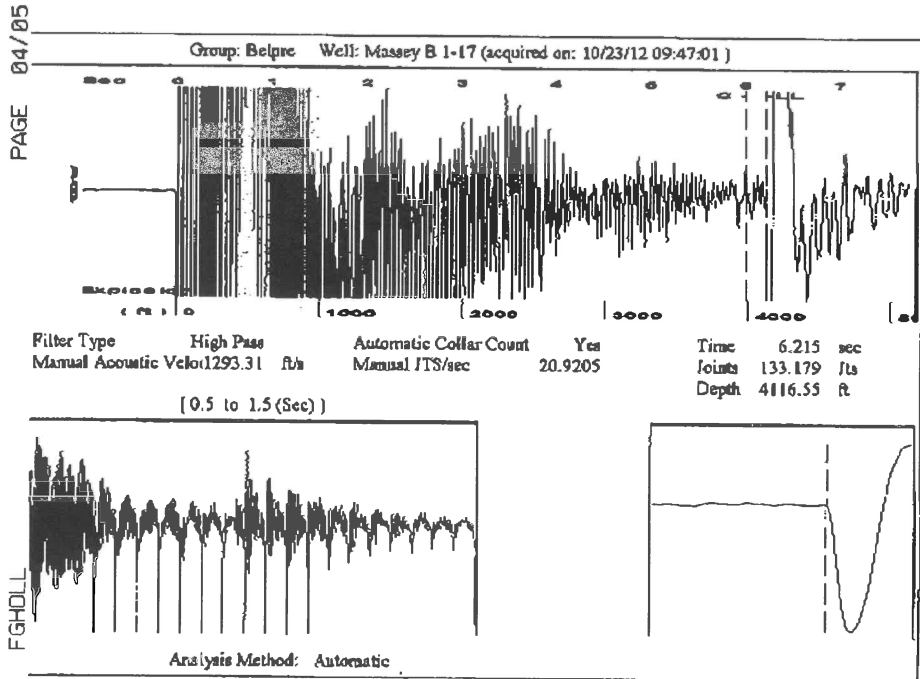
Submitted Electronically

| | | | | | |
|--|----------------------------|-----------------|---|----------------------|---------------------------------|
| Do NOT Write in This Space - KCC USE ONLY | Date Tested: _____ | Results: _____ | Date Plugged: _____ | Date Repaired: _____ | Date Put Back in Service: _____ |
| | Review Completed by: _____ | Comments: _____ | TA Approved: Yes <input type="checkbox"/> Denied <input type="checkbox"/> | | |

Mail to the Appropriate KCC Conservation Office:

| | | |
|--|--|--------------------|
| | KCC District Office #1 - 210 E. Frontview, Suite A, Dodge City, KS 67801 | Phone 620.225.8888 |
| | KCC District Office #2 - 3450 N. Rock Road, Building 600, Suite 601, Wichita, KS 67226 | Phone 316.630.4000 |
| | KCC District Office #3 - 1500 SW Seventh Steet, Chanute, KS 66720 | Phone 620.432.2300 |
| | KCC District Office #4 - 2301 E. 13th Street, Hays, KS 67601-2651 | Phone 785.625.0550 |
| | Underground Porosity Gas Storage (UPGS) 8200 E. 34th Street Circle N., Suite 1003, Wichita, KS 67226 | Phone 316.734.4933 |

Received Fax : 10/24/2012 6:37AM
 Fax Station : Fg Holl Co., LLC
 D 4
 PAGE 04/05
 FGHDLL
 5209953323
 10/24/2012 06:27



Group: Belpre Well: Massey B 1-17 (acquired on: 10/23/12 09:47:01)

| | | | | |
|--------------------------------------|------------------|-------------------------------|----------------------|------------------|
| Production | Potential | Casing Pressure | | Producing |
| Oil - * - | - * - BBL/D | 299.2 psi (g) | | Annular Gas Flow |
| Water - * - | - * - BBL/D | Casing Pressure Buildup | | 0 Mac/D |
| Gas - * - | - * - Mac/D | -0.007 psi | | % Liquid |
| | | 2.00 min | | 100 % |
| IPR Method | Vogel | Gas/Liquid Interface Pressure | | |
| PBHP/SBHP | - * - | 330.2 psi (g) | | |
| Production Efficiency | 0.0 | Liquid Level Depth | | |
| Oil 40 deg.API | | 4116.55 ft | | |
| Water 1.05 Sp.Gr.H2O | | Pump Intake Depth | | |
| Gas 0.66 Sp.Gr.AIR | | 4205.00 ft | | |
| Acoustic Velocity | 1324.71 ft/s | Formation Depth | | |
| | | 4268.00 ft | | |
| Formation Submergence | | | Pump Intake | |
| Total Gaseous Liquid Column HT (TVD) | | 88 ft | 359.3 psi (g) | |
| Equivalent Gas Free Liquid HT (TVD) | | 88 ft | Producing BHP | |
| | | | 388.0 psi (g) | |
| | | | Static BHP | |
| | | | - * - psi (g) | |
| Acoustic Test | | | | |

