



Confidentiality Requested:

Yes No

KANSAS CORPORATION COMMISSION 1097099
OIL & GAS CONSERVATION DIVISION

Form ACO-1

August 2013

Form must be Typed
Form must be Signed
All blanks must be Filled

WELL COMPLETION FORM
WELL HISTORY - DESCRIPTION OF WELL & LEASE

OPERATOR: License # _____

Name: _____

Address 1: _____

Address 2: _____

City: _____ State: _____ Zip: _____ + _____

Contact Person: _____

Phone: (_____) _____

CONTRACTOR: License # _____

Name: _____

Wellsite Geologist: _____

Purchaser: _____

Designate Type of Completion:

- New Well Re-Entry Workover
- Oil WSW SWD SIOW
- Gas D&A ENHR SIGW
- OG GSW Temp. Abd.
- CM (Coal Bed Methane)
- Cathodic Other (Core, Expl., etc.): _____

If Workover/Re-entry: Old Well Info as follows:

Operator: _____

Well Name: _____

Original Comp. Date: _____ Original Total Depth: _____

- Deepening Re-perf. Conv. to ENHR Conv. to SWD
- Plug Back Conv. to GSW Conv. to Producer
- Commingled Permit #: _____
- Dual Completion Permit #: _____
- SWD Permit #: _____
- ENHR Permit #: _____
- GSW Permit #: _____

| | | |
|-----------------------------------|-----------------|---|
| Spud Date or Recompletion Date | Date Reached TD | Completion Date or Recompletion Date |
|-----------------------------------|-----------------|---|

API No. 15 - _____

Spot Description: _____

_____ - _____ - _____ Sec. _____ Twp. _____ S. R. _____ East West

_____ Feet from North / South Line of Section

_____ Feet from East / West Line of Section

Footages Calculated from Nearest Outside Section Corner:

- NE NW SE SW

GPS Location: Lat: _____, Long: _____
(e.g. xx.xxxxx) (e.g. -xxx.xxxxx)

Datum: NAD27 NAD83 WGS84

County: _____

Lease Name: _____ Well #: _____

Field Name: _____

Producing Formation: _____

Elevation: Ground: _____ Kelly Bushing: _____

Total Vertical Depth: _____ Plug Back Total Depth: _____

Amount of Surface Pipe Set and Cemented at: _____ Feet

Multiple Stage Cementing Collar Used? Yes No

If yes, show depth set: _____ Feet

If Alternate II completion, cement circulated from: _____

feet depth to: _____ w/ _____ sx cmt.

Drilling Fluid Management Plan

(Data must be collected from the Reserve Pit)

Chloride content: _____ ppm Fluid volume: _____ bbls

Dewatering method used: _____

Location of fluid disposal if hauled offsite:

Operator Name: _____

Lease Name: _____ License #: _____

Quarter _____ Sec. _____ Twp. _____ S. R. _____ East West

County: _____ Permit #: _____

AFFIDAVIT

I am the affiant and I hereby certify that all requirements of the statutes, rules and regulations promulgated to regulate the oil and gas industry have been fully complied with and the statements herein are complete and correct to the best of my knowledge.

Submitted Electronically

KCC Office Use ONLY

- Confidentiality Requested
Date: _____
- Confidential Release Date: _____
- Wireline Log Received
- Geologist Report Received
- UIC Distribution
- ALT I II III Approved by: _____ Date: _____



1097099

Operator Name: _____ Lease Name: _____ Well #: _____

Sec. _____ Twp. _____ S. R. _____ East West County: _____

INSTRUCTIONS: Show important tops of formations penetrated. Detail all cores. Report all final copies of drill stems tests giving interval tested, time tool open and closed, flowing and shut-in pressures, whether shut-in pressure reached static level, hydrostatic pressures, bottom hole temperature, fluid recovery, and flow rates if gas to surface test, along with final chart(s). Attach extra sheet if more space is needed.

Final Radioactivity Log, Final Logs run to obtain Geophysical Data and Final Electric Logs must be emailed to kcc-well-logs@kcc.ks.gov. Digital electronic log files must be submitted in LAS version 2.0 or newer AND an image file (TIFF or PDF).

| | | | |
|---|--|---|---------------------------------|
| Drill Stem Tests Taken <i>(Attach Additional Sheets)</i> | <input type="checkbox"/> Yes <input type="checkbox"/> No | <input type="checkbox"/> Log Formation (Top), Depth and Datum | <input type="checkbox"/> Sample |
| Samples Sent to Geological Survey | <input type="checkbox"/> Yes <input type="checkbox"/> No | Name | Top Datum |
| Cores Taken | <input type="checkbox"/> Yes <input type="checkbox"/> No | | |
| Electric Log Run | <input type="checkbox"/> Yes <input type="checkbox"/> No | | |
| List All E. Logs Run: | | | |

| CASING RECORD <input type="checkbox"/> New <input type="checkbox"/> Used | | | | | | | |
|---|-------------------|---------------------------|-------------------|---------------|----------------|--------------|----------------------------|
| Report all strings set-conductor, surface, intermediate, production, etc. | | | | | | | |
| Purpose of String | Size Hole Drilled | Size Casing Set (In O.D.) | Weight Lbs. / Ft. | Setting Depth | Type of Cement | # Sacks Used | Type and Percent Additives |
| | | | | | | | |
| | | | | | | | |
| | | | | | | | |

| ADDITIONAL CEMENTING / SQUEEZE RECORD | | | | |
|---|------------------|----------------|--------------|----------------------------|
| Purpose: | Depth Top Bottom | Type of Cement | # Sacks Used | Type and Percent Additives |
| <input type="checkbox"/> Perforate | | | | |
| <input type="checkbox"/> Protect Casing | | | | |
| <input type="checkbox"/> Plug Back TD | | | | |
| <input type="checkbox"/> Plug Off Zone | | | | |

Did you perform a hydraulic fracturing treatment on this well? Yes No *(If No, skip questions 2 and 3)*

Does the volume of the total base fluid of the hydraulic fracturing treatment exceed 350,000 gallons? Yes No *(If No, skip question 3)*

Was the hydraulic fracturing treatment information submitted to the chemical disclosure registry? Yes No *(If No, fill out Page Three of the ACO-1)*

| Shots Per Foot | PERFORATION RECORD - Bridge Plugs Set/Type Specify Footage of Each Interval Perforated | Acid, Fracture, Shot, Cement Squeeze Record <i>(Amount and Kind of Material Used)</i> | Depth |
|----------------|---|--|-------|
| | | | |
| | | | |
| | | | |
| | | | |
| | | | |

TUBING RECORD: Size: _____ Set At: _____ Packer At: _____ Liner Run: Yes No

Date of First, Resumed Production, SWD or ENHR: _____ Producing Method: Flowing Pumping Gas Lift Other *(Explain)* _____

| Estimated Production Per 24 Hours | Oil Bbls. | Gas Mcf | Water Bbls. | Gas-Oil Ratio | Gravity |
|-----------------------------------|-----------|---------|-------------|---------------|---------|
| | | | | | |

| | | |
|--|---|---|
| DISPOSITION OF GAS: <input type="checkbox"/> Vented <input type="checkbox"/> Sold <input type="checkbox"/> Used on Lease <i>(If vented, Submit ACO-18.)</i> | METHOD OF COMPLETION: <input type="checkbox"/> Open Hole <input type="checkbox"/> Perf. <input type="checkbox"/> Dually Comp. <input type="checkbox"/> Commingled <i>(Submit ACO-5)</i> <i>(Submit ACO-4)</i> <input type="checkbox"/> Other <i>(Specify)</i> _____ | PRODUCTION INTERVAL: _____ _____ |
|--|---|---|



DRILL STEM TEST REPORT

Prepared For: **TDI Inc**

1310 Bison Rd
Hays KS 67601

ATTN: Tom Denning

Irvin Trust #2

13-15s-19w Irvin Trust #2

Start Date: 2012.08.13 @ 17:16:26

End Date: 2012.08.13 @ 22:18:41

Job Ticket #: 49350 DST #: 1

Trilobite Testing, Inc
PO Box 362 Hays, KS 67601
ph: 785-625-4778 fax: 785-625-5620

Printed: 2012.08.16 @ 15:38:14

TDI Inc
13-15s-19w Irvin Trust #2
Irvin Trust #2
DST # 1
Lansing A-D
2012.08.13



**TRILOBITE
TESTING, INC.**

DRILL STEM TEST REPORT

TDI Inc
1310 Bison Rd
Hays KS 67601
ATTN: Tom Denning

13-15s-19w Irvin Trust #2
Irvin Trust #2
Job Ticket: 49350 **DST#: 1**
Test Start: 2012.08.13 @ 17:16:26

GENERAL INFORMATION:

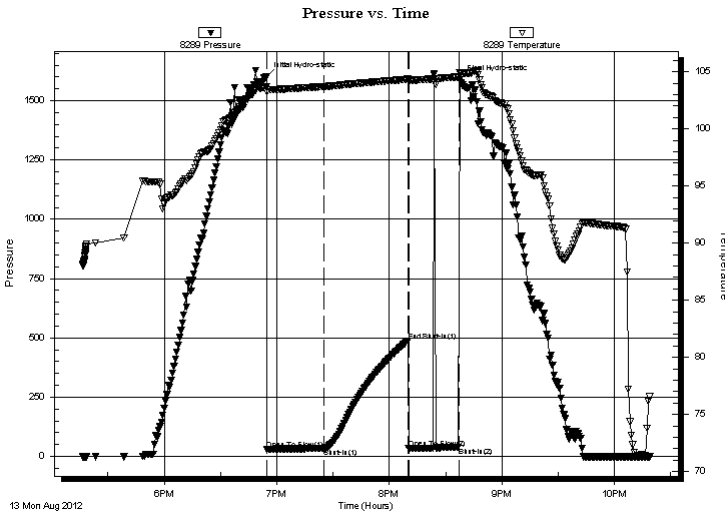
Formation: **Lansing A-D**
 Deviated: No Whipstock: ft (KB)
 Test Type: Conventional Bottom Hole (Initial)
 Time Tool Opened: 18:54:41
 Tester: Jeff Brown
 Time Test Ended: 22:18:41
 Unit No: 54
 Interval: **3290.00 ft (KB) To 3365.00 ft (KB) (TVD)**
 Reference Elevations: 2016.00 ft (KB)
 Total Depth: 3365.00 ft (KB) (TVD)
 2006.00 ft (CF)
 Hole Diameter: 7.88 inches
 Hole Condition: Good
 KB to GR/CF: 10.00 ft

Serial #: 8289 Outside

Press @ Run Depth: 33.21 psig @ 3328.00 ft (KB) Capacity: 8000.00 psig
 Start Date: 2012.08.13 End Date: 2012.08.13 Last Calib.: 2012.08.13
 Start Time: 17:16:28 End Time: 22:18:41 Time On Btm: 2012.08.13 @ 18:54:26
 Time Off Btm: 2012.08.13 @ 20:37:26

TEST COMMENT: IFP=Weak surface blow died out in 22 min
 ISI=dead no blow back
 FFP=Dead no blow flushed tool -Dead

PRESSURE SUMMARY



| Time (Min.) | Pressure (psig) | Temp (deg F) | Annotation |
|-------------|-----------------|--------------|----------------------|
| 0 | 1601.50 | 103.74 | Initial Hydro-static |
| 1 | 29.53 | 103.23 | Open To Flow (1) |
| 31 | 33.21 | 103.72 | Shut-In(1) |
| 76 | 486.22 | 104.36 | End Shut-In(1) |
| 76 | 34.18 | 104.19 | Open To Flow (2) |
| 103 | 37.95 | 104.56 | Shut-In(2) |
| 103 | 1587.78 | 104.93 | Final Hydro-static |

Recovery

| Length (ft) | Description | Volume (bbl) |
|-------------|--------------------------|--------------|
| 15.00 | Mud w ith oil spots 100% | 0.21 |
| | | |
| | | |
| | | |
| | | |

Gas Rates

| Choke (inches) | Pressure (psig) | Gas Rate (Mcf/d) |
|----------------|-----------------|------------------|
| | | |



**TRILOBITE
TESTING, INC.**

DRILL STEM TEST REPORT

TOOL DIAGRAM

TDI Inc
1310 Bison Rd
Hays KS 67601
ATTN: Tom Denning

13-15s-19w Irvin Trust #2
Irvin Trust #2
Job Ticket: 49350 **DST#: 1**
Test Start: 2012.08.13 @ 17:16:26

Tool Information

| | | | | | |
|---------------------------|--------------------|-----------------------|--------------------------------|------------------------|-------------|
| Drill Pipe: | Length: 3295.00 ft | Diameter: 3.80 inches | Volume: 46.22 bbl | Tool Weight: | 2000.00 lb |
| Heavy Wt. Pipe: | Length: 0.00 ft | Diameter: 2.70 inches | Volume: 0.00 bbl | Weight set on Packer: | 20000.00 lb |
| Drill Collar: | Length: 0.00 ft | Diameter: 2.25 inches | Volume: 0.00 bbl | Weight to Pull Loose: | 38000.00 lb |
| | | | <u>Total Volume: 46.22 bbl</u> | Tool Chased | 0.00 ft |
| Drill Pipe Above KB: | 26.00 ft | | | String Weight: Initial | 30000.00 lb |
| Depth to Top Packer: | 3290.00 ft | | | Final | 30000.00 lb |
| Depth to Bottom Packer: | ft | | | | |
| Interval between Packers: | 75.00 ft | | | | |
| Tool Length: | 96.00 ft | | | | |
| Number of Packers: | 2 | Diameter: 6.75 inches | | | |

Tool Comments:

| Tool Description | Length (ft) | Serial No. | Position | Depth (ft) | Accum. Lengths |
|-------------------------|--------------------|-------------------|-----------------|-------------------|-----------------------|
|-------------------------|--------------------|-------------------|-----------------|-------------------|-----------------------|

| | | | | | |
|-----------------|-------|------|---------|---------|------------------------------------|
| Change Over Sub | 1.00 | | | 3270.00 | |
| Shut In Tool | 5.00 | | | 3275.00 | |
| Hydraulic tool | 5.00 | | | 3280.00 | |
| Packer | 5.00 | | | 3285.00 | 21.00 Bottom Of Top Packer |
| Packer | 5.00 | | | 3290.00 | |
| Stubb | 1.00 | | | 3291.00 | |
| Perforations | 4.00 | | | 3295.00 | |
| Change Over Sub | 1.00 | | | 3296.00 | |
| Drill Pipe | 31.00 | | | 3327.00 | |
| Change Over Sub | 1.00 | | | 3328.00 | |
| Recorder | 0.00 | 8366 | Inside | 3328.00 | |
| Recorder | 0.00 | 8289 | Outside | 3328.00 | |
| Perforations | 34.00 | | | 3362.00 | |
| Bullnose | 3.00 | | | 3365.00 | 75.00 Bottom Packers & Anchor |

Total Tool Length: 96.00



**TRILOBITE
TESTING, INC.**

DRILL STEM TEST REPORT

FLUID SUMMARY

TDI Inc
1310 Bison Rd
Hays KS 67601
ATTN: Tom Denning

13-15s-19w Irvin Trust #2
Irvin Trust #2
Job Ticket: 49350
Test Start: 2012.08.13 @ 17:16:26

DST#: 1

Mud and Cushion Information

| | | | |
|----------------------------------|----------------------------|-----------------|---------|
| Mud Type: Gel Chem | Cushion Type: | Oil API: | deg API |
| Mud Weight: 9.00 lb/gal | Cushion Length: ft | Water Salinity: | ppm |
| Viscosity: 53.00 sec/qt | Cushion Volume: bbl | | |
| Water Loss: 7.19 in ³ | Gas Cushion Type: | | |
| Resistivity: ohm.m | Gas Cushion Pressure: psig | | |
| Salinity: 2200.00 ppm | | | |
| Filter Cake: inches | | | |

Recovery Information

Recovery Table

| Length ft | Description | Volume bbl |
|--------------|-------------------------|---------------|
| 15.00 | Mud with oil spots 100% | 0.210 |

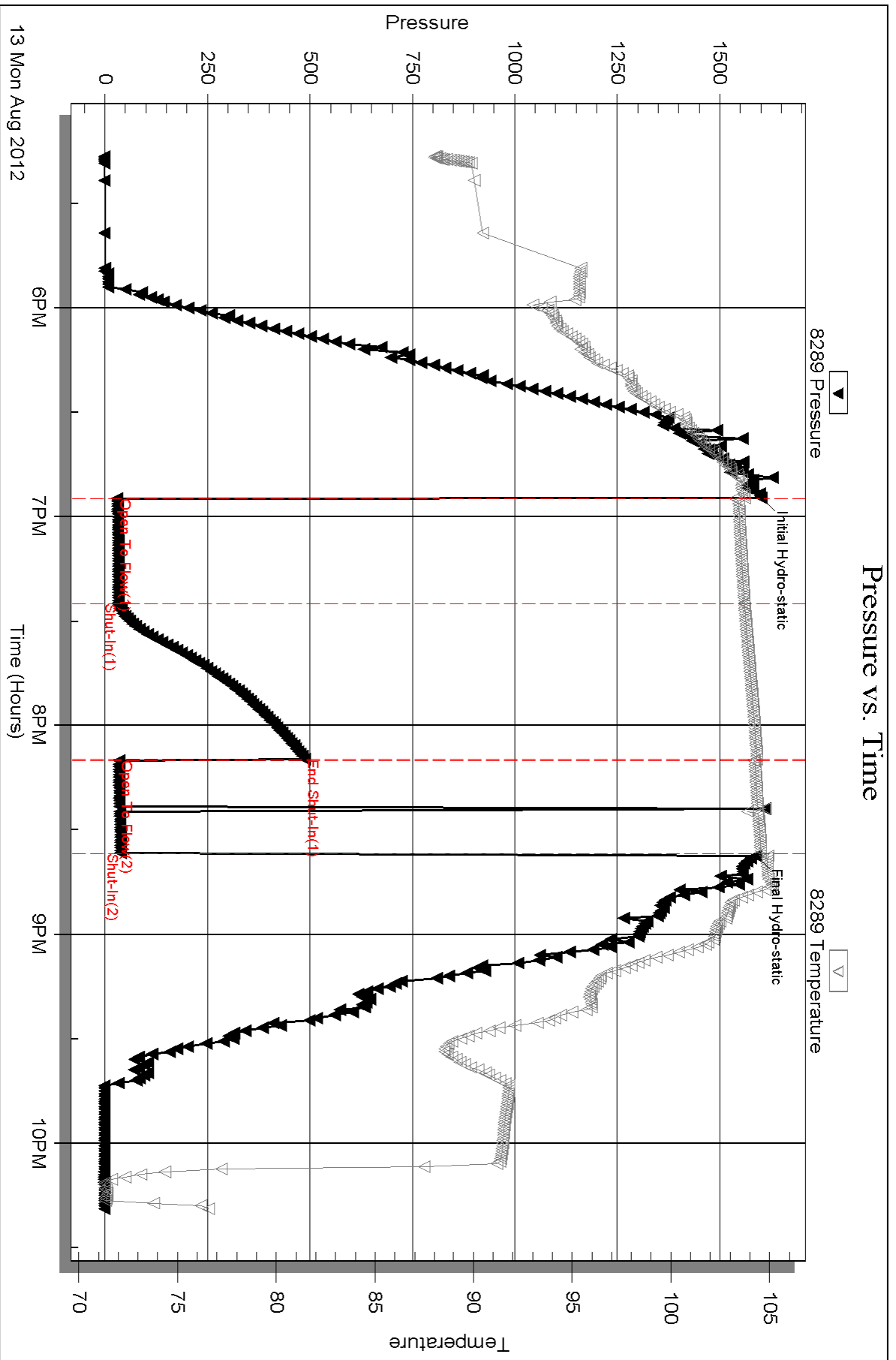
Total Length: 15.00 ft Total Volume: 0.210 bbl

Num Fluid Samples: 0 Num Gas Bombs: 0 Serial #:

Laboratory Name: Laboratory Location:

Recovery Comments:

Pressure vs. Time



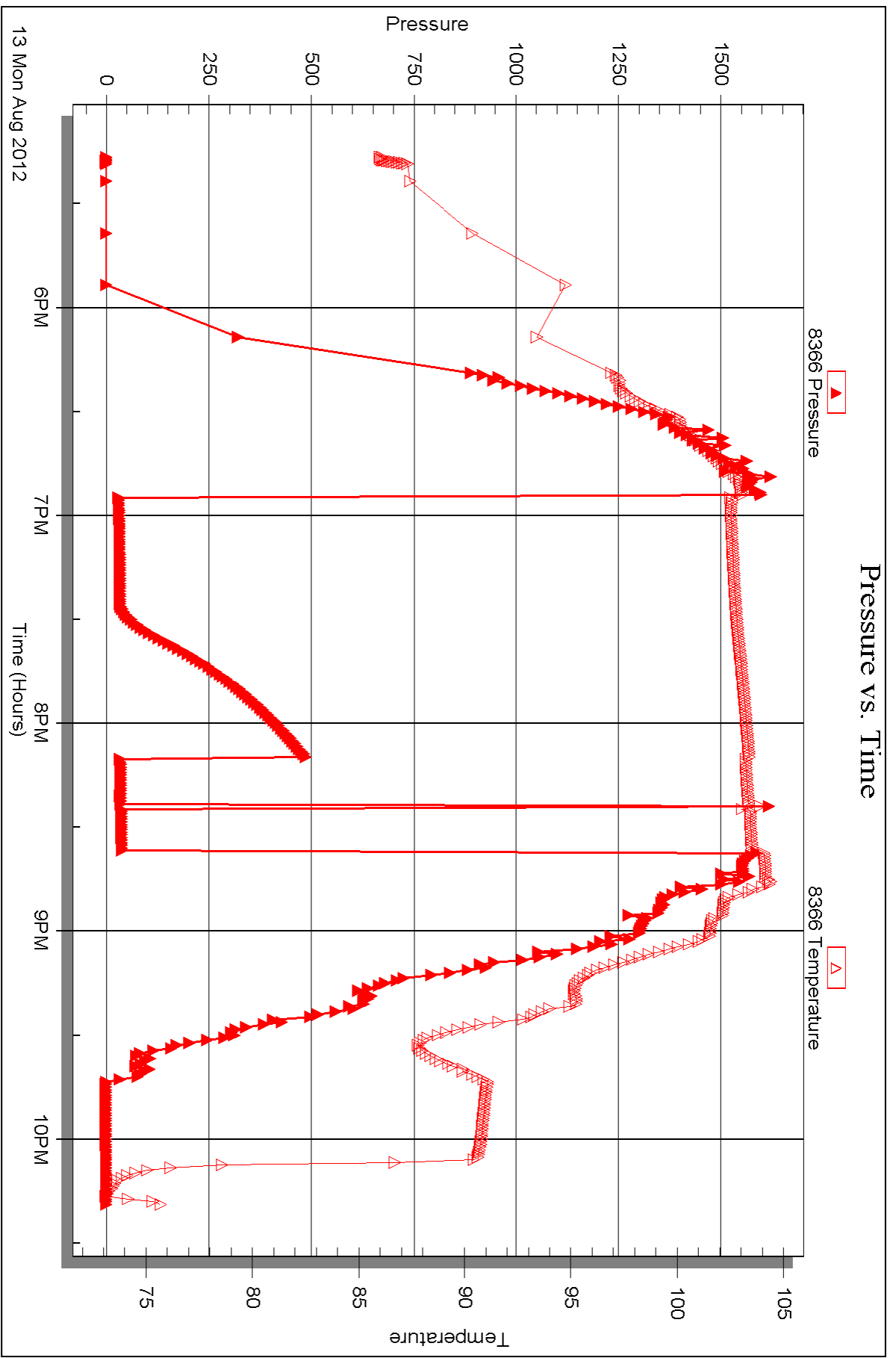
Serial #: 8366

Inside

TDI Inc

Ivin Trust #2

DST Test Number: 1





DRILL STEM TEST REPORT

Prepared For: **TDI Inc**

1310 Bison Rd
Hays KS 67601

ATTN: Tom Denning

Irvin Trust #2

13-15s-19w Irvin Trust #2

Start Date: 2012.08.14 @ 12:25:48

End Date: 2012.08.14 @ 19:06:33

Job Ticket #: 48526 DST #: 2

Trilobite Testing, Inc
PO Box 362 Hays, KS 67601
ph: 785-625-4778 fax: 785-625-5620

Printed: 2012.08.16 @ 15:37:27

TDI Inc
13-15s-19w Irvin Trust #2
Irvin Trust #2
DST # 2
LKC H-I-J
2012.08.14



TRILOBITE TESTING, INC.

DRILL STEM TEST REPORT

TDI Inc
 1310 Bison Rd
 Hays KS 67601
 ATTN: Tom Denning

13-15s-19w Irvin Trust #2
Irvin Trust #2
 Job Ticket: 48526 **DST#: 2**
 Test Start: 2012.08.14 @ 12:25:48

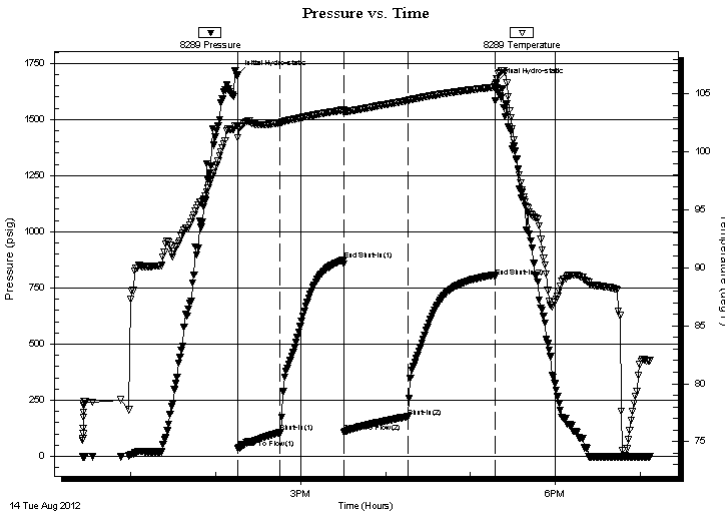
GENERAL INFORMATION:

Formation: **LKC H-I-J**
 Deviated: No Whipstock: ft (KB)
 Time Tool Opened: 14:15:33
 Time Test Ended: 19:06:33
 Interval: **3430.00 ft (KB) To 3500.00 ft (KB) (TVD)**
 Total Depth: 3500.00 ft (KB) (TVD)
 Hole Diameter: 7.88 inches Hole Condition: Good
 Test Type: Conventional Bottom Hole (Reset)
 Tester: Jeff Brown
 Unit No: 54
 Reference Elevations: 2016.00 ft (KB)
 2006.00 ft (CF)
 KB to GR/CF: 10.00 ft

Serial #: 8289 Outside
 Press @ Run Depth: 176.99 psig @ 3467.00 ft (KB) Capacity: 8000.00 psig
 Start Date: 2012.08.14 End Date: 2012.08.14 Last Calib.: 2012.08.14
 Start Time: 12:25:50 End Time: 19:06:33 Time On Btm: 2012.08.14 @ 14:15:18
 Time Off Btm: 2012.08.14 @ 17:18:03

TEST COMMENT: IFP=Good blow BOB in 18 min
 ISI=Weak blow back buit to 1 in Died back to 1/4 in
 FFP=Good blow BOB in 7 3/4 min
 FSI=Weak surface blow built to 1 1/2 in Died back to 1/2 in

PRESSURE SUMMARY



| Time (Min.) | Pressure (psig) | Temp (deg F) | Annotation |
|-------------|-----------------|--------------|----------------------|
| 0 | 1697.68 | 102.25 | Initial Hydro-static |
| 1 | 36.83 | 101.23 | Open To Flow (1) |
| 30 | 107.45 | 102.53 | Shut-In(1) |
| 75 | 874.46 | 103.63 | End Shut-In(1) |
| 76 | 108.41 | 103.39 | Open To Flow (2) |
| 121 | 176.99 | 104.44 | Shut-In(2) |
| 182 | 801.30 | 105.60 | End Shut-In(2) |
| 183 | 1665.80 | 105.96 | Final Hydro-static |

Recovery

| Length (ft) | Description | Volume (bbl) |
|-------------|----------------------------|--------------|
| 126.00 | MW with oil spots 20%M 0%W | 1.77 |
| 126.00 | V SOCGWM 8%G 2%O 5%W 85%M | 1.77 |
| 73.00 | GMCO 5%G 45%M 50%O | 1.02 |
| 0.00 | 462-GIP | 0.00 |
| | | |
| | | |

* Recovery from multiple tests

Gas Rates

| Choke (inches) | Pressure (psig) | Gas Rate (Mcf/d) |
|----------------|-----------------|------------------|
| | | |



**TRILOBITE
TESTING, INC.**

DRILL STEM TEST REPORT

TOOL DIAGRAM

TDI Inc
1310 Bison Rd
Hays KS 67601
ATTN: Tom Denning

13-15s-19w Irvin Trust #2
Irvin Trust #2
Job Ticket: 48526 **DST#: 2**
Test Start: 2012.08.14 @ 12:25:48

Tool Information

| | | | | |
|---------------------------|--------------------|-----------------------|--------------------------------|------------------------------------|
| Drill Pipe: | Length: 3420.00 ft | Diameter: 3.80 inches | Volume: 47.97 bbl | Tool Weight: 2000.00 lb |
| Heavy Wt. Pipe: | Length: 0.00 ft | Diameter: 2.70 inches | Volume: 0.00 bbl | Weight set on Packer: 20000.00 lb |
| Drill Collar: | Length: 0.00 ft | Diameter: 2.25 inches | Volume: 0.00 bbl | Weight to Pull Loose: lb |
| | | | <u>Total Volume: 47.97 bbl</u> | Tool Chased 0.00 ft |
| Drill Pipe Above KB: | 11.00 ft | | | String Weight: Initial 30000.00 lb |
| Depth to Top Packer: | 3430.00 ft | | | Final lb |
| Depth to Bottom Packer: | ft | | | |
| Interval between Packers: | 70.00 ft | | | |
| Tool Length: | 91.00 ft | | | |
| Number of Packers: | 2 | Diameter: 6.75 inches | | |

Tool Comments:

| Tool Description | Length (ft) | Serial No. | Position | Depth (ft) | Accum. Lengths |
|-------------------------|--------------------|-------------------|-----------------|-------------------|-----------------------|
|-------------------------|--------------------|-------------------|-----------------|-------------------|-----------------------|

| | | | | | |
|-----------------|-------|------|---------|---------|-------------------------------|
| Change Over Sub | 1.00 | | | 3410.00 | |
| Shut In Tool | 5.00 | | | 3415.00 | |
| Hydraulic tool | 5.00 | | | 3420.00 | |
| Packer | 5.00 | | | 3425.00 | 21.00 Bottom Of Top Packer |
| Packer | 5.00 | | | 3430.00 | |
| Stubb | 1.00 | | | 3431.00 | |
| Perforations | 3.00 | | | 3434.00 | |
| Change Over Sub | 1.00 | | | 3435.00 | |
| Drill Pipe | 31.00 | | | 3466.00 | |
| Change Over Sub | 1.00 | | | 3467.00 | |
| Recorder | 0.00 | 8366 | Inside | 3467.00 | |
| Recorder | 0.00 | 8289 | Outside | 3467.00 | |
| Perforations | 30.00 | | | 3497.00 | |
| Bullnose | 3.00 | | | 3500.00 | 70.00 Bottom Packers & Anchor |

Total Tool Length: 91.00



**TRILOBITE
TESTING, INC.**

DRILL STEM TEST REPORT

FLUID SUMMARY

TDI Inc
1310 Bison Rd
Hays KS 67601
ATTN: Tom Denning

13-15s-19w Irvin Trust #2
Irvin Trust #2
Job Ticket: 48526 **DST#: 2**
Test Start: 2012.08.14 @ 12:25:48

Mud and Cushion Information

| | | | |
|----------------------------------|----------------------------|-----------------|---------|
| Mud Type: Gel Chem | Cushion Type: | Oil API: | deg API |
| Mud Weight: 9.00 lb/gal | Cushion Length: ft | Water Salinity: | ppm |
| Viscosity: 53.00 sec/qt | Cushion Volume: bbl | | |
| Water Loss: 7.18 in ³ | Gas Cushion Type: | | |
| Resistivity: ohm.m | Gas Cushion Pressure: psig | | |
| Salinity: 2400.00 ppm | | | |
| Filter Cake: inches | | | |

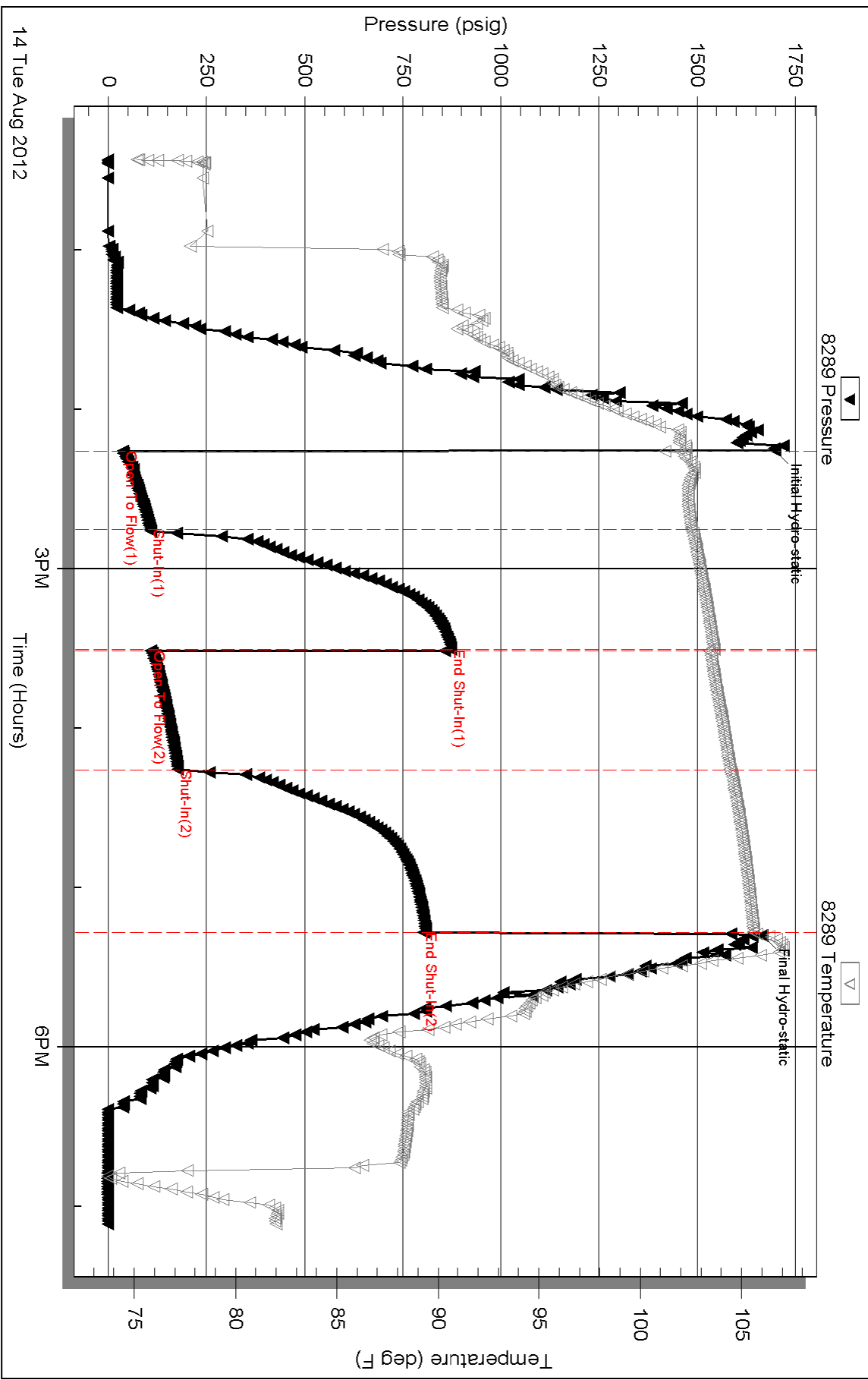
Recovery Information

Recovery Table

| Length ft | Description | Volume bbl |
|--------------|-----------------------------|---------------|
| 126.00 | MW w ith oil spots 20%M 0%W | 1.767 |
| 126.00 | VSOCGWM 8%G 2%O 5%W 85%M | 1.767 |
| 73.00 | GMCO 5%G 45%M 50%O | 1.024 |
| 0.00 | 462-GIP | 0.000 |

Total Length: 325.00 ft Total Volume: 4.558 bbl
 Num Fluid Samples: 0 Num Gas Bombs: 0 Serial #:
 Laboratory Name: Laboratory Location:
 Recovery Comments:

Pressure vs. Time



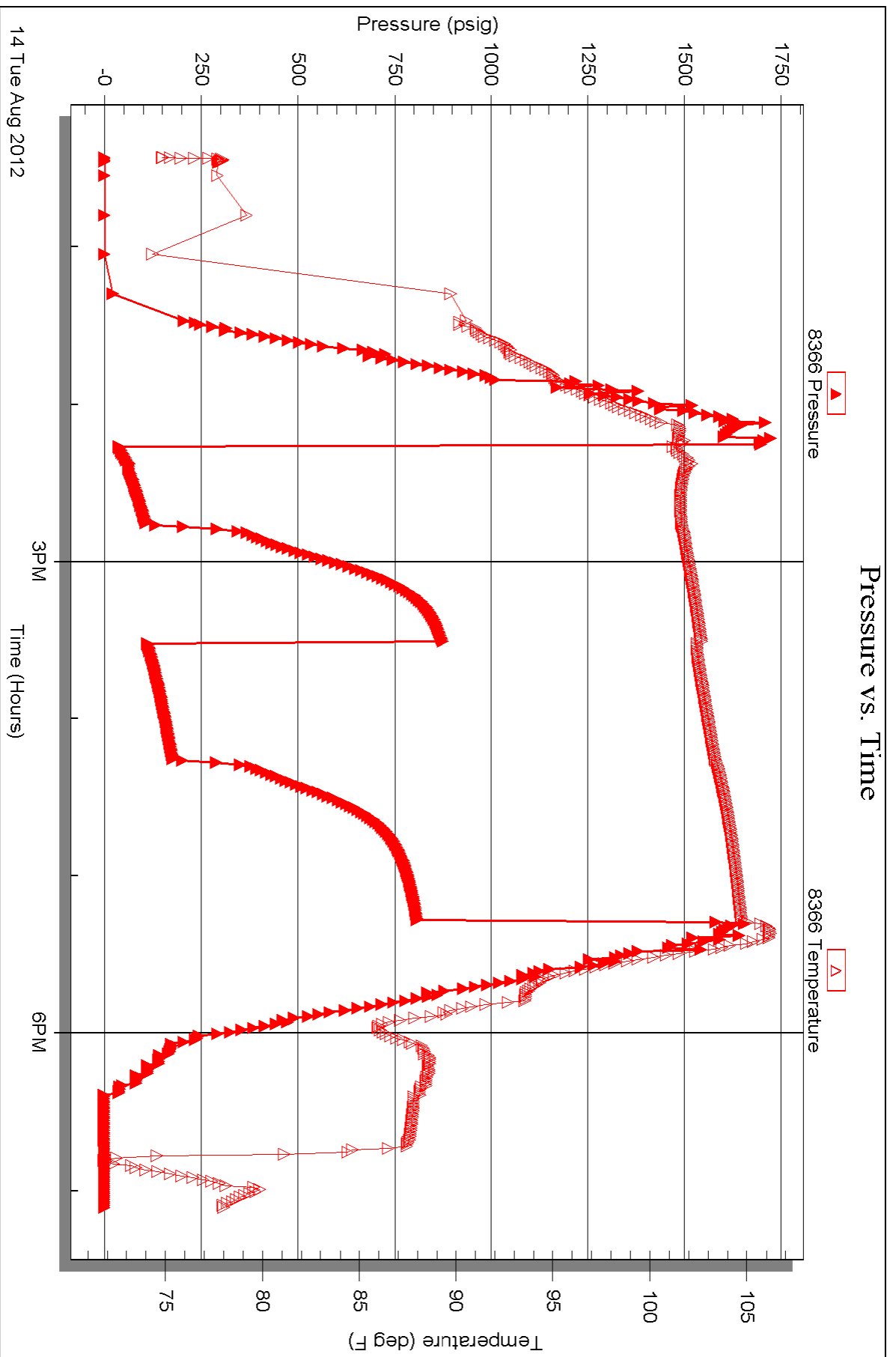
Serial #: 8366

Inside

TDI Inc

Iwin Trust #2

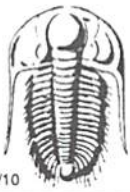
DST Test Number: 2



Triobite Testing, Inc

Ref. No: 48526

Printed: 2012.08.16 @ 15:37:30



TRILOBITE TESTING INC.

P.O. Box 1733 • Hays, Kansas 67601

Test Ticket

NO. 49350

Well Name & No. Irvin Trust #2 Test No. 1 Date 8-13-12
 Company TDI Inc Elevation 2016 KB 2006 GL
 Address 1310 BISON RD Hays KS 67601 + 9696
 Co. Rep / Geo. Herb Deines Rig Southwind #1
 Location: Sec. 13 Twp. 15 S Rge. 19 W Co. ELLIS State KS

Interval Tested 3290-3345 Zone Tested LANSING - A-D
 Anchor Length 75 Drill Pipe Run 3295 Mud Wt. 8.9
 Top Packer Depth 3285 Drill Collars Run 0 Vis 53
 Bottom Packer Depth 3290 Wt. Pipe Run 0 WL 7.2
 Total Depth 3345 Chlorides 2200 ppm System LCM 1

Blow Description PP-Weak Surface Blow Died OUT IN 22 min
1st-Dead No Blow Back
PP-Dead No Blow Flushed TOOL-Dead

| Rec | Feet of | %gas | %oil | %water | %mud |
|-----------|---------------------------|------|------|------------|------|
| <u>15</u> | <u>mud with oil spots</u> | | | <u>100</u> | |
| Rec | Feet of | %gas | %oil | %water | %mud |
| Rec | Feet of | %gas | %oil | %water | %mud |
| Rec | Feet of | %gas | %oil | %water | %mud |
| Rec | Feet of | %gas | %oil | %water | %mud |

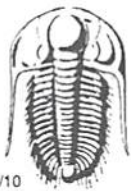
Rec Total 15 BHT _____ Gravity _____ API RW _____ @ _____ °F Chlorides _____ ppm

(A) Initial Hydrostatic 11002 Test 1150 T-On Location 16:37
 (B) First Initial Flow 30 Jars _____ T-Started 17:16
 (C) First Final Flow 33 Safety Joint _____ T-Open 18:55
 (D) Initial Shut-In 48L Circ Sub _____ T-Pulled 20:35
 (E) Second Initial Flow 34 Hourly Standby _____ T-Out 22:18
 (F) Second Final Flow _____ Mileage 32 RT ^{49.60} Comments _____
 (G) Final Shut-In _____ Sampler _____
 (H) Final Hydrostatic 1588 Straddle _____ Ruined Shale Packer _____

Initial Open 30 Shale Packer _____ Ruined Packer _____
 Initial Shut-In 45 Extra Packer _____ Extra Copies _____
 Final Flow 25 Extra Recorder _____ Sub Total 0
 Final Shut-In _____ Day Standby _____ Total 1199.60
 _____ Accessibility _____ MP/DST Disc't _____
 Sub Total 1199.60

Approved By _____ Our Representative Jeff Brown

Trilobite Testing Inc. shall not be liable for damaged of any kind of the property or personnel of the one for whom a test is made, or for any loss suffered or sustained, directly or indirectly, through the use of its equipment, or its statements or opinion concerning the results of any test, tools lost or damaged in the hole shall be paid for at cost by the party for whom the test is made.



TRILOBITE TESTING INC.

P.O. Box 1733 • Hays, Kansas 67601

Test Ticket

NO. 48526

Well Name & No. Irvin Trust #2 Test No. 2 Date 8-14-12
 Company TDI INC Elevation 2014 KB 2004 GL
 Address 1310 BISON RD Hays KS 67601 + 9696
 Co. Rep / Geo. Herb Deines Rig SOUTHWIND #1
 Location: Sec. 13 Twp. 15S Rge. 19W Co. ELLIS State Ks

Interval Tested 3430 - 3500 Zone Tested LKC - H-I-J
 Anchor Length 70 Drill Pipe Run 3420 Mud Wt. 9.0
 Top Packer Depth 3425 Drill Collars Run 0 Vis 53
 Bottom Packer Depth 3430 Wt. Pipe Run 0 WL 7.2
 Total Depth 3500 Chlorides 2400 ppm System LCM 1

Blow Description PP-GOOD Blow BOB IN 18 min
ISI-Weak Surface Blow Back Built to 1 IN Died Back to 1/4 IN
PP-GOOD Blow BOB IN 7 3/4 min
ISI-Weak Surface Blow Built to 1 1/2 IN Died back to 1/2 IN

| Rec | Feet of | %gas | %oil | %water | %mud |
|------------|--------------------------|----------|-----------|-----------|-----------|
| <u>126</u> | <u>MW with oil spots</u> | | | <u>80</u> | <u>20</u> |
| <u>126</u> | <u>USOC GWM</u> | <u>8</u> | <u>2</u> | <u>5</u> | <u>85</u> |
| <u>73</u> | <u>Comco</u> | <u>5</u> | <u>50</u> | | <u>45</u> |
| | <u>462-GIP</u> | | | | |
| | | | | | |

Rec Total 325 BHT 106 Gravity _____ API RW 131 @ 84.8 °F Chlorides 48,000 ppm

(A) Initial Hydrostatic 1698 Test 1150 T-On Location 9:26/12:14
 (B) First Initial Flow 37 Jars T-Started 12:25
 (C) First Final Flow 107 Safety Joint T-Open 14:15
 (D) Initial Shut-In 874 Circ Sub T-Pulled 17:15
 (E) Second Initial Flow 108 Hourly Standby T-Out 19:05
 (F) Second Final Flow 177 Mileage 49.60 Comments _____
 (G) Final Shut-In 801 Sampler _____
 (H) Final Hydrostatic 1460 Straddle _____
 Ruined Shale Packer _____
 Ruined Packer _____

Initial Open 30 Extra Packer _____
 Initial Shut-In 45 Extra Recorder _____
 Final Flow 45 Day Standby _____
 Final Shut-In 600 Accessibility _____
 Sub Total 1199.60 MP/DST Disc't _____

Approved By _____ Our Representative Jeff Brown

Trilobite Testing Inc. shall not be liable for damaged of any kind of the property or personnel of the one for whom a test is made, or for any loss suffered or sustained, directly or indirectly, through the use of its equipment, or its statements or opinion concerning the results of any test, tools lost or damaged in the hole shall be paid for at cost by the party for whom the test is made.

OPERATOR

Company: TDI, INC.
 Address: 1310 BISON ROAD
 HAYS, KANSAS 67601

Contact Geologist: TOM DENNING
 Contact Phone Nbr: 785-259-3141
 Well Name: IRVIN TRUST # 2
 Location: NW SE SE SW Sec.13-15s-19w
 Pool: INFIELD
 State: KANSAS

API: 15-051-26,311-00-00
 Field: UNNAMED
 Country: USA



TDI, Inc.
 1310 BISON ROAD
 HAYS, KANSAS 67601
 (785) 628-2593

Scale 1:240 Imperial

Well Name: IRVIN TRUST # 2
 Surface Location: NW SE SE SW Sec.13-15s-19w
 Bottom Location:
 API: 15-051-26,311-00-00
 License Number: 4787
 Spud Date: 8/9/2012 Time: 3:00 PM
 Region: ELLIS COUNTY
 Drilling Completed: 8/15/2012 Time: 7:57 AM
 Surface Coordinates: 410' FSL & 2035' FWL
 Bottom Hole Coordinates:
 Ground Elevation: 2007.00ft
 K.B. Elevation: 2017.00ft
 Logged Interval: 2900.00ft To: 3750.00ft
 Total Depth: 3750.00ft
 Formation: LANSING-KANSAS CITY
 Drilling Fluid Type: FRESH WATER GEL/CHEMICAL

SURFACE CO-ORDINATES

Well Type: Vertical
 Longitude: Latitude:
 N/S Co-ord: 410' FSL
 E/W Co-ord: 2035' FWL

LOGGED BY

Company: SOLUTIONS CONSULTING
 Address: 108 W 35TH
 HAYS, KANSAS 67601

Phone Nbr: (785) 639-1337
 Logged By: GEOLOGIST Name: HERB DEINES

CONTRACTOR

Contractor: SOUTHWIND DRILLING, INC.
 Rig #: 1
 Rig Type: MUD ROTARY

Rig Type: MUD ROTARY
Spud Date: 8/9/2012
TD Date: 8/15/2012
Rig Release: 8/16/2012

Time: 3:00 PM
Time: 7:57 AM
Time: 1:00 AM

ELEVATIONS

K.B. Elevation: 2017.00ft
K.B. to Ground: 10.00ft

Ground Elevation: 2007.00ft

NOTES

RECOMMENDATION TO RUN CASING TO FURTHER TEST AND DEVELOP NUMEROUS SHOW ZONES BASED ON FAVORABLE STRUCTURE TO OFFSET PRODUCERS AND POSITIVE RESULTS OF DST # 2.

LOG-TECH RAN DUAL INDUCTION LOG, DUAL COMPENSATED POROSITY LOG AND MICRORESISTIVITY LOG

FORMATION TOPS SUMMARY AND CHRONOLOGY OF DAILY ACTIVITY

IRVIN TRUST # 2
410' FSL & 2035' FWL, SW/4
Sec.13-15s-19w
2007' GL 2017' KB


| <u>FORMATION</u> | <u>SAMPLE TOPS</u> | <u>LOG TOPS</u> |
|-------------------|--------------------|-----------------|
| Anhydrite | 1196+ 821 | 1195+ 822 |
| B-Anhydrite | 1231+ 786 | 1230+ 787 |
| Topeka | 2978- 961 | 2977- 960 |
| Heebner Shale | 3262-1245 | 3260-1243 |
| Toronto | 3281-1267 | 3280-1263 |
| LKC | 3307-1290 | 3305-1288 |
| BKC | 3545-1528 | 3544-1527 |
| Conglomerate Sand | | 3621-1604 |
| Arbuckle | | 3629-1612 |
| RTD | 3750-1733 | |
| LTD | | 3749-1732 |

SUMMARY OF DAILY ACTIVITY

8-09-12 RU, Spud at 3:00PM
8-10-12 1206' set 8 5/8" surface casing to 1205' w/450 sacks of Common, 2%Gel, 3% CC, plug down 12:15 PM, WOC 12 hours, slope 1 ¼ degree .

- 8-11-12 1543', drilling
- 8-12-12 2550', drilling, mud up
- 8-13-12 3265', drilling, DST # 1 3290'-3365'
- 8-14-12 3489', drilling, DST # 2, 3430'-3500'
- 8-15-12 3711', drilling, RTD 3750', Logs, run 5 ½ "production casing. Set casing to 3746' with 125 sacks EA2
- 8-16-12 3750', finish cementing bottom stage, rig down

DST # 1 TEST SUMMARY

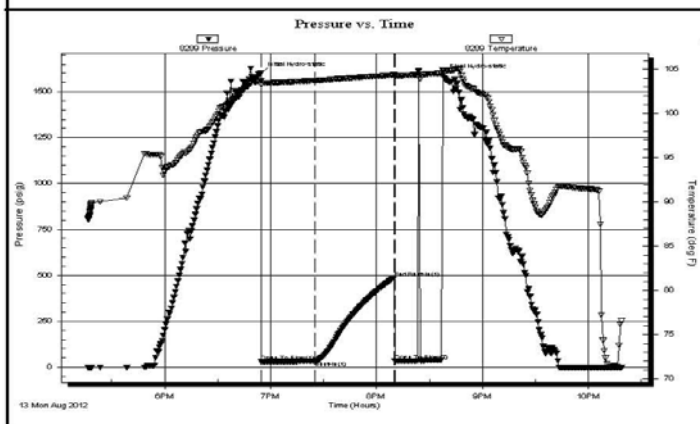
| | | |
|---|--|---|
|  TRILOBITE TESTING, INC. | DRILL STEM TEST REPORT | |
| | TDI Inc 1310 Bison Rd Hays Ks 67601 ATTN: Tom Denning | 13-15s-19w Irvin Trust #2 Job Ticket: 49350 DST#: 1 Test Start: 2012.08.13 @ 17:16:26 |

GENERAL INFORMATION:

| | |
|---|---|
| Formation: Lansing A-D | Test Type: Conventional Bottom Hole (Initial) |
| Deviated: No Whipstock ft (KB) | Tester: Jeff Brown |
| Time Tool Opened: 18:54:41 | Unit No: 54 |
| Time Test Ended: 22:18:41 | Reference Elevations: 2016.00 ft (KB) |
| Interval: 3290.00 ft (KB) To 3365.00 ft (KB) (TVD) | 2006.00 ft (CF) |
| Total Depth: 3365.00 ft (KB) (TVD) | KB to GR/CF: 10.00 ft |
| Hole Diameter: 7.88 inches | Hole Condition: Good |

| | |
|--|-------------------------------------|
| Serial #: 8289 Outside | Capacity: 8000.00 psig |
| Press@RunDepth: 33.21 psig @ 3328.00 ft (KB) | Last Calib.: 2012.08.13 |
| Start Date: 2012.08.13 End Date: 2012.08.13 | Time On Btm: 2012.08.13 @ 18:54:26 |
| Start Time: 17:16:28 End Time: 22:18:41 | Time Off Btm: 2012.08.13 @ 20:37:26 |

TEST COMMENT: IFF=Weak surface blow died out in 22 min
 IS=dead no blow back
 FFF=Dead no blow flushed tool -Dead



| PRESSURE SUMMARY | | | |
|------------------|-----------------|--------------|----------------------|
| Time (Min.) | Pressure (psig) | Temp (deg F) | Annotation |
| 0 | 1601.50 | 103.74 | Initial Hydro-static |
| 1 | 29.53 | 103.23 | Open To Flow (1) |
| 31 | 33.21 | 103.72 | Shut-In(1) |
| 76 | 486.22 | 104.36 | End Shut-In(1) |
| 76 | 34.18 | 104.19 | Open To Flow (2) |
| 103 | 1587.78 | 104.93 | Final Hydro-static |

| Recovery | | |
|-------------|-------------------------|--------------|
| Length (ft) | Description | Volume (bbl) |
| 15.00 | Mud with oil spots 100% | 0.21 |
| | | |
| | | |
| | | |

| Gas Rates | | | |
|-----------|----------------|-----------------|------------------|
| | Choke (inches) | Pressure (psig) | Gas Rate (Mcf/d) |
| | | | |

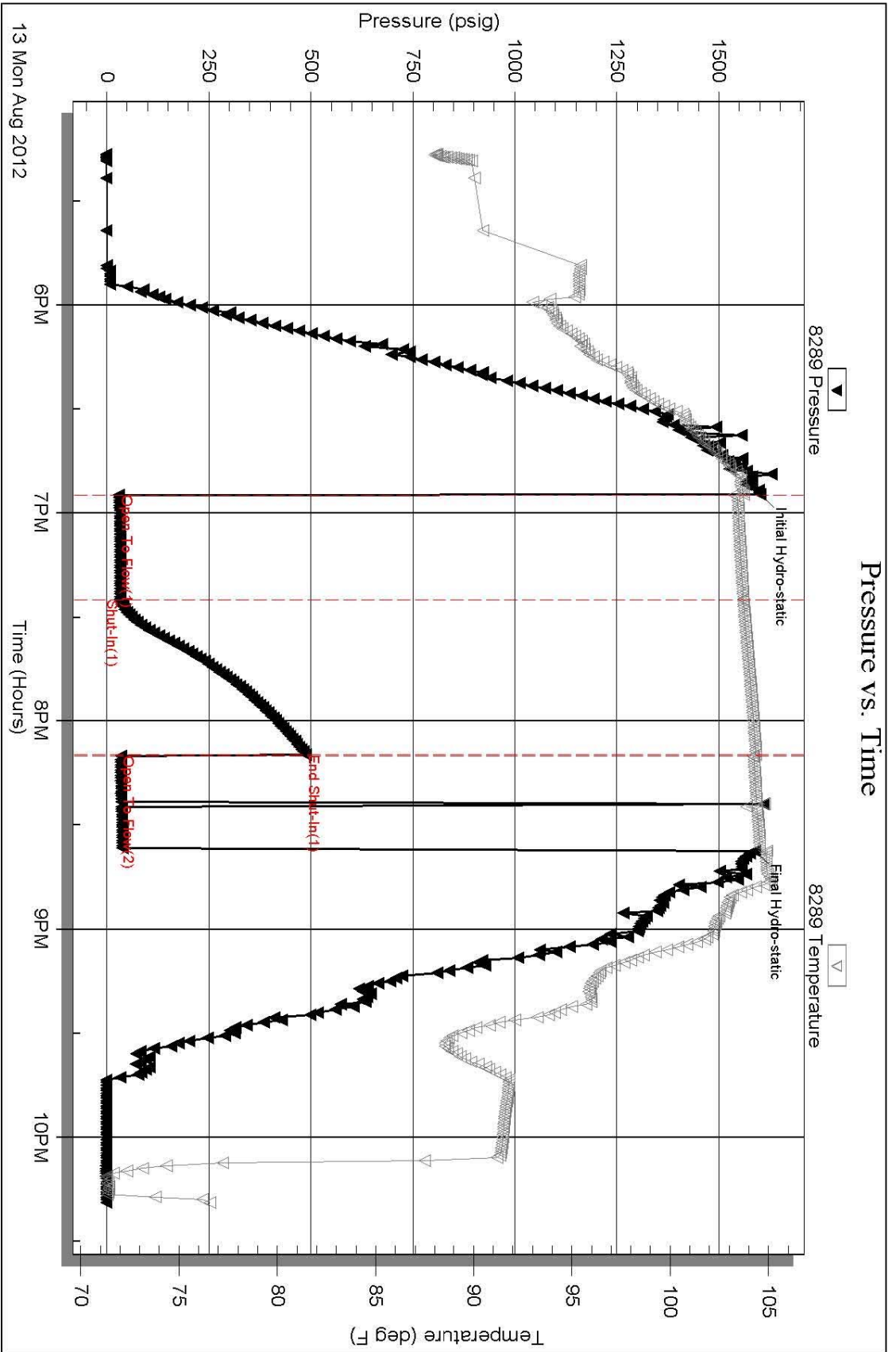
DST # 1 EXPANDED CHART

Serial #: 8289

Outside TDI Inc

Iv/in Trust #2

DST Test Number: 1




Tribbite Testing, Inc

Ref. No: 49350

Printed: 2012.08.14 @ 01:12:06

DST # 2 TEST SUMMARY

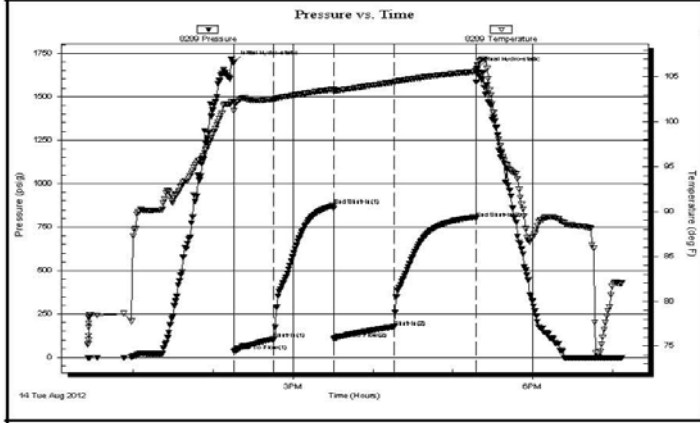
| | | |
|--|--|---|
|  TRILOBITE TESTING, INC. | DRILL STEM TEST REPORT | |
| | TDI Inc 1310 Bison Rd Hays Ks 67601 ATTN: Tom Denning | 13-15s-19w Irvin Trust #2 Job Ticket: 48526 DST#: 2 Test Start: 2012.08.14 @ 12:25:48 |

GENERAL INFORMATION:

| | |
|---|---|
| Formation: LKC-H-I-J | Test Type: Conventional Bottom Hole (Reset) |
| Deviated: No Whipstock ft (KB) | Tester: Jeff Brown |
| Time Tool Opened: 14:15:33 | Unit No: 54 |
| Time Test Ended: 19:06:33 | Reference Elevations: 2016.00 ft (KB) |
| Interval: 3430.00 ft (KB) To 3500.00 ft (KB) (TVD) | 2006.00 ft (CF) |
| Total Depth: 3500.00 ft (KB) (TVD) | KB to GR/CF: 10.00 ft |
| Hole Diameter: 7.88 inches | Hole Condition: Good |

| | | |
|---|----------------------|-------------------------------------|
| Serial #: 8289 | Outside | Capacity: 8000.00 psig |
| Press@RunDepth: 176.99 psig @ 3467.00 ft (KB) | End Date: 2012.08.14 | Last Calib.: 2012.08.14 |
| Start Date: 2012.08.14 | End Time: 19:06:33 | Time On Btm: 2012.08.14 @ 14:15:18 |
| Start Time: 12:25:50 | | Time Off Btm: 2012.08.14 @ 17:18:03 |

TEST COMMENT: IFF=Good blow BOB in 18 min
 IS=Weak blow back built to 1 in Died back to 1/4 in
 FFP=Good blow BOB in 7 3/4 min
 FS=Weak surface blow built to 1 1/2 in Died back to 1/2 in



| PRESSURE SUMMARY | | | |
|------------------|-----------------|--------------|----------------------|
| Time (Min.) | Pressure (psig) | Temp (deg F) | Annotation |
| 0 | 1697.68 | 102.25 | Initial Hydro-static |
| 1 | 36.83 | 101.23 | Open To Flow (1) |
| 30 | 107.45 | 102.53 | Shut-In(1) |
| 75 | 874.46 | 103.63 | End Shut-In(1) |
| 76 | 108.41 | 103.39 | Open To Flow (2) |
| 121 | 176.99 | 104.44 | Shut-In(2) |
| 182 | 801.30 | 105.60 | End Shut-In(2) |
| 183 | 1665.80 | 105.96 | Final Hydro-static |

| Recovery | | |
|-------------|-------------------------------|--------------|
| Length (ft) | Description | Volume (bbl) |
| 126.00 | MW with oil spots 20% M 0% W | 1.77 |
| 126.00 | V SOCGWM 8% G 2% O 5% W 85% M | 1.77 |
| 73.00 | GMCO 5% G 45% M 50% O | 1.02 |
| 0.00 | 462-GIP | 0.00 |
| | | |

* Recovery from multiple tests

| Gas Rates | | | |
|----------------|-----------------|------------------|--|
| Choke (inches) | Pressure (psig) | Gas Rate (Mcf/d) | |
| | | | |

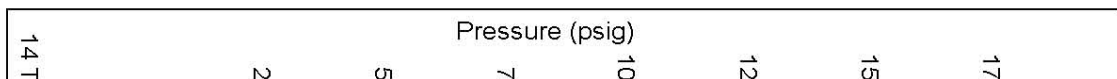
Trilobite Testing, Inc

Ref. No: 48526

Printed: 2012.08.14 @ 22:07:36

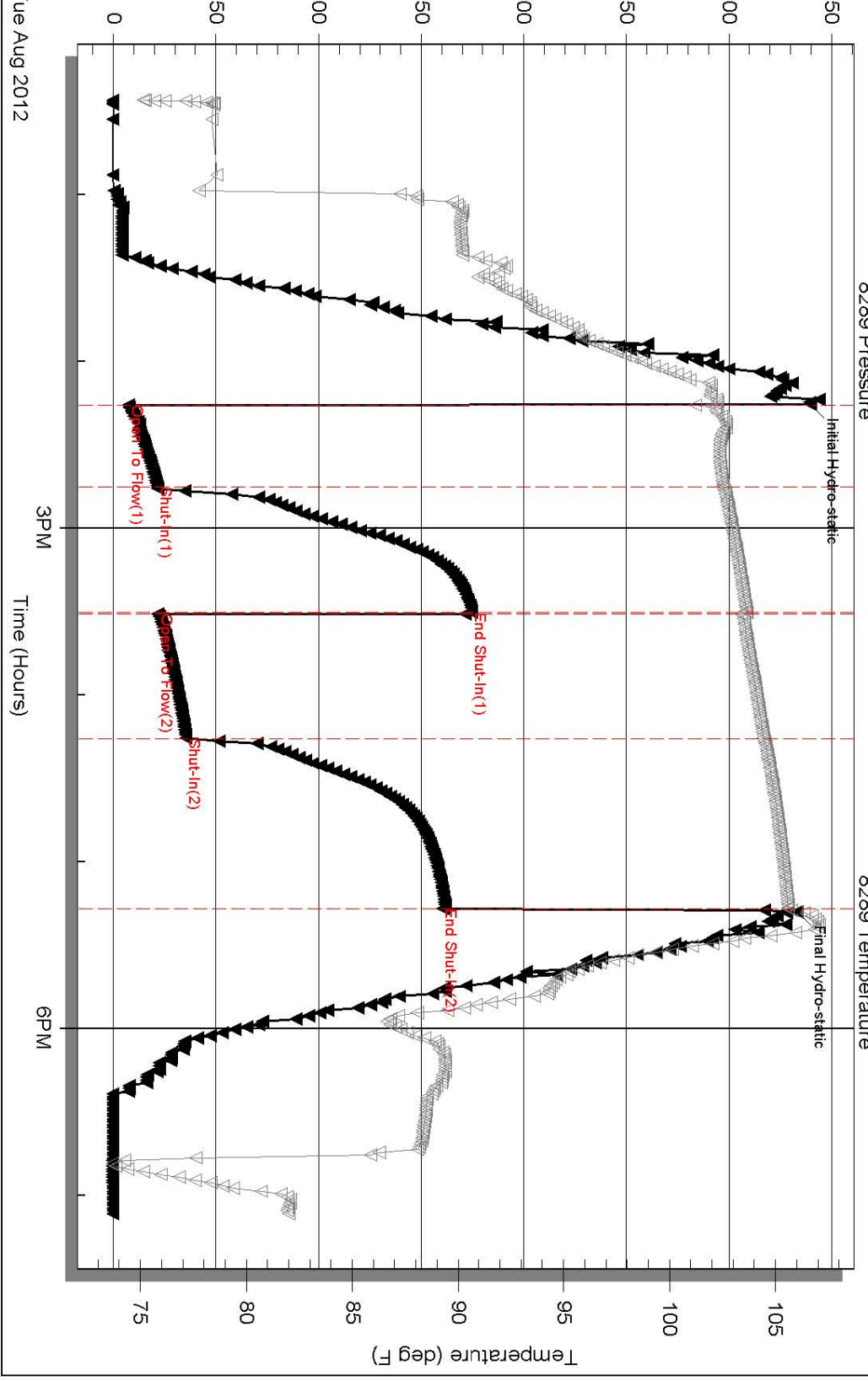
DST # 2 EXPANDED CHART

Trilobite



Serial:

Pressure vs. Time



ROCK TYPES

- Cht vari
- Lmst fw<7
- shale, gry
- Shcol
- Clystgy
- Lmst fw>7
- Carbon Sh
- Ss
- Dolprim
- shale, grn
- shale, red
- Lscongl

ACCESSORIES

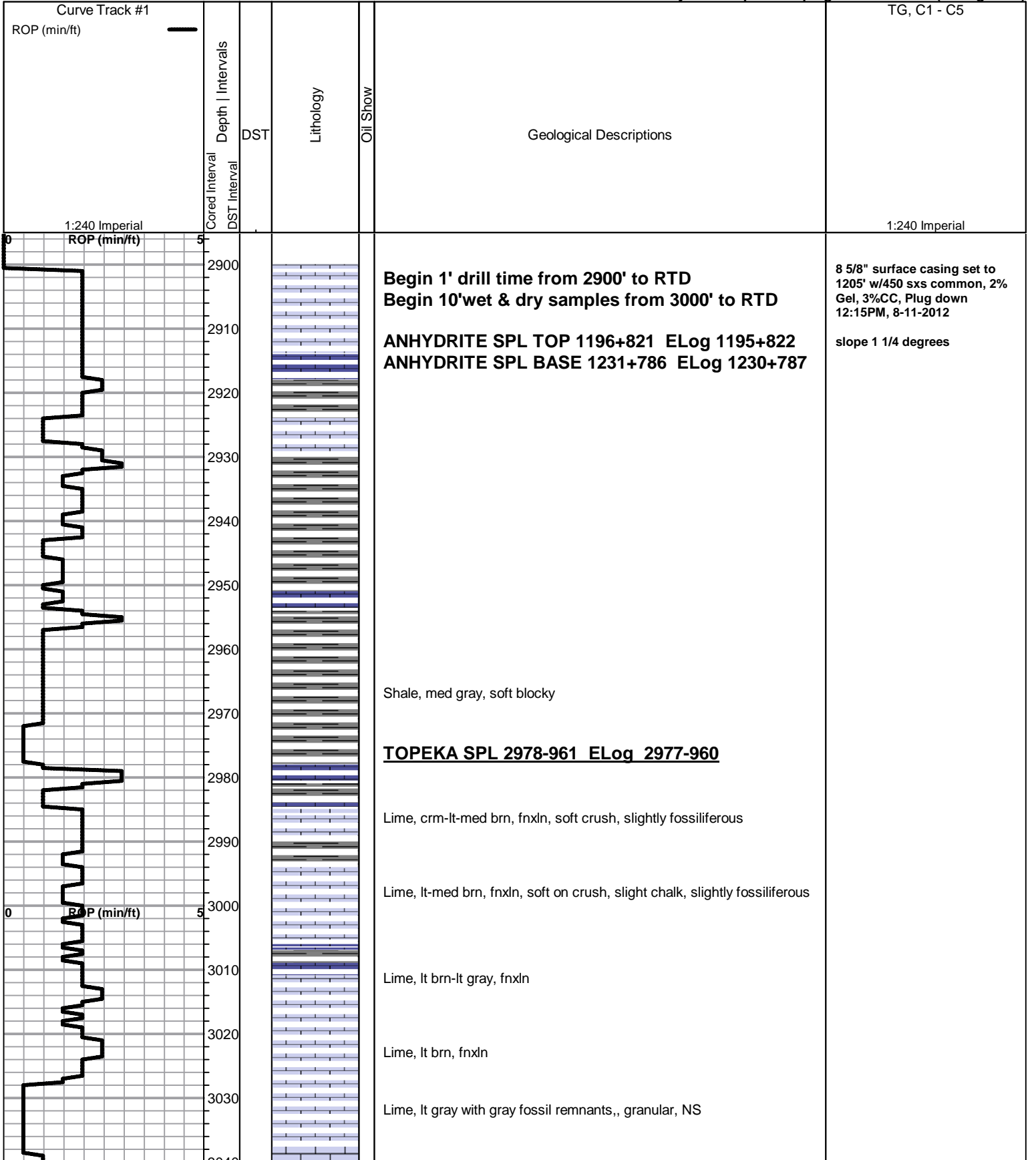
- MINERAL**
- FOSSIL**
- Calcareous
- Fossils < 20%
- Chert dark
- Oolite

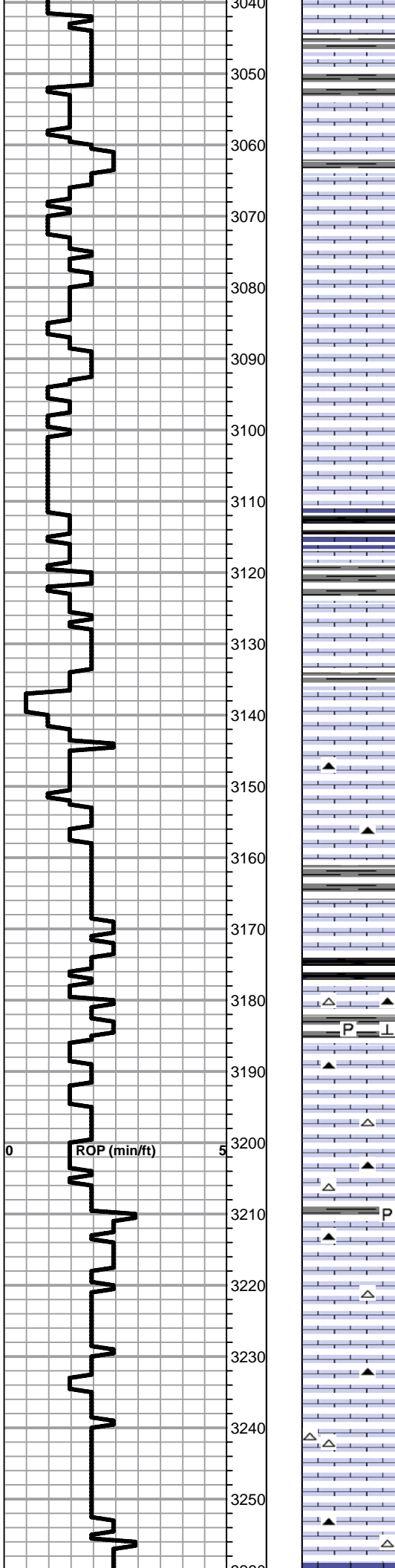
- ▲ Chert, dark
- ∩ Glauconite
- ≡ Nodules
- P Pyrite
- Sandy
- △ Chert White
- ◊ Oomoldic

OTHER SYMBOLS

- DST**
- DST Int
 - DST alt
 - Core

Printed by GEOstrip VC Striplog version 4.0.7.0 (www.grsi.ca)





Lime, lt-med brn, fnxln

Lime, med grn-grayish brn, fnxln-granular, gray fossil remnants

Lime, grayish brn-med brn, fnxln, slightly fossiliferous, fusulinids

Lime, lt brn-lt grayish brn, fnxln, slightly fossiliferous

Lime, lt-med brn, fnxln-granular, slightly chalky, slightly fossiliferous

Lime, med brn-med grayish brn, fnxln, slightly fossiliferous

Lime, med brn-med gray, fnxln-granular

Lime, med brn-grayish brn, fnxln-granular
Shale, gray to black carbonaceous, blocky

Lime, crm-lt brn, fnxln-granular, slightly fossiliferous

Lime, offwhite-crm, fnxln, very clean lime in appearance

Lime, crm-lt brn, fnxln-granular, bedded chalk in part NS

Lime, crm-lt brn, fnxln-granular in part, slight chalk in part
Chert, lt smoky gray, sharp, fresh

Lime, lt-med brn-grayish brn, fnxln, slight chalk

Lime, med brn, fnxln, fossiliferous in part

Shale, black carbonaceous, blocky

Lime, med brn-med gray, fnxln, slightly fossiliferous
Shale, gray, calcareous, pyrite clusters in part

Lime, lt brn-lt gray, fnxln-granular in part, slightly fossiliferous

Lime, lt-med brn with gray tint in part, fnxln-granular, crinoids

Lime, offwhite-lt brn, fnxln-granular in part,

Lime, crm-lt brn, fnxln

Lime, lt brn-lt gray, fnxln-granular

Lime, lt-med brn-grayish brn, fnxln

Lime, lt-med brn-gray, fnxln

HEEBNER SHALE SPL 3262-1245 ELog 3260-1243

Shale, black carbonaceous, fissile, blocky
Lime, lt-med brn, fn-vfxln

Shale, lime green forming soft mud-soft blocky

TORONTO SPL 3281-1264 ELog 3280-1263

Lime, white-crm, fn-vfxln, glassy in appearance NS

Lime, crm-lt brn, fn-vfxln, NS

Shale, reddish brn-gray, soft, blocky

LKC SPL 3307-1290 ELog 3305-1288

Lime, lt-med gray, scattered oolitic/fossil fragment with light scattered stain, NFO, very light to non detectable odor.

Lime, lt-med brn, fnxln
Shale, lt gray, soft

Lime, tan-lt brn, fnxln with few chips of oolitic/fossil fragment material with scattered staining with very light odor

Shale, med gray, soft, blocky

Lime, tan-lt brn, fnxln

Lime, crm-tan, fnxln

Shale, gray-black carbonaceous, blocky
Lime, lt gray, fnxln

Lime, crm-lt brn, fnxln with bedded chalk in part, NS

Lime, crm-lt brn, fnxln, few chips with scattered stain, No Odor

Lime, crm-lt brn, fnxln with bedded chalk in part
Chert, white, oolitic, sharp, fresh

Lime, crm, fnxln, fnxln with oolitic/oomoldic in part, chalky NS

Lime, crm-tan, fnxln, chalky in part

Lime, crm-tan, fnxln, chalky in part

Lime, med-dark brn, fnxln

Shale, gray-black, soft, blocky

Lime, tan-med brn, mostly fnxln with few chips with scattered staining and gilsonitic deposits, No Odor, NFO

Lime, crm-tan, fnxln, slight chalk

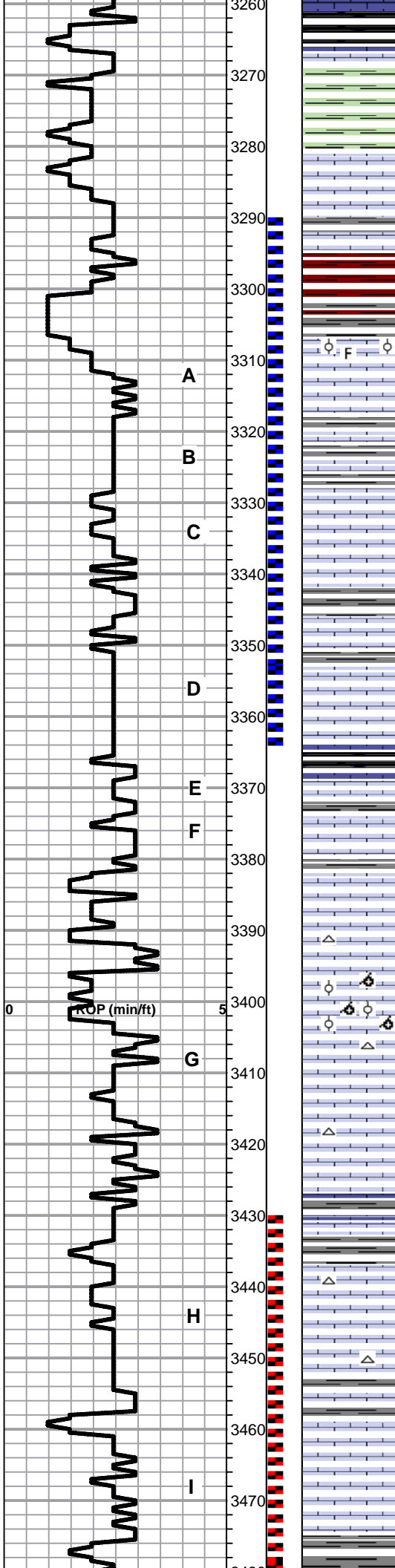
Lime, crm-tan, fnxln, slight chalk

Lime, crm-tan, fnxln with fine pinpoint porosity in part with speckled staining, NFO, very light odor

Lime, crm-tan, fnxln

DST # 1 3290' TO 3365'
SEE HEADER FOR TEST SUMMARY

DST # 2 3430' TO 3500'
SEE HEADER FOR TEST SUMMARY



A

B

C

D

E

F

G

H

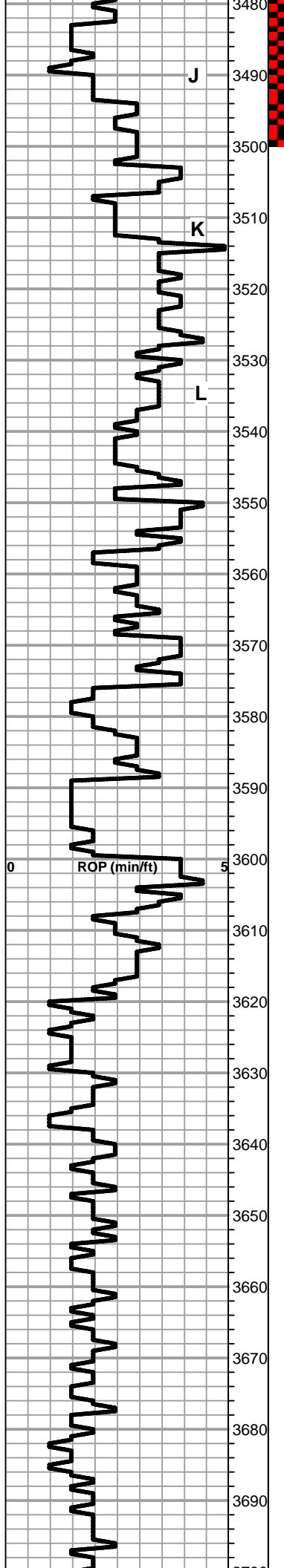
I

ROP (min/ft)

0

5

3260
3270
3280
3290
3300
3310
3320
3330
3340
3350
3360
3370
3380
3390
3400
3410
3420
3430
3440
3450
3460
3470



● Lime, crm-tan, fnxln with oolitic/oomoldic chips in part with fine honeycomb oomoldic with scattered-saturated staining, VMSFO on break with fair odor

Lime, crm-tan, fnxln

Shale, med gray, soft, blocky with pyrite clusters

Lime, crm-tan, fnxln

Lime, crm-lt brn, fn-cryptoxln

Lime, crm-lt brn, scattered bedded chalk, vfxln

Lime, offwhite-crm, fnxln, slight chalk in part

BKC SPL 3545-1528 ELog 3544-1527

Shale, reddish brn, soft, blocky, scattered chert

● P

Lime, tan-lt brn, fn-vfxln, dolomitic

Shale, vari colored

Lime, clastic mix with red staining

Shales, vari colored, soft, blocky

Z

Shale, reddish brn, soft, blocky with small chert nodules

Z

Shales, vari-colored-soft white, sticky clumps

D

Cherts, vari-colored, scattered gilsonitic deposits, NFO, No Odor

Shales, vari-colored, soft, blocky with vari-color cherts+pyrite

P

CONGLOMERATE SAND ELog 3621-1604

● Sandstone, mixed grain, poorly sorted, lt gassy SFO, thin zone

ARBUCKLE ELog 3629-1612

Dolomite, crm-ivory, fn-med xln, sucrosic in part, NS

Dolomite, crm-ivory, fn-med xln, granular w sucrosic in part, NS

△

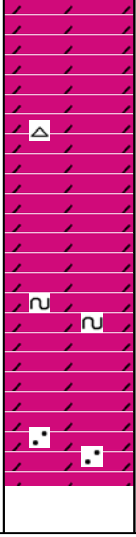
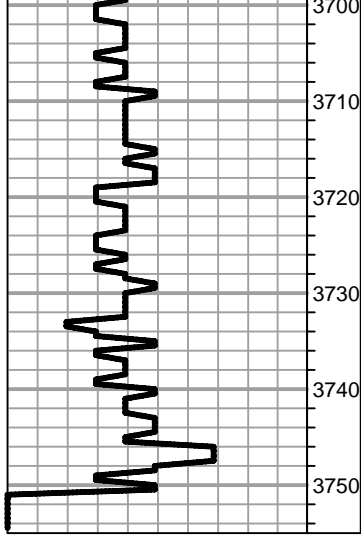
Dolomite, crm-ivory, fn-med xln, sucrosic

Dolomite, crm-ivory, fn-med xln, sucrosic

Dolomite, crm-ivory, fn-med xln, sucrosic with increasing good visible interxln porosity

△

Dolomite, crm-ivory, fn-cxln



Dolomite, crm-ivory, fn-cxln

Dolomite, crm-ivory, fn-cxln

Dolomite, crm-ivory, fn-cxln, scattered glauconite specks

Dolomite, crm-ivory fn-cxln, scattered, imbedded, quartz sand grains

RTD 3750-1733 LTD 3749-1732

QUALITY OILWELL CEMENTING, INC.

Federal Tax I.D.# 20-2886107

Phone 785-483-2025
Cell 785-324-1041

Home Office P.O. Box 32 Russell, KS 67665

No. 938

| | | | | | | | | | | | | | | | |
|-----------------------------------|-----------------------|------|------------|----------|----|--|--|--------|-------|-------|----|-------------|--|--------|----------|
| Date | 8-10-12 | Sec. | 13 | Twp. | 15 | Range | 19 | County | Ellis | State | Ks | On Location | | Finish | 12:15 PM |
| Lease | Irwin trust | | | Well No. | 2 | | Location Antonino Ks - 35, 1/2 E, N 10 Into | | | | | | | | |
| Contractor | Southwind #1 | | | | | | Owner | | | | | | | | |
| Type Job | Surface | | | | | | To Quality Oilwell Cementing, Inc. You are hereby requested to rent cementing equipment and furnish cementer and helper to assist owner or contractor to do work as listed. | | | | | | | | |
| Hole Size | 12 1/4" | | T.D. | 1206' | | Charge To TDI Inc. | | | | | | | | | |
| Csg. | 8 5/8" | | Depth | 1205' | | Street | | | | | | | | | |
| Tbg. Size | | | Depth | | | City | | | | | | | | | |
| Tool | | | Depth | | | State | | | | | | | | | |
| Cement Left in Csg. | 42' | | Shoe Joint | 42' | | The above was done to satisfaction and supervision of owner agent or contractor. | | | | | | | | | |
| Meas Line | | | Displace | 74 BLS | | Cement Amount Ordered 450 sx Common 3% Cl | | | | | | | | | |
| EQUIPMENT | | | | | | 2% Gel | | | | | | | | | |
| Pumptrk | 9 | No. | Cementer | Dave | | Common 450 | | | | | | | | | |
| | | | Helper | | | | | | | | | | | | |
| Bulktrk | 12 | No. | Driver | Lonnie | | Poz. Mix | | | | | | | | | |
| | | | Driver | | | | | | | | | | | | |
| Bulktrk | p.u. | No. | Driver | Rich | | Gel. 9 | | | | | | | | | |
| | | | Driver | | | | | | | | | | | | |
| JOB SERVICES & REMARKS | | | | | | Calcium 16 | | | | | | | | | |
| Remarks: | Cement did Circulate. | | | | | | Hulls | | | | | | | | |
| Rat Hole | | | | | | | Salt | | | | | | | | |
| Mouse Hole | | | | | | | Flowseal | | | | | | | | |
| Centralizers | | | | | | | Kol-Seal | | | | | | | | |
| Baskets | | | | | | | Mud CLR 48 | | | | | | | | |
| D/V or Port Collar | | | | | | | CFL-117 or CD110 CAF 38 | | | | | | | | |
| | | | | | | | Sand | | | | | | | | |
| | | | | | | | Handling 475 | | | | | | | | |
| | | | | | | | Mileage | | | | | | | | |
| FLOAT EQUIPMENT | | | | | | | | | | | | | | | |
| | | | | | | | Guide Shoe | | | | | | | | |
| | | | | | | | Centralizer 3 | | | | | | | | |
| | | | | | | | Baskets 3 | | | | | | | | |
| | | | | | | | AFU Inserts | | | | | | | | |
| | | | | | | | Float Shoe | | | | | | | | |
| | | | | | | | Latch Down | | | | | | | | |
| | | | | | | | 1 - Baffle plate | | | | | | | | |
| | | | | | | | 1 - Rubber plug | | | | | | | | |
| | | | | | | | Pumptrk Charge Long Surface | | | | | | | | |
| | | | | | | | Mileage 12 | | | | | | | | |
| | | | | | | | Tax | | | | | | | | |
| | | | | | | | Discount | | | | | | | | |
| | | | | | | | Total Charge | | | | | | | | |
| X Signature | [Signature] | | | | | | | | | | | | | | |

Conservation Division
Finney State Office Building
130 S. Market, Rm. 2078
Wichita, KS 67202-3802



Phone: 316-337-6200
Fax: 316-337-6211
<http://kcc.ks.gov/>

Mark Sievers, Chairman
Thomas E. Wright, Commissioner
Shari Feist Albrecht, Commissioner

Sam Brownback, Governor

October 11, 2012

Tom Denning
TDI, Inc.
1310 BISON RD
HAYS, KS 67601-9696

Re: ACO1
API 15-051-26311-00-00
Irvin Trust 2
SW/4 Sec.13-15S-19W
Ellis County, Kansas

Dear Production Department:

We are herewith requesting that the Well Completion Form ACO-1 and attached information for the subject well be held confidential for a period of two years.

Should you have any questions or need additional information regarding subject well, please contact our office.

Respectfully,
Tom Denning