



Confidentiality Requested:

Yes No

KANSAS CORPORATION COMMISSION 1099097
OIL & GAS CONSERVATION DIVISION

Form ACO-1

August 2013

Form must be Typed
Form must be Signed
All blanks must be Filled

WELL COMPLETION FORM
WELL HISTORY - DESCRIPTION OF WELL & LEASE

OPERATOR: License # _____

Name: _____

Address 1: _____

Address 2: _____

City: _____ State: _____ Zip: _____ + _____

Contact Person: _____

Phone: (_____) _____

CONTRACTOR: License # _____

Name: _____

Wellsite Geologist: _____

Purchaser: _____

Designate Type of Completion:

- New Well Re-Entry Workover
- Oil WSW SWD SIOW
- Gas D&A ENHR SIGW
- OG GSW Temp. Abd.
- CM (Coal Bed Methane)
- Cathodic Other (Core, Expl., etc.): _____

If Workover/Re-entry: Old Well Info as follows:

Operator: _____

Well Name: _____

Original Comp. Date: _____ Original Total Depth: _____

- Deepening Re-perf. Conv. to ENHR Conv. to SWD
- Plug Back Conv. to GSW Conv. to Producer
- Commingled Permit #: _____
- Dual Completion Permit #: _____
- SWD Permit #: _____
- ENHR Permit #: _____
- GSW Permit #: _____

Spud Date or Recompletion Date	Date Reached TD	Completion Date or Recompletion Date
-----------------------------------	-----------------	---

API No. 15 - _____

Spot Description: _____

_____ - _____ - _____ Sec. _____ Twp. _____ S. R. _____ East West

_____ Feet from North / South Line of Section

_____ Feet from East / West Line of Section

Footages Calculated from Nearest Outside Section Corner:

- NE NW SE SW

GPS Location: Lat: _____, Long: _____
(e.g. xx.xxxxx) (e.g. -xxx.xxxxx)

Datum: NAD27 NAD83 WGS84

County: _____

Lease Name: _____ Well #: _____

Field Name: _____

Producing Formation: _____

Elevation: Ground: _____ Kelly Bushing: _____

Total Vertical Depth: _____ Plug Back Total Depth: _____

Amount of Surface Pipe Set and Cemented at: _____ Feet

Multiple Stage Cementing Collar Used? Yes No

If yes, show depth set: _____ Feet

If Alternate II completion, cement circulated from: _____

feet depth to: _____ w/ _____ sx cmt.

Drilling Fluid Management Plan

(Data must be collected from the Reserve Pit)

Chloride content: _____ ppm Fluid volume: _____ bbls

Dewatering method used: _____

Location of fluid disposal if hauled offsite:

Operator Name: _____

Lease Name: _____ License #: _____

Quarter _____ Sec. _____ Twp. _____ S. R. _____ East West

County: _____ Permit #: _____

AFFIDAVIT

I am the affiant and I hereby certify that all requirements of the statutes, rules and regulations promulgated to regulate the oil and gas industry have been fully complied with and the statements herein are complete and correct to the best of my knowledge.

Submitted Electronically

KCC Office Use ONLY

- Confidentiality Requested
Date: _____
- Confidential Release Date: _____
- Wireline Log Received
- Geologist Report Received
- UIC Distribution
- ALT I II III Approved by: _____ Date: _____



1099097

Operator Name: _____ Lease Name: _____ Well #: _____

Sec. _____ Twp. _____ S. R. _____ East West County: _____

INSTRUCTIONS: Show important tops of formations penetrated. Detail all cores. Report all final copies of drill stems tests giving interval tested, time tool open and closed, flowing and shut-in pressures, whether shut-in pressure reached static level, hydrostatic pressures, bottom hole temperature, fluid recovery, and flow rates if gas to surface test, along with final chart(s). Attach extra sheet if more space is needed.

Final Radioactivity Log, Final Logs run to obtain Geophysical Data and Final Electric Logs must be emailed to kcc-well-logs@kcc.ks.gov. Digital electronic log files must be submitted in LAS version 2.0 or newer AND an image file (TIFF or PDF).

Drill Stem Tests Taken <input type="checkbox"/> Yes <input type="checkbox"/> No <i>(Attach Additional Sheets)</i> Samples Sent to Geological Survey <input type="checkbox"/> Yes <input type="checkbox"/> No Cores Taken <input type="checkbox"/> Yes <input type="checkbox"/> No Electric Log Run <input type="checkbox"/> Yes <input type="checkbox"/> No List All E. Logs Run: _____	<input type="checkbox"/> Log Formation (Top), Depth and Datum <input type="checkbox"/> Sample Name Top Datum
--	---

CASING RECORD <input type="checkbox"/> New <input type="checkbox"/> Used							
Report all strings set-conductor, surface, intermediate, production, etc.							
Purpose of String	Size Hole Drilled	Size Casing Set (In O.D.)	Weight Lbs. / Ft.	Setting Depth	Type of Cement	# Sacks Used	Type and Percent Additives

ADDITIONAL CEMENTING / SQUEEZE RECORD				
Purpose:	Depth Top Bottom	Type of Cement	# Sacks Used	Type and Percent Additives
<input type="checkbox"/> Perforate <input type="checkbox"/> Protect Casing <input type="checkbox"/> Plug Back TD <input type="checkbox"/> Plug Off Zone				

Did you perform a hydraulic fracturing treatment on this well? Yes No *(If No, skip questions 2 and 3)*

Does the volume of the total base fluid of the hydraulic fracturing treatment exceed 350,000 gallons? Yes No *(If No, skip question 3)*

Was the hydraulic fracturing treatment information submitted to the chemical disclosure registry? Yes No *(If No, fill out Page Three of the ACO-1)*

Shots Per Foot	PERFORATION RECORD - Bridge Plugs Set/Type Specify Footage of Each Interval Perforated	Acid, Fracture, Shot, Cement Squeeze Record <i>(Amount and Kind of Material Used)</i>	Depth

TUBING RECORD: Size: _____ Set At: _____ Packer At: _____ Liner Run: Yes No

Date of First, Resumed Production, SWD or ENHR: _____ Producing Method:
 Flowing Pumping Gas Lift Other *(Explain)* _____

Estimated Production Per 24 Hours	Oil Bbls.	Gas Mcf	Water Bbls.	Gas-Oil Ratio	Gravity

DISPOSITION OF GAS: <input type="checkbox"/> Vented <input type="checkbox"/> Sold <input type="checkbox"/> Used on Lease <i>(If vented, Submit ACO-18.)</i>	METHOD OF COMPLETION: <input type="checkbox"/> Open Hole <input type="checkbox"/> Perf. <input type="checkbox"/> Dually Comp. <input type="checkbox"/> Commingled <i>(Submit ACO-5)</i> <input type="checkbox"/> Other <i>(Specify)</i> _____ <i>(Submit ACO-4)</i>	PRODUCTION INTERVAL: _____ _____
--	---	---

Form	ACO1 - Well Completion
Operator	F. G. Holl Company L.L.C.
Well Name	DUNAVAN 1-14
Doc ID	1099097

All Electric Logs Run

CDL/CNL
DIL
BHCS
Microresistivity
facfinder

Form	ACO1 - Well Completion
Operator	F. G. Holl Company L.L.C.
Well Name	DUNAVAN 1-14
Doc ID	1099097

Tops

Name	Top	Datum
Herrington	1888	+102
Winfield	1937	+53
Towanda	2002	-12
Fort Riley	2045	-55
B/Florence	2150	-160
Kinney LS	2165	-175
Wrefold	2197	-207
Council Grove	2218	-228
Neva	2396	-406
Red Eagle	2454	-464
Wabaunsee	2622	-632
Stotler	2748	-758
Tarkio	2809	-819
Topeka	3024	-1034
Heebner	3283	-1293
Toronto	3299	-1309
Douglas Shale	3312	-1322
Brown Lime	3374	-1384
LKC	3389	-1399
BKC	3615	-1625
Conglomerate	3627	-1637
Arbuckle	3668	-1678
RTD	3850	-1860

Conservation Division
Finney State Office Building
130 S. Market, Rm. 2078
Wichita, KS 67202-3802



Phone: 316-337-6200
Fax: 316-337-6211
<http://kcc.ks.gov/>

Mark Sievers, Chairman
Thomas E. Wright, Commissioner
Shari Feist Albrecht, Commissioner

Sam Brownback, Governor

October 29, 2012

Loveness Mpanje
F. G. Holl Company L.L.C.
9431 E CENTRAL STE 100
WICHITA, KS 67206-2563

Re: ACO1
API 15-009-25714-00-00
DUNAVAN 1-14
NW/4 Sec.14-20S-15W
Barton County, Kansas

Dear Production Department:

We are herewith requesting that the Well Completion Form ACO-1 and attached information for the subject well be held confidential for a period of two years.

Should you have any questions or need additional information regarding subject well, please contact our office.

Respectfully,
Loveness Mpanje



DRILL STEM TEST REPORT

Prepared For: **F.G Holl Company**

9431 East Central Suite 100
Wichita Kansas 67206

ATTN: Frank Greenbaum

Dunavan 1-14

14-20s-15w-Barton

Start Date: 2012.07.12 @ 02:41:00

End Date: 2012.07.12 @ 00:00:00

Job Ticket #: 17302 DST #: 1

Superior Testers Enterprises LLC
PO Box 138 Great Bend KS 67530
1-800-792-6902

Printed: 2012.07.12 @ 18:36:31



DRILL STEM TEST REPORT

TOOL DIAGRAM

F.G Holl Company
 9431 East Central Suite 100
 Wichita Kansas 67206
 A T T N : Frank Greenbaum

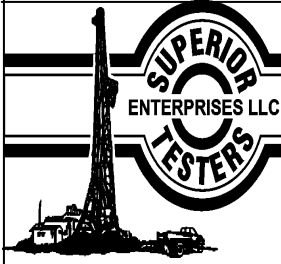
14-20s-15w-Barton
Dunavan 1-14
 Job Ticket: 17302 **DST#: 1**
 Test Start: 2012.07.12 @ 02:41:00

Tool Information

Drill Pipe:	Length: 3658.00 ft	Diameter: 3.80 inches	Volume: 51.31 bbl	Tool Weight: 2000.00 lb
Heavy Wt. Pipe:	Length: 0.00 ft	Diameter: 0.00 inches	Volume: 0.00 bbl	Weight set on Packer: 20000.00 lb
Drill Collar:	Length: 0.00 ft	Diameter: 0.00 inches	Volume: 0.00 bbl	Weight to Pull Loose: 60000.00 lb
			<u>Total Volume: 51.31 bbl</u>	Tool Chased 0.00 ft
Drill Pipe Above KB:	20.00 ft			String Weight: Initial 42000.00 lb
Depth to Top Packer:	3666.00 ft			Final 42000.00 lb
Depth to Bottom Packer:	ft			
Interval between Packers:	15.00 ft			
Tool Length:	43.00 ft			
Number of Packers:	2	Diameter: 6.75 inches		

Tool Comments:

Tool Description	Length (ft)	Serial No.	Position	Depth (ft)	Accum. Lengths
Shut-In Tool	5.00			3643.00	
Hydraulic Tool	5.00			3648.00	
Jars	6.00			3654.00	
Safety Joint	2.00			3656.00	
Packer	5.00			3661.00	28.00 Bottom Of Top Packer
Packer	5.00			3666.00	
Anchor	10.00			3676.00	
Recorder	1.00	8405	Inside	3677.00	
Recorder	1.00	8400	Outside	3678.00	
Bull Plug	3.00			3681.00	15.00 Bottom Packers & Anchor
Total Tool Length:	43.00				



DRILL STEM TEST REPORT

FLUID SUMMARY

F.G Holl Company
9431 East Central Suite 100
Wichita Kansas 67206
ATTN: Frank Greenbaum

14-20s-15w-Barton
Dunavan 1-14
Job Ticket: 17302 **DST#: 1**
Test Start: 2012.07.12 @ 02:41:00

Mud and Cushion Information

Mud Type: Gel Chem	Cushion Type:	Oil API:	deg API
Mud Weight: 9.00 lb/gal	Cushion Length: ft	Water Salinity:	ppm
Viscosity: 56.00 sec/qt	Cushion Volume: bbl		
Water Loss: 8.00 in ³	Gas Cushion Type:		
Resistivity: ohm.m	Gas Cushion Pressure: psia		
Salinity: 4300.00 ppm			
Filter Cake: 1.00 inches			

Recovery Information

Recovery Table

Length ft	Description	Volume bbl
190.00	Mud 100%	2.665

Total Length: 190.00 ft Total Volume: 2.665 bbl
Num Fluid Samples: 0 Num Gas Bombs: 0 Serial #:
Laboratory Name: Laboratory Location:
Recovery Comments:

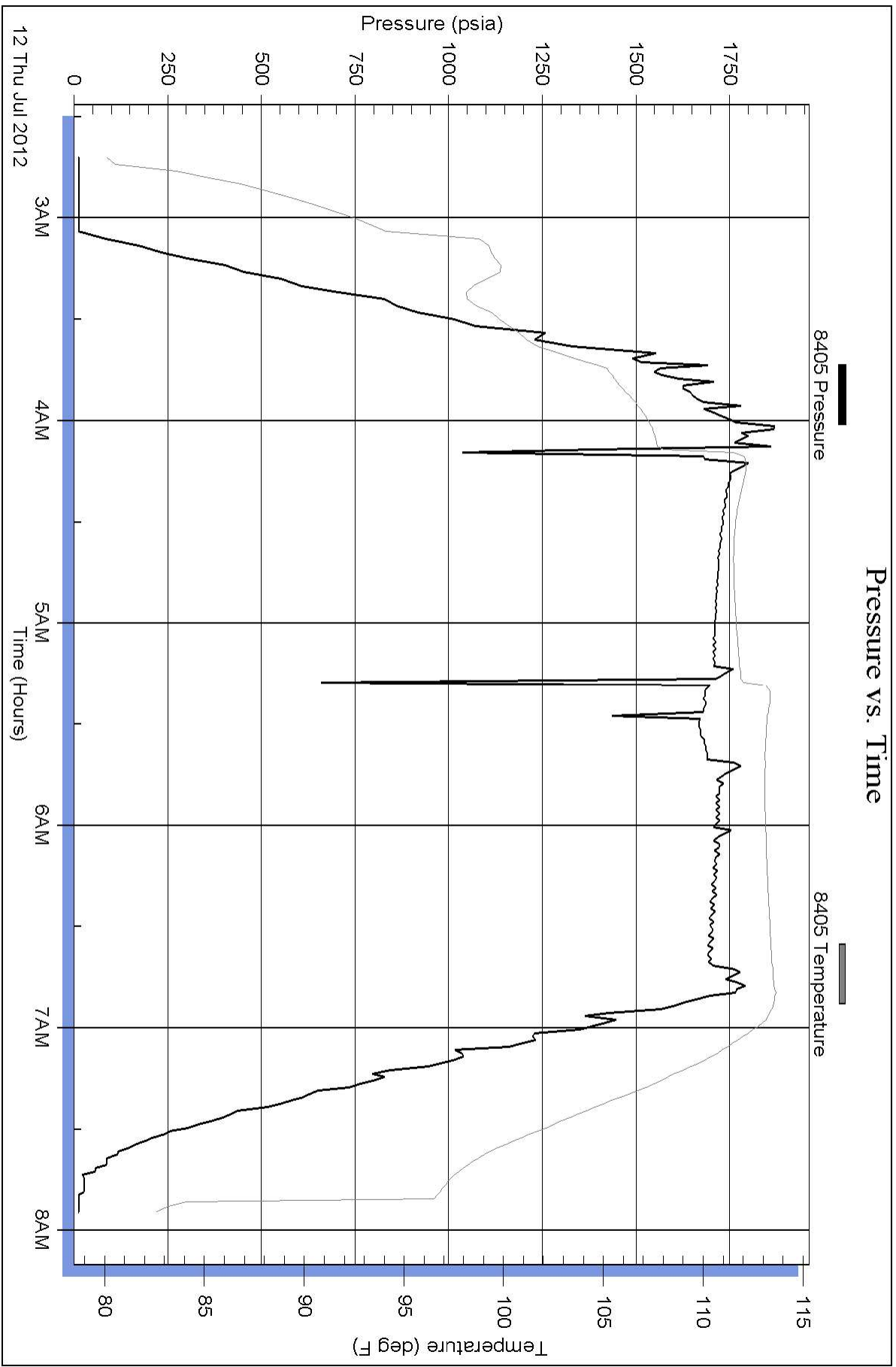
Serial #: 8405

Inside

F.G.Holl Company

Dunavan 1-14

DST Test Number: 1

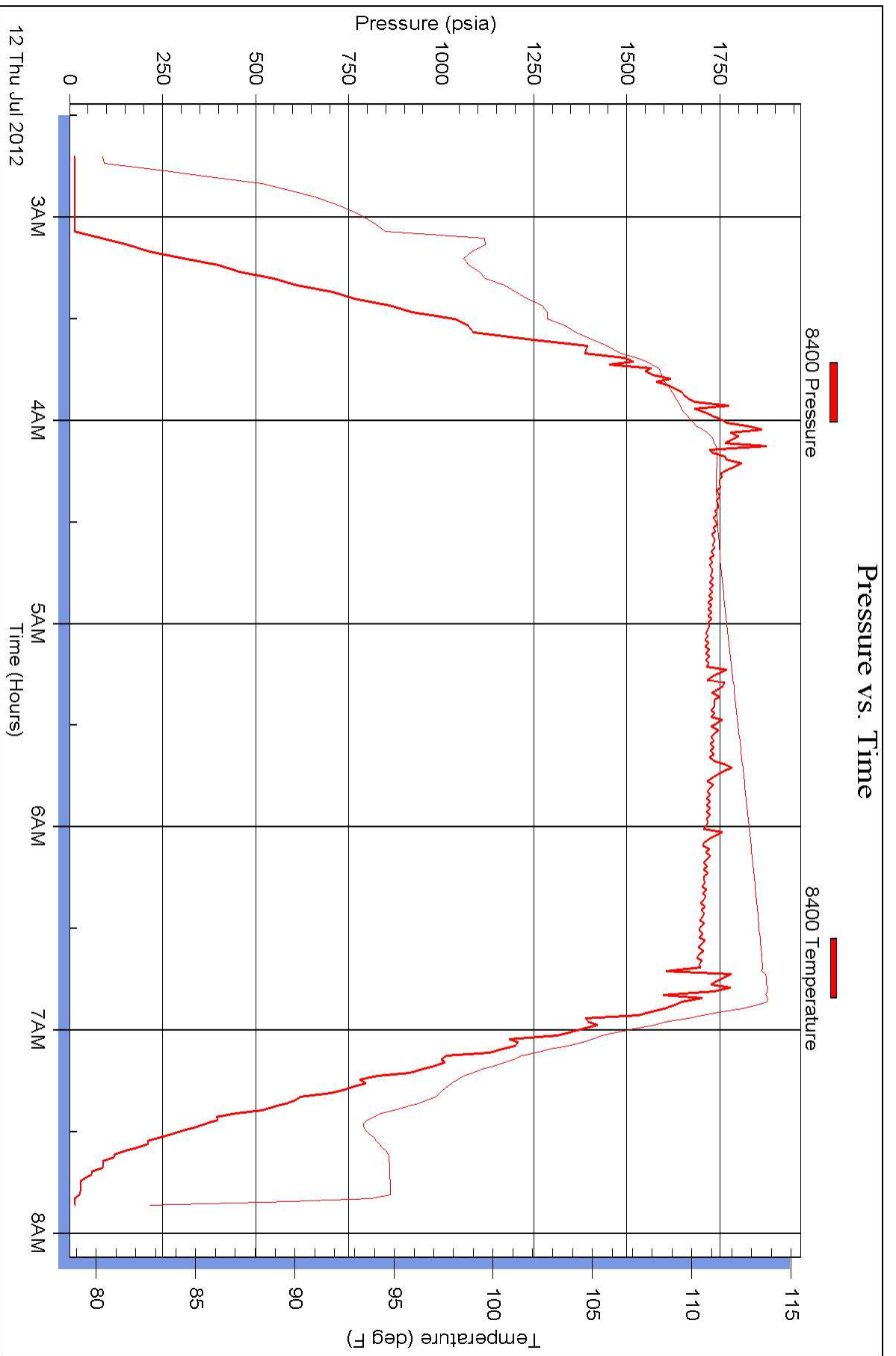


Serial #: 8400

Outside F.G.Holl Company

Dunavan 1-14

DST Test Number: 1



Superior Testers Enterprises LLC

Ref. No: 17302

Printed: 2012.07.12 @ 18:36:32



DRILL STEM TEST REPORT

Prepared For: **F.G Holl Company**

9431 East Central Suite 100
Wichita Kansas 67206

ATTN: Frank Greenbaum

Dunavan 1-14

14-20s-15w-Barton

Start Date: 2012.07.12 @ 08:17:00

End Date: 2012.07.12 @ 15:11:00

Job Ticket #: 17303 DST #: 2

Superior Testers Enterprises LLC
PO Box 138 Great Bend KS 67530
1-800-792-6902

Printed: 2012.07.13 @ 01:26:42



DRILL STEM TEST REPORT

F.G Holl Company
 9431 East Central Suite 100
 Wichita Kansas 67206
 ATTN: Frank Greenbaum

14-20s-15w-Barton
Dunavan 1-14
 Job Ticket: 17303 **DST#: 2**
 Test Start: 2012.07.12 @ 08:17:00

GENERAL INFORMATION:

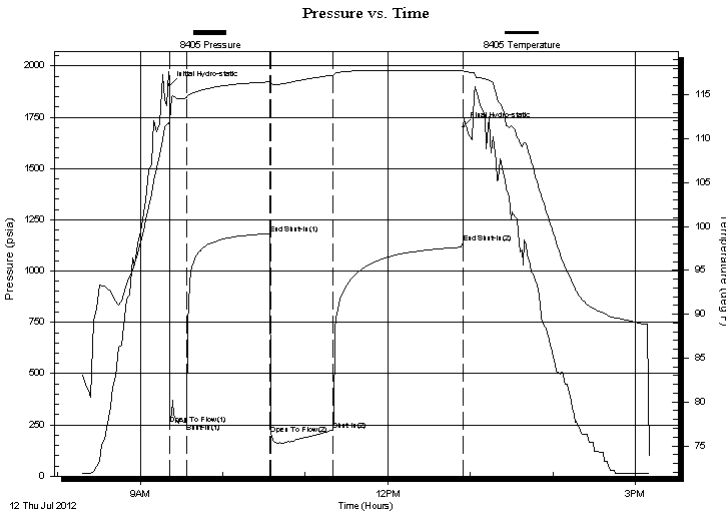
Formation: **Arbuckle**
 Deviated: No Whipstock: ft (KB)
 Test Type: Conventional Bottom Hole (Initial)
 Time Tool Opened: 09:21:30 Tester: Dustin Ellis
 Time Test Ended: 15:11:00 Unit No: 3315-Great Bend-30
 Interval: **3671.00 ft (KB) To 3681.00 ft (KB) (TVD)** Reference Elevations: 1990.00 ft (KB)
 Total Depth: 3681.00 ft (KB) (TVD) 1982.00 ft (CF)
 Hole Diameter: 7.88 inches Hole Condition: Fair KB to GR/CF: 8.00 ft

Serial #: 8405 Inside

Press @ RunDepth: 223.00 psia @ 3677.00 ft (KB) Capacity: 5000.00 psia
 Start Date: 2012.07.12 End Date: 2012.07.12 Last Calib.: 2012.07.13
 Start Time: 08:17:00 End Time: 15:11:00 Time On Btm: 2012.07.12 @ 09:21:00
 Time Off Btm: 2012.07.12 @ 12:55:00

TEST COMMENT: 1st Open 15 minutes Strong blow bottom bucket instantly
 1st Shut in 60 minutes Yes blow back
 2nd Open 45 minutes Strong blow bottom bucket instantly
 2nd Shut in 90 minutes Yes blow back

PRESSURE SUMMARY



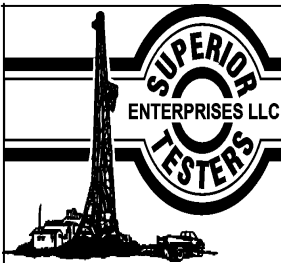
Time (Min.)	Pressure (psia)	Temp (deg F)	Annotation
0	1906.38	112.07	Initial Hydro-static
1	253.07	111.89	Open To Flow (1)
13	257.81	114.67	Shut-In(1)
74	1182.16	116.48	End Shut-In(1)
75	202.40	116.25	Open To Flow (2)
119	223.00	117.23	Shut-In(2)
214	1137.13	117.71	End Shut-In(2)
214	1701.54	117.77	Final Hydro-static

Recovery

Length (ft)	Description	Volume (bbl)
412.00	Water 100%	5.78
0.00	Chlorides 63,000 @ .5 ohms 68 degrees	0.00

Gas Rates

	Choke (inches)	Pressure (psia)	Gas Rate (Mcf/d)
First Gas Rate	1.00	0.60	17.25
Last Gas Rate	1.00	0.60	17.25
Max. Gas Rate	1.00	0.70	20.12



DRILL STEM TEST REPORT

F.G Holl Company
 9431 East Central Suite 100
 Wichita Kansas 67206
 ATTN: Frank Greenbaum

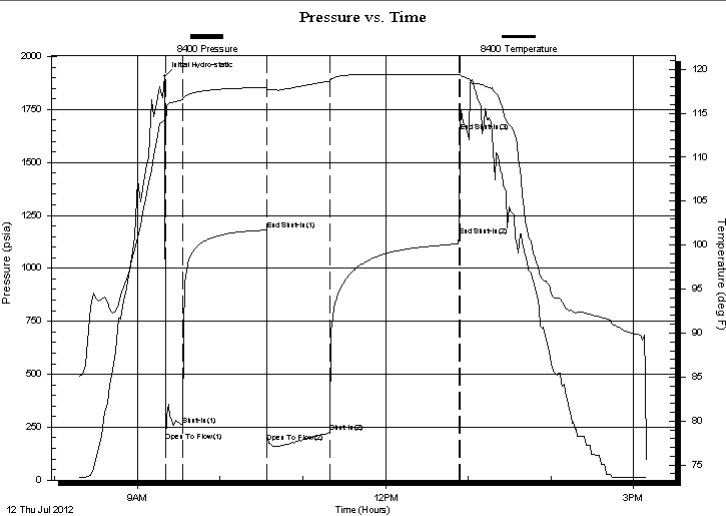
14-20s-15w-Barton
Dunavan 1-14
 Job Ticket: 17303 **DST#: 2**
 Test Start: 2012.07.12 @ 08:17:00

GENERAL INFORMATION:

Formation: **Arbuckle**
 Deviated: No Whipstock: ft (KB)
 Test Type: Conventional Bottom Hole (Initial)
 Time Tool Opened: 09:21:30 Tester: Dustin Ellis
 Time Test Ended: 15:11:00 Unit No: 3315-Great Bend-30
 Interval: **3671.00 ft (KB) To 3681.00 ft (KB) (TVD)** Reference Elevations: 1990.00 ft (KB)
 Total Depth: 3681.00 ft (KB) (TVD) 1982.00 ft (CF)
 Hole Diameter: 7.88 inches Hole Condition: Fair KB to GR/CF: 8.00 ft

Serial #: 8400 Outside
 Press @ RunDepth: 1645.37 psia @ 3678.00 ft (KB) Capacity: 5000.00 psia
 Start Date: 2012.07.12 End Date: 2012.07.12 Last Calib.: 2012.07.13
 Start Time: 08:17:00 End Time: 15:10:00 Time On Btm: 2012.07.12 @ 09:20:00
 Time Off Btm:

TEST COMMENT: 1st Open 15 minutes Strong blow bottom bucket instantly
 1st Shut in 60 minutes Yes blow back
 2nd Open 45 minutes Strong blow bottom bucket instantly
 2nd Shut in 90 minutes Yes blow back



PRESSURE SUMMARY

Time (Min.)	Pressure (psia)	Temp (deg F)	Annotation
0	1906.21	114.34	Initial Hydro-static
1	184.48	113.41	Open To Flow (1)
13	259.44	116.55	Shut-In(1)
74	1181.05	117.94	End Shut-In(1)
74	179.91	117.54	Open To Flow (2)
120	224.41	118.64	Shut-In(2)
214	1155.43	119.36	End Shut-In(2)
214	1645.37	119.41	End Shut-In(3)

Recovery

Length (ft)	Description	Volume (bbl)
412.00	Water 100%	5.78
0.00	Chlorides 63,000 @.5 ohms 68 degrees	0.00

Gas Rates

	Choke (inches)	Pressure (psia)	Gas Rate (Mcf/d)
First Gas Rate	1.00	0.60	17.25
Last Gas Rate	1.00	0.60	17.25
Max. Gas Rate	1.00	0.70	20.12



DRILL STEM TEST REPORT

TOOL DIAGRAM

F.G Holl Company

14-20s-15w-Barton

9431 East Central Suite 100
Wichita Kansas 67206

Dunavan 1-14

Job Ticket: 17303

DST#: 2

ATTN: Frank Greenbaum

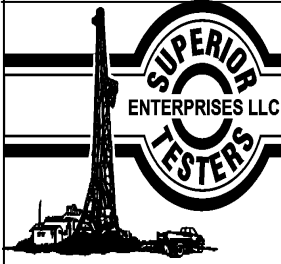
Test Start: 2012.07.12 @ 08:17:00

Tool Information

Drill Pipe:	Length: 3669.00 ft	Diameter: 3.80 inches	Volume: 51.47 bbl	Tool Weight: 2000.00 lb
Heavy Wt. Pipe:	Length: 0.00 ft	Diameter: 0.00 inches	Volume: 0.00 bbl	Weight set on Packer: 20000.00 lb
Drill Collar:	Length: 0.00 ft	Diameter: 0.00 inches	Volume: 0.00 bbl	Weight to Pull Loose: 53000.00 lb
			<u>Total Volume: 51.47 bbl</u>	Tool Chased 0.00 ft
Drill Pipe Above KB:	26.00 ft			String Weight: Initial 42000.00 lb
Depth to Top Packer:	3671.00 ft			Final 44000.00 lb
Depth to Bottom Packer:	ft			
Interval between Packers:	10.00 ft			
Tool Length:	38.00 ft			
Number of Packers:	2	Diameter: 6.75 inches		

Tool Comments:

Tool Description	Length (ft)	Serial No.	Position	Depth (ft)	Accum. Lengths
Shut-In Tool	5.00			3648.00	
Hydraulic Tool	5.00			3653.00	
Jars	6.00			3659.00	
Safety Joint	2.00			3661.00	
Packer	5.00			3666.00	28.00 Bottom Of Top Packer
Packer	5.00			3671.00	
Anchor	5.00			3676.00	
Recorder	1.00	8405	Inside	3677.00	
Recorder	1.00	8400	Outside	3678.00	
Bull Plug	3.00			3681.00	10.00 Bottom Packers & Anchor
Total Tool Length:	38.00				



DRILL STEM TEST REPORT

FLUID SUMMARY

F.G Holl Company

14-20s-15w-Barton

9431 East Central Suite 100
Wichita Kansas 67206

Dunavan 1-14

Job Ticket: 17303

DST#: 2

ATTN: Frank Greenbaum

Test Start: 2012.07.12 @ 08:17:00

Mud and Cushion Information

Mud Type: Gel Chem

Cushion Type:

Oil API:

deg API

Mud Weight: 9.00 lb/gal

Cushion Length:

ft

Water Salinity:

ppm

Viscosity: 56.00 sec/qt

Cushion Volume:

bbbl

Water Loss: 8.00 in³

Gas Cushion Type:

Resistivity: 0.50 ohm.m

Gas Cushion Pressure:

psia

Salinity: 4300.00 ppm

Filter Cake: 1.00 inches

Recovery Information

Recovery Table

Length ft	Description	Volume bbl
412.00	Water 100%	5.779
0.00	Chlorides 63,000 @.5 ohms 68 degrees	0.000

Total Length: 412.00 ft Total Volume: 5.779 bbl

Num Fluid Samples: 0

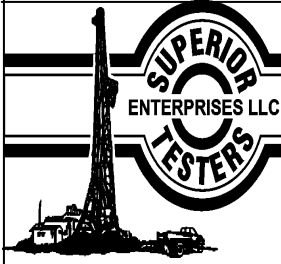
Num Gas Bombs: 0

Serial #:

Laboratory Name:

Laboratory Location:

Recovery Comments:



DRILL STEM TEST REPORT

GAS RATES

F.G Holl Company

14-20s-15w-Barton

9431 East Central Suite 100
Wichita Kansas 67206

Dunavan 1-14

Job Ticket: 17303

DST#: 2

ATTN: Frank Greenbaum

Test Start: 2012.07.12 @ 08:17:00

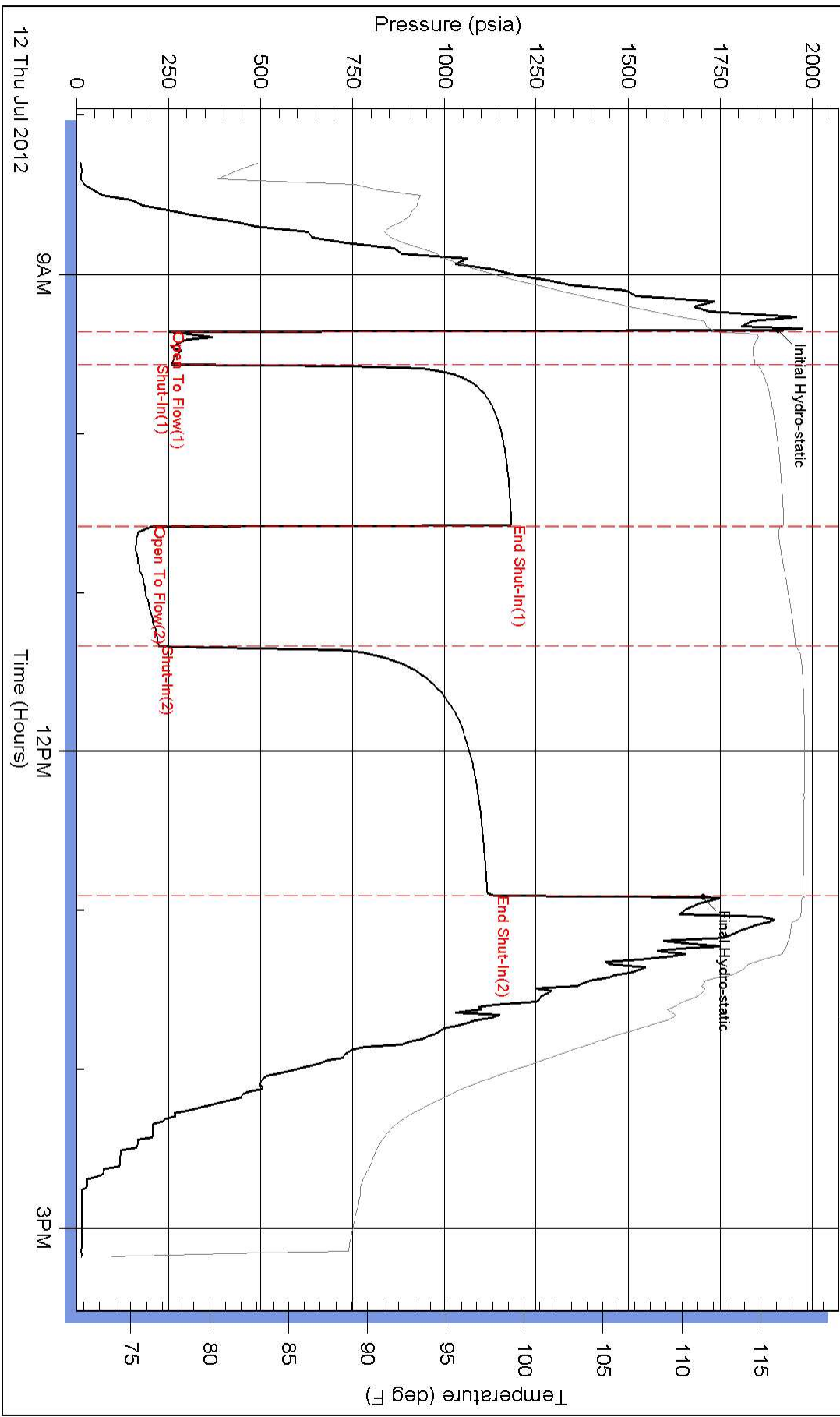
Gas Rates Information

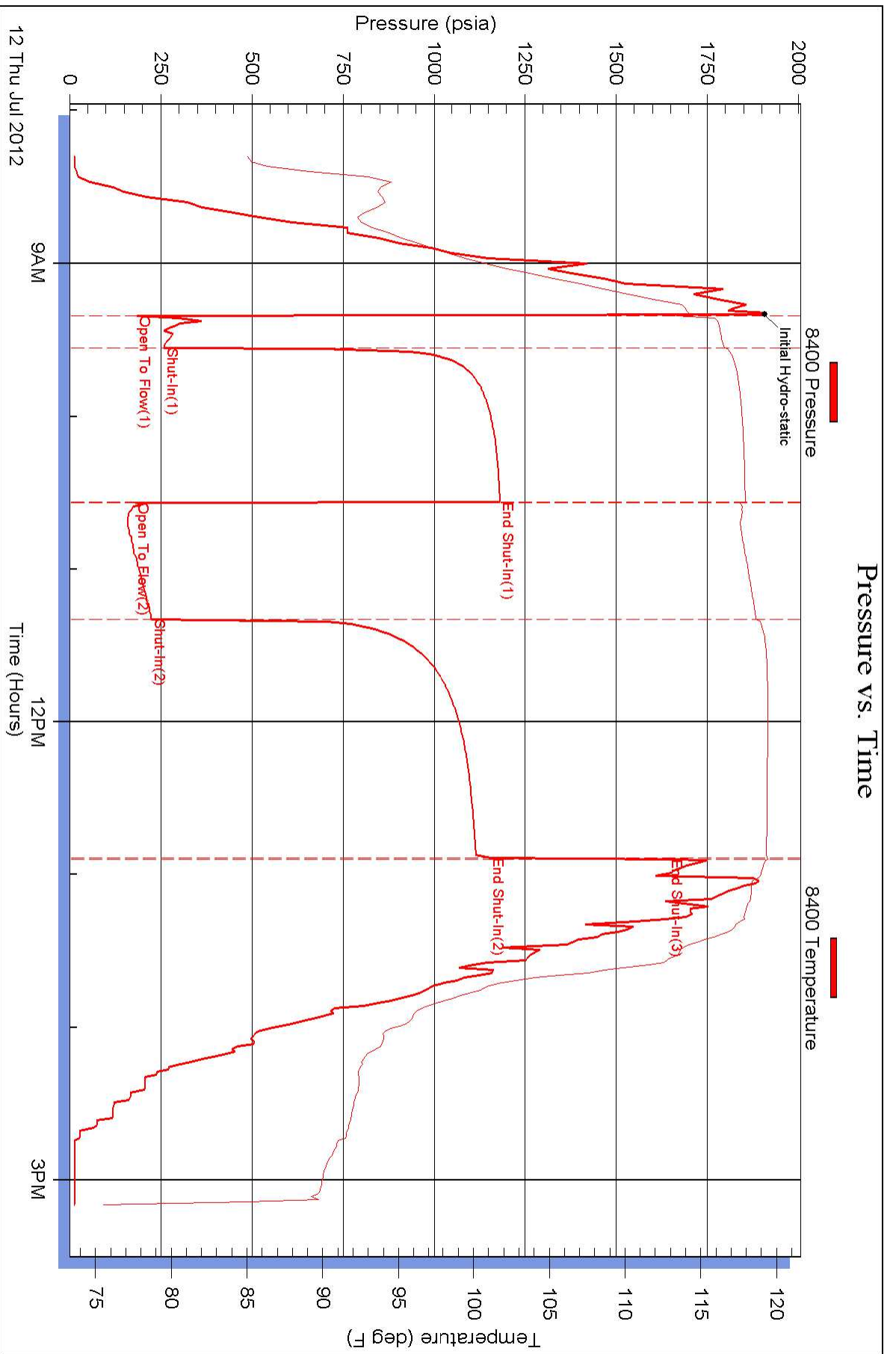
Temperature: 59 (deg F)
Relative Density: 0.65
Z Factor: 0.8

Gas Rates Table

Flow Period	Elapsed Time	Choke (inches)	Pressure (psia)	Gas Rate (Mcf/d)
1	10	1.00	0.60	17.25
1	10	1.00	0.60	17.25
2	20	1.00	0.70	20.12
3	30	1.00	0.60	17.25

Pressure vs. Time







DRILL STEM TEST REPORT

Prepared For: **F.G Holl Company**

9431 East Central Suite 100
Wichita Kansas 67206

ATTN: Frank Greenbaum

Dunavan 1-14

14-20s-15w-Barton

Start Date: 2012.07.13 @ 01:30:00

End Date: 2012.07.13 @ 07:55:00

Job Ticket #: 17304 DST #: 3

Superior Testers Enterprises LLC
PO Box 138 Great Bend KS 67530
1-800-792-6902

Printed: 2012.07.13 @ 18:13:19



DRILL STEM TEST REPORT

F.G Holl Company
 9431 East Central Suite 100
 Wichita Kansas 67206
 ATTN: Frank Greenbaum

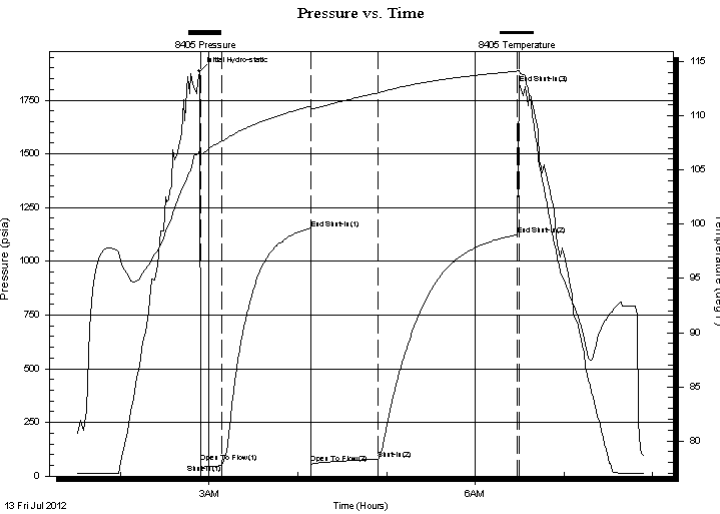
14-20s-15w-Barton
Dunavan 1-14
 Job Ticket: 17304 **DST#: 3**
 Test Start: 2012.07.13 @ 01:30:00

GENERAL INFORMATION:

Formation: **Arbuckle**
 Deviated: No Whipstock: ft (KB)
 Test Type: Conventional Bottom Hole (Initial)
 Time Tool Opened: 02:54:00 Tester: Dustin Ellis
 Time Test Ended: 07:55:00 Unit No: 3315-Great Bend-30
 Interval: **3710.00 ft (KB) To 3725.00 ft (KB) (TVD)** Reference Elevations: 1990.00 ft (KB)
 Total Depth: 3725.00 ft (KB) (TVD) 1982.00 ft (CF)
 Hole Diameter: 7.88 inches Hole Condition: Fair KB to GR/CF: 8.00 ft

Serial #: 8405 Inside
 Press @ RunDepth: 78.94 psia @ 3721.00 ft (KB) Capacity: 5000.00 psia
 Start Date: 2012.07.13 End Date: 2012.07.13 Last Calib.: 2012.07.13
 Start Time: 01:30:00 End Time: 07:55:00 Time On Btm: 2012.07.13 @ 02:53:30
 Time Off Btm:

TEST COMMENT: 1st Open 15 minutes Fair building blow blew bottom bucket 10 minutes
 1st Shut in 60 minutes No blow back
 2nd Open 45 minutes Fair building blow blew bottom bucket 21 minutes
 2nd Shut in 90 minutes No blow back



PRESSURE SUMMARY

Time (Min.)	Pressure (psia)	Temp (deg F)	Annotation
0	1884.74	106.80	Initial Hydro-static
1	65.73	106.25	Open To Flow (1)
15	53.55	107.67	Shut-In(1)
75	1153.18	110.87	End Shut-In(1)
76	58.62	110.66	Open To Flow (2)
121	78.94	112.11	Shut-In(2)
215	1124.29	114.12	End Shut-In(2)
216	1826.88	114.19	End Shut-In(3)

Recovery

Length (ft)	Description	Volume (bbl)
11.00	Oil cut mud 10%Oil 90%Mud	0.15
61.00	Oil pluse w ater cut mud	0.86
0.00	Oil 10% 60%Mud 30%Water	0.00

Gas Rates

	Choke (inches)	Pressure (psia)	Gas Rate (Mcf/d)



DRILL STEM TEST REPORT

TOOL DIAGRAM

F.G Holl Company
 9431 East Central Suite 100
 Wichita Kansas 67206
 ATTN: Frank Greenbaum

14-20s-15w-Barton
Dunavan 1-14
 Job Ticket: 17304 **DST#: 3**
 Test Start: 2012.07.13 @ 01:30:00

Tool Information

Drill Pipe:	Length: 3703.00 ft	Diameter: 3.80 inches	Volume: 51.94 bbl	Tool Weight: 2000.00 lb
Heavy Wt. Pipe:	Length: 0.00 ft	Diameter: 0.00 inches	Volume: 0.00 bbl	Weight set on Packer: 20000.00 lb
Drill Collar:	Length: 0.00 ft	Diameter: 0.00 inches	Volume: 0.00 bbl	Weight to Pull Loose: 55000.00 lb
			<u>Total Volume: 51.94 bbl</u>	Tool Chased 0.00 ft
Drill Pipe Above KB:	21.00 ft			String Weight: Initial 45000.00 lb
Depth to Top Packer:	3710.00 ft			Final 46000.00 lb
Depth to Bottom Packer:	ft			
Interval between Packers:	15.00 ft			
Tool Length:	43.00 ft			
Number of Packers:	2	Diameter: 6.75 inches		

Tool Comments:

Tool Description	Length (ft)	Serial No.	Position	Depth (ft)	Accum. Lengths
Shut-In Tool	5.00			3687.00	
Hydraulic Tool	5.00			3692.00	
Jars	6.00			3698.00	
Safety Joint	2.00			3700.00	
Packer	5.00			3705.00	28.00 Bottom Of Top Packer
Packer	5.00			3710.00	
Anchor	10.00			3720.00	
Recorder	1.00	8405	Inside	3721.00	
Recorder	1.00	8400	Outside	3722.00	
Bull Plug	3.00			3725.00	15.00 Bottom Packers & Anchor
Total Tool Length:	43.00				



DRILL STEM TEST REPORT

FLUID SUMMARY

F.G Holl Company
 9431 East Central Suite 100
 Wichita Kansas 67206
 ATTN: Frank Greenbaum

14-20s-15w-Barton
Dunavan 1-14
 Job Ticket: 17304 **DST#: 3**
 Test Start: 2012.07.13 @ 01:30:00

Mud and Cushion Information

Mud Type: Gel Chem	Cushion Type:	Oil API:	deg API
Mud Weight: 9.00 lb/gal	Cushion Length: ft	Water Salinity:	ppm
Viscosity: 62.00 sec/qt	Cushion Volume: bbl		
Water Loss: 8.39 in ³	Gas Cushion Type:		
Resistivity: ohm.m	Gas Cushion Pressure: psia		
Salinity: 6700.00 ppm			
Filter Cake: 1.00 inches			

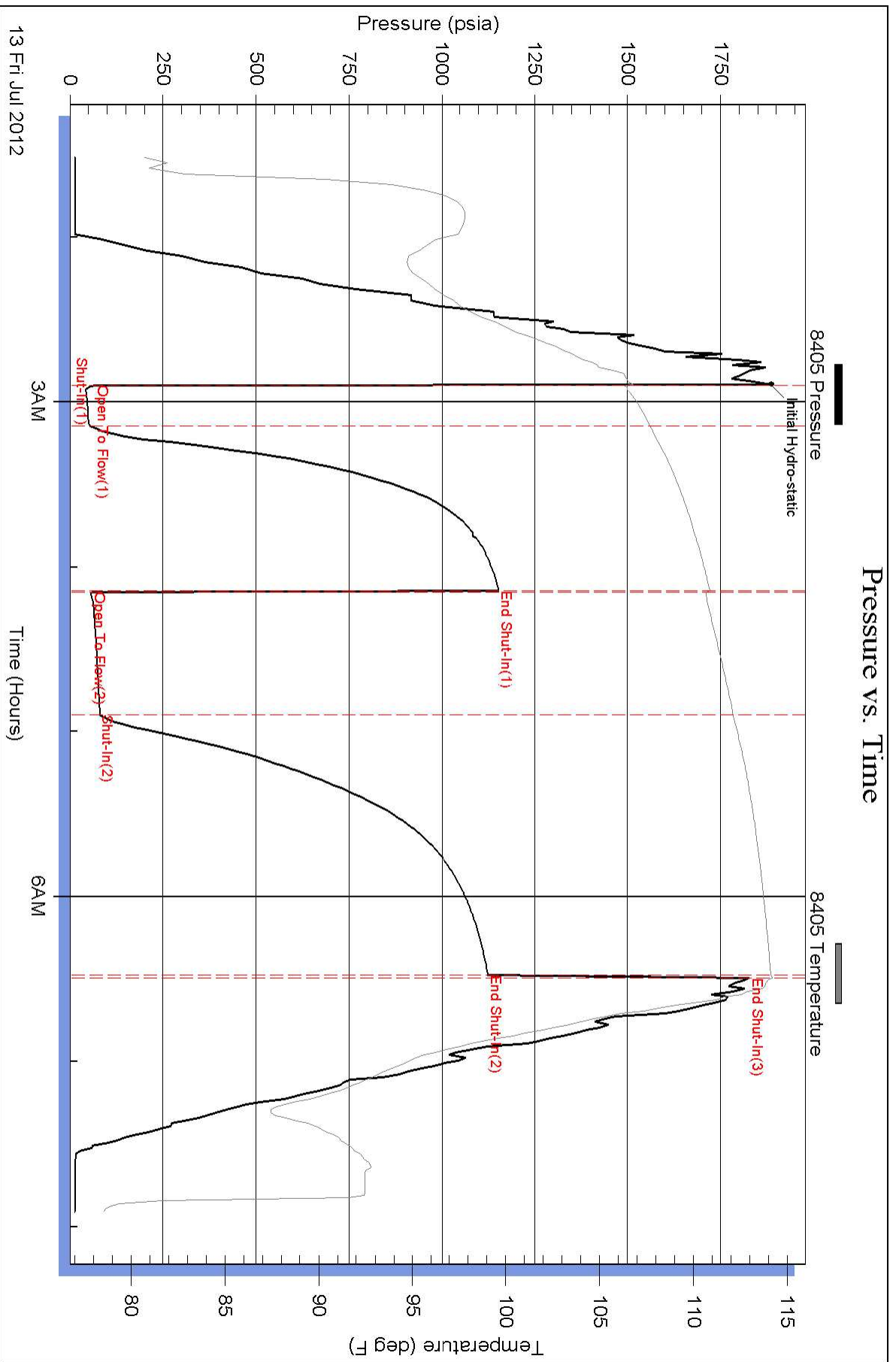
Recovery Information

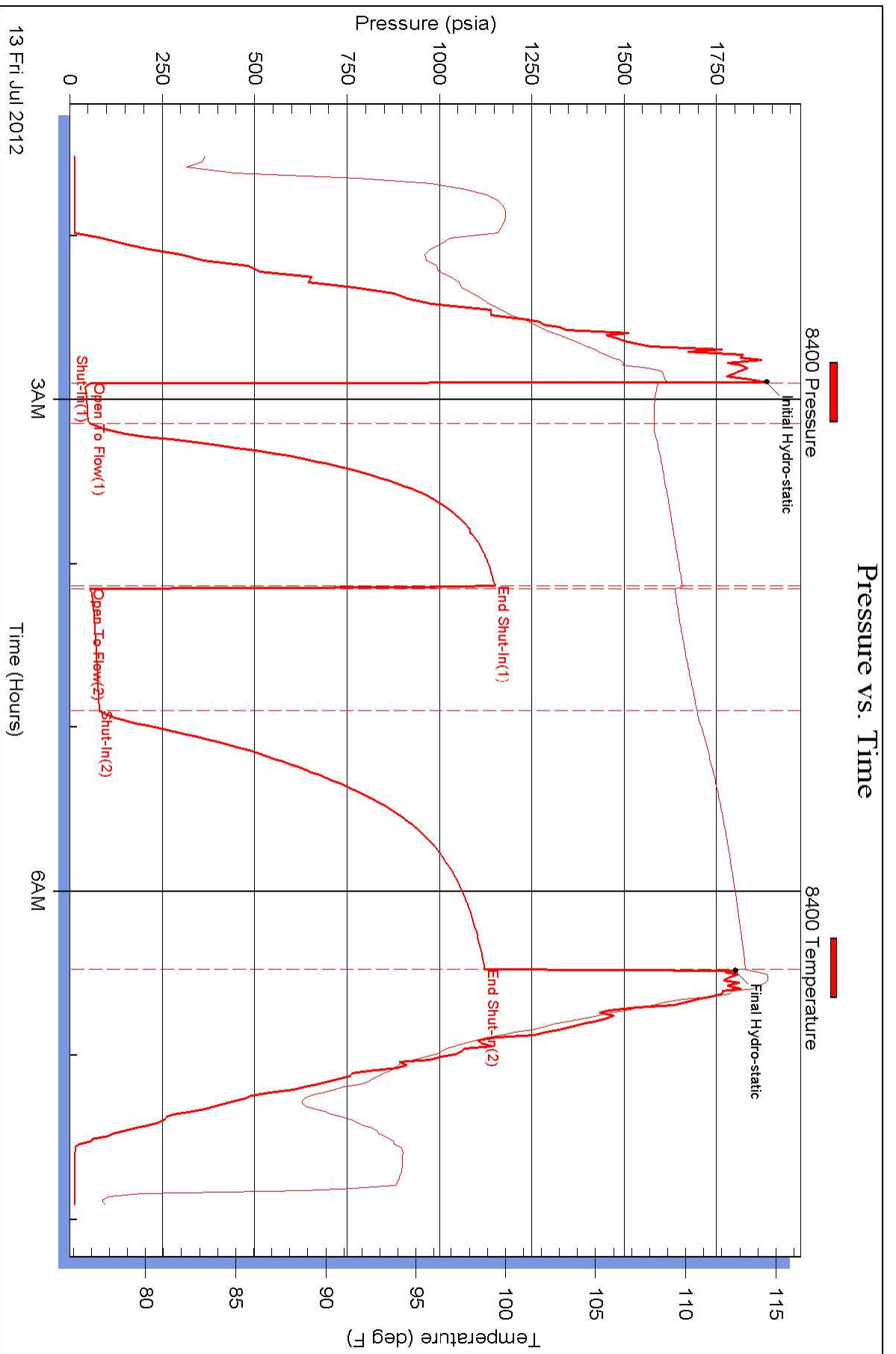
Recovery Table

Length ft	Description	Volume bbl
11.00	Oil cut mud 10%Oil 90%Mud	0.154
61.00	Oil pluse w ater cut mud	0.856
0.00	Oil 10% 60%Mud 30%Water	0.000

Total Length: 72.00 ft Total Volume: 1.010 bbl
 Num Fluid Samples: 0 Num Gas Bombs: 0 Serial #:
 Laboratory Name: Laboratory Location:
 Recovery Comments:

Pressure vs. Time







DRILL STEM TEST REPORT

Prepared For: **F.G Holl Company**

9431 East Central Suite 100
Wichita Kansas 67206

ATTN: Frank Greenbaum

Dunavan 1-14

14-20s-15w-Barton

Start Date: 2012.07.14 @ 03:11:00

End Date: 2012.07.14 @ 09:53:00

Job Ticket #: 17305 DST #: 4

Superior Testers Enterprises LLC
PO Box 138 Great Bend KS 67530
1-800-792-6902

Printed: 2012.07.14 @ 08:15:40



DRILL STEM TEST REPORT

F.G Holl Company
 9431 East Central Suite 100
 Wichita Kansas 67206
 ATTN: Frank Greenbaum

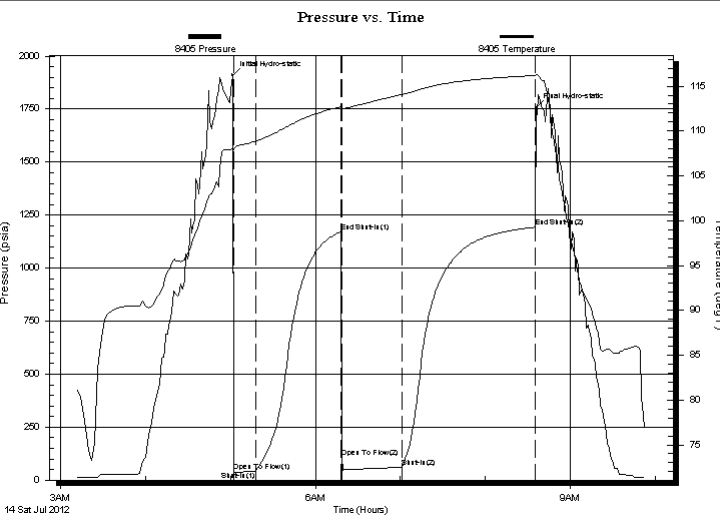
14-20s-15w-Barton
Dunavan 1-14
 Job Ticket: 17305 **DST#: 4**
 Test Start: 2012.07.14 @ 03:11:00

GENERAL INFORMATION:

Formation: **Arbuckle**
 Deviated: No Whipstock: ft (KB)
 Time Tool Opened: 05:02:00
 Time Test Ended: 09:53:00
 Test Type: Conventional Bottom Hole (Initial)
 Tester: Dustin Ellis
 Unit No: 3315-Great Bend-30
 Interval: **3726.00 ft (KB) To 3738.00 ft (KB) (TVD)**
 Total Depth: 3738.00 ft (KB) (TVD)
 Reference Elevations: 1990.00 ft (KB)
 1982.00 ft (CF)
 Hole Diameter: 7.88 inches Hole Condition: Fair
 KB to GR/CF: 8.00 ft

Serial #: 8405 Inside
 Press @ Run Depth: 60.40 psia @ 3734.00 ft (KB) Capacity: 5000.00 psia
 Start Date: 2012.07.14 End Date: 2012.07.14 Last Calib.: 2012.07.14
 Start Time: 03:11:00 End Time: 09:53:00 Time On Btm: 2012.07.14 @ 05:01:30
 Time Off Btm: 2012.07.14 @ 08:36:00

TEST COMMENT: 1st Open 15 minutes Fair building blow built to bottom bucket 8 minutes
 1st Shut in 60 minutes No blow back
 2nd Open 45 minutes Fair building blow blew bottom bucket 2 minutes
 2nd Shut in 90 minutes No blow back



PRESSURE SUMMARY			
Time (Min.)	Pressure (psia)	Temp (deg F)	Annotation
0	1909.89	108.10	Initial Hydro-static
1	43.54	107.88	Open To Flow (1)
16	42.73	108.86	Shut-In(1)
77	1171.14	112.73	End Shut-In(1)
77	110.27	112.38	Open To Flow (2)
120	60.40	114.07	Shut-In(2)
214	1192.94	116.20	End Shut-In(2)
215	1755.99	116.32	Final Hydro-static

Recovery		
Length (ft)	Description	Volume (bbl)
8.00	Oil cut mud 10% oil 90% mud	0.11
60.00	Oil cut mud 10%oil 90%mud	0.84
0.00		0.00

Gas Rates			
	Choke (inches)	Pressure (psia)	Gas Rate (Mcf/d)



DRILL STEM TEST REPORT

F.G Holl Company
 9431 East Central Suite 100
 Wichita Kansas 67206
 ATTN: Frank Greenbaum

14-20s-15w-Barton
Dunavan 1-14
 Job Ticket: 17305 **DST#: 4**
 Test Start: 2012.07.14 @ 03:11:00

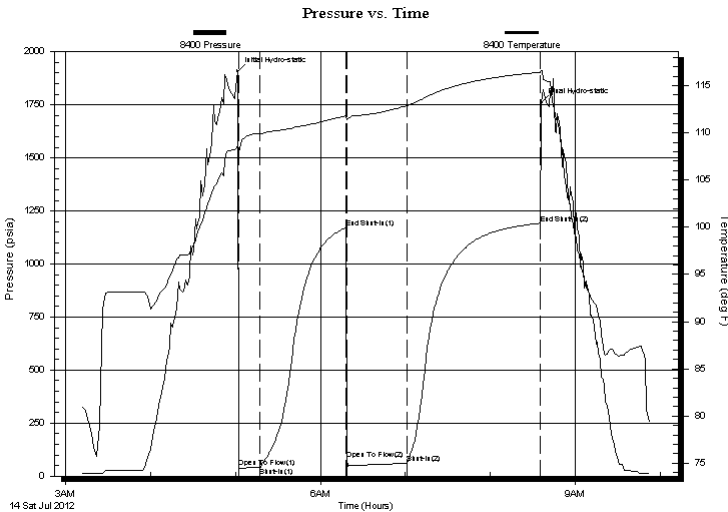
GENERAL INFORMATION:

Formation: **Arbuckle**
 Deviated: No Whipstock: ft (KB) Test Type: Conventional Bottom Hole (Initial)
 Time Tool Opened: 05:02:00 Tester: Dustin Ellis
 Time Test Ended: 09:53:00 Unit No: 3315-Great Bend-30
 Interval: **3726.00 ft (KB) To 3738.00 ft (KB) (TVD)** Reference Elevations: 1990.00 ft (KB)
 Total Depth: 3738.00 ft (KB) (TVD) 1982.00 ft (CF)
 Hole Diameter: 7.88 inches Hole Condition: Fair KB to GR/CF: 8.00 ft

Serial #: 8400 Outside
 Press @ Run Depth: 1191.54 psia @ 3735.00 ft (KB) Capacity: 5000.00 psia
 Start Date: 2012.07.14 End Date: 2012.07.14 Last Calib.: 2012.07.14
 Start Time: 03:11:00 End Time: 09:53:00 Time On Btm: 2012.07.14 @ 05:01:30
 Time Off Btm: 2012.07.14 @ 08:36:00

TEST COMMENT: 1st Open 15 minutes Fair building blow built to bottom bucket 8 minutes
 1st Shut in 60 minutes No blow back
 2nd Open 45 minutes Fair building blow blew bottom bucket 2 minutes
 2nd Shut in 90 minutes No blow back

PRESSURE SUMMARY



Time (Min.)	Pressure (psia)	Temp (deg F)	Annotation
0	1908.49	108.63	Initial Hydro-static
1	41.67	108.28	Open To Flow (1)
16	42.13	109.89	Shut-In(1)
77	1170.08	111.81	End Shut-In(1)
77	81.34	111.36	Open To Flow (2)
120	60.86	112.89	Shut-In(2)
214	1191.54	116.42	End Shut-In(2)
215	1758.68	116.58	Final Hydro-static

Recovery

Length (ft)	Description	Volume (bbl)
8.00	Oil cut mud 10% oil 90% mud	0.11
60.00	Oil cut mud 10%oil 90% mud	0.84
0.00		0.00

Gas Rates

Choke (inches)	Pressure (psia)	Gas Rate (Mcf/d)



DRILL STEM TEST REPORT

TOOL DIAGRAM

F.G Holl Company

14-20s-15w-Barton

9431 East Central Suite 100
Wichita Kansas 67206

Dunavan 1-14

Job Ticket: 17305

DST#: 4

ATTN: Frank Greenbaum

Test Start: 2012.07.14 @ 03:11:00

Tool Information

Drill Pipe:	Length: 3728.00 ft	Diameter: 3.80 inches	Volume: 52.29 bbl	Tool Weight: 2000.00 lb
Heavy Wt. Pipe:	Length: 0.00 ft	Diameter: 0.00 inches	Volume: 0.00 bbl	Weight set on Packer: 20000.00 lb
Drill Collar:	Length: 0.00 ft	Diameter: 0.00 inches	Volume: 0.00 bbl	Weight to Pull Loose: 55000.00 lb
			<u>Total Volume: 52.29 bbl</u>	Tool Chased 0.00 ft
Drill Pipe Above KB:	30.00 ft			String Weight: Initial 46000.00 lb
Depth to Top Packer:	3726.00 ft			Final 46000.00 lb
Depth to Bottom Packer:	ft			
Interval between Packers:	12.00 ft			
Tool Length:	40.00 ft			
Number of Packers:	2	Diameter: 6.75 inches		

Tool Comments:

Tool Description	Length (ft)	Serial No.	Position	Depth (ft)	Accum. Lengths
Shut-In Tool	5.00			3703.00	
Hydraulic Tool	5.00			3708.00	
Jars	6.00			3714.00	
Safety Joint	2.00			3716.00	
Packer	5.00			3721.00	28.00 Bottom Of Top Packer
Packer	5.00			3726.00	
Anchor	7.00			3733.00	
Recorder	1.00	8405	Inside	3734.00	
Recorder	1.00	8400	Outside	3735.00	
Bull Plug	3.00			3738.00	12.00 Bottom Packers & Anchor
Total Tool Length:	40.00				



DRILL STEM TEST REPORT

FLUID SUMMARY

F.G Holl Company
 9431 East Central Suite 100
 Wichita Kansas 67206
 ATTN: Frank Greenbaum

14-20s-15w-Barton
Dunavan 1-14
 Job Ticket: 17305 **DST#: 4**
 Test Start: 2012.07.14 @ 03:11:00

Mud and Cushion Information

Mud Type: Gel Chem	Cushion Type:	Oil API:	deg API
Mud Weight: 9.00 lb/gal	Cushion Length: ft	Water Salinity:	ppm
Viscosity: 62.00 sec/qt	Cushion Volume: bbl		
Water Loss: 8.39 in ³	Gas Cushion Type:		
Resistivity: ohm.m	Gas Cushion Pressure: psia		
Salinity: 6700.00 ppm			
Filter Cake: 1.00 inches			

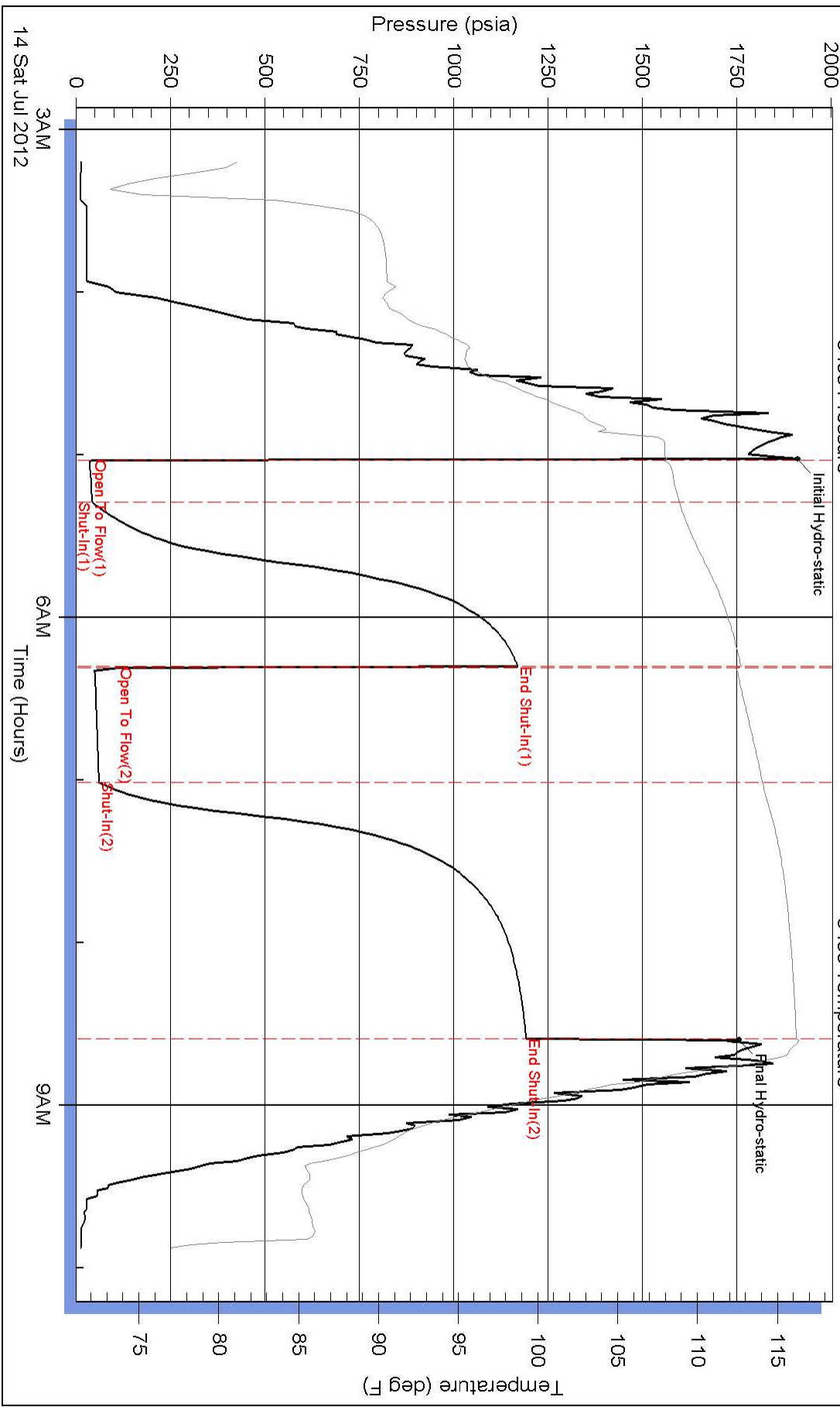
Recovery Information

Recovery Table

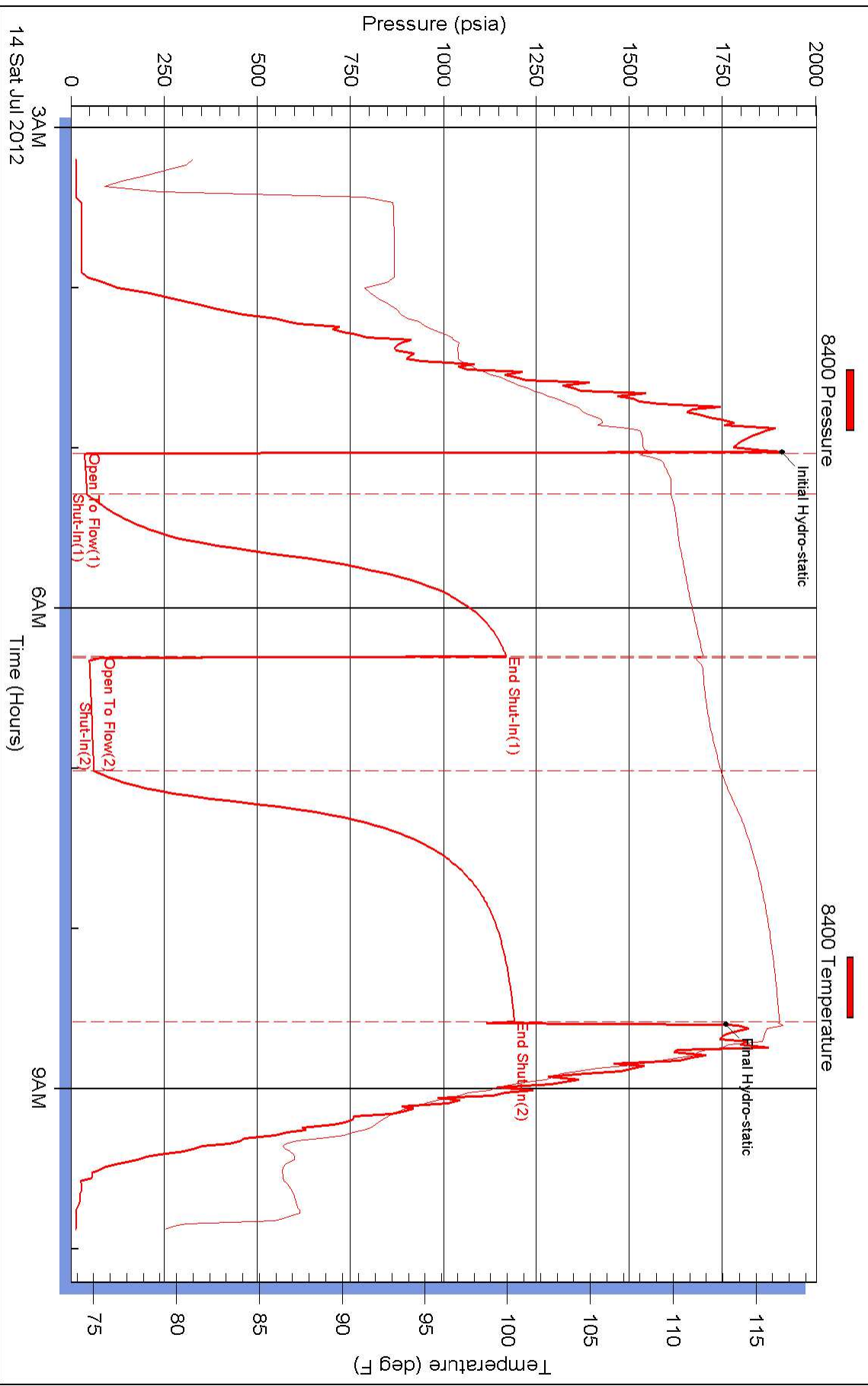
Length ft	Description	Volume bbl
8.00	Oil cut mud 10% oil 90% mud	0.112
60.00	Oil cut mud 10% oil 90% mud	0.842
0.00		0.000

Total Length: ft Total Volume: 0.982 bbl
 Num Fluid Samples: 0 Num Gas Bombs: 0 Serial #:
 Laboratory Name: Laboratory Location:
 Recovery Comments:

Pressure vs. Time



Pressure vs. Time





DRILL STEM TEST REPORT

Prepared For: **F.G Holl Company**

9431 East Central Suite 100
Wichita Kansas 67206

ATTN: Frank Greenbaum

Dunavan 1-14

14-20s-15w-Barton

Start Date: 2012.07.14 @ 04:52:00

End Date: 2012.07.14 @ 11:48:00

Job Ticket #: 17306 DST #: 5

Superior Testers Enterprises LLC
PO Box 138 Great Bend KS 67530
1-800-792-6902

Printed: 2012.07.14 @ 22:16:46



DRILL STEM TEST REPORT

F.G Holl Company
 9431 East Central Suite 100
 Wichita Kansas 67206
 ATTN: Frank Greenbaum

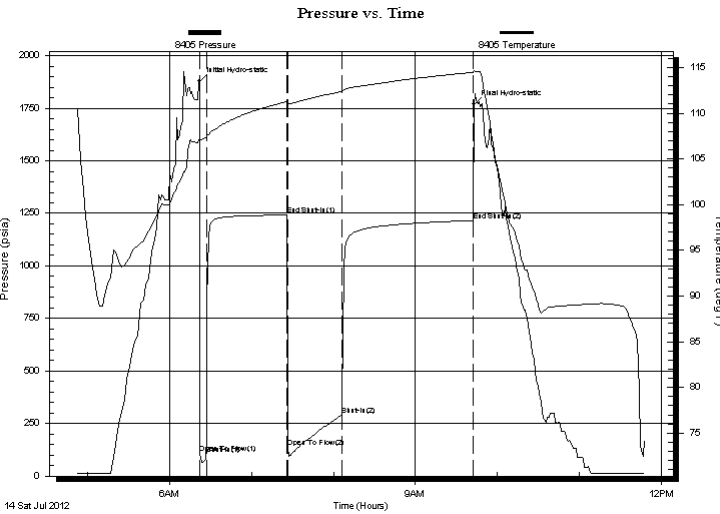
14-20s-15w-Barton
Dunavan 1-14
 Job Ticket: 17306 **DST#: 5**
 Test Start: 2012.07.14 @ 04:52:00

GENERAL INFORMATION:

Formation: **Arbuckle**
 Deviated: No Whipstock: ft (KB)
 Test Type: Conventional Bottom Hole (Initial)
 Time Tool Opened: 06:22:30 Tester: Dustin Ellis
 Time Test Ended: 11:48:00 Unit No: 3315-Great Bend-30
 Interval: **3739.00 ft (KB) To 3753.00 ft (KB) (TVD)** Reference Elevations: 1990.00 ft (KB)
 Total Depth: 3753.00 ft (KB) (TVD) 1982.00 ft (CF)
 Hole Diameter: 7.88 inches Hole Condition: Fair KB to GR/CF: 8.00 ft

Serial #: 8405 Inside
 Press @ Run Depth: 289.50 psia @ 3749.00 ft (KB) Capacity: 5000.00 psia
 Start Date: 2012.07.14 End Date: 2012.07.14 Last Calib.: 2012.07.14
 Start Time: 04:52:00 End Time: 11:48:00 Time On Btm: 2012.07.14 @ 06:22:00
 Time Off Btm: 2012.07.14 @ 09:42:30

TEST COMMENT: 1st Open 5 minutes Strong blow bottom bucket 4 minutes
 1st Shut in 60 minutes Yes blow back
 2nd Open 45 minutes Strong blow bottom bucket 4 minutes
 2nd Shut in 90 minutes Yes blow back



PRESSURE SUMMARY

Time (Min.)	Pressure (psia)	Temp (deg F)	Annotation
0	1877.23	107.18	Initial Hydro-static
1	107.28	106.94	Open To Flow (1)
5	145.47	107.34	Shut-In(1)
64	1242.42	111.28	End Shut-In(1)
65	137.49	110.87	Open To Flow (2)
104	289.50	112.37	Shut-In(2)
200	1216.05	114.47	End Shut-In(2)
201	1767.73	114.69	Final Hydro-static

Recovery

Length (ft)	Description	Volume (bbl)
120.00	Oil cut mud	1.68
0.00	10%Oil 85%Mud 5%Water	0.00
475.00	Water 5%mud 95%Water	6.66

Gas Rates

	Choke (inches)	Pressure (psia)	Gas Rate (Mcf/d)



DRILL STEM TEST REPORT

F.G Holl Company
 9431 East Central Suite 100
 Wichita Kansas 67206
 ATTN: Frank Greenbaum

14-20s-15w-Barton
Dunavan 1-14
 Job Ticket: 17306 **DST#: 5**
 Test Start: 2012.07.14 @ 04:52:00

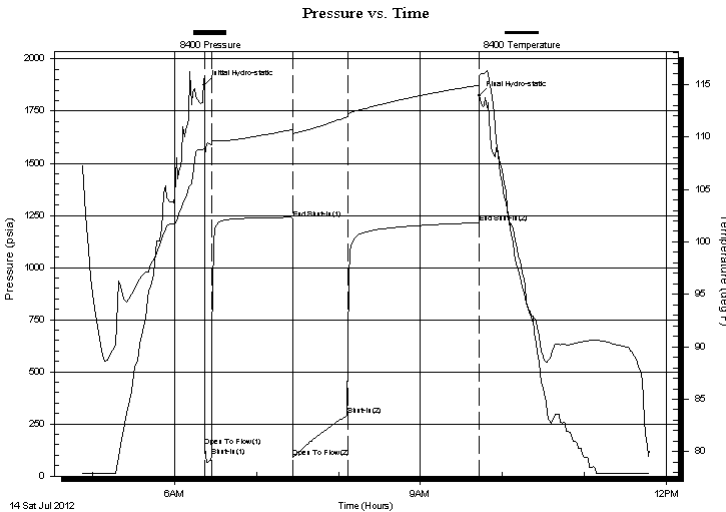
GENERAL INFORMATION:

Formation: **Arbuckle**
 Deviated: No Whipstock: ft (KB)
 Time Tool Opened: 06:22:30
 Time Test Ended: 11:48:00
 Interval: **3739.00 ft (KB) To 3753.00 ft (KB) (TVD)**
 Total Depth: 3753.00 ft (KB) (TVD)
 Hole Diameter: 7.88 inches Hole Condition: Fair
 Test Type: Conventional Bottom Hole (Initial)
 Tester: Dustin Ellis
 Unit No: 3315-Great Bend-30
 Reference Elevations: 1990.00 ft (KB)
 1982.00 ft (CF)
 KB to GR/CF: 8.00 ft

Serial #: 8400 Outside
 Press @ Run Depth: 1214.94 psia @ 3750.00 ft (KB) Capacity: 5000.00 psia
 Start Date: 2012.07.14 End Date: 2012.07.14 Last Calib.: 2012.07.14
 Start Time: 04:52:00 End Time: 11:48:00 Time On Btm: 2012.07.14 @ 06:22:00
 Time Off Btm: 2012.07.14 @ 09:43:00

TEST COMMENT: 1st Open 5 minutes Strong blow bottom bucket 4 minutes
 1st Shut in 60 minutes Yes blow back
 2nd Open 45 minutes Strong blow bottom bucket 4 minutes
 2nd Shut in 90 minutes Yes blow back

PRESSURE SUMMARY



Time (Min.)	Pressure (psia)	Temp (deg F)	Annotation
0	1876.22	108.97	Initial Hydro-static
1	141.22	108.30	Open To Flow (1)
5	95.30	109.25	Shut-In(1)
65	1235.70	110.71	End Shut-In(1)
65	91.32	110.30	Open To Flow (2)
105	291.28	111.91	Shut-In(2)
201	1214.94	114.91	End Shut-In(2)
201	1824.82	115.81	Final Hydro-static

Recovery

Length (ft)	Description	Volume (bbl)
120.00	Oil cut mud	1.68
0.00	10%Oil 85%Mud 5%Water	0.00
475.00	Water 5%mud 95%Water	6.66

Gas Rates

	Choke (inches)	Pressure (psia)	Gas Rate (Mcf/d)



DRILL STEM TEST REPORT

TOOL DIAGRAM

F.G Holl Company

14-20s-15w-Barton

9431 East Central Suite 100
Wichita Kansas 67206

Dunavan 1-14

Job Ticket: 17306

DST#: 5

ATTN: Frank Greenbaum

Test Start: 2012.07.14 @ 04:52:00

Tool Information

Drill Pipe:	Length: 3732.00 ft	Diameter: 3.80 inches	Volume: 52.35 bbl	Tool Weight: 2000.00 lb
Heavy Wt. Pipe:	Length: 0.00 ft	Diameter: 0.00 inches	Volume: 0.00 bbl	Weight set on Packer: 20000.00 lb
Drill Collar:	Length: 0.00 ft	Diameter: 0.00 inches	Volume: 0.00 bbl	Weight to Pull Loose: 50000.00 lb
			<u>Total Volume: 52.35 bbl</u>	Tool Chased 0.00 ft
Drill Pipe Above KB:	21.00 ft			String Weight: Initial 46000.00 lb
Depth to Top Packer:	3739.00 ft			Final 47000.00 lb
Depth to Bottom Packer:	ft			
Interval between Packers:	14.00 ft			
Tool Length:	42.00 ft			
Number of Packers:	2	Diameter: 6.75 inches		

Tool Comments:

Tool Description	Length (ft)	Serial No.	Position	Depth (ft)	Accum. Lengths
Shut-In Tool	5.00			3716.00	
Hydraulic Tool	5.00			3721.00	
Jars	6.00			3727.00	
Safety Joint	2.00			3729.00	
Packer	5.00			3734.00	28.00 Bottom Of Top Packer
Packer	5.00			3739.00	
Anchor	9.00			3748.00	
Recorder	1.00	8405	Inside	3749.00	
Recorder	1.00	8400	Outside	3750.00	
Bull Plug	3.00			3753.00	14.00 Bottom Packers & Anchor
Total Tool Length:	42.00				



DRILL STEM TEST REPORT

FLUID SUMMARY

F.G Holl Company
 9431 East Central Suite 100
 Wichita Kansas 67206
 ATTN: Frank Greenbaum

14-20s-15w-Barton
Dunavan 1-14
 Job Ticket: 17306 **DST#: 5**
 Test Start: 2012.07.14 @ 04:52:00

Mud and Cushion Information

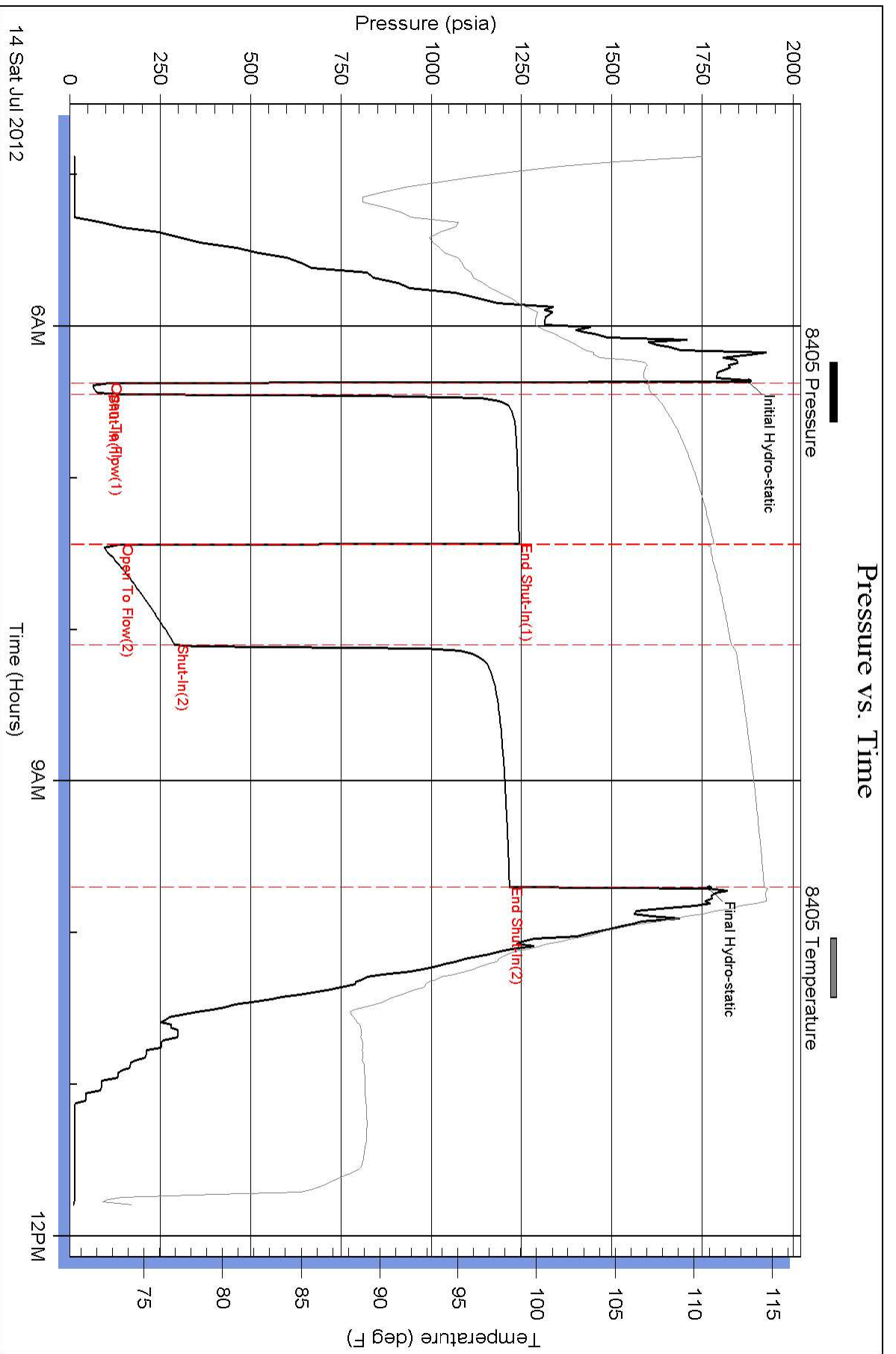
Mud Type: Gel Chem	Cushion Type:	Oil API:	deg API
Mud Weight: 9.00 lb/gal	Cushion Length: ft	Water Salinity:	ppm
Viscosity: 46.00 sec/qt	Cushion Volume: bbl		
Water Loss: 9.60 in ³	Gas Cushion Type:		
Resistivity: ohm.m	Gas Cushion Pressure: psia		
Salinity: 7100.00 ppm			
Filter Cake: 1.00 inches			

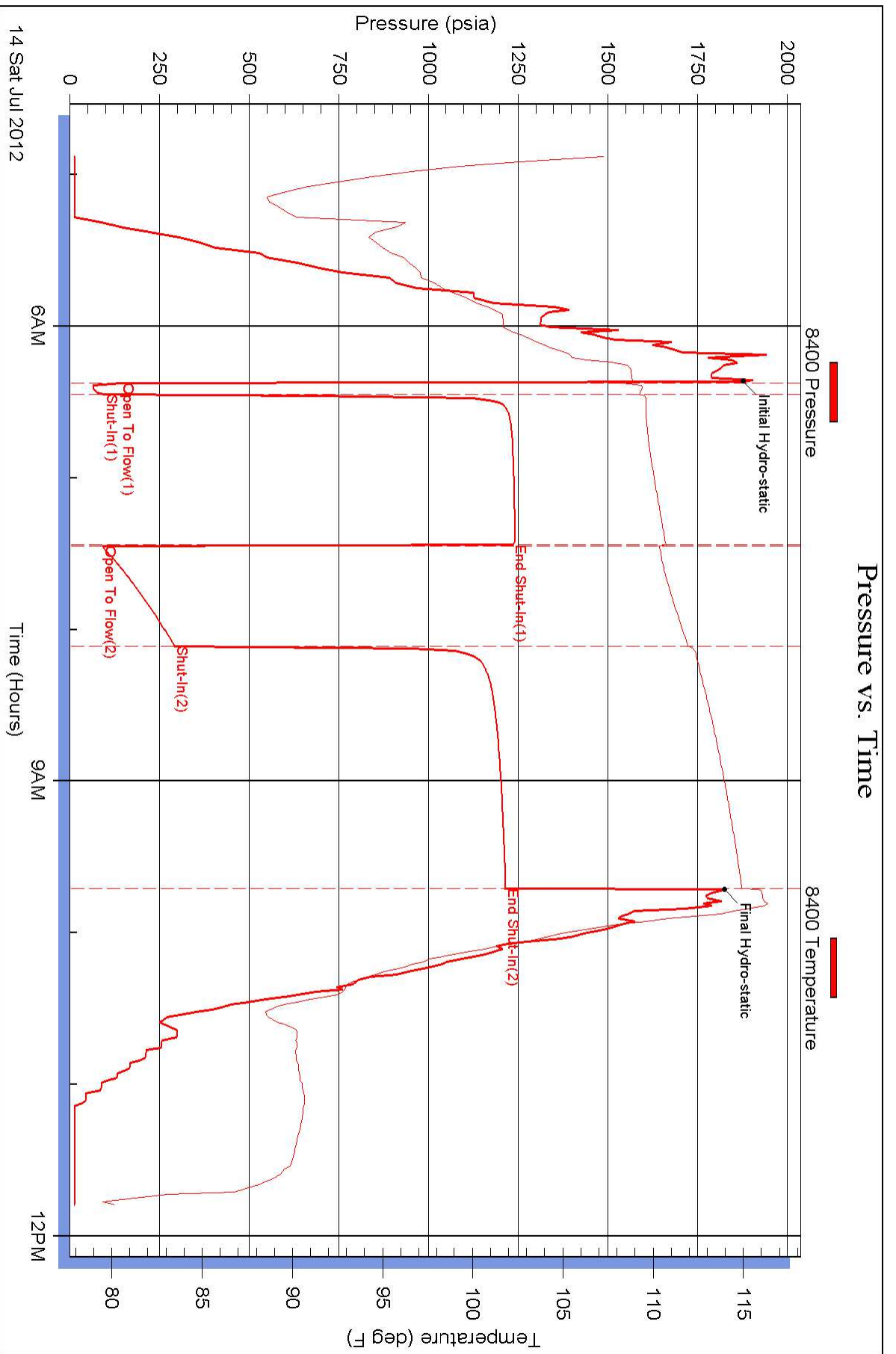
Recovery Information

Recovery Table

Length ft	Description	Volume bbl
120.00	Oil cut mud	1.683
0.00	10%Oil 85%Mud 5%Water	0.000
475.00	Water 5%mud 95%Water	6.663

Total Length: 595.00 ft Total Volume: 8.346 bbl
 Num Fluid Samples: 0 Num Gas Bombs: 0 Serial #:
 Laboratory Name: Laboratory Location:
 Recovery Comments:





Mud-Co / Service Mud Inc.

Operator **FG Holl** County **Barton** State **Kansas** Pump **6** X **14** X **60** SPM Casing Program **8 5/8" @ 956 ft.**
 Well **Dunavan #1-14** Location **1982EGL** GPM **7.75** BPM **" @ "** ft.
 Contractor **Duke #8** Sec **14** TWP **20S** RNG **15W** D.P. **4.5** in. **191** FT/MIN R.A. **" @ "** ft.
 Stockpoint **Pratt, Ks.** Date **7/6/2012** Engineer **Rick Hughes** Collar **6.25** in. **495** ft. **348** FT/MIN R.A. Total Depth **3850'** ft.

DATE	DEPTH feet	WEIGHT lb/gal	VISCOSITY			GELS 10 sec / 10 min.	pH Strip _ Meter _	FILTRATION/IRLTRATION ANALYSIS					SAND %	RETORT			L.C.M.	Pump Press. PSI	CUMULATIVE COST	REMARKS AND TREATMENT
			Sec API @_F	PV @_F	Yp			ml API	Cake 32nds	Pres. #/BBL	Cl ppm	Ca ppm		Solids %	Oil %	Water %				
7/6	0																			RURT
7/8	1112	8.9	32	6	8	2/4	12.0	N/C	-		3,000	N/C		4.2		95.8				Drlg. Displace @ 1698/starch
7/9	2019	9.5	46	8	22	21/28	7.0	18.6	4		65m	Hvy		4.7		95.3				Drlg. Displace @ 2590/chem
7/10	2736	8.7	45	11	9	5/23	11.5	6.8	1		3,700	20		2.7		97.3				Drlg.
7/11	3205	9.2	56	17	14	13/43	10.5	7.2	1		5,900	20		6.1		93.9				Drlg.
7/12	3700	9.1	56	18	11	18/47	10.0	8.0	1		4,300	20		5.5		94.5	2			CFS DST #1 @ 3681'
7/13	3686	9.0	62	12	14	12/47	8.0	8.4	1		6,700	80		4.6		95.4	2			Drlg. DST #2 @ 3681'
7/14	3738	9.2	46	9	13	10/45	8.5	9.6	1		7,100	60		6.0		94.0	1			DST #4 DST #3 @ 3725'
7/15	3850	9.0	62	12	16	12/49	9.5	8.8	1		8,400	20		4.5		95.5	1			TOH w/ Logs DST #4 @ 3738'
7/16	3850																			RDRT DST #5 @ 3753'
																			FINAL: Ran 5 DST's, Logs OK, Ran 5 1/2 csg	
																			Reserve Pit, Chl content ppm: 25,000	
																			Estimated Volume: <200 bbls of free fluids	

MUD-CO / SERVICE MUD INC.

100 S. Main Suite #310
Wichita, Ks. 67202
316/264-2814 Fax: 316/264-5024

DRILLING MUD RECAP

Materials	Sacks	Amount	Materials	Sacks	Amount	Amount
C/S HULLS	38					
CAUSTIC SODA	14					
DESCO	2					
DRILL PAK	7					
MIL-GUARD	2					
PREMIUM GEL	390					
SALT CLAY	1					
SODA ASH	26					
STARCH	63					
SUPER LIG	12					
						Total Mud Cost
						Trucking Cost
						Trucking Surcharge
						Taxes
						TOTAL COST



BASICSM
ENERGY SERVICES
PRESSURE PUMPING & WIRELINE

10244 NE Hwy. 61
P.O. Box 8613
Pratt, Kansas 67124
Phone 620-672-1201

FIELD SERVICE TICKET
1718 06703 A

DATE _____ TICKET NO. _____

DATE OF JOB: 7-7-12		DISTRICT: Pratt		NEW WELL <input checked="" type="checkbox"/> OLD WELL <input type="checkbox"/>		PROD <input type="checkbox"/> INJ <input type="checkbox"/> WDW <input type="checkbox"/>		CUSTOMER ORDER NO.:		
CUSTOMER: F. B. Hull				LEASE: Dunagan				WELL NO. 1-14		
ADDRESS:				COUNTY: Barton		STATE: KS				
CITY:		STATE:		SERVICE CREW: Orlando, McBraw, Pearson						
AUTHORIZED BY:				JOB TYPE: C New - 8 5/8 Surface						
EQUIPMENT#	HRS	EQUIPMENT#	HRS	EQUIPMENT#	HRS	TRUCK CALLED	DATE	AM	PM	TIME
37285	1						7-7-12			
33709-20920	1									10:30
19831-19862	1									2:30
										3:30
										4:30
						MILES FROM STATION TO WELL: 55				

CONTRACT CONDITIONS: (This contract must be signed before the job is commenced or merchandise is delivered).

The undersigned is authorized to execute this contract as an agent of the customer. As such, the undersigned agrees and acknowledges that this contract for services, materials, products, and/or supplies includes all of and only those terms and conditions appearing on the front and back of this document. No additional or substitute terms and/or conditions shall become a part of this contract without the written consent of an officer of Basic Energy Services LP.

SIGNED: *[Signature]*
(WELL OWNER, OPERATOR, CONTRACTOR OR AGENT)

ITEM/PRICE REF. NO.	MATERIAL, EQUIPMENT AND SERVICES USED	UNIT	QUANTITY	UNIT PRICE	\$ AMOUNT
CP101	A-Con Blend	SK	200		
CP102	Common Cement	SK	175		
CL102	Celloflake	Lb	94		
CL109	Calcium Chloride	Lb	894		
CE105	Top Rubber Plug 8 5/8"	ea	1		
CE105	Centralizer 8 5/8"	ea	3		
E100	Pickup Mileage	mi	55		
E101	Heavy Equipment Mileage	mi	110		
E113	Bulk Delivery	TW	971		
CE201	Depth Charge 501-1000'	ea	1		
CE240	Blending & mixing Charge	SK	375		
CE504	Plug Container	ea	1		
S003	Service Supervisor	ea	1		

SUB TOTAL

CHEMICAL / ACID DATA:

SERVICE & EQUIPMENT	%TAX ON \$	<i>BW</i>
MATERIALS	%TAX ON \$	

TOTAL

SERVICE REPRESENTATIVE: *Steve Dicks*

THE ABOVE MATERIAL AND SERVICE ORDERED BY CUSTOMER AND RECEIVED BY: *[Signature]*

(WELL OWNER OPERATOR CONTRACTOR OR AGENT)

FIELD SERVICE ORDER NO.

Customer F.L. Hall	Lease No.	Date 7-7-12	
Lease Dugan	Well # 1-11	County Butler	
Field Order # 6203	Station Pratt	Casing 2 1/2"	Depth 756
Type Job CNW-85% Surf	Formation	Legal Description 14-20-15	

PIPE DATA		PERFORATING DATA		FLUID USED	TREATMENT RESUME		
Casing Size	Tubing Size	Shots/Ft		Acid	RATE	PRESS	ISIP
2 1/2"	2 1/8"	200	Acid Based 2.47/61	Pre Pad	Max		5 Min.
Depth: 756	Depth	From 1759	To Conn	Pad	Min		10 Min.
Volume	Volume	From	To	Frac	Avg		15 Min.
Max Press	Max Press	From	To		HHP Used		Annulus Pressure
Well Connection	Annulus Vol.	From	To	Flush 60	Gas Volume		Total Load
Plug Depth	Packer Depth	From	To				

Customer Representative Steve Shaw	Station Manager Dave Scott	Treater Steve Orlando
Service Units 17283 33708 26970 19851 19862	Driver Names D. D. D. M. J. P.	

Time	Casing Pressure	Tubing Pressure	Bbls. Pumped	Rate	Service Log
10:30 A					On location - Safety Meeting
					Run 26 7/8 2 1/8" casing
					Circulation @ 900-500-400
					Casing on Bottom
					Break Circ w/ H ₂ O
2:30	200		88	"	Mix 2000 gal H ₂ O @ 15.6"/61
2:55	200		37.5	"	Mix 175 gal Conn @ 15.6"/61
					Makeup plug
3:13	0		0	"	Start H ₂ O Displacement
3:26	250		46	"	Conn @ 70 Surface
3:30	250		60	"	Plug Down
					Circulation This Job
					Circ @ 1100 1466 L Top 1
					Job Can Be
					Thank Steve



BASICSM
ENERGY SERVICES
PRESSURE PUMPING & WIRELINE

10244 NE Hwy. 61
P.O. Box 8613
Pratt, Kansas 67124
Phone 620-672-1201

FIELD SERVICE TICKET
1718 06517 A

DATE _____ TICKET NO. cont

DATE OF JOB <u>07-16-12</u> DISTRICT <u>PRATT KS</u>		NEW WELL <input checked="" type="checkbox"/> OLD WELL <input type="checkbox"/> PROD <input type="checkbox"/> INJ <input type="checkbox"/> WDW <input type="checkbox"/> CUSTOMER ORDER NO.:								
CUSTOMER <u>F. G. HOLL</u>		LEASE <u>DUNAVAN</u> <u>1-14</u> WELL NO.								
ADDRESS		COUNTY <u>BARTON</u> STATE <u>KS</u>								
CITY STATE		SERVICE CREW <u>Sullivan, Anthony, Lawrence</u>								
AUTHORIZED BY		JOB TYPE: <u>CNW 5 1/2 hrs</u>								
EQUIPMENT#	HRS	EQUIPMENT#	HRS	EQUIPMENT#	HRS	TRUCK CALLED	DATE	AM	PM	TIME
<u>23708-20970</u>	<u>45</u>	<u>m2</u>					<u>7-15-12</u>			<u>5:30</u>
<u>19876-19918</u>	<u>45</u>	<u>m2</u>				ARRIVED AT JOB	<u>7-15-12</u>			<u>10:00</u>
<u>37900</u>						START OPERATION	<u>7-16-12</u>			<u>3:00</u>
						FINISH OPERATION				<u>3:45</u>
						RELEASED				<u>4:30</u>
						MILES FROM STATION TO WELL				<u>59</u>

CONTRACT CONDITIONS: (This contract must be signed before the job is commenced or merchandise is delivered).

The undersigned is authorized to execute this contract as an agent of the customer. As such, the undersigned agrees and acknowledges that this contract for services, materials, products, and/or supplies includes all of and only those terms and conditions appearing on the front and back of this document. No additional or substitute terms and/or conditions shall become a part of this contract without the written consent of an officer of Basic Energy Services LP.

SIGNED: [Signature]
(WELL OWNER, OPERATOR, CONTRACTOR OR AGENT)

ITEM/PRICE REF. NO.	MATERIAL, EQUIPMENT AND SERVICES USED	UNIT	QUANTITY	UNIT PRICE	\$ AMOUNT
CP 105	AA-2 cement	SK	125		
CP 103	60/40 poz cement	SK	75		
CC 102	Cellok	lb	32		
CC 105	C-41P	lb	30		
CC 111	SALT	lb	562		
CC 113	C-44	lb	118		
CC 129	FIA-322	lb	118		
CC 201	gilsite	lb	1629		
CF 607	Latch door Play 5/12	SA	1		
CF 1251	Auto Fall Seat	SA	1		
CF 1651	Toolbox	SA	8		
CF 1901	BASKET	SA	1		
CF 2002	Cement Scraper	SA	40		
CC 154	Super Flash	gal	500		
CF 100	padding rd	mi	55		

CHEMICAL / ACID DATA:			

					SUB TOTAL	
					<u>DLS</u>	
		SERVICE & EQUIPMENT	%TAX ON \$			
		MATERIALS	%TAX ON \$			
		<u>Thank you</u>		TOTAL		

SERVICE REPRESENTATIVE: <u>[Signature]</u>	THE ABOVE MATERIAL AND SERVICE ORDERED BY CUSTOMER AND RECEIVED BY: <u>[Signature]</u>
FIELD SERVICE ORDER NO.	(WELL OWNER OPERATOR CONTRACTOR OR AGENT)



BASIC
ENERGY SERVICES
PRESSURE PUMPING & WIRELINE

10244 NE Hwy. 61
P.O. Box 8613
Pratt, Kansas 67124
Phone 620-672-1201

FIELD SERVICE TICKET

1718 ~~06518~~ A

Continuation of
TICKET NO. 171806517A

DATE _____

DATE OF JOB: 07-16-12			DISTRICT: Pratt			NEW WELL <input checked="" type="checkbox"/>		OLD WELL <input type="checkbox"/>		PROD <input type="checkbox"/>		INJ <input type="checkbox"/>		WDW <input type="checkbox"/>		CUSTOMER ORDER NO.:	
CUSTOMER: F.P. Yodl						LEASE: DUNAVAN			1-14			WELL NO.:					
ADDRESS:						COUNTY: BARTON			STATE: KS								
CITY:						STATE:			SERVICE CREW:								
AUTHORIZED BY:						JOB TYPE: ON W 5% Long Stray											
EQUIPMENT#	HRS	EQUIPMENT#	HRS	EQUIPMENT#	HRS	TRUCK CALLED	DATE	AM	PM	TIME							
33708-20920						ARRIVED AT JOB				AM							
19826-19918						START OPERATION				AM							
37900						FINISH OPERATION				AM							
						RELEASED				AM							
						MILES FROM STATION TO WELL											

CONTRACT CONDITIONS: (This contract must be signed before the job is commenced or merchandise is delivered).

The undersigned is authorized to execute this contract as an agent of the customer. As such, the undersigned agrees and acknowledges that this contract for services, materials, products, and/or supplies includes all of and only those terms and conditions appearing on the front and back of this document. No additional or substitute terms and/or conditions shall become a part of this contract without the written consent of an officer of Basic Energy Services LP.

SIGNED: *[Signature]*
(WELL OWNER, OPERATOR, CONTRACTOR OR AGENT)

ITEM/PRICE REF. NO.	MATERIAL, EQUIPMENT AND SERVICES USED	UNIT	QUANTITY	UNIT PRICE	\$ AMOUNT
C 101	Heavy Egt mi	mi'	110		
C 113	Bulk Delivery	TM	503		
CE 204	Depth Charge	SA	1		
CE 240	Blending - mix	SK	200		
CE 501	PAKING SWISS	SA	1		
CE 504	Plant Custom Rental	SA	1		
S 003	Schwin Super	SA	1		

SUB TOTAL
DLS

CHEMICAL / ACID DATA:			

SERVICE & EQUIPMENT	%TAX ON \$
MATERIALS	%TAX ON \$
TOTAL	

SERVICE REPRESENTATIVE: <i>[Signature]</i>	THE ABOVE MATERIAL AND SERVICE ORDERED BY CUSTOMER AND RECEIVED BY: <i>[Signature]</i>
FIELD SERVICE ORDER NO.:	(WELL OWNER OPERATOR CONTRACTOR OR AGENT)

Customer 7.9 HOLL	Lease No.	Date
Lease DUNNAN	Well # 1-14	07-16-12
Field Order # 6277	Station PRATT KS	Casing 5/2
Type Job CDW 5 1/2 1/2 1/2	Formation	Depth 3848
		County BARTON
		State KS
		Legal Description 14-20-15

PIPE DATA		PERFORATING DATA		FLUID USED		TREATMENT RESUME		
Casing Size	Tubing Size	Shots/Ft		Acid	RATE	PRESS	ISIP	
5 1/2								
Depth 3848	Depth	From	To	Pre Pad	Max		5 Min.	
Volume 93 1/2	Volume	From	To	Pad	Min		10 Min.	
Max Press 2000	Max Press	From	To	Frac	Avg		15 Min.	
Well Connection PC	Annulus Vol.	From	To		HHP Used		Annulus Pressure	
Plug Depth 3838	Packer Depth	From	To	Flush	Gas Volume		Total Load	

Customer Representative	Station Manager DAVE SCOTT	Treater Robert [Signature]
Service Units 37900 33708 20970 19826 19918		
Driver Names Sullivan Anthony Lawrence		

Time	Casing Pressure	Tubing Pressure	Bbls. Pumped	Rate	Service Log
10:00 AM					on loc safety mat
					Rin 92 5 1/2 1/2 14 csg
					cont. 1, 2, 3, 4, 5, 6, 7, 8, 10, 11, 12, 13, 14, 15
12:45					CASING ON BOTTOM
12:55					Hook Rig circ.
3:00	200		5	3	at spicer
			12		at Sullivan Truck #
			5		SPICER
			7	4	mix cont 25% SCOURER @ 14 DDG
			22	1.5	mix cont 125% AA-2 cont @ 15 DDG
					cont mixed shot down, with 1/2 day pump
					Release Plug
				6	at Disj
	450		71		Lift Ps
	500			4	Slow Rate
3:40	1500		93 1/2		Plug down
			7	2	Plug R.H. w/ 30ft
			5		Plug M.H. w/ 70 ft
					EOB Complete

Thank you



BASICSM
ENERGY SERVICES
PRESSURE PUMPING & WIRELINE

10244 NE Hwy. 61
P.O. Box 8613
Pratt, Kansas 67124
Phone 620-672-1201

FIELD SERVICE TICKET
1718 06865 A

DATE _____ TICKET NO. _____

DATE OF JOB: 8-23-2012 DISTRICT		NEW WELL <input checked="" type="checkbox"/> OLD WELL <input type="checkbox"/> PROD <input type="checkbox"/> INJ <input type="checkbox"/> WDW <input type="checkbox"/> CUSTOMER ORDER NO.:							
CUSTOMER: FG HOLL CO. LLC		LEASE: DONAVAN WELL NO. 1-14							
ADDRESS		COUNTY: BARTON STATE: KS.							
CITY STATE		SERVICE CREW: LESLEY, MARQUEZ, LAWRENCE							
AUTHORIZED BY		JOB TYPE: CNW - SQUEEZE PERFS							
EQUIPMENT#	HRS	EQUIPMENT#	HRS	EQUIPMENT#	HRS	TRUCK CALLED	DATE	AM	TIME
37586	4					P-23-18	8-23-12	AM	6:00
19889-19843	4							AM	7:30
19826-19860	4							AM	7:45
								AM	10:45
								AM	11:30
						MILES FROM STATION TO WELL			55

CONTRACT CONDITIONS: (This contract must be signed before the job is commenced or merchandise is delivered).

The undersigned is authorized to execute this contract as an agent of the customer. As such, the undersigned agrees and acknowledges that this contract for services, materials, products, and/or supplies includes all of and only those terms and conditions appearing on the front and back of this document. No additional or substitute terms and/or conditions shall become a part of this contract without the written consent of an officer of Basic Energy Services LP.

SIGNED: [Signature]
(WELL OWNER, OPERATOR, CONTRACTOR OR AGENT)

ITEM/PRICE REF. NO.	MATERIAL, EQUIPMENT AND SERVICES USED	UNIT	QUANTITY	UNIT PRICE	\$ AMOUNT
CP 1000	COMMON CMT.	SK	25		
CP 1000	COMMON CMT.	SK	25		
CC 105	C-417 DEFOAMER	lb	6		
CC 112	CEMENT FRICTION REDUCER	lb	8		
CC 129	FLA-322 LOW FLUID LOSS	lb	20		
E 100	PICKUP MILEAGE	MI	55		
E 101	HEAVY EQUIPMENT MILEAGE	MI	110		
E 113	BULK DELIVERY CHARGE	TM	1.32		
FE 204	DEPTH CHARGE, 3000'-4000'	HR	1-4		
CE 240	BLENDING SERVICE CHARGE	SK	50		
S 003	SERVICE SUPERVISOR	EA	1		
CE 500	CMT. SQUEEZE MANIFOLD	EA	1		

SUB TOTAL

DLS

CHEMICAL / ACID DATA:			

SERVICE & EQUIPMENT	%TAX ON \$
MATERIALS	%TAX ON \$

TOTAL

SERVICE REPRESENTATIVE: [Signature] THE ABOVE MATERIAL AND SERVICE ORDERED BY CUSTOMER AND RECEIVED BY: [Signature]

(WELL OWNER OPERATOR CONTRACTOR OR AGENT)

FIELD SERVICE ORDER NO.

Customer FG HOLL CO.	Lease No.	Date 8-23-2012	
Lease DONAVAN	Well # 1-14		
Field Order # 060865	Station PRATT, KS.	Casing 5/2"	Depth
Type Job CNW - SQUEEZE PERFS	Formation	County BARTON	State Ks.
		Legal Description 14-20-15	

PIPE DATA		PERFORATING DATA		FLUID USED		TREATMENT RESUME		
Casing Size 5/2"	Tubing Size 2 7/8"	Shots/Ft	CMT	Acid 25SKS - COMMON	ADDITIVES	RATE	PRESS	ISIP
Depth	Depth 3618'	From	To	Pre Pad @ 1.22 CUFT	Max	PKR - 3110'	50 Min.	
Volume	Volume	From	To	Pad 25SKS - COMMON	Min	PERF - 3110' - 15'	10 Min.	
Max Press	Max Press	From	To	Frag @ 1.18 CUFT	Avg	3718' Min	22'	
Well Connection	Annulus Vol.	From	To		HHP Used	3718' Annulus Pressure		
Plug Depth	Packer Depth	From	To	Flush MAX 23 BBL	Gas Volume		Total Load	

Customer Representative AIDAM	Station Manager D. SCOTT	Treater K. LESLEY
--------------------------------------	---------------------------------	--------------------------

Service Units	37586	19889	19843	19820	19810				
Driver Names	LESLEY	MARQUEZ	MADRENCE						

Time	Casing Pressure	Tubing Pressure	Bbls. Pumped	Rate	Service Log
7:30 AM					ON LOCATION - SAFETY MEETING
7:45 AM					HOOK UP TO 2 7/8" TBS & 5 1/2" CSA.
8:50 AM					LOAD HOLE
8:53 AM	500		22	3	PSI UP ON BACKSIDE
8:55 AM		700	10	2.5	ESTABLISH INJECTION RATE
8:56 AM		700	6	2.5	MIX 25SKS COMMON W/ADD. @ 15.4 PPG
8:58 AM		600	6	2.5	MIX 25 SKS COMMON @ 15.6 PPG
9:02 AM					CLEAR PUMP & LINE
9:05 AM		0	0	3	START DISPLACEMENT
9:25 AM		150	12	2	CMT. ON PERFS
9:30 AM		2000	18	.5	SHUT DOWN & STAGE
10:15 AM		2000	18.5	.5	PSI UP TO 2000# - HELD
10:30 AM	500		30	3.4	RELEASE PKR. - WASH AROUND PKR.
10:43 AM	500	500			PULL 5JTS. - PSI TO 500# ON CSA & TBS.
					JOB COMPLETE,
					THANKS -
					KEVEN LESLEY



BASICSM
ENERGY SERVICES
PRESSURE PUMPING & WIRELINE

10244 NE Hwy. 61
P.O. Box 8613
Pratt, Kansas 67124
Phone 620-672-1201

FIELD SERVICE TICKET
1718 06362 A

DATE _____ TICKET NO. _____

DATE OF JOB <i>7/31/12</i>		DISTRICT <i>Pratt, KS</i>		NEW WELL <input type="checkbox"/>		OLD WELL <input checked="" type="checkbox"/>		PROD <input type="checkbox"/>		INJ <input type="checkbox"/>		WDW <input type="checkbox"/>		CUSTOMER ORDER NO.:	
CUSTOMER <i>FG Houlihan Co. LLC</i>				LEASE <i>DUNAVAN</i>				WELL NO. <i>174</i>							
ADDRESS				COUNTY <i>BARON</i>				STATE <i>KS</i>							
CITY				STATE				SERVICE CREW <i>HC NORTH ORLANDO YOUNG</i>							
AUTHORIZED BY				JOB TYPE: <i>SQUEEZE-PAV</i>											
EQUIPMENT#	HRS	EQUIPMENT#	HRS	EQUIPMENT#	HRS	TRUCK CALLED	DATE	AM	PM	TIME					
<i>19901</i>		<i>16959</i>					<i>7-31</i>			<i>1330</i>					
<i>28443</i>		<i>19918</i>	<i>2</i>							<i>1400</i>					
<i>27463</i>	<i>2</i>									<i>1600</i>					
										<i>1630</i>					
						MILES FROM STATION TO WELL					<i>55</i>				

CONTRACT CONDITIONS: (This contract must be signed before the job is commenced or merchandise is delivered).

The undersigned is authorized to execute this contract as an agent of the customer. As such, the undersigned agrees and acknowledges that this contract for services, materials, products, and/or supplies includes all of and only those terms and conditions appearing on the front and back of this document. No additional or substitute terms and/or conditions shall become a part of this contract without the written consent of an officer of Basic Energy Services LP.

SIGNED: *Rob Jones*
(WELL OWNER, OPERATOR, CONTRACTOR OR AGENT)

ITEM/PRICE REF. NO.	MATERIAL, EQUIPMENT AND SERVICES USED	UNIT	QUANTITY	UNIT PRICE	\$ AMOUNT
<i>C1700</i>	<i>Common Cement</i>	<i>SK</i>	<i>75</i>		
<i>C1732</i>	<i>C-53L</i>	<i>gal</i>	<i>5</i>		
<i>E100</i>	<i>TRUCK MILE</i>	<i>mile</i>	<i>55</i>		
<i>E101</i>	<i>TRUCK MILE</i>	<i>mile</i>	<i>110</i>		
<i>E113</i>	<i>BULL DRAG</i>	<i>TW</i>	<i>195</i>		
<i>C2204</i>	<i>DEPTH CHANGE 3001-4000</i>	<i>EA</i>	<i>1</i>		
<i>C2240</i>	<i>BLENDING CHANGE</i>	<i>SK</i>	<i>75</i>		
<i>S003</i>	<i>SQUEEZE SUPERVISOR</i>	<i>EA</i>	<i>1</i>		

SUB TOTAL

DLS

SERVICE & EQUIPMENT	%TAX ON \$
MATERIALS	%TAX ON \$

TOTAL

CHEMICAL / ACID DATA:			

SERVICE REPRESENTATIVE

Conroy

THE ABOVE MATERIAL AND SERVICE ORDERED BY CUSTOMER AND RECEIVED BY:

Rob Jones

(WELL OWNER OPERATOR CONTRACTOR OR AGENT)

FIELD SERVICE ORDER NO.

BASIC

energy services, L.P.

TREATMENT REPORT

Customer F. Hall Co. LLC	Lease No.	Date
Lease QUAIJAN	Well # 1-14	7-31-12
Field Order # 5362	Station Pratt	Casing 5/8
Type Job Doc sq. - CNW	Formation ARB	County Barton
		State KS
		Legal Description 14-20-15

PIPE DATA		PERFORATING DATA		FLUID USED		TREATMENT RESUME		
Casing Size 5/8	Tubing Size 2 1/2	Shots/Ft		Acid 75 SKS com.	RATE	PRESS	ISIP	
Depth	Depth	From 3710	To 3739	Pre Pad	Max		5 Min.	
Volume	Volume 70	From	To	Pad	Min		10 Min.	
Max Press	Max Press 3000*	From	To	Frac	Avg		15 Min.	
Well Connection	Annulus Vol.	From	To		HHP Used		Annulus Pressure	
Plug Depth	Packer Depth 3619	From	To	Flush	Gas Volume		Total Load	

Customer Representative Rob Long	Station Manager Scott	Treater Kevin & Allen
---	------------------------------	----------------------------------

Service Units	78443	19907	27463	78443	19918				
Driver Names	Allen	Kevin	Steve	Steve	Yourd				

Time	Casing Pressure	Tubing Pressure	Bbls. Pumped	Rate	Service Log
1300pm	500*		16		ON Loc Load ANN
156		500*		2	TAKING RATE 2 BPM @ 500*
204					Pump 5 BBL OIL
			20	2	START CNT 75 SKS com. NONT
216					FINISH CNT
					START 4 BBL OIL Flush Then
					SALT WATER.
224		600*		1	10 1/2 BBL out 600* 1-BPM
230		1700*	16	3/4	16 BBL out
231		2000*	17 3/4		17 3/4 BBL out 2000* Shut Down
233		2000*			Bump sq.
238		2000*	18		Bump sq. 18 BBL Total out
242		2000*			Bump sq. STAGE
246		2000*			Bump sq.
254		2000*			Bump sq.
301		2000*			Bump sq.
306		0*			Release PSI Drubbles Back.
308		2000*			Bump sq.
310		0*			Release PSI OK Release Tool & Rev
	300*		25	2 1/2	out Pump 25 BBLs clean
345			25	3	Run Tbg below Perf + Rev. out Again. Clean
400		300*			PKR @ 3452- PSI 500* Shut In. Job complete

THANKS, Kevin Allen Steve Yourd
Taylor Printing, Inc. 620-672-3656



BASICSM
ENERGY SERVICES
PRESSURE PUMPING & WIRELINE

10244 NE Hwy. 61
P.O. Box 8613
Pratt, Kansas 67124
Phone 620-672-1201

FIELD SERVICE TICKET
1718 06783 A

DATE _____ TICKET NO. _____

DATE OF JOB 8-14-12	DISTRICT PRATT KS	NEW WELL <input checked="" type="checkbox"/>	OLD WELL <input type="checkbox"/>	PROD <input type="checkbox"/>	INJ <input type="checkbox"/>	WDW <input type="checkbox"/>	CUSTOMER ORDER NO.:		
CUSTOMER F. G. HOLL	LEASE OLIVANAN	1-14		WELL NO.					
ADDRESS	COUNTY CARTON	STATE KS							
CITY	STATE	SERVICE CREW Sullivan, Wright, Lokene							
AUTHORIZED BY	JOB TYPE: C/W Squeeze								
EQUIPMENT#	HRS	EQUIPMENT#	HRS	EQUIPMENT#	HRS	TRUCK CALLED	DATE	AM	TIME
33703-20970	45 m					8-14-12	8:20		
19826-19860	45 m							AM	10:30
37900								AM	12:10
								AM	2:10
								AM	2:30
						MILES FROM STATION TO WELL	55		

CONTRACT CONDITIONS: (This contract must be signed before the job is commenced or merchandise is delivered).

The undersigned is authorized to execute this contract as an agent of the customer. As such, the undersigned agrees and acknowledges that this contract for services, materials, products, and/or supplies includes all of and only those terms and conditions appearing on the front and back of this document. No additional or substitute terms and/or conditions shall become a part of this contract without the written consent of an officer of Basic Energy Services LP.

SIGNED: *Robert Long*
(WELL OWNER, OPERATOR, CONTRACTOR OR AGENT)

ITEM/PRICE REF. NO.	MATERIAL, EQUIPMENT AND SERVICES USED	UNIT	QUANTITY	UNIT PRICE	\$ AMOUNT
CP 100c	Common cut	SK	25		
CP 100	Common cut	CF	25		
CC 105	C-41 Adhesives	lb	6		
CC 112	Cont Fluids Reduc	lb	8		
CC 129	FLA-322 Fluid Loss	lb	20		
E 100	pick up	m'	55		
E 101	Heavy Fluid	m'	40		
E 113	Bulk Adhesives	TM	132		
CE 204	Depth Charge	SA	1		
CE 240	Blowing - 1/2 in	SK	50		
S 003	Servin Separator	SA	1		
CE 500	C/W Squeeze material	SA	1		

SUB TOTAL

CHEMICAL / ACID DATA:			

SERVICE & EQUIPMENT	%TAX ON \$
MATERIALS	%TAX ON \$

Thank you TOTAL

SERVICE REPRESENTATIVE *Robert Long*

THE ABOVE MATERIAL AND SERVICE ORDERED BY CUSTOMER AND RECEIVED BY: *Robert Long*

(WELL OWNER OPERATOR CONTRACTOR OR AGENT)

FIELD SERVICE ORDER NO.

BASIC

energy services, L.P.

TREATMENT REPORT

Customer <i>F. P. HALL</i>	Lease No.	Date <i>08-14-12</i>
Lease <i>DUNAVAN</i>	Well # <i>1-14</i>	
Field Order # <i>6783</i>	Station <i>PORT KS</i>	Casing <i>2 1/2</i>
Type Job <i>CNW Square</i>	Formation	Depth <i>3614</i>
		County <i>BARREN</i>
		State <i>KS</i>
		Legal Description <i>14-20-15</i>

PIPE DATA		PERFORATING DATA		FLUID USED		TREATMENT RESUME		
Casing Size	Tubing Size	Shots/Ft		Acid	RATE	PRESS	ISIP	
<i>5 1/2</i>	<i>2 1/2</i>							
Depth	Depth	From	To	Pre Pad	Max		5 Miq.	
	<i>3614</i>	<i>3684</i>	<i>3697</i>					
Volume	Volume	From	To	Pad	Min		10 Min.	
	<i>30.9</i>							
Max Press	Max Press	From	To	Frac	Avg		15 Min.	
Well Connection	Annulus Vol.	From	To		HHP Used		Annulus Pressure	
	<i>53</i>							
Plug Depth	Packer Depth	From	To	Flush	Gas Volume		Total Load	
	<i>3614</i>							

Customer Representative	Station Manager <i>DAVE SEED</i>	Treater <i>David Johnson</i>
Service Units <i>27900 23708 20920 19826 19860</i>		
Driver Names <i>Sullivan Wright LARANCE</i>		

Time	Casing Pressure	Tubing Pressure	Bbls. Pumped	Rate	Service Log
<i>10:30</i>					<i>on loc safety meeting</i>
<i>12:10</i>					<i>LOAD BACK SIDE</i>
	<i>500</i>		<i>12</i>		<i>LOAD PS:</i>
					<i>back tight R. 4510</i>
<i>12:30</i>	<i>500</i>				<i>R. PS:</i>
<i>12:30</i>					<i>LOAD TUBE</i>
			<i>4</i>		<i>LOAD</i>
		<i>700</i>	<i>5</i>	<i>1</i>	<i>Set injection RATE</i>
<i>12:35</i>			<i>5</i>	<i>1</i>	<i>Set max. conc 25% fluid loss</i>
					<i>max 25% fluid loss</i>
<i>12:50</i>			<i>6</i>		<i>shut down cont mixed with life, prof</i>
<i>12:52</i>		<i>0</i>		<i>1</i>	<i>at air</i>
<i>1:05</i>		<i>800</i>	<i>6</i>		
		<i>2,000</i>	<i>17</i>		<i>shut down load 1800</i>
<i>1:17</i>		<i>2,000</i>	<i>17 1/2</i>		<i>PS back 25% out in ports</i>
<i>1:27</i>					<i>Reverse PS ✓ 5500 per D 4100 26</i>
<i>1:30</i>	<i>400</i>	<i>400</i>		<i>2</i>	<i>Reverse out 2000 conc.</i>
<i>1:50</i>			<i>35</i>		<i>shut down</i>
<i>2:10</i>		<i>500</i>			<i>Pull to 500 Min) PS: 500</i>
					<i>JOB COMPLETE</i>
					<i>Thank you</i>