

Company Jason Oil  
Well Wilson #2  
Field Hall-Gurney  
County Russell  
State Kansas

Company Jason Oil  
Well Wilson #2  
Field Hall-Gurney  
County Russell State Kansas

Location: 2150' FSL & 2040' FWL  
SEC 29 TWP 143S RGE 12W  
API #: 15 167 23717  
Permanent Datum Ground Level Elevation 1663'  
Log Measured From KB 7' AGL  
Drilling Measured From KB  
Other Services  
Elevation  
K.B. 1670'  
D.F. 1669'  
G.L. 1663'

Date	5-13-11
Run Number	One
Depth Driller	3220'
Depth Logger	3221'
Bottom Logged Interval	3119'
Top Log Interval	540'
Casing Driller	562'
Casing Logger	560'
Bit Size	7 7/8"
Type Fluid in Hole	Chemical
Density / Viscosity	9.2/54
pH / Fluid Loss	9.5/8.0
Source of Sample	Pit
Rm @ Meas. Temp	4.7@65deg
Rmf @ Meas. Temp	3.7@65deg
Rmc @ Meas. Temp	6.0@65deg
Source of Rmf / Rmc	Measured
Rm @ BHT	2.9@105deg
Time Circulation Stopped	4:30 a.m.
Time Logger on Bottom	7:00 a.m.
Maximum Recorded Temperature	105
Equipment Number	T045
Location	Hays
Recorded By	L. Smith
Witnessed By	Mr. Jeff Lawler

<<< Fold Here >>>

All interpretations are opinions based on inferences from electrical or other measurements and we cannot and do not guarantee the accuracy or correctness of any interpretation, and we shall not, except in the case of gross or willful negligence on our part, be liable or responsible for any loss, costs, damages, or expenses incurred or sustained by anyone resulting from any interpretation made by any of our officers, agents or employees. These interpretations are also subject to our general terms and conditions set out in our current Price Schedule.

**Comments**

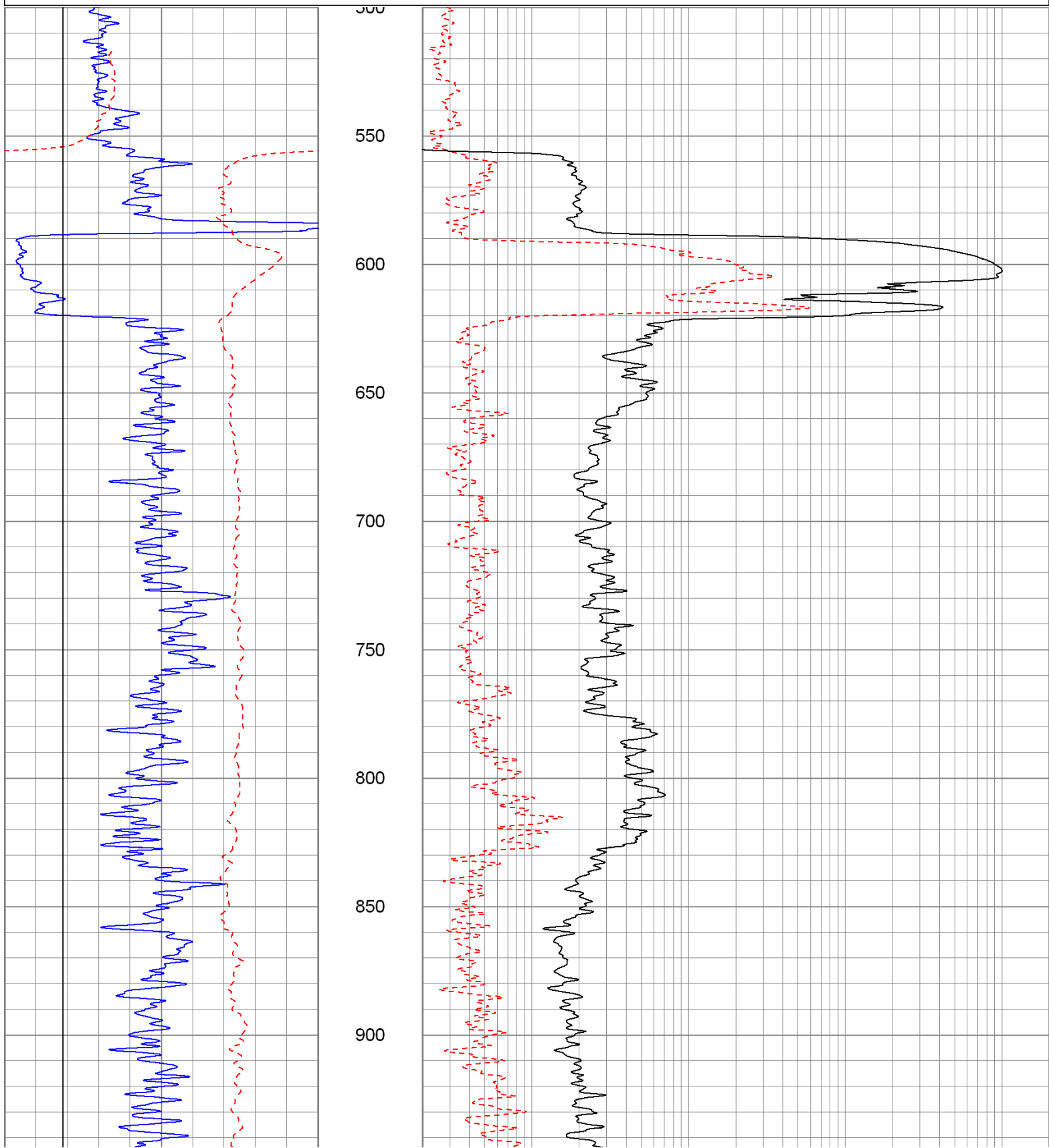
Bunker Hill S to stop sign, E1, N1, NE @ tank battery.

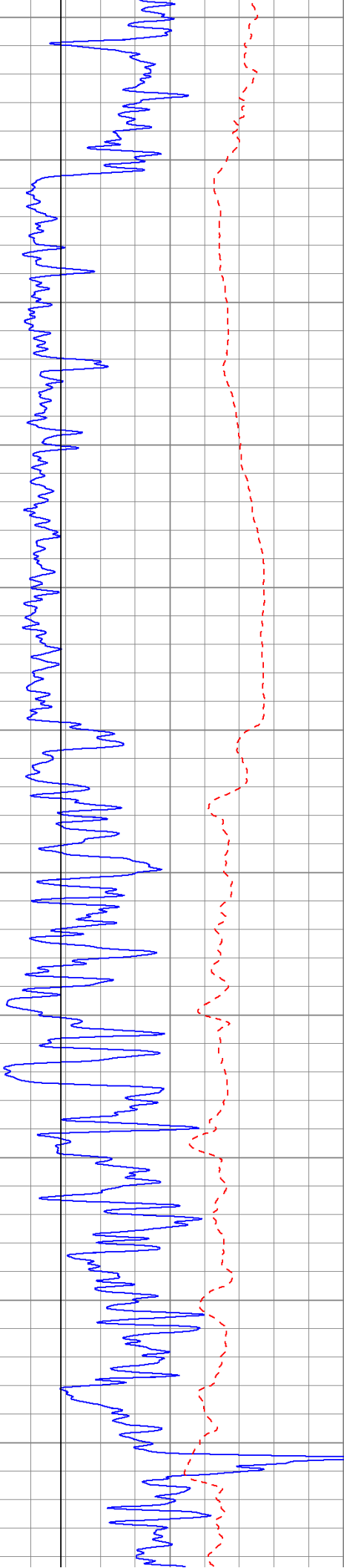
Thank you for using The Perforators LLC  
Hays, KS 785-621-4604

Database File: jowilson#2.db  
 Dataset Pathname: pass2  
 Presentation Format: krglin  
 Dataset Creation: Fri May 13 07:19:32 2011 by Log Open-Cased 100827  
 Charted by: Depth in Feet scaled 1:600

0	GR (GAPI)	150
-100	SP (mV)	100
6	BOREID (in)	16

100	NEU (NAPI)	950
0.2	RLL3 (Ohm-m)	2000





950

1000

1050

1100

1150

1200

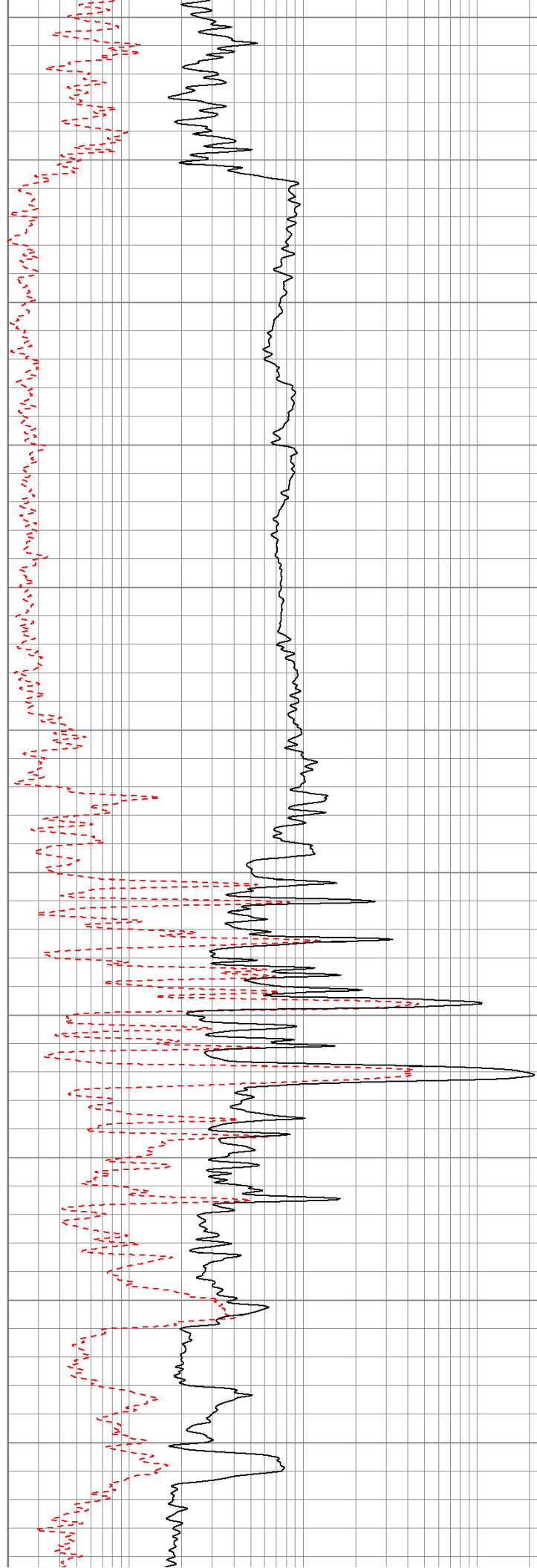
1250

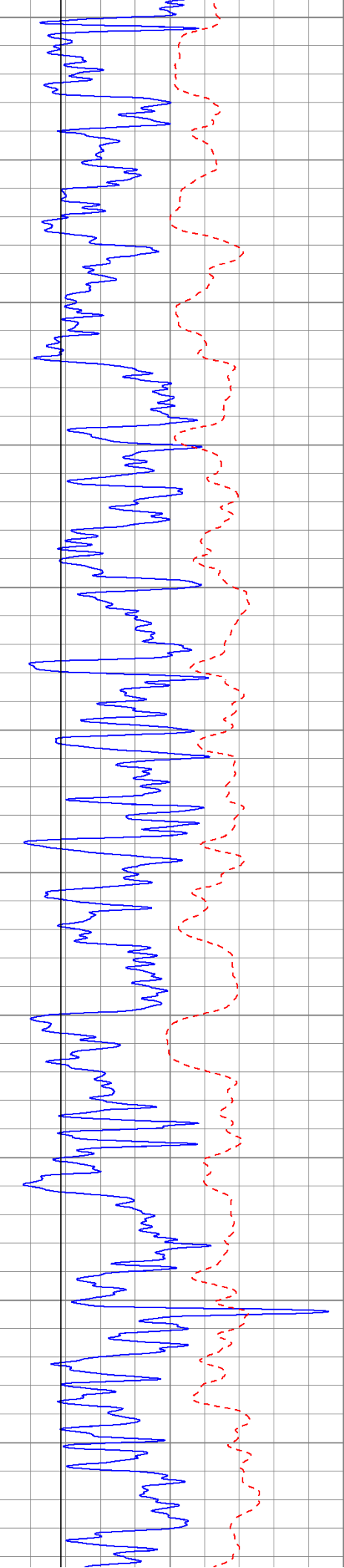
1300

1350

1400

1450





1500

1550

1600

1650

1700

1750

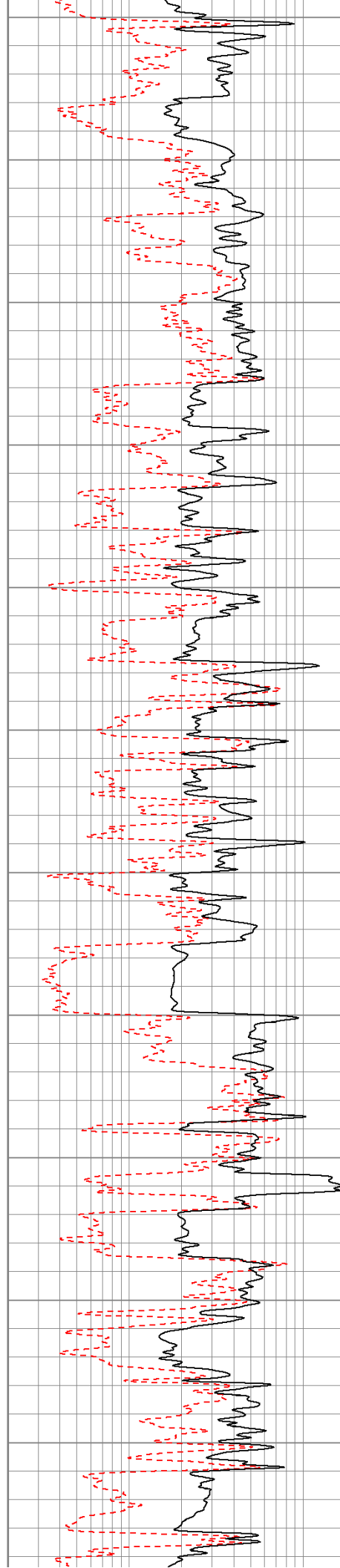
1800

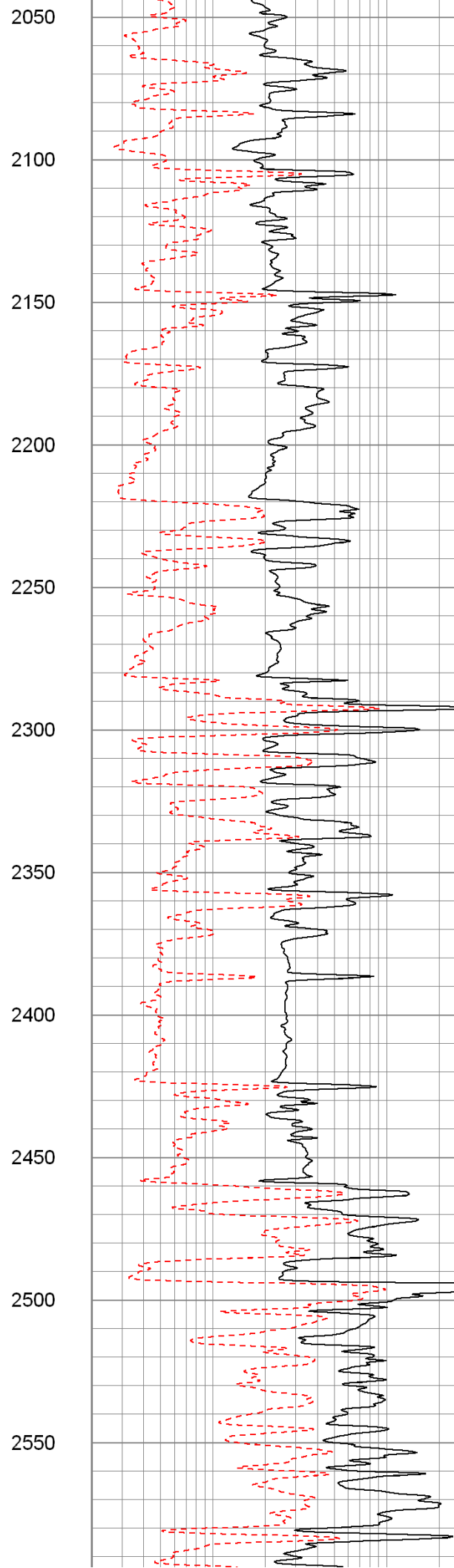
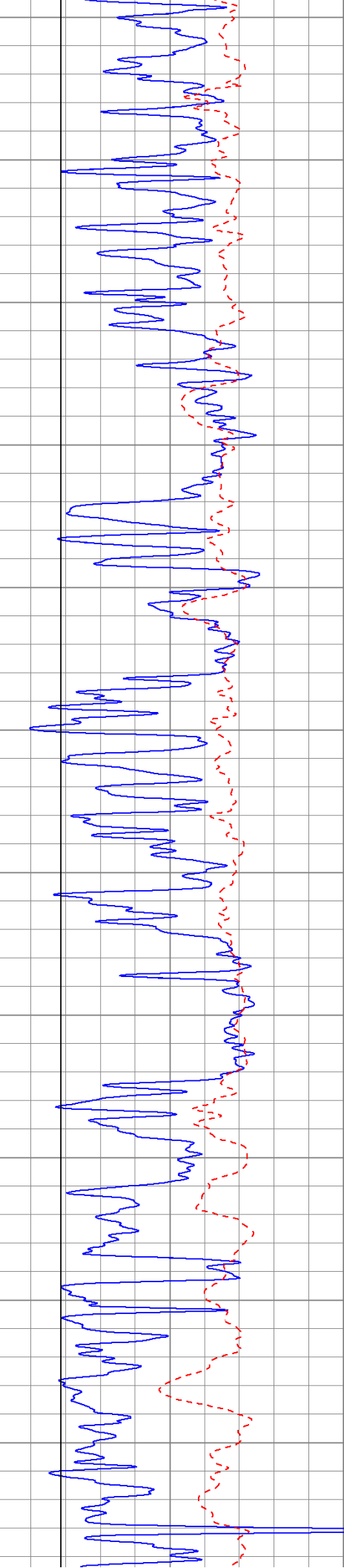
1850

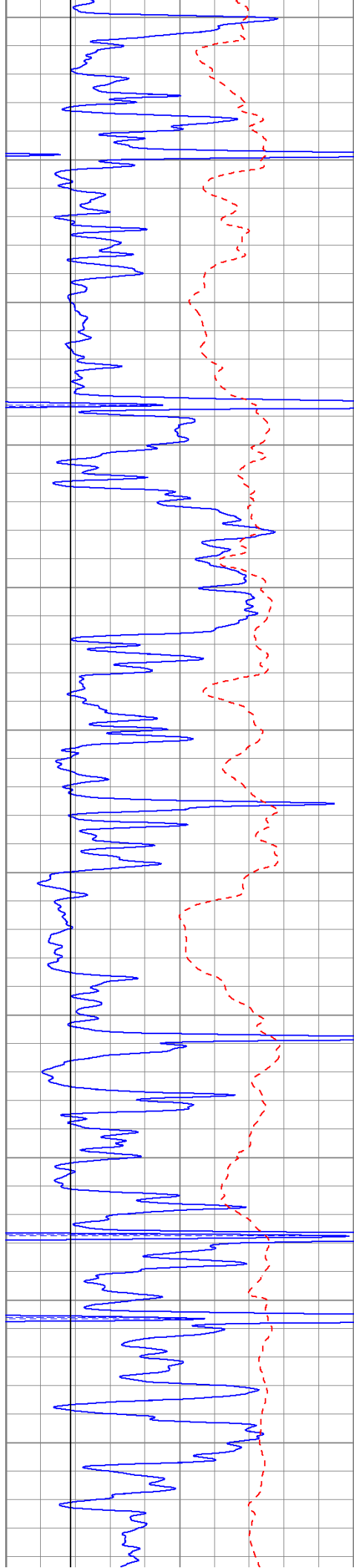
1900

1950

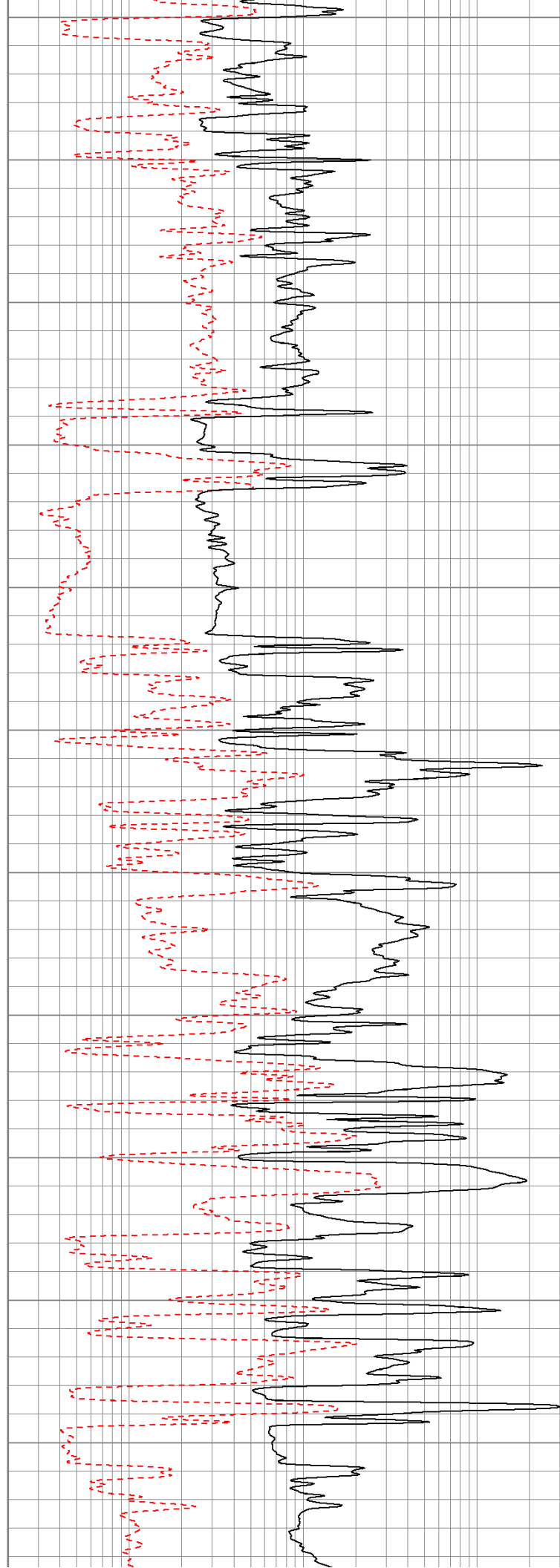
2000

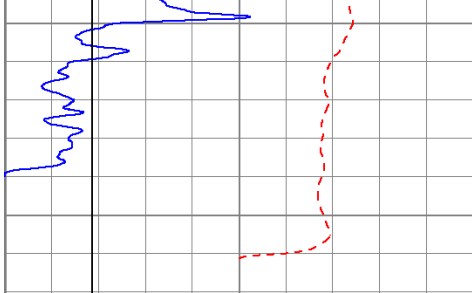




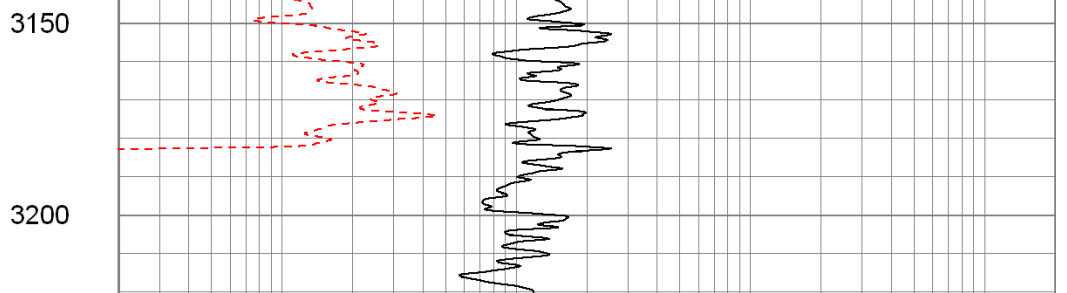


2600  
2650  
2700  
2750  
2800  
2850  
2900  
2950  
3000  
3050  
3100





0	GR (GAPI)	150
-100	SP (mV)	100
6	BOREID (in)	16



100	NEU (NAPI)	950
0.2	RLL3 (Ohm-m)	2000

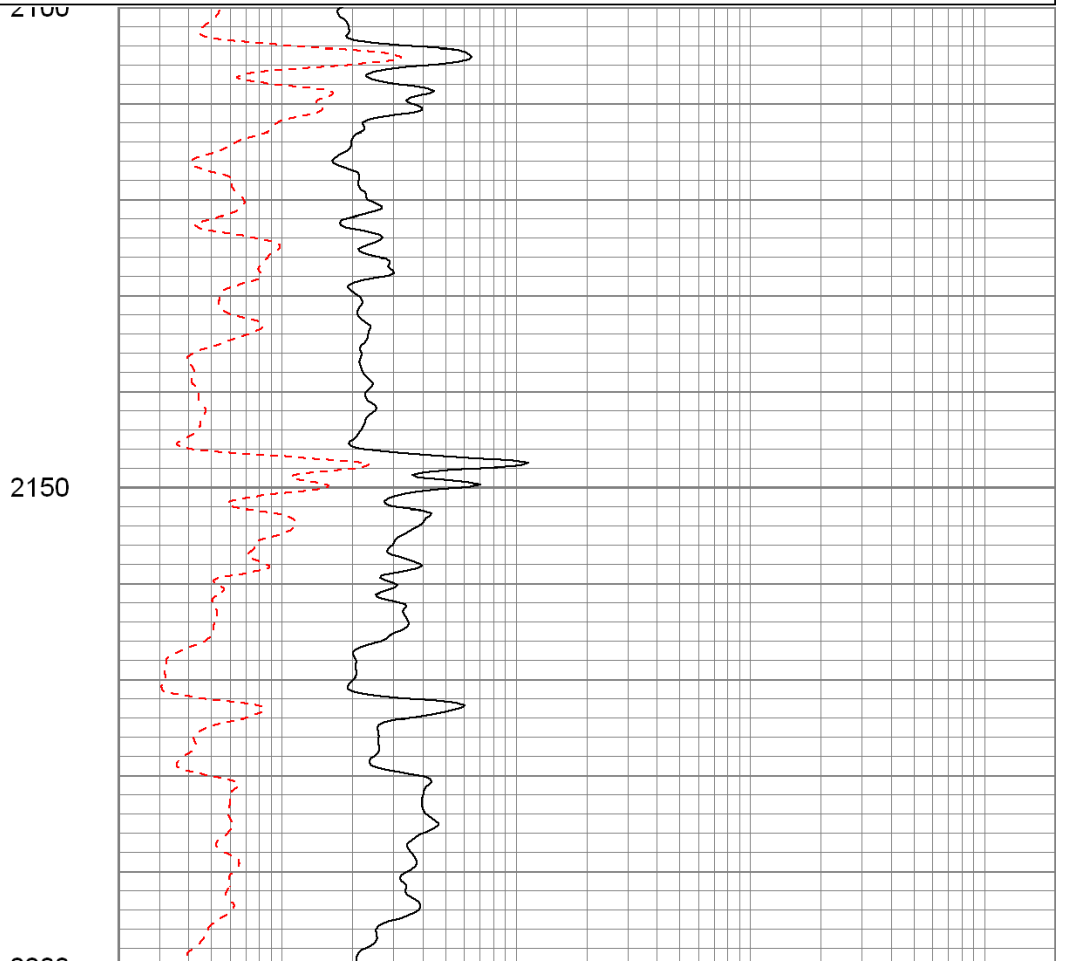
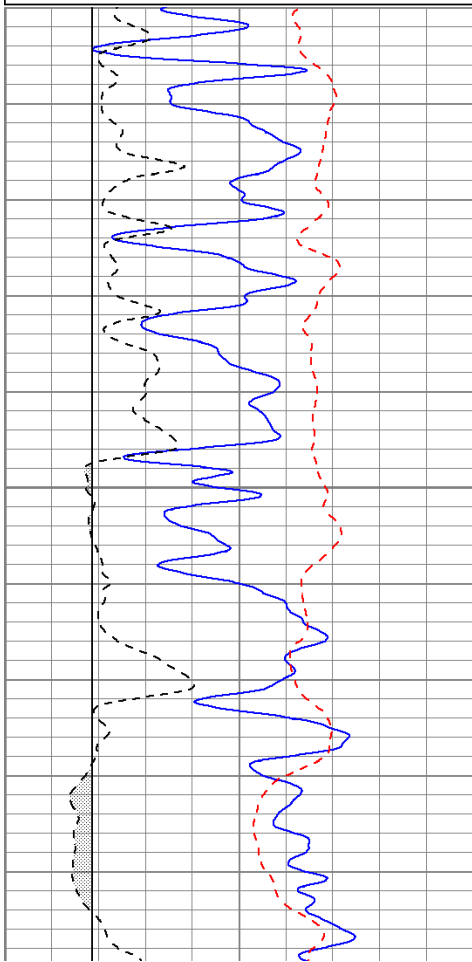


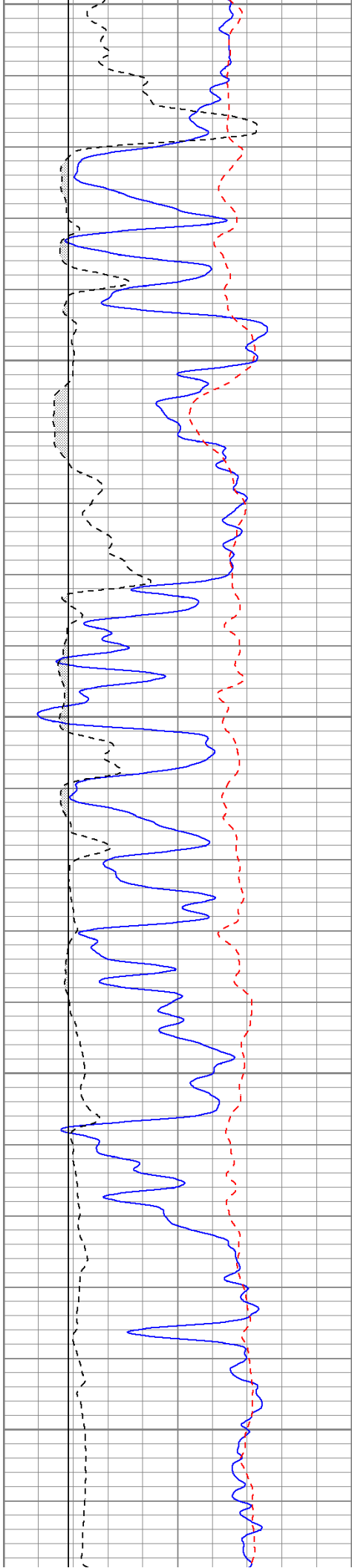
# Main Pass

Database File: jowilson#2.db  
 Dataset Pathname: pass2  
 Presentation Format: krg  
 Dataset Creation: Fri May 13 07:19:32 2011 by Log Open-Cased 100827  
 Charted by: Depth in Feet scaled 1:240

0	GR (GAPI)	150
-100	SP (mV)	100
6	DCAL (in)	16
6	BOREID (in)	16

100	NEU (NAPI)	950
0.2	RLL3 (Ohm-m)	2000





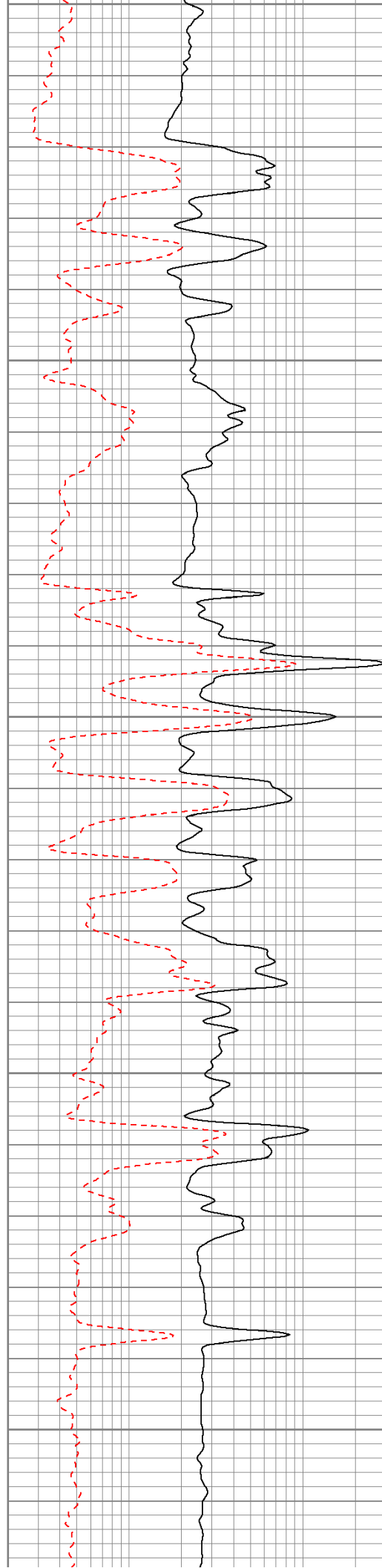
2200

2250

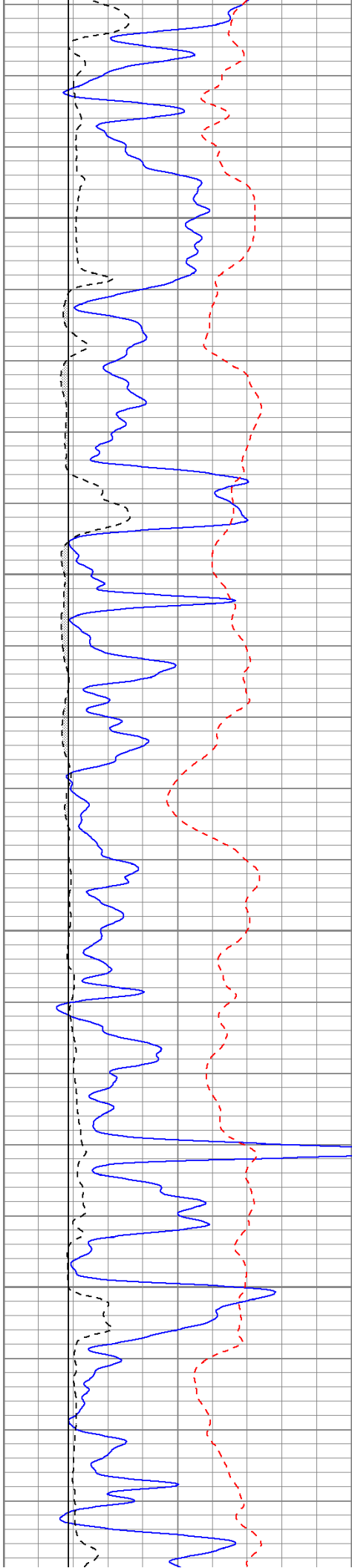
2300

2350

2400





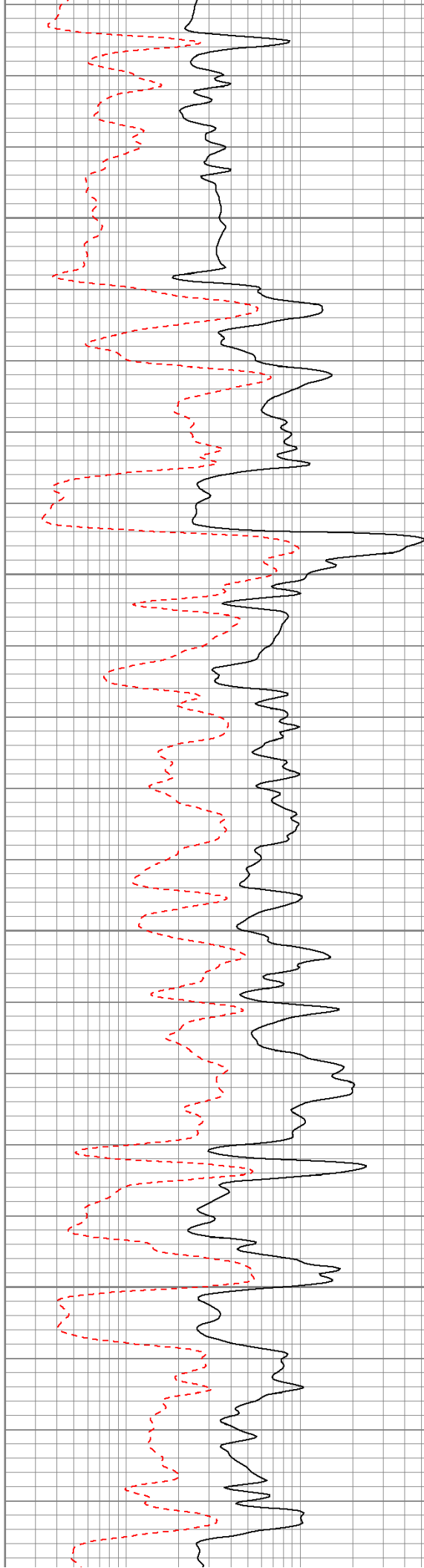


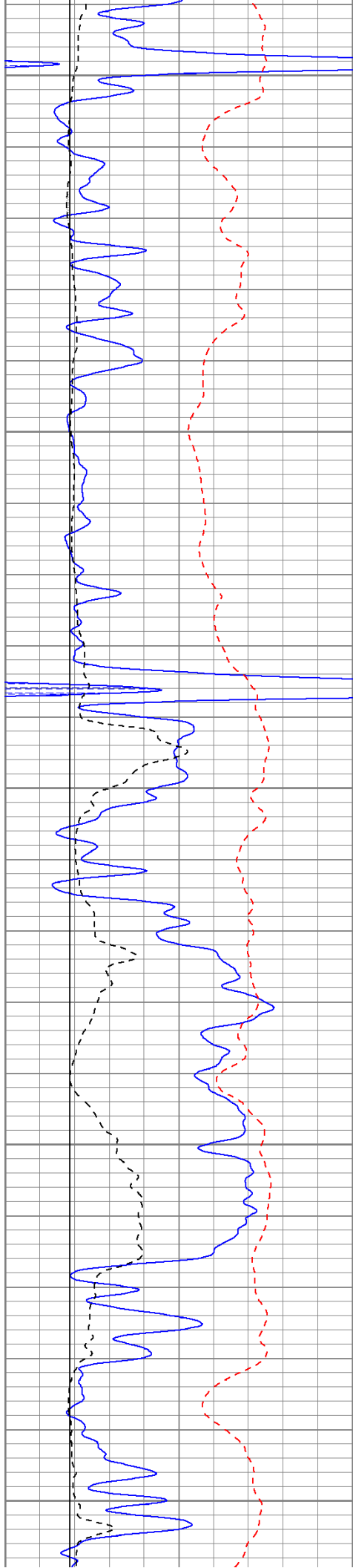
2450

2500

2550

2600





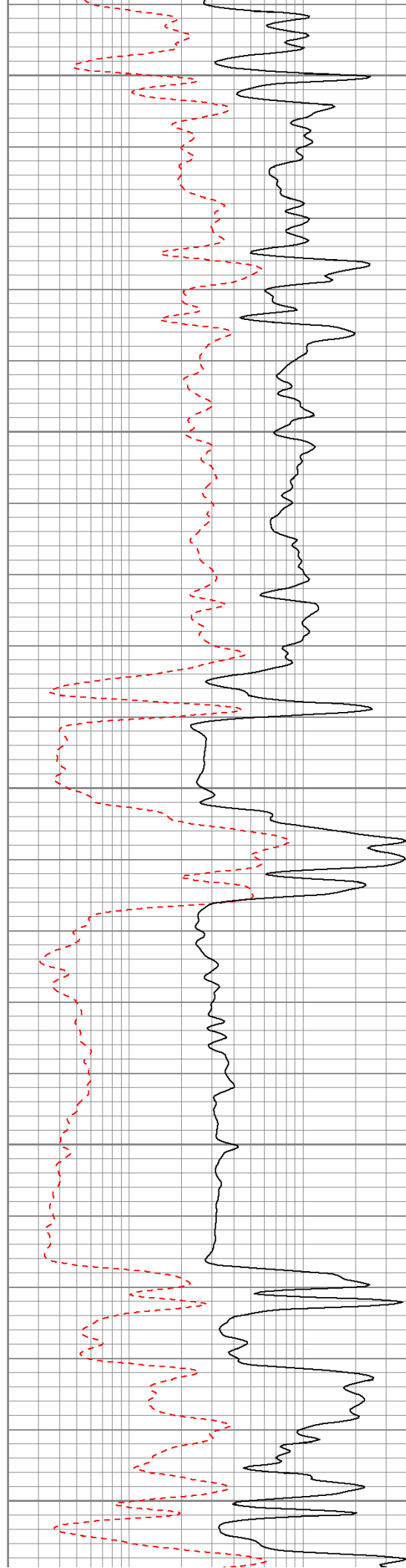
2650

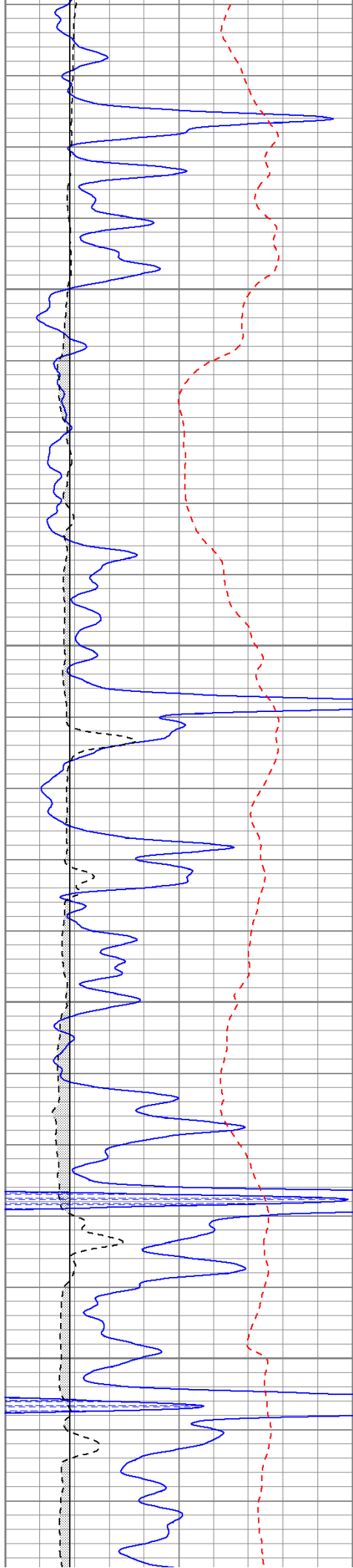
2700

2750

2800

2850



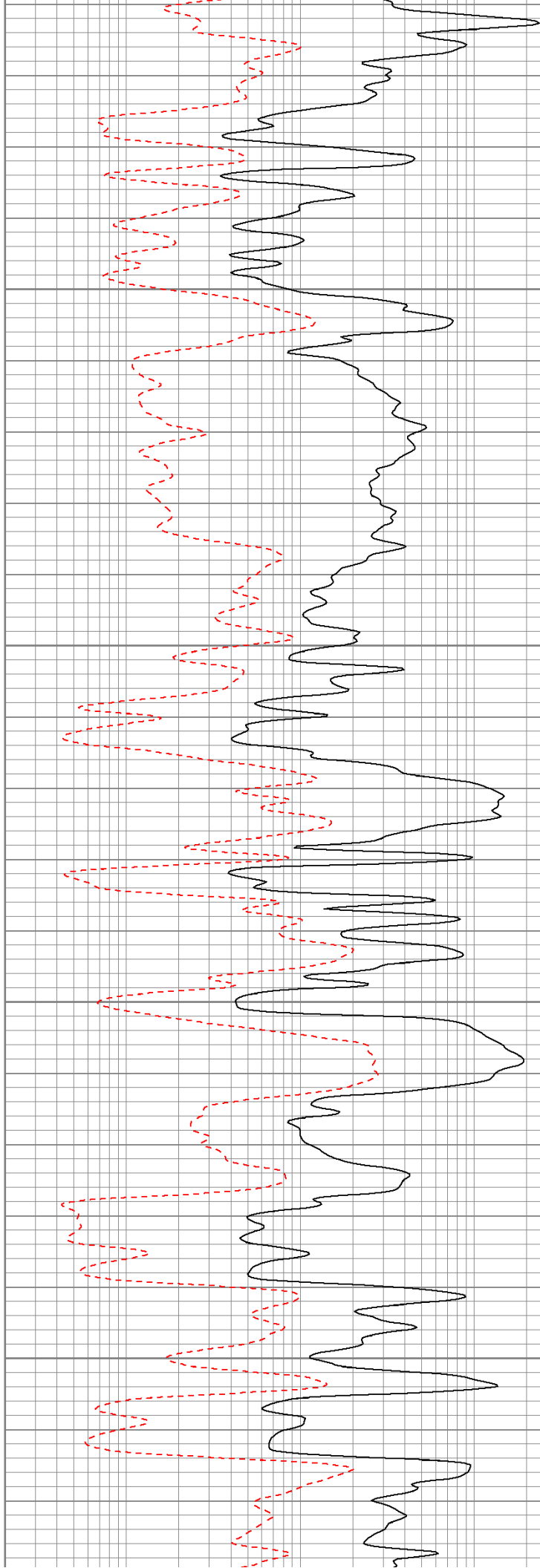


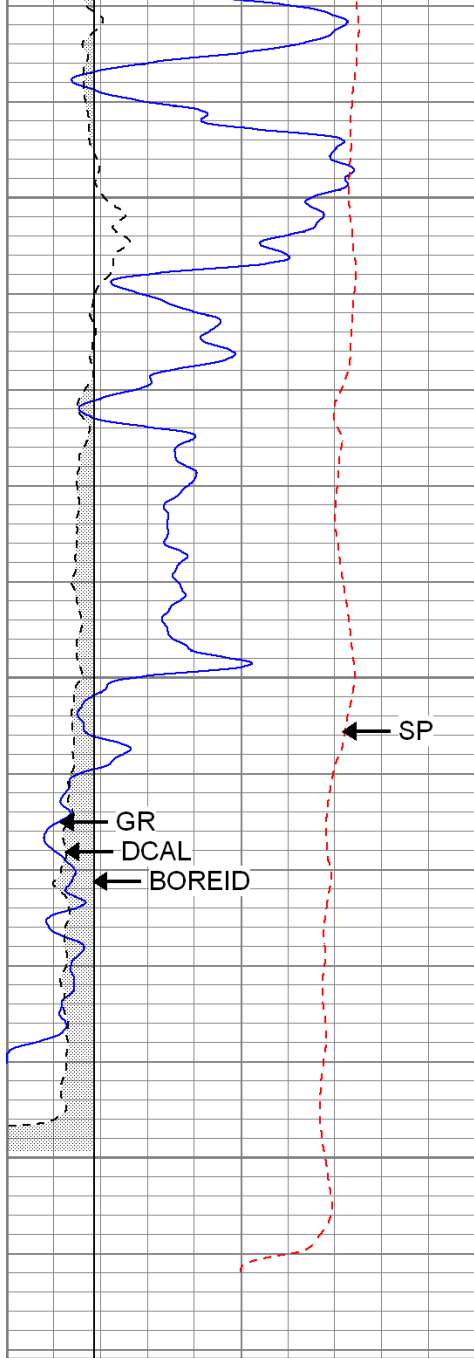
2900

2950

3000

3050





0	GR (GAPI)	150
-100	SP (mV)	100
6	DCAL (in)	16
6	BOREID (in)	16

3100

3150

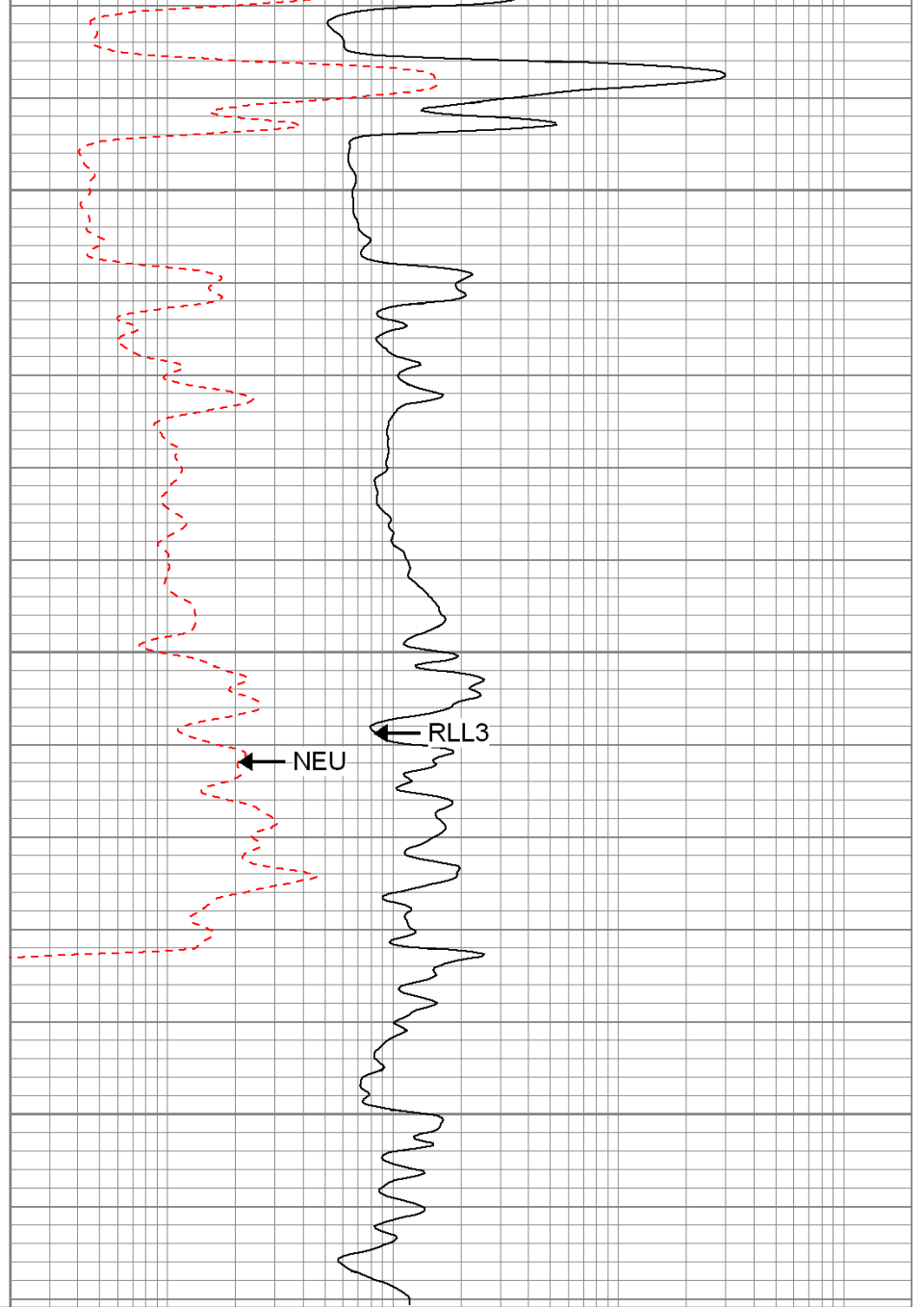
3200

← SP

← GR

← DCAL

← BOREID



100	NEU (NAPI)	950
0.2	RLL3 (Ohm-m)	2000

← NEU

← RLL3



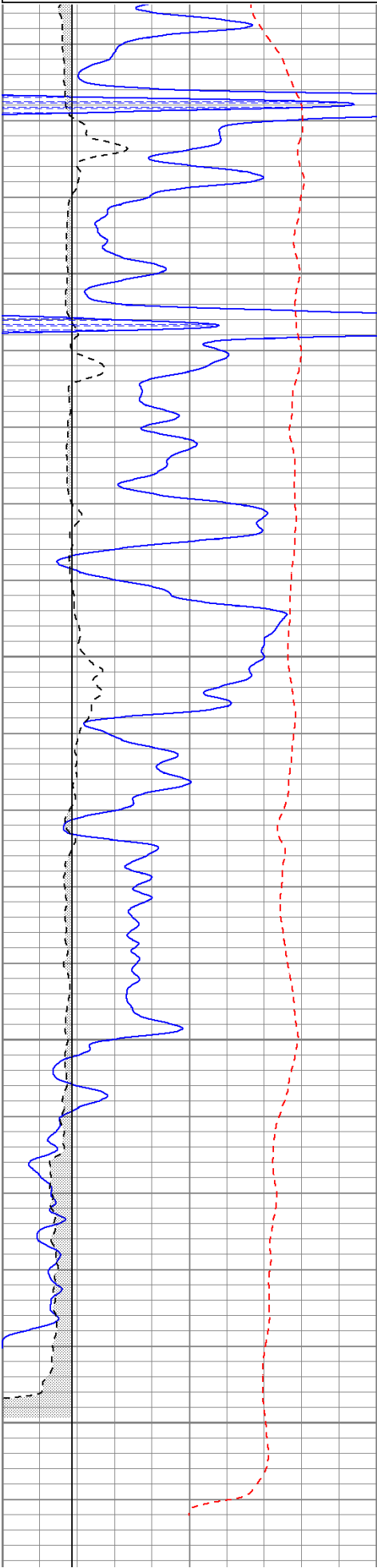
# Repeat Pass

Database File: jowilson#2.db  
 Dataset Pathname: pass1  
 Presentation Format: krg  
 Dataset Creation: Fri May 13 07:07:38 2011 by Log Open-Cased 100827  
 Charted by: Depth in Feet scaled 1:240

0	GR (GAPI)	150
-100	SP (mV)	100

100	NEU (NAPI)	950
0.2	RLL3 (Ohm-m)	2000

6	DCAL (in)	16
6	BOREID (in)	16

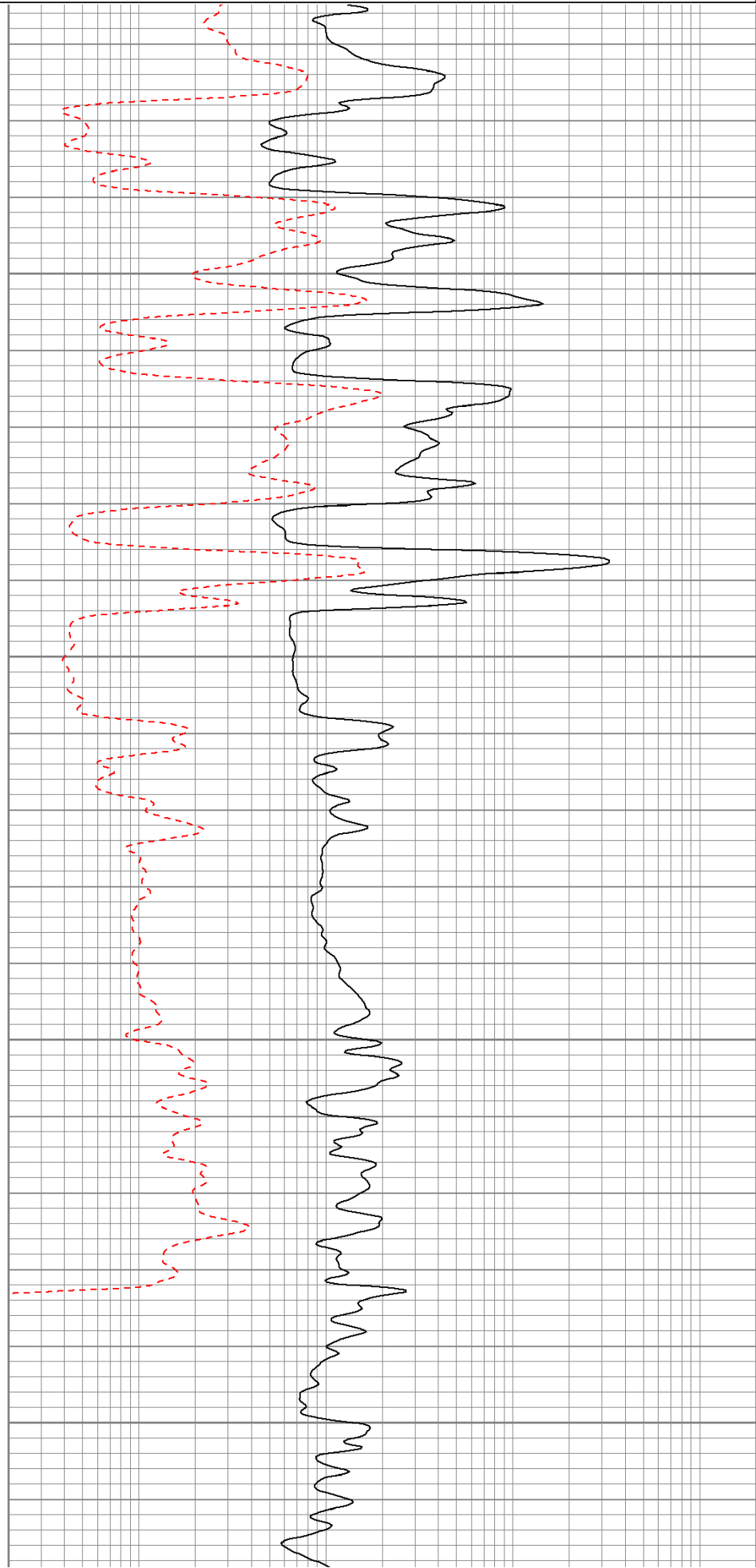


3050

3100

3150

3200



0	GR (GAPI)	150	100	NEU (NAPI)	950
-100	SP (mV)	100	0.2	RLL3 (Ohm-m)	2000
6	DCAL (in)	16			
6	BOREID (in)	16			

### Calibration Report

Database File: jowilson#2.db  
Dataset Pathname: pass1  
Dataset Creation: Fri May 13 07:07:38 2011 by Log Open-Cased 100827

### Dual Induction Calibration Report

Serial-Model: 080522-Probe  
Surface Cal Performed: Fri Apr 29 21:50:46 2011  
Downhole Cal Performed: Fri Apr 29 21:50:49 2011  
After Survey Verification Performed: Tue Mar 15 11:48:43 2011

#### Surface Calibration

Loop:	Readings			References			Results	
	Air	Loop		Air	Loop		m	b
Deep	-0.000	0.638	V	0.000	400.000	mmho/m	626.857	0.275
Medium	0.001	0.741	V	0.000	464.000	mmho/m	626.953	-0.823
Internal:	Zero	Cal		Zero	Cal		m	b
Deep	0.000	0.638	V	0.000	400.000	mmho/m	627.013	-0.291
Medium	0.001	0.741	V	0.000	464.000	mmho/m	627.190	-0.915

#### Downhole Calibration

	Readings			References			Results	
	Zero	Cal		Zero	Cal		m'	b'
Deep	0.096	400.608	mmho/m	0.566	400.467	mmho/m	0.998	0.471
Medium	-0.069	464.142	mmho/m	0.092	463.916	mmho/m	0.999	0.161
LL3		7.358	V		750.000	Ohm-m		
		0.001	V		12.000	Ohm-m		
		-7.218	V		3745.000	mmho-m		

### Compensated Density Calibration Report

Serial-Model: 2501DHT-DHT  
Source / Verifier: /  
Master Calibration Performed: Thu Apr 21 07:35:50 2011

#### Master Calibration

	Density		Far Detector	Near Detector	
Magnesium	1.750	g/cc	733.13	288.65	cps
Aluminum	2.670	g/cc	138.45	188.57	cps
Spine Angle = 75.67			Density/Spine Ratio = 0.535		
	Size		Reading		
Small Ring	7.70	in	6064.22		
Large Ring	14.00	in	10296.80		

### Gamma Ray Calibration Report

Serial Number: 2000  
 Tool Model: P2000  
 Performed: Mon Apr 11 04:05:46 2011

Calibrator Value: 1.0 GAPI

Background Reading: 0.0 cps  
 Calibrator Reading: 1.0 cps

Sensitivity: 0.2200 GAPI/cps

Neutron Calibration Report

Serial Number: 5108  
 Tool Model: PROBE  
 Performed: Mon Mar 28 13:28:28 2011

Calibrator Value: 1 NAPI

Calibrator Reading: 1 cps

Sensitivity: 1 NAPI/cps

Sensor	Offset (ft)	Schematic	Description	Len (ft)	OD (in)	Wt (lb)	
NEU	37.96		None	0.75	1.50	5.00	
			NEU-PROBE (5108) Probe	4.92	3.63	85.00	
GR	32.57		GR-P2000 (2000)	3.67	3.25	40.00	
			CDL-DHT (2501DHT) Digital High Temp CDL Tool	9.69	4.00	201.00	
LSD	23.78						
DCAL	23.49						
SSD	23.24						
HEADVOLT	21.47						
CILD	10.60			DIL-Probe (080522) Probe Dual Induction	21.47	4.00	345.00
SP	10.60						
CILM	6.89						
RLL3	1.70						

Dataset: jowilson#2.db: field/well/run1/pass1  
 Total Length: 40.49 ft  
 Total Weight: 676.00 lb  
 O.D. 4.00 in