

LITHOLOGY STRIP LOG

WellSight Systems
Scale 1:240 (5"=100') Imperial
Measured Depth Log

Well Name: Cobalt Energy, LLC Maier 'A' #1-18 D&A
 Location: Approx S2 N2 NW Section 18-T20S-R21W
 License Number: API: 15-135-25447 Region: Ness Co, KS
 Spud Date: Sept 17, 2012 Drilling Completed: Sept 24, 2012
 Surface Coordinates: 969' FNL & 1334' FWL Section 18-T20S-R21W

Bottom Hole Coordinates: 2204 K.B. Elevation (ft): 2213
 Ground Elevation (ft): 3600 To: 4378 Total Depth (ft): 4378
 Logged Interval (ft): Mississippian, RTD 4378 (-2165), LTD 4372 (-2159).
 Type of Drilling Fluid: Chemical

OPERATOR

Company: Cobalt Energy, LLC
 Address: PO Box 8037
 Wichita, Kansas 67208

GEOLOGIST

Name: Mikeal K. Maune
 Company: Consulting Petroleum Geologist - Kansas Licensed No. 210
 Address: Wichita, Kansas
 Office: 316-722-8173

COMMENTS

Surface Casing: 8 5/8" set @ 225' w/135 sx common, 2% cc, 3% gel. Cement circulated.
 Production Casing: D&A
 Deviation Surveys: 3/4 @ 225', 3/4 @ 4290',
 Pipe Strap @ 4290'. Strap 4293.12'. Board 4290'. Strap 3.12 ft long to Board.
 Southwind Drilling, Inc. Rig #2 Bit Record:
 #1 12 1/4" in @ GL, out @ 225'
 #2 7 7/8" in @ 225', out @ 4378'.
 Gas Detector: None
 Mud System: Mud-CO/Service Mud
 DSTs: Trilobite Testing Inc.
 OH Logs: Pioneer Energy Services RAG Log
 OH Logging complete 9/25/2012

Note: The Maier "A" #1-18 OH Log was correlated with the rotary drilling time on this report. The OH Log depths are approximately 5 to 6 feet high to the rotary drilling depth measurements. The Gamma Ray curve on this report has been adjusted downhole 6 feet to correlate with the rotary drilling time depths.

OH Log formation tops: Anhydrite 1414 (+799), Base Anhydrite 1448 (+763), Heebner 3719 (-1506), Lansing 3762 (-1549), Stark 4045 (-1832), BKC 4099 (-1886), Pawnee 4197 (-1984), Fort Scott 4267 (-2054), Cherokee 4291 (-2078), Conglomerate 4325 (-2112), Miss Osage 4367 (-2154), LTD 4372 (-2159).

DSTs

DST #1 (Fort Scott) 4276-4290/30-60-60-90. 1st Op: WB 1/8 inch blow. 2nd Op: WB 1/2 inch blow. Recover: 10' Oil spotted Mud. IH 2169#, IFP 15-17#, ISIP 378# building, FFP 12-19#, FSIP 141# building, FH 2081#, BHT 113 F.

DST #2 (Osage) 4310-4378/30-60-60-90. 1st Op: 7 1/4 inch blow. 2nd Op: 7 1/2 inch blow. Recover: 80' Oil spt SWCM (10% Wtr, 90% M), 120' MCW (60% Wtr, 40% M). Recovery Chl 23,000. RW .37 @ 55 F. System Chl 7,000. IH 2169#, IFP 25-62#, ISIP 1,162# building, FFP 68-117#, FSIP 1,048# building, FH 2065#, BHT 117 F.

ROCK TYPES

Anhy	Congl	Lmst	Black sh
Brec	Sdy dolo	Mrst	Gry sh
Cht	Dol	Salt	Shale
Clyst	Gyp	Shst	Shyslst
Coal	Sdy lmst	Ss	Stysh

ACCESSORIES

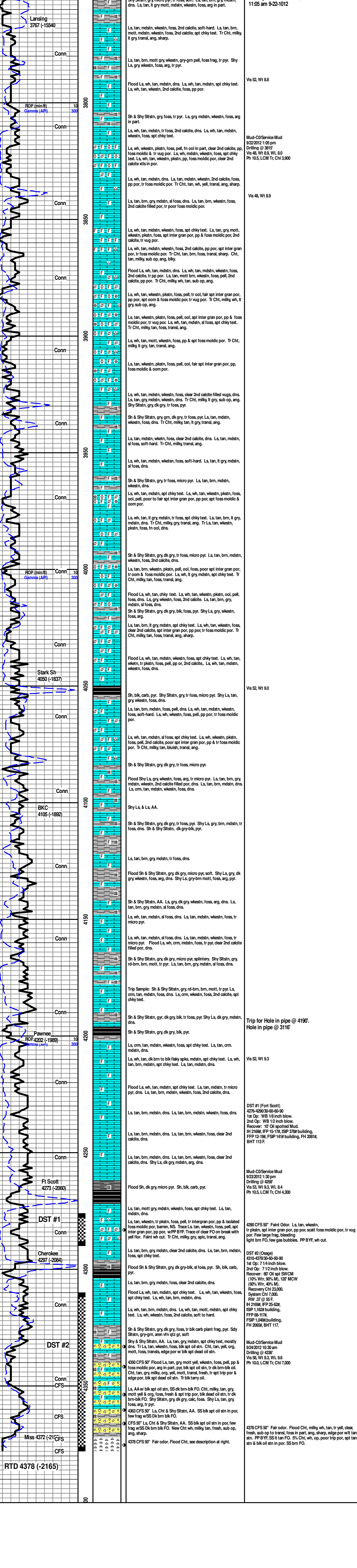
MINERAL	Chlorite	Pelec	Grysh
Anhy	Dol	Pelloidal	Gryslt
Arg	Sand	Pisolite	Lms
Bent	Silt	Plant	Sandylms
Bit	FOSSIL	Strom	Sh
Brefracg	Algae	Fum	Siltstn
Calc	Amph	Oomoldic	
Chtdk	Belm		
Chtlt	Bioclst		
Dol	Brach		
Ferrpel	Bryozoa		
Ferr	Cephal		
Glau	Coral		
Gyp	Crin		
Marl	Echin		
Nodule	Fish		
Phos	Foram		
Pyr	Fossil		
Salt	Gault		
Sandy	Oolite		
Silt	Ostra		

STRINGER

Anhy	Grysh
Arg	Gryslt
Bent	Lms
Coal	Sandylms
Dol	Sh
Gyp	Siltstn
Ls	
Mrst	
Siltstrg	
Sstrg	
Carbsh	
Clystn	
Dol	

TEXTURE

Boundst
Chalky
Cryxln
Earthy
Finxln
Grainst
Lithogr
Microxln
Mudst
Packst
Wackest



Geologist on Location @ 3756'
 11:05 am 9-22-1012

Vis 52, WI 88

Vis 48, WI 89

Vis 52, WI 80

Vis 52, WI 83

DST #1 (Fort Scott)
 4276-4290/30-60-60-90
 1st Op: WB 1/8 inch blow.
 2nd Op: WB 1/2 inch blow.
 Recover: 10' Oil spotted Mud.
 IH 2169#, IFP 15-17#, ISIP 378# building,
 FFP 12-19#, FSIP 141# building, FH 2081#,
 BHT 113 F.

Mud-CO/Service Mud
 9/23/2012 1:30 pm
 Drilling @ 4290'
 Vis 85, WI 83, WL 8.0
 Ph 10.5, LCM 7x Chl 3,800

Vis 48, WI 89

Mud-CO/Service Mud
 9/23/2012 1:30 pm
 Drilling @ 4290'
 Vis 85, WI 83, WL 8.0
 Ph 10.5, LCM 7x Chl 3,800

4290 CFS 57' Faint Odor. Ls, tan, weestn, tr plstn, apt inter gran por, pp, poc scant foss moldic por, tr vug por. Few large frag, bleeding light brn FO, few gas bubbles. PP BYE, wh out.

DST #2 (Osage)
 4310-4378/30-60-60-90
 1st Op: 7 1/4 inch blow.
 2nd Op: 7 1/2 inch blow.
 Recover: 80' Oil spt SWCM (10% Wtr, 90% M), 120' MCW (60% Wtr, 40% M).
 Recovery Chl 23,000.
 RW .37 @ 55 F.
 IH 2169#, IFP 25-62#, ISIP 1,162# building,
 FFP 68-117#, FSIP 1,048# building,
 FH 2065#, BHT 117 F.

Mud-CO/Service Mud
 9/24/2012 10:30 am
 Drilling @ 4337'
 Vis 95, WI 83, WL 9.6
 Ph 10.0, LCM 7x Chl 7,000

4378 CFS 57' Fair odor. Flood Chl, milky tan, tr, yell, clear, fresh, sub op to transl, foss in part, ang, sharp, edge por w/lt tan stn. PP BYE, SS lt tan FO. 5% Chl, wh, op, poor trip por, apt tan stn & blk oil stn in por. SS brn FO.