

**TRILOBITE TESTING, INC**

# DRILL STEM TEST REPORT

Gore Oil Company  
 202 S. st Francis  
 POBox 2757  
 Wichita Ks 67202-4518  
 ATTN: Larry Jack

Pywell "A"#5  
 4-10s-17w Rooks  
 Job Ticket: 39858      DST#: 1  
 Test Start: 2010.07.20 @ 01:29:18

## GENERAL INFORMATION:

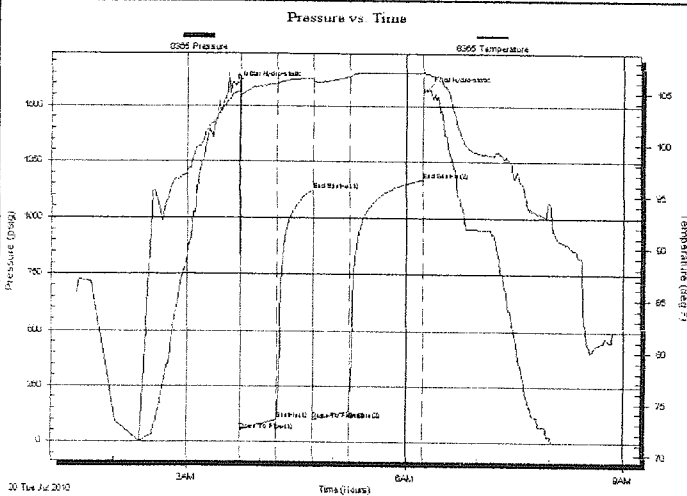
Formation: **LKC**  
 Deviated: No      Whipstock:      ft (KB)  
 Time Tool Opened: 03:43:13  
 Time Test Ended: 08:51:42  
 Interval: **3218.00 ft (KB) To 3342.00 ft (KB) (TVD)**  
 Total Depth: **3342.00 ft (KB) (TVD)**  
 Hole Diameter: **7.85 inches** Hole Condition: Fair  
 Test Type: Conventional Bottom Hole  
 Tester: Ray Schwager  
 Unit No: 42  
 Reference Elevations: 2094.00 ft (KB)  
 2086.00 ft (CF)  
 KB to GR/CF: 8.00 ft

## Serial #: 8365

Inside

Press@RunDepth: 136.26 psig @ 3220.01 ft (KB)      Capacity: 8000.00 psig  
 Start Date: 2010.07.20      End Date: 2010.07.20      Last Calib.: 2010.07.20  
 Start Time: 01:29:18      End Time: 08:51:42      Time On Btm: 2010.07.20 @ 03:39:43  
 Time Off Btm: 2010.07.20 @ 06:17:42

TEST COMMENT: IFF-w k to a gd bl 1/2" to 6" bl  
 FFP-w k bl 1/4" to 2" bl  
 Times 30-30-30-60  
 no bl on shut-in



## PRESSURE SUMMARY

Time (Min.)	Pressure (psig)	Temp (deg F)	Annotation
0	1592.05	105.00	Initial Hydro-static
4	47.92	104.53	Open To Flow (1)
34	98.87	105.83	Shut-In(1)
63	1119.75	106.39	End Shut-In(1)
64	99.51	106.08	Open To Flow (2)
94	136.26	106.57	Shut-In(2)
155	1168.82	106.97	End Shut-In(2)
158	1570.24	106.90	Final Hydro-static

## Recovery

Length (ft)	Description	Volume (bbl)
1.00	CO	0.01
75.00	HOCM 30% O70% M	1.05
60.00	OCM 10% O90% M	0.84
60.00	SOCMV 5% O30% M65% W	0.84

## Gas Rates

	Choke (inches)	Pressure (psig)	Gas Rate (Mcf/d)

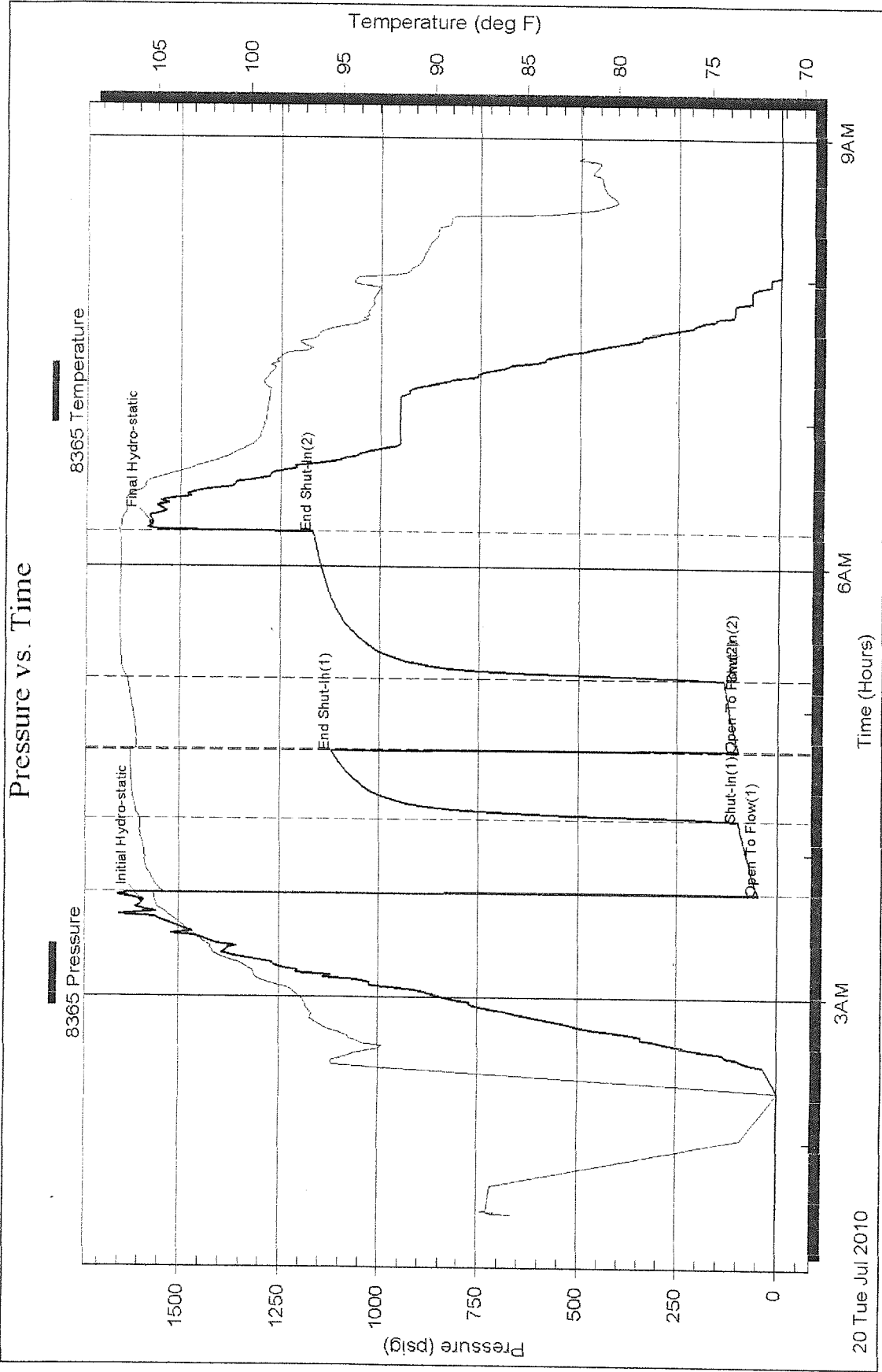
Serial #: 8365

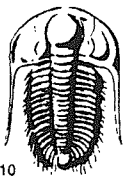
Inside

Gore Oil Company

4-10s-17w Rooks

DST Test Number: 1





# TRILOBITE TESTING INC.

P.O. Box 1733 • Hays, Kansas 67601

## Test Ticket

NO. 039858

Well Name & No. Pydell A #5 Test No. 1 Date 7-20-10  
 Company GORE Oil Company Elevation 2094 KB 2086 GL  
 Address 202 S. ST. FRANCIS, P.O. Box 2757 Wichita, KS 67202-4518  
 Co. Rep / Geo. Don Rider Rig Maverick rig 108  
 Location: Sec. 4 Twp. 10<sup>s</sup> Rge. 17<sup>w</sup> Co. Ranko State Ks

Interval Tested 3218-3342 Zone Tested LKC  
 Anchor Length 124 Drill Pipe Run 3217 Mud Wt. 9.2  
 Top Packer Depth 3213 Drill Collars Run - Vis 47  
 Bottom Packer Depth 3218 Wt. Pipe Run - WL 6.4  
 Total Depth 3342 Chlorides 4900 ppm System LCM 2#  
 Blow Description TFP - Weak to a Good Blow 1/2" To 6" Blow  
FFP - Weak Blow 1/4" To 2" Blow  
No Blow on shut-in

Rec	Feet of	%gas	%oil	%water	%mud
<u>1</u>	<u>CO</u>				
<u>75</u>	<u>HOCM</u>	<u>30</u>		<u>70</u>	
<u>60</u>	<u>OCM</u>	<u>10</u>		<u>90</u>	
<u>60</u>	<u>SOCMW</u>	<u>5</u>	<u>65</u>	<u>30</u>	

Rec Total 196 BHT 107 Gravity - API RW .14 @ 86 ° F Chlorides 58000 ppm

(A) Initial Hydrostatic 1592  Test T-On Location 0000  
 (B) First Initial Flow 47  Jars T-Started 0129  
 (C) First Final Flow 98  Safety Joint T-Open 0350  
 (D) Initial Shut-In 1119  Circ Sub T-Pulled 0620  
 (E) Second Initial Flow 99  Hourly Standby T-Out 0851  
 (F) Second Final Flow 136  Mileage  
 (G) Final Shut-In 1168  Sampler  
 (H) Final Hydrostatic 1570  Straddle  
 Shale Packer  
 Extra Packer  
 Extra Recorder  
 Day Standby  
 Accessibility

Initial Open 30  
 Initial Shut-In 30  
 Final Flow 30  
 Final Shut-In 60

Comments \_\_\_\_\_  
 Ruined Shale Packer  
 Ruined Packer  
 Extra Copies  
 Sub Total \_\_\_\_\_  
 Total \_\_\_\_\_  
 MP/DST Disc't \_\_\_\_\_

Sub Total \_\_\_\_\_

Approved By \_\_\_\_\_

Our Representative Ray Schwager *Thank you*

Trilobite Testing Inc. shall not be liable for damaged of any kind of the property or personnel of the one for whom a test is made, or for any loss suffered or sustained, directly or indirectly, through the use of its equipment, or its statements or opinion concerning the results of any test, tools lost or damaged in the hole shall be paid for at cost by the party for whom the test is made.



**TRILOBITE TESTING, INC**

# DRILL STEM TEST REPORT

Gore Oil Company  
 202 S. st Francis  
 P OBox 2757  
 Wichita Ks 67202-4518  
 ATTN: Larry Jack

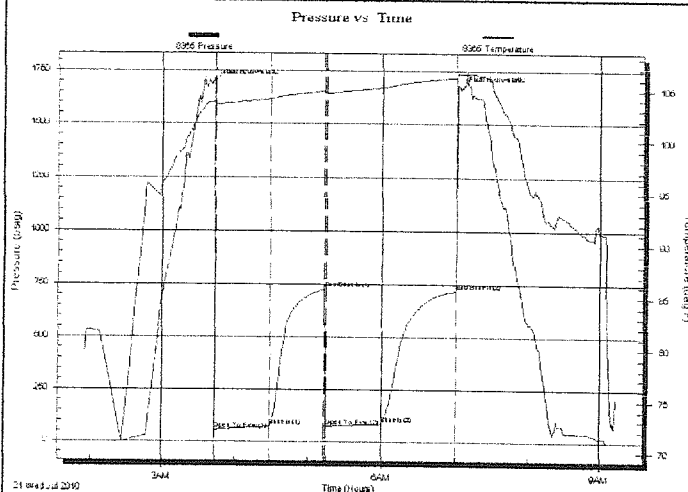
Pywell "A"#5  
 4-10s-17w Rooks  
 Job Ticket: 39859      DST#: 2  
 Test Start: 2010.07.21 @ 01:54:49

## GENERAL INFORMATION:

Formation: LKC H-L  
 Deviated: No Whipstock:      ft (KB)  
 Time Tool Opened: 03:43:44  
 Time Test Ended: 09:13:43  
 Interval: 3380.00 ft (KB) To 3492.00 ft (KB) (TVD)  
 Total Depth: 3492.00 ft (KB) (TVD)  
 Hole Diameter: 7.85 inches Hole Condition: Fair  
 Test Type: Conventional Bottom Hole  
 Tester: Ray Schwager  
 Unit No: 42  
 Reference Elevations: 2094.00 ft (KB)  
 2086.00 ft (CF)  
 KB to GR/CF: 8.00 ft

Serial #: 8365      Inside  
 Press@RunDepth: 87.38 psig @ 3395.01 ft (KB)      Capacity: 8000.00 psig  
 Start Date: 2010.07.21      End Date: 2010.07.21      Last Calib.: 2010.07.21  
 Start Time: 01:54:49      End Time: 09:13:43      Time On Btm: 2010.07.21 @ 03:41:14  
 Time Off Btm: 2010.07.21 @ 07:04:13

TEST COMMENT: IFF-w k bl 1/4"bl to 1 1/4"bl  
 FFP-surface bl thru-out  
 Times 45-45-45-60  
 no bl on shut-in



## PRESSURE SUMMARY

Time (Min.)	Pressure (psig)	Temp (deg F)	Annotation
0	1691.11	103.76	Initial Hydro-static
3	53.21	103.30	Open To Flow (1)
48	73.47	104.12	Shut-In(1)
92	726.01	104.89	End Shut-In(1)
93	74.95	104.69	Open To Flow (2)
138	87.38	105.22	Shut-In(2)
199	715.47	106.20	End Shut-In(2)
203	1666.80	106.53	Final Hydro-static

## Recovery

Length (ft)	Description	Volume (bbl)
1.00	CO	0.01
60.00	SOCM 3%O97%M	0.84

## Gas Rates

Choke (inches)	Pressure (psig)	Gas Rate (Mcf/d)

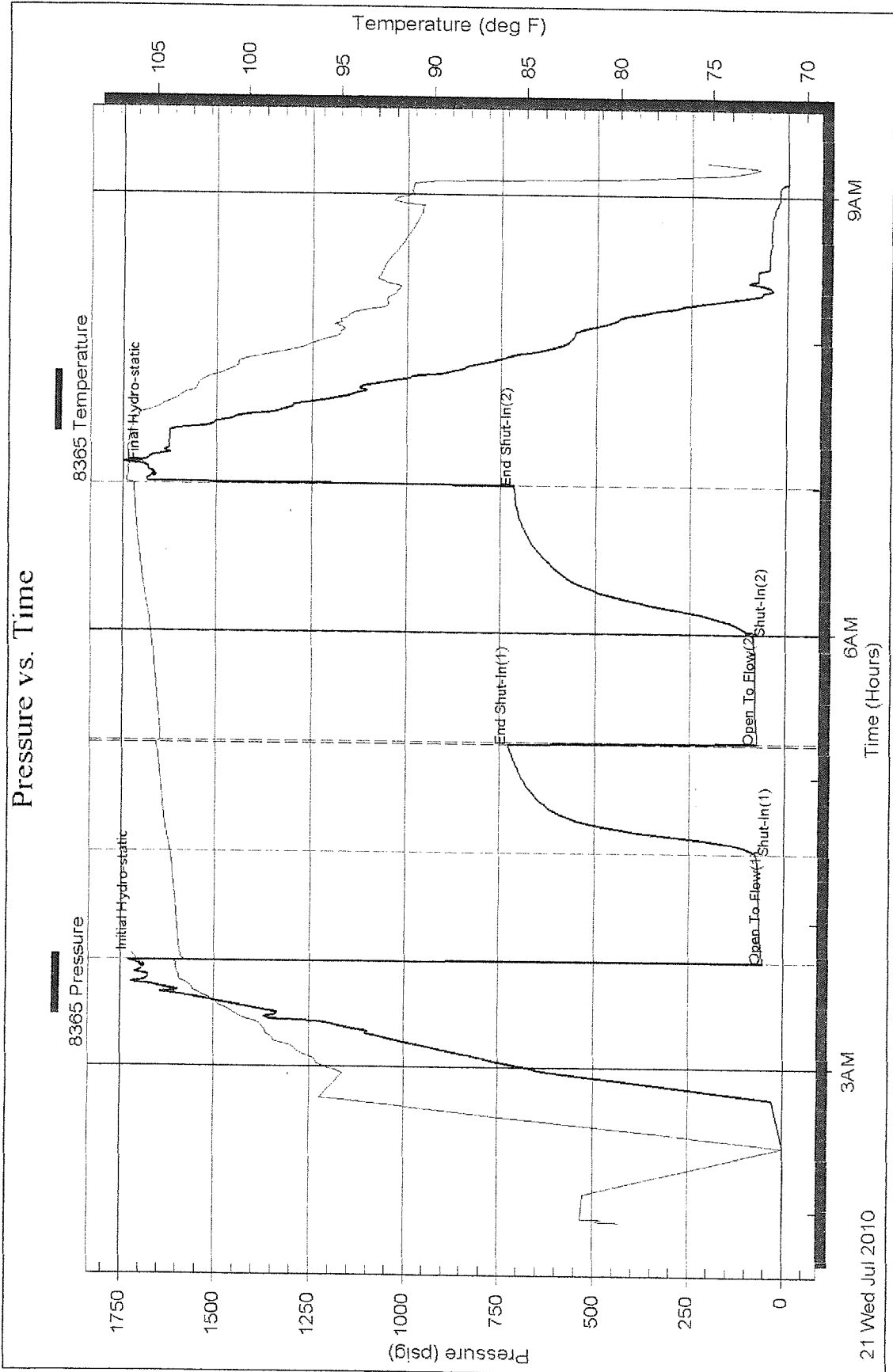
Serial #: 8365

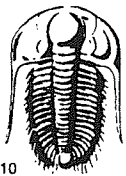
Inside

Gore Oil Company

4-10s-17w Rocks

DST Test Number: 2





# TRILOBITE TESTING INC.

P.O. Box 1733 • Hays, Kansas 67601

## Test Ticket

NO. 039559

4/10

Well Name & No. Pywell "A" #5 Test No. 2 Date 7-20-10  
 Company Coke Oil Company Elevation 2094 KB 2086 GL  
 Address 202 S. ST. FRANCIS P.O. Box 2757 WICHITA, KS 67202-4518  
 Co. Rep / Geo. Van Rider Rig MANERICK 119108  
 Location: Sec. 4 Twp. 10<sup>n</sup> Rge. 17<sup>w</sup> Co. Rooks State Ks

Interval Tested 3380-3492 Zone Tested LKC H, J, J, K, L  
 Anchor Length 112 Drill Pipe Run 3375 Mud Wt. 9.3  
 Top Packer Depth 3375 Drill Collars Run - Vis 49  
 Bottom Packer Depth 3380 Wt. Pipe Run - WL 6.8  
 Total Depth 3492 Chlorides 5000 ppm System LCM 2#  
 Blow Description TFP - WEAK Blow 1/4" To 1 1/4" Blow.  
TFP - SURFACE BLOW THRU-OUT

Rec	Feet of	%gas	%oil	%water	%mud
<u>1</u>	<u>CO</u>				
<u>60</u>	<u>SOCM</u>	<u>3</u>		<u>97</u>	

Rec Total 601 BHT 106 Gravity - API RW - @ - ° F Chlorides - ppm

(A) Initial Hydrostatic 1691  Test 2300  
 (B) First Initial Flow 53  Jars 0154  
 (C) First Final Flow 73  Safety Joint 0345  
 (D) Initial Shut-In 726  Circ Sub 0700  
 (E) Second Initial Flow 74  Hourly Standby 0913  
 (F) Second Final Flow 87  Mileage 65 RT  
 (G) Final Shut-In 715  Sampler  
 (H) Final Hydrostatic 1666  Straddle  
 Shale Packer  
 Extra Packer  
 Extra Recorder  
 Day Standby  
 Accessibility

Initial Open 45  
 Initial Shut-In 45  
 Final Flow 45  
 Final Shut-In 60

Ruined Shale Packer  
 Ruined Packer  
 Extra Copies  
 Sub Total  
 Total  
 MP/DST Disc't

Approved By \_\_\_\_\_ Our Representative RAY SCHWARTZ *Thank you*

Trilobite Testing Inc. shall not be liable for damaged of any kind of the property or personnel of the one for whom a test is made, or for any loss suffered or sustained, directly or indirectly, through the use of its equipment, or its statements or opinion concerning the results of any test, tools lost or damaged in the hole shall be paid for at cost by the party for whom the test is made.