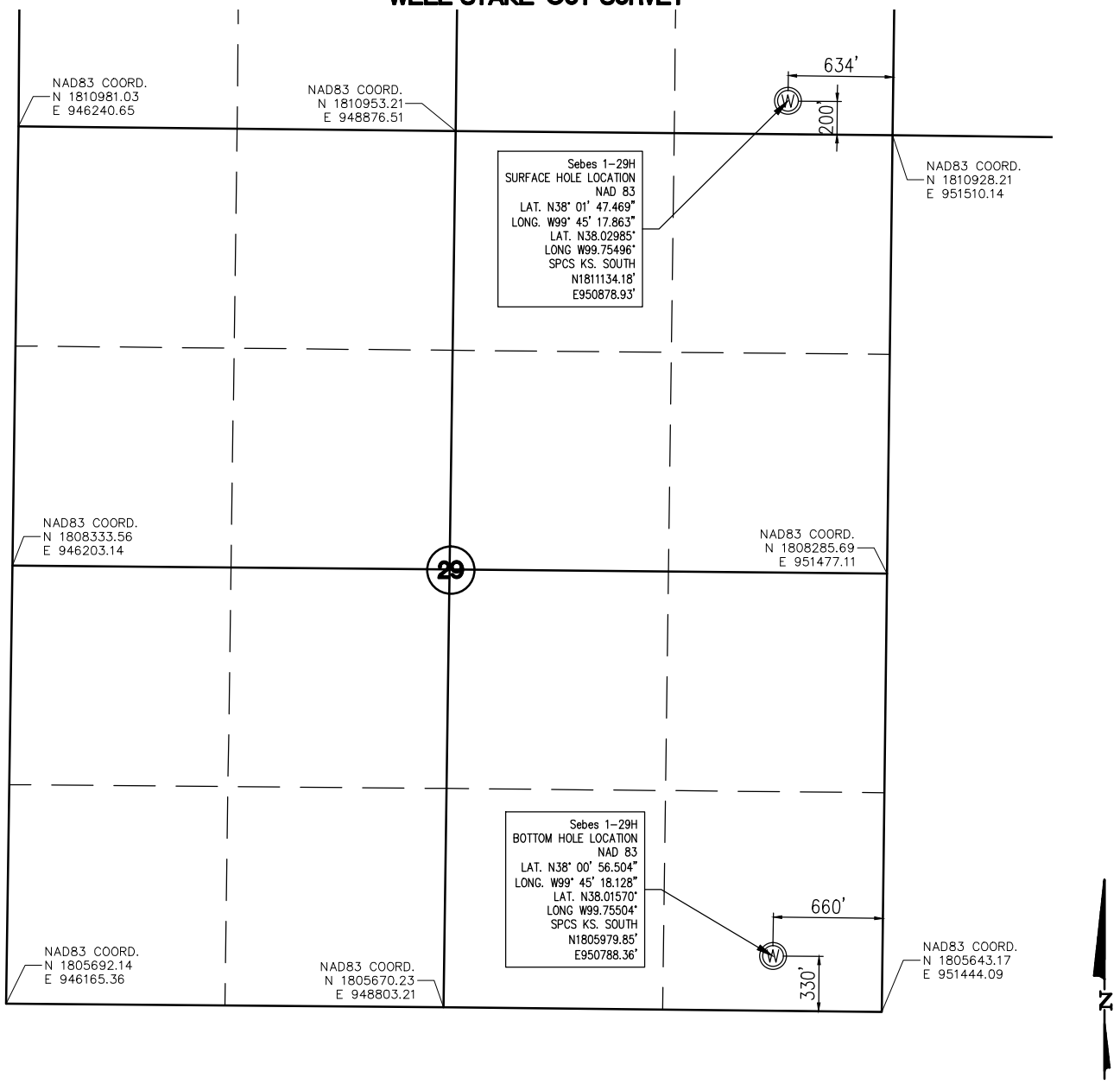


**WELL STAKE-OUT SURVEY**



Lease Name: Sebes  
 Well No. 1-29H  
 Surface El. at SHL stake: 2331 NAVD88  
 Well location Co./State: Hodgeman Co. Kansas  
 Well location Section: 20 & 29-T23S-R22W

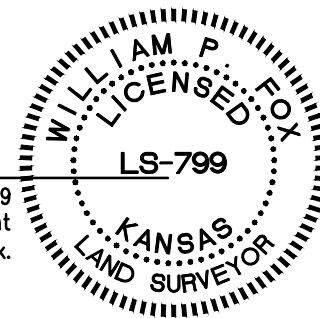
Alternate Datums  
 Horz. Datum NAD27  
 Sebes #1-29H SHL Lat. N38.029836° Long. W99.754558°

SURVEY DATUMS (shown on drawing)  
 Horz. Datum NAD83(CORS96)  
 Vert. Datum NAVD88(GEIOD09)  
 Ks. SPCS South Zone (US Feet)

State of Kansas )  
 )SS  
 Sedgwick County )

This is to certify that this map or plat and the survey on which it is based was made by me or under my direct supervision and that to the best of knowledge and belief, this is a true and correct exhibit of said Survey. The wells shown hereon were staked August 1, 2012 at the coordinate location noted.

William P. Fox LS 799  
 This survey is valid only if print  
 bears Surveyor's seal signed in blue ink.



POE & ASSOCIATES, INC.  
 CONSULTING ENGINEERS  
 5940 E. Central, Suite 200 Wichita, KS 67208-4242  
 Phone 316/685-4114 FAX 316/685-4444