



**TRILOBITE TESTING, INC.**

# DRILL STEM TEST REPORT

Klabbzuba Oil&Gas Inc  
 700 17th ST  
 Ste 1300  
 Denver Co 80202  
 ATTN: Brett Wisner

**3-15s-20w Ellis**

**NorthTrust3-10-15-20**

Job Ticket: 46847

**DST#: 1**

Test Start: 2012.02.17 @ 18:25:56

## GENERAL INFORMATION:

Formation: **Oread**

Deviated: No Whipstock: ft (KB)

Time Tool Opened: 20:37:51

Time Test Ended: 01:15:20

Test Type: Conventional Bottom Hole (Initial)

Tester: Ray Schwager

Unit No: 42

**Interval: 3260.00 ft (KB) To 3280.00 ft (KB) (TVD)**

Reference Elevations: 2048.00 ft (KB)

Total Depth: 3280.00 ft (KB) (TVD)

2040.00 ft (CF)

Hole Diameter: 7.85 inches Hole Condition: Fair

KB to GR/CF: 8.00 ft

**Serial #: 6625 Inside**

Press @ Run Depth: 25.54 psig @ 3261.00 ft (KB)

Capacity: 8000.00 psig

Start Date: 2012.02.17

End Date:

2012.02.18

Last Calib.:

2012.02.18

Start Time: 18:25:56

End Time:

01:15:20

Time On Btm:

2012.02.17 @ 20:34:51

Time Off Btm:

2012.02.17 @ 23:43:50

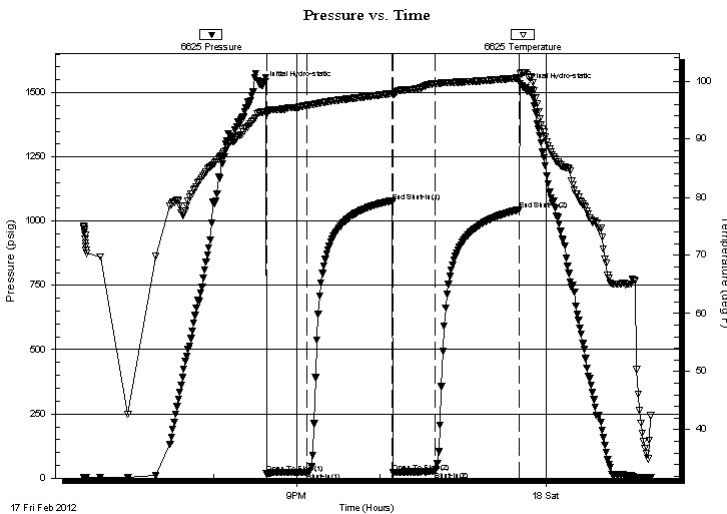
TEST COMMENT: 30-IFP-surface bl thru-out

60-ISIP-no bl

30-FFP-no bl

60-FSIP-no bl

## PRESSURE SUMMARY



Time (Min.)	Pressure (psig)	Temp (deg F)	Annotation
0	1527.92	94.68	Initial Hydro-static
3	16.85	94.24	Open To Flow (1)
33	22.45	95.82	Shut-In(1)
94	1074.81	97.89	End Shut-In(1)
95	22.86	97.64	Open To Flow (2)
125	25.54	99.52	Shut-In(2)
186	1044.22	100.54	End Shut-In(2)
189	1520.28	101.50	Final Hydro-static

## Recovery

Length (ft)	Description	Volume (bbl)
15.00	Mud	0.21

## Gas Rates

Choke (inches)	Pressure (psig)	Gas Rate (Mcf/d)





**TRILOBITE  
TESTING, INC.**

# DRILL STEM TEST REPORT

**FLUID SUMMARY**

Klabzuba Oil&Gas Inc

**3-15s-20w Ellis**

700 17th ST  
Ste 1300  
Denver Co 80202  
ATTN: Brett Wisner

**NorthTrust3-10-15-20**

Job Ticket: 46847

**DST#: 1**

Test Start: 2012.02.17 @ 18:25:56

## Mud and Cushion Information

Mud Type: Gel Chem

Cushion Type:

Oil API:

deg API

Mud Weight: 8.00 lb/gal

Cushion Length:

ft

Water Salinity:

ppm

Viscosity: 53.00 sec/qt

Cushion Volume:

bbf

Water Loss: 7.19 in<sup>3</sup>

Gas Cushion Type:

Resistivity: ohm.m

Gas Cushion Pressure:

psig

Salinity: 4900.00 ppm

Filter Cake: 1.00 inches

## Recovery Information

Recovery Table

Length ft	Description	Volume bbf
15.00	Mud	0.210

Total Length: 15.00 ft      Total Volume: 0.210 bbf

Num Fluid Samples: 0

Num Gas Bombs: 0

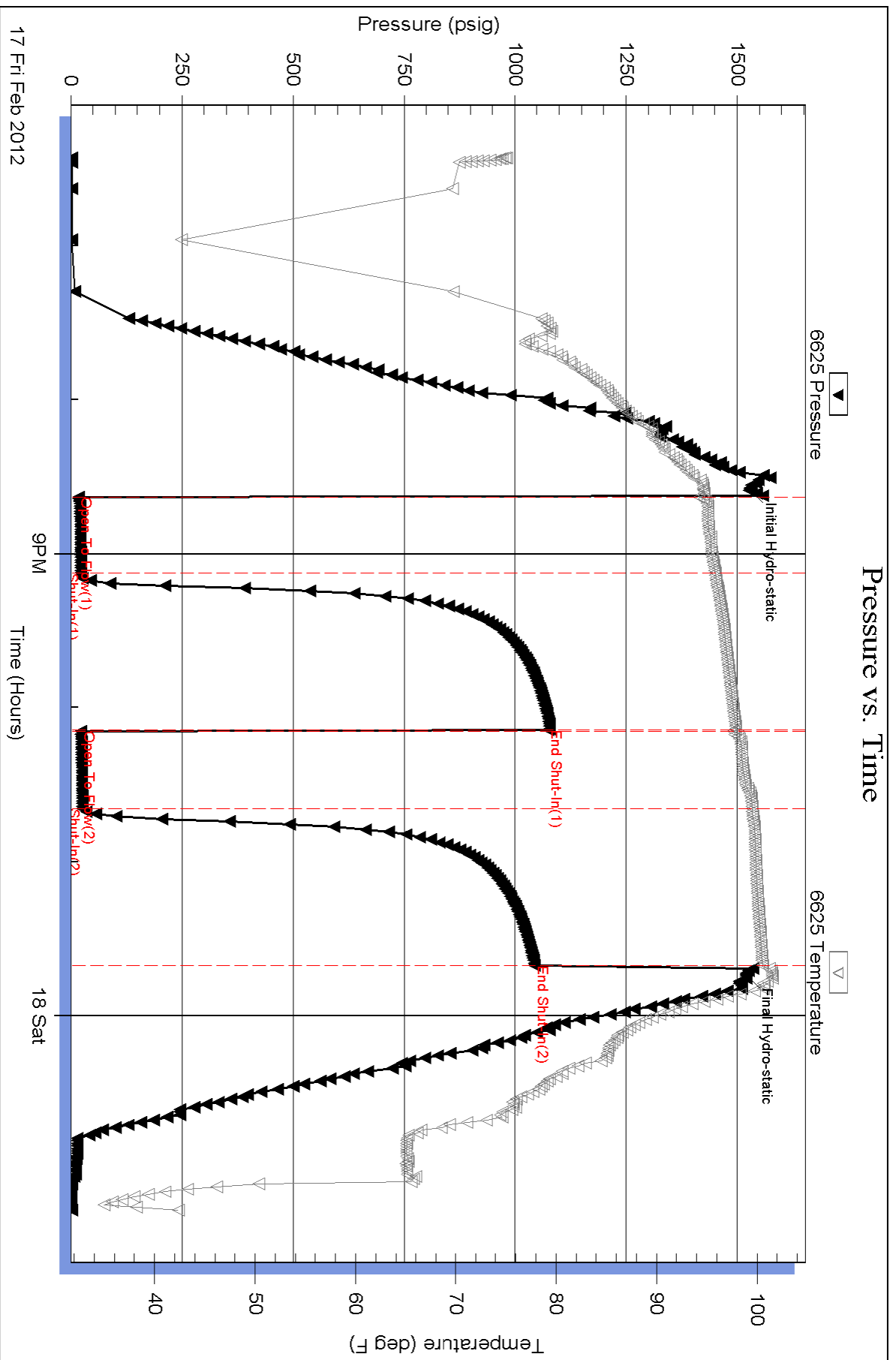
Serial #:

Laboratory Name:

Laboratory Location:

Recovery Comments: Sampler Data:PSI 25# 1000ML mud

### Pressure vs. Time



Serial #: 8700

Outside Klabbzuba Oil&Gas Inc

NorthTrust3-10-15-20

DST Test Number: 1

