

**TRILOBITE
TESTING, INC.**

DRILL STEM TEST REPORT

Klabbzuba Oil&Gas Inc

3-15s-20w Ellis

700 17th ST
Ste 1300
Denver Co 80202
ATTN: Brett Wisner

NorthTrust3-10-15-20

Job Ticket: 46848 **DST#: 2**
Test Start: 2012.02.18 @ 12:35:08

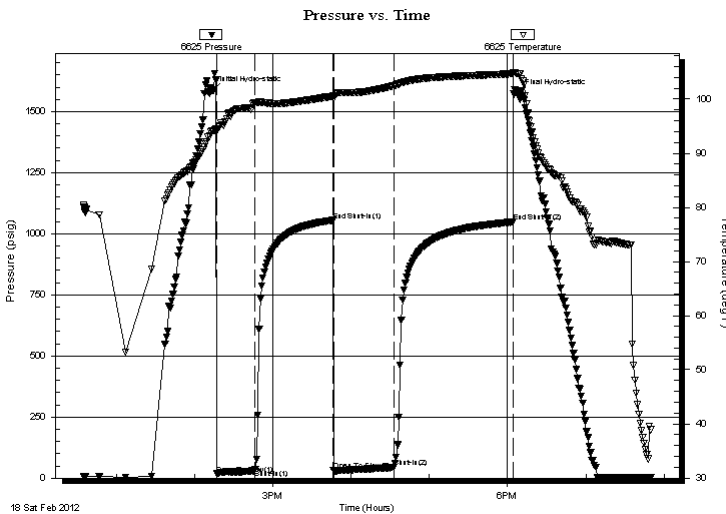
GENERAL INFORMATION:

Formation: **LKC "B"**
Deviated: No Whipstock: ft (KB)
Time Tool Opened: 14:17:03
Time Test Ended: 19:50:02
Interval: **3370.00 ft (KB) To 3393.00 ft (KB) (TVD)**
Total Depth: 3393.00 ft (KB) (TVD)
Hole Diameter: 7.85 inches Hole Condition: Fair
Test Type: Conventional Bottom Hole (Reset)
Tester: Ray Schwager
Unit No: 42
Reference Elevations: 2048.00 ft (KB)
2040.00 ft (CF)
KB to GR/CF: 8.00 ft

Serial #: 6625 Inside
Press @ Run Depth: 43.97 psig @ 3371.00 ft (KB) Capacity: 8000.00 psig
Start Date: 2012.02.18 End Date: 2012.02.18 Last Calib.: 2012.02.18
Start Time: 12:35:08 End Time: 19:50:02 Time On Btm: 2012.02.18 @ 14:14:03
Time Off Btm: 2012.02.18 @ 18:08:02

TEST COMMENT: 30-IFP-w k bl surface to 1 1/2"bl
60-ISIP-no bl
45-FFP-surface to 1/8"bl
90-FSIP-no bl

PRESSURE SUMMARY



Time (Min.)	Pressure (psig)	Temp (deg F)	Annotation
0	1586.19	94.16	Initial Hydro-static
3	17.35	94.27	Open To Flow (1)
33	35.40	99.39	Shut-In(1)
92	1055.03	100.54	End Shut-In(1)
93	31.90	100.15	Open To Flow (2)
139	43.97	102.47	Shut-In(2)
230	1048.23	104.70	End Shut-In(2)
234	1572.22	104.67	Final Hydro-static

Recovery

Length (ft)	Description	Volume (bbl)
30.00	GIP	0.42
30.00	Water	0.42

Gas Rates

	Choke (inches)	Pressure (psig)	Gas Rate (Mcf/d)

* Recovery from multiple tests



TRILOBITE TESTING, INC.

DRILL STEM TEST REPORT

Klabbzuba Oil&Gas Inc
 700 17th ST
 Ste 1300
 Denver Co 80202
 ATTN: Brett Wisner

3-15s-20w Ellis

NorthTrust3-10-15-20

Job Ticket: 46848

DST#: 2

Test Start: 2012.02.18 @ 12:35:08

GENERAL INFORMATION:

Formation: **LKC "B"**
 Deviated: No Whipstock: ft (KB)
 Time Tool Opened: 14:17:03
 Time Test Ended: 19:50:02
 Interval: **3370.00 ft (KB) To 3393.00 ft (KB) (TVD)**
 Total Depth: 3393.00 ft (KB) (TVD)
 Hole Diameter: 7.85 inches Hole Condition: Fair
 Test Type: Conventional Bottom Hole (Reset)
 Tester: Ray Schwager
 Unit No: 42
 Reference Elevations: 2048.00 ft (KB)
 2040.00 ft (CF)
 KB to GR/CF: 8.00 ft

Serial #: 8700

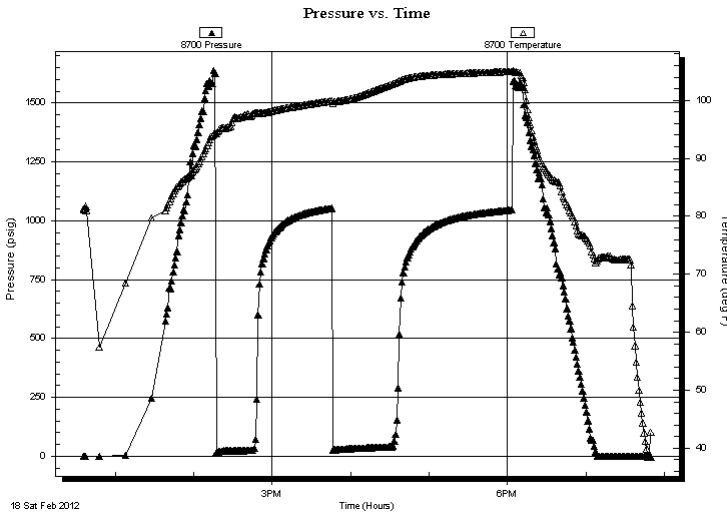
Outside

Press @ Run Depth: psig @ 3371.00 ft (KB)
 Start Date: 2012.02.18 End Date: 2012.02.18
 Start Time: 12:36:01 End Time: 19:49:25

Capacity: 8000.00 psig
 Last Calib.: 2012.02.18
 Time On Btm:
 Time Off Btm:

TEST COMMENT: 30-IFP-w k bl surface to 1 1/2"bl
 60-ISIP-no bl
 45-FFP-surface to 1/8"bl
 90-FSIP-no bl

PRESSURE SUMMARY



Time (Min.)	Pressure (psig)	Temp (deg F)	Annotation

Recovery

Length (ft)	Description	Volume (bbl)
30.00	GIP	0.42
30.00	Water	0.42

Gas Rates

Choke (inches)	Pressure (psig)	Gas Rate (Mcf/d)

* Recovery from multiple tests



**TRILOBITE
TESTING, INC.**

DRILL STEM TEST REPORT

FLUID SUMMARY

Klabzuba Oil&Gas Inc

3-15s-20w Ellis

700 17th ST
Ste 1300
Denver Co 80202
ATTN: Brett Wisner

NorthTrust3-10-15-20

Job Ticket: 46848 **DST#: 2**
Test Start: 2012.02.18 @ 12:35:08

Mud and Cushion Information

Mud Type: Gel Chem	Cushion Type:	Oil API:	deg API
Mud Weight: 9.00 lb/gal	Cushion Length: ft	Water Salinity:	67000 ppm
Viscosity: 54.00 sec/qt	Cushion Volume: bbl		
Water Loss: 6.79 in ³	Gas Cushion Type:		
Resistivity: ohm.m	Gas Cushion Pressure: psig		
Salinity: 4900.00 ppm			
Filter Cake: 1.00 inches			

Recovery Information

Recovery Table

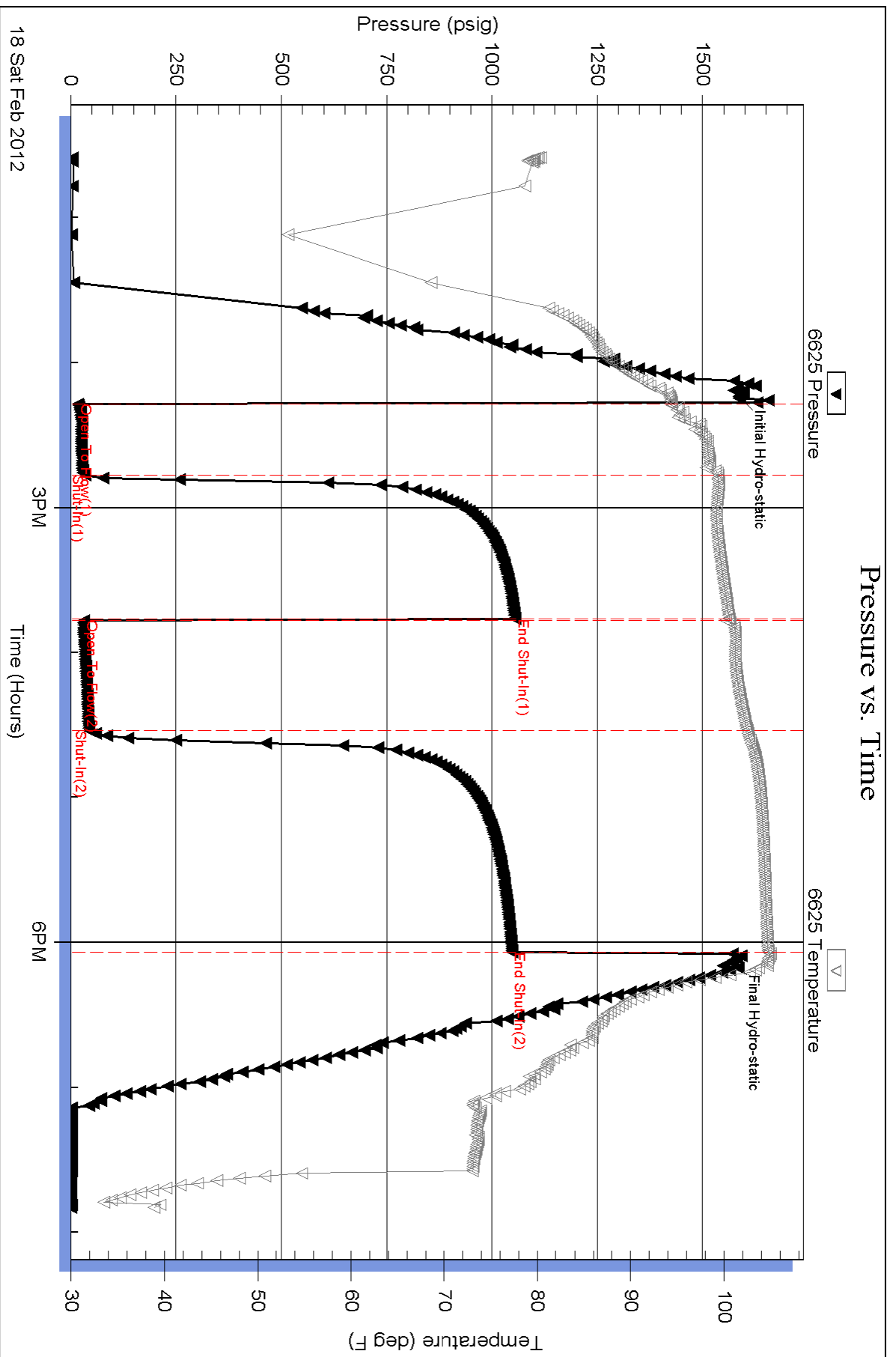
Length ft	Description	Volume bbl
30.00	GIP	0.421
30.00	Water	0.421

Total Length: 60.00 ft Total Volume: 0.842 bbl

Num Fluid Samples: 0 Num Gas Bombs: 0 Serial #:

Laboratory Name: Laboratory Location:

Recovery Comments: Sampler Data : PSI 190# 1500MLw ater scum of oil
RW .12@ 65F

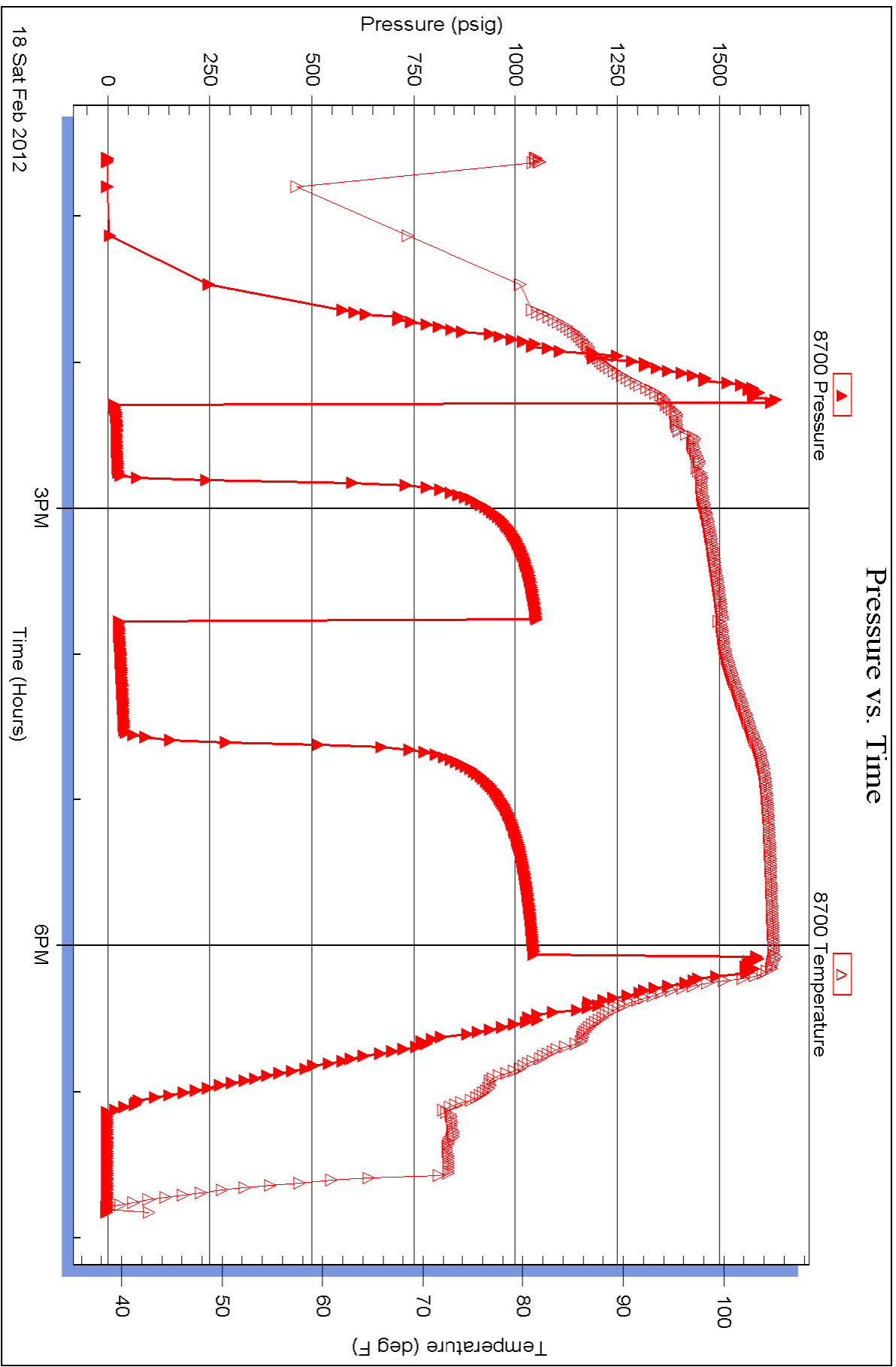


Serial #: 8700

Outside Klabbzuba Oil&Gas Inc

NorthTrust3-10-15-20

DST Test Number: 2



Triobite Testing, Inc

Ref. No: 46848

Printed: 2012.02.18 @ 22:47:11