



**TRILOBITE TESTING, INC.**

# DRILL STEM TEST REPORT

Klabbzuba Oil&Gas Inc

**3-15s-20w Ellis**

700 17th ST  
Ste 1300  
Denver Co 80202  
ATTN: Brett Wisner

**NorthTrust3-10-15-20**

Job Ticket: 46849

**DST#: 3**

Test Start: 2012.02.19 @ 18:55:10

## GENERAL INFORMATION:

Formation: **Pawnee**

Deviated: No Whipstock: ft (KB)

Time Tool Opened: 20:59:35

Time Test Ended: 02:10:04

Test Type: Conventional Bottom Hole (Reset)

Tester: Ray Schwager

Unit No: 42

**Interval: 3670.00 ft (KB) To 3686.00 ft (KB) (TVD)**

Reference Elevations: 2048.00 ft (KB)

Total Depth: 3686.00 ft (KB) (TVD)

2040.00 ft (CF)

Hole Diameter: 7.85 inches Hole Condition: Fair

KB to GR/CF: 8.00 ft

**Serial #: 6625 Inside**

Press @ Run Depth: 33.56 psig @ 3671.00 ft (KB)

Capacity: 8000.00 psig

Start Date: 2012.02.19

End Date:

2012.02.20

Last Calib.:

2012.02.20

Start Time: 18:55:10

End Time:

02:10:04

Time On Btm:

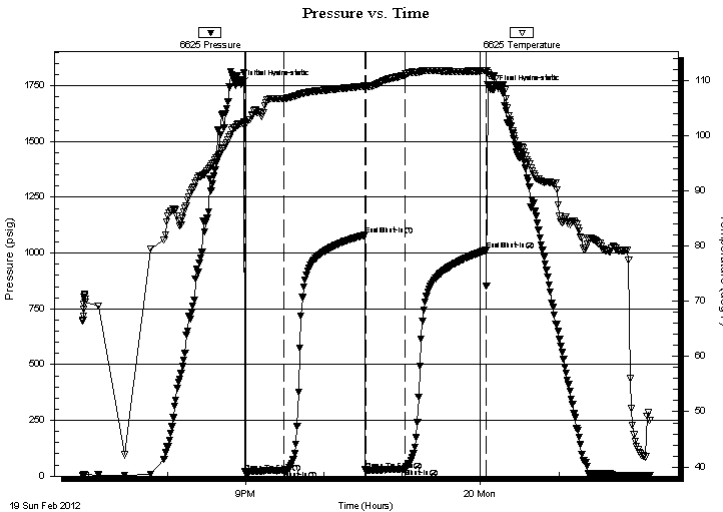
2012.02.19 @ 20:56:35

Time Off Btm:

2012.02.20 @ 00:09:04

**TEST COMMENT:** 30-IFP-w k bl 1/8"to 1/4"bl  
60-ISIP-no bl  
30-FFP-no bl  
60-FSIP-no bl

## PRESSURE SUMMARY



Time (Min.)	Pressure (psig)	Temp (deg F)	Annotation
0	1756.98	102.10	Initial Hydro-static
3	19.01	102.30	Open To Flow (1)
33	25.27	106.70	Shut-In(1)
95	1080.20	108.94	End Shut-In(1)
96	25.21	109.05	Open To Flow (2)
126	33.56	110.92	Shut-In(2)
188	1012.04	111.75	End Shut-In(2)
193	1733.60	110.75	Final Hydro-static

## Recovery

Length (ft)	Description	Volume (bbl)
5.00	CO	0.07
25.00	MO 20% M80% O	0.35

\* Recovery from multiple tests

## Gas Rates

	Choke (inches)	Pressure (psig)	Gas Rate (Mcf/d)



**TRILOBITE  
TESTING, INC.**

# DRILL STEM TEST REPORT

## FLUID SUMMARY

Klabzuba Oil&Gas Inc

**3-15s-20w Ellis**

700 17th ST  
Ste 1300  
Denver Co 80202  
ATTN: Brett Wisner

**NorthTrust3-10-15-20**

Job Ticket: 46849

**DST#: 3**

Test Start: 2012.02.19 @ 18:55:10

### Mud and Cushion Information

Mud Type: Gel Chem

Cushion Type:

Oil API:

39 deg API

Mud Weight: 9.00 lb/gal

Cushion Length:

ft

Water Salinity:

ppm

Viscosity: 50.00 sec/qt

Cushion Volume:

bbbl

Water Loss: 7.58 in<sup>3</sup>

Gas Cushion Type:

Resistivity: ohm.m

Gas Cushion Pressure:

psig

Salinity: 5000.00 ppm

Filter Cake: 1.00 inches

### Recovery Information

Recovery Table

Length ft	Description	Volume bbl
5.00	CO	0.070
25.00	MO 20%M80%O	0.351

Total Length: 30.00 ft      Total Volume: 0.421 bbl

Num Fluid Samples: 0

Num Gas Bombs: 0

Serial #:

Laboratory Name:

Laboratory Location:

Recovery Comments: Sampler Data: PSI 120# 200ML mud 800MLoil

Serial #: 6625

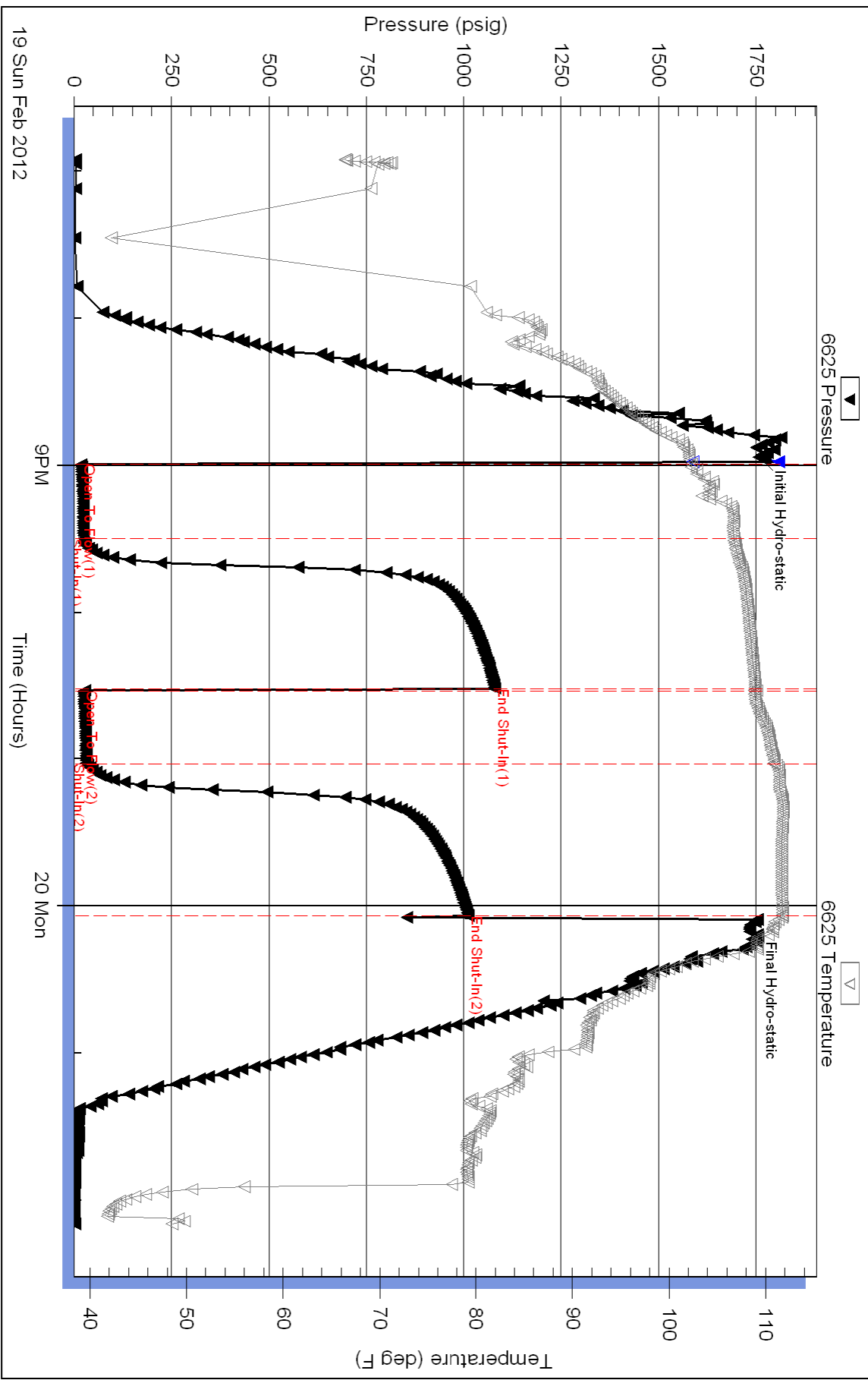
Inside

Klabzuba Oil&Gas Inc

NorthTrust3-10-15-20

DST Test Number: 3

### Pressure vs. Time



Triobite Testing, Inc

Ref. No: 46849

Printed: 2012.02.20 @ 08:43:23