



**TRILOBITE  
TESTING, INC.**

# DRILL STEM TEST REPORT

Klabbzuba Oil&Gas Inc

**3-15s-20w Ellis**

700 17th ST  
Ste 1300  
Denver Co 80202  
ATTN: Brett Wisner

**NorthTrust3-10-15-20**

Job Ticket: 46850 **DST#: 4**

Test Start: 2012.02.20 @ 12:30:36

## GENERAL INFORMATION:

Formation: **Reagan**

Deviated: No Whipstock: ft (KB)

Time Tool Opened: 14:39:01

Time Test Ended: 19:28:00

Test Type: Conventional Bottom Hole (Reset)

Tester: Ray Schwager

Unit No: 42

**Interval: 3696.00 ft (KB) To 3721.00 ft (KB) (TVD)**

Reference Elevations: 2048.00 ft (KB)

Total Depth: 3721.00 ft (KB) (TVD)

2040.00 ft (CF)

Hole Diameter: 7.85 inches Hole Condition: Fair

KB to GR/CF: 8.00 ft

**Serial #: 6625 Inside**

Press @ Run Depth: 31.75 psig @ 3697.00 ft (KB)

Capacity: 8000.00 psig

Start Date: 2012.02.20

End Date:

2012.02.20

Last Calib.:

2012.02.20

Start Time: 12:30:36

End Time:

19:28:00

Time On Btm:

2012.02.20 @ 14:35:31

Time Off Btm:

2012.02.20 @ 17:44:30

**TEST COMMENT:** 30-IFP-surface bl, died in 20min

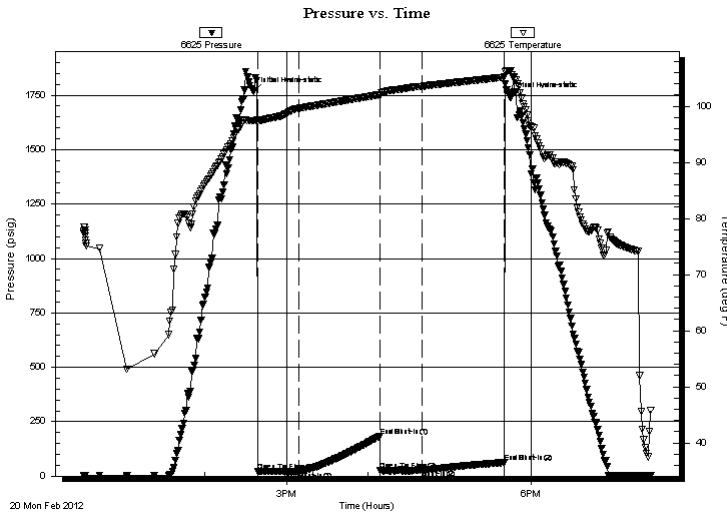
60-ISIP-no bl

30-FFP-no bl

60-FSIP-no bl

## PRESSURE SUMMARY

Time (Min.)	Pressure (psig)	Temp (deg F)	Annotation
0	1765.96	97.46	Initial Hydro-static
4	20.40	97.43	Open To Flow (1)
34	21.76	99.64	Shut-In(1)
93	183.19	102.06	End Shut-In(1)
94	24.89	102.03	Open To Flow (2)
125	31.75	103.58	Shut-In(2)
185	61.84	105.21	End Shut-In(2)
189	1741.84	106.40	Final Hydro-static



## Recovery

Length (ft)	Description	Volume (bbl)
5.00	OCM 5%O95%M	0.07

## Gas Rates

Choke (inches)	Pressure (psig)	Gas Rate (Mcf/d)

\* Recovery from multiple tests



**TRILOBITE  
TESTING, INC.**

# DRILL STEM TEST REPORT

**FLUID SUMMARY**

Klabzuba Oil&Gas Inc

**3-15s-20w Ellis**

700 17th ST  
Ste 1300  
Denver Co 80202  
ATTN: Brett Wisner

**NorthTrust3-10-15-20**

Job Ticket: 46850 **DST#: 4**

Test Start: 2012.02.20 @ 12:30:36

## Mud and Cushion Information

Mud Type: Gel Chem	Cushion Type:	Oil API:	deg API
Mud Weight: 9.00 lb/gal	Cushion Length: ft	Water Salinity:	ppm
Viscosity: 45.00 sec/qt	Cushion Volume: bbl		
Water Loss: 7.79 in <sup>3</sup>	Gas Cushion Type:		
Resistivity: ohm.m	Gas Cushion Pressure: psig		
Salinity: 5100.00 ppm			
Filter Cake: 1.00 inches			

## Recovery Information

Recovery Table

Length ft	Description	Volume bbl
5.00	OCM 5%O95%M	0.070

Total Length: 5.00 ft Total Volume: 0.070 bbl

Num Fluid Samples: 0 Num Gas Bombs: 0 Serial #:

Laboratory Name: Laboratory Location:

Recovery Comments: Sampler Data: PSI 20# 250MLoil 400MLmud

Serial #: 6625

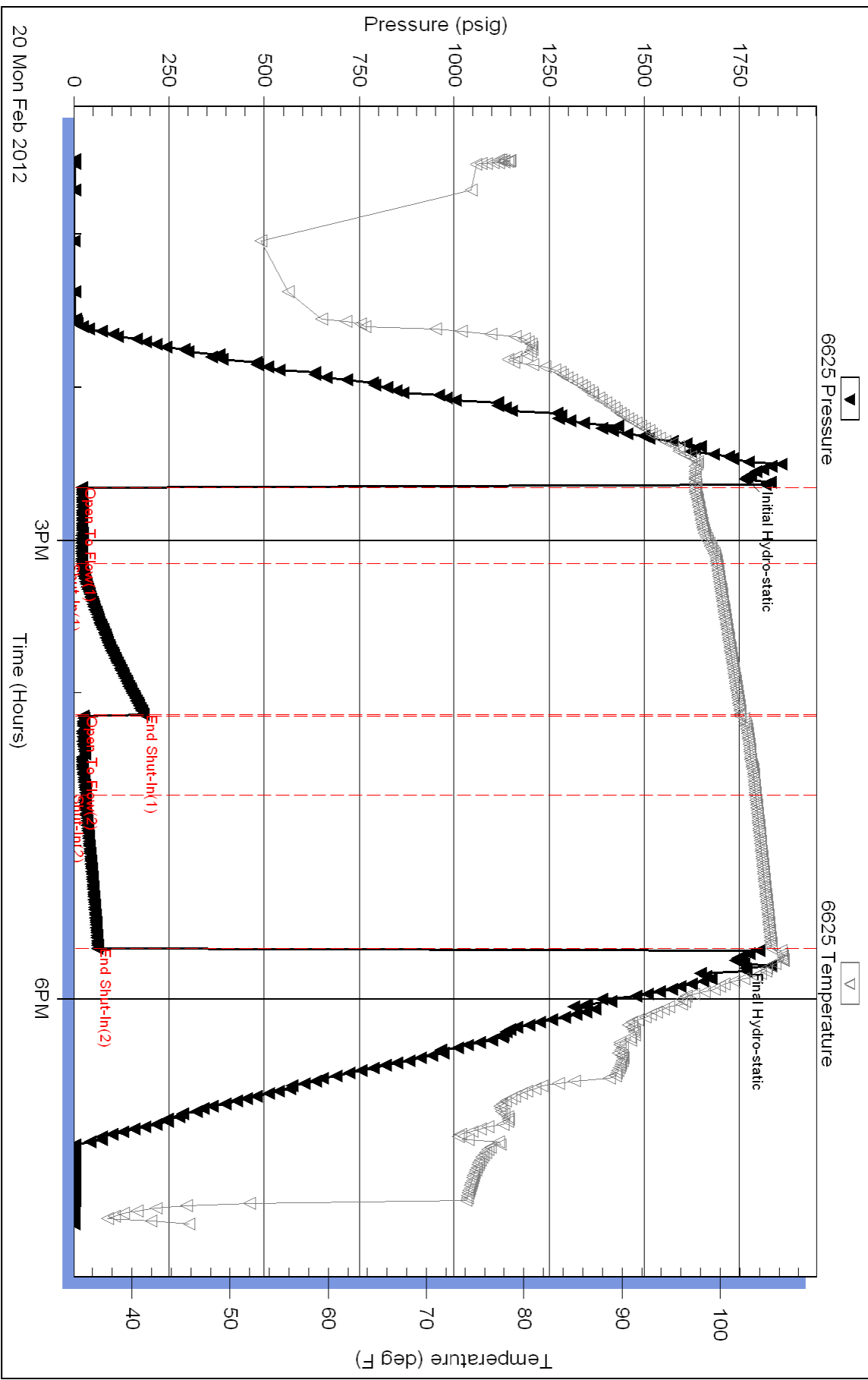
Inside

Klabzuba Oil&Gas Inc

North Trust3-10-15-20

DST Test Number: 4

### Pressure vs. Time



Triobite Testing, Inc

Ref. No: 46850

Printed: 2012.02.21 @ 09:01:11