



Woolsey Operating Company, LLC

Scale 1:240 (5"=100') Imperial

Measured Depth Log

Well Name: Miller-Diel #1 H
Location: Section 14 - Township 34 South - Range 11 West
License Number: 15-007-23928-01-00 Region: Barber County, KS
Spud Date: Drilling Completed:
Surface Coordinates: SW SE SE SW
13' FSL, 2115' FWL
Bottom Hole 330' FSL, 1980' FWL
Coordinates: Section 23 - Township 34 South - Range 11 West
Ground Elevation (ft): 1380' K.B. Elevation (ft): 1397'
Logged Interval (ft): 3600' To: Total Depth (ft):
Formation: Kansas City Grp ---> Mississippian
Type of Drilling Fluid: Chemical Mud
Printed by WellSight Log Viewer from WellSight Systems 1-800-447-1534 www.WellSight.com

OPERATOR

Company: Woolsey Operating Company, LLC
Address: 125 N. Market, Suite 1000
Wichita, KS 67202

GEOLOGIST

Name: Billy G. Klaver
Company: Woolsey Operating Co. LLC
Address: 125 N. Market, Wichita Kansas, 67202

COMMENTS

Surface Casing: Set 20" X 53#/ft conductor to 40' with 4 yards of grout, Ran 12 joints of new 10 3/4" X 32.75#/ft casing to 326' KB with 300 sx Class A, 2% gel, 3% cc, Cement did circulate.
Ran ----- 7"

Bit Record: #1 14 3/4" HTC in at 40', out at 330', 3.75 hours.

Gas Detector: Woolsey Operating Co. Gas Trailer #2
Mud System: Mud-Co. Brad Bortz, Engineer

INFO

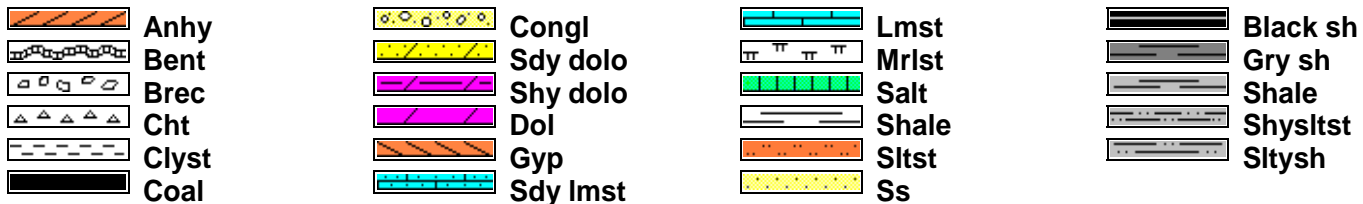
Bit Record: 1) 17 1/2" RR RT, 2) 12 1/4" RR RT, 3) 8 3/4" JZ PDC, 4) 8 3/4" RTC DSX 616, 5) 8 3/4" RTC R23A PD.H, 6)

Gas Detector: Woolsey Operating, Gas Trailer #2
Mud Program: Mud-Co. Brad Bortz, Engineer

CREWS

Tool Pusher: Mitch Sovia, Relief: Sammy Fry
Drillers: (12 hour tours, 7 on 7 off) Days: Johnny Stone, David Herring, Evening: Terry Slack, Jeffery Meyers

ROCK TYPES



ACCESSORIES

MINERAL

- Anhy**
- Arg**
- Bent**
- Bit**
- Brecfrag**
- Calc**
- Carb**
- Chtdk**
- Chtlt**
- Dol**
- Ferrpel**
- Ferr**
- Glau**
- Gyp**
- Marl**
- Nodule**
- Phos**
- Pyr**
- Salt**
- Sandy**
- Silt**

FOSSIL

- Algae**
- Amph**
- Belm**
- Bioclst**
- Brach**
- Bryozoa**
- Cephal**
- Coral**
- Crin**
- Echin**
- Fish**
- Foram**
- Fossil**
- Gastro**
- Oolite**
- Ostra**

STRINGER

- Anhy**
- Arg**
- Bent**
- Coal**
- Dol**
- Gyp**
- Ls**
- Mrst**
- Sltst stringer**
- Ssstrg**
- Carbsh**
- Clystn**
- Dol**

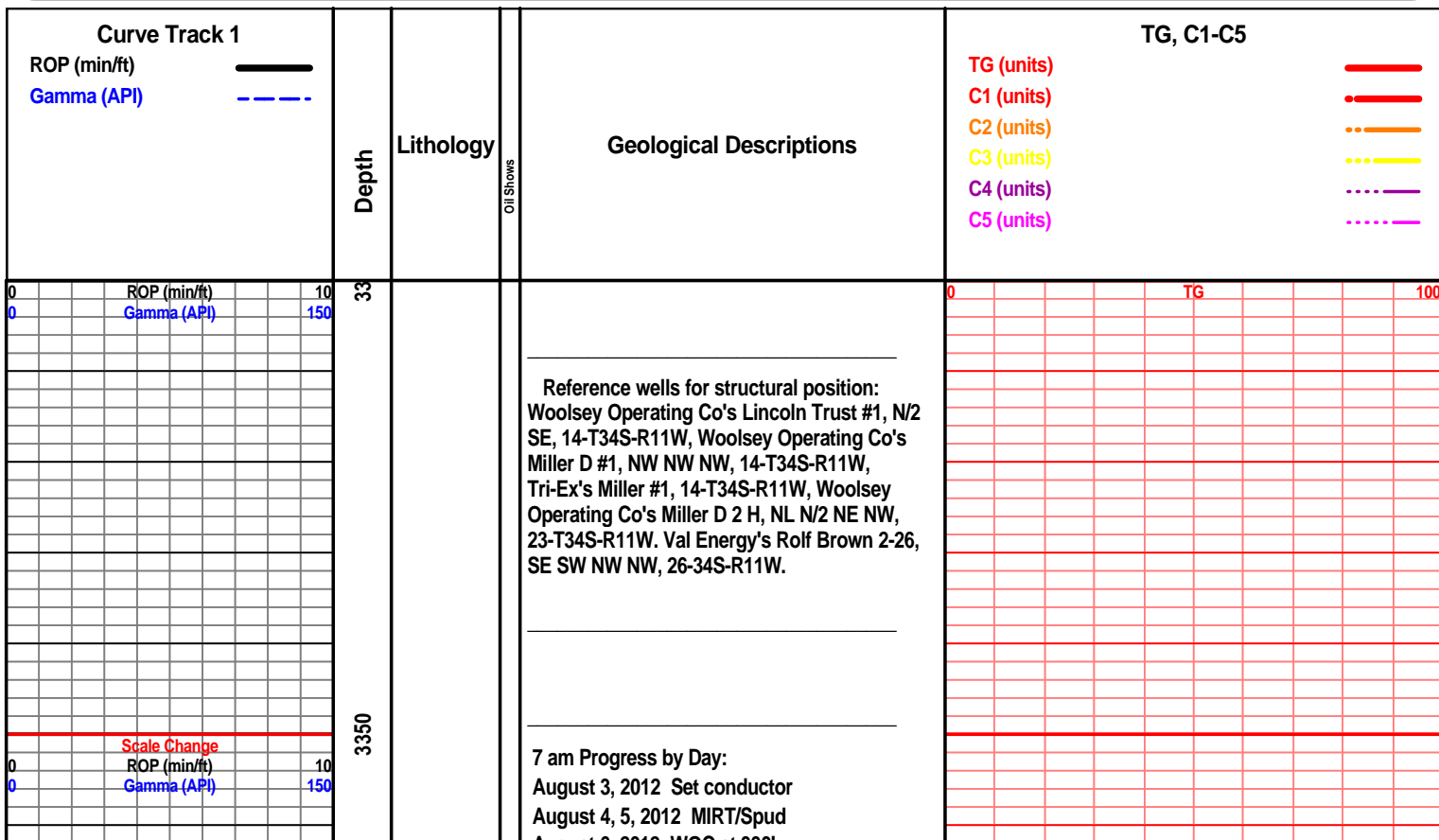
TEXTURE

- Boundst**
- Chalky**
- Cryxln**
- Earthy**
- Finexln**
- Grainst**
- Lithogr**
- Microxln**
- Mudst**
- Packst**
- Wackest**

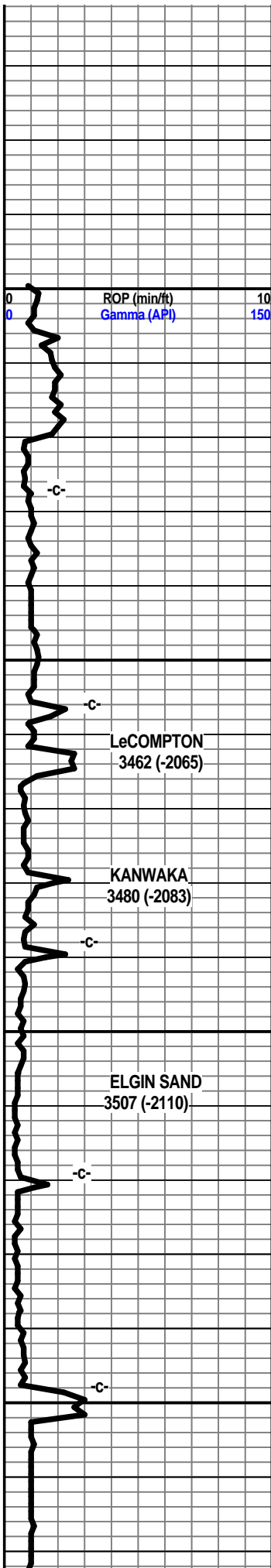
ACCESSORIES

- Pelec**
- Pellet**
- Pisolite**
- Plant**
- Strom**
- Fuss**
- Oomoldic**

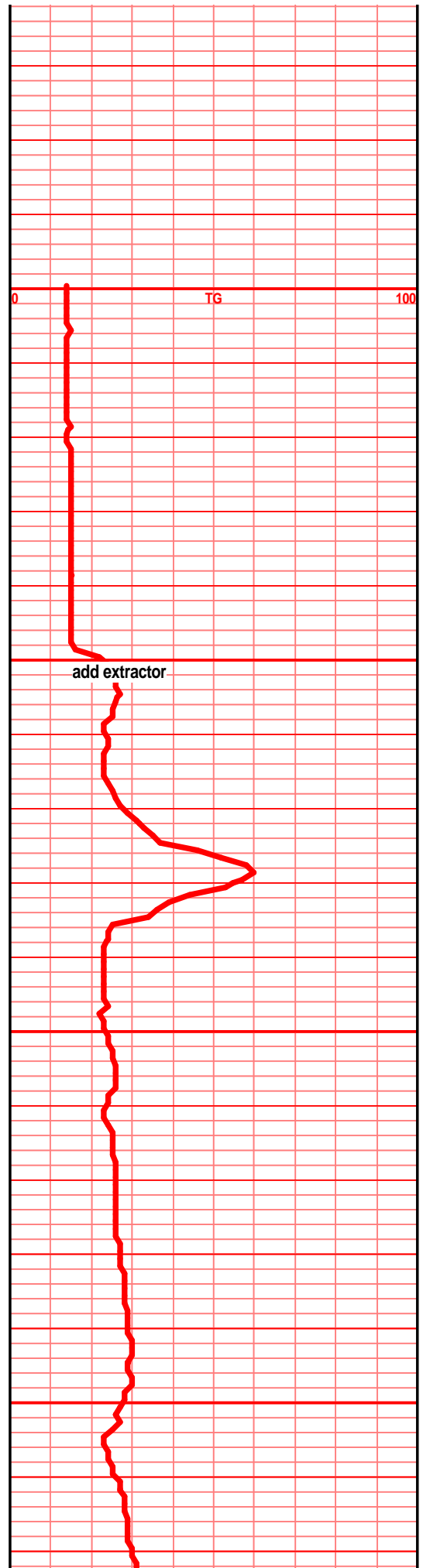
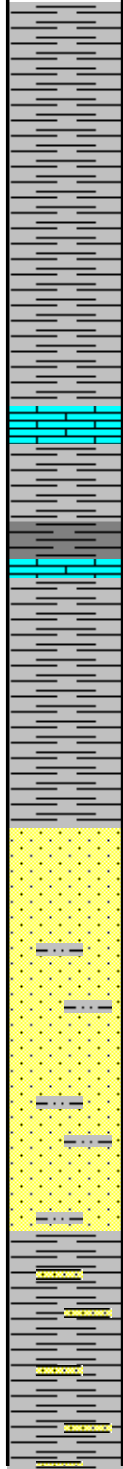
- Grysh**
- Gryslt**
- Lms**
- Sandylms**
- Sh**
- Sltstn**

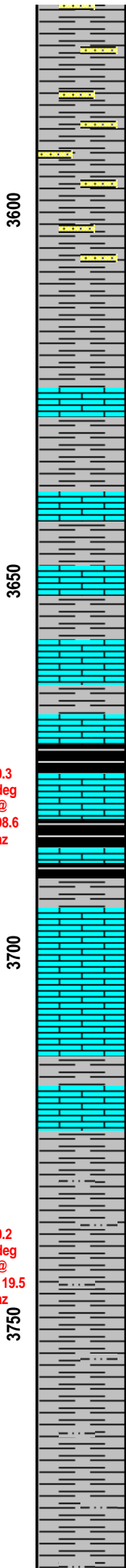
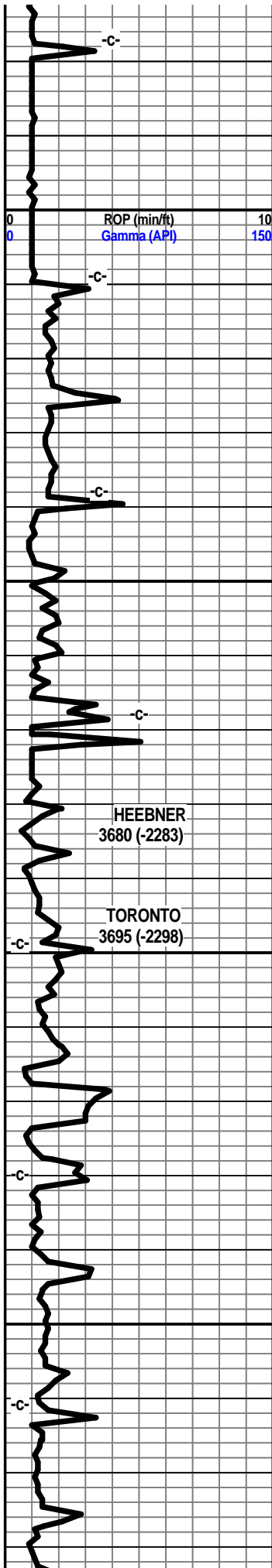


August 6, 2012 WOC at 330'
 August 7, 2012 Nipple up BOP at 740'
 August 8, 2012 1050'
 August 9, 2012 Drilling at 1850'
 August 10, 2012 Drilling at 2576'
 August 11, 2012 Drilling at 3020'
 August 12, 2012 Drilling at 3660'
 August 13, 2012 TIH w/bit at 4003'
 August 14, 2012 Drilling at 4361'



3400
3450
3500
3550





sst lt gry, f vf grnd, sub ang, silty, gritty, arg, gd inter gran por, soft fria, blk ang clstrs. shl gry silty sndy, clay fill

shl gry silty sndy gritty, sst gry lt gry, f vf grnd, soft, fria, blk ang clstrs, clay fill, silty arg

shl gry silty sndy gritty, sst gry lt gry, f vf grnd, soft fria blk ang clstrs, arg, clay fill, silty

shl gry lt med gry, silty gritty,

shl gry drk gry, silty gritty, lst tan brn vf xln dns hrd blk arg

shl gry drk brn blk, flood blk carb shl

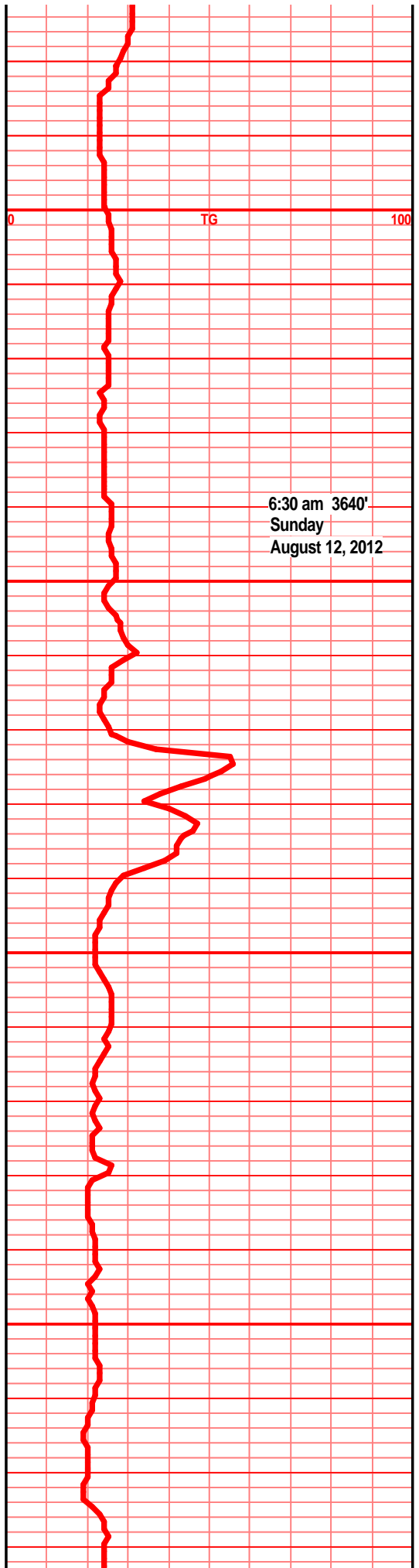
shl gry lt gry silty, lst wht off wht crm f xln sub chlky, gran, gritty, tr sndy text, foss frags, tr soft,

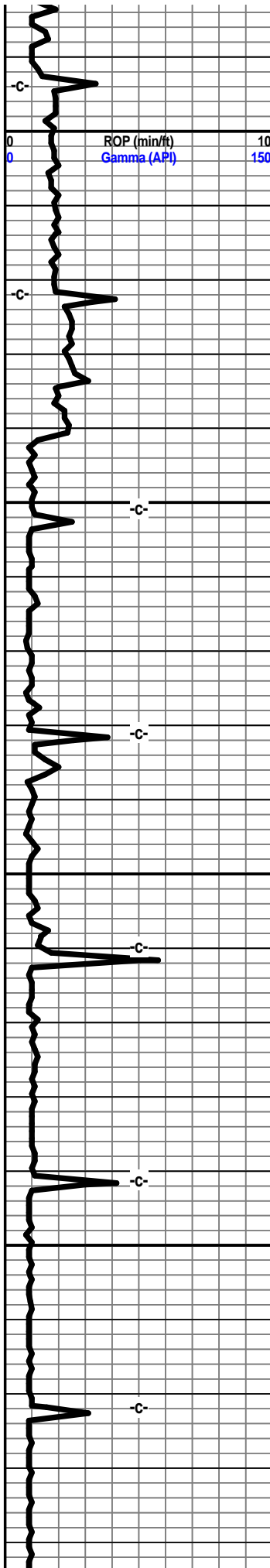
lst wth off wht tan, f xln gran gritty, sub chlky tr foss frags, tr sndy text, soft, tr foss frags

shl gry med gry, silty gritty, tr sndy, mic

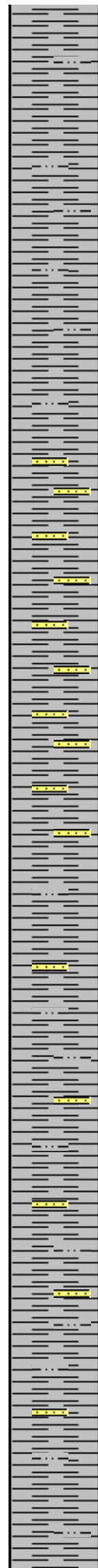
shl gry med gry silty, gritty, mic, tr blk carb plant foss flks

shl gry med gry silty soft gritty





0.2 deg @ 121.7 az
 0.2 deg @ 114.2 az
 0.2 deg @ 99.0 az
 0.5 deg @ 155.4 az



shl gry med gry soft silty tr gritty, plant flks, carb flks

 shl gry drk/med gry, soft, muddy, silty, blk carb plant frags,

 shl gry med lt gry silty gritty, sndy in prt, carb foss frags

 shl gry med gry lt gry, silty gritty sndy, sst lt gry f vf grnd, sub ang well srted, fria, blk carb fill, arg, clay fill

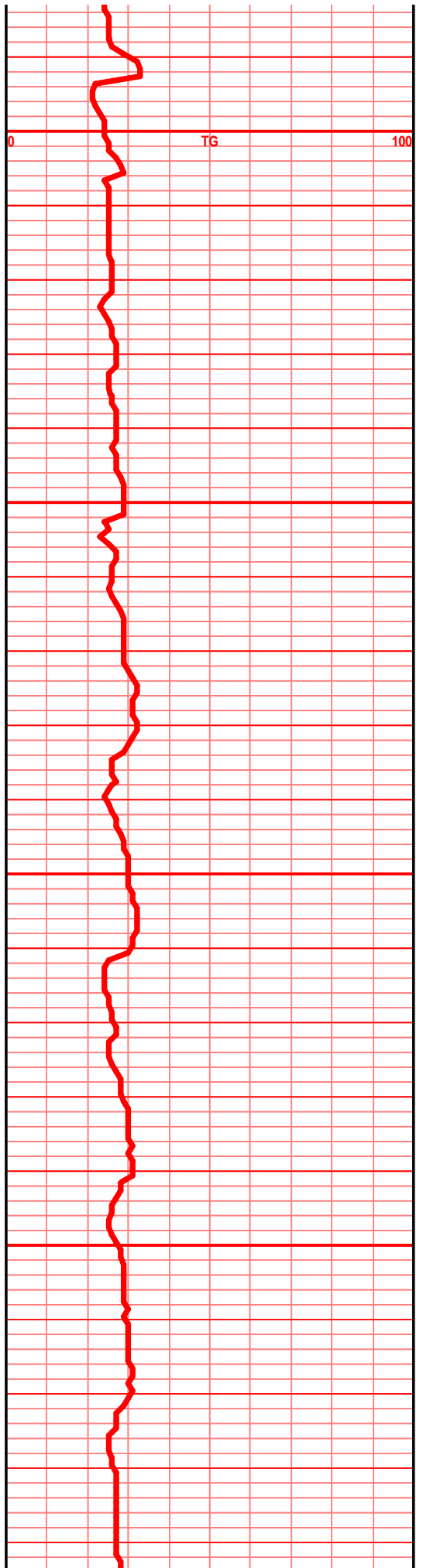
 sh gry lt med gry, silty, gritty sndy in prt, sst lt gry f grnd, sub ang, prly srted, arg clay fill, blk carb fill

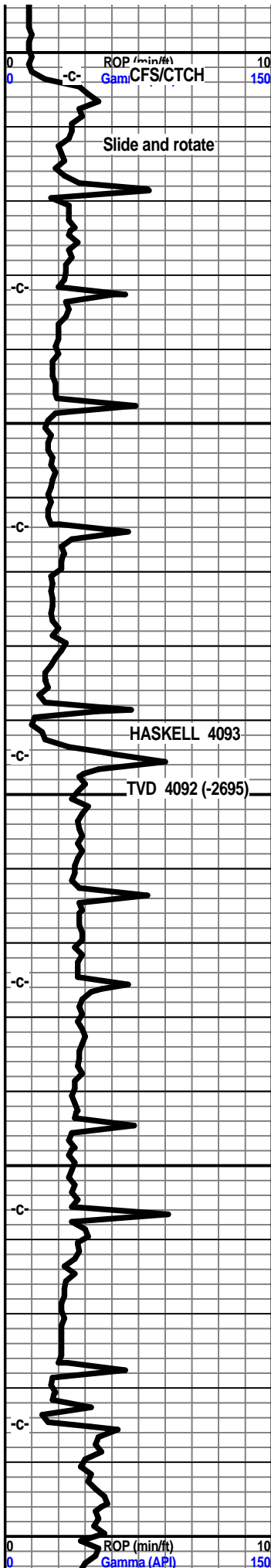
 shl gry med/lt gry silty sndy gritty. sst lt gry f grnd, sub ang grains, sub fria, prly srted, arg mic, carb flks, tr plant foss

 shl gry med/lt gry silty gritty sndy, sst aa

 shl gry med gry soft muddy soft silty gritty tr sndy, sst lt gry green silty arg, f vf grnd, sub ang grains, sub fria, blk clstrs, blk carb fill, tr glau

 shl gry med/lt gry silty gritty sndy aa, blk carb strks, snd grn inclu, glau, sst aa, arg clay fill tr glau





4000
2.4 deg @ 163.1 az
4050
4.7 deg @ 166.1 az
4100
10.5 deg @ 173.9 az
4150
16.3 deg @ 176.5 az
200
19.1 deg @ 176.5 az



shl gry med drk gry, soft silty, muddy in prt,

shl gry drk gry muddy silty

shl gry drk gry silty soft muddy spls wsh drk grn

shl gry drk gry silty, muddy, soft

shl gry drk gry blk splinters, muddy, spls wsh drk gry

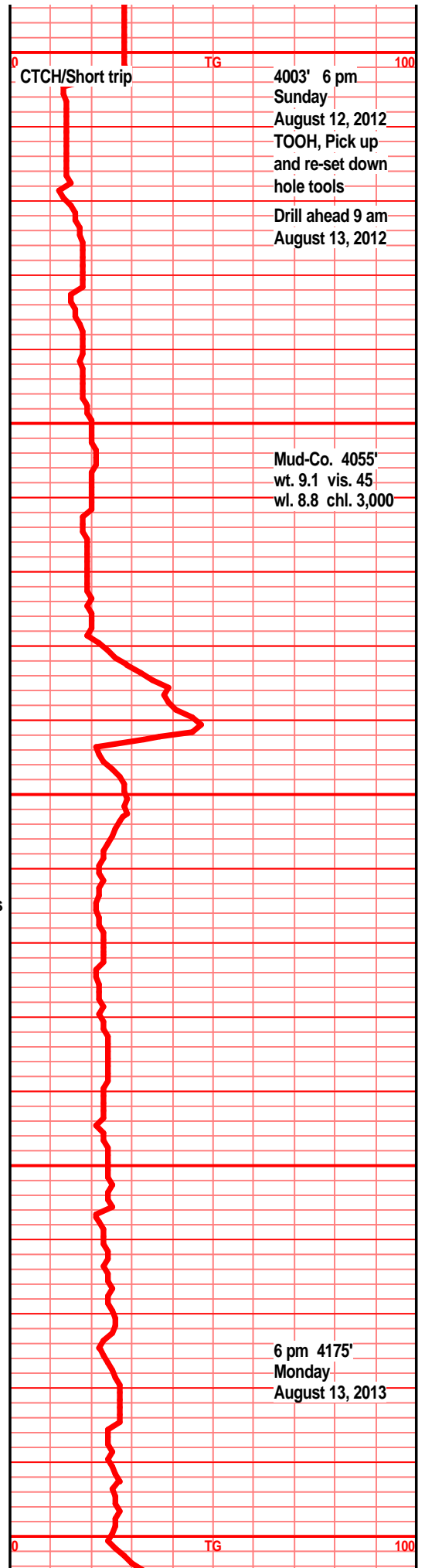
shl gry drk gry blk, 1st drk tan brn f sli med xln blk ang dns, crsly foss in prt, foss frags, tr crs calc xln fill

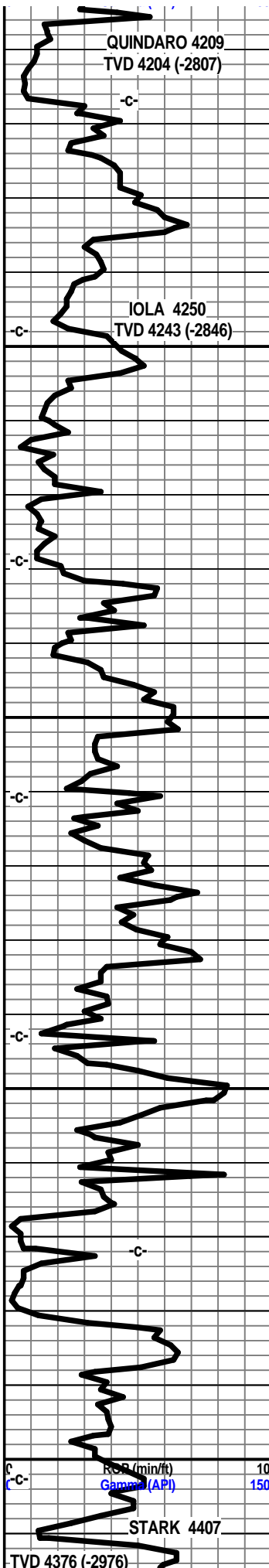
shl gry drk med drk gry, soft muddy, spls wsh drk gry/blk

shl gry drk gry silty, slick splintery, soft muddy, spls wsh drk gry

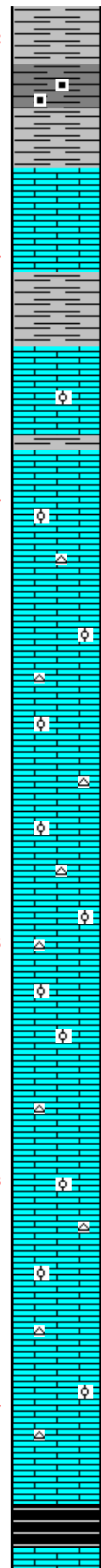
shl gry drk gry/blk silty soft

shl gry drk med drk gry soft muddy, spls wsh arv/dri arv





177.2 deg @ 177.7 az
21.8 deg @ 177.7 az
24.9 deg @ 177.4 az
28.3 deg @ 178.1 az
31.5 deg @ 179.5 az
34.9 deg @ 180.8 az
37.5 deg @ 181.4 az



shl drk gry blk, blk semi carb is prt, tr gas bubs, filmy cond

lst crm buff tan, f sli med xln, sub chlky foss frags, calc xln fill, much gry drk gry blk semi carb shl

lst wht crm buff lt tan f sli med xln flky sub chlky, gran in prt, foss frags, foss ool, calc xln fill, chrt wht shrp frsh opa

lst wth off wht tan tr buff, f sli med xln, gran blk sub chlky foss frags, foss ool, calc xln fill, chrt wht opa shrp frsh

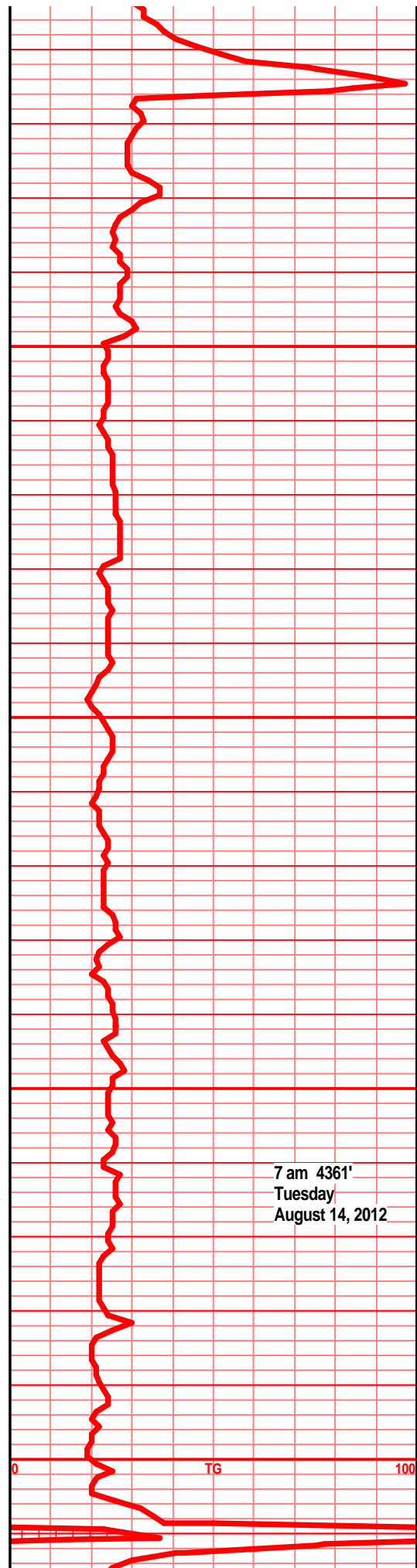
lst wht off wht lt tan tr buff f sli med xln, gran sub chlky, foss frags, calc xln fill, chrt wht shrp frsh opa

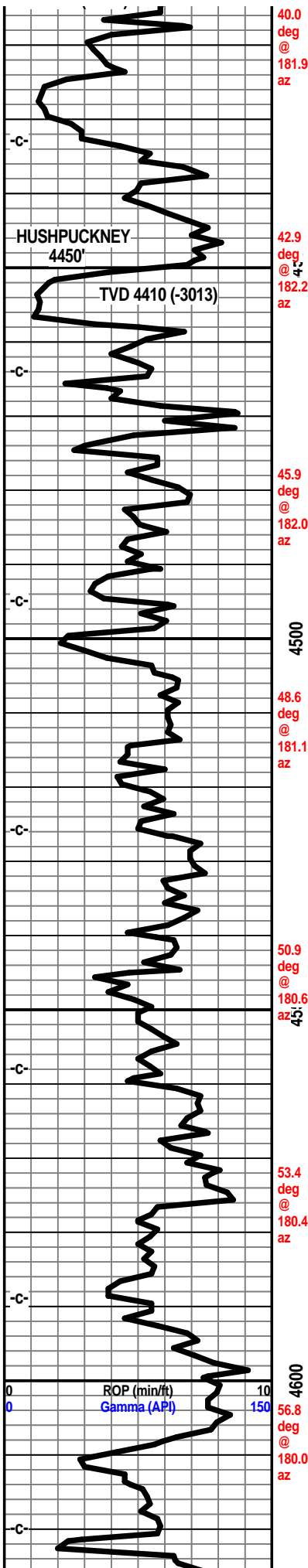
lst tan buff crm tr drk tan, f sli med xln, gran, tr soft, sub chlky to chlky, foss frags, calc xln fill, chrt wht/lt gry shrp frsh opa

lst off tan crm buff lt brn in prt, f sli med xln blk ang sub chlky, tr chlky, foss frags, calc xln fill, tr chrt tan lt gry/brn shrp frsh opa blk ang

lst crm off wht tan f sli med xln, blk ang sub chlky foss frags, tr foss ool, calc xln fill, chrt tan lt gry shrp frsh opa

lst crm tan buff f sli med xln gran soft chlky to sub chlky foss frags, tr foss ool, gran, calc xln fill





shl gry dry gry, much blk carb shl, grsy, wxy gas bubs, lst tan lt brn f xln gran dns hrd blk arg, semi chlky, tr micro foss frags,

lst off wht lt gry f xln blk ang dns hrd blk sub chky, foss frags, tr foss ool, foss mold por, calc xln fill, tr chrt lt gry wht opaqr shrp frsh

flood blk carb shl, wxy, grsy, abun gas bubs, lst tan lt gry/brn f vf xln dns hrd blk ang arg, tr micro foss, blk calc xln fill

lst crm tan buff lt brn f vf xln dn shrd blk ang sli sub chlky in prt, micro foss frags, calc xln fill, chrt tan brn shrp frsh opaqr foss

sh gry drk gry blk, blk carb swy grsy, tr gas bub, lst tan crm brn f vf xln dns hrd blk ang micro foss calc xln fill, tr chrt aa

shl gry drk gry brn, lst tan brn f vf lxn dns hrd blk ang arg, tr micro foss, calc fill frags,

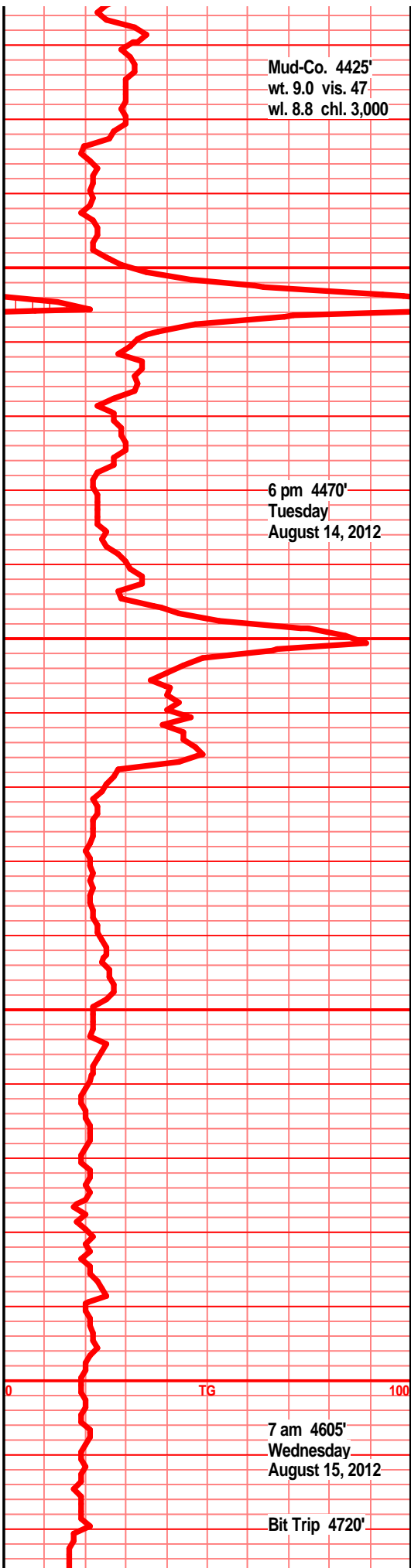
shl gry green silty gritty, tr sndy in prt, lst crm buff tan tr lt brn f vf xln dns sub chlky micro foss frags, tr chrt tan gry shrp frsh opaqr

sh lgr green silty gritty soft, lst tan lt brn buff f vf xln dns hrd blk sub chlky micro foss frags, tr chrt tan shrp frsh

lst crm tan buff off wht, f vf xln dns hrd blk ang arg, silty, tr foss frags, calc xln fill, tr chrt tan brn shrp frsh foss opaqr

lst crm buff tan f vf xln sub chlky micro foss frags, tr chrt wht shrp frsh, shls, tan brn gry calc

shl gry brn blk, silty calc, lst tan buff, tan brn f xln blk ang hrd arg, micro foss frags, tr chrt



tan brn frsh opa

1st crm tan buff, tan brn f vf xln blk ang hrd, sub chky in prt, tr foss frags, much shl poor sample

61.1 deg @ 180.1 az

4650

4700

4750

4800

-c-

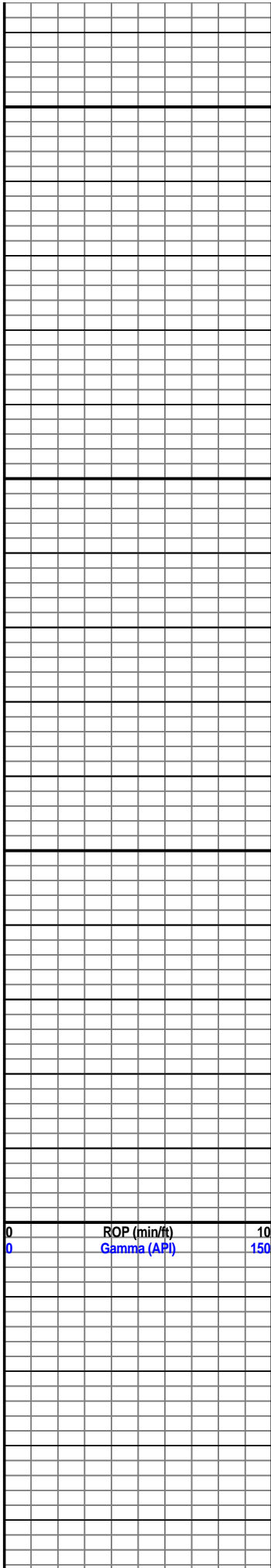
-c-

ROP (min/ft) 10
Gamma (API) 150



7 am 4672'
Thursday
August 16, 2012

TG 100



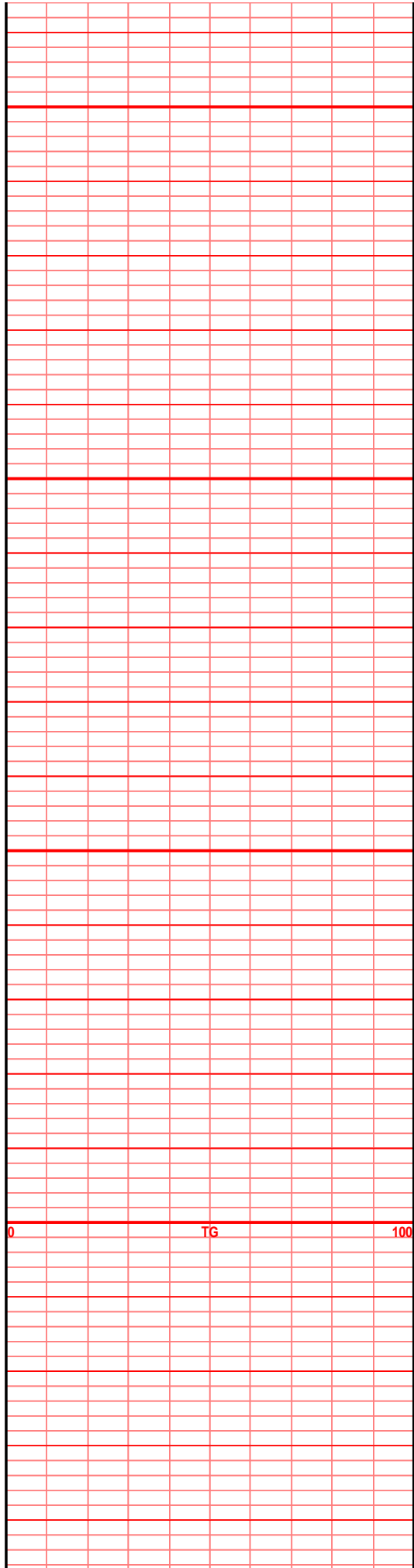
4850

4900

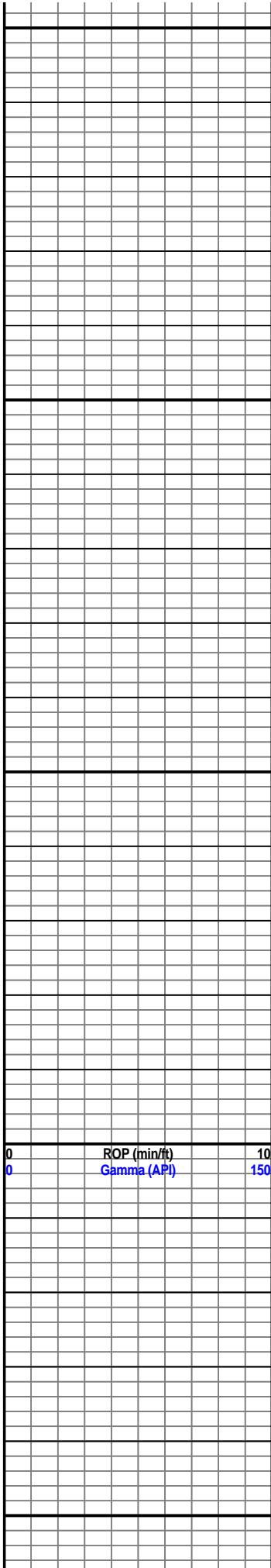
4950

5000

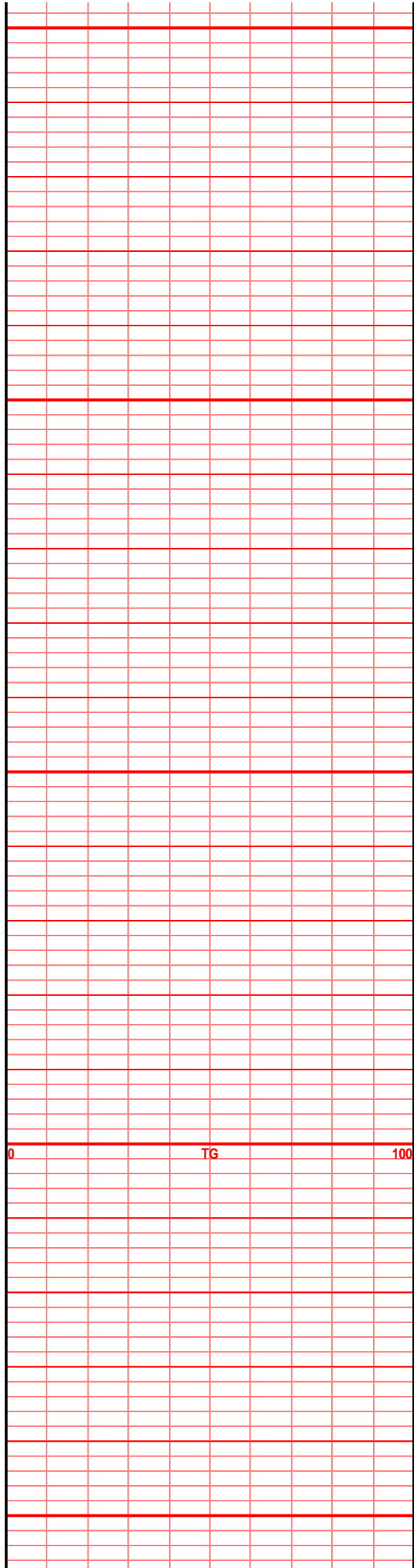
0 ROP (min/ft) 10
0 Gamma (API) 150



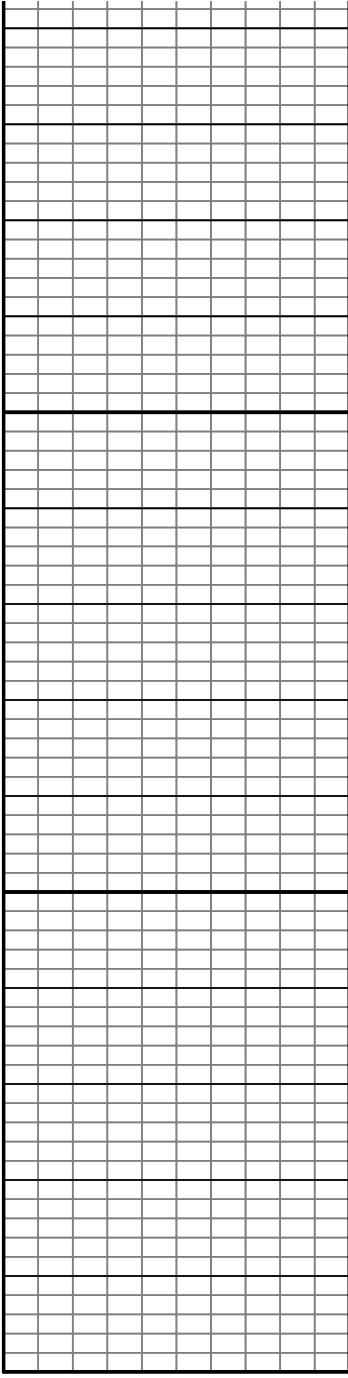
0 TG 100



5050
5100
5150
5200
5250



0
100

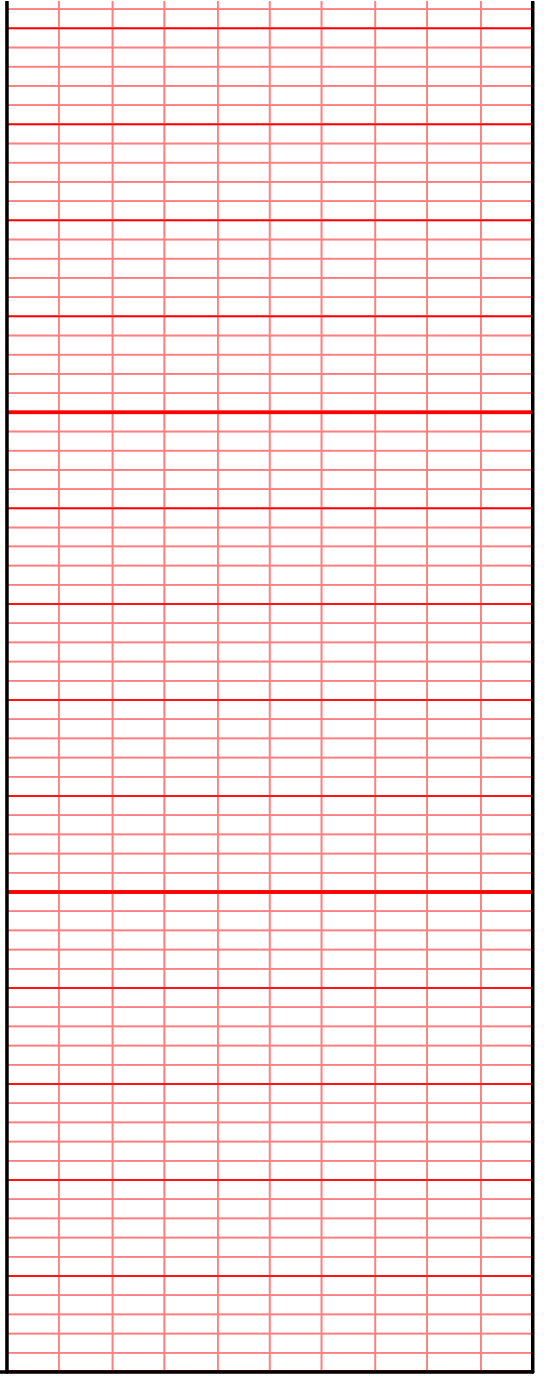


A grid of graph paper with a black border, divided into four vertical sections by three vertical lines. The grid is composed of small squares.

00

5350

5300



A grid of graph paper with a black border, divided into two vertical sections by one vertical line. The grid is composed of small squares, and the lines are colored red.