

Fall & Associates
 State and Elevation Service
 719 W. 5th Street
 P.O. Box 484
 Concordia, KS. 66901
 1-800-536-2921

Date 8-14-12

Invoice Number 0810121

MURFIN DRILLING

1-14

Poore

Operator

Number

Farm Name

Rawlins-KS

14

S

36w

948

990' FNL ~~990'~~ FWL

County-State

S

T

R

Location

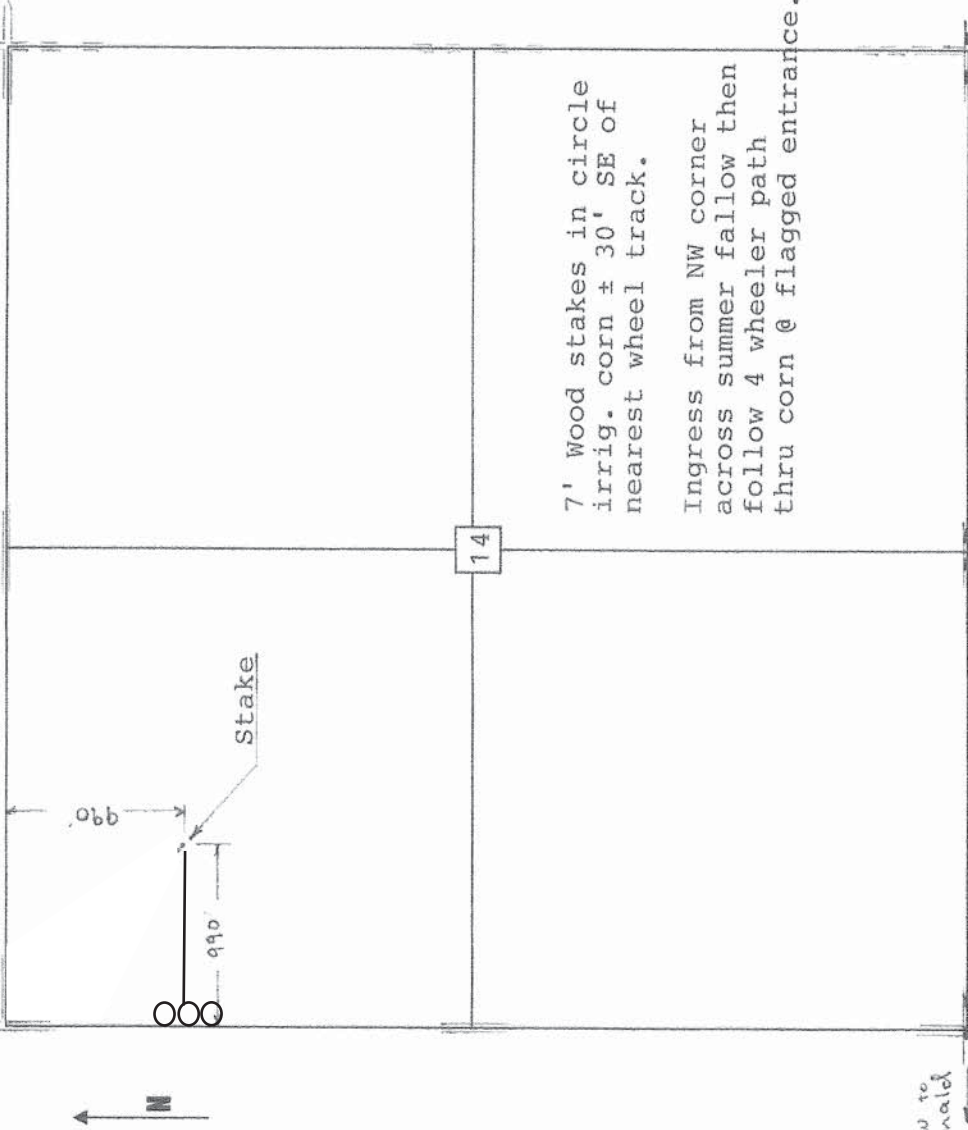
Murfin Drilling
 250 N. Water, Ste. 300
 Wichita, KS. 67202

Moved the location 42'
 west to get on outside
 of the irrigation wheel
 track

Elevation 3317 Gr

Ordered By: Shauna

Scale 1"=1000'



2 mi. W to
 McDonal