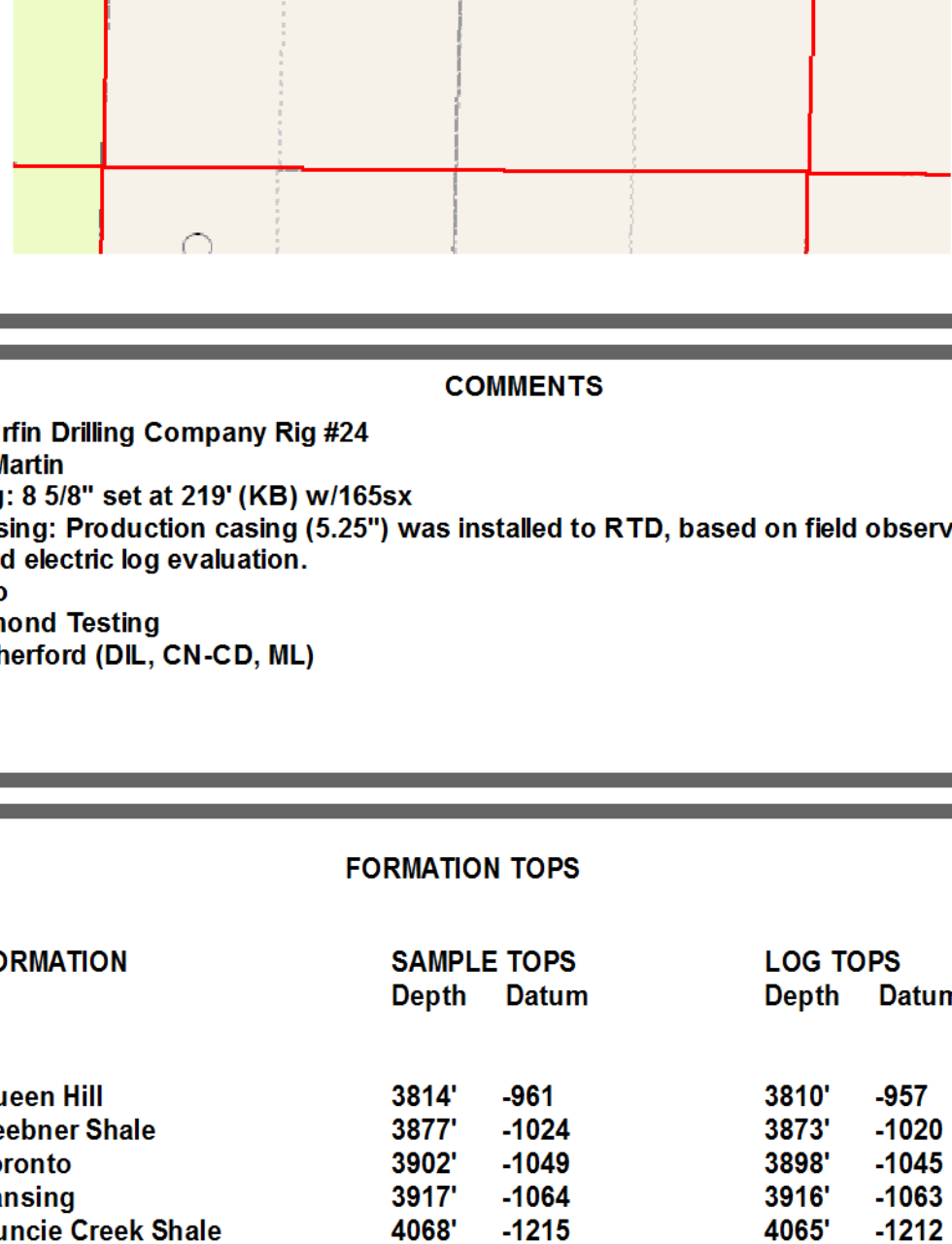


Scale 1:240 (5"=100') Imperial  
Measured Depth Log

Well Name: **Glennis #1-27**  
 Location: **2141' FSL, 541' FEL, 27-13S-31W, Gove County, Kansas**  
 License Number: **API: 15-063-22030** Region: **Gove County**  
 Spud Date: **08/06/2012** Drilling Completed: **08/16/2012**  
 Surface Coordinates: **Lat: 38.8940218**  
**Long: -100.7438924**  
 Bottom Hole Coordinates: **Vertical hole**  
 Ground Elevation (ft): **2848'** K.B. Elevation (ft): **2853'**  
 Logged Interval (ft): **3800'** To: **RTD** Total Depth (ft): **4630'**  
 Formation: **Mississippian at RTD**  
 Type of Drilling Fluid: **Chemical**

Printed by MUD.LOG from WellSight Systems 1-800-447-1534 www.WellSight.com

**GEOLOGIST**  
 Name: **Kent R. Matson**  
 Company: **Matson Geological Services, LLC**  
 Address: **33300 W. 15th Street S.  
 Garden Plain, Kansas 67050  
 316-644-1975**

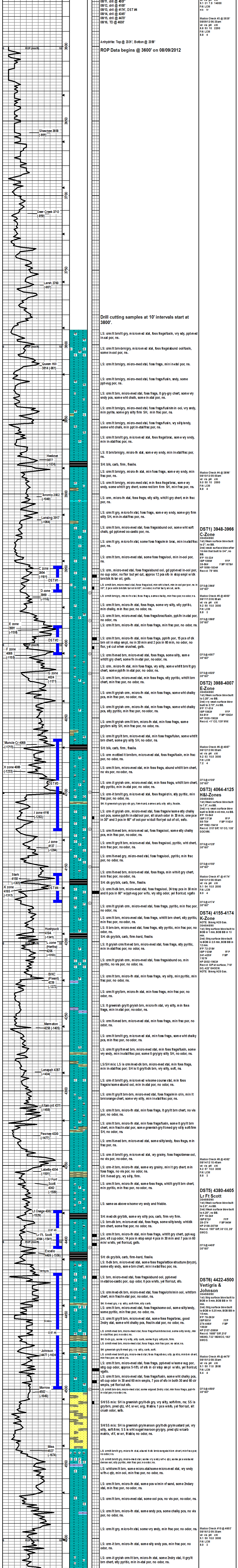


**COMMENTS**

Contractor: **Murfin Drilling Company Rig #24**  
 Pusher: **Tony Martin**  
 Surface Casing: **8 5/8" set at 219' (KB) w/1655x**  
 Production Casing: **Production casing (5.25") was installed to RTD, based on field observations of drill cuttings, DST results and electric log evaluation.**  
 Mud by: **MudCo**  
 DST's by: **Diamond Testing**  
 Logs by: **Weatherford (DIL, CN-CD, ML)**  
 RTD = **4630'**  
 LTD = **4626'**

**FORMATION TOPS**

FORMATION	SAMPLE TOPS		LOG TOPS	
	Depth	Datum	Depth	Datum
Queen Hill	3814'	-961	3810'	-957
Heebner Shale	3877'	-1024	3873'	-1020
Toronto	3902'	-1049	3898'	-1045
Lansing	3917'	-1064	3916'	-1063
Muncie Creek Shale	4068'	-1215	4065'	-1212
Stark Shale	4158'	-1305	4153'	-1300
Hushpuckney Shale	4194'	-1341	4189'	-1336
Marmaton	4258'	-1405	4255'	-1402
Upper Fort Scott	4362'	-1509	4356'	-1503
Little Osage Shale	4382'	-1529	4377'	-1524
Excello Shale	4409'	-1556	4403'	-1550
Johnson Zone	4477'	-1624	4471'	-1618
Morrow	4502'	-1649	4497'	-1643
Mississippian	4541'	-1688	4536'	-1683
RTD	4630'	-1777		
LTD			4626'	-1773



RTD 4630', -1777  
LTD 4626', -1773