

Fall & Associates

State and Elevation Service

719 W. 5th Street

P.O. Box 484

Concordia, KS. 66901

1-800-536-2921

Date 8-14-12

Invoice Number 0810121

MURFIN DRILLING

1-14

Poore

Operator

Number

Farm Name

Rawlins-KS	14	S	3s	R	36w	970	970	970	970
County-State			T			Location			
						990' FNL	990' FWL		

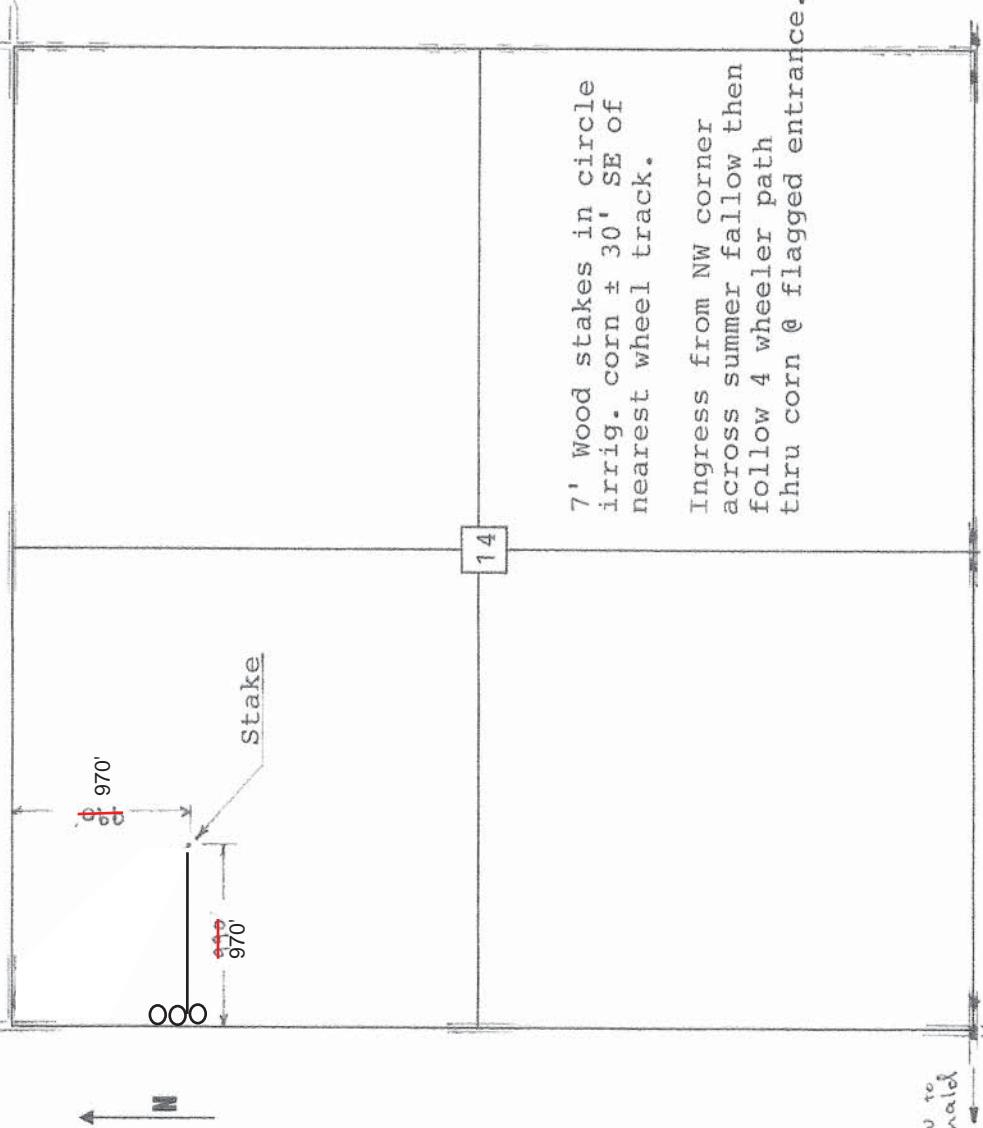
Murfin Drilling
250 N. Water, Ste. 300
Wichita, KS. 67202

Moved the location 20' north & 20' west to get on outside of the irrigation wheel track

Elevation 3317 Gr

Ordered By: Shauna

Scale 1"=1000'



2 mi. W to McDonal