

# GEOLOGIST'S REPORT

## DRILLING TIME AND SAMPLE LOG

### BACH OIL PRODUCTION

WELL: DON #1

LOC.: 1424' FSL & 1896' FWL  
 SEC. 15-1-19W  
 PHILLIPS COUNTY, KANSAS  
 API: 15-147-20683-00-00

DRILLING CONTR.: MURFIN RIG #16  
 SPUD: 06-26-12 COMP: 07-01-12  
 MUD UP: 2800' TYPE MUD: CHEM.  
 DRILL TIME: 3050 to' RTD  
 RTD: 3665' LTD: 3664'  
 SAMPLES SAVED: 3050'-RTD  
 GEOLOGIST: ROBERT J. PETERSEN

### ELEVATION

KB: 2165  
 GL: 2160  
 LOG MEASURED  
 FROM: KB

### SURFACE CASING

8 5/8" Set @ 233'  
 W/170 SX 3% CC 2%gel

### PRODUCTION CASING

N/A D&A

### WELL LOG SURVEYS

DIL/CDL

### ELECTRIC LOG TOPS

FORMATION	DEPTH	DATUM	POSITION
Stone Corral	1810	+355	-11
Base Stone Corral	1833	+332	-14
Topeka	3157	-992	-17
Heebner	3365	-1200	-5
Toronto	3395	-1230	-10
Lansing	3412	-1247	-10
BKC	3590	-1425	-12
	3632	-1467	-10

Note: Sample tops are 2 feet lower than electric log tops.

### REFERENCE WELL:

Bach Oil Production  
 Pete's Pond #1  
 1750' FSL & 2416' FWL  
 14-1-19W

### REMARKS AND RECOMMENDATIONS

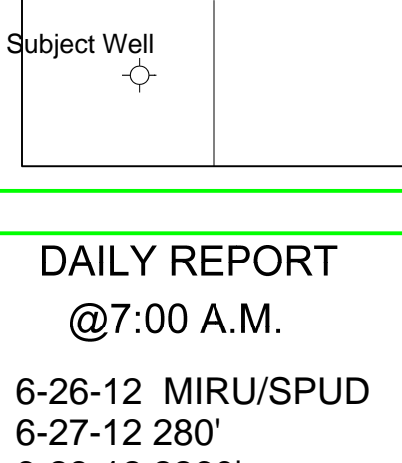
Due to the negative DST results this well was plugged and abandoned.

Respectfully submitted,

*Robert J. Petersen*  
 Robert J. Petersen

### DAILY REPORT @7:00 A.M.

6-26-12 MIRU/SPUD  
 6-27-12 280'  
 6-28-12 2260'  
 6-29-12 3120'  
 6-30-12 3478' DST #1  
 7-01-12 3665' LOGGING



### DAILY REPORT @7:00 A.M.

6-26-12 MIRU/SPUD  
 6-27-12 280'  
 6-28-12 2260'  
 6-29-12 3120'  
 6-30-12 3478' DST #1  
 7-01-12 3665' LOGGING

