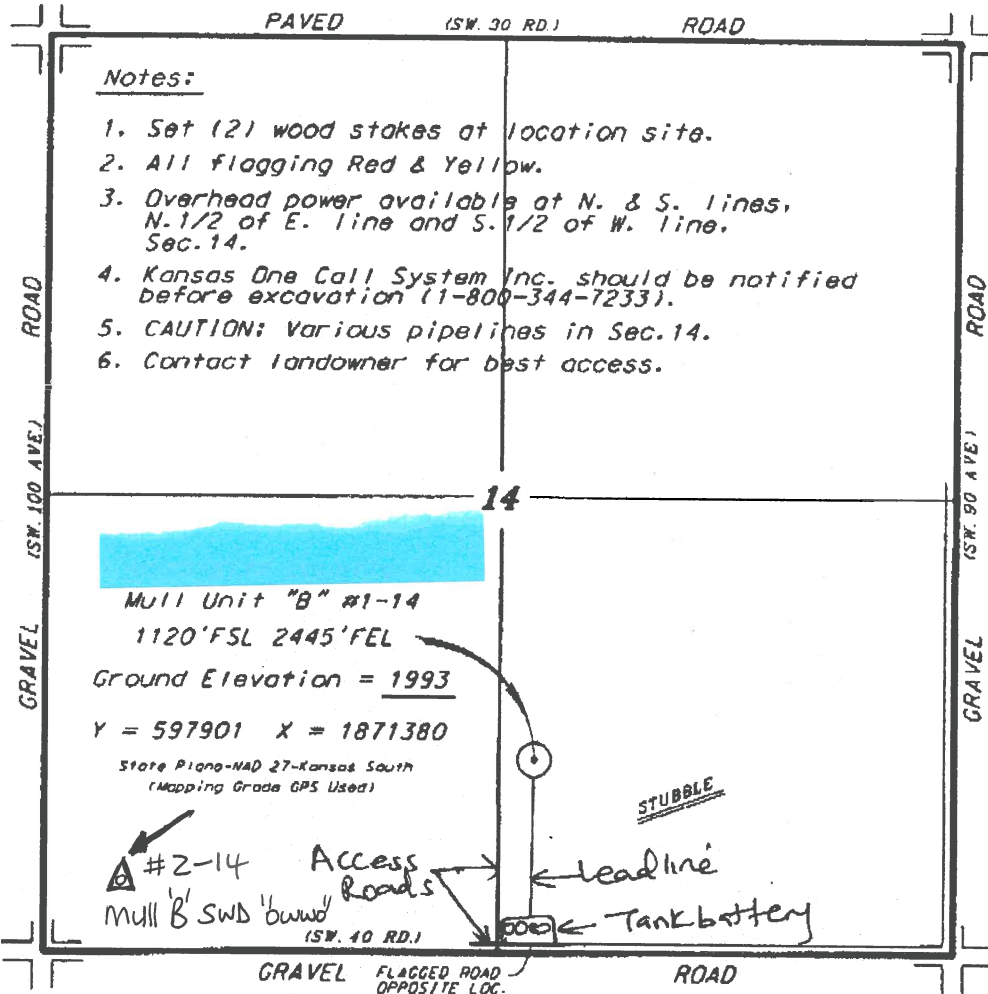
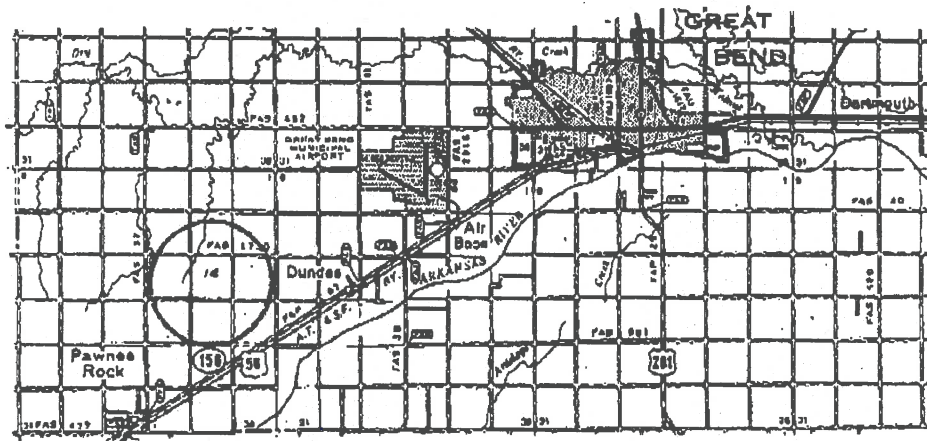
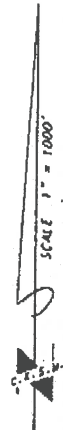


F.G. HOLL COMPANY, LLC
 MULL UNIT LEASE
 SE. 1/4, SECTION 14, T20S, R15W
 BARTON COUNTY, KANSAS



*Ingress and egress to location as shown on this plan is for usage only and may not be legally deemed for public use. Contact landowner, tenant and county road department for access.



* Controlling data is based upon the best maps and photographs available to us and upon a regular section of land containing 640 acres.
 * Approximate section lines were determined using the normal standard of care of oilfield surveyors practicing in the state of Kansas. The section corners, which establish the precise section lines, were not necessarily located, and the exact location of the wellsite location in the section is not guaranteed. Therefore, the operator, assuming this service and accepting this plan and all other services relying thereon agree to hold Central Kansas Oilfield Services, Inc., its employees and employees harmless from all losses, costs and expenses and sole liabilities resulting from any liability from incidents or consequences of damage.
 * Elevations derived from National Geodetic Vertical Datum.

Date July 24, 2012