

KEVIN L. KESSLER
CONSULTING PETROLEUM GEOLOGIST
(316) 522-7338

OPERATOR : MULL DRILLING COMPANY INC.
LEASE : HENDERSON - LOGAN WELL # : 1 - 8
LOCATION : 1716' FNL & 1221' FEL
SEC: 08 TWP : 16 S RGE : 23 W
COUNTY : NESS STATE : KANSAS

ELEVATION
KB : 2496
GL : 2491
MEASUREMENTS FROM
KB

CONTRACTOR : WW DRILLING RIG # 10
COMM : 07 / 26 / 2012 **COMP : 08 / 03 / 2012**
RTD : 4550 **LOG TD : 4552**
SAMPLES SAVED FROM : 3700 **TO : RTD**
GEOLOGICAL SUPERVISION FROM : 3700 **TO : RTD**
MUD UP : 3600 **TYPE MUD : CHEMICAL**

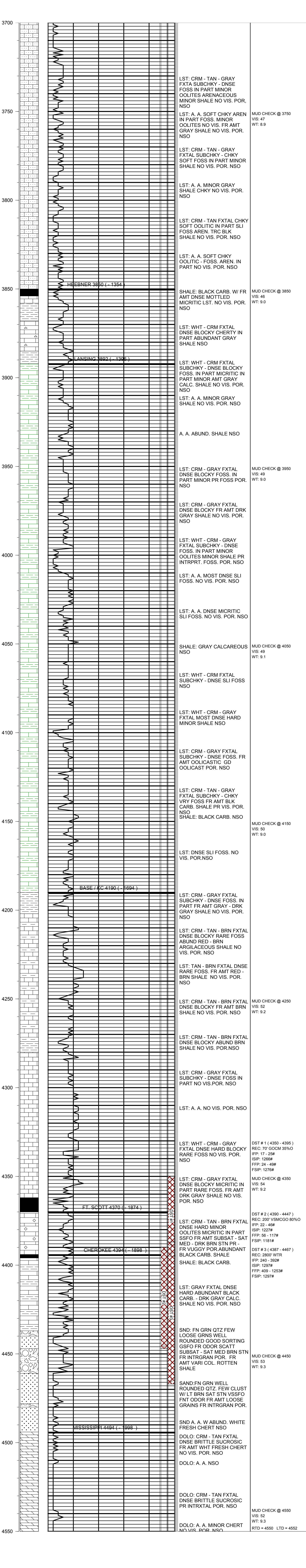
CASING RECORD
SURFACE :
8 5/8" @ 205'
PRODUCTION :
5 1/2" @ 4550'

ELECTRICAL SURVEYS:
DIL
CNL / CDL
MICRO
SONIC

FORMATION	TOP	LOG	DATUM	TOP	SAMPLE	DATUM	STRUCT. COMP.
HEEBNER	3850		- 1354	3850		- 1354	+ 23
LANSING	3892		- 1396	3892		- 1396	+ 21
BASE/KC	4190		- 1694	4190		- 1694	+ 23
FORT SCOTT	4370		- 1874	4370		- 1874	+ 27
CHEROKEE	4394		- 1898	4394		- 1898	+ 23
MISSISSIPPI	4494		- 1998	4494		- 1998	+ 05

REFERENCE WELL FOR STRUCTURAL COMPARISON :

W. E. CARL # 8 - 1 HENDERSON SEC 08 - T 16 S - R 23 W NESS COUNTY KANSAS



COMMENTS:

5 1/2" PRODUCTION CASING WAS SET TO FURTHER EVALUATE THE PRODUCTIVITY OF THIS WELL

KEVIN L. KESSLER