



Rider Consulting Petroleum Geologist

Don V. Rider, Geologist...cell: 316-706-7199

Office 316 729-0047...8910 W. Central Park Ct...Wichita, KS 67205

October 18, 2010

WELL RESUME

Operator: Gore Oil Company

API: 15-163-23893

Well Name: Ray Schindler # 6

Field: Dopita

Location: 660'FSL, 990' 'FWL

Sec.17,Twp08S Rge.17W

County: Rooks

State: Kansas

Spud Date: 10-09-10

Drilling Completed: 1016-10

Elevations: GL- 2086'

KB- 2094'

Total Depth: Drillers TD- 3475'

Loggers TD-3478'

Contractor: Maverick Drilling LLC.Rig 108

Well Site Geologist: Don V. Rider

Mud Logging Equipment

Samples: Unlagged samples were caught by drilling crew from 2700'-TD.

Mud Company: Andy's Mud

Type Drilling Mud: Chemical

Hole Size: 12 1/4" 0-1250'; 7 7/8" 1234''-TD

Casing: 8 5/8" set @ 1234', W 400sk cement

Cores: None

DST's: Three, Trilobite Testing

Electric Logs: Log-Tech

Type Logs Run: Dual Induction & Dual Compensated Porosity Log, and
_Micro Log.

Bottom Hole Formation: Arbuckle

Well Status: It was decided by all parties concerned to Set pipe for a disposal well.

Rider Consulting Petroleum Geologist

Don V. Rider, Geologist ...cell: 316-706-7199

8910 W. Central Park Ct...Wichita, KS
67205

DAILY REPORT

Gore Oil Company

Ray Schindler # 6, 660' FSL, 990' FWL 17-8s-17w Rooks, County, KS

| <u>Date</u> | <u>Depth</u> | <u>24Hr. Ft.</u> | <u>Remarks</u> |
|-------------|--------------|------------------|--|
| 10-09-10 | | | Move in and set surface. |
| 10-10-10 | 590' | 590' | Drilling Surface Hole |
| 10-11-10 | 1234' | 644'' | Drilling. Set 1234' 8 5/8" surface pipe W/400 SK 60/40 pos cement. Anhydrite 1227'+ 655' |
| 10-12-10 | 1990' | 756' | Drilling under surface. |
| 10-13-10 | 2810' | 820' | Drilling Topeka 2792 (-910), |
| 10-14-10 | 3065' | 255' | DST # 1 Topeka, 2924'-2976' 45-45-30-60, 1 st open 2" in bucket, 2 nd open surface blow, Recovery: 85' SOCM 10% oil, IFP: 54-67, FFP: 81-73, ISIP: 587, FSIP: 590, Hydro: 1423-1399, Temp: 100. Tool slid 4' to bottom. Heebner 3003(-1121), Toronto 3024(-1142), Lansing 3043(-1161). BKC 3270' (-1388)., Arbuckle 3309 (-1427) |
| 10-15-10 | 3316' | 506' | DST # 2 3270-3316 Arbuckle 45-45-30-60, 1open 3.5" in bucket, 2 nd open, No blow, Recovery: 2'HOCM 43, mud, IFP: 55-53, FFP: 68-59, ISIP: 634, FSIP: 637, Hydro: 1655-1599, Temp: 105. |
| 10-16-10 | 3327' | 11' | DST #3 3308-3327' Arbuckle 45-45-45-60, 1 st open in bucket, 2 nd open weak blow 1/2", IFP: 16-43, FFP: 48-67, ISIP: 663, FSIP: 668, Hydro: 1684-1583, Temp: 103. Drilling to 3475' RTD. Log W/ Log Tech. |

FORMATION DATA
(Corrected to R.A. Guard Log)

10-18-10
Ray Schindler # 6

Elevation 1882'KB
1874'GI

| <u>Formation</u> | <u>Depth</u> | <u>Minus Data</u> |
|-------------------------|---------------------|--------------------------|
| Anhydrite | 1228' | +655' |
| Topeka | 2792' | - 910' |
| Heebner | 3002' | - 1120' |
| Toronto | 3024' | - 1142' |
| Lansing | 3044' | - 1162' |
| Base KC | 3270' | - 1388' |
| Arbuckle | 3308' | -1426' |

Topeka 2792-3002'

This area had an off-white gray fine crystalline Dolomitic limestone, oolitic in part, slightly fossiliferous, with fair intercrystalline & vugular porosity, w/ Fair shows free oil & stain, and fair cut fluorescence, and strong odor, Condemned by DST # 1

Toronto 3024'-3044'

This area had an off-white, gray fine crystalline limestone, chalky, no show

Lansing, Kansas City 3044'-3270'

A, B, C Zone 3044-3092'

This area had an off-white fine crystalline, fossiliferous, oolitic limestone, with fair Pinpoint vugular porosities, minor free oil and stain, slight odor.

D & E, F Zone 3100'-3150'

This area had an off-white brown fine crystalline fossiliferous, oolitic limestone, with fair vugular porosities, very minor free oil and stain, slight odor, and fair cut fluorescence.

H, I, J, K, L Zones 3164'-3270'

This area had an off-white, buff, fine crystalline, oolitic limestone, with fair intercrystalline and pinpoint vugular porosities and fair free oil and stain with good odor.

Arbuckle 3308-3475

This area had a had a gray, buff, medium crystalline dolomite, with fair intercrystalline, and vugular porosities, with fair free oil and stain, strong odor. Some very dense.

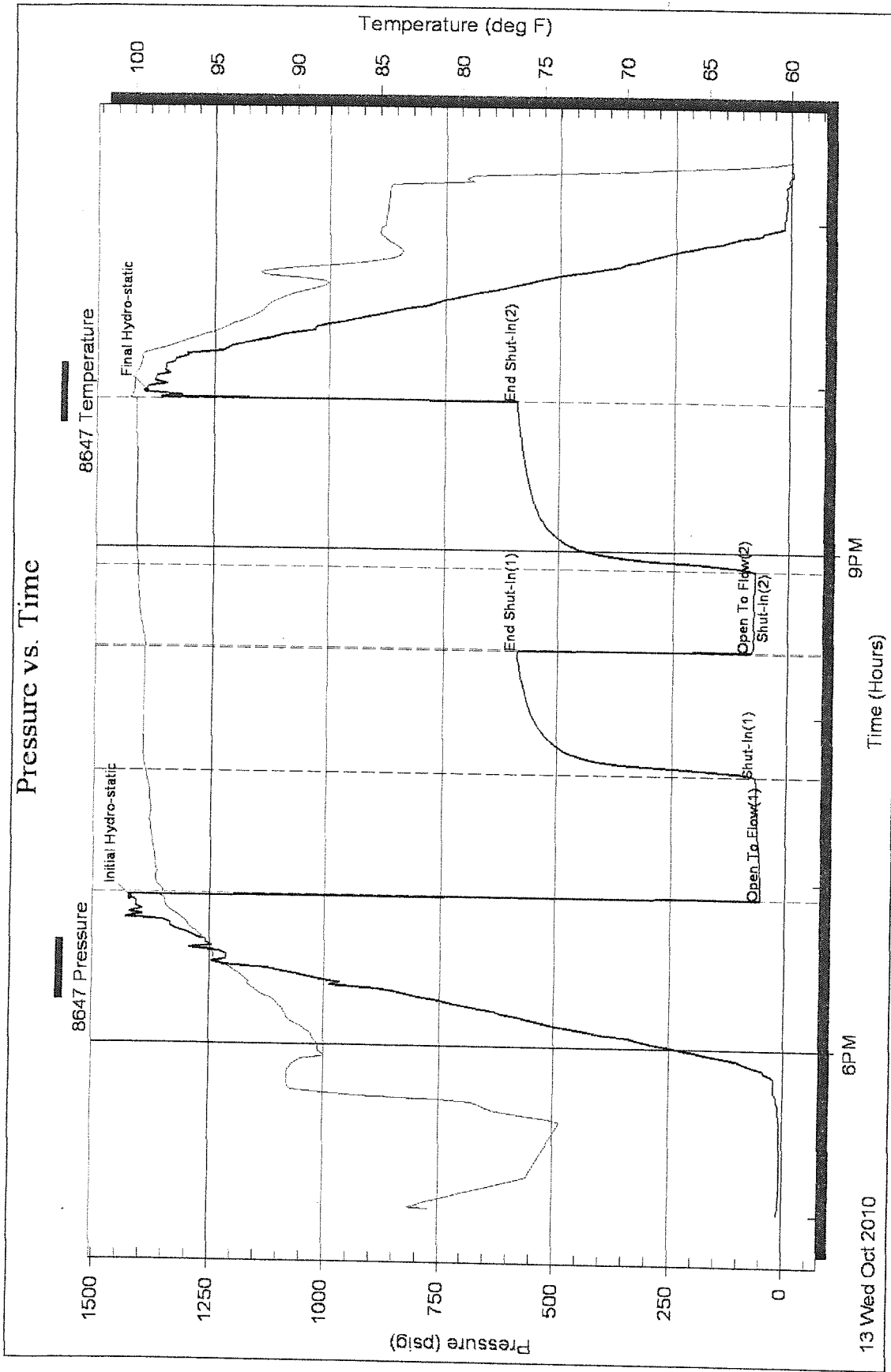
Serial #: 8647

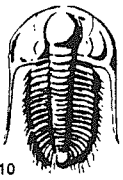
Inside Core

17-8-17/Rooks

DST Test Number: 1

Pressure vs. Time





TRILOBITE TESTING INC.

P.O. Box 1733 • Hays, Kansas 67601

Test Ticket

NO. 040313

Well Name & No. Ray Schindler #6 Test No. 1 Date 10-13-10
 Company Core Elevation 1882 KB 1874 GL
 Address 202 S. St. Francis PO Box 2757 Wichita, K, 67202
 Co. Rep / Geo. Don Rider Rig Maverick 108
 Location: Sec. 17 Twp. 8 Rge. 17 Co. Rooks State K

Interval Tested 2924-2976 Zone Tested _____
 Anchor Length 52 Drill Pipe Run 2867 Mud Wt. 8.8
 Top Packer Depth 2919 Drill Collars Run 61 Vis 50
 Bottom Packer Depth 2924 Wt. Pipe Run _____ WL 9.6
 Total Depth 2976 Chlorides 1500 ppm System _____ LCM _____
 Blow Description IFP- weak blow throughout 1/2-2"
ISI no blow back
FFP- no blow 13 min - sw to base
FSD- no blow back

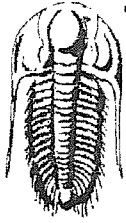
| Rec | Feet of | %gas | %oil | %water | %mud |
|-----------|--------------|----------|------|-----------|------|
| <u>85</u> | <u>USOCM</u> | <u>3</u> | | <u>97</u> | |
| Rec | Feet of | %gas | %oil | %water | %mud |
| Rec | Feet of | %gas | %oil | %water | %mud |
| Rec | Feet of | %gas | %oil | %water | %mud |
| Rec | Feet of | %gas | %oil | %water | %mud |

Rec Total 85 BHT 100 Gravity _____ API RW _____ @ _____ °F Chlorides _____ ppm

(A) Initial Hydrostatic 1423 Test _____ T-On Location 1550
 (B) First Initial Flow 54 Jars _____ T-Started 1700
 (C) First Final Flow 67 Safety Joint _____ T-Open 1850
 (D) Initial Shut-In 587 Circ Sub _____ T-Pulled 2150
 (E) Second Initial Flow 81 Hourly Standby _____ T-Out 2319
 (F) Second Final Flow 73 Mileage 87 RT Comments tool slid 5'
 (G) Final Shut-In 590 Sampler _____ to battery
 (H) Final Hydrostatic 1399 Straddle _____
 Ruined Shale Packer _____
 Ruined Packer _____
 Extra Packer _____
 Extra Copies _____
 Extra Recorder _____
 Day Standby _____
 Accessibility _____
 Sub Total _____
 Initial Open 45
 Initial Shut-In 45
 Final Flow 30
 Final Shut-In 60
 Sub Total _____
 Total _____
 MP/DST Disc't _____

Approved By _____ Our Representative Brian Fairbank

Trilobite Testing Inc. shall not be liable for damaged of any kind of the property or personnel of the one for whom a test is made, or for any loss suffered or sustained, directly or indirectly, through the use of its equipment, or its statements or opinion concerning the results of any test, tools lost or damaged in the hole shall be paid for at cost by the party for whom the test is made.



**TRILOBITE
TESTING, INC**

DRILL STEM TEST REPORT

Gore
202 S. St. Francis
PO Box 2757
Wichita, Ks 67202
ATTN: Don Rider

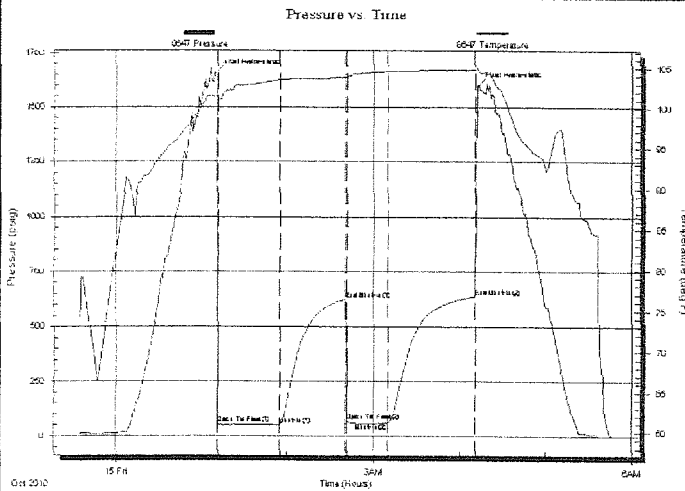
Ray Schindler #6
17-8-17/Rooks
Job Ticket: 40314 DST#: 2
Test Start: 2010.10.14 @ 23:35:19

GENERAL INFORMATION:

Formation: **Arbuckle**
Deviated: No Whipstock: ft (KB)
Time Tool Opened: 01:11:44
Time Test Ended: 05:47:13
Test Type: Conventional Bottom Hole
Tester: Brian Fairbank
Unit No: 41
Interval: **3270.00 ft (KB) To 3316.00 ft (KB) (TVD)**
Reference Elevations: 1882.00 ft (KB)
Total Depth: 3316.00 ft (KB) (TVD) 1874.00 ft (CF)
Hole Diameter: 7.88 inches Hole Condition: KB to GR/CF: 8.00 ft

Serial #: 8647 Inside
Press@RunDepth: 58.51 psig @ 3275.00 ft (KB) Capacity: 8000.00 psig
Start Date: 2010.10.14 End Date: 2010.10.15 Last Calib.: 2010.10.15
Start Time: 23:35:19 End Time: 05:47:13 Time On Btm: 2010.10.15 @ 01:10:14
Time Off Btm: 2010.10.15 @ 04:13:13

TEST COMMENT: IFP - weak to fair blow 1/2" - 3 1/2"
ISI - no blow back
FFP - no blow 13 min - sur blow
FSI - no blow back



PRESSURE SUMMARY

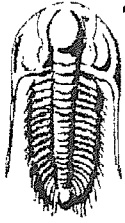
| Time (Min.) | Pressure (psig) | Temp (deg F) | Annotation |
|-------------|-----------------|--------------|----------------------|
| 0 | 1655.19 | 101.51 | Initial Hydro-static |
| 2 | 55.46 | 101.15 | Open To Flow (1) |
| 45 | 52.76 | 103.54 | Shut-In(1) |
| 91 | 624.43 | 103.74 | End Shut-In(1) |
| 92 | 67.77 | 103.71 | Open To Flow (2) |
| 120 | 58.51 | 104.59 | Shut-In(2) |
| 181 | 637.31 | 104.74 | End Shut-In(2) |
| 183 | 1598.89 | 104.67 | Final Hydro-static |

Recovery

| Length (ft) | Description | Volume (bbl) |
|-------------|-----------------|--------------|
| 43.00 | mud 100% | 0.21 |
| 2.00 | HOCM 40%O, 60%M | 0.01 |
| | | |
| | | |
| | | |

Gas Rates

| Choke (inches) | Pressure (psig) | Gas Rate (Mcf/d) |
|----------------|-----------------|------------------|
| | | |



TRILOBITE TESTING, INC

DRILL STEM TEST REPORT

Gore
202 S. St. Francis
PO Box 2757
Wichita, Ks 67202
ATTN: Don Rider

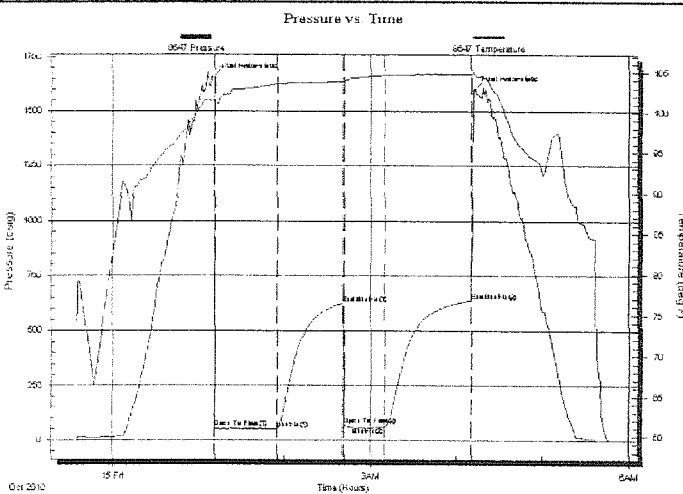
Ray Schindler #6
17-8-17/Rooks
Job Ticket: 40314 DST#: 2
Test Start: 2010.10.14 @ 23:35:19

GENERAL INFORMATION:

Formation: **Arbuckle**
Deviated: No Whipstock: ft (KB)
Time Tool Opened: 01:11:44
Time Test Ended: 05:47:13
Test Type: Conventional Bottom Hole
Tester: Brian Fairbank
Unit No: 41
Interval: **3270.00 ft (KB) To 3316.00 ft (KB) (TVD)**
Reference Elevations: 1882.00 ft (KB)
Total Depth: 3316.00 ft (KB) (TVD) 1874.00 ft (CF)
Hole Diameter: 7.88 inches Hole Condition: KB to GR/CF: 8.00 ft

Serial #: 8647 Inside
Press@RunDepth: 58.51 psig @ 3275.00 ft (KB) Capacity: 8000.00 psig
Start Date: 2010.10.14 End Date: 2010.10.15 Last Calib.: 2010.10.15
Start Time: 23:35:19 End Time: 05:47:13 Time On Btm: 2010.10.15 @ 01:10:14
Time Off Btm: 2010.10.15 @ 04:13:13

TEST COMMENT: IFP - weak to fair blow 1/2" - 3 1/2"
ISI - no blow back
FFP - no blow 13 min - sur blow
FSI - no blow back



PRESSURE SUMMARY

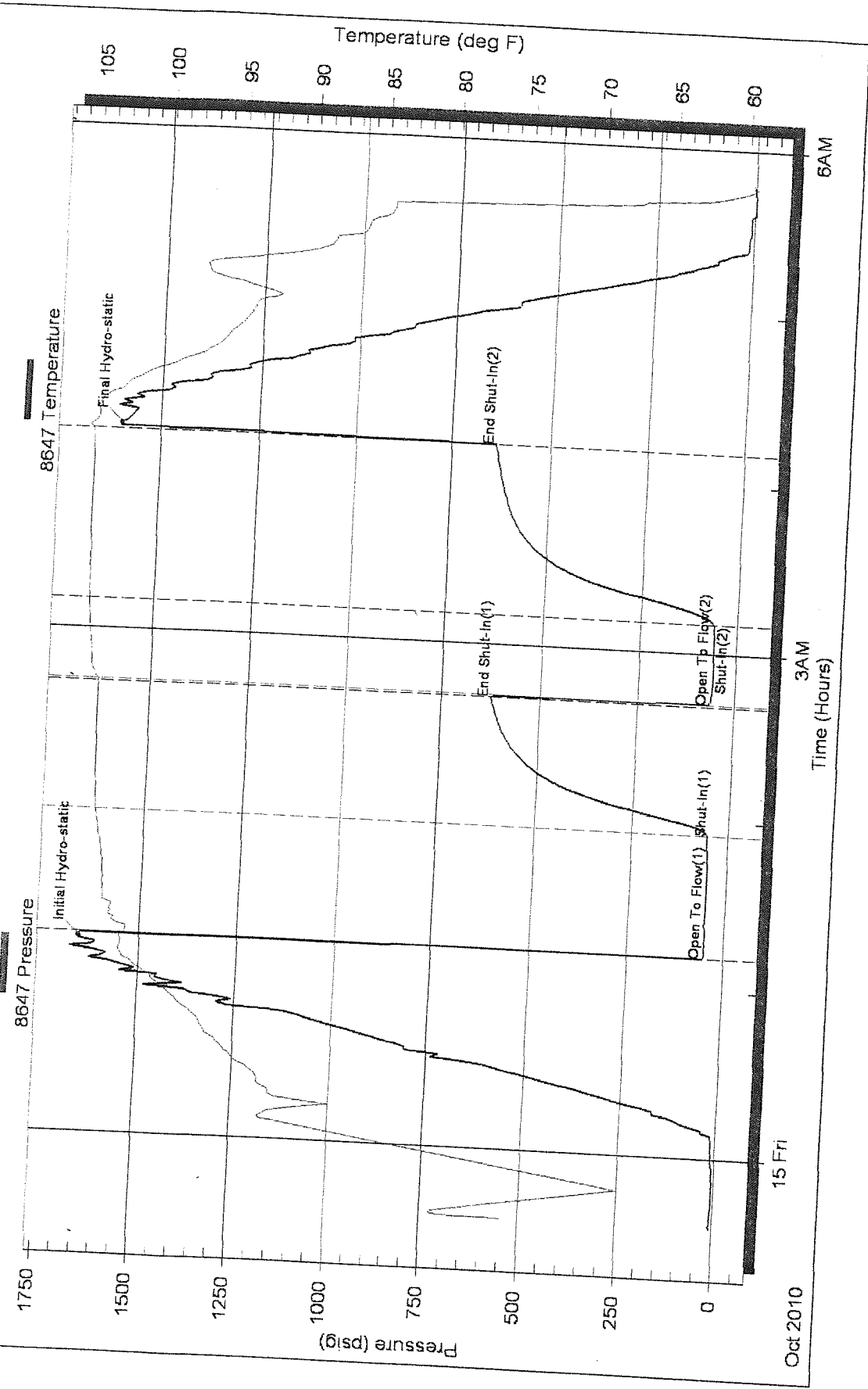
| Time (Min.) | Pressure (psig) | Temp (deg F) | Annotation |
|-------------|-----------------|--------------|----------------------|
| 0 | 1655.19 | 101.51 | Initial Hydro-static |
| 2 | 55.46 | 101.15 | Open To Flow (1) |
| 45 | 52.76 | 103.54 | Shut-In(1) |
| 91 | 624.43 | 103.74 | End Shut-In(1) |
| 92 | 67.77 | 103.71 | Open To Flow (2) |
| 120 | 58.51 | 104.59 | Shut-In(2) |
| 181 | 637.31 | 104.74 | End Shut-In(2) |
| 183 | 1598.89 | 104.67 | Final Hydro-static |

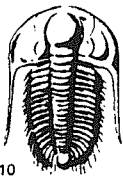
Recovery

| Length (ft) | Description | Volume (bbl) |
|-------------|-------------------|--------------|
| 43.00 | mud 100% | 0.21 |
| 2.00 | HOCM 40% O, 60% M | 0.01 |
| | | |
| | | |
| | | |

Gas Rates

| Choke (Inches) | Pressure (psig) | Gas Rate (Mcf/d) |
|----------------|-----------------|------------------|
| | | |





TRILOBITE TESTING INC.

P.O. Box 1733 • Hays, Kansas 67601

Test Ticket

NO. 040314

4/10

Well Name & No. Roy Schindler #6 Test No. 2 Date 10-14-10
 Company Care Elevation 1882 KB 1874 GL
 Address _____
 Co. Rep / Geo. Con Rider Rig Maverick 108
 Location: Sec. 17 Twp. 8 Rge. 17 Co. Rock State K

Interval Tested 3270-3316 Zone Tested Arbuckle
 Anchor Length 46 Drill Pipe Run 3211 Mud Wt. 9.0
 Top Packer Depth 3265 Drill Collars Run — Vis 38
 Bottom Packer Depth 3270 Wt. Pipe Run — WL 8.8
 Total Depth 3316 Chlorides 4500 ppm System LCM _____
 Blow Description FFP - weak to fair blow 1/2" - 3 1/2"
ISI - no blow back
FFP - no blow 13 min - sur
FSI - no blow back

| Rec | Feet of | %gas | %oil | %water | %mud |
|-----------|-------------|------|-----------|------------|------|
| <u>2</u> | <u>HOLM</u> | | <u>40</u> | <u>60</u> | |
| <u>43</u> | <u>mud</u> | | | <u>100</u> | |
| Rec | Feet of | %gas | %oil | %water | %mud |
| Rec | Feet of | %gas | %oil | %water | %mud |
| Rec | Feet of | %gas | %oil | %water | %mud |

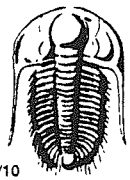
Rec Total 45 BHT 105 Gravity _____ API RW _____ @ _____ °F Chlorides _____ ppm

(A) Initial Hydrostatic 1655 Test T-On Location 3112
 (B) First Initial Flow 55 Jars T-Started 2335
 (C) First Final Flow 53 Safety Joint T-Open 0112
 (D) Initial Shut-In 624 Circ Sub T-Pulled 0413
 (E) Second Initial Flow 68 Hourly Standby T-Out 0549
 (F) Second Final Flow 59 Mileage Comments _____
 (G) Final Shut-In 637 Sampler _____
 (H) Final Hydrostatic 1599 Straddle _____
 Ruined Shale Packer _____
 Shale Packer _____ Ruined Packer _____
 Extra Packer _____ Extra Copies _____
 Extra Recorder _____ Sub Total _____
 Day Standby _____ Total _____
 Accessibility _____ MP/DST Disc't _____
 Sub Total _____

Approved By _____

Our Representative Brian Fairbank

TriLOBite Testing Inc. shall not be liable for damaged of any kind of the property or personnel of the one for whom a test is made, or for any loss suffered or sustained, directly or indirectly, through the use of its equipment, or its statements or opinion concerning the results of any test, tools lost or damaged in the hole shall be paid for at cost by the party for whom the test is made.



TRILOBITE TESTING INC.

P.O. Box 1733 • Hays, Kansas 67601

Test Ticket

NO. 040366

Well Name & No. Roy Schindler #6 Test No. 3 Date 10-15-10
 Company Gore Oil Co. Elevation 1882 KB 1874 GL
 Address _____
 Co. Rep / Geo. Don Rider Rig Maverick #108
 Location: Sec. 17 Twp. 8 Rge. 17 Co. Becks State Ks

Interval Tested 3308 — 3327 Zone Tested Arkuckle
 Anchor Length 19 Drill Pipe Run 3304 Mud Wt. 9.1
 Top Packer Depth 3303 Drill Collars Run — Vis 50
 Bottom Packer Depth 3308 Wt. Pipe Run — WL 9.6
 Total Depth 3327 Chlorides 4,000 ppm System LCM 2.5 #
 Blow Description I.F. Weak-building to 4"

E.F. Weak-building to 1/2"

| Rec | Feet of | %gas | %oil | %water | %mud |
|------------|----------------|------|------|--------|------|
| <u>2</u> | <u>CO</u> | | | | |
| <u>1/8</u> | <u>mdy WTP</u> | | | | |
| _____ | _____ | | | | |
| _____ | _____ | | | | |
| _____ | _____ | | | | |

Rec Total 120 BHT 103 Gravity _____ API RW _____ @ _____ °F Chlorides 24,000 ppm

| | | |
|-------------------------------------|--|--|
| (A) Initial Hydrostatic <u>1684</u> | <input type="checkbox"/> Test _____ | T-On Location <u>13:35</u> |
| (B) First Initial Flow <u>16</u> | <input type="checkbox"/> Jars _____ | T-Started <u>14:50</u> |
| (C) First Final Flow <u>43</u> | <input type="checkbox"/> Safety Joint <u>X</u> | T-Open <u>16:45</u> |
| (D) Initial Shut-In <u>66.3</u> | <input type="checkbox"/> Circ Sub _____ | T-Pulled <u>20:00</u> |
| (E) Second Initial Flow <u>48</u> | <input type="checkbox"/> Hourly Standby _____ | T-Out <u>21:47</u> |
| (F) Second Final Flow <u>67</u> | <input type="checkbox"/> Mileage _____ | Comments _____ |
| (G) Final Shut-In <u>66.8</u> | <input type="checkbox"/> Sampler _____ | |
| (H) Final Hydrostatic <u>1583</u> | <input type="checkbox"/> Straddle _____ | <input type="checkbox"/> Ruined Shale Packer _____ |
| Initial Open <u>45</u> | <input type="checkbox"/> Shale Packer _____ | <input type="checkbox"/> Ruined Packer _____ |
| Initial Shut-In <u>45</u> | <input type="checkbox"/> Extra Packer _____ | <input type="checkbox"/> Extra Copies _____ |
| Final Flow <u>45</u> | <input type="checkbox"/> Extra Recorder _____ | Sub Total _____ |
| Final Shut-In <u>60</u> | <input type="checkbox"/> Day Standby _____ | Total _____ |
| | <input type="checkbox"/> Accessibility _____ | MP/DST Disc't _____ |
| | Sub Total _____ | |

Approved By _____

Our Representative Don Rangle

Trilobite Testing Inc. shall not be liable for damaged of any kind of the property or personnel of the one for whom a test is made, or for any loss suffered or sustained, directly or indirectly, through the use of its equipment, or its statements or opinion concerning the results of any test, tools lost or damaged in the hole shall be paid for at cost by the party for whom the test is made.