

Geologist's Report WellSight Systems

Scale 1:240 (5"=100') Imperial
Measured Depth Log

Well Name: SHAKESPEARE OIL COMPANY, INC. CAMPBELL #2-17
Location: 1180' FSL&1010'FEL(approx.NW NW SE SE) of Section 17-T13S-R32W
License Number: API#15-109-21097 Region: Logan County, Kansas
Spud Date: August 30, 2012 Drilling Completed: September 10,2012
Surface Coordinates: N.A.

Bottom Hole N.A.
Coordinates:
Ground Elevation (ft): 3027 K.B. Elevation (ft): 3037
Logged Interval (ft): 3700 To: 4700 Total Depth (ft): RTD 4700 LTD 4700
Formation: Mississippi
Type of Drilling Fluid: Chemical

Printed by MUD.LOG from WellSight Systems 1-800-447-1534 www.WellSight.com

Operator

Company: Shakespeare Oil Company, Inc. (KLN#62881)
Address: 202 W Main
Salem, IL 62881

Geologist

Name: Richard S.(Steve) Davis Jr.
Company: Consulting Petroleum Geologist
Address: 221 N. Market, Suite 268
Wichita, Kansas 67202
Cell 316-772-6479 Home 316-686-1193 Office 316-267-9115

Formation	E-Log	Sample
Anhydrite	2502 + 535	N.A.
B/Anhydrite	2526 + 511	N.A.
Topeka	3806 - 769	3807
Heebner	3970 - 933	3970
Lansing	4010 - 973	4013
Muncie Creek	4158 - 1121	4160
Stark	4243 -1206	4244
BKC	4313 -1276	4316
Pawnee	4443 -1406	4444
Cherokee Shale	4525 -1488	4526
Johnson Zone	4570 -1533	4570
Mississippi	4622 -1585	4622

Drilling Information

Drilling Contractor: Val Energy, Inc. Rig #7

Casing: Surface: 8 5/8" @ 254'
 Production: 5 1/2"


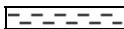

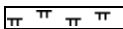

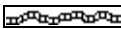



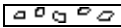








Electrical Surveys: Weatherford, DIL, CNL/CDL & MEL

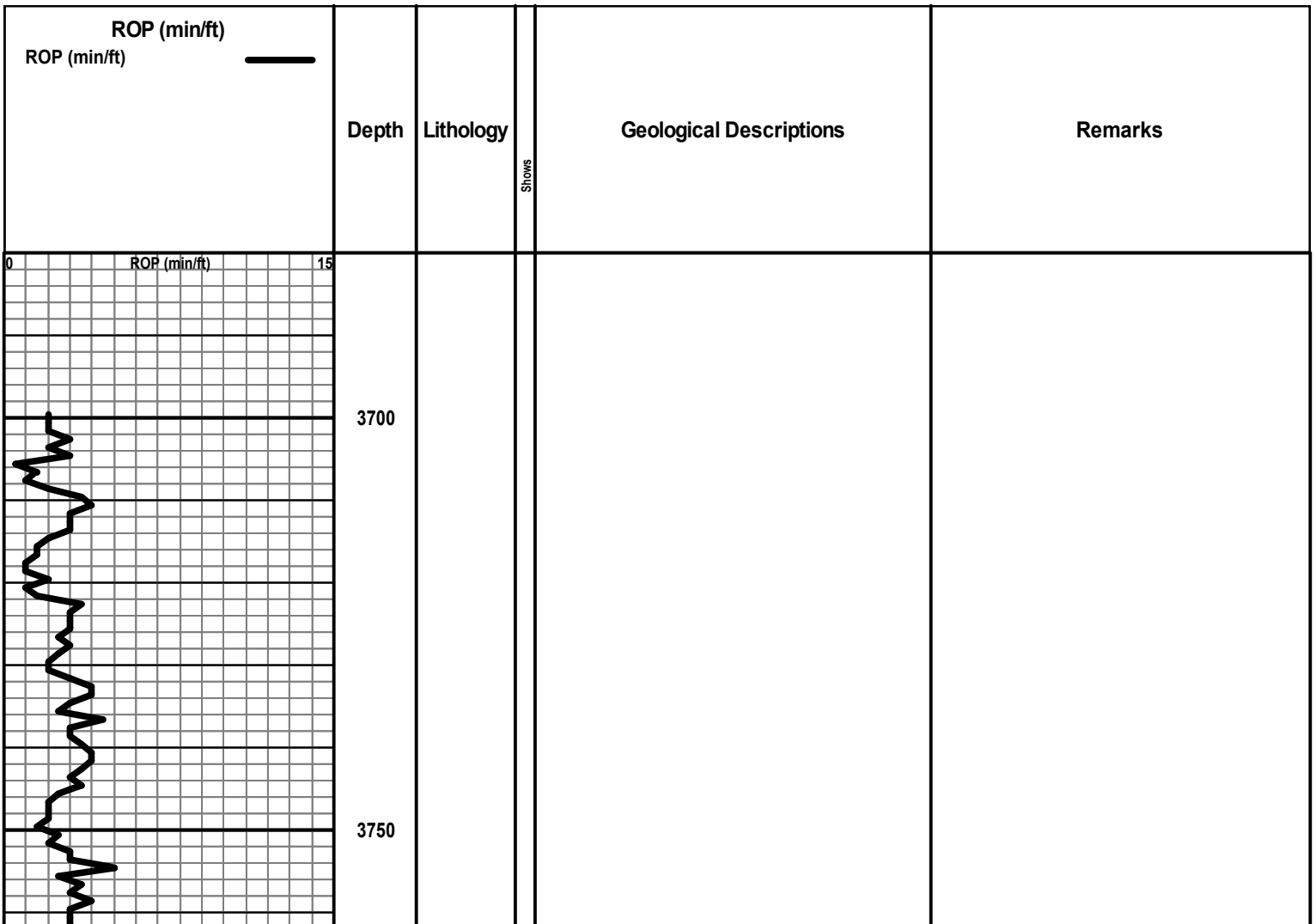
Bit Record: Bit 1: 12 1/4" JZ RT out(254') ftg(254') hrs(2 3/4), Bit 2: JZ QX28 out(4700') ftg(4446') hrs(135 1/4)

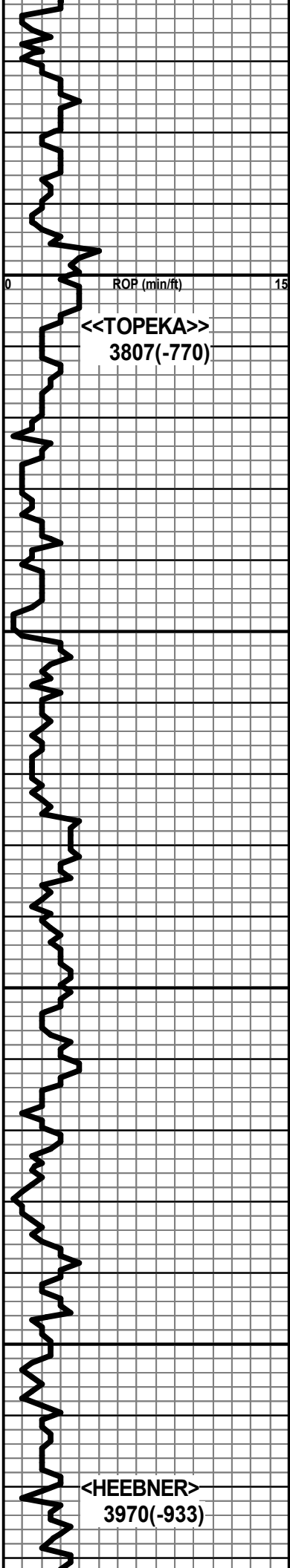
Daily Penetration:

Date	Spud
8-31	254
9-01	1090
9-02	2670
9-03	3350
9-04	3870
9-05	4060
9-06	4114
9-07	4242
9-08	4434
9-09	4557
9-10	4700 RTD

Rock Types

 Anhy	 Clyst	 Gyp	 Mrlst	 Shgy
 Bent	 Coal	 Igne	 Salt	 Sltst
 Brec	 Congl	 Lmst	 Shale	 Ss
 Cht	 Dol	 Meta	 Shcol	 Till





3800

Shale, gray, black & rust

LS, brown-gray, fxln, foss-ool, chky IP, F-P por, NS

LS, crm-white, fxln, foss-ool, chky, P mold por + Shale gray-black

3850

LS gray-off white, fxln, foss-ool, P-ipart por, NS + shale gray, black, green & rust

Most Shale, gray, green, rust & black, silty

LS, gray-tan, vf-micro xln, dense, NV por

3900

Shale, gray, black & green

LS, gray-tan, vf-micro xln, sltly foss, NV por, dense

Shale, black, sub carb

LS, crm-white, fxln, sltly foss, P vgy por & P ixln por, SS scummy res oil, spt'd stn, spt'd dull fluor, N odor

LS, gray-white, chky, NV por, dense + Cht, white & gray, opq

Abnt shale, gray, black & rust + LS AA

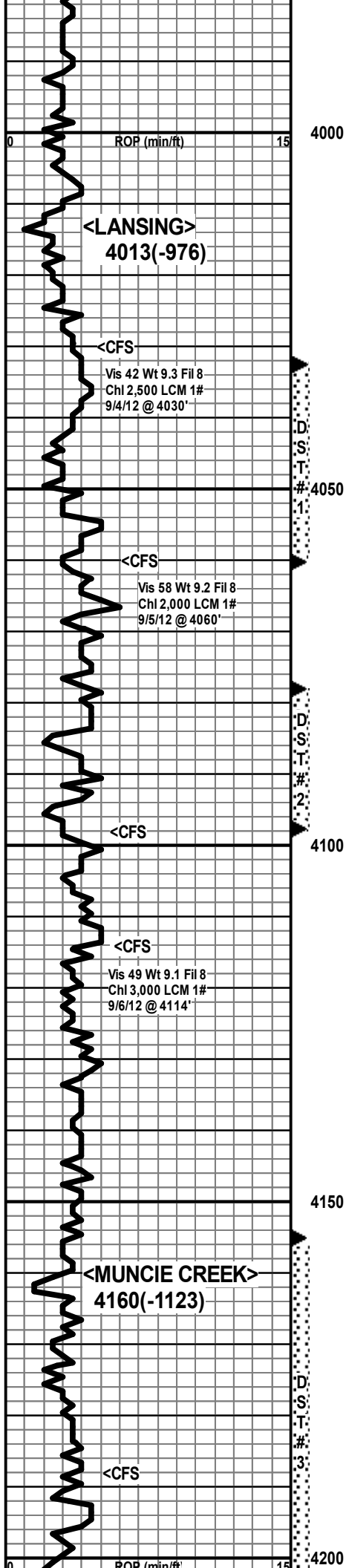
3950

LS, brown-gray, fxln, foss, arg, NV por + Cht, gray, opq & abnt Shale, gray, black, green & rust

Shale, black, carb

LS, gray-tan, vfxln, dense, NV por + Shale vari-col

<HEEBNER>
3970(-933)



Shale black, gray, green & rust

LS, crm-tan, f-vfxln, chky, sltly foss & ool, NV por + few pcs Cht, white, opq

Shale, black, green & gray
LS, crm-tan, fxln, ool-sltly ool, chky IP, P pool & P vgy por, SSFO, spt'd stn, spt'd fluor, V fnt odor

LS, tan-off white, f-vfxln, chky IP, NV por, most dense

Shale dk gray & green

LS, tan-gray, f-vfxln, foss & ool IP, F-P mold por & P ixln por, S-FSFO, spt'd-unf stn, F spt'd-unf fluor, fnt odor

LS, gray-brown, vf-micro xln, dense + LS white-crm, fxln, foss & sltly ool, chky, NV por (few pc's w/show from above?)

LS AA + Shale gray, black, green & rust

LS, gray-brown, vf-fxln some crs, foss & ool, F-P ipart por & P ixln por, S-FSFO, spt'd-unf stn (some asph), spt'd fluor, F odor

LS, gray-crm, f-vfxln, foss & ool, P ipart por, VSSFO, rare spt'd stn, dull fluor, N odor

LS, crm-white, fxln, chky, sltly foss & ool, NV por + Cht, crm-gray, sub ool

LS, crm-white, f-vfxln, sltly ool, NV por + Cht, white-gray sub ool

LS AA + LS, tan-brown, vfxln, sltly foss, NV por, dense w/inc Shale, gray, black & rust

Shale, black, carb

LS, tan-crm, f-mxln, sltly foss, P vgy por & P ixln por, S-FSFO, spt'd-unf lt stn, spt'd fluor, G odor

LS, crm-white, f-vfxln, sltly foss, chky IP, NV por, dense + Shale gray, green & rust

Strap & Survey @ 4060
Strap .43 short & Survey 1/4*

DST #1 4032 - 4060
(Lansing B)

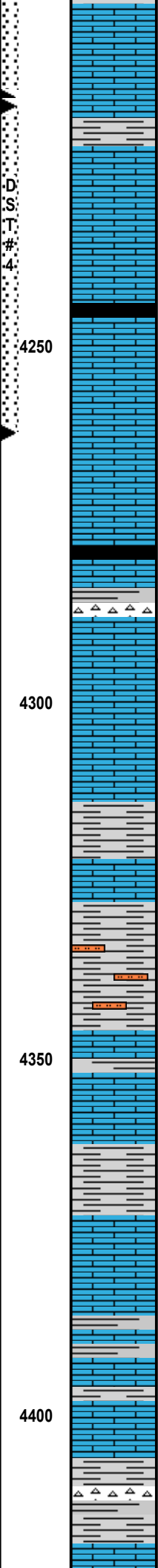
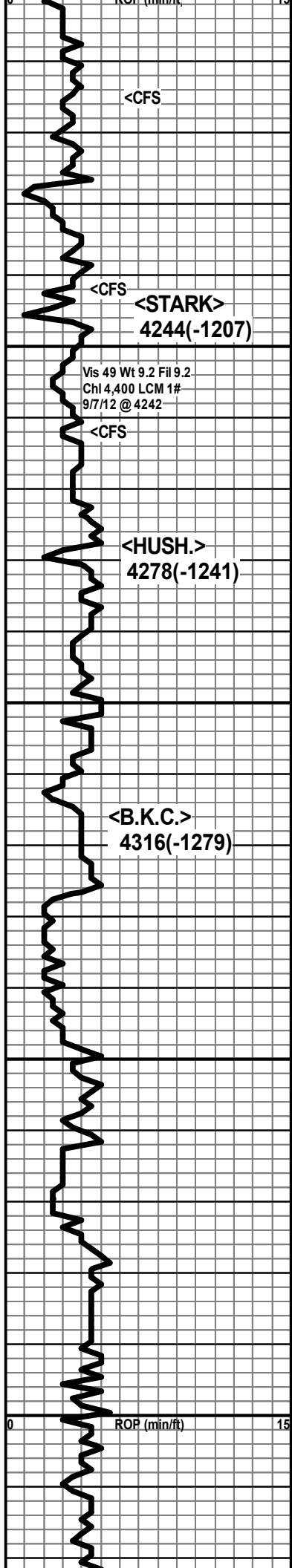
15-30-45-90
BLOW:
IF BOB 2 min
ISI BOB 12 min
FF BOB 4 min
FSI Built to 10" in 18 min
RECOVERY: 1,800' GIP
1,030' GO
(10%g 90%o, gravity 38 API)
124' SW&MCGO
(10%g 80%o 2%w 8%_m)
62' SW&MCGO
(10%g 40%o 10%w 40%_m)
1,216' TOTAL FLUID
IHP 1998
IFP 62-200
ISIP 1189
FFP 189-461
FSIP 1184
FHP 1916 BHT 120 F

DST #2 4078 - 4098
(Lansing D-E)

15-30-45-90
BLOW:
IF BOB 5 min
ISI built to 2 1/4"
FF BOB 7 min.
FSI built to 5"
RECOVERY: 1860' GIP
206' GO
(5%g 95%o, gravity 36 API)
124' GO
(25%g 75%o)
62' MCGO
(30%g 40%o 30%_m)
392' TOTAL FLUID
IHP1997
IFP 29-63
ISIP1216
FFP 70-172
FSIP 1224
FHP 1902 BHT 120 F

DST #3 4155-4215
(Lansing H & I)

15-30-45-90
BLOW:
IF BOB 11 min
ISI built to 1"
FF BOB 15 min
FSI built to 5"
RECOVERY: 990' GIP
72' GO



LS, tan-gray, f-vfxln, foss, chky-chty IP, F-P pp por & F-P vgy por, F-GSFO, spt'd-unf stn & fluor, G-odor

LS, tan-gray, vfxln, chky IP, sub ool, NV por

Shale, gray-black & green

LS, crm-off white, fxl, ool & foss, F-P ipart por & F-P vgy por, S-FSFO, spt'd stn & fluor, fnt oor

Shale, black, carb

LS, tan-gray, f-vfxln, ool, P iool por & P ool mold por, SSFO, spt'd lt stn, dull spt'd fluor, strong odor + LS, brown-gray, vf-micro xln, dense

Shale, black, carb

LS gray-brown, vfxln, sltly foss, dense NV por + shale, gray, green & black+ Cht tan opq

LS, brown-gray, vf-fxl, few foss frag, P vgy-pp por, dense, VSSFO, spt'd asph stn, dull spt'd fluor, V fnt odor

LS, tan-gray, vf-micro xln, sub-ool, dense, NV por

Shale, gray, black, gray & rust

LS, gray-tan, vfxln, dense, NV por+Shale AA

Shale, brown-rust, silty, hard to wash

LS, gray-white, fxln, chky, sltly foss, NVpor

LS, gray, vf-micro xln, dense, NV por

Shale, gray, black & green

LS, crm-off white, vf-fxl, sltly foss w/ brown shale incl, NV por

LS, gray, yellow-dis colo, f-vfxln, sub ool, arg, NV por + Shale gray, black, green & gray

Shale AA w/inc LS, white-crm, chky, NV por

Shale, gray, green, rust & black + few pc's Cht, pink

LS, white-crm, fxln, chky, NV por + Shale, gray,

(10%g 90%o, gravity 38 API)
 124' SW&OCGM
 (25%g 18%o 2%w 55%o)
 124' OCMW
 (5%o 75%w 20%o)
 320' TOTAL FLUID
 IHP 2021
 IFP 46-86
 ISIP 1140
 FFP 91-169
 FSIP 1141
 FHP 1971 BHT 117 F

DST #4 4216-4262
 (Lansing J & K)
 15-30-45-90
 BLOW:
 IF built to 4 1/2"
 FF built to 9 1/2"
 (No return ISI or FSI)
 RECOVERY:
 15' GO
 (5%g 95%o, gravity 37 API)
 125' OCGM
 (10%g 5%o 85%o)
 140' TOTAL FLUID
 IHP 2066
 IFP 21-39
 ISIP 988
 FFP 47-78
 FSIP 948
 FHP 2040 BHT 117 F

<CFS>

<STARK>
 4244(-1207)

<HUSH.>
 4278(-1241)

<B.K.C.>
 4316(-1279)

Vis 49 Wt 9.2 Fil 9.2
 Chl 4,400 LCM 1#
 9/7/12 @ 4242

ROP (min/ft)

4250

4300

4350

4400

Vis 48 Wt 9.2 Fil 7.2
Chl 4,500 LCM 1#
9/8/12 @ 4434

<PAWNEE>
4444(-1407)

4450

green, black & rust

Abnt shale, vari colo + LS brown-gray, micro xln, dense

Shale, black, carb

LS, tan-brown, fxln, sltly ool-foss, NV por, few pc's w/spt'd edge stn, NSFO, N odor + flood Cht, gray-tan, opq

LS, tan-crm, f-vfxln, sltly foss, dense, NV por + Cht gray, opq sltly fos

Shale, black, carb

LS, tan-brown, f-mxln, sltly foss, NV por, few pc's with spt'd asph stn, NSFO + Cht gray-brown opq + Shale vari colo

Shale, black, carb

LS, brown-gray, f-vfxln, ool, F-P iool por, S-FSFO, few pc's spt'd stn & dull fluor, fnt odor + Cht brown-gray, opq

LS, tan-crm, fxln, sltly foss & ool, chky-dense, NV por

Shale, black, carb

LS, f-vfxln, brown-gray, foss & ool, F-P mold por & P ipart por, SSFO, spt'd res stn, dull spt'd fluor, fnt odor

LS, brown-gray, vfxln, sltly foss & ool, dense, NV por + Shale black, gray & green

LS, brown-gray, vf-micro xln, sltly foss, dense, NV por + Shale black, gray & green

LS, brown-tan & gray, f-vfxln, dense, sltly foss, P-F vgy por & P ixln por, F-GSFO, spt'd - unf dk stn, spt'd dull fluor, G odor

LS w/ show AA, most LS, gray - tan, fxln, ool & foss IP, NV por+ LS brown, vf-micro xln, dense

LS, gray-tan, fxln, sltly chky, NV por

AA w/inc Shale, rust-red, green, turq, black & gray + few clus SS, geen-white, f-vfgrn, sub rd, well sort, calc, fri - comp, P ig por, NS

SS, white-gray, f-mgrn, mod sort, fri, F-G ig por, NS, most Shale vari colo AA

LS, white-gray, fxln, V sdy vf-fgrn, chky IP, NV por

LS, white-gray, f-vfxln, sdy, chkv IP, NV por+ LS

Vis 47 Wt 9.1 Fil 9.6
Chl 4,000 LCM1#
9/9/12 @ 4584

<JOHNSON>
4570(-1533)

4550

4550

4600

<MISS.>
4622(-1585)

<CFS (work on rig)

<FORT SCOTT>
4497(-1460)

<CFS

<CHK SHALE>
4526(-1489)

<CFS

ROP (min/ft)

D.
S.
T.
#:
5

D.
S.
T.
#:
6

DST#5 4468-4520
(Myric Station & Fort Scott)

15-30-45-60

BLOW:

IF built to 2 1/4"

FF built to 2 1/2"

(No return ISI or FSI)

RECOVERY:

100' M w/ scum of oil

IHP 2233

IFP 21-33

ISIP 291

FFP 43-59

FSIP 172

FHP 2143 BHT 119 F

DST #6 4545-4594
(Johnson Zone)

BLOW:

IF BOB 11 min

ISI no return

FF BOB 10 min

FSI built to 3"

RECOVERY: 124' GIP

196' MCGO

(10% g 80% o 10% m)

124' MCGO

(15%g 70%o 15%m)

320' TOTAL FLUID

IHP 2254

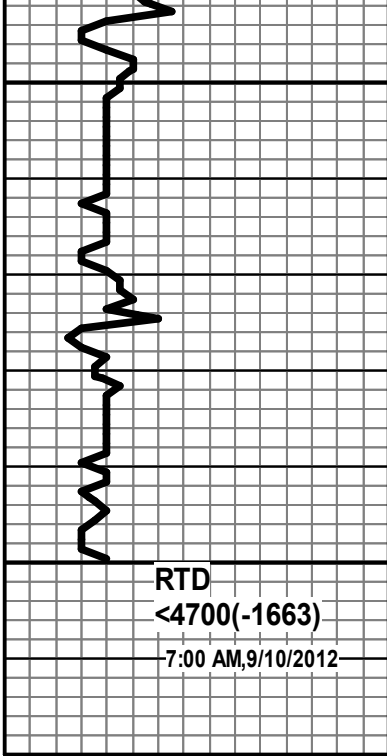
IFP 40-94

FSIP 1085

FFP 114-178

FSIP 958

FHP 2173



4650

LS, tan-gray, f-vfxln, ool-sltly sdy, chky IP NV por

LS, crm-white, fxlIn, sdy & sltly ool, chky IP, NV por

LS, crm-gray, fxlIn sdy & ool, NV por + LS, tan-gray, f-vfxln, dense, sltly sdy, NV por

LS AA w/inc Shale, vari colo, ? slough

LS, tan-gray, f-vfxln, ool-sltly sdy, chky IP NV por

4700

RTD
<4700(-1663)
-7:00 AM,9/10/2012

Survey @ 4700, 1/4