



TRILOBITE TESTING, INC.

DRILL STEM TEST REPORT

Shakespeare Oil Co.
 202 W Main St.
 Salem, IL 62881
 ATTN: Steve Davis

17-13s-32w-Logan KS

Campbell #2-17

Job Ticket: 50013

DST#: 3

Test Start: 2012.09.06 @ 17:17:34

GENERAL INFORMATION:

Formation: **LKC-"H&I"**
 Deviated: No Whipstock: ft (KB)
 Time Tool Opened: 19:03:19
 Time Test Ended: 00:52:34
 Interval: **4155.00 ft (KB) To 4215.00 ft (KB) (TVD)**
 Total Depth: 4215.00 ft (KB) (TVD)
 Hole Diameter: 7.88 inches Hole Condition: Good
 Test Type: Conventional Bottom Hole (Reset)
 Tester: Tate Lang
 Unit No: 46
 Reference Elevations: 3037.50 ft (KB)
 3027.00 ft (CF)
 KB to GR/CF: 10.50 ft

Serial #: 8675

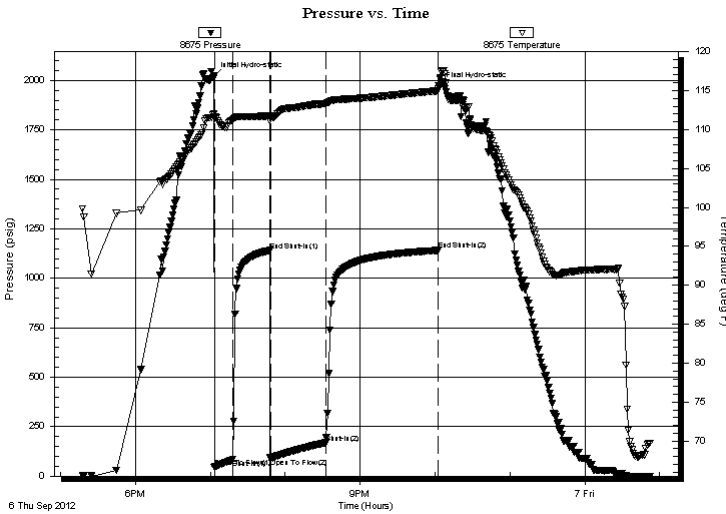
Inside

Press @ Run Depth: 168.56 psig @ 4192.00 ft (KB) Capacity: 8000.00 psig
 Start Date: 2012.09.06 End Date: 2012.09.07 Last Calib.: 2012.09.07
 Start Time: 17:17:49 End Time: 00:52:34 Time On Btm: 2012.09.06 @ 19:03:04
 Time Off Btm: 2012.09.06 @ 22:02:49

TEST COMMENT: IF-B.O.B. 11mins.
 ISI-Bled Off For 5mins-Weak Surface Blow Built To 1in. And Stayed
 FF-B.O.B. 15mins
 FSI-Bled Off For 5mins.-Fair Surface Blow Built to 5ins. And Stayed

PRESSURE SUMMARY

Time (Min.)	Pressure (psig)	Temp (deg F)	Annotation
0	2021.25	112.01	Initial Hydro-static
1	45.62	111.35	Open To Flow (1)
15	86.04	111.23	Shut-In(1)
45	1140.22	111.77	End Shut-In(1)
45	90.88	111.49	Open To Flow (2)
90	168.56	113.32	Shut-In(2)
180	1141.17	114.98	End Shut-In(2)
180	1970.92	115.22	Final Hydro-static



Recovery

Length (ft)	Description	Volume (bbl)
124.00	5%O 20%M 75%W	1.74
72.00	10%G 90%O	1.01
62.00	20%G 20%O 60%M	0.87
62.00	2%W 18%O 25%G 55%M	0.87
0.00	990' G.I.P.	0.00

* Recovery from multiple tests

Gas Rates

Choke (inches)	Pressure (psig)	Gas Rate (Mcf/d)



**TRILOBITE
TESTING, INC.**

DRILL STEM TEST REPORT

FLUID SUMMARY

Shakespeare Oil Co.

17-13s-32w-Logan KS

202 W Main St.
Salem, IL 62881

Campbell #2-17

Job Ticket: 50013

DST#: 3

ATTN: Steve Davis

Test Start: 2012.09.06 @ 17:17:34

Mud and Cushion Information

Mud Type: Gel Chem

Cushion Type:

Oil API:

38 deg API

Mud Weight: 9.00 lb/gal

Cushion Length:

ft

Water Salinity:

ppm

Viscosity: 49.00 sec/qt

Cushion Volume:

bbbl

Water Loss: 7.98 in³

Gas Cushion Type:

Resistivity: ohm.m

Gas Cushion Pressure:

psig

Salinity: 3000.00 ppm

Filter Cake: 1.00 inches

Recovery Information

Recovery Table

Length ft	Description	Volume bbbl
124.00	5%O 20%M 75%W	1.739
72.00	10%G 90%O	1.010
62.00	20%G 20%O 60%M	0.870
62.00	2%W 18%O 25%G 55%M	0.870
0.00	990' G.I.P.	0.000

Total Length: 320.00 ft

Total Volume: 4.489 bbl

Num Fluid Samples: 0

Num Gas Bombs: 0

Serial #:

Laboratory Name:

Laboratory Location:

Recovery Comments:

Serial #: 8675

Inside

Shakespeare Oil Co.

Campbell #2-17

DST Test Number: 3

