



TRILOBITE TESTING, INC.

DRILL STEM TEST REPORT

Shakespeare Oil Co.
202 W Main St.
Salem, IL 62881
ATTN: Steve Davis

17-13s-32w-Logan KS

Campbell #2-17

Job Ticket: 48884

DST#: 4

Test Start: 2012.09.07 @ 11:30:00

GENERAL INFORMATION:

Formation: **Kansas City " J & K**

Deviated: No Whipstock: ft (KB)

Time Tool Opened: 13:20:45

Time Test Ended: 18:21:00

Test Type: Conventional Bottom Hole (Reset)

Tester: Jace McKinney

Unit No: 46

Interval: **4216.00 ft (KB) To 4262.00 ft (KB) (TVD)**

Reference Elevations: 3037.50 ft (KB)

Total Depth: 4262.00 ft (KB) (TVD)

3027.00 ft (CF)

Hole Diameter: 7.88 inches Hole Condition: Good

KB to GR/CF: 10.50 ft

Serial #: 8650 Outside

Press @ Run Depth: 78.30 psig @ 4217.00 ft (KB)

Capacity: 8000.00 psig

Start Date: 2012.09.07

End Date: 2012.09.07

Last Calib.: 2012.09.07

Start Time: 11:30:15

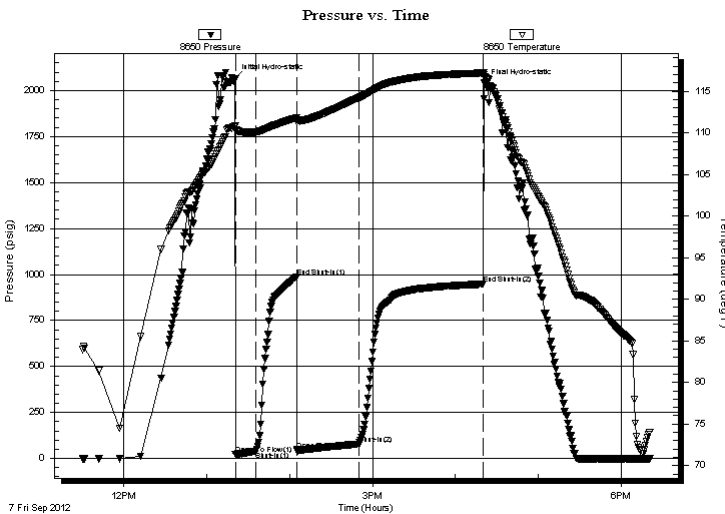
End Time: 18:21:00

Time On Btm: 2012.09.07 @ 13:20:30

Time Off Btm: 2012.09.07 @ 16:20:45

TEST COMMENT: Built to 4 1/2" blow
No return blow
Built to 9 1/2" blow
No return blow

PRESSURE SUMMARY



Time (Min.)	Pressure (psig)	Temp (deg F)	Annotation
0	2066.47	110.78	Initial Hydro-static
1	21.12	110.30	Open To Flow (1)
15	39.43	110.11	Shut-In(1)
45	987.65	111.80	End Shut-In(1)
45	46.82	111.28	Open To Flow (2)
90	78.30	114.20	Shut-In(2)
180	948.00	117.20	End Shut-In(2)
181	2040.14	116.99	Final Hydro-static

Recovery

Length (ft)	Description	Volume (bbl)
125.00	ocgm 5%O 10%G 85%M	1.75
15.00	gco 5%G 95%O	0.21

Gas Rates

Choke (inches)	Pressure (psig)	Gas Rate (Mcf/d)

* Recovery from multiple tests



**TRILOBITE
TESTING, INC.**

DRILL STEM TEST REPORT

FLUID SUMMARY

Shakespeare Oil Co.

17-13s-32w-Logan KS

202 W Main St.
Salem, IL 62881

Campbell #2-17

Job Ticket: 48884

DST#: 4

ATTN: Steve Davis

Test Start: 2012.09.07 @ 11:30:00

Mud and Cushion Information

Mud Type: Gel Chem

Cushion Type:

Oil API:

37 deg API

Mud Weight: 9.00 lb/gal

Cushion Length:

ft

Water Salinity:

ppm

Viscosity: 49.00 sec/qt

Cushion Volume:

bbbl

Water Loss: 9.18 in³

Gas Cushion Type:

Resistivity: ohm.m

Gas Cushion Pressure:

psig

Salinity: 4400.00 ppm

Filter Cake: 1.00 inches

Recovery Information

Recovery Table

Length ft	Description	Volume bbbl
125.00	ocgm 5%O 10%G 85%M	1.753
15.00	gco 5%G 95%O	0.210

Total Length: 140.00 ft

Total Volume: 1.963 bbl

Num Fluid Samples: 0

Num Gas Bombs: 0

Serial #:

Laboratory Name:

Laboratory Location:

Recovery Comments:

Serial #: 8650

Outside Shakespeare Oil Co.

Campbell #2-17

DST Test Number: 4

