



DRILL STEM TEST REPORT

Prepared For: **Palomino Petroleum Inc.**

4924 SE 84 St
Wichita KS 67114-8827

ATTN: Phil Askey

Revalo #1

7-15s-25w Trego KS

Start Date: 2012.08.18 @ 03:15:00

End Date: 2012.08.18 @ 09:42:45

Job Ticket #: 48349 DST #: 1

Trilobite Testing, Inc
PO Box 362 Hays, KS 67601
ph: 785-625-4778 fax: 785-625-5620

Printed: 2012.08.22 @ 14:02:02



**TRILOBITE
TESTING, INC**

DRILL STEM TEST REPORT

Palomino Petroleum Inc.
4924 SE 84 St
Wichita KS 67114-8827
ATTN: Phil Askey

7-15s-25w Trego KS

Revilo #1

Job Ticket: 48349

DST#: 1

Test Start: 2012.08.18 @ 03:15:00

GENERAL INFORMATION:

Formation: **Kansas City " H - I**
 Deviated: No Whipstock: ft (KB)
 Time Tool Opened: 05:53:30
 Time Test Ended: 09:42:45
 Interval: **3832.00 ft (KB) To 3893.00 ft (KB) (TVD)**
 Total Depth: 3893.00 ft (KB) (TVD)
 Hole Diameter: 7.88 inches Hole Condition: Fair
 Test Type: Conventional Bottom Hole (Initial)
 Tester: Jace McKinney
 Unit No: 46
 Reference Elevations: 2377.00 ft (KB)
 2369.00 ft (CF)
 KB to GR/CF: 8.00 ft

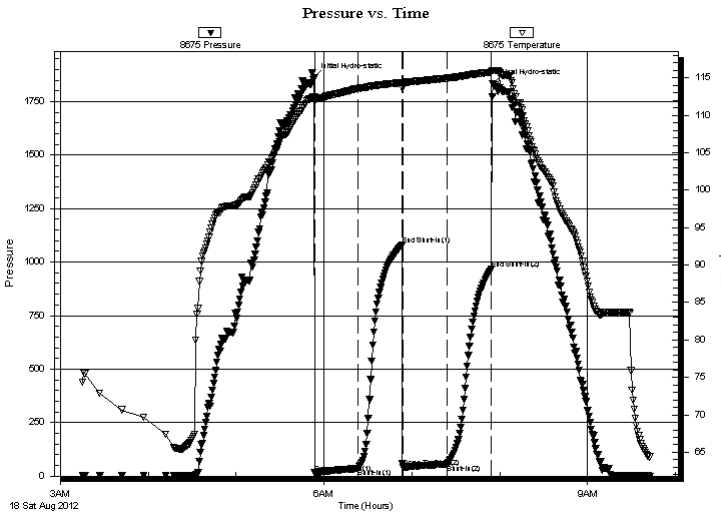
Serial #: 8675

Inside

Press @ RunDepth: 56.95 psig @ 3833.00 ft (KB) Capacity: 8000.00 psig
 Start Date: 2012.08.18 End Date: 2012.08.18 Last Calib.: 2012.08.18
 Start Time: 03:15:15 End Time: 09:42:45 Time On Btm: 2012.08.18 @ 05:53:15
 Time Off Btm: 2012.08.18 @ 07:55:15

TEST COMMENT: Built to 2 3/4" blow
 No return blow
 Built to 1" blow, Died to 1/2" blow
 No return blow

PRESSURE SUMMARY



Time (Min.)	Pressure (psig)	Temp (deg F)	Annotation
0	1862.09	112.51	Initial Hydro-static
1	15.15	111.87	Open To Flow (1)
30	36.28	113.55	Shut-In(1)
60	1079.12	114.36	End Shut-In(1)
61	41.80	114.08	Open To Flow (2)
91	56.95	114.94	Shut-In(2)
121	966.15	115.75	End Shut-In(2)
122	1834.20	115.99	Final Hydro-static

Recovery

Length (ft)	Description	Volume (bbl)
80.00	100% Mud w ith oil spots	0.39

Gas Rates

Choke (inches)	Pressure (psig)	Gas Rate (Mcf/d)



**TRILOBITE
TESTING, INC**

DRILL STEM TEST REPORT

TOOL DIAGRAM

Palomino Petroleum Inc.

7-15s-25w Trego KS

4924 SE 84 St
Wichita KS 67114-8827

Revilo #1

Job Ticket: 48349

DST#: 1

ATTN: Phil Askey

Test Start: 2012.08.18 @ 03:15:00

Tool Information

Drill Pipe:	Length: 3730.92 ft	Diameter: 3.80 inches	Volume: 52.34 bbl	Tool Weight: 15000.00 lb
Heavy Wt. Pipe:	Length: 0.00 ft	Diameter: 0.00 inches	Volume: 0.00 bbl	Weight set on Packer: 30000.00 lb
Drill Collar:	Length: 93.72 ft	Diameter: 2.25 inches	Volume: 0.46 bbl	Weight to Pull Loose: 50000.00 lb
			<u>Total Volume: 52.80 bbl</u>	Tool Chased 0.00 ft
Drill Pipe Above KB:	12.64 ft			String Weight: Initial 40000.00 lb
Depth to Top Packer:	3832.00 ft			Final 40000.00 lb
Depth to Bottom Packer:	ft			
Interval between Packers:	61.00 ft			
Tool Length:	81.00 ft			
Number of Packers:	2	Diameter: 6.75 inches		

Tool Comments:

Tool Description	Length (ft)	Serial No.	Position	Depth (ft)	Accum. Lengths
------------------	-------------	------------	----------	------------	----------------

Change Over Sub	1.00			3813.00	
Shut In Tool	5.00			3818.00	
Hydraulic tool	5.00			3823.00	
Packer	5.00			3828.00	20.00 Bottom Of Top Packer
Packer	4.00			3832.00	
Stubb	1.00			3833.00	
Recorder	0.00	8675	Inside	3833.00	
Recorder	0.00	8650	Outside	3833.00	
Perforations	23.00			3856.00	
Change Over Sub	1.00			3857.00	
Drill Pipe	32.00			3889.00	
Change Over Sub	1.00			3890.00	
Bullnose	3.00			3893.00	61.00 Bottom Packers & Anchor

Total Tool Length: 81.00



**TRILOBITE
TESTING, INC**

DRILL STEM TEST REPORT

FLUID SUMMARY

Palomino Petroleum Inc.
4924 SE 84 St
Wichita KS 67114-8827
ATTN: Phil Askey

7-15s-25w Trego KS
Revalo #1
Job Ticket: 48349 **DST#: 1**
Test Start: 2012.08.18 @ 03:15:00

Mud and Cushion Information

Mud Type: Gel Chem	Cushion Type:	Oil API:	deg API
Mud Weight: 9.00 lb/gal	Cushion Length: ft	Water Salinity:	ppm
Viscosity: 48.00 sec/qt	Cushion Volume: bbl		
Water Loss: 7.98 in ³	Gas Cushion Type:		
Resistivity: 0.00 ohm.m	Gas Cushion Pressure: psig		
Salinity: 5100.00 ppm			
Filter Cake: 1.00 inches			

Recovery Information

Recovery Table

Length ft	Description	Volume bbl
80.00	100% Mud with oil spots	0.393

Total Length: 80.00 ft Total Volume: 0.393 bbl
 Num Fluid Samples: 0 Num Gas Bombs: 0 Serial #:
 Laboratory Name: Laboratory Location:
 Recovery Comments:

Serial #: 8675

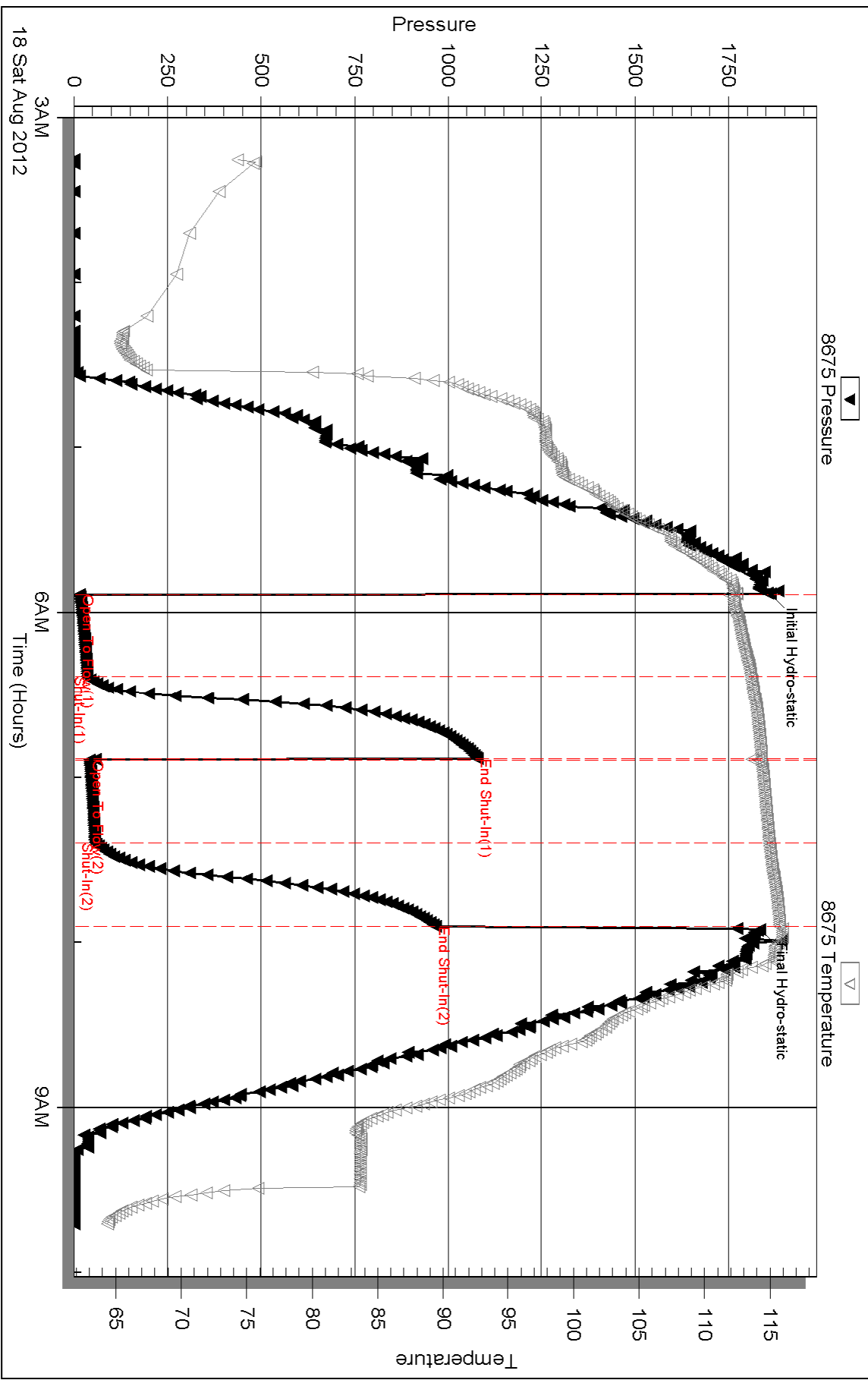
Inside

Palomino Petroleum Inc.

Revilo #1

DST Test Number: 1

Pressure vs. Time



Triobite Testing, Inc

Ref. No: 48349

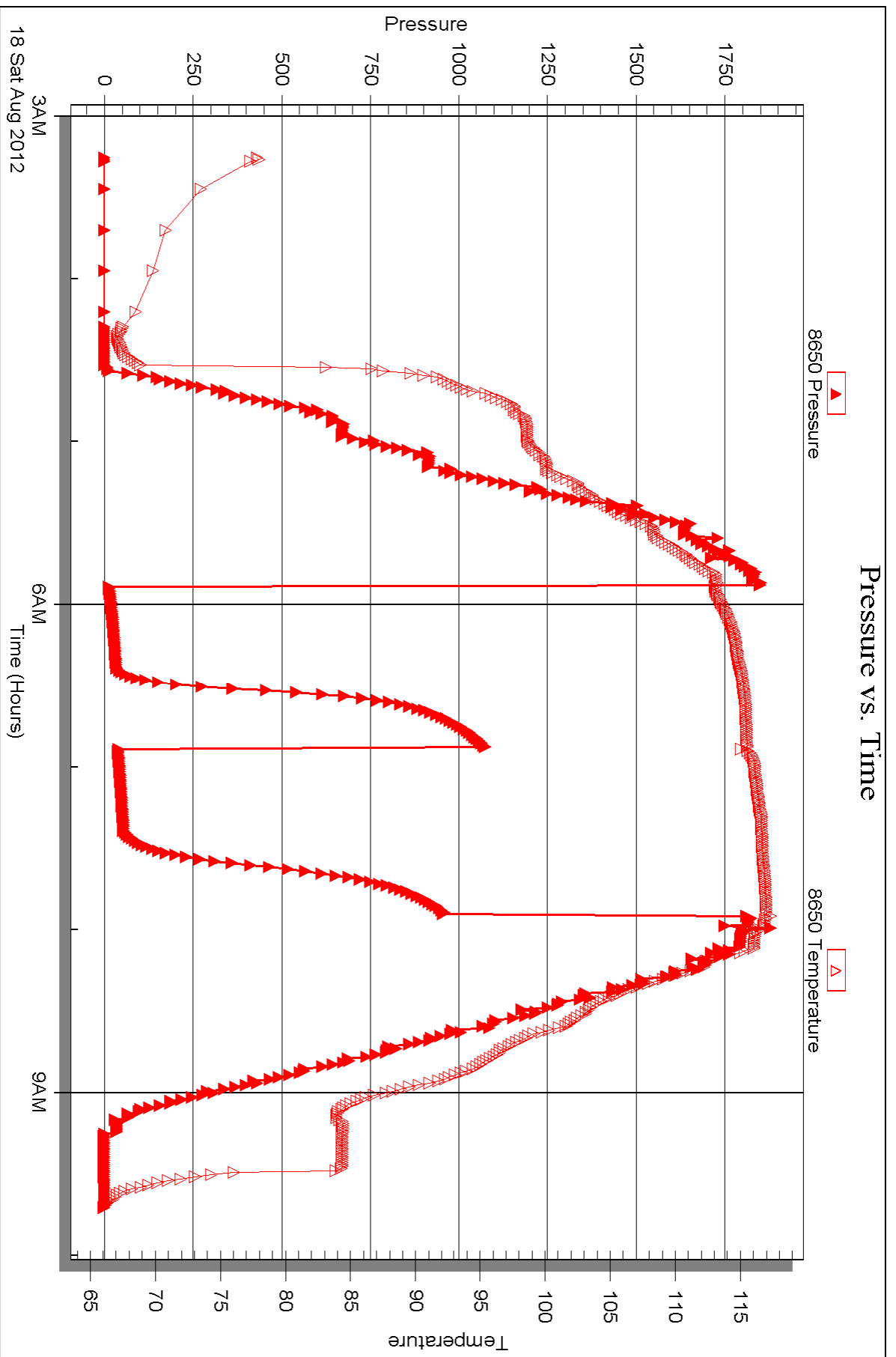
Printed: 2012.08.22 @ 14:02:05

Serial #: 8650

Outside Palomino Petroleum Inc.

Revilo #1

DST Test Number: 1



Triobite Testing, Inc

Ref. No: 48349

Printed: 2012.08.22 @ 14:02:05



DRILL STEM TEST REPORT

Prepared For: **Palomino Petroleum Inc.**

4924 SE 84 St
Wichita KS 67114-8827

ATTN: Phil Askey

Revalo #1

7-15s-25w Trego KS

Start Date: 2012.08.18 @ 20:35:00

End Date: 2012.08.19 @ 03:47:00

Job Ticket #: 48350 DST #: 2

Trilobite Testing, Inc

PO Box 362 Hays, KS 67601

ph: 785-625-4778 fax: 785-625-5620

Printed: 2012.08.22 @ 14:00:51



TRILOBITE TESTING, INC

DRILL STEM TEST REPORT

Palomino Petroleum Inc.
 4924 SE 84 St
 Wichita KS 67114-8827
 ATTN: Phil Askey

7-15s-25w Trego KS
Revilo #1
 Job Ticket: 48350 **DST#: 2**
 Test Start: 2012.08.18 @ 20:35:00

GENERAL INFORMATION:

Formation: **Kansas City "K - L"**
 Deviated: No Whipstock: ft (KB)
 Time Tool Opened: 23:46:00
 Time Test Ended: 03:47:00
 Interval: **3917.00 ft (KB) To 3990.00 ft (KB) (TVD)**
 Total Depth: 3990.00 ft (KB) (TVD)
 Hole Diameter: 7.88 inches Hole Condition: Fair
 Test Type: Conventional Bottom Hole (Reset)
 Tester: Jace McKinney
 Unit No: 46
 Reference Elevations: 2377.00 ft (KB)
 2369.00 ft (CF)
 KB to GR/CF: 8.00 ft

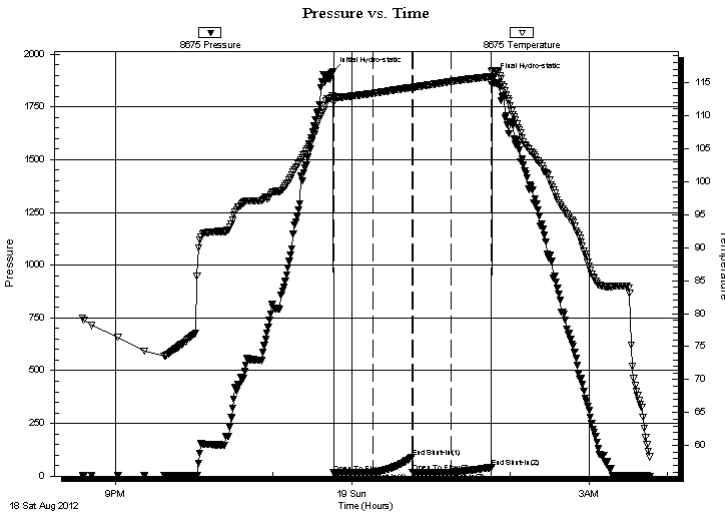
Serial #: 8675

Inside

Press @ RunDepth: 19.09 psig @ 3918.00 ft (KB) Capacity: 8000.00 psig
 Start Date: 2012.08.18 End Date: 2012.08.19 Last Calib.: 2012.08.19
 Start Time: 20:35:15 End Time: 03:47:00 Time On Btm: 2012.08.18 @ 23:45:30
 Time Off Btm: 2012.08.19 @ 01:47:00

TEST COMMENT: Built to 1/2". Died to 1/4" blow
 No return blow
 No blow
 No return blow

PRESSURE SUMMARY



Time (Min.)	Pressure (psig)	Temp (deg F)	Annotation
0	1918.66	113.03	Initial Hydro-static
1	15.39	111.97	Open To Flow (1)
31	17.59	113.36	Shut-In(1)
61	90.74	114.27	End Shut-In(1)
61	17.85	114.23	Open To Flow (2)
90	19.09	115.15	Shut-In(2)
121	41.89	115.89	End Shut-In(2)
122	1891.20	116.83	Final Hydro-static

Recovery

Length (ft)	Description	Volume (bbl)
5.00	100% Mud	0.02

* Recovery from multiple tests

Gas Rates

Choke (inches)	Pressure (psig)	Gas Rate (Mcf/d)



**TRILOBITE
TESTING, INC**

DRILL STEM TEST REPORT

TOOL DIAGRAM

Palomino Petroleum Inc.

7-15s-25w Trego KS

4924 SE 84 St
Wichita KS 67114-8827

Revalo #1

Job Ticket: 48350

DST#: 2

ATTN: Phil Askey

Test Start: 2012.08.18 @ 20:35:00

Tool Information

Drill Pipe:	Length: 3826.83 ft	Diameter: 3.80 inches	Volume: 53.68 bbl	Tool Weight: 15000.00 lb
Heavy Wt. Pipe:	Length: 0.00 ft	Diameter: 0.00 inches	Volume: 0.00 bbl	Weight set on Packer: 30000.00 lb
Drill Collar:	Length: 93.72 ft	Diameter: 2.25 inches	Volume: 0.46 bbl	Weight to Pull Loose: 50000.00 lb
			<u>Total Volume: 54.14 bbl</u>	Tool Chased 0.00 ft
Drill Pipe Above KB:	23.55 ft			String Weight: Initial 40000.00 lb
Depth to Top Packer:	3917.00 ft			Final 40000.00 lb
Depth to Bottom Packer:	ft			
Interval between Packers:	73.00 ft			
Tool Length:	93.00 ft			
Number of Packers:	2	Diameter: 6.75 inches		

Tool Comments:

Tool Description

Tool Description	Length (ft)	Serial No.	Position	Depth (ft)	Accum. Lengths
Change Over Sub	1.00			3898.00	
Shut In Tool	5.00			3903.00	
Hydraulic tool	5.00			3908.00	
Packer	5.00			3913.00	20.00 Bottom Of Top Packer
Packer	4.00			3917.00	
Stubb	1.00			3918.00	
Recorder	0.00	8675	Inside	3918.00	
Recorder	0.00	8650	Outside	3918.00	
Perforations	35.00			3953.00	
Change Over Sub	1.00			3954.00	
Drill Pipe	32.00			3986.00	
Change Over Sub	1.00			3987.00	
Bullnose	3.00			3990.00	73.00 Bottom Packers & Anchor

Total Tool Length: 93.00



**TRILOBITE
TESTING, INC**

DRILL STEM TEST REPORT

FLUID SUMMARY

Palomino Petroleum Inc.
4924 SE 84 St
Wichita KS 67114-8827
ATTN: Phil Askey

7-15s-25w Trego KS
Revalo #1
Job Ticket: 48350 **DST#: 2**
Test Start: 2012.08.18 @ 20:35:00

Mud and Cushion Information

Mud Type: Gel Chem	Cushion Type:	Oil API:	deg API
Mud Weight: 9.00 lb/gal	Cushion Length: ft	Water Salinity:	ppm
Viscosity: 45.00 sec/qt	Cushion Volume: bbl		
Water Loss: 8.78 in ³	Gas Cushion Type:		
Resistivity: 0.00 ohm.m	Gas Cushion Pressure: psig		
Salinity: 4800.00 ppm			
Filter Cake: 1.00 inches			

Recovery Information

Recovery Table

Length ft	Description	Volume bbl
5.00	100% Mud	0.025

Total Length: 5.00 ft Total Volume: 0.025 bbl

Num Fluid Samples: 0 Num Gas Bombs: 0 Serial #:

Laboratory Name: Laboratory Location:

Recovery Comments:

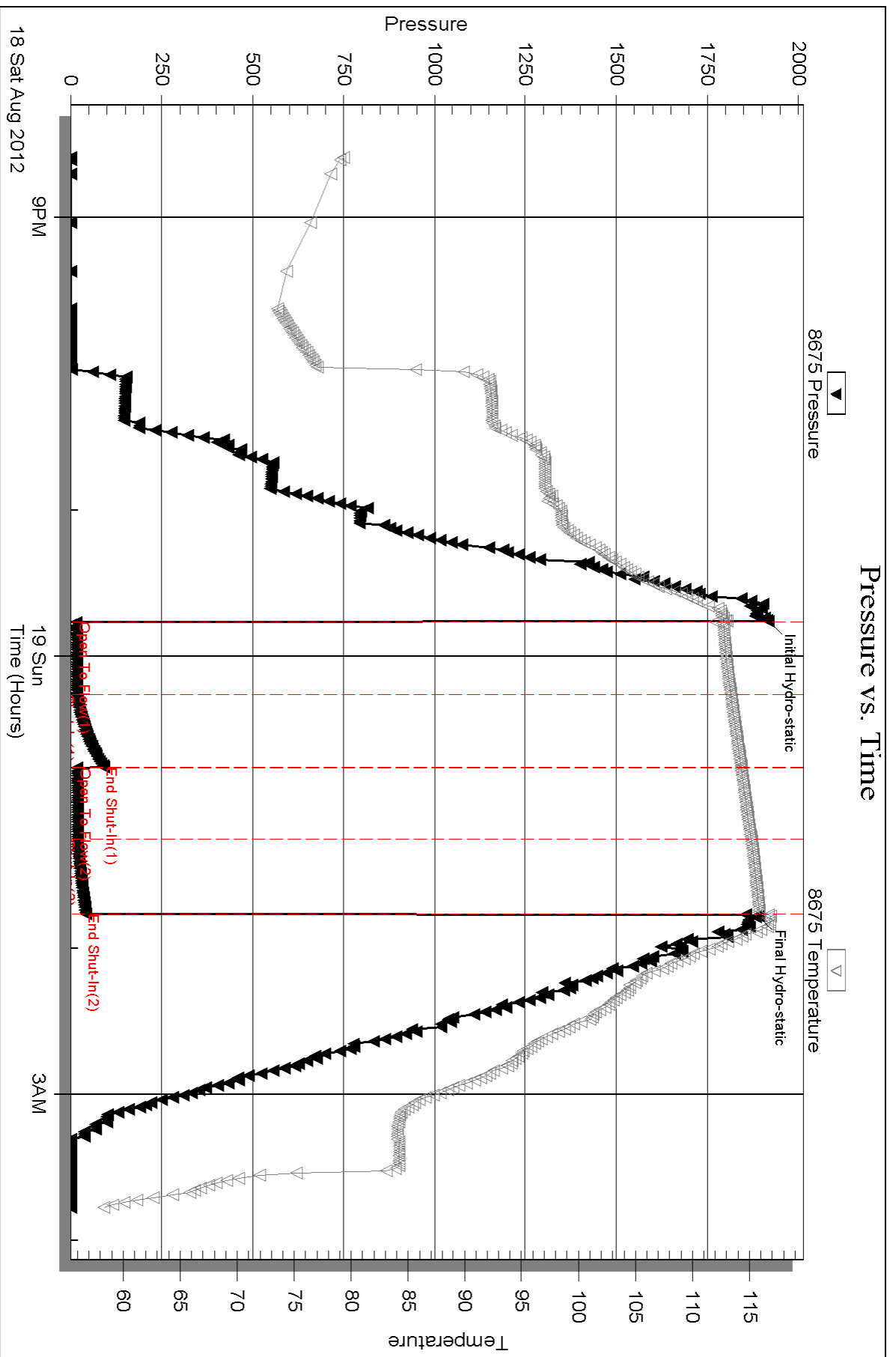
Serial #: 8675

Inside

Palomino Petroleum Inc.

Revilo #1

DST Test Number: 2

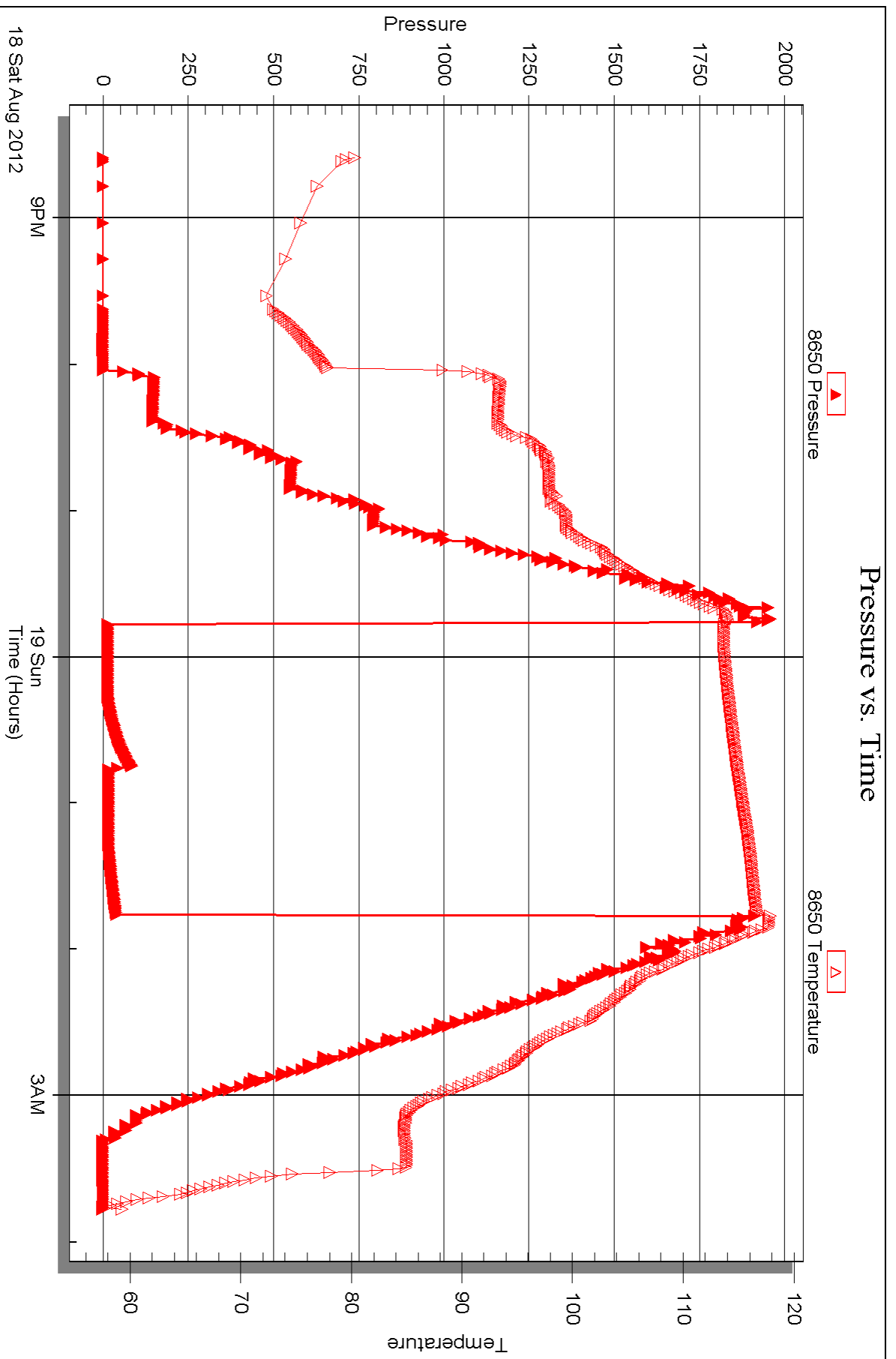


Serial #: 8650

Outside Palomino Petroleum Inc.

Revilo #1

DST Test Number: 2



Triobite Testing, Inc

Ref. No: 48350

Printed: 2012.08.22 @ 14:00:55



DRILL STEM TEST REPORT

Prepared For: **Palomino Petroleum Inc.**

4924 SE 84 St
Wichita KS 67114-8827

ATTN: Phil Askey

Revilo #1

7-15s-25w Trego KS

Start Date: 2012.08.20 @ 04:00:00

End Date: 2012.08.20 @ 11:30:30

Job Ticket #: 48876 DST #: 3

Trilobite Testing, Inc
PO Box 362 Hays, KS 67601
ph: 785-625-4778 fax: 785-625-5620

Printed: 2012.08.22 @ 14:00:01



**TRILOBITE
TESTING, INC**

DRILL STEM TEST REPORT

Palomino Petroleum Inc.
4924 SE 84 St
Wichita KS 67114-8827
ATTN: Phil Askey

7-15s-25w Trego KS

Revilo #1

Job Ticket: 48876

DST#: 3

Test Start: 2012.08.20 @ 04:00:00

GENERAL INFORMATION:

Formation: **Miss**
 Deviated: No Whipstock: ft (KB)
 Time Tool Opened: 06:41:30
 Time Test Ended: 11:30:30
 Interval: **4224.00 ft (KB) To 4302.00 ft (KB) (TVD)**
 Total Depth: 4302.00 ft (KB) (TVD)
 Hole Diameter: 7.88 inches Hole Condition: Fair
 Test Type: Conventional Bottom Hole (Reset)
 Tester: Jace McKinney
 Unit No: 46
 Reference Elevations: 2377.00 ft (KB)
 2369.00 ft (CF)
 KB to GR/CF: 8.00 ft

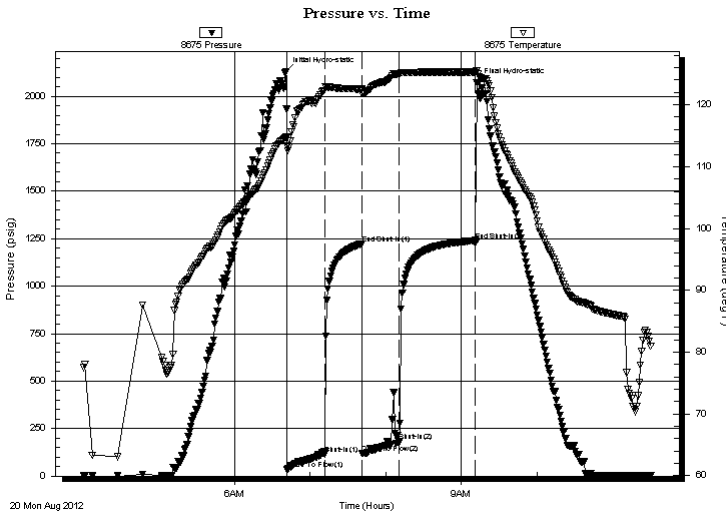
Serial #: 8675

Inside

Press @ Run Depth: 184.82 psig @ 4225.00 ft (KB) Capacity: 8000.00 psig
 Start Date: 2012.08.20 End Date: 2012.08.20 Last Calib.: 2012.08.20
 Start Time: 04:00:15 End Time: 11:30:30 Time On Btm: 2012.08.20 @ 06:40:45
 Time Off Btm: 2012.08.20 @ 09:12:15

TEST COMMENT: B.O.B. in 13 1/2 min.
 Bled off for 5 min. No return blow
 B.O.B. in 18 1/2 min.
 Bled off for 5 min. No return blow

PRESSURE SUMMARY



Time (Min.)	Pressure (psig)	Temp (deg F)	Annotation
0	2130.90	114.68	Initial Hydro-static
1	33.67	113.40	Open To Flow (1)
31	117.34	122.37	Shut-In(1)
61	1222.61	122.51	End Shut-In(1)
61	118.67	121.80	Open To Flow (2)
90	184.82	125.00	Shut-In(2)
151	1240.15	125.26	End Shut-In(2)
152	2071.85	125.56	Final Hydro-static

Recovery

Length (ft)	Description	Volume (bbl)
0.00	82 Feet Gas In Pipe	0.00
163.00	gcom 10%G 20%O 70%M	1.43
185.00	ocgm 10%O 30%G 60%M	2.60
2.00	Clean Oil	0.03

* Recovery from multiple tests

Gas Rates

	Choke (inches)	Pressure (psig)	Gas Rate (Mcf/d)



**TRILOBITE
TESTING, INC**

DRILL STEM TEST REPORT

TOOL DIAGRAM

Palomino Petroleum Inc.

7-15s-25w Trego KS

4924 SE 84 St
Wichita KS 67114-8827

Revilo #1

Job Ticket: 48876

DST#: 3

ATTN: Phil Askey

Test Start: 2012.08.20 @ 04:00:00

Tool Information

Drill Pipe:	Length: 4109.44 ft	Diameter: 3.80 inches	Volume: 57.64 bbl	Tool Weight: 15000.00 lb
Heavy Wt. Pipe:	Length: 0.00 ft	Diameter: 0.00 inches	Volume: 0.00 bbl	Weight set on Packer: 30000.00 lb
Drill Collar:	Length: 93.72 ft	Diameter: 2.25 inches	Volume: 0.46 bbl	Weight to Pull Loose: 65000.00 lb
			<u>Total Volume: 58.10 bbl</u>	Tool Chased 0.00 ft
Drill Pipe Above KB:	6.66 ft			String Weight: Initial 34000.00 lb
Depth to Top Packer:	4224.00 ft			Final 36000.00 lb
Depth to Bottom Packer:	ft			
Interval between Packers:	78.00 ft			
Tool Length:	105.50 ft			
Number of Packers:	2	Diameter: 6.75 inches		

Tool Comments:

Tool Description

Tool Description	Length (ft)	Serial No.	Position	Depth (ft)	Accum. Lengths
Change Over Sub	1.00			4197.50	
Shut In Tool	5.00			4202.50	
Hydraulic tool	5.00			4207.50	
Jars	5.00			4212.50	
Safety Joint	2.50			4215.00	
Packer	5.00			4220.00	27.50 Bottom Of Top Packer
Packer	4.00			4224.00	
Stubb	1.00			4225.00	
Recorder	0.00	8675	Inside	4225.00	
Recorder	0.00	8650	Outside	4225.00	
Perforations	10.00			4235.00	
Change Over Sub	1.00			4236.00	
Drill Pipe	62.00			4298.00	
Change Over Sub	1.00			4299.00	
Bullnose	3.00			4302.00	78.00 Bottom Packers & Anchor

Total Tool Length: 105.50



**TRILOBITE
TESTING, INC**

DRILL STEM TEST REPORT

FLUID SUMMARY

Palomino Petroleum Inc.

7-15s-25w Trego KS

4924 SE 84 St
Wichita KS 67114-8827

Revalo #1

Job Ticket: 48876

DST#: 3

ATTN: Phil Askey

Test Start: 2012.08.20 @ 04:00:00

Mud and Cushion Information

Mud Type: Gel Chem

Cushion Type:

Oil API:

deg API

Mud Weight: 9.00 lb/gal

Cushion Length:

ft

Water Salinity:

ppm

Viscosity: 44.00 sec/qt

Cushion Volume:

bbbl

Water Loss: 10.38 in³

Gas Cushion Type:

Resistivity: 0.00 ohm.m

Gas Cushion Pressure:

psig

Salinity: 5400.00 ppm

Filter Cake: 1.00 inches

Recovery Information

Recovery Table

Length ft	Description	Volume bbbl
0.00	82 Feet Gas In Pipe	0.000
163.00	gcom 10%G 20%O 70%M	1.433
185.00	ocgm 10%O 30%G 60%M	2.595
2.00	Clean Oil	0.028

Total Length: 350.00 ft

Total Volume: 4.056 bbl

Num Fluid Samples: 0

Num Gas Bombs: 0

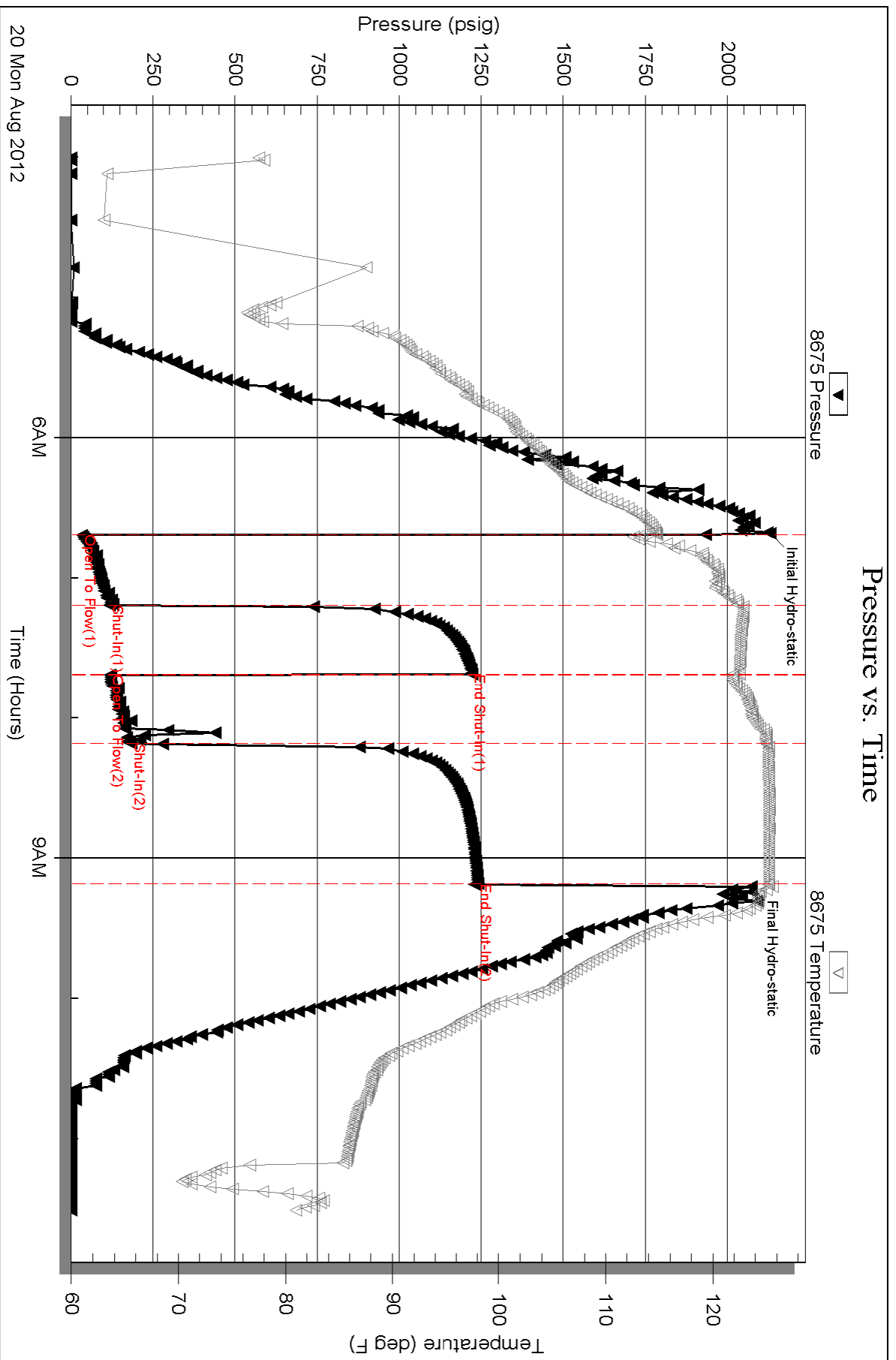
Serial #:

Laboratory Name:

Laboratory Location:

Recovery Comments:

Pressure vs. Time

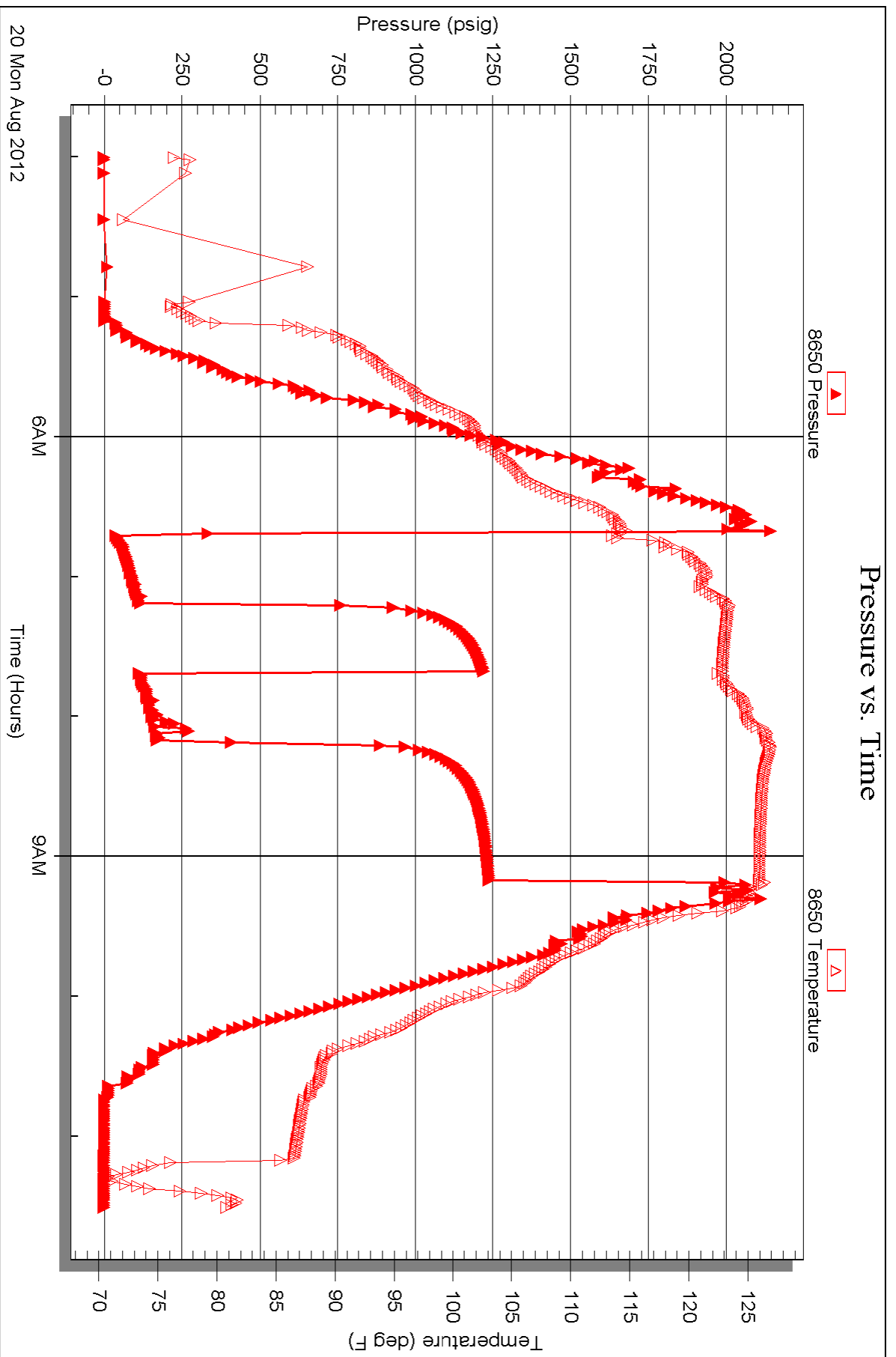


Serial #: 8650

Outside Palomino Petroleum Inc.

Revilo #1

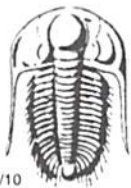
DST Test Number: 3



Triobite Testing, Inc

Ref. No: 48876

Printed: 2012.08.22 @ 14:00:05



TRILOBITE TESTING INC.

P.O. Box 1733 • Hays, Kansas 67601

Test Ticket

NO. 48349

Well Name & No. Revalo #1 Test No. 1 Date 8/18/12
 Company Palomino Petroleum Inc. Elevation 2377 KB 2369 GL
 Address 4424 SE 84ST Newton KS 67114-8827
 Co. Rep / Geo. Phil Ashby Rig Foss. 1 Rig 2
 Location: Sec. 7 Twp. 15S Rge. 25W Co. Trego State KS

Interval Tested 3832 - 3893 Zone Tested Kansas City "H-I"
 Anchor Length 61 Drill Pipe Run 3730.72 Mud Wt. 8.8
 Top Packer Depth 3828 Drill Collars Run 93.72 Vis 48
 Bottom Packer Depth 3832 Wt. Pipe Run _____ WL 8.0
 Total Depth 3893 Chlorides 5,100 ppm System LCM 1

Blow Description Built to 2 3/4" below
No return below
Built to 1" below, bled to 1/2" below
No return below

Rec	Feet of	%gas	%oil	%water	%mud
<u>80</u>	<u>Mud with oil spots</u>			<u>100</u>	
Rec	Feet of	%gas	%oil	%water	%mud
Rec	Feet of	%gas	%oil	%water	%mud
Rec	Feet of	%gas	%oil	%water	%mud

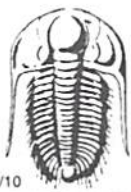
Rec Total 80 BHT 115 Gravity _____ API RW _____ @ _____ ° F Chlorides _____ ppm

(A) Initial Hydrostatic 1,862 Test 1250 T-On Location 2:25
 (B) First Initial Flow 15 Jars T-Started 3:15
 (C) First Final Flow 36 Safety Joint T-Open 5:53
 (D) Initial Shut-In 1,079 Circ Sub N/C T-Pulled 7:54
 (E) Second Initial Flow 42 Hourly Standby T-Out 9:43
 (F) Second Final Flow 57 Mileage 120 RT 186 Comments _____
 (G) Final Shut-In 9 lolo Sampler _____
 (H) Final Hydrostatic 1,834 Straddle _____ Ruined Shale Packer _____
 Shale Packer _____ Ruined Packer _____
 Extra Packer _____ Extra Copies _____

Initial Open 30
 Initial Shut-In 30
 Final Flow 30
 Final Shut-In 30

Sub Total 1436
 Total 1436
 MP/DST Disc't _____

Approved By Phil Ashby Our Representative [Signature]
 TriLOBITE Testing Inc. shall not be liable for damaged of any kind of the property or personnel of the one for whom a test is made, or for any loss suffered or sustained, directly or indirectly, through the use of its equipment, or its statements or opinion concerning the results of any test, tools lost or damaged in the hole shall be paid for at cost by the party for whom the test is made.



TRILOBITE TESTING INC.

P.O. Box 1733 • Hays, Kansas 67601

Test Ticket

NO. 48350

Well Name & No. Bevilo #2 Test No. 2 Date 8/18/12 8/19/12
 Company Palomino Petroleum Inc. Elevation 2377 KB 2369 GL
 Address 4924 SE 84 ST Newton 155 67114-8827
 Co. Rep / Geo. Phil Askey Rig Fossil Rig 2
 Location: Sec. 7 Twp. 155 Rge. 25w Co. Trigo State K5

Interval Tested 3917-3990 Zone Tested Kansas City "K; L"
 Anchor Length 73 Drill Pipe Run 3,826.83 Mud Wt. 9.1
 Top Packer Depth 3913 Drill Collars Run 93.72 Vis 45
 Bottom Packer Depth 3917 Wt. Pipe Run _____ WL 8.8
 Total Depth 3990 Chlorides 4,800 ppm System LCM 1

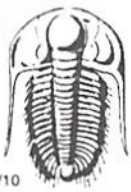
Blow Description Built to 1/2" below. Died to 1/4" below
No return below
No below
No return below

Rec	Feet of	%gas	%oil	%water	%mud
<u>5</u>	<u>Mud</u>			<u>100</u>	
Rec	Feet of	%gas	%oil	%water	%mud
Rec	Feet of	%gas	%oil	%water	%mud
Rec	Feet of	%gas	%oil	%water	%mud

Rec Total 5 BHT 115 Gravity _____ API RW _____ @ _____ ° F Chlorides _____ ppm

(A) Initial Hydrostatic 1,919 Test 1150 T-On Location 19:50
 (B) First Initial Flow 15 Jars _____ T-Started 20:35
 (C) First Final Flow 18 Safety Joint _____ T-Open 23:46
 (D) Initial Shut-In 91 Circ Sub N/C T-Pulled 1:46
 (E) Second Initial Flow 18 Hourly Standby _____ T-Out 3:47
 (F) Second Final Flow 19 Mileage 120 BT 186 Comments _____
 (G) Final Shut-In 42 Sampler _____
 (H) Final Hydrostatic 1,891 Straddle _____ Ruined Shale Packer _____
 Shale Packer _____ Ruined Packer _____
 Extra Packer _____ Extra Copies _____
 Initial Open 30 Extra Recorder _____ Sub Total 0
 Initial Shut-In 30 Day Standby _____ Total 1436
 Final Flow 30 Accessibility _____ MP/DST Disc't _____
 Final Shut-In 30 Sub Total 1436

Approved By Phil Askey Our Representative [Signature]
 Trilobite Testing Inc. shall not be liable for damaged of any kind of the property or personnel of the one for whom a test is made, or for any loss suffered or sustained, directly or indirectly, through the use of its equipment, or its statements or opinion concerning the results of any test, tools lost or damaged in the hole shall be paid for at cost by the party for whom the test is made.



TRILOBITE TESTING INC.

P.O. Box 1733 • Hays, Kansas 67601

Test Ticket

NO. 48876

Well Name & No. Bevilo # 1 Test No. 3 Date 8/20/12
 Company Palomino Petroleum Inc. Elevation 2372 KB 2369 GL
 Address 4924 SE 84 ST Newton KS 67114-8827
 Co. Rep / Geo. Phil Asbey Rig Fossil Rig 2
 Location: Sec. 7 Twp. 15S Rge. 25W Co. Trego State KS

Interval Tested 4224-4302 Zone Tested Miss.
 Anchor Length 78 Drill Pipe Run 4,109.44 Mud Wt. 9.3
 Top Packer Depth 4220 Drill Collars Run 93.72 Vis 44
 Bottom Packer Depth 4224 Wt. Pipe Run _____ WL 10.4
 Total Depth 4302 Chlorides 5,400 ppm System LCM 1

Blow Description B.O.B. in 13 1/2 min.
Bled off for 5 min. No return below
B.O.B. in 18 1/2 min.

Bled off for 5 min. No return below

Rec	Feet of	%gas	%oil	%water	%mud
<u>0</u>	<u>82 Feet Gas In Pipe</u>				
<u>18.5</u>	<u>OCOM</u>	<u>30</u>	<u>10</u>	<u>60</u>	
<u>163</u>	<u>6COM</u>	<u>10</u>	<u>20</u>	<u>70</u>	
<u>2</u>	<u>Clean oil</u>		<u>100</u>		

Rec Total 350 BHT 125 Gravity _____ API RW _____ @ _____ °F Chlorides _____ ppm

(A) Initial Hydrostatic <u>2,131</u>	<input checked="" type="checkbox"/> Test 1250	T-On Location <u>2:30</u>
(B) First Initial Flow <u>34</u>	<input checked="" type="checkbox"/> Jars 250	T-Started <u>4:00</u>
(C) First Final Flow <u>117</u>	<input checked="" type="checkbox"/> Safety Joint 75	T-Open <u>6:41</u>
(D) Initial Shut-In <u>1,223</u>	<input checked="" type="checkbox"/> Circ Sub <u>N/C</u>	T-Pulled <u>9:11</u>
(E) Second Initial Flow <u>119</u>	<input type="checkbox"/> Hourly Standby _____	T-Out <u>11:31</u>
(F) Second Final Flow <u>185</u>	<input checked="" type="checkbox"/> Mileage <u>120 BT</u> 186	Comments _____
(G) Final Shut-In <u>1,240</u>	<input type="checkbox"/> Sampler _____	
(H) Final Hydrostatic <u>2,072</u>	<input type="checkbox"/> Straddle _____	<input type="checkbox"/> Ruined Shale Packer _____
	<input type="checkbox"/> Shale Packer _____	<input checked="" type="checkbox"/> Ruined Packer 320
	<input type="checkbox"/> Extra Packer _____	<input type="checkbox"/> Extra Copies _____
Initial Open <u>30</u>	<input type="checkbox"/> Extra Recorder _____	Sub Total <u>320</u>
Initial Shut-In <u>30</u>	<input type="checkbox"/> Day Standby _____	Total <u>2081</u>
Final Flow <u>30</u>	<input type="checkbox"/> Accessibility _____	MP/DST Disc't _____
Final Shut-In <u>60</u>	Sub Total <u>1761</u>	

Approved By Phil Asbey Our Representative [Signature]
 TriLOBITE TESTING INC. shall not be liable for damaged of any kind of the property or personnel of the one for whom a test is made, or for any loss suffered or sustained, directly or indirectly, through the use of its equipment, or its statements or opinion concerning the results of any test. Tools lost or damaged in the hole shall be paid for at cost by the party for whom the test is made.