

Fall & Associates

State and Elevation Service

710 W. 5th Street

P.O. Box 404

Concordia, MO. 64601

1-800-536-2021

Date 10-11-12

Invoice Number 10-9-12

MURFIN DRILLING

Operator

1-22

Number

PTL

Farm Name

Rawlins-KS

County-State

22

S

25

T

36w

R

1550'FSL 2210'FEL

Location

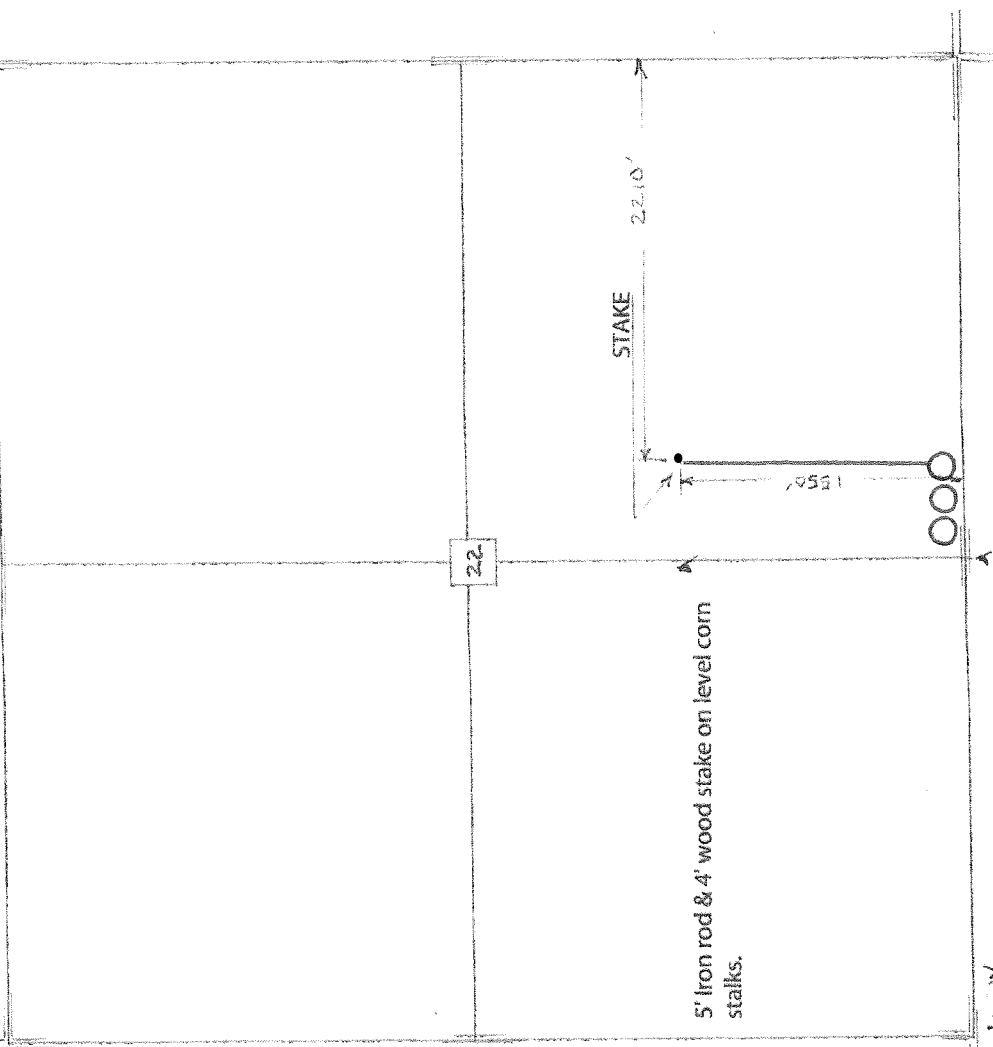
Murfin Drilling
250 N. Water
Suite 300
Wichita, KS. 67202

Elevation 3334 Gr.

Ordered By: Shauna

Scale 1" = 100'

Scale 1" = 100'



5' iron rod & 4' wood stake on level corn stalks.

1 in. = 5 m. S

TO Mc DONALD