



**TRILOBITE  
TESTING, INC.**

# DRILL STEM TEST REPORT

Berexco, LLC

**1-31s-35w Stevens,KS**

2020 N Bramblewood  
Wichita KS 67206

**Cutter KGS**

Job Ticket: 44443

**DST#: 1**

ATTN: Dana Wreath

Test Start: 2012.10.01 @ 21:43:15

## GENERAL INFORMATION:

Formation: **Reagan- Granite**

Deviated: No Whipstock: ft (KB)

Time Tool Opened: 02:17:00

Time Test Ended: 09:46:30

Test Type: Conventional Bottom Hole (Initial)

Tester: Mike Roberts

Unit No: 65

**Interval: 7522.00 ft (KB) To 7735.00 ft (KB) (TVD)**

Reference Elevations: 2933.00 ft (KB)

Total Depth: 7735.00 ft (KB) (TVD)

2923.00 ft (CF)

Hole Diameter: 7.88 inches Hole Condition: Fair

KB to GR/CF: 10.00 ft

**Serial #: 6668 Outside**

Press @ RunDepth: 510.96 psig @ 7524.00 ft (KB)

Capacity: 8000.00 psig

Start Date: 2012.10.01

End Date:

2012.10.02

Last Calib.: 2012.10.02

Start Time: 21:43:15

End Time:

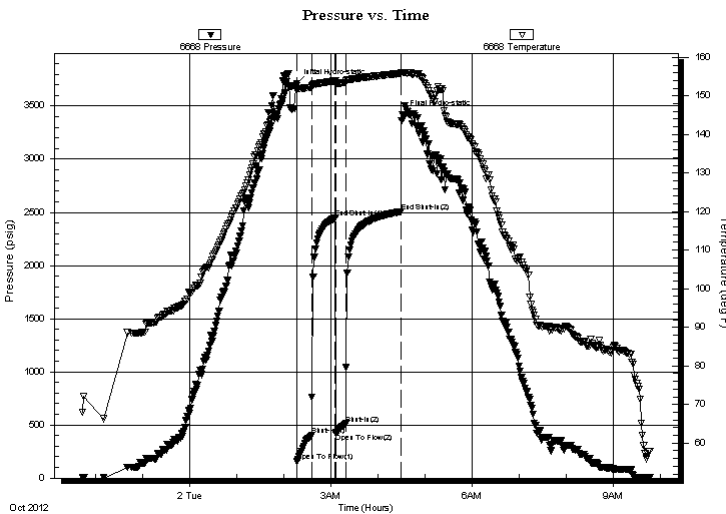
09:46:30

Time On Btm: 2012.10.02 @ 02:16:30

Time Off Btm: 2012.10.02 @ 04:31:15

**TEST COMMENT:** IF:BOB in 10 min.  
IS:No return blow  
FF:Built to 8" blow  
FS:No return blow

## PRESSURE SUMMARY



Time (Min.)	Pressure (psig)	Temp (deg F)	Annotation
0	3710.17	152.76	Initial Hydro-static
1	157.53	151.72	Open To Flow (1)
19	402.68	152.29	Shut-In(1)
49	2448.73	153.89	End Shut-In(1)
50	421.78	153.08	Open To Flow (2)
63	510.96	153.48	Shut-In(2)
133	2507.02	155.83	End Shut-In(2)
135	3419.00	156.02	Final Hydro-static

## Recovery

Length (ft)	Description	Volume (bbl)
824.00	sw 100% sw	6.57

## Gas Rates

Choke (inches)	Pressure (psig)	Gas Rate (Mcf/d)



**TRILOBITE  
TESTING, INC.**

**DRILL STEM TEST REPORT**

**FLUID SUMMARY**

Berexco, LLC

**1-31s-35w Stevens,KS**

2020 N Bramblewood  
Wichita KS 67206

**Cutter KGS**

Job Ticket: 44443

**DST#: 1**

ATTN: Dana Wreath

Test Start: 2012.10.01 @ 21:43:15

**Mud and Cushion Information**

Mud Type: Gel Chem

Cushion Type:

Oil API:

0 deg API

Mud Weight: 9.00 lb/gal

Cushion Length:

ft

Water Salinity:

50000 ppm

Viscosity: 85.00 sec/qt

Cushion Volume:

bbbl

Water Loss: 8.37 in<sup>3</sup>

Gas Cushion Type:

Resistivity: 0.00 ohm.m

Gas Cushion Pressure:

psig

Salinity: 900.00 ppm

Filter Cake: 1.00 inches

**Recovery Information**

Recovery Table

Length ft	Description	Volume bbl
824.00	sw 100% sw	6.567

Total Length: 824.00 ft      Total Volume: 6.567 bbl

Num Fluid Samples: 0

Num Gas Bombs: 0

Serial #:

Laboratory Name:

Laboratory Location:

Recovery Comments: RW= .247 @ 48.2\*=50,000 ppm

### Pressure vs. Time

