



**TRILOBITE
TESTING, INC.**

DRILL STEM TEST REPORT

Caerus Kansas, LLC

31-17s-13w-Barton

PO Box 1378
Hays, KS. 67601

Mortimer #31-32B

Job Ticket: 47846

DST#: 3

ATTN: Justin Carter

Test Start: 2012.08.17 @ 00:24:41

GENERAL INFORMATION:

Formation: **H-I-J**

Deviated: No Whipstock: 0.00 ft (KB)

Time Tool Opened: 02:19:26

Time Test Ended: 06:03:41

Test Type: Conventional Bottom Hole (Reset)

Tester: Jason McLemore

Unit No: 54

Interval: 3251.00 ft (KB) To 3306.00 ft (KB) (TVD)

Reference Elevations: 1870.00 ft (KB)

Total Depth: 3306.00 ft (KB) (TVD)

1860.00 ft (CF)

Hole Diameter: 7.80 inches Hole Condition: Good

KB to GR/CF: 10.00 ft

Serial #: 8366

Inside

Press @ Run Depth: 36.78 psig @ 3288.00 ft (KB)

Capacity: 8000.00 psig

Start Date: 2012.08.17

End Date:

2012.08.17

Last Calib.:

2012.08.17

Start Time: 00:24:43

End Time:

06:03:41

Time On Btm:

2012.08.17 @ 02:19:11

Time Off Btm:

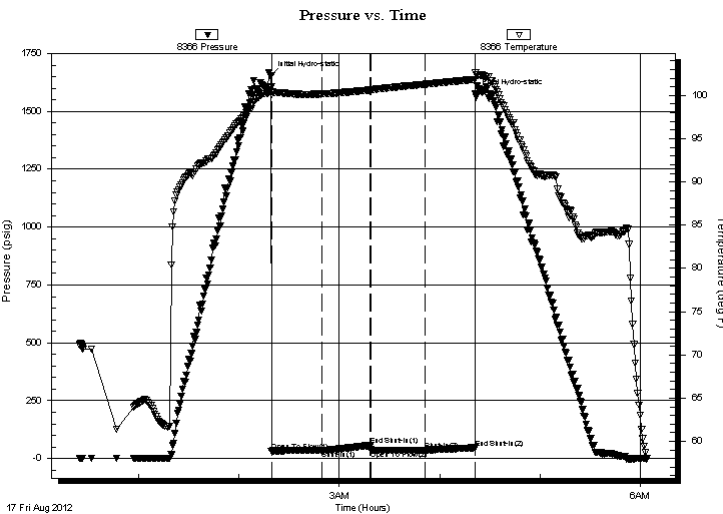
2012.08.17 @ 04:21:26

TEST COMMENT: IFP-Weak Blow , Built to 1/2" in 10 Min., Died

ISI-Dead

FFP-Dead

FSI-Dead



PRESSURE SUMMARY

Time (Min.)	Pressure (psig)	Temp (deg F)	Annotation
0	1655.39	100.96	Initial Hydro-static
1	32.66	100.14	Open To Flow (1)
31	35.72	100.18	Shut-In(1)
60	56.64	100.64	End Shut-In(1)
60	35.32	100.64	Open To Flow (2)
92	36.78	101.30	Shut-In(2)
122	46.51	101.86	End Shut-In(2)
123	1578.39	102.67	Final Hydro-static

Recovery

Length (ft)	Description	Volume (bbl)
5.00	Mud W/Oil Scum	0.07

* Recovery from multiple tests

Gas Rates

Choke (inches)	Pressure (psig)	Gas Rate (Mcf/d)



**TRILOBITE
TESTING, INC.**

DRILL STEM TEST REPORT

FLUID SUMMARY

Caerus Kansas, LLC

31-17s-13w-Barton

PO Box 1378
Hays, KS. 67601

Mortimer #31-32B

Job Ticket: 47846

DST#: 3

ATTN: Justin Carter

Test Start: 2012.08.17 @ 00:24:41

Mud and Cushion Information

Mud Type: Gel Chem

Cushion Type:

Oil API:

deg API

Mud Weight: 9.00 lb/gal

Cushion Length:

ft

Water Salinity:

ppm

Viscosity: 47.00 sec/qt

Cushion Volume:

bbbl

Water Loss: 8.77 in³

Gas Cushion Type:

Resistivity: ohm.m

Gas Cushion Pressure:

psig

Salinity: 4000.00 ppm

Filter Cake: inches

Recovery Information

Recovery Table

Length ft	Description	Volume bbl
5.00	Mud W/Oil Scum	0.070

Total Length: 5.00 ft Total Volume: 0.070 bbl

Num Fluid Samples: 0

Num Gas Bombs: 0

Serial #:

Laboratory Name:

Laboratory Location:

Recovery Comments:

Pressure vs. Time

