

# Sean Deenihan Petroleum Geologist

## GEOLOGIST'S REPORT DRILLING TIME AND SAMPLE LOG

COMPANY: Falcon Exploration, Inc.  
LEASE: Cherisse Jantz #1-19(SF)  
FIELD: Wildcat  
LOCATION: 776 FSL & 1087 FEL  
SEC: 19 TWP: 28S RGE: 30W  
COUNTY: Gray STATE: Kansas  
CONTRACTOR: Duke Rig #6  
SPUD: 7/6/12 COMP: 7/1/12  
RTD: 5450' LTD: 5441'  
MUD UP: 2800' TYPE MUD: Chemical

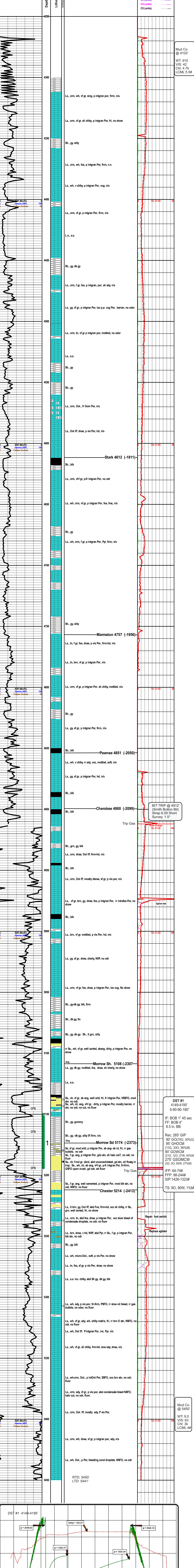
ELEVATIONS: KB 2801'  
DF: \_\_\_\_\_  
GL: 2788'  
Measurements Are All From Kelly Bushing  
CASING  
CONDUCTOR: \_\_\_\_\_  
SURFACE: 8'-5/8" x 1.865"  
PRODUCTION: \_\_\_\_\_  
ELECTRICAL SURVEYS  
CND ALL MIC SON  
REFERENCE WELL: Ron Jantz - Sec 20

Formation	Sample Tops	E-log Tops
Lansing	4612 (-1811)	4230 (-1429)
Stark	4851 (-2050)	4600 (-1799)
Pawnee	4900 (-2099)	4841 (-2040)
Cherokee	5108 (-2307)	4886 (-2085)
Morrow Sh.	5174 (-2373)	5108 (-2307)
Morrow Sd	5174 (-2373)	5174 (-2373)
Chester	5214 (-2413)	5200 (-2309)
St. Clair	5244 (-2444)	5235 (-2434)

REMARKS: The sample depths are 10-12' deeper than the Log depths. No correction was made.

Respectfully Submitted,

Sean P. Deenihan



Mud Co @ 4103'  
WT: 910  
VIS: 42  
Chl: 4.7k  
LCML 5.5#

BIT TRIP @ 4912' (Smith Button Bit)  
Strap 6.09 Short Survey. 1.5"

**DST #1**  
4149-4195'  
5-90-90-180'  
IF: BOB 1" 45 sec  
FF: BOB 4"  
8.5 in. BB  
Rec: 265' GIP  
90' GO(700, 30%G)  
95' GHOCM (11G, 330, 56%M)  
90' GOWCM (21G, 120, 27W, 40%M)  
275' GSOMCW (3G, 50, 85W, 27%M)  
IFP: 64-74#  
FFP: 98-244#  
SIP: 1426-1323#  
TS: 90, 90W, 1%M

Mud Co @ 5450'  
WT: 9.0  
VIS: 63  
Chl: 3k  
LCML 4#

