



DRILL STEM TEST REPORT

Prepared For: **Palomino Petroleum Incorporated**

4924 Southeast 84th Street
Newton, Kansas 67114+8827

ATTN: Ryan Seib

Eggers-Horchem #1

28/19S/25W/Ness

Start Date: 2012.09.06 @ 10:05:00

End Date: 2012.09.06 @ 17:10:00

Job Ticket #: 17826 DST #: 1

Superior Testers Enterprises LLC
PO Box 138 Great Bend KS 67530
1-800-792-6902

Printed: 2012.09.06 @ 17:22:43



DRILL STEM TEST REPORT

Palomino Petroleum Incorporated
 4924 Southeast 84th Street
 New ton, Kansas 67114+8827
 ATTN: Ryan Seib

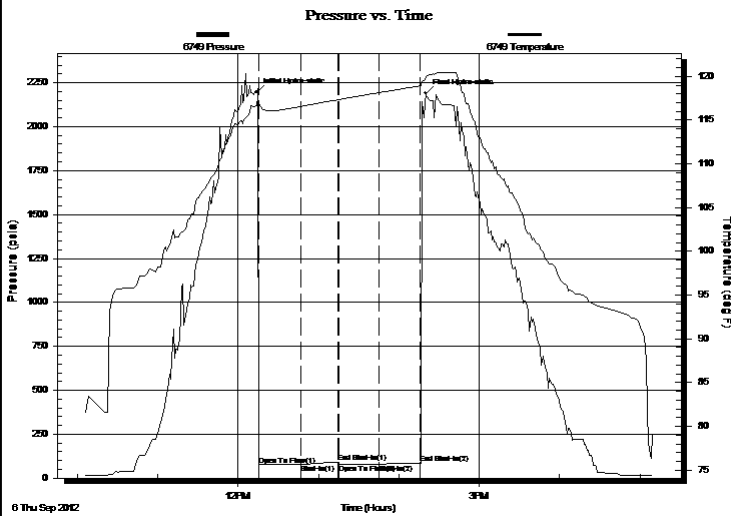
28/19S/25W/Ness
Eggers-Horchem #1
 Job Ticket: 17826 **DST#: 1**
 Test Start: 2012.09.06 @ 10:05:00

GENERAL INFORMATION:

Formation: **Marmaton**
 Deviated: No Whipstock: ft (KB)
 Test Type: Conventional Bottom Hole (Initial)
 Time Tool Opened: 12:15:30 Tester: Ken Swinney
 Time Test Ended: 17:10:00 Unit No: 3325 Scott City/110
 Interval: **4270.00 ft (KB) To 4360.00 ft (KB) (TVD)** Reference Elevations: 2507.00 ft (KB)
 Total Depth: 4360.00 ft (KB) (TVD) 2495.00 ft (CF)
 Hole Diameter: 7.88 inches Hole Condition: Fair KB to GR/CF: 12.00 ft

Serial #: 6749 Inside
 Press @ Run Depth: 80.84 psia @ 4355.90 ft (KB) Capacity: 5000.00 psia
 Start Date: 2012.09.06 End Date: 2012.09.06 Last Calib.: 2012.09.06
 Start Time: 10:05:00 End Time: 17:10:00 Time On Btm: 2012.09.06 @ 12:13:30
 Time Off Btm: 2012.09.06 @ 14:20:00

TEST COMMENT: 1ST Open 30 Minutes/Weak blow/Surface blow did not build/Blow died in 15 minutes
 1ST Shut In 30 Minutes/No blow back
 2ND Open 30 Minutes/Dead/No blow
 2ND Shut In 30 Minutes/No blow back



PRESSURE SUMMARY

Time (Min.)	Pressure (psia)	Temp (deg F)	Annotation
0	2194.64	116.71	Initial Hydro-static
2	75.26	116.94	Open To Flow (1)
34	77.80	116.57	Shut-In(1)
61	92.03	117.34	End Shut-In(1)
62	80.30	117.35	Open To Flow (2)
92	80.84	118.14	Shut-In(2)
123	86.51	118.90	End Shut-In(2)
127	2189.81	119.88	Final Hydro-static

Recovery

Length (ft)	Description	Volume (bbl)
5.00	Lightly oil spotted mud	0.02
0.00	Oil 1% Mud 99%	0.00

Gas Rates

Choke (inches)	Pressure (psia)	Gas Rate (Mcf/d)



DRILL STEM TEST REPORT

Palomino Petroleum Incorporated
 4924 Southeast 84th Street
 New ton, Kansas 67114+8827
 ATTN: Ryan Seib

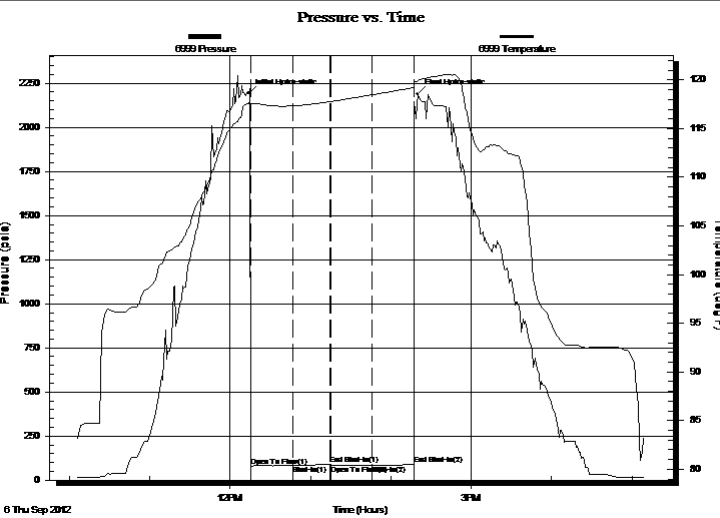
28/19S/25W/Ness
Eggers-Horchem #1
 Job Ticket: 17826 **DST#: 1**
 Test Start: 2012.09.06 @ 10:05:00

GENERAL INFORMATION:

Formation: **Marmaton**
 Deviated: No Whipstock: ft (KB)
 Test Type: Conventional Bottom Hole (Initial)
 Time Tool Opened: 12:15:30 Tester: Ken Swinney
 Time Test Ended: 17:10:00 Unit No: 3325 Scott City/110
 Interval: **4270.00 ft (KB) To 4360.00 ft (KB) (TVD)** Reference Elevations: 2507.00 ft (KB)
 Total Depth: 4360.00 ft (KB) (TVD) 2495.00 ft (CF)
 Hole Diameter: 7.88 inches Hole Condition: Fair KB to GR/CF: 12.00 ft

Serial #: 6999 Outside
 Press @ Run Depth: 87.11 psia @ 4356.90 ft (KB) Capacity: 5000.00 psia
 Start Date: 2012.09.06 End Date: 2012.09.06 Last Calib.: 2012.09.06
 Start Time: 10:05:00 End Time: 17:10:00 Time On Btm: 2012.09.06 @ 12:13:30
 Time Off Btm: 2012.09.06 @ 14:20:00

TEST COMMENT: 1ST Open 30 Minutes/Weak blow/Surface blow did not build/Blow died in 15 minutes
 1ST Shut In 30 Minutes/No blow back
 2ND Open 30 Minutes/Dead/No blow
 2ND Shut In 30 Minutes/No blow back



PRESSURE SUMMARY			
Time (Min.)	Pressure (psia)	Temp (deg F)	Annotation
0	2193.24	117.61	Initial Hydro-static
2	80.27	117.47	Open To Flow (1)
34	82.41	117.34	Shut-In(1)
61	89.86	117.78	End Shut-In(1)
62	85.05	117.79	Open To Flow (2)
93	85.00	118.48	Shut-In(2)
124	87.11	119.20	End Shut-In(2)
127	2189.94	119.96	Final Hydro-static

Recovery		
Length (ft)	Description	Volume (bbl)
5.00	Lightly oil spotted mud	0.02
0.00	Oil 1% Mud 99%	0.00

Gas Rates			
	Choke (inches)	Pressure (psia)	Gas Rate (Mcf/d)



DRILL STEM TEST REPORT

TOOL DIAGRAM

Palomino Petroleum Incorporated

28/19S/25W/Ness

4924 Southeast 84th Street
New ton, Kansas 67114+8827

Eggers-Horchem #1

Job Ticket: 17826

DST#: 1

ATTN: Ryan Seib

Test Start: 2012.09.06 @ 10:05:00

Tool Information

Drill Pipe:	Length: 3963.00 ft	Diameter: 3.80 inches	Volume: 55.59 bbl	Tool Weight: 2000.00 lb
Heavy Wt. Pipe:	Length: 0.00 ft	Diameter: 0.00 inches	Volume: 0.00 bbl	Weight set on Packer: 20000.00 lb
Drill Collar:	Length: 300.00 ft	Diameter: 2.25 inches	Volume: 1.48 bbl	Weight to Pull Loose: 90000.00 lb
			<u>Total Volume: 57.07 bbl</u>	Tool Chased 0.00 ft
Drill Pipe Above KB:	20.00 ft			String Weight: Initial 65000.00 lb
Depth to Top Packer:	4270.00 ft			Final 65000.00 lb
Depth to Bottom Packer:	ft			
Interval between Packers:	89.90 ft			
Tool Length:	116.90 ft			
Number of Packers:	2	Diameter: 6.75 inches		

Tool Comments:

Tool Description	Length (ft)	Serial No.	Position	Depth (ft)	Accum. Lengths
------------------	-------------	------------	----------	------------	----------------

Shut In Tool	5.00			4248.00	
Hydraulic Tool	5.00			4253.00	
Jars	5.00			4258.00	
Safety Joint	2.00			4260.00	
Packer	5.00			4265.00	27.00 Bottom Of Top Packer
Packer	5.00			4270.00	
Perforations	5.00			4275.00	
Change Over Sub	0.75			4275.75	
Drill Pipe	63.40			4339.15	
Change Over Sub	0.75			4339.90	
Anchor	15.00			4354.90	
Recorder	1.00	6749	Inside	4355.90	
Recorder	1.00	6999	Outside	4356.90	
Bullnose	3.00			4359.90	89.90 Bottom Packers & Anchor

Total Tool Length: 116.90



DRILL STEM TEST REPORT

FLUID SUMMARY

Palomino Petroleum Incorporated

28/19S/25W/Ness

4924 Southeast 84th Street
New ton, Kansas 67114+8827

Eggers-Horchem #1

Job Ticket: 17826

DST#: 1

ATTN: Ryan Seib

Test Start: 2012.09.06 @ 10:05:00

Mud and Cushion Information

Mud Type: Gel Chem
Mud Weight: 10.00 lb/gal
Viscosity: 58.00 sec/qt
Water Loss: 7.50 in³
Resistivity: ohm.m
Salinity: 2800.00 ppm
Filter Cake: 1.00 inches

Cushion Type:
Cushion Length: ft
Cushion Volume: bbl
Gas Cushion Type:
Gas Cushion Pressure: psia

Oil API: deg API
Water Salinity: ppm

Recovery Information

Recovery Table

Length ft	Description	Volume bbl
5.00	Lightly oil spotted mud	0.025
0.00	Oil 1% Mud 99%	0.000

Total Length: 5.00 ft Total Volume: 0.025 bbl

Num Fluid Samples: 0

Num Gas Bombs: 0

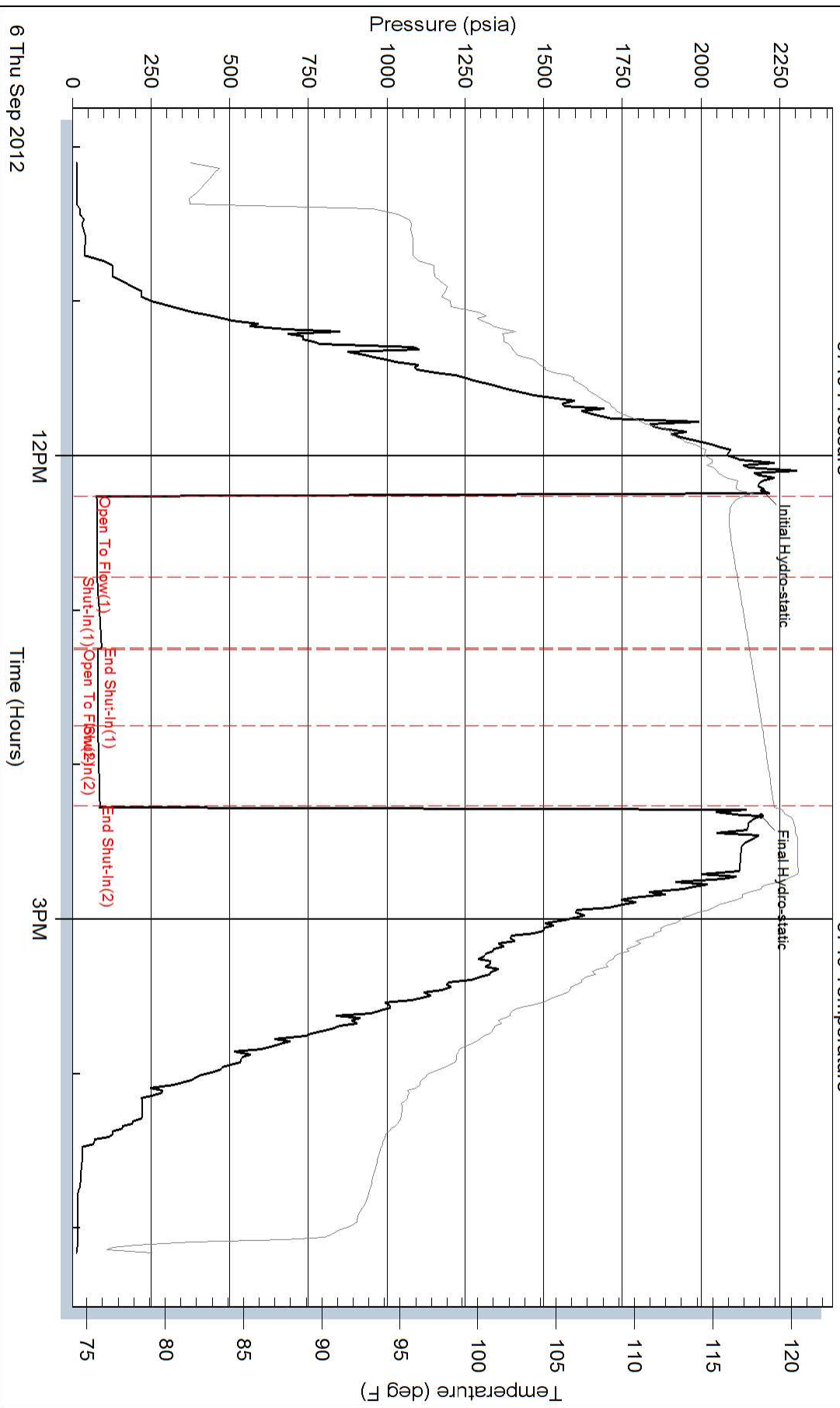
Serial #:

Laboratory Name:

Laboratory Location:

Recovery Comments:

Pressure vs. Time



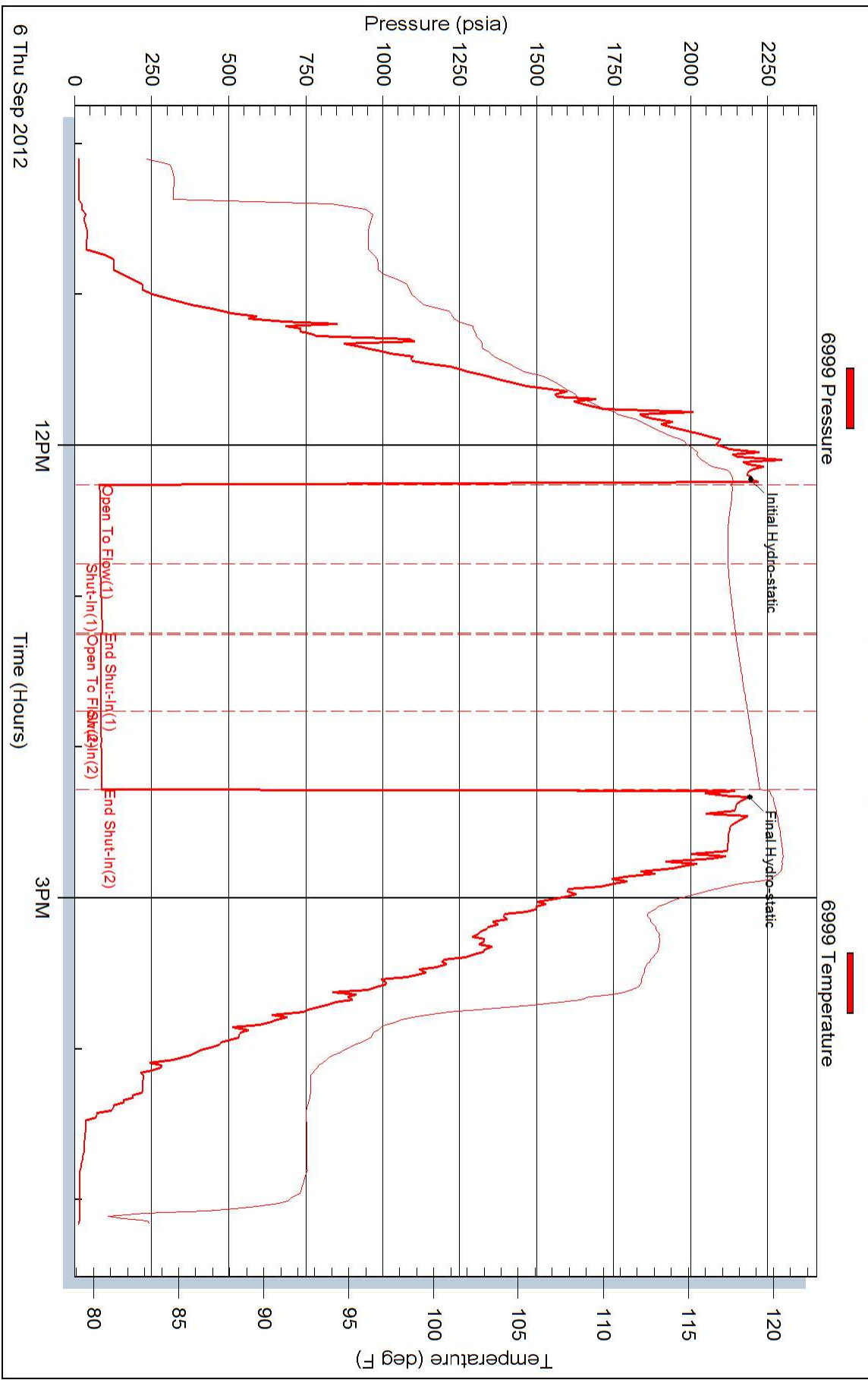
Serial #: 6999

Outside Palomino Petroleum Incorporated

Eggers-Horchem #1

DST Test Number: 1

Pressure vs. Time



Superior Testers Enterprises LLC

Ref. No: 17826

Printed: 2012.09.06 @ 17:22:44