

KEVIN L. KESSLER
CONSULTING PETROLEUM GEOLOGIST
 (316) 522-7338

OPERATOR : MULL DRILLING COMPANY INC.
LEASE :SMITH-RUFENACHT UNITWELL # : 1 - 11
LOCATION : 2561' FSL & 647' FEL
SEC: 11 TWP : 17 S RGE : 24 W
COUNTY : NESS STATE : KANSAS

ELEVATION
KB : 2481
GL : 2476
 MEASUREMENTS FROM
KB

CONTRACTOR : WW DRILLING RIG # 10
 COMM : 07 / 16 / 2012 COMP : 07 / 25 / 2012
 RTD : 4550 LOG TD : 4548
 SAMPLES SAVED FROM : 3700 TO : RTD
 GEOLOGICAL SUPERVISION FROM : 3700 TO : RTD
 MUD UP : 3600 TYPE MUD : CHEMICAL

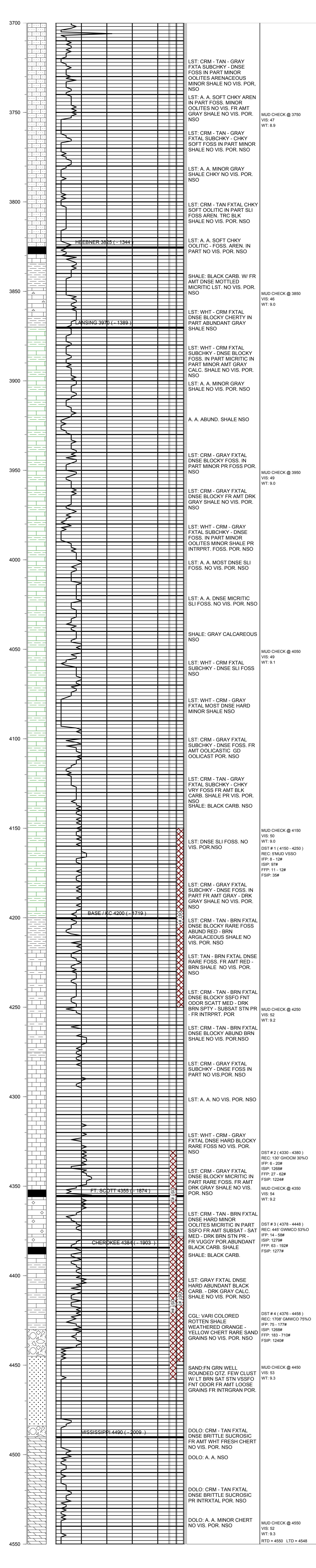
CASING RECORD
 SURFACE :
 8 5/8" @ 234'
 PRODUCTION :
 5 1/2" @ 4550'

ELECTRICAL SURVEYS:
 DIL
 CNL / CDL
 MICRO
 SONIC

| FORMATION | TOP | LOG | DATUM | TOP | SAMPLE | DATUM | STRUCT. COMP. |
|-------------|------|-----|--------|------|--------|--------|---------------|
| HEEBNER | 3830 | | - 1349 | 3825 | | - 1344 | FLAT |
| LANSING | 3870 | | - 1389 | 3870 | | - 1389 | + 02 |
| BASE/KC | 4200 | | - 1719 | 4200 | | - 1719 | + 06 |
| FORT SCOTT | 4361 | | - 1880 | 4355 | | - 1874 | + 03 |
| CHEROKEE | 4384 | | - 1903 | 4384 | | - 1903 | + 04 |
| MISSISSIPPI | 4490 | | - 2009 | 4490 | | - 2009 | - 07 |

REFERENCE WELL FOR STRUCTURAL COMPARISON :

R & W OIL # 1 YOST SEC 11 - T 17 S - R 24 W NESS COUNTY KANSAS



COMMENTS:

5 1/2" PRODUCTION CASING WAS SET TO FURTHER EVALUATE
 THE PRODUCTIVITY OF THIS WELL

KEVIN L. KESSLER