

# WHITEHALL EXPLORATION

87 De France Way • Golden, Colorado • (303) 279-6894

## GEOLOGIST'S REPORT DRILLING TIME AND SAMPLE LOG

OPERATOR CORAL PRODUCTION CORP  
 LEASE COTTONWOOD WELL NO. 30-1  
 FIELD WG  
 LOCATION 2,620' FNL ± 150' FWL  
 SEC. 30 TWP. 6S RGE. 19 W  
 COUNTY ROOKS STATE KS

CONTRACTOR DISCOVERY DRILLING - RIG NO. 1  
 COMM: SEPT. 28, 2012 COMP: OCT. 5, 2012  
 RTD 3,658' (-1,573) LOG TO NA - NO LOG RUN  
 SAMPLES SAVED FROM 3,050' TO 3,658' RTD  
 DRILLING TIME KEPT FROM 3,025' TO 3,658' RTD  
 SAMPLES EXAMINED FROM 3,050' TO 3,658' RTD  
 GEOLOGICAL SUPERVISION FROM 3,050' TO 3,658' RTD  
 MUD UP 2,564' TYPE MUD CHEMICAL  
 WELL SITE GEOLOGIST RICHARD J. HALL - CP6 5820

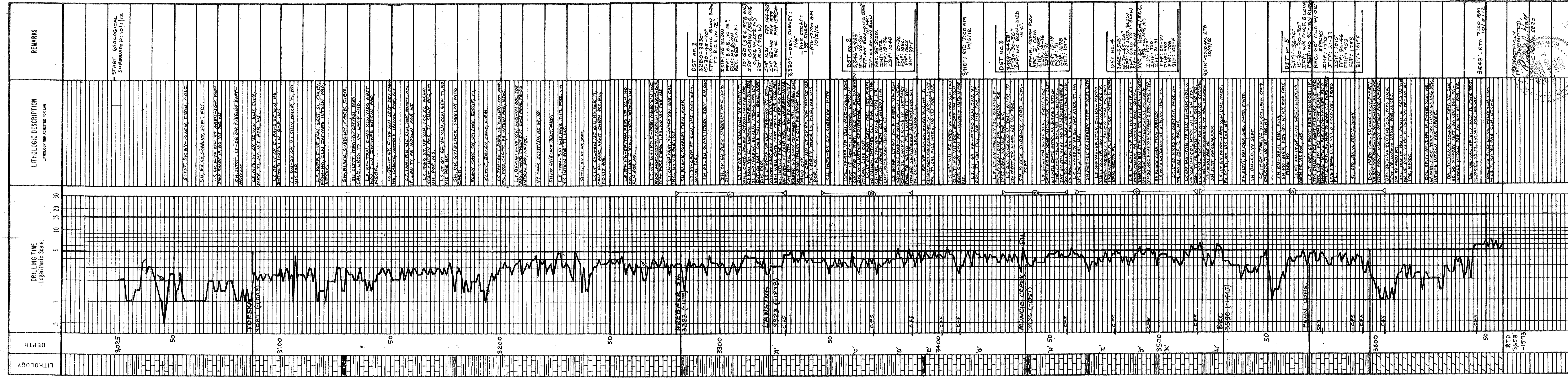
ELEVATION 2,085'  
 KB 2,085'  
 DF 2,077'  
 GL 2,077'  
 Measurements Are All From KB

CASING RECORD  
 SURFACE 8 5/8" @ 233'  
 PRODUCTION NONE

ELECTRICAL SURVEYS  
 NONE

FORMATION	LOG TOP	LOG DATUM	SAMPLE TOP	SAMPLE DATUM	STRUCT. COMP.
--NO LOG RUN--					
S.C. ANHYDRITE	NA	1659	+426	-17	
TOPEKA	NA	3087	-1002	-6	
HEBNER SH.	NA	3283	-1198	-2	
LANSING	NA	3323	-1238	-5	
'H' ZONE	NA	3448	-1363	+1	
BKC	NA	3530	-1445	FLAT	
ARBUCKLE	NA	3597	-1512	+10	

REFERENCE WELL FOR STRUCTURAL COMPARISON ABERCROMBIE DRILLING - FISCHLI #1  
 NW-NW-SE - SEC. 25 - T6S - R20W, ROOKS CO., KS KB 2099'



3658' - RTD 7:00 AM  
 10/5/12  
 RICHARD J. HALL  
 CP6 5820