



## DRILL STEM TEST REPORT

Prepared For: **FG Holl Company LLC**

9431 East Central  
Suite 100  
Wichita, Kansas 67206+2563

ATTN: Frank Greenbaum

### **Cantrell Unit #1-26**

### **26/17S/15W/Barton**

Start Date: 2012.09.20 @ 08:05:00

End Date: 2012.09.20 @ 14:50:30

Job Ticket #: 17833                      DST #: 1

Superior Testers Enterprises LLC  
PO Box 138 Great Bend KS 67530  
1-800-792-6902

Printed: 2012.09.20 @ 15:07:39

FG Holl Company LLC

26/17S/15W/Barton

Cantrell Unit #1-26

DST # 1

Lansing/Kansas City

2012.09.20



# DRILL STEM TEST REPORT

FG Holl Company LLC  
 9431 East Central  
 Suite 100  
 Wichita, Kansas 67206+2563  
 ATTN: Frank Greenbaum

**26/17S/15W/Barton**

**Cantrell Unit #1-26**

Job Ticket: 17833      **DST#: 1**  
 Test Start: 2012.09.20 @ 08:05:00

## GENERAL INFORMATION:

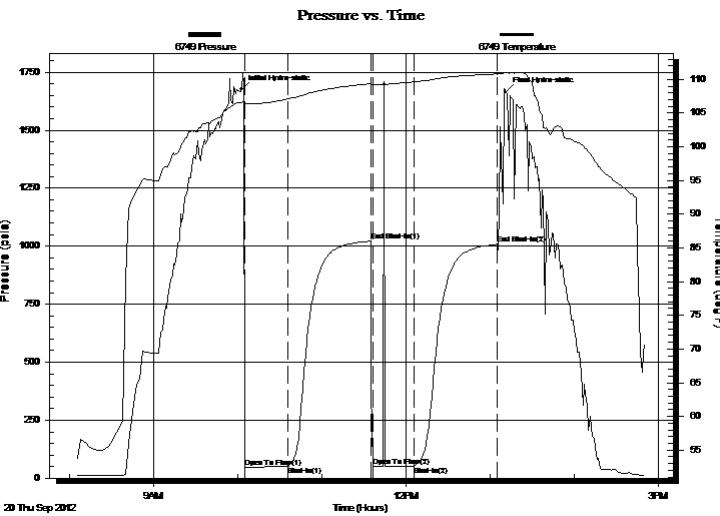
Formation: **Lansing/Kansas City**  
 Deviated: No Whipstock:      ft (KB)  
 Time Tool Opened: 10:05:30  
 Time Test Ended: 14:50:30  
 Interval: **3360.00 ft (KB) To 3394.00 ft (KB) (TVD)**  
 Total Depth: 3394.00 ft (KB) (TVD)  
 Hole Diameter: 7.80 inches Hole Condition: Fair  
 Test Type: Conventional Bottom Hole (Initial)  
 Tester: Ken Swinney  
 Unit No: 3325 Great Bend/40  
 Reference Elevations: 2023.00 ft (KB)  
 2012.00 ft (CF)  
 KB to GR/CF: 11.00 ft

## Serial #: 6749

Inside

Press @ RunDepth: 51.42 psia @ 3390.00 ft (KB)      Capacity: 5000.00 psia  
 Start Date: 2012.09.20      End Date: 2012.09.20      Last Calib.: 2012.09.20  
 Start Time: 08:05:00      End Time: 14:50:30      Time On Btm: 2012.09.20 @ 10:03:00  
 Time Off Btm: 2012.09.20 @ 13:11:30

TEST COMMENT: 1ST Open 30 Minutes/Slide 5 foot/Weak blow/Blow built to 1 inch in bucket of water  
 1ST Shut In 60 Minutes/No blow back  
 2ND Open 30 Minutes/Dead/No blow/Flush tool didnt help  
 2ND Shut In 60 Minutes/No blow back



## PRESSURE SUMMARY

Time (Min.)	Pressure (psia)	Temp (deg F)	Annotation
0	1676.55	106.57	Initial Hydro-static
3	46.73	106.29	Open To Flow (1)
33	49.86	107.11	Shut-In(1)
92	1021.63	109.38	End Shut-In(1)
94	50.28	109.17	Open To Flow (2)
123	51.42	109.64	Shut-In(2)
182	1008.08	110.81	End Shut-In(2)
189	1664.52	111.01	Final Hydro-static

## Recovery

Length (ft)	Description	Volume (bbl)
15.00	Mud 100%	0.21

## Gas Rates

Choke (inches)	Pressure (psia)	Gas Rate (Mcf/d)





# DRILL STEM TEST REPORT

**TOOL DIAGRAM**

FG Holl Company LLC

**26/17S/15W/Barton**

9431 East Central  
Suite 100  
Wichita, Kansas 67206+2563  
ATTN: Frank Greenbaum

**Cantrell Unit #1-26**

Job Ticket: 17833

**DST#: 1**

Test Start: 2012.09.20 @ 08:05:00

## Tool Information

Drill Pipe:	Length: 3341.00 ft	Diameter: 3.80 inches	Volume: 46.87 bbl	Tool Weight:	2000.00 lb
Heavy Wt. Pipe:	Length: 0.00 ft	Diameter: 0.00 inches	Volume: 0.00 bbl	Weight set on Packer:	20000.00 lb
Drill Collar:	Length: 0.00 ft	Diameter: 0.00 inches	Volume: 0.00 bbl	Weight to Pull Loose:	85000.00 lb
			<u>Total Volume: 46.87 bbl</u>	Tool Chased	5.00 ft
Drill Pipe Above KB:	8.00 ft			String Weight: Initial	45000.00 lb
Depth to Top Packer:	3360.00 ft			Final	45000.00 lb
Depth to Bottom Packer:	ft				
Interval between Packers:	34.00 ft				
Tool Length:	61.00 ft				
Number of Packers:	2	Diameter: 6.75 inches			

Tool Comments:

Tool Description	Length (ft)	Serial No.	Position	Depth (ft)	Accum. Lengths
Shut In Tool	5.00			3338.00	
Hydraulic Tool	5.00			3343.00	
Jars	5.00			3348.00	
Safety Joint	2.00			3350.00	
Packer	5.00			3355.00	27.00 Bottom Of Top Packer
Packer	5.00			3360.00	
Anchor	29.00			3389.00	
Recorder	1.00	6749	Inside	3390.00	
Recorder	1.00	6651	Outside	3391.00	
Bullnose	3.00			3394.00	34.00 Bottom Packers & Anchor
<b>Total Tool Length:</b>	<b>61.00</b>				



# DRILL STEM TEST REPORT

## FLUID SUMMARY

FG Holl Company LLC

**26/17S/15W/Barton**

9431 East Central  
Suite 100  
Wichita, Kansas 67206+2563  
ATTN: Frank Greenbaum

**Cantrell Unit #1-26**

Job Ticket: 17833

**DST#: 1**

Test Start: 2012.09.20 @ 08:05:00

### Mud and Cushion Information

Mud Type: Gel Chem  
Mud Weight: 9.00 lb/gal  
Viscosity: 49.00 sec/qt  
Water Loss: 8.80 in<sup>3</sup>  
Resistivity: ohm.m  
Salinity: 4500.00 ppm  
Filter Cake: 1.00 inches

Cushion Type:  
Cushion Length: ft  
Cushion Volume: bbl  
Gas Cushion Type:  
Gas Cushion Pressure: psia

Oil API: deg API  
Water Salinity: ppm

### Recovery Information

Recovery Table

Length ft	Description	Volume bbl
15.00	Mud 100%	0.210

Total Length: 15.00 ft      Total Volume: 0.210 bbl

Num Fluid Samples: 0

Num Gas Bombs: 0

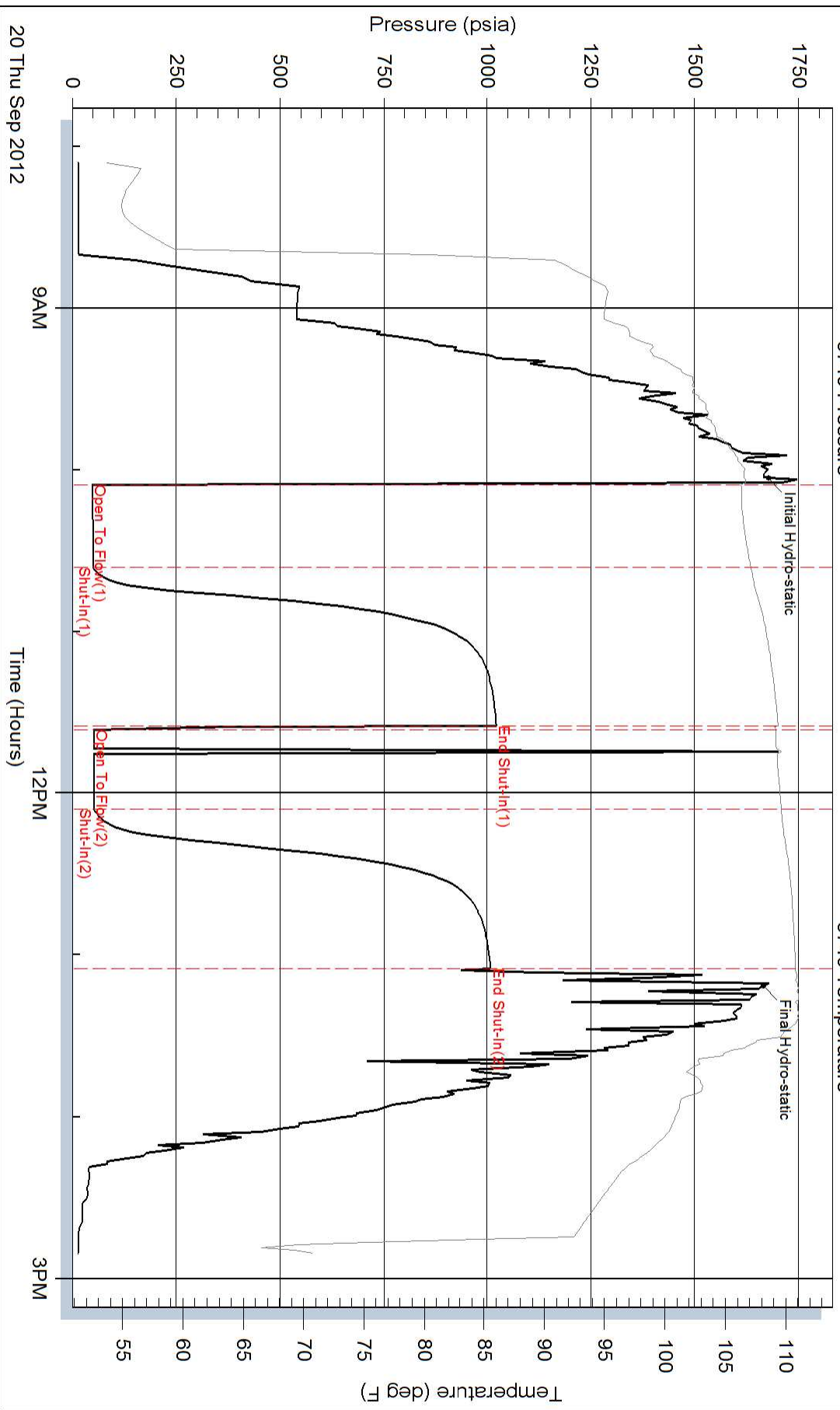
Serial #:

Laboratory Name:

Laboratory Location:

Recovery Comments:

### Pressure vs. Time



### Pressure vs. Time

