

# BHCRHODES

CIVIL ENGINEERS • SURVEYORS  
 901 N. 8th Street, Suite 100 Kansas City, KS 66101 \* p. (913) 371-5300 \* f. (913) 371-2677  
 BHC RHODES is a trademark of Brungardt Honomichi & Company, P.A.

FINNEY County, Kansas 200' FSL & 660' FEL Section 26 Township 22S Range 31W P.M.



BOTTOM HOLE INFORMATION PROVIDED BY OPERATOR LISTED, NOT SURVEYED. CORNER COORDINATES ARE TAKEN FROM POINTS SURVEYED IN THE FIELD.

Distances shown in (parenthesis) are calculated based upon the Quarter. Section being 2640 feet, those shown in [brackets] are based on GLO (General Land Office) distances and have NOT been measured on the ground.

**ELEVATION:**  
2882'

Operator: SandRidge Exploration and Production, LLC.

Lease Name: Faldtz 2231

Well No: 1-26H

Topography & Vegetation: Agricultural dry land farm ground

Reference Stakes or Alternate Location

Good Drill Site? Yes Stakes Set: \_\_\_\_\_

Best Accessibility to Location: From South and West by paved and gravel roads.

Distance & Direction from Hwy Jct or Town: From Garden City, Northeast on KS HWY 156 ±11.3 mi., then left (North) on Mennonite Rd (Co. Rd. 25) ±3 mi., then left (West) on Rock Pitt Road (Co. Rd. AA) ±1.14 mi., Site is on right (North) side.

DATUM: NAD 27  
 LAT: 38.104871329  
 LONG: 100.684435316  
 LAT: 38° 06' 17.54"  
 LONG: 100° 41' 03.97"  
 STATE PLANE  
 COORDINATES: (U.S. FEET)  
 ZONE: SOUTH 1502 KS  
 X: 1371501.269  
 Y: 531036.847

Date of Drawing: 2012-08-22 Date Staked: 2012-08-21

### CERTIFICATE:

I, Michael D. Klein a Kansas License Land surveyor and a authorized agent of BHC Rhodes, do hereby certify that the above described well location was surveyed and staked on the ground as shown herein.

Kansas Lic. No. 778

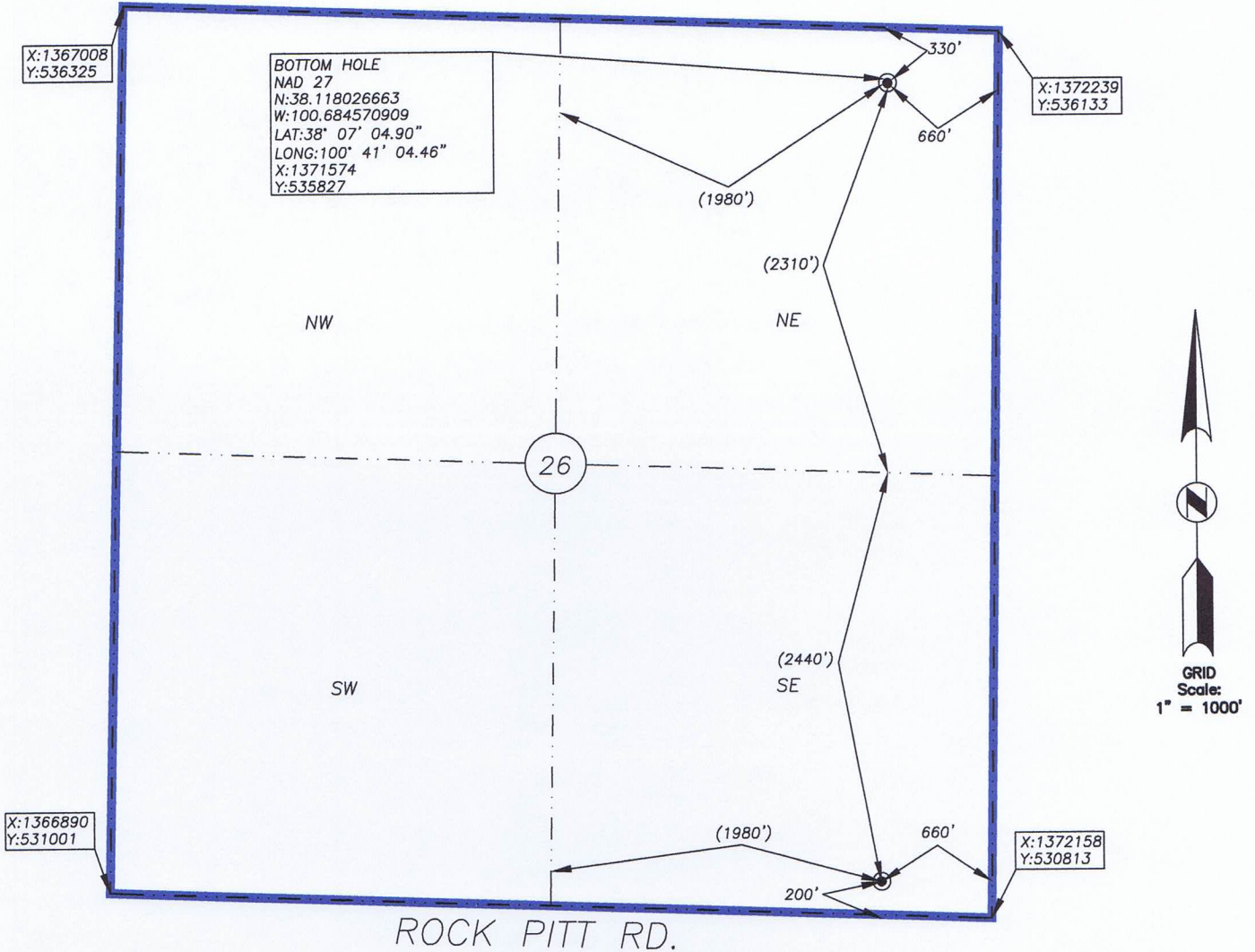
Invoice No.: \_\_\_\_\_  
 BHC Rhodes Job No.: 016330.00.34  
 Field: MK Office: MSE



# BHC RHODES

CIVIL ENGINEERS \* SURVEYORS  
 901 N. 8th Street, Suite 100 Kansas City, KS 66101 \* p. (913) 371-5300 \* f. (913) 371-2677  
 BHC RHODES is a trademark of Brungardt Honomichl & Company, P.A.

FINNEY County, Kansas 200' FSL & 660' FEL Section 26 Township 22S Range 31W P.M.



BOTTOM HOLE INFORMATION PROVIDED BY OPERATOR LISTED, NOT SURVEYED. CORNER COORDINATES ARE TAKEN FROM POINTS SURVEYED IN THE FIELD.

Distances shown in (parenthesis) are calculated based upon the Quarter. Section being 2640 feet, those shown in [brackets] are based on GLO (General Land Office) distances and have **NOT** been measured on the ground.

**ELEVATION:**  
2882'

Operator: SandRidge Exploration and Production, LLC.  
 Lease Name: Faldtz 2231 Well No: 1-26H  
 Topography & Vegetation: Agricultural dry land farm ground  
 Reference Stakes or Alternate Location

Good Drill Site? Yes Stakes Set: \_\_\_\_\_  
 Best Accessibility to Location: From South and West by paved and gravel roads.  
 Distance & Direction from Hwy Jct or Town: From Garden City, Northeast on KS HWY 156 ±11.3 mi., then left (North) on Mennonite Rd (Co. Rd. 25) ±3 mi., then left (West) on Rock Pitt Road (Co. Rd. AA) ±1.14 mi., Site is on right (North) side.

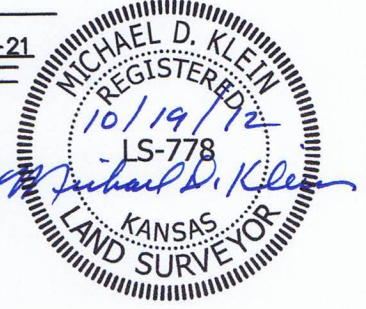
Invoice No.: \_\_\_\_\_  
 BHC Rhodes Job No.: 016330.00.34  
 Field: MK Office: MSE  
 DATUM: NAD 27  
 LAT: 38.104871329  
 LONG: 100.684435316  
 LAT: 38° 06' 17.54"  
 LONG: 100° 41' 03.97"  
 STATE PLANE  
 COORDINATES: (U.S. FEET)  
 ZONE: SOUTH 1502 KS  
 X: 1371501.269  
 Y: 531036.847

Date of Drawing: 2012-08-22 Date Staked: 2012-08-21

### CERTIFICATE:

I, Michael D. Klein a Kansas License Land surveyor and a authorized agent of BHC Rhodes, do hereby certify that the above described well location was surveyed and staked on the ground as shown herein.

Kansas Lic. No. 778

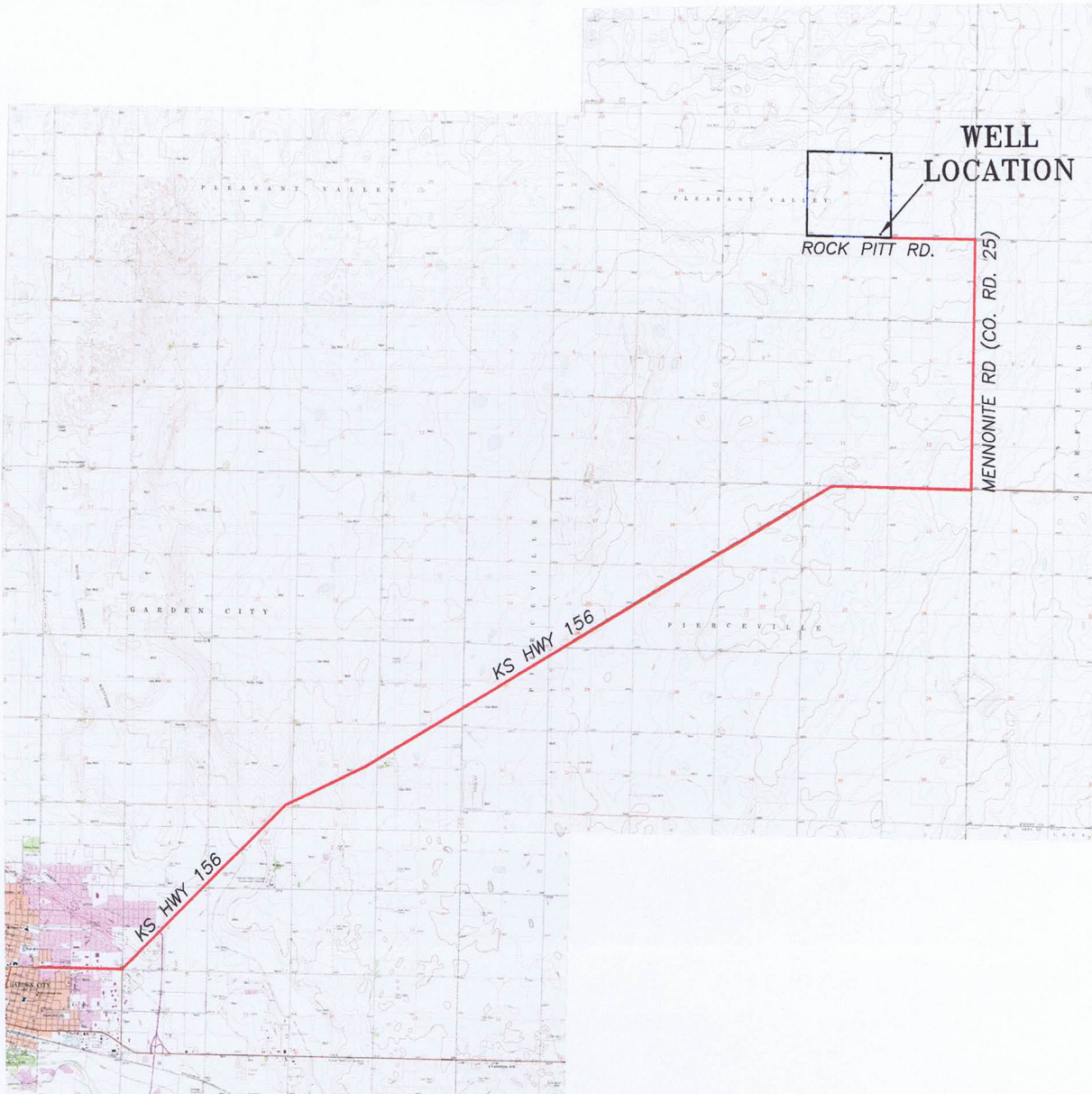


# **BHC RHODES**

CIVIL ENGINEERS • SURVEYORS

901 N. 8th Street, Suite 100 Kansas City, KS 66101  
p. (913) 371-5300 f. (913) 371-2677  
BHC RHODES is a trademark of Brungardt Honomichl & Company, P.A.

## VICINITY MAP



Scale: 1" = 2 Miles

Sec. 26 Twp. 22 Rng. 31

County FINNEY State KS

Operator SandRidge Exploration and Production, LLC.

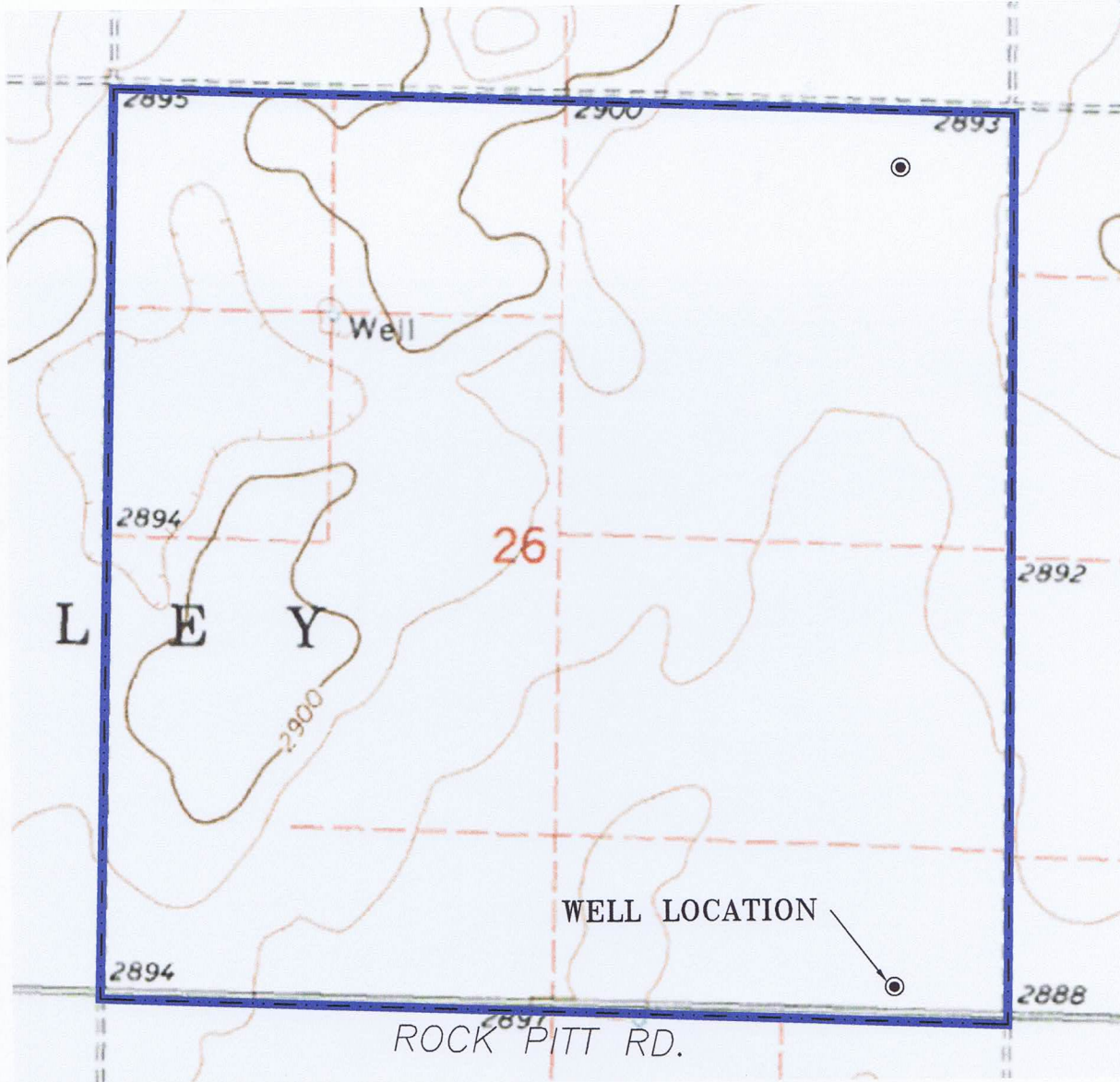
**BHC RHODES**  
CIVIL ENGINEERS • SURVEYORS

# BHCRHODES

CIVIL ENGINEERS • SURVEYORS

901 N. 8th Street, Suite 100 Kansas City, KS 66101  
p. (913) 371-5300 f. (913) 371-2677  
BHCRHODES is a trademark of Brungardt Honomichi & Company, P.A.

## LOCATION & ELEVATION VERIFICATION MAP



Sec. 26 Twp. 22 Rng. 31

County: FINNEY State: KANSAS

Operator: SandRidge Exploration and Production, LLC.

Description: 200' FSL & 660' FEL

Lease: FALDTZ 2231 1-26H

Elevation: 2882'

U.S.G.S. Topographic  
Quadrangle Map: NORTH OF PIERCEVILLE

Above Background Data from  
U.S.G.S. Topographic Map  
Scale: 1" = 1000'

Contour Interval 5'

This location has been very carefully staked on the ground according to the best official survey records, maps, and photographs available to us, but its accuracy is not guaranteed. When elevation is shown hereon it is the ground elevation of the location stake. Review this plat and inform us immediately of any possible discrepancy.

**BHCRHODES**  
CIVIL ENGINEERS • SURVEYORS

AUGUST 22, 2012