



DRILL STEM TEST REPORT

Prepared For: **Palomino Petroleum Inc.**

4924 SE 84th St.
Newton, KS 67114

ATTN: Ryan Seib

Valentine #1

7-15s-25w Trego,KS

Start Date: 2012.09.17 @ 03:45:00

End Date: 2012.09.17 @ 10:24:09

Job Ticket #: 48451 DST #: 1

Trilobite Testing, Inc
PO Box 362 Hays, KS 67601
ph: 785-625-4778 fax: 785-625-5620

Printed: 2012.09.24 @ 15:52:08



**TRILOBITE
TESTING, INC**

DRILL STEM TEST REPORT

Palomino Petroleum Inc.

7-15s-25w Trego,KS

4924 SE 84th St.
New ton, KS 67114

Valentine #1

Job Ticket: 48451

DST#: 1

ATTN: Ryan Seib

Test Start: 2012.09.17 @ 03:45:00

GENERAL INFORMATION:

Formation: **Lansing**

Deviated: No Whipstock: ft (KB)

Time Tool Opened: 06:25:40

Time Test Ended: 10:24:09

Test Type: Conventional Bottom Hole (Initial)

Tester: Chuck Smith

Unit No: 62

Interval: 3810.00 ft (KB) To 3880.00 ft (KB) (TVD)

Reference Elevations: 2364.00 ft (KB)

Total Depth: 3880.00 ft (KB) (TVD)

2354.00 ft (CF)

Hole Diameter: 7.88 inches Hole Condition: Good

KB to GR/CF: 10.00 ft

Serial #: 8018 Inside

Press @ RunDepth: 75.37 psig @ 3814.00 ft (KB)

Capacity: 8000.00 psig

Start Date: 2012.09.17

End Date:

2012.09.17

Last Calib.: 2012.09.17

Start Time: 04:24:01

End Time:

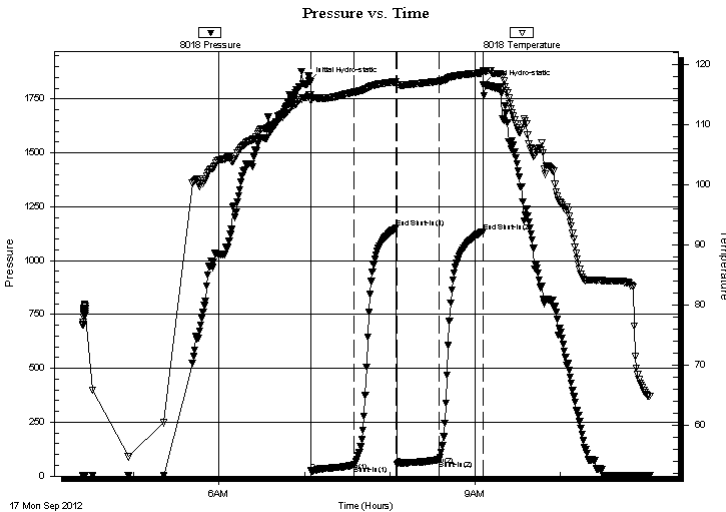
11:03:10

Time On Btm: 2012.09.17 @ 07:03:10

Time Off Btm: 2012.09.17 @ 09:05:39

TEST COMMENT: B.O.B. @ 27 min.
No return.
B.O.B. @ 10 min.
Weak surface return.

PRESSURE SUMMARY



Time (Min.)	Pressure (psig)	Temp (deg F)	Annotation
0	1832.08	114.98	Initial Hydro-static
2	23.81	113.97	Open To Flow (1)
32	49.88	115.44	Shut-In(1)
62	1151.63	117.20	End Shut-In(1)
62	51.89	116.75	Open To Flow (2)
92	75.37	117.28	Shut-In(2)
123	1134.14	118.68	End Shut-In(2)
123	1816.21	118.85	Final Hydro-static

Recovery

Length (ft)	Description	Volume (bbl)
120.00	GOCM 10g 25o 65m	1.68
5.00	OCM 45o 55m	0.07

Gas Rates

Choke (inches)	Pressure (psig)	Gas Rate (Mcf/d)



**TRILOBITE
TESTING, INC**

DRILL STEM TEST REPORT

TOOL DIAGRAM

Palomino Petroleum Inc.

7-15s-25w Trego,KS

4924 SE 84th St.
New ton, KS 67114

Valentine #1

Job Ticket: 48451

DST#: 1

ATTN: Ryan Seib

Test Start: 2012.09.17 @ 03:45:00

Tool Information

Drill Pipe:	Length: 3795.00 ft	Diameter: 3.80 inches	Volume: 53.23 bbl	Tool Weight: 2300.00 lb
Heavy Wt. Pipe:	Length: 0.00 ft	Diameter: inches	Volume: 0.00 bbl	Weight set on Packer: 22000.00 lb
Drill Collar:	Length: 0.00 ft	Diameter: 2.25 inches	Volume: 0.00 bbl	Weight to Pull Loose: 85000.00 lb
			<u>Total Volume: 53.23 bbl</u>	Tool Chased 0.00 ft
Drill Pipe Above KB:	12.50 ft			String Weight: Initial 68000.00 lb
Depth to Top Packer:	3810.00 ft			Final 69000.00 lb
Depth to Bottom Packer:	ft			
Interval between Packers:	70.00 ft			
Tool Length:	97.50 ft			
Number of Packers:	2	Diameter: 6.75 inches		

Tool Comments:

Tool Description

Length (ft) Serial No. Position Depth (ft) Accum. Lengths

Tool Description	Length (ft)	Serial No.	Position	Depth (ft)	Accum. Lengths
Change Over Sub	1.00			3783.50	
Shut In Tool	5.00			3788.50	
Hydraulic tool	5.00			3793.50	
Jars	5.00			3798.50	
Safety Joint	2.50			3801.00	
Packer	5.00			3806.00	27.50 Bottom Of Top Packer
Packer	4.00			3810.00	
Stubb	1.00			3811.00	
Perforations	3.00			3814.00	
Recorder	0.00	8018	Inside	3814.00	
Recorder	0.00	6751	Outside	3814.00	
Perforations	0.00			3814.00	
Change Over Sub	1.00			3815.00	
Drill Pipe	61.00			3876.00	
Change Over Sub	1.00			3877.00	
Bullnose	3.00			3880.00	70.00 Bottom Packers & Anchor
Total Tool Length:	97.50				



**TRILOBITE
TESTING, INC**

DRILL STEM TEST REPORT

FLUID SUMMARY

Palomino Petroleum Inc.

7-15s-25w Trego,KS

4924 SE 84th St.
New ton, KS 67114

Valentine #1

Job Ticket: 48451

DST#: 1

ATTN: Ryan Seib

Test Start: 2012.09.17 @ 03:45:00

Mud and Cushion Information

Mud Type: Gel Chem

Cushion Type:

Oil API:

deg API

Mud Weight: 9.00 lb/gal

Cushion Length:

ft

Water Salinity:

ppm

Viscosity: 45.00 sec/qt

Cushion Volume:

bbbl

Water Loss: 7.96 in³

Gas Cushion Type:

Resistivity: ohm.m

Gas Cushion Pressure:

psig

Salinity: 2200.00 ppm

Filter Cake: 1.00 inches

Recovery Information

Recovery Table

Length ft	Description	Volume bbl
120.00	GOCM 10g 25o 65m	1.683
5.00	OCM 45o 55m	0.070

Total Length: 125.00 ft

Total Volume: 1.753 bbl

Num Fluid Samples: 0

Num Gas Bombs: 0

Serial #:

Laboratory Name:

Laboratory Location:

Recovery Comments:

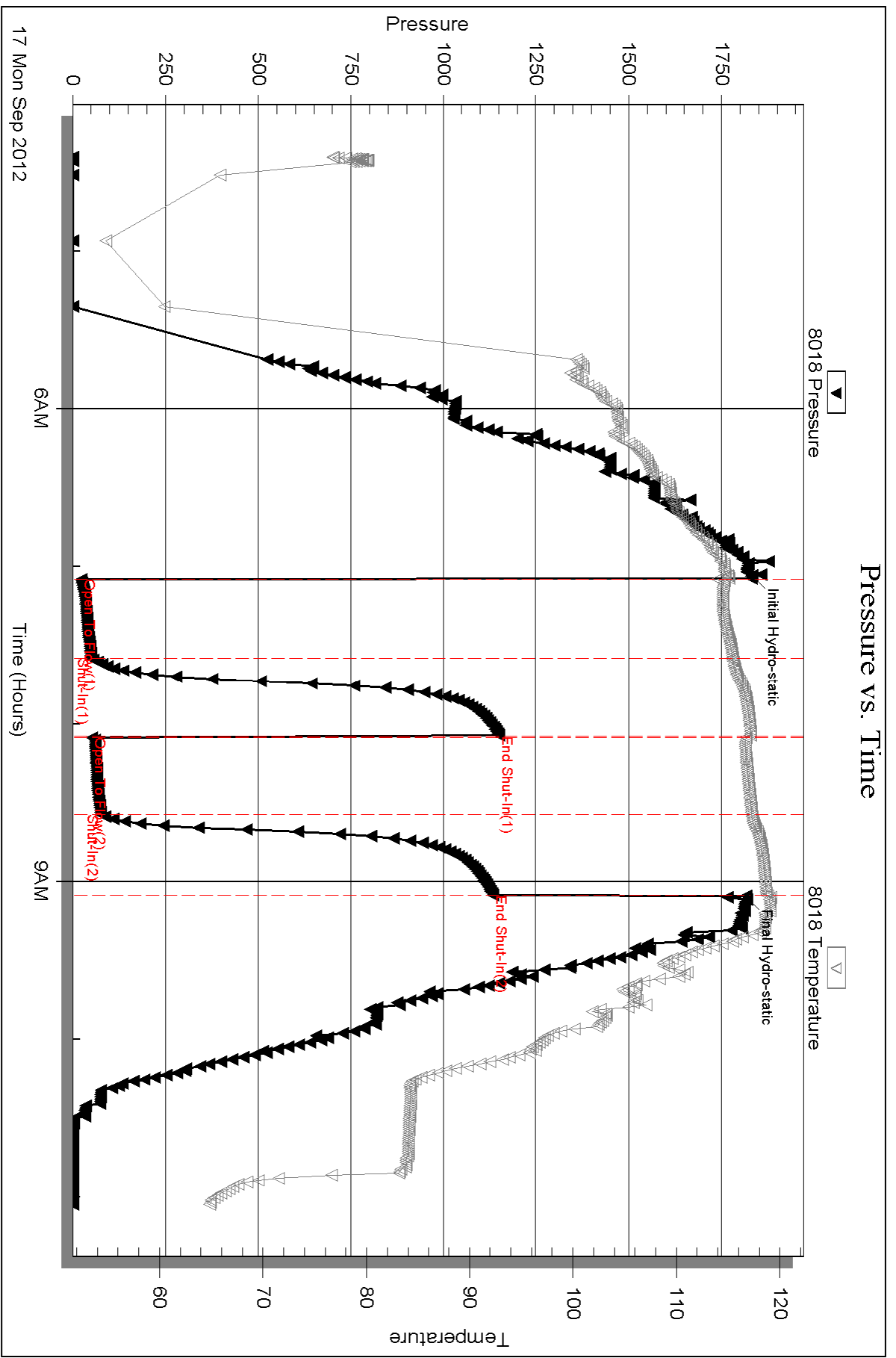
Serial #: 8018

Inside

Palomino Petroleum Inc.

Valentine #1

DST Test Number: 1



Triobite Testing, Inc

Ref. No: 48451

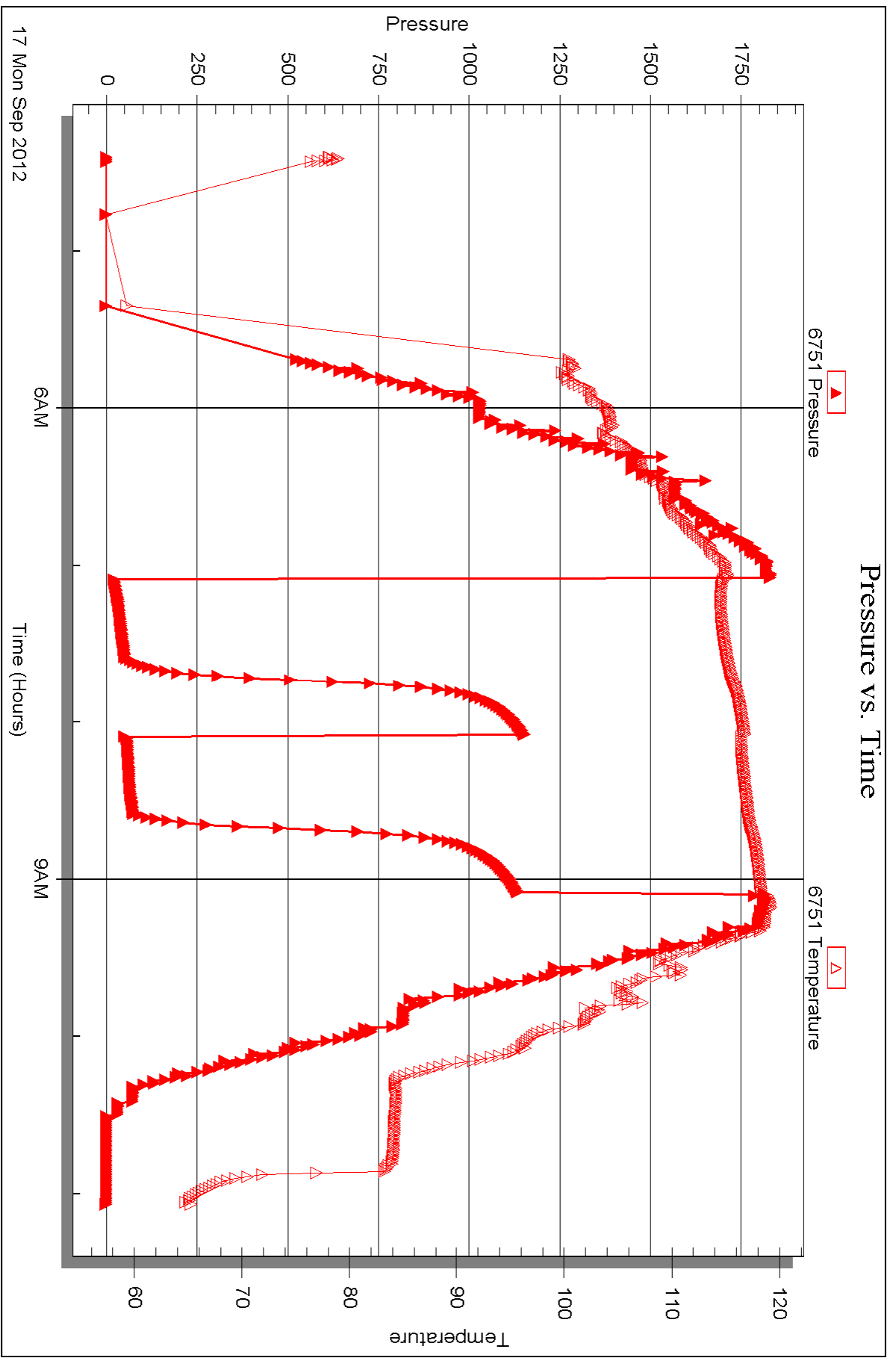
Printed: 2012.09.24 @ 15:52:13

Serial #: 6751

Outside Palomino Petroleum Inc.

Valentine #1

DST Test Number: 1



Triobite Testing, Inc

Ref. No: 48451

Printed: 2012.09.24 @ 15:52:14



DRILL STEM TEST REPORT

Prepared For: **Palomino Petroleum Inc.**

4924 SE 84th St.
Newton, KS 67114

ATTN: Ryan Seib

Valentine #1

7-15s-25w Trego,KS

Start Date: 2012.09.17 @ 22:22:00

End Date: 2012.09.18 @ 05:00:39

Job Ticket #: 48452 DST #: 2

Trilobite Testing, Inc
PO Box 362 Hays, KS 67601
ph: 785-625-4778 fax: 785-625-5620

Printed: 2012.09.24 @ 15:50:44



TRILOBITE TESTING, INC

DRILL STEM TEST REPORT

Palomino Petroleum Inc.

7-15s-25w Trego,KS

4924 SE 84th St.
New ton, KS 67114

Valentine #1

Job Ticket: 48452

DST#: 2

ATTN: Ryan Seib

Test Start: 2012.09.17 @ 22:22:00

GENERAL INFORMATION:

Formation: **Lansing**

Deviated: No Whipstock: ft (KB)

Time Tool Opened: 00:29:40

Time Test Ended: 05:00:39

Test Type: Conventional Bottom Hole (Reset)

Tester: Chuck Smith

Unit No: 62

Interval: 3881.00 ft (KB) To 3935.00 ft (KB) (TVD)

Reference Elevations: 2364.00 ft (KB)

Total Depth: 3935.00 ft (KB) (TVD)

2354.00 ft (CF)

Hole Diameter: 7.88 inches Hole Condition: Good

KB to GR/CF: 10.00 ft

Serial #: 8018

Inside

Press @ Run Depth: 21.03 psig @ 3899.00 ft (KB)

Capacity: 8000.00 psig

Start Date: 2012.09.17

End Date:

2012.09.18

Last Calib.: 2012.09.18

Start Time: 22:22:01

End Time:

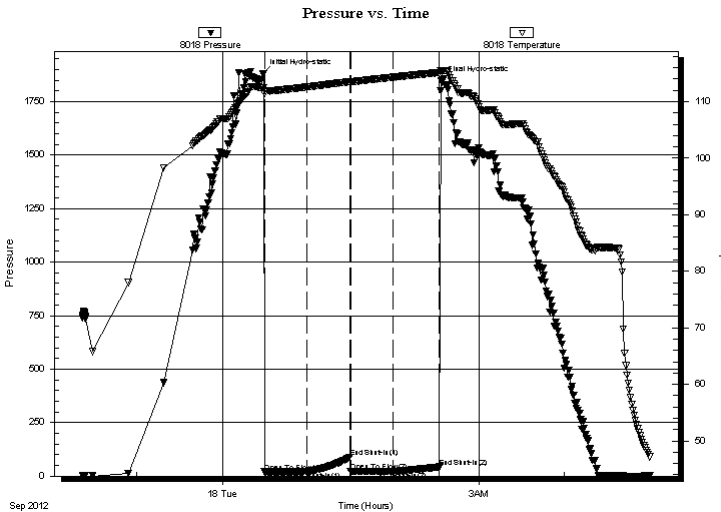
05:00:40

Time On Btm: 2012.09.18 @ 00:28:20

Time Off Btm: 2012.09.18 @ 02:33:30

TEST COMMENT: Surface blow died @ 9 min.
No return.
Surface blow died @ 7 min.
No return.

PRESSURE SUMMARY



Time (Min.)	Pressure (psig)	Temp (deg F)	Annotation
0	1881.82	112.49	Initial Hydro-static
2	19.15	111.37	Open To Flow (1)
31	21.09	112.59	Shut-In(1)
62	88.37	113.53	End Shut-In(1)
62	21.42	113.50	Open To Flow (2)
92	21.03	114.33	Shut-In(2)
125	43.21	115.16	End Shut-In(2)
126	1845.74	115.46	Final Hydro-static

Recovery

Length (ft)	Description	Volume (bbl)
5.00	OCM 5o 95m	0.07

* Recovery from multiple tests

Gas Rates

Choke (inches)	Pressure (psig)	Gas Rate (Mcf/d)



**TRILOBITE
TESTING, INC**

DRILL STEM TEST REPORT

TOOL DIAGRAM

Palomino Petroleum Inc.

7-15s-25w Trego,KS

4924 SE 84th St.
New ton, KS 67114

Valentine #1

Job Ticket: 48452

DST#: 2

ATTN: Ryan Seib

Test Start: 2012.09.17 @ 22:22:00

Tool Information

Drill Pipe:	Length: 3887.00 ft	Diameter: 3.80 inches	Volume: 54.52 bbl	Tool Weight: 2300.00 lb
Heavy Wt. Pipe:	Length: 0.00 ft	Diameter: inches	Volume: 0.00 bbl	Weight set on Packer: 22000.00 lb
Drill Collar:	Length: 0.00 ft	Diameter: 2.25 inches	Volume: 0.00 bbl	Weight to Pull Loose: 80000.00 lb
			<u>Total Volume: 54.52 bbl</u>	Tool Chased 0.00 ft
Drill Pipe Above KB:	33.50 ft			String Weight: Initial 68000.00 lb
Depth to Top Packer:	3881.00 ft			Final 68000.00 lb
Depth to Bottom Packer:	ft			
Interval between Packers:	54.00 ft			
Tool Length:	81.50 ft			
Number of Packers:	2	Diameter: 6.75 inches		

Tool Comments:

Tool Description

Tool Description	Length (ft)	Serial No.	Position	Depth (ft)	Accum. Lengths
Change Over Sub	1.00			3854.50	
Shut In Tool	5.00			3859.50	
Hydraulic tool	5.00			3864.50	
Jars	5.00			3869.50	
Safety Joint	2.50			3872.00	
Packer	5.00			3877.00	27.50 Bottom Of Top Packer
Packer	4.00			3881.00	
Stubb	1.00			3882.00	
Perforations	17.00			3899.00	
Recorder	0.00	8018	Inside	3899.00	
Recorder	0.00	6751	Outside	3899.00	
Perforations	0.00			3899.00	
Change Over Sub	1.00			3900.00	
Drill Pipe	31.00			3931.00	
Change Over Sub	1.00			3932.00	
Bullnose	3.00			3935.00	54.00 Bottom Packers & Anchor
Total Tool Length:	81.50				



**TRILOBITE
TESTING, INC**

DRILL STEM TEST REPORT

FLUID SUMMARY

Palomino Petroleum Inc.

7-15s-25w Trego,KS

4924 SE 84th St.
New ton, KS 67114

Valentine #1

Job Ticket: 48452

DST#: 2

ATTN: Ryan Seib

Test Start: 2012.09.17 @ 22:22:00

Mud and Cushion Information

Mud Type: Gel Chem

Cushion Type:

Oil API:

deg API

Mud Weight: 9.00 lb/gal

Cushion Length:

ft

Water Salinity:

ppm

Viscosity: 52.00 sec/qt

Cushion Volume:

bbbl

Water Loss: 8.76 in³

Gas Cushion Type:

Resistivity: ohm.m

Gas Cushion Pressure:

psig

Salinity: 3900.00 ppm

Filter Cake: 1.00 inches

Recovery Information

Recovery Table

Length ft	Description	Volume bbl
5.00	OCM 5o 95m	0.070

Total Length: 5.00 ft Total Volume: 0.070 bbl

Num Fluid Samples: 0

Num Gas Bombs: 0

Serial #:

Laboratory Name:

Laboratory Location:

Recovery Comments:

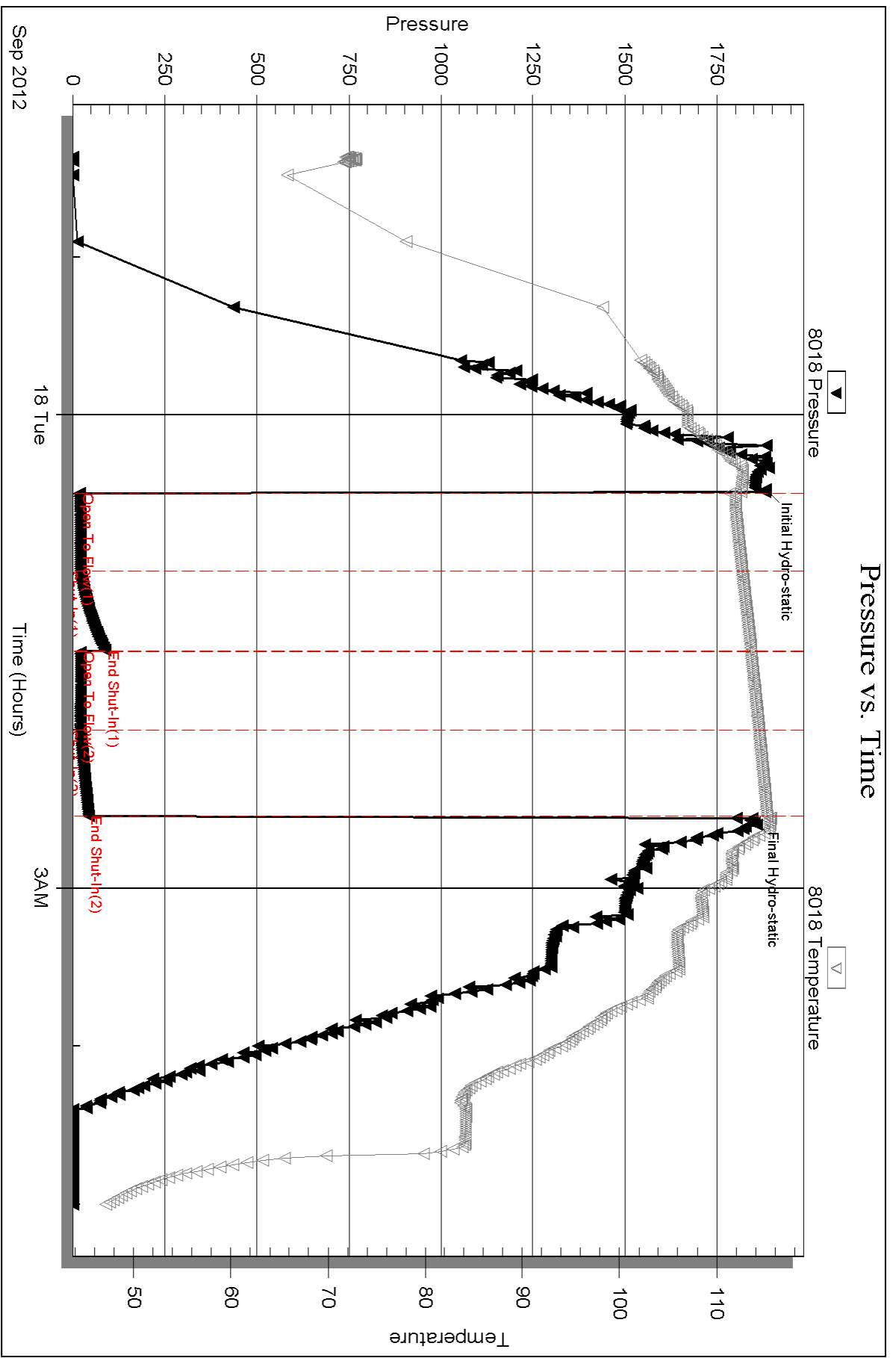
Serial #: 8018

Inside

Palomino Petroleum Inc.

Valentine #1

DST Test Number: 2



Triobite Testing, Inc

Ref. No: 48452

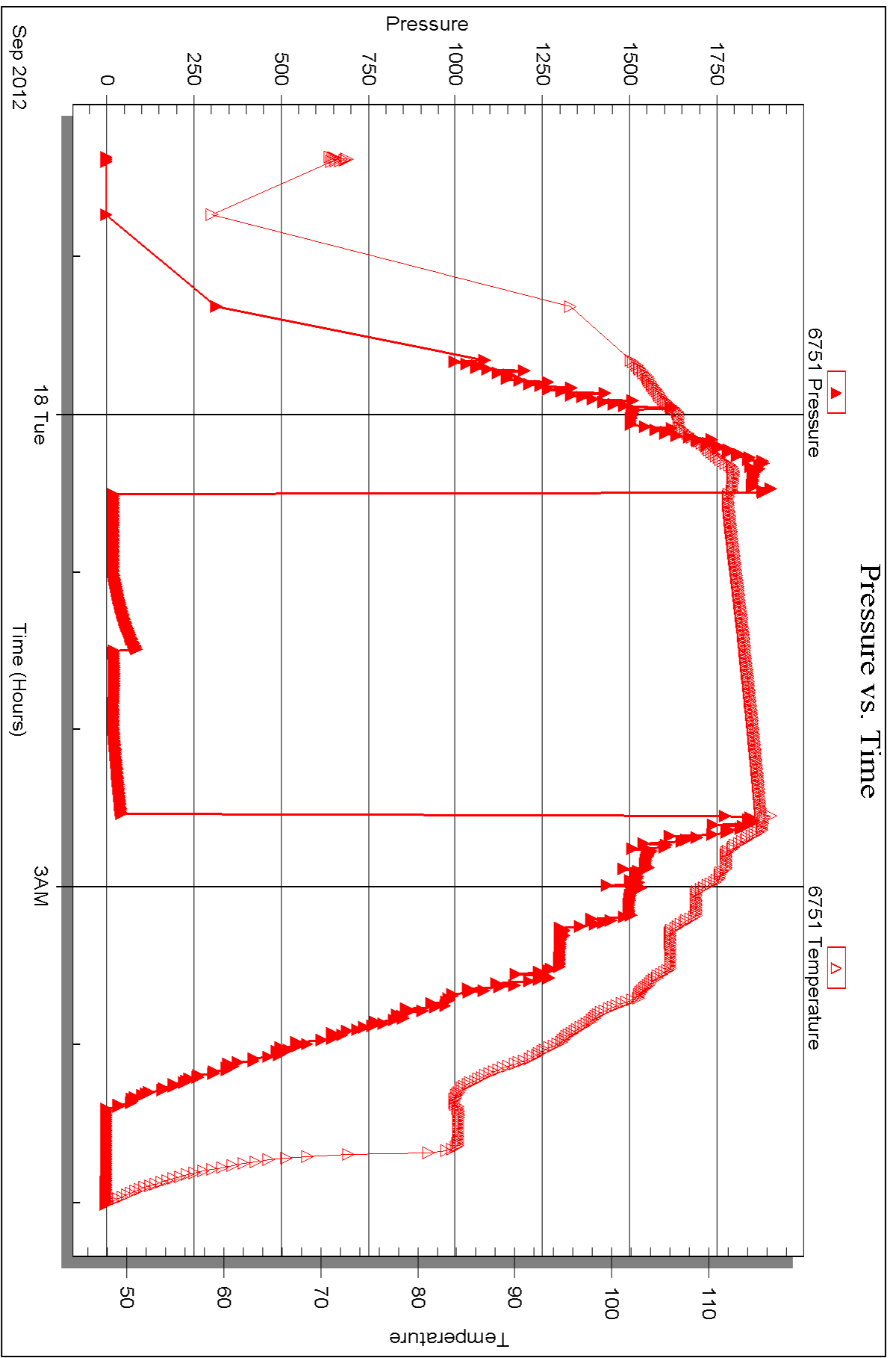
Printed: 2012.09.24 @ 15:50:49

Serial #: 6751

Outside Palomino Petroleum Inc.

Valentine #1

DST Test Number: 2





DRILL STEM TEST REPORT

Prepared For: **Palomino Petroleum Inc.**

4924 SE 84th St.
Newton, KS 67114

ATTN: Ryan Seib

Valentine #1

7-15s-25w Trego,KS

Start Date: 2012.09.19 @ 09:07:00

End Date: 2012.09.19 @ 16:28:39

Job Ticket #: 48453 DST #: 3

Trilobite Testing, Inc

PO Box 362 Hays, KS 67601

ph: 785-625-4778 fax: 785-625-5620

Printed: 2012.09.24 @ 15:49:24



TRILOBITE
TESTING, INC

DRILL STEM TEST REPORT

Palomino Petroleum Inc.

7-15s-25w Trego,KS

4924 SE 84th St.
New ton, KS 67114

Valentine #1

Job Ticket: 48453

DST#: 3

ATTN: Ryan Seib

Test Start: 2012.09.19 @ 09:07:00

GENERAL INFORMATION:

Formation: **Mississippian**

Deviated: No Whipstock: ft (KB)

Time Tool Opened: 11:28:20

Time Test Ended: 16:28:39

Test Type: Conventional Bottom Hole (Reset)

Tester: Chuck Smith

Unit No: 62

Interval: 4224.00 ft (KB) To 4298.00 ft (KB) (TVD)

Reference Elevations: 2364.00 ft (KB)

Total Depth: 4298.00 ft (KB) (TVD)

2354.00 ft (CF)

Hole Diameter: 7.88 inches Hole Condition: Good

KB to GR/CF: 10.00 ft

Serial #: 8018 Inside

Press @ RunDepth: 79.23 psig @ 4232.00 ft (KB)

Capacity: 8000.00 psig

Start Date: 2012.09.19

End Date:

2012.09.19

Last Calib.: 2012.09.19

Start Time: 09:07:01

End Time:

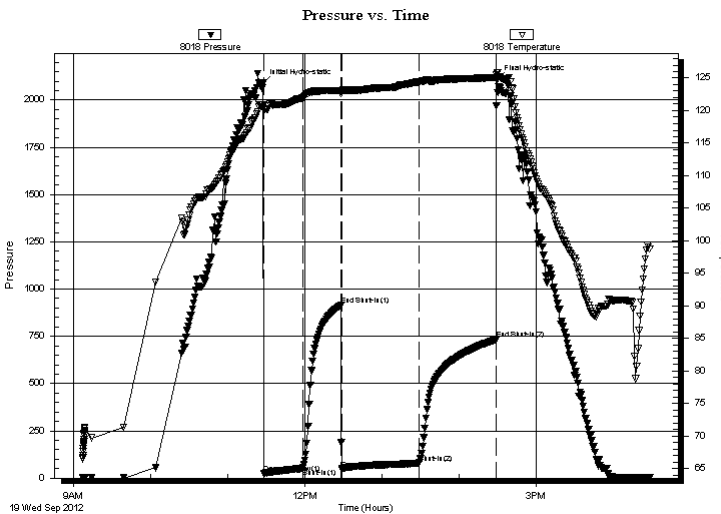
16:28:40

Time On Btm: 2012.09.19 @ 11:27:00

Time Off Btm: 2012.09.19 @ 14:29:30

TEST COMMENT: 9" Blow.
No return.
B.O.B. @ 45 min.
Weak surface return died @ 15 min.

PRESSURE SUMMARY



Time (Min.)	Pressure (psig)	Temp (deg F)	Annotation
0	2089.34	120.94	Initial Hydro-static
2	23.40	120.14	Open To Flow (1)
32	51.72	121.95	Shut-In(1)
62	915.13	123.08	End Shut-In(1)
62	48.61	122.92	Open To Flow (2)
122	79.23	124.40	Shut-In(2)
182	733.45	125.10	End Shut-In(2)
183	2105.84	125.86	Final Hydro-static

Recovery

Length (ft)	Description	Volume (bbl)
122.00	GOCM 10g 25 o 65m	1.71
31.00	GOCM 10g 40o 50m	0.43

Gas Rates

	Choke (inches)	Pressure (psig)	Gas Rate (Mcf/d)

* Recovery from multiple tests



**TRILOBITE
TESTING, INC**

DRILL STEM TEST REPORT

TOOL DIAGRAM

Palomino Petroleum Inc.

7-15s-25w Trego,KS

4924 SE 84th St.
New ton, KS 67114

Valentine #1

Job Ticket: 48453

DST#: 3

ATTN: Ryan Seib

Test Start: 2012.09.19 @ 09:07:00

Tool Information

Drill Pipe:	Length: 4224.00 ft	Diameter: 3.80 inches	Volume: 59.25 bbl	Tool Weight:	2300.00 lb
Heavy Wt. Pipe:	Length: 0.00 ft	Diameter: inches	Volume: 0.00 bbl	Weight set on Packer:	22000.00 lb
Drill Collar:	Length: 0.00 ft	Diameter: 2.25 inches	Volume: 0.00 bbl	Weight to Pull Loose:	85000.00 lb
			<u>Total Volume: 59.25 bbl</u>	Tool Chased	0.00 ft
Drill Pipe Above KB:	27.50 ft			String Weight: Initial	74000.00 lb
Depth to Top Packer:	4224.00 ft			Final	75000.00 lb
Depth to Bottom Packer:	ft				
Interval between Packers:	74.00 ft				
Tool Length:	101.50 ft				
Number of Packers:	2	Diameter: 6.75 inches			
Tool Comments:					

Tool Description

Tool Description	Length (ft)	Serial No.	Position	Depth (ft)	Accum. Lengths
Change Over Sub	1.00			4197.50	
Shut In Tool	5.00			4202.50	
Hydraulic tool	5.00			4207.50	
Jars	5.00			4212.50	
Safety Joint	2.50			4215.00	
Packer	5.00			4220.00	27.50 Bottom Of Top Packer
Packer	4.00			4224.00	
Stubb	1.00			4225.00	
Perforations	7.00			4232.00	
Recorder	0.00	8018	Inside	4232.00	
Recorder	0.00	6751	Outside	4232.00	
Perforations	0.00			4232.00	
Change Over Sub	1.00			4233.00	
Drill Pipe	61.00			4294.00	
Change Over Sub	1.00			4295.00	
Bullnose	3.00			4298.00	74.00 Bottom Packers & Anchor
Total Tool Length:	101.50				



TRILOBITE
TESTING, INC

DRILL STEM TEST REPORT

FLUID SUMMARY

Palomino Petroleum Inc.

7-15s-25w Trego,KS

4924 SE 84th St.
New ton, KS 67114

Valentine #1

Job Ticket: 48453

DST#: 3

ATTN: Ryan Seib

Test Start: 2012.09.19 @ 09:07:00

Mud and Cushion Information

Mud Type: Gel Chem

Mud Weight: 9.00 lb/gal

Viscosity: 50.00 sec/qt

Water Loss: 8.37 in³

Resistivity: ohm.m

Salinity: 3800.00 ppm

Filter Cake: 1.00 inches

Cushion Type:

Cushion Length: ft

Cushion Volume: bbl

Gas Cushion Type:

Gas Cushion Pressure: psig

Oil API:

Water Salinity: deg API

ppm

Recovery Information

Recovery Table

Length ft	Description	Volume bbl
122.00	GOCM 10g 25 o 65m	1.711
31.00	GOCM 10g 40o 50m	0.435

Total Length: 153.00 ft Total Volume: 2.146 bbl

Num Fluid Samples: 0

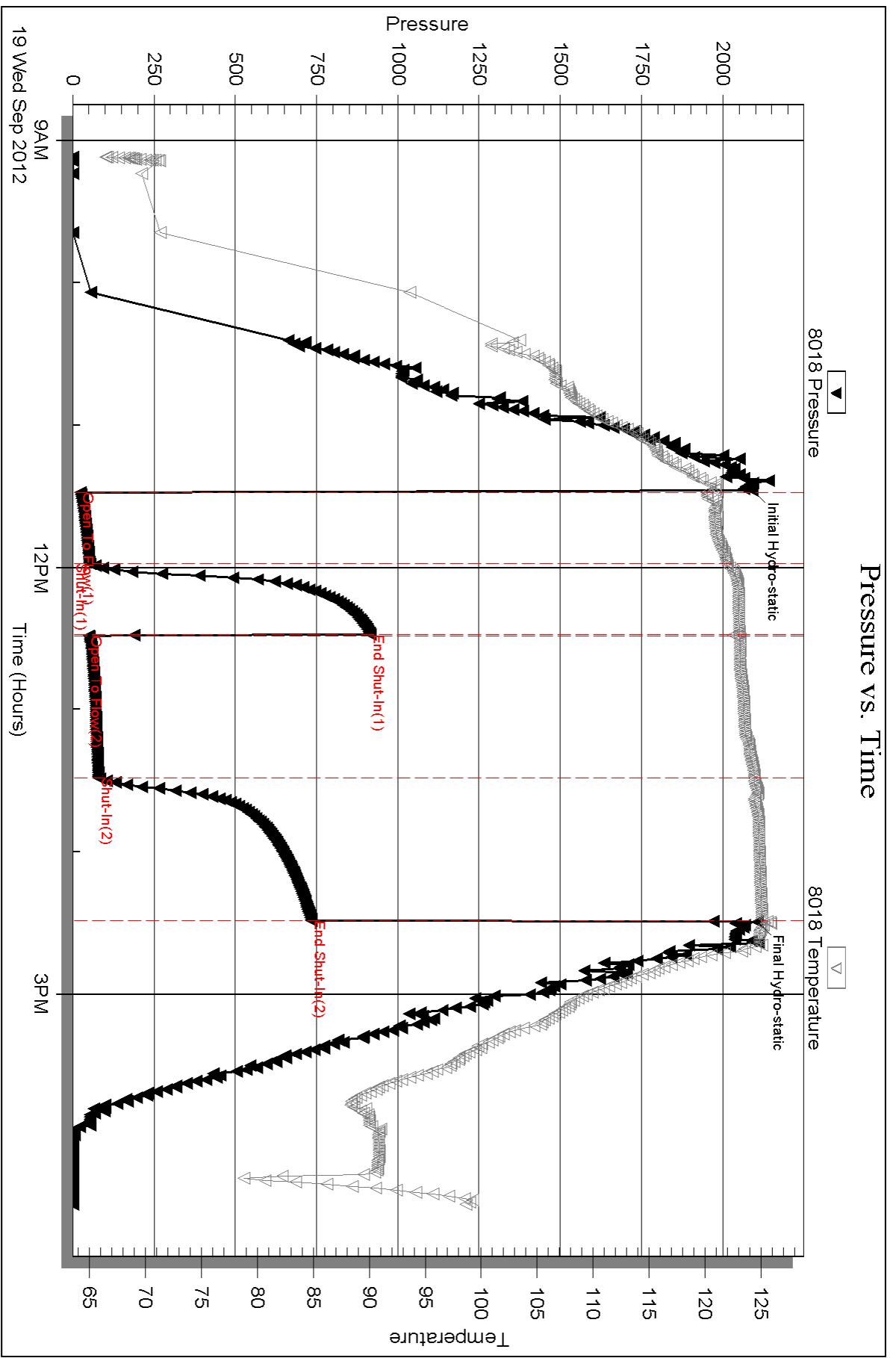
Num Gas Bombs: 0

Serial #:

Laboratory Name:

Laboratory Location:

Recovery Comments:

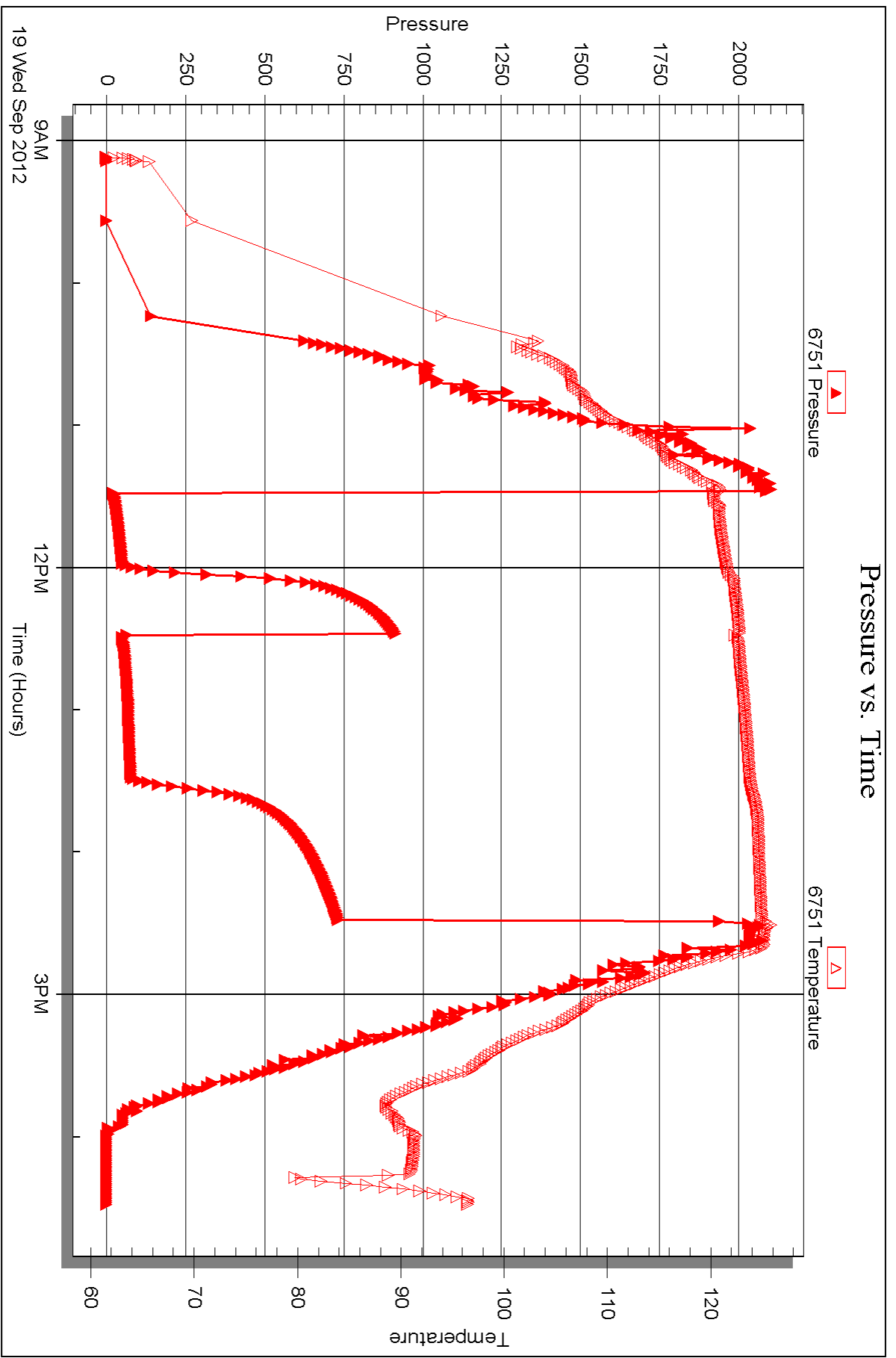


Serial #: 6751

Outside Palomino Petroleum Inc.

Valentine #1

DST Test Number: 3





DRILL STEM TEST REPORT

Prepared For: **Palomino Petroleum Inc.**

4924 SE 84th St.
Newton, KS 67114

ATTN: Ryan Seib

Valentine #1

7-15s-25w Trego,KS

Start Date: 2012.09.20 @ 00:52:00

End Date: 2012.09.20 @ 07:23:00

Job Ticket #: 48454 DST #: 4

Trilobite Testing, Inc

PO Box 362 Hays, KS 67601

ph: 785-625-4778 fax: 785-625-5620

Printed: 2012.09.24 @ 15:48:34



**TRILOBITE
TESTING, INC**

DRILL STEM TEST REPORT

Palomino Petroleum Inc.

7-15s-25w Trego,KS

4924 SE 84th St.
New ton, KS 67114

Valentine #1

Job Ticket: 48454

DST#: 4

ATTN: Ryan Seib

Test Start: 2012.09.20 @ 00:52:00

GENERAL INFORMATION:

Formation: **Mississippian**

Deviated: No Whipstock: ft (KB)

Time Tool Opened: 03:14:30

Time Test Ended: 07:23:00

Test Type: Conventional Bottom Hole (Reset)

Tester: Chuck Smith

Unit No: 62

Interval: 4396.00 ft (KB) To 4323.00 ft (KB) (TVD)

Reference Elevations: 2364.00 ft (KB)

Total Depth: 4323.00 ft (KB) (TVD)

2354.00 ft (CF)

Hole Diameter: 7.88 inches Hole Condition: Good

KB to GR/CF: 10.00 ft

Serial #: 8018

Inside

Press @ RunDepth: 22.43 psig @ 4320.00 ft (KB)

Capacity: 8000.00 psig

Start Date: 2012.09.20

End Date:

2012.09.20

Last Calib.:

2012.09.20

Start Time: 00:52:01

End Time:

07:23:00

Time On Btm:

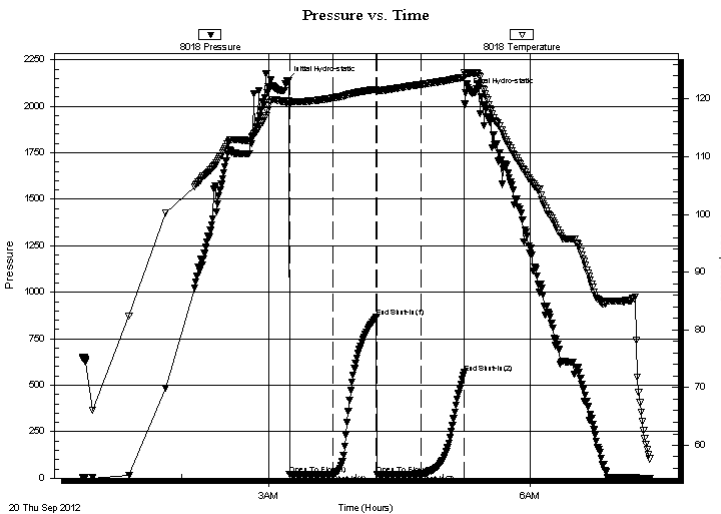
2012.09.20 @ 03:12:30

Time Off Btm:

2012.09.20 @ 05:15:50

TEST COMMENT: 1/4" Blow .
No return.
No blow .
No return.

PRESSURE SUMMARY



Time (Min.)	Pressure (psig)	Temp (deg F)	Annotation
0	2136.74	119.47	Initial Hydro-static
2	19.31	119.04	Open To Flow (1)
33	21.13	120.17	Shut-In(1)
62	867.14	121.69	End Shut-In(1)
63	21.65	121.23	Open To Flow (2)
93	22.43	122.52	Shut-In(2)
123	567.43	123.77	End Shut-In(2)
124	2072.15	124.28	Final Hydro-static

Recovery

Length (ft)	Description	Volume (bbl)
10.00	OCM 2o 98m	0.14

* Recovery from multiple tests

Gas Rates

Choke (inches)	Pressure (psig)	Gas Rate (Mcf/d)



**TRILOBITE
TESTING, INC**

DRILL STEM TEST REPORT

TOOL DIAGRAM

Palomino Petroleum Inc.

7-15s-25w Trego,KS

4924 SE 84th St.
New ton, KS 67114

Valentine #1

Job Ticket: 48454

DST#: 4

ATTN: Ryan Seib

Test Start: 2012.09.20 @ 00:52:00

Tool Information

Drill Pipe:	Length: 4295.00 ft	Diameter: 3.80 inches	Volume: 60.25 bbl	Tool Weight: 2300.00 lb
Heavy Wt. Pipe:	Length: 0.00 ft	Diameter: inches	Volume: 0.00 bbl	Weight set on Packer: 25000.00 lb
Drill Collar:	Length: 0.00 ft	Diameter: 2.25 inches	Volume: 0.00 bbl	Weight to Pull Loose: 90000.00 lb
			<u>Total Volume: 60.25 bbl</u>	Tool Chased 0.00 ft
Drill Pipe Above KB:	26.50 ft			String Weight: Initial 74000.00 lb
Depth to Top Packer:	4296.00 ft			Final 74000.00 lb
Depth to Bottom Packer:	ft			
Interval between Packers:	27.00 ft			
Tool Length:	54.50 ft			
Number of Packers:	2	Diameter: 6.75 inches		

Tool Comments:

Tool Description	Length (ft)	Serial No.	Position	Depth (ft)	Accum. Lengths
------------------	-------------	------------	----------	------------	----------------

Change Over Sub	1.00			4269.50	
Shut In Tool	5.00			4274.50	
Hydraulic tool	5.00			4279.50	
Jars	5.00			4284.50	
Safety Joint	2.50			4287.00	
Packer	5.00			4292.00	27.50 Bottom Of Top Packer
Packer	4.00			4296.00	
Stubb	1.00			4297.00	
Perforations	23.00			4320.00	
Recorder	0.00	8018	Inside	4320.00	
Recorder	0.00	6751	Outside	4320.00	
Perforations	0.00			4320.00	
Bullnose	3.00			4323.00	27.00 Bottom Packers & Anchor

Total Tool Length: 54.50



**TRILOBITE
TESTING, INC**

DRILL STEM TEST REPORT

FLUID SUMMARY

Palomino Petroleum Inc.

7-15s-25w Trego,KS

4924 SE 84th St.
New ton, KS 67114

Valentine #1

Job Ticket: 48454

DST#: 4

ATTN: Ryan Seib

Test Start: 2012.09.20 @ 00:52:00

Mud and Cushion Information

Mud Type: Gel Chem

Cushion Type:

Oil API:

deg API

Mud Weight: 9.00 lb/gal

Cushion Length:

ft

Water Salinity:

ppm

Viscosity: 59.00 sec/qt

Cushion Volume:

bbbl

Water Loss: 8.38 in³

Gas Cushion Type:

Resistivity: ohm.m

Gas Cushion Pressure:

psig

Salinity: 3800.00 ppm

Filter Cake: 1.00 inches

Recovery Information

Recovery Table

Length ft	Description	Volume bbl
10.00	OCM 2o 98m	0.140

Total Length: 10.00 ft Total Volume: 0.140 bbl

Num Fluid Samples: 0

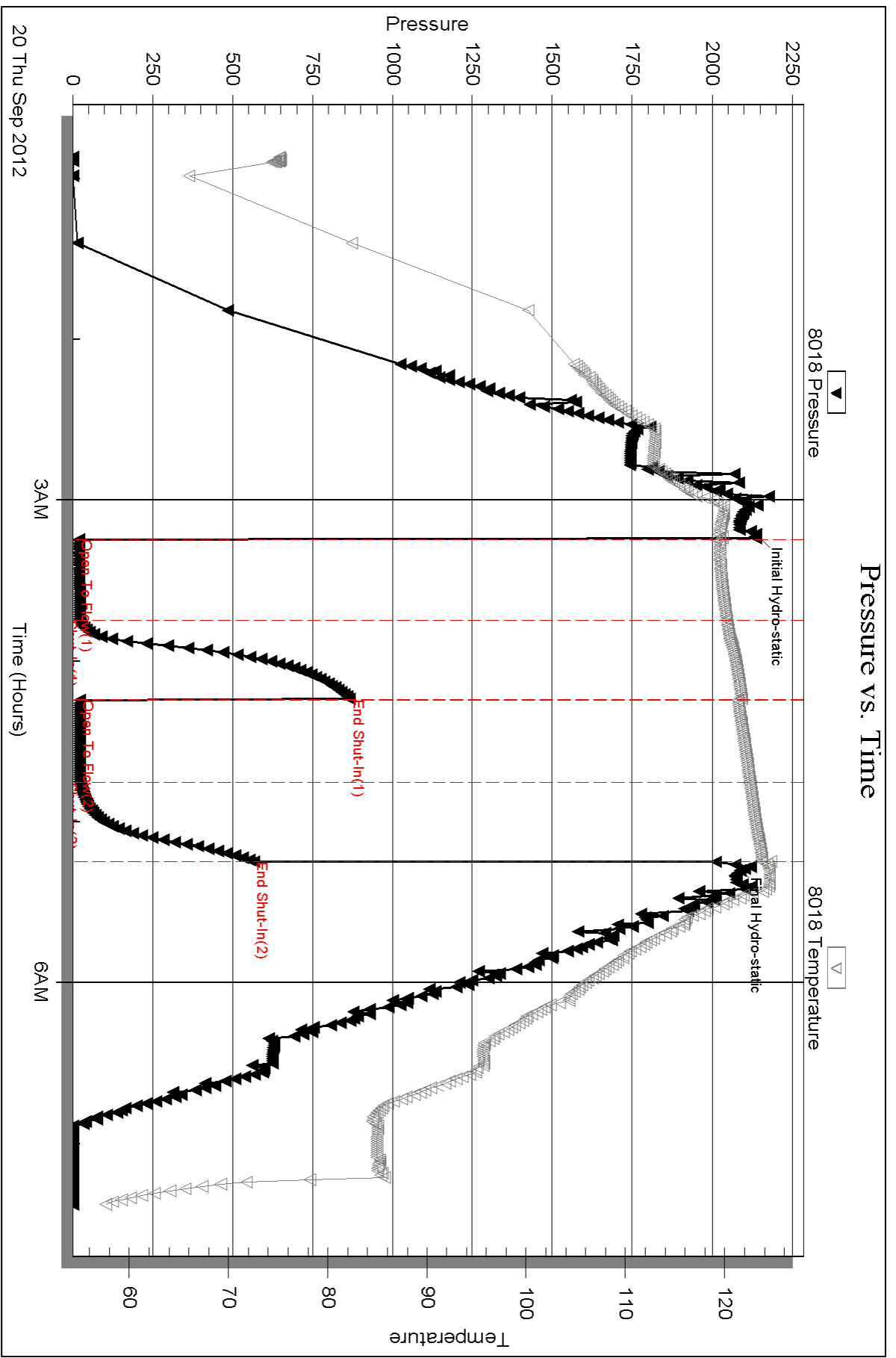
Num Gas Bombs: 0

Serial #:

Laboratory Name:

Laboratory Location:

Recovery Comments:



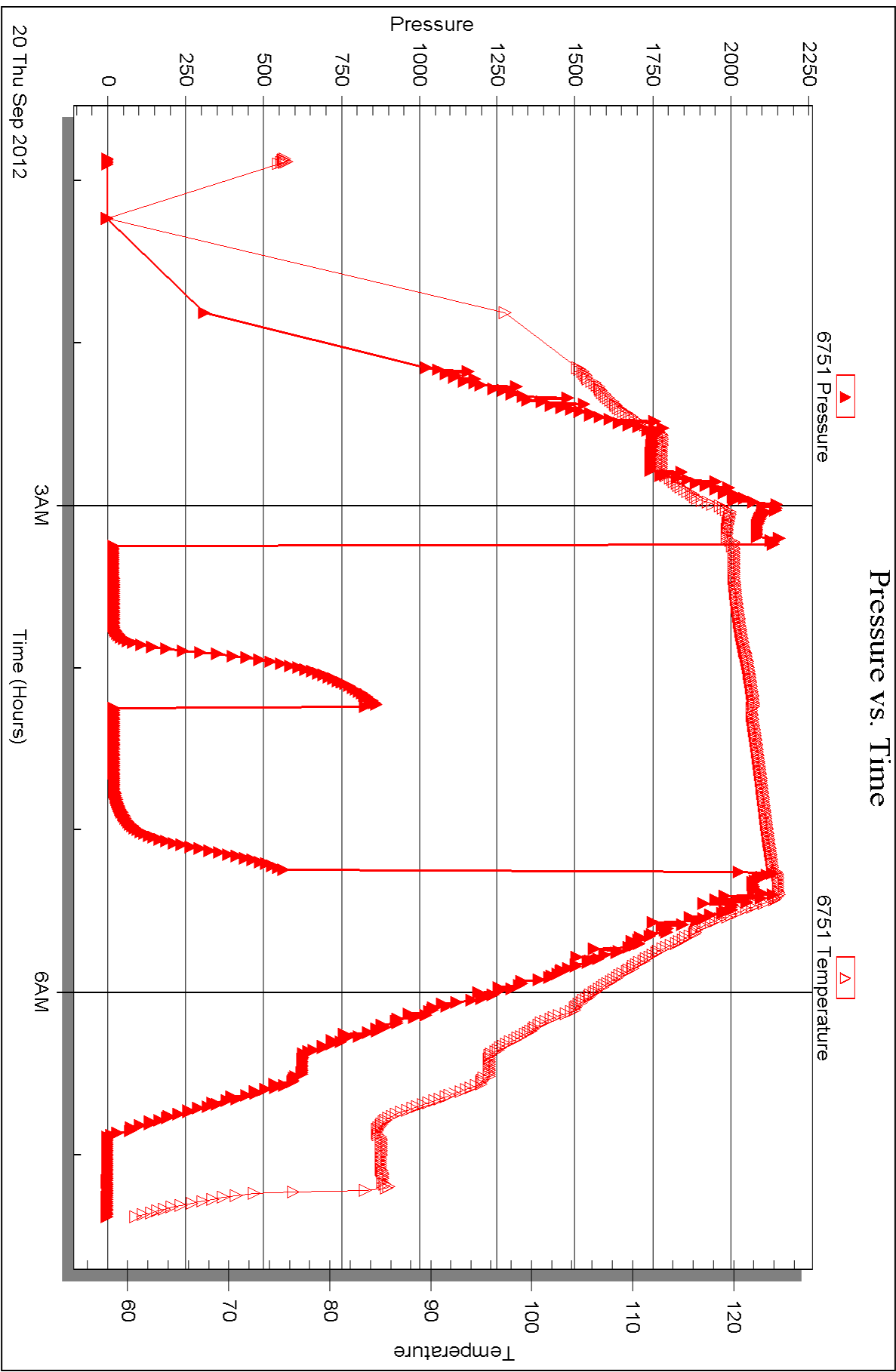
Serial #: 6751

Outside

Palomino Petroleum Inc.

Valentine #1

DST Test Number: 4





DRILL STEM TEST REPORT

Prepared For: **Palomino Petroleum Inc.**

4924 SE 84th St.
Newton, KS 67114

ATTN: Ryan Seib

Valentine #1

7-15s-25w Trego,KS

Start Date: 2012.09.20 @ 23:55:16

End Date: 2012.09.21 @ 08:30:31

Job Ticket #: 47868 DST #: 5

Trilobite Testing, Inc

PO Box 362 Hays, KS 67601

ph: 785-625-4778 fax: 785-625-5620

Printed: 2012.09.24 @ 15:47:34



TRILOBITE TESTING, INC

DRILL STEM TEST REPORT

Palomino Petroleum Inc.

7-15s-25w Trego,KS

4924 SE 84th St.
New ton, KS 67114

Valentine #1

Job Ticket: 47868

DST#: 5

ATTN: Ryan Seib

Test Start: 2012.09.20 @ 23:55:16

GENERAL INFORMATION:

Formation: **Ft Scott**

Deviated: No Whipstock: ft (KB)

Time Tool Opened: 03:12:31

Time Test Ended: 08:30:31

Test Type: Conventional Straddle (Reset)

Tester: Jason McLemore

Unit No: 54

Interval: 4144.00 ft (KB) To 4220.00 ft (KB) (TVD)

Reference Elevations: 2364.00 ft (KB)

Total Depth: 4380.00 ft (KB) (TVD)

2354.00 ft (CF)

Hole Diameter: 7.88 inches Hole Condition: Good

KB to GR/CF: 10.00 ft

Serial #: 8366 Inside

Press @ Run Depth: 170.05 psig @ 4211.00 ft (KB)

Capacity: 8000.00 psig

Start Date: 2012.09.20 End Date: 2012.09.21

Last Calib.: 2012.09.21

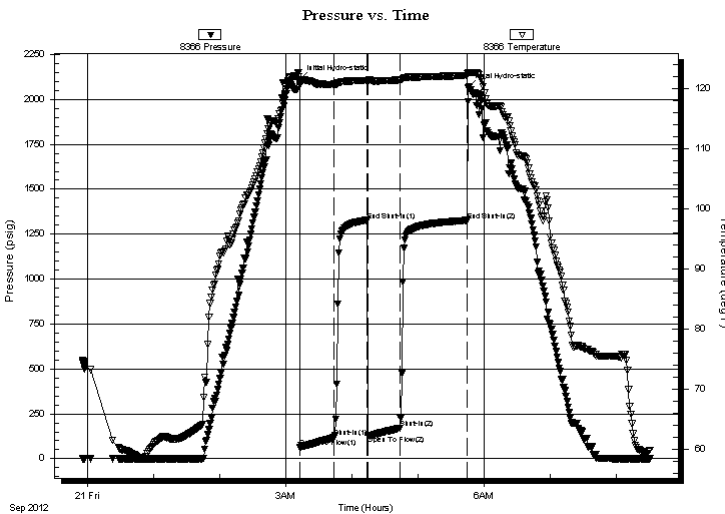
Start Time: 23:55:18 End Time: 08:30:31

Time On Btm: 2012.09.21 @ 03:12:16

Time Off Btm: 2012.09.21 @ 05:45:31

TEST COMMENT: IFP-Strong, BOB in 4 Min.
ISI-Blow back Built to 3/4"
FFP-Strong, BOB in 5 Min.
FSI-Blow back Built to 1"

PRESSURE SUMMARY



Time (Min.)	Pressure (psig)	Temp (deg F)	Annotation
0	2110.45	121.15	Initial Hydro-static
1	60.92	120.59	Open To Flow (1)
32	117.19	120.73	Shut-In(1)
62	1325.75	121.40	End Shut-In(1)
62	131.82	121.23	Open To Flow (2)
91	170.05	121.43	Shut-In(2)
152	1326.14	122.22	End Shut-In(2)
154	2067.16	122.67	Final Hydro-static

Recovery

Length (ft)	Description	Volume (bbl)
330.00	GMO 30%G 60%O 10%M	4.63
0.00	1710' GIP	0.00

Gas Rates

	Choke (inches)	Pressure (psig)	Gas Rate (Mcf/d)

* Recovery from multiple tests



**TRILOBITE
TESTING, INC**

DRILL STEM TEST REPORT

TOOL DIAGRAM

Palomino Petroleum Inc.

7-15s-25w Trego,KS

4924 SE 84th St.
New ton, KS 67114

Valentine #1

Job Ticket: 47868

DST#: 5

ATTN: Ryan Seib

Test Start: 2012.09.20 @ 23:55:16

Tool Information

Drill Pipe:	Length: 4136.00 ft	Diameter: 3.80 inches	Volume: 58.02 bbl	Tool Weight: 2300.00 lb
Heavy Wt. Pipe:	Length: 0.00 ft	Diameter: inches	Volume: 0.00 bbl	Weight set on Packer: 25000.00 lb
Drill Collar:	Length: 0.00 ft	Diameter: 2.25 inches	Volume: 0.00 bbl	Weight to Pull Loose: 85000.00 lb
			<u>Total Volume: 58.02 bbl</u>	Tool Chased 0.00 ft
Drill Pipe Above KB:	20.00 ft			String Weight: Initial 75000.00 lb
Depth to Top Packer:	4144.00 ft			Final 76000.00 lb
Depth to Bottom Packer:	4220.00 ft			
Interval between Packers:	76.00 ft			
Tool Length:	264.00 ft			
Number of Packers:	3	Diameter: 6.75 inches		
Tool Comments:				

Tool Description

Length (ft) Serial No. Position Depth (ft) Accum. Lengths

Tool Description	Length (ft)	Serial No.	Position	Depth (ft)	Accum. Lengths
Change Over Sub	1.00			4117.00	
Shut In Tool	5.00			4122.00	
Hydraulic tool	5.00			4127.00	
Jars	5.00			4132.00	
Safety Joint	2.00			4134.00	
Packer	5.00			4139.00	28.00 Bottom Of Top Packer
Packer	5.00			4144.00	
Stubb	1.00			4145.00	
Perforations	2.00			4147.00	
Change Over Sub	1.00			4148.00	
Blank Spacing	62.00			4210.00	
Change Over Sub	1.00			4211.00	
Recorder	0.00	8366	Inside	4211.00	
Recorder	0.00	8789	Outside	4211.00	
Perforations	5.00			4216.00	
Blank Off Sub	1.00			4217.00	
Blank Spacing	3.00			4220.00	76.00 Tool Interval
Packer	1.00			4221.00	
Change Over Sub	1.00			4222.00	
Recorder	0.00	8289	Below	4222.00	
Blank Spacing	154.00			4376.00	
Change Over Sub	1.00			4377.00	
Bullnose	3.00			4380.00	160.00 Bottom Packers & Anchor
Total Tool Length:	264.00				



**TRILOBITE
TESTING, INC**

DRILL STEM TEST REPORT

FLUID SUMMARY

Palomino Petroleum Inc.

7-15s-25w Trego,KS

4924 SE 84th St.
New ton, KS 67114

Valentine #1

Job Ticket: 47868

DST#: 5

ATTN: Ryan Seib

Test Start: 2012.09.20 @ 23:55:16

Mud and Cushion Information

Mud Type: Gel Chem

Cushion Type:

Oil API:

38 deg API

Mud Weight: 9.00 lb/gal

Cushion Length:

ft

Water Salinity:

ppm

Viscosity: 45.00 sec/qt

Cushion Volume:

bbbl

Water Loss: 7.96 in³

Gas Cushion Type:

Resistivity: ohm.m

Gas Cushion Pressure:

psig

Salinity: 2200.00 ppm

Filter Cake: 1.00 inches

Recovery Information

Recovery Table

Length ft	Description	Volume bbl
330.00	GMO 30%G 60%O 10%M	4.629
0.00	1710' GIP	0.000

Total Length: 330.00 ft Total Volume: 4.629 bbl

Num Fluid Samples: 0

Num Gas Bombs: 0

Serial #:

Laboratory Name:

Laboratory Location:

Recovery Comments:

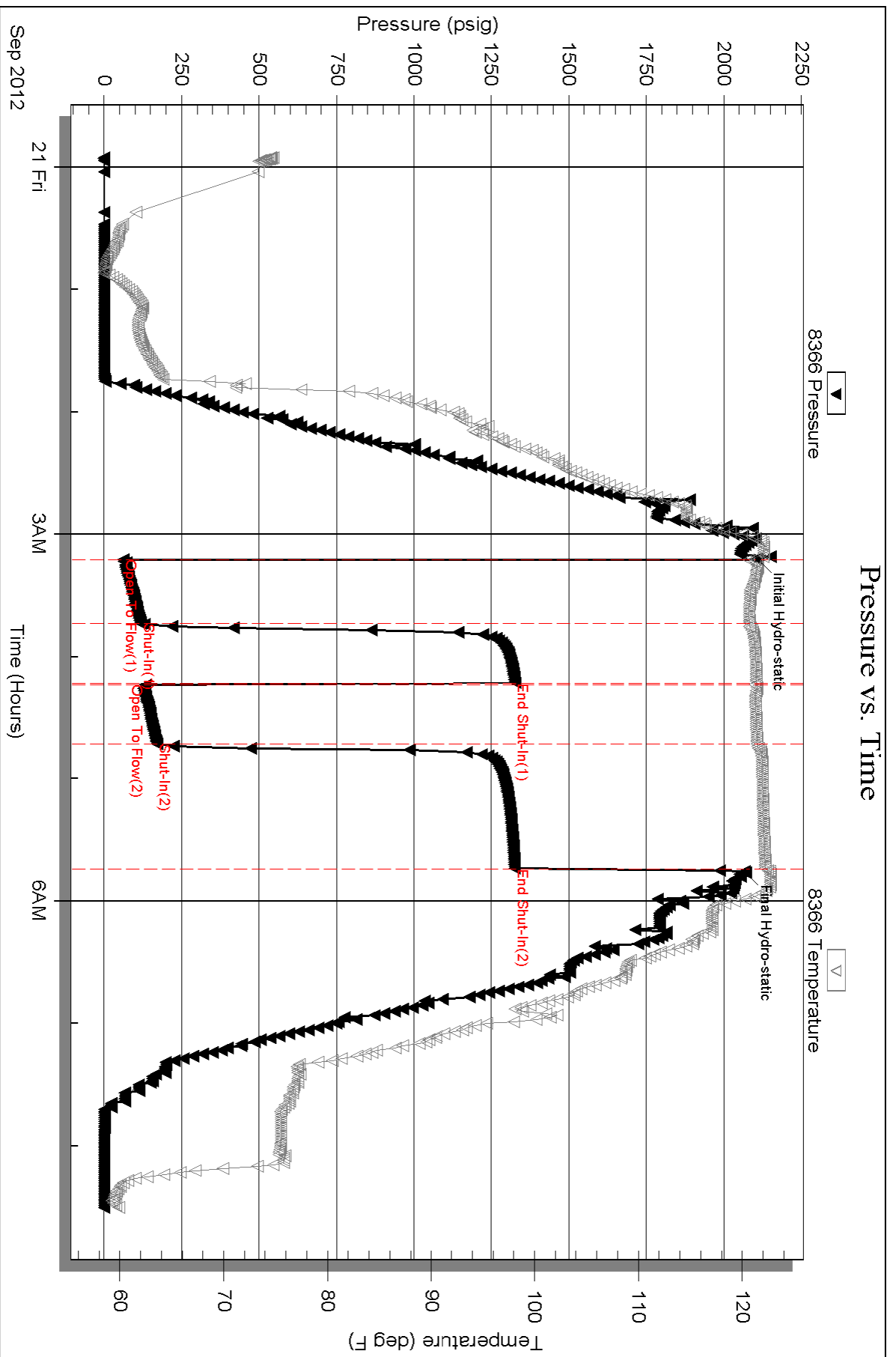
Serial #: 8366

Inside

Palomino Petroleum Inc.

Valentine #1

DST Test Number: 5



Triobite Testing, Inc

Ref. No: 47868

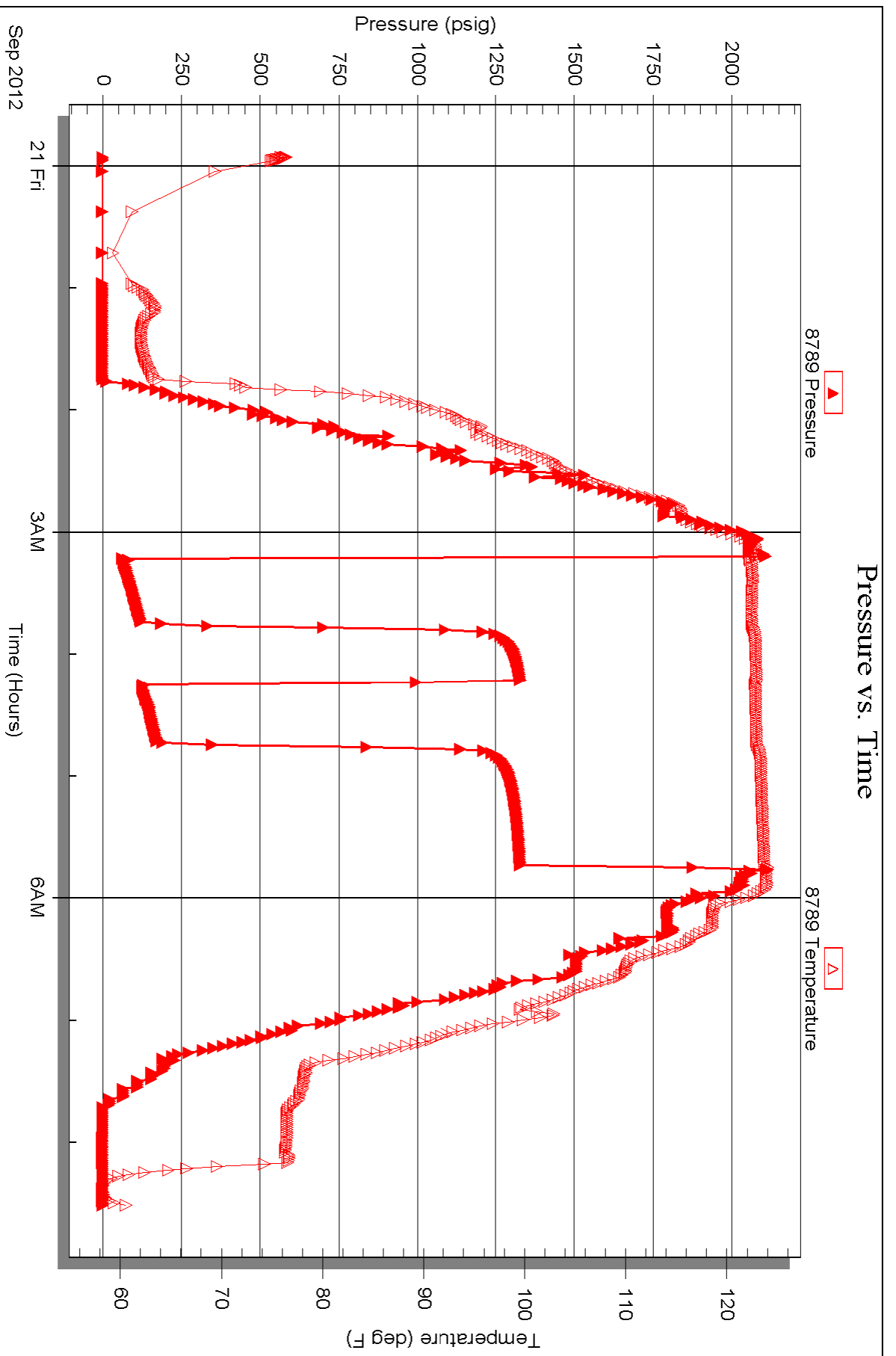
Printed: 2012.09.24 @ 15:47:39

Serial #: 8789

Outside Palomino Petroleum Inc.

Valentine #1

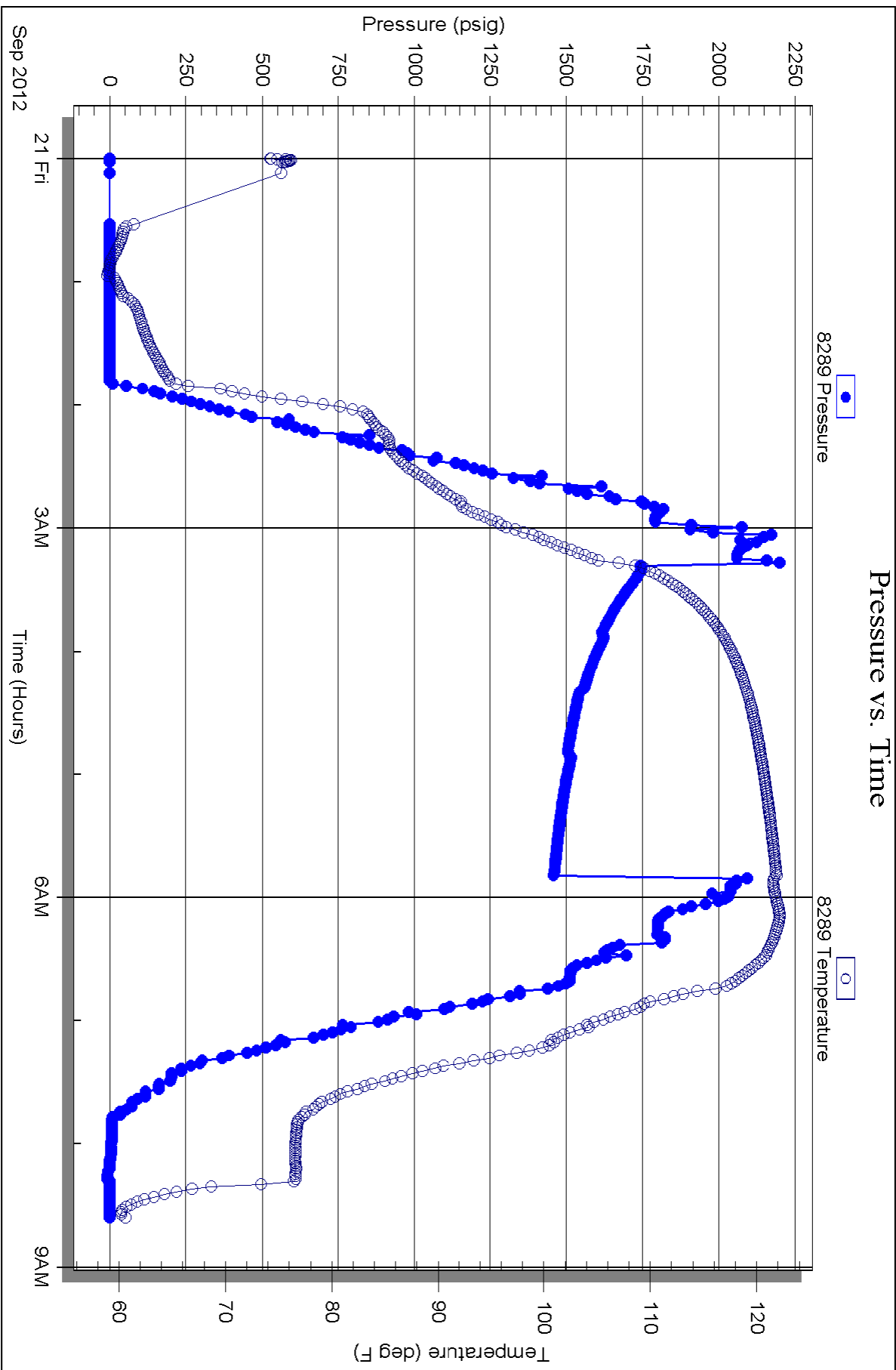
DST Test Number: 5

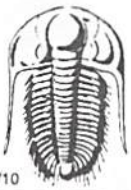


Triobite Testing, Inc

Ref. No: 47868

Printed: 2012.09.24 @ 15:47:40





TRILOBITE TESTING INC.

P.O. Box 1733 • Hays, Kansas 67601

Test Ticket

NO. 48451

Well Name & No. Valentine #1 Test No. 1 Date 9-17-12
 Company Palomino Petroleum Inc. Elevation _____ KB 2354 GL _____
 Address 4924 SE 84th St. Newton, KS 67114
 Co. Rep / Geo. Ryan Seib Rig Val #2
 Location: Sec. 7 Twp. 15s Rge. 25w Co. Good Trego State KS

Interval Tested 3810-3880 Zone Tested Lansing
 Anchor Length 70 Drill Pipe Run 3795 Mud Wt. 9.1
 Top Packer Depth 3806 Drill Collars Run 0 Vis 45
 Bottom Packer Depth 3810 Wt. Pipe Run 0 WL 8.0
 Total Depth 3880 Chlorides 2200 ppm System LCM 1"
 Blow Description B.O.B. @ 27 min.
No return.
B.O.B. @ 10 min.

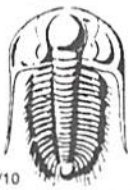
Rec	Feet of	%gas	%oil	%water	%mud
Rec <u>5</u>	Feet of <u>OCM</u>	%gas	<u>45%</u> oil	%water	<u>55%</u> mud
Rec <u>120</u>	Feet of <u>6OCM</u>	<u>10%</u> gas	<u>25%</u> oil	%water	<u>65%</u> mud
Rec _____	Feet of _____	%gas	%oil	%water	%mud
Rec _____	Feet of _____	%gas	%oil	%water	%mud

Rec Total 125 BHT 119 Gravity — API RW _____ @ _____ °F Chlorides — ppm

(A) Initial Hydrostatic <u>1832</u>	<input checked="" type="checkbox"/> Test 1150	T-On Location <u>3:45</u>
(B) First Initial Flow <u>24</u>	<input checked="" type="checkbox"/> Jars 250	T-Started <u>4:24</u>
(C) First Final Flow <u>50</u>	<input checked="" type="checkbox"/> Safety Joint 75	T-Open <u>7:05</u>
(D) Initial Shut-In <u>1152</u>	<input checked="" type="checkbox"/> Circ Sub <u>N/C</u>	T-Pulled <u>9:05</u>
(E) Second Initial Flow <u>52</u>	<input type="checkbox"/> Hourly Standby _____	T-Out <u>11:03</u>
(F) Second Final Flow <u>75</u>	<input checked="" type="checkbox"/> Mileage <u>120 RT</u> 186	Comments _____
(G) Final Shut-In <u>1134</u>	<input type="checkbox"/> Sampler _____	
(H) Final Hydrostatic <u>1816</u>	<input type="checkbox"/> Straddle _____	<input type="checkbox"/> Ruined Shale Packer _____
	<input type="checkbox"/> Shale Packer _____	<input type="checkbox"/> Ruined Packer _____
Initial Open <u>30</u>	<input type="checkbox"/> Extra Packer _____	<input type="checkbox"/> Extra Copies _____
Initial Shut-In <u>30</u>	<input type="checkbox"/> Extra Recorder _____	Sub Total <u>0</u>
Final Flow <u>30</u>	<input type="checkbox"/> Day Standby _____	Total <u>1661</u>
Final Shut-In <u>30</u>	<input checked="" type="checkbox"/> Accessibility _____	MP/DST Disc't _____
	Sub Total <u>1661</u>	

Approved By [Signature] Our Representative Chuck Smith

Trilobite Testing Inc. shall not be liable for damaged of any kind of the property or personnel of the one for whom a test is made, or for any loss suffered or sustained, directly or indirectly, through the use of its equipment, or its statements or opinion concerning the results of any test, tools lost or damaged in the hole shall be paid for at cost by the party for whom the test is made.



TRILOBITE TESTING INC.

P.O. Box 1733 • Hays, Kansas 67601

Test Ticket

NO. 48452

Well Name & No. Valentine #1 Test No. 2 Date 9-17-12
 Company Palomino Petroleum Inc. Elevation _____ KB 2354 GL _____
 Address 4924 SE 84th St. Newton, KS 67114
 Co. Rep / Geo. Ryan Scib Rig Val#2
 Location: Sec. 7 Twp. 25w 15s Rge. 25w Co. Trego State KS

Interval Tested 3881-3935 Zone Tested Lansing
 Anchor Length 54 Drill Pipe Run 3887 Mud Wt. 9.3
 Top Packer Depth 3877 Drill Collars Run 0 Vis 52
 Bottom Packer Depth 3881 Wt. Pipe Run 0 WL 8.8
 Total Depth 3935 Chlorides 3900 ppm System LCM 1

Blow Description Surface blow died @ 9 min.
No return.
Surface blow died @ 7 min.
No return.

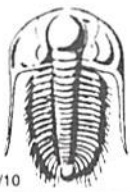
Rec	Feet of	%gas	%oil	%water	%mud
Rec <u>5</u>	Feet of <u>OCM</u>	%gas	<u>3</u> %oil	%water	<u>97</u> %mud
Rec _____	Feet of _____	%gas	%oil	%water	%mud
Rec _____	Feet of _____	%gas	%oil	%water	%mud
Rec _____	Feet of _____	%gas	%oil	%water	%mud

Rec Total 5 BHT 115 Gravity - API RW _____ @ _____ ° F Chlorides - ppm

(A) Initial Hydrostatic <u>1882</u>	<input checked="" type="checkbox"/> Test 1150	T-On Location <u>22:00</u>
(B) First Initial Flow <u>19</u>	<input checked="" type="checkbox"/> Jars 250	T-Started <u>22:22</u>
(C) First Final Flow <u>21</u>	<input checked="" type="checkbox"/> Safety Joint 75	T-Open <u>00:30</u>
(D) Initial Shut-In <u>88</u>	<input checked="" type="checkbox"/> Circ Sub <u>N/C</u>	T-Pulled <u>02:33</u>
(E) Second Initial Flow <u>21</u>	<input type="checkbox"/> Hourly Standby _____	T-Out <u>5:01</u>
(F) Second Final Flow <u>21</u>	<input checked="" type="checkbox"/> Mileage <u>120RT</u> 186	Comments _____
(G) Final Shut-In <u>43</u>	<input type="checkbox"/> Sampler _____	<input type="checkbox"/> Ruined Shale Packer _____
(H) Final Hydrostatic <u>1846</u>	<input type="checkbox"/> Straddle _____	<input type="checkbox"/> Ruined Packer _____
Initial Open <u>30</u>	<input checked="" type="checkbox"/> Shale Packer 250	<input type="checkbox"/> Extra Copies _____
Initial Shut-In <u>30</u>	<input type="checkbox"/> Extra Packer _____	Sub Total <u>0</u>
Final Flow <u>30</u>	<input type="checkbox"/> Extra Recorder _____	Total <u>1911</u>
Final Shut-In <u>30</u>	<input type="checkbox"/> Day Standby _____	MP/DST Disc't _____
	<input checked="" type="checkbox"/> Accessibility _____	
	Sub Total <u>1911</u>	

Approved By _____ Our Representative Chuck Smith

TriLOBITE Testing Inc. shall not be liable for damaged of any kind of the property or personnel of the one for whom a test is made, or for any loss suffered or sustained, directly or indirectly, through the use of its equipment, or its statements or opinion concerning the results of any test, tools lost or damaged in the hole shall be paid for at cost by the party for whom the test is made.



TRILOBITE TESTING INC.

P.O. Box 1733 • Hays, Kansas 67601

Test Ticket

NO. 48453

Well Name & No. Valentine #1 Test No. 3 Date 9-19-12
 Company Palomino Petroleum Inc. Elevation _____ KB 2354 GL _____
 Address 4924 SE 84th St. Newton, KS 67114
 Co. Rep / Geo. Ryan Scib Rig Val #2
 Location: Sec. 7 Twp. 15s Rge. 25W Co. Trego State KS

Interval Tested 4224 - 4298 Zone Tested Mississippian
 Anchor Length 77 Drill Pipe Run 4224 Mud Wt. 9.3
 Top Packer Depth 4220 Drill Collars Run 0 Vis 50
 Bottom Packer Depth 4224 Wt. Pipe Run 0 WL 8.4
 Total Depth 4298 Chlorides 3800 ppm System LCM 2"
 Blow Description 9" Blow
No return.
B.O.B. @ 45min.
Weak surface return died @ 15min.

Rec	Feet of	%gas	%oil	%water	%mud
Rec <u>31</u>	Feet of <u>60CM</u>	<u>10</u> %gas	<u>40</u> %oil	<u>50</u> %water	<u>50</u> %mud
Rec <u>122</u>	Feet of <u>60CM</u>	<u>10</u> %gas	<u>25</u> %oil	<u>65</u> %water	<u>65</u> %mud
Rec _____	Feet of _____	_____ %gas	_____ %oil	_____ %water	_____ %mud
Rec _____	Feet of _____	_____ %gas	_____ %oil	_____ %water	_____ %mud

Rec Total 153 BHT 125 Gravity - API RW _____ @ _____ °F Chlorides - ppm _____

(A) Initial Hydrostatic 2089 Test 1250 T-On Location 8:30
 (B) First Initial Flow 23 Jars 250 T-Started 9:07
 (C) First Final Flow 52 Safety Joint 75 T-Open 11:28
 (D) Initial Shut-In 915 Circ Sub NIC T-Pulled 14:29
 (E) Second Initial Flow 49 Hourly Standby _____ T-Out 16:29
 (F) Second Final Flow 79 Mileage 120RT 186 Comments _____
 (G) Final Shut-In 733 Sampler _____
 (H) Final Hydrostatic 2106 Straddle _____
 Shale Packer 250 Ruined Shale Packer _____
 Extra Packer _____ Ruined Packer _____
 Extra Recorder _____ Sub Total 116.67
 Day Standby 1d 3.5hrs Total 2127.67
 Accessibility _____ MP/DST Disc't _____
 Sub Total 2011

Approved By _____ Our Representative Chuck Amick

TriLOBite Testing Inc. shall not be liable for damaged of any kind of the property or personnel of the one for whom a test is made, or for any loss suffered or sustained, directly or indirectly, through the use of its equipment, or its statements or opinion concerning the results of any test, tools lost or damaged in the hole shall be paid for at cost by the party for whom the test is made.



TRILOBITE TESTING INC.

P.O. Box 1733 • Hays, Kansas 67601

Test Ticket

NO. 48454

Well Name & No. Valentine #1 Test No. 4 Date 9-20-12
 Company Palomino Petroleum Inc. Elevation _____ KB 2354 GL _____
 Address 4924 SE 84th St. Newton, KS 67114
 Co. Rep / Geo. Ryan Scib Rig Val#2
 Location: Sec. 7 Twp. 15s Rge. 25w Co. Trego State KS

Interval Tested 4296-4323 Zone Tested Mississippian
 Anchor Length 27 Drill Pipe Run 4295 Mud Wt. 9.3
 Top Packer Depth 4292 Drill Collars Run 0 Vis 59
 Bottom Packer Depth 4296 Wt. Pipe Run 0 WL 8.4
 Total Depth 4323 Chlorides 3800 ppm System LCM 1"
 Blow Description 14" Blow
No return
No blow
No return

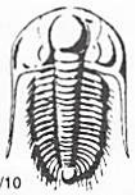
Rec	Feet of	%gas	%oil	%water	%mud
Rec <u>10</u>	Feet of <u>OCM</u>	%gas	<u>2</u> %oil	%water	<u>98</u> %mud
Rec _____	Feet of _____	%gas	%oil	%water	%mud
Rec _____	Feet of _____	%gas	%oil	%water	%mud
Rec _____	Feet of _____	%gas	%oil	%water	%mud

Rec Total 10 BHT 124 Gravity — API RW _____ @ _____ °F Chlorides — ppm

(A) Initial Hydrostatic 2137 Test 1250 T-On Location 00:50
 (B) First Initial Flow 19 Jars 250 T-Started 00:52
 (C) First Final Flow 21 Safety Joint 75 T-Open 3:15
 (D) Initial Shut-In 867 Circ Sub NIC T-Pulled 5:15
 (E) Second Initial Flow 22 Hourly Standby _____ T-Out 7:23
 (F) Second Final Flow 22 Mileage 120 186 Comments _____
 (G) Final Shut-In 567 Sampler _____
 (H) Final Hydrostatic 2022 Straddle _____
 Ruined Shale Packer _____
 Ruined Packer 320
 Initial Open 30 Extra Packer _____
 Initial Shut-In 30 Extra Recorder _____
 Final Flow 30 Day Standby _____
 Final Shut-In 30 Accessibility _____
 Sub Total 2011 Sub Total 320
 Total 2331 MP/DST Disc't _____

Approved By _____ Our Representative Chuck Amiel

TriLOBite Testing Inc. shall not be liable for damaged of any kind of the property or personnel of the one for whom a test is made, or for any loss suffered or sustained, directly or indirectly, through the use of its equipment, or its statements or opinion concerning the results of any test, tools lost or damaged in the hole shall be paid for at cost by the party for whom the test is made.



TRILOBITE TESTING INC.

P.O. Box 1733 • Hays, Kansas 67601

Test Ticket

NO. 47868

Well Name & No. Valentine #1 Test No. 5 Date 9-20-12
 Company Palomins Petroleum, Inc. Elevation 2364 KB 2354 GL
 Address 4924 SE 84th Street, Newton, KS, 67114
 Co. Rep / Geo. Ryan Strib Rig Val #2
 Location: Sec. 7 Twp. 15s Rge. 25w Co. Trego State KS

Interval Tested 4144 - 4220 Zone Tested Ft Scott
 Anchor Length 76' Drill Pipe Run 4136 Mud Wt. 9.4
 Top Packer Depth 4139 Drill Collars Run 0 Vis 60
 Bottom Packer Depth 4144 stl @ 4220 Wt. Pipe Run 0 WL 7.0
 Total Depth 4380 Chlorides 4100 ppm System LCM 2[#]
 Blow Description IIFP - Strong, BOB in 4 min.
ISI - Blowback Built to 3/4"
FFP - Strong, BOB in 5 min
FSI - Blowback Built to 1"

Rec	Feet of	%gas	%oil	%water	%mud
330	Gassy Muddy Oil	30	60	10	10
	1710 GIP				

Rec Total 330 BHT 122 Gravity 38 API RW @ °F Chlorides ppm

(A) Initial Hydrostatic 2110 Test 1250 T-On Location 23:09
 (B) First Initial Flow 61 Jars 250 T-Started 23:55
 (C) First Final Flow 117 Safety Joint 75 T-Open 3:12
 (D) Initial Shut-In 1326 Circ Sub T-Pulled 5:42
 (E) Second Initial Flow 132 Hourly Standby T-Out 8:33
 (F) Second Final Flow 170 Mileage 140.4 186 Comments
 (G) Final Shut-In 1326 Sampler
 (H) Final Hydrostatic 2067 Straddle 600 Ruined Shale Packer
 Shale Packer Ruined Packer
 Extra Packer Extra Copies
 Extra Recorder Sub Total 0
 Day Standby Total 2361
 Accessibility MP/DST Disc't
 Sub Total 2361

Approved By _____ Our Representative Jason Mc Simon Thank you

Trilobite Testing Inc. shall not be liable for damaged of any kind of the property or personnel of the one for whom a test is made, or for any loss suffered or sustained, directly or indirectly, through the use of its equipment, or its statements or opinion concerning the results of any test, tools lost or damaged in the hole shall be paid for at cost by the party for whom the test is made.