



James C. Musgrave
Petroleum Geologist
212 Main St. • P.O. Box 215 • Collins, KS 67525
(620) 588-4250

Home
(620) 387-3444

GEOLOGIST'S REPORT

DRILLING TIME AND SAMPLE LOG

COMPANY: Blueridge Petroleum Corp.

LEASE: Soeken #12

FIELD: Kaft. - Pius

LOCATION: NE-SW-SW-NW

SEC: 22 T17S R17E

COUNTY: Barton STATE: Kansas

CONTRACTOR: Petroland Drilling (Inc #2)

SPUD: 8-15-2012 COMP: 8-21-2012

RTD: 3365 LTD: 3364

MUD UP: 2594 TYPE MUD: chemical dispersed

SAMPLES SAVED FROM: 2500 TO 2500

DRILLING TIME KEPT FROM: 2500 TO 2500

SAMPLES EXAMINED FROM: 2500 TO 2500

GEOLOGICAL SUPERVISION FROM: 2740 TO 2740

GEOLOGIST ON WELL: Josh Austin, Jim Musgrave

FORMATION TOPS: LOG

SAMPLES: Brown 301

3027 (-1161)

3020 (-1174)

3272 (-1426)

3276 (-1430)

3365 (-1517)

3364 (-1518)

3364 (-1518)

3364 (-1518)

3364 (-1518)

3364 (-1518)

3364 (-1518)

3364 (-1518)

3364 (-1518)

ELEVATIONS

KB 1846

DF 1841

GI 1841

MEASUREMENTS ARE ALL FROM KB

PRODUCTION: CASING @ 209 SURFACE @ 209

EL ELECTRICAL SURVEYS BY SURVEYOR WELLS

SWITCHES, DIRECT CURRENT

SWITCHES, DIRECT CURRENT

SWITCHES, DIRECT CURRENT

SWITCHES, DIRECT CURRENT

SWITCHES, DIRECT CURRENT

SWITCHES, DIRECT CURRENT

SWITCHES, DIRECT CURRENT

SWITCHES, DIRECT CURRENT

SWITCHES, DIRECT CURRENT

SWITCHES, DIRECT CURRENT

SWITCHES, DIRECT CURRENT

SWITCHES, DIRECT CURRENT

SWITCHES, DIRECT CURRENT

SWITCHES, DIRECT CURRENT

SWITCHES, DIRECT CURRENT

SWITCHES, DIRECT CURRENT

SWITCHES, DIRECT CURRENT

SWITCHES, DIRECT CURRENT

SWITCHES, DIRECT CURRENT

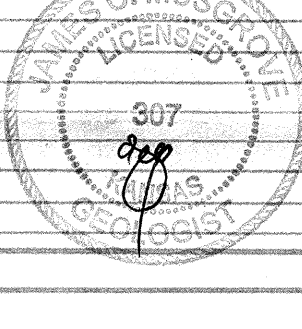
SWITCHES, DIRECT CURRENT

SWITCHES, DIRECT CURRENT

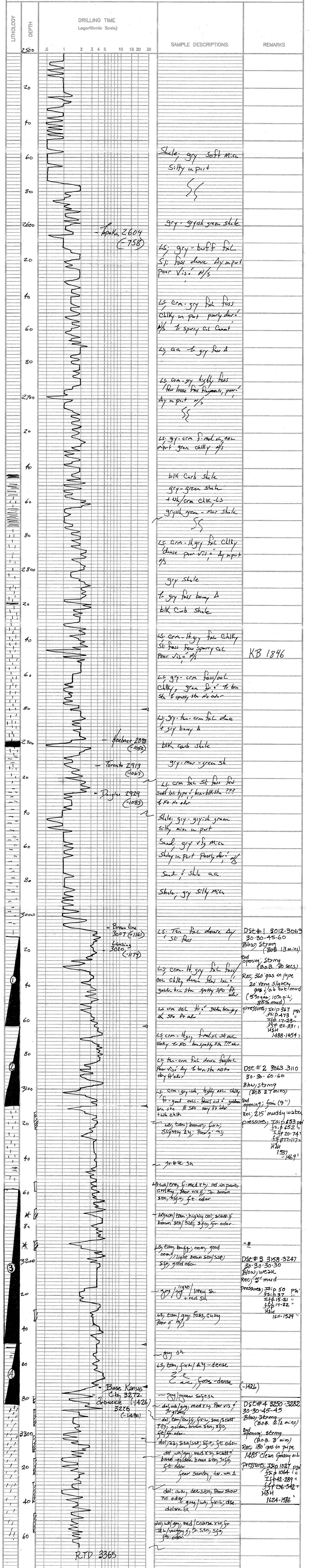
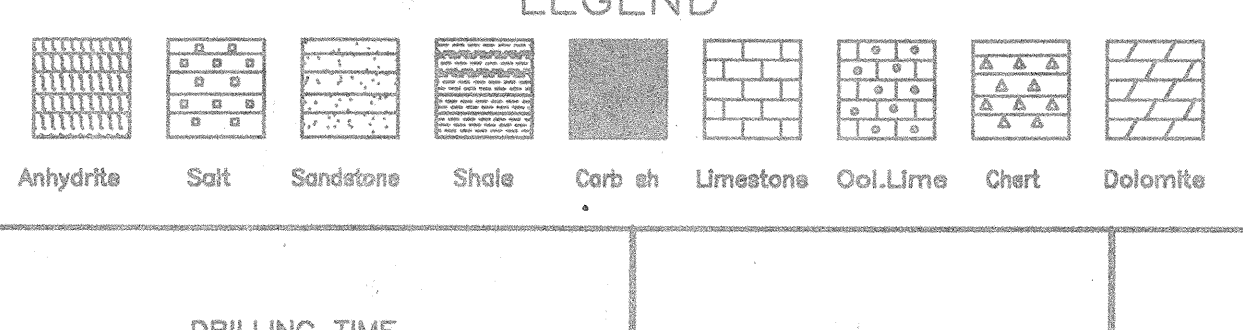
SWITCHES, DIRECT CURRENT

SWITCHES, DIRECT CURRENT

REMARKS: 5 1/2" production casing was set & cemented on the Soeken #12. Respectfully submitted, James C. Musgrave & Josh R. Austin, Petroleum Geologists



LEGEND



RTD 3365