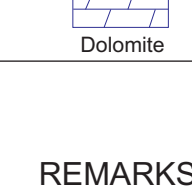


GEOLOGIST'S REPORT
DRILLING TIME AND SAMPLE LOG



Geologist on Well: Cristina Goodrich

LEASE: Legleiter 'A' #1-14

FIELD: 9907 FNL & 2310 FWL

LOCATION: 9907 FNL & 2310 FWL

SEC: 14 TWP: 16S RGE: 20W

COUNTRY: Kish STATE: Kansas

CONTRACTOR: Pickett Ritz #1

SUD: 08/01/2012 COMP: 08/10/2012

RTD: 4030' LTD: 4030'

MUD UP: TYPE MUD: CHEMICAL

SAMPLES SAVED FROM: 3450 TO: TD

DRILLING TIME KEPT FROM: 3100 TO: TD

SAMPLES EXAMINED FROM: 3450 TO: TD

GEOLOGICAL SUPERVISION FROM: 3400 - TD

REFERENCE WELL: Kern Pel; Mogn #1

Formation: Sample Tops E-log Tops

Anhydrite	1410 (+770)	1413 (+767)	Pos: +2
Heebner	3505 (-1325)	3506 (-1326)	+1
Lansing	3548 (-1368)	3549 (-1369)	flatt
RKC	3806 (-1728)	3806 (-1728)	flatt
Conglomerate	3908 (-1728)	3907 (-1727)	
Arbuckle	3955 (-1775)	3955 (-1775)	-45

Superior Well Services
Diamond Testing

CONDUCTOR: LTD

PRODUCTION: 4 1/2" 10.8# 580

ELECTRICAL SURVEYS

Surface 8.5# seal @ 1420'

Measurements Are All From Kelly Bushing

EL ELEVATIONS

KB: 2180

DF: 2178

GL: 2170

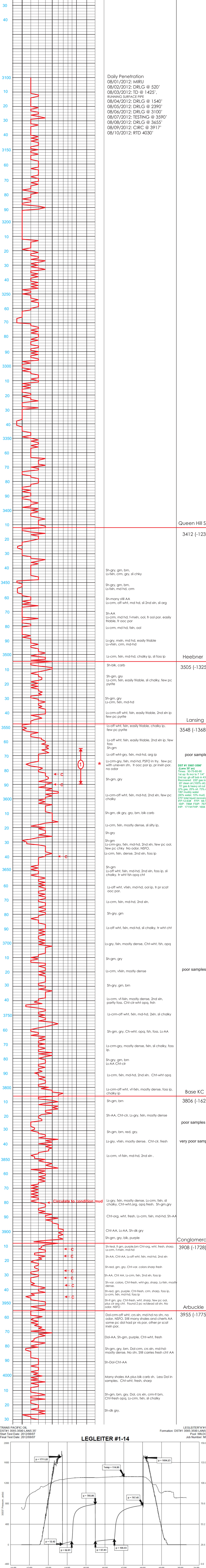
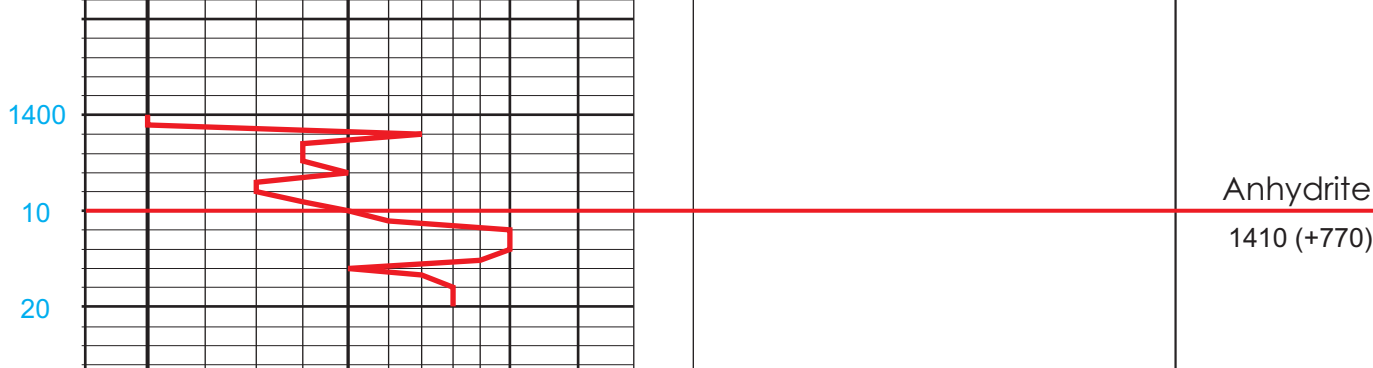
CASINGS

REMARKS

Respectfully Submitted,

Cristina Goodrich, Geologist

LEGEND



TRANS PACIFIC OIL
DST# 3565-3590 LANS 35'
Start Test Date: 2012/08/07
Final Test Date: 2012/08/07

LEGLEITER #1-14
Formation: DST#1 3565-3590 LANS 35'
Post: WILD CAT
Job Number: M366

LEGLEITER #1-14

