

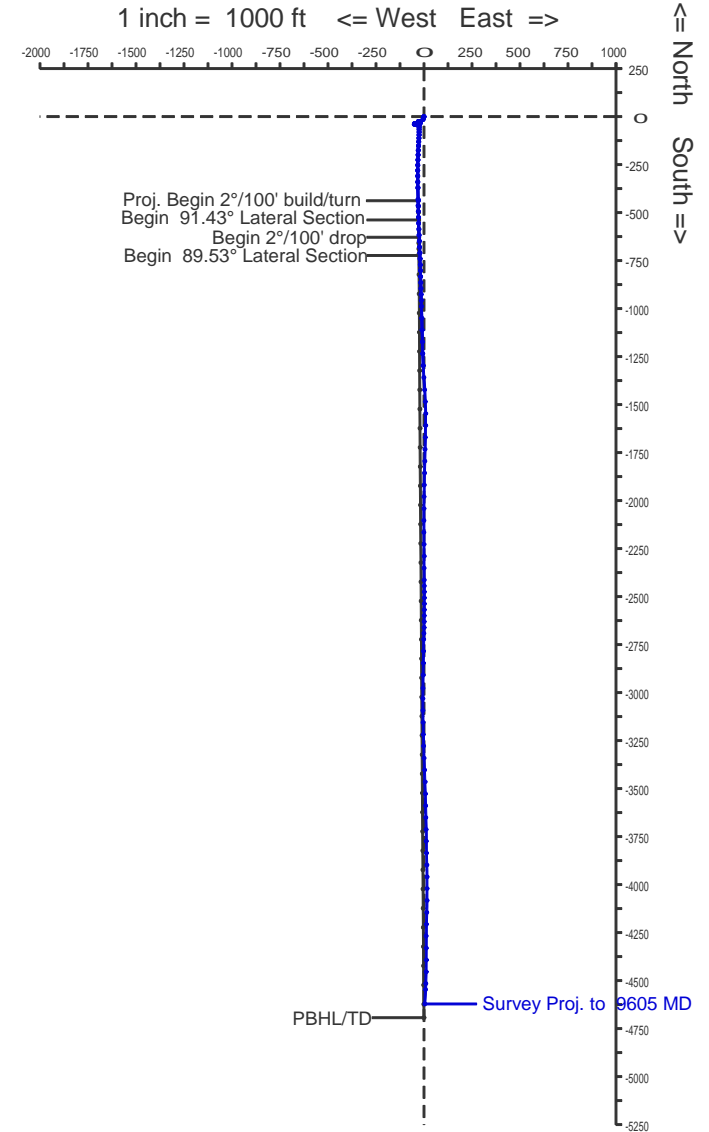
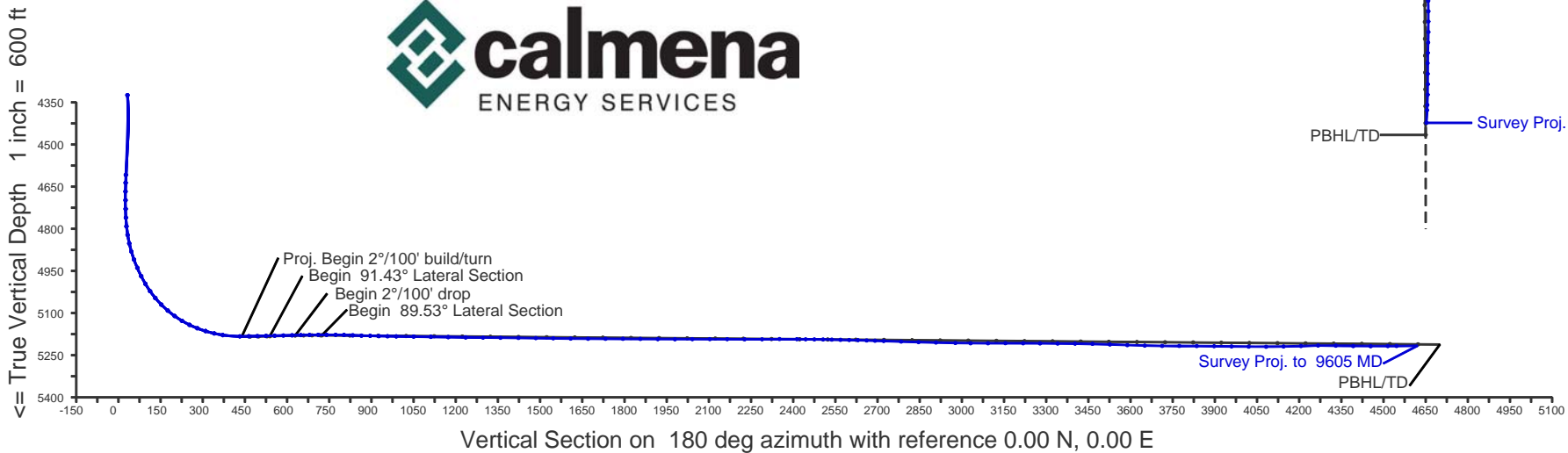
Osage Resources

Osage HC1

Barber County, Kansas

WELL PROFILE DATA rev3							
MD	Inc.	Azi.	TVD	N-S	E-W	DLS	Comment
5420	90.10	178.12	5184	-438	-29	0.00	Proj. Begin 2°/100' build/turn
5520	91.43	179.62	5182	-538	-27	2.00	Begin 91.43° Lateral Section
5610	91.43	179.62	5180	-628	-27	0.00	Begin 2°/100' drop
5705	89.53	179.62	5179	-723	-26	2.00	Begin 89.53° Lateral Section
9675	89.53	179.62	5212	-4693	0	0.00	PBHL/TD

WELL PROFILE DATA svys							
MD	Inc.	Azi.	TVD	N-S	E-W	DLS	Comment
9605	90.70	182.60	5216	-4621	5	0.00	Survey Proj. to 9605 MD



Calmena Energy Services

Company: Osage Resources, LLC
 Well: Osage HC1
 Location: Barber County, Kansas

Date: 29-Sep-2012
 Surveys
 Page 1
 Job# : 6725

MD (feet)	Inclination (degrees)	Azimuth (degrees)	TVD RKB (feet)	N/-S (feet)	E/-W (feet)	DLS (deg/100')	VS @ 180.00° Az (feet)	Comments
Surface Location								
0.00	0.00	0.00	0.00	0.00	0.00	0.00	0.00	
508.00	0.40	197.70	508.00	-1.69	-0.54	0.08	1.69	
973.00	3.10	198.00	972.74	-15.20	-4.92	0.58	15.20	
1445.00	2.90	236.50	1444.14	-33.93	-18.82	0.42	33.93	
1938.00	1.50	266.90	1936.78	-41.16	-35.66	0.36	41.16	
2399.00	0.80	265.50	2397.68	-41.74	-44.90	0.15	41.74	
2892.00	0.70	322.50	2890.64	-39.62	-50.16	0.15	39.62	
3356.00	1.20	59.00	3354.60	-34.87	-47.72	0.31	34.87	
3948.00	1.50	102.40	3946.45	-33.34	-34.84	0.18	33.34	
4326.00	0.80	8.00	4324.40	-31.79	-29.64	0.46	31.79	
4610.00	1.70	26.50	4608.33	-26.05	-27.49	0.34	26.05	
4638.00	1.40	17.80	4636.32	-25.36	-27.20	1.36	25.36	
4669.00	0.60	38.60	4667.31	-24.87	-26.98	2.79	24.87	
4700.00	0.80	197.30	4698.31	-24.95	-26.94	4.44	24.95	
4731.00	1.60	240.20	4729.30	-25.37	-27.38	3.71	25.37	
4762.00	2.20	182.70	4760.29	-26.18	-27.79	6.13	26.18	
4793.00	5.30	166.20	4791.22	-28.17	-27.47	10.49	28.17	
4824.00	9.60	171.50	4821.95	-32.11	-26.75	14.03	32.11	
4855.00	13.10	175.30	4852.34	-38.17	-26.08	11.54	38.17	
4885.00	16.60	177.80	4881.34	-45.85	-25.64	11.86	45.85	
4915.00	20.20	178.20	4909.80	-55.31	-25.31	12.01	55.31	
4946.00	23.30	179.20	4938.59	-66.79	-25.05	10.07	66.79	
4979.00	26.60	180.60	4968.50	-80.71	-25.04	10.16	80.71	
5010.00	30.30	181.70	4995.75	-95.47	-25.35	12.05	95.47	
5041.00	35.00	182.90	5021.85	-112.18	-26.03	15.30	112.18	
5072.00	39.80	183.40	5046.47	-130.97	-27.07	15.51	130.97	
5104.00	44.80	183.40	5070.13	-152.46	-28.34	15.63	152.46	
5135.00	49.60	182.70	5091.19	-175.17	-29.55	15.57	175.17	
5166.00	54.20	181.80	5110.31	-199.54	-30.50	15.01	199.54	
5197.00	59.10	181.50	5127.35	-225.42	-31.24	15.83	225.42	

Calmena Energy Services

Company: Osage Resources, LLC
 Well: Osage HC1
 Location: Barber County, Kansas

Date: 29-Sep-2012
 Surveys
 Page 2
 Job# : 6725

MD (feet)	Inclination (degrees)	Azimuth (degrees)	TVD RKB (feet)	N/-S (feet)	E/-W (feet)	DLS (deg/100')	VS @ 180.00° Az (feet)	Comments
5228.00	64.10	181.50	5142.09	-252.67	-31.96	16.13	252.67	
5258.00	69.20	180.60	5153.97	-280.20	-32.46	17.22	280.20	
5289.00	72.80	179.20	5164.06	-309.50	-32.40	12.37	309.50	
5321.00	76.60	179.00	5172.51	-340.36	-31.92	11.89	340.36	
5352.00	81.30	178.70	5178.45	-370.77	-31.30	15.19	370.77	
5413.00	90.30	179.70	5182.91	-431.53	-30.46	14.84	431.53	
5445.00	90.70	178.70	5182.63	-463.53	-30.01	3.37	463.53	
5475.00	91.10	178.30	5182.16	-493.52	-29.23	1.89	493.52	
5506.00	91.50	178.70	5181.46	-524.50	-28.42	1.82	524.50	
5537.00	91.70	178.30	5180.59	-555.47	-27.61	1.44	555.47	
5568.00	91.10	177.60	5179.83	-586.44	-26.50	2.97	586.44	
5599.00	91.10	177.80	5179.24	-617.41	-25.25	0.65	617.41	
5630.00	91.30	178.00	5178.59	-648.39	-24.12	0.91	648.39	
5661.00	90.80	177.30	5178.02	-679.35	-22.85	2.77	679.35	
5692.00	90.50	177.30	5177.67	-710.32	-21.39	0.97	710.32	
5722.00	90.30	177.40	5177.46	-740.29	-20.00	0.75	740.29	
5754.00	89.30	177.80	5177.57	-772.26	-18.66	3.37	772.26	
5784.00	88.20	178.50	5178.23	-802.23	-17.69	4.35	802.23	
5815.00	87.90	178.90	5179.28	-833.21	-16.99	1.61	833.21	
5846.00	88.30	179.00	5180.31	-864.19	-16.42	1.33	864.19	
5877.00	88.50	178.30	5181.17	-895.16	-15.69	2.35	895.16	
5908.00	88.70	178.30	5181.93	-926.14	-14.77	0.65	926.14	
5939.00	89.00	177.80	5182.55	-957.12	-13.72	1.88	957.12	
5970.00	89.50	178.50	5182.96	-988.10	-12.72	2.77	988.10	
6032.00	89.10	178.70	5183.72	-1050.08	-11.20	0.72	1050.08	
6093.00	89.40	178.30	5184.52	-1111.05	-9.60	0.82	1111.05	
6155.00	88.80	178.50	5185.49	-1173.02	-7.87	1.02	1173.02	
6217.00	89.00	178.20	5186.68	-1234.98	-6.09	0.58	1234.98	
6279.00	89.30	177.30	5187.60	-1296.92	-3.65	1.53	1296.92	
6341.00	89.80	176.60	5188.09	-1358.83	-0.36	1.39	1358.83	

Calmena Energy Services

Company: Osage Resources, LLC
 Well: Osage HC1
 Location: Barber County, Kansas

Date: 29-Sep-2012
 Surveys
 Page 3
 Job# : 6725

MD (feet)	Inclination (degrees)	Azimuth (degrees)	TVD RKB (feet)	N/-S (feet)	E/-W (feet)	DLS (deg/100')	VS @ 180.00° Az (feet)	Comments
6405.00	89.30	176.40	5188.59	-1422.71	3.55	0.84	1422.71	
6467.00	89.50	176.90	5189.24	-1484.60	7.17	0.87	1484.60	
6529.00	89.40	178.70	5189.83	-1546.55	9.55	2.91	1546.55	
6591.00	88.90	182.00	5190.75	-1608.53	9.18	5.38	1608.53	
6653.00	89.80	181.70	5191.46	-1670.50	7.17	1.53	1670.50	
6715.00	90.10	181.20	5191.51	-1732.48	5.61	0.94	1732.48	
6777.00	89.90	180.70	5191.51	-1794.47	4.58	0.87	1794.47	
6839.00	89.00	181.60	5192.11	-1856.45	3.33	2.05	1856.45	
6901.00	89.40	181.60	5192.97	-1918.42	1.60	0.65	1918.42	
6962.00	90.00	180.40	5193.29	-1979.41	0.54	2.20	1979.41	
7024.00	90.60	180.50	5192.97	-2041.41	0.05	0.98	2041.41	
7086.00	89.70	180.40	5192.80	-2103.40	-0.44	1.46	2103.40	
7148.00	89.60	179.70	5193.18	-2165.40	-0.49	1.14	2165.40	
7210.00	89.60	178.10	5193.62	-2227.39	0.70	2.58	2227.39	
7272.00	90.90	180.70	5193.34	-2289.38	1.35	4.69	2289.38	
7334.00	90.50	180.40	5192.59	-2351.37	0.75	0.81	2351.37	
7396.00	88.90	179.30	5192.91	-2413.37	0.92	3.13	2413.37	
7427.00	89.20	179.00	5193.43	-2444.36	1.38	1.37	2444.36	
7458.00	89.70	179.50	5193.72	-2475.35	1.78	2.28	2475.35	
7489.00	89.30	179.80	5193.99	-2506.35	1.97	1.61	2506.35	
7520.00	88.60	180.50	5194.56	-2537.35	1.89	3.19	2537.35	
7551.00	88.80	180.40	5195.27	-2568.34	1.65	0.72	2568.34	
7582.00	88.90	180.20	5195.89	-2599.33	1.48	0.72	2599.33	
7613.00	88.60	180.20	5196.56	-2630.32	1.38	0.97	2630.32	
7644.00	88.10	181.90	5197.46	-2661.30	0.81	5.71	2661.30	
7674.00	87.90	181.80	5198.50	-2691.27	-0.16	0.75	2691.27	
7705.00	88.00	181.40	5199.61	-2722.24	-1.02	1.33	2722.24	
7767.00	88.20	180.90	5201.67	-2784.19	-2.27	0.87	2784.19	
7829.00	88.50	180.90	5203.45	-2846.16	-3.24	0.48	2846.16	
7891.00	88.70	180.70	5204.97	-2908.13	-4.11	0.46	2908.13	

Calmena Energy Services

Company: Osage Resources, LLC
 Well: Osage HC1
 Location: Barber County, Kansas

Date: 29-Sep-2012
 Surveys
 Page 4
 Job# : 6725

MD (feet)	Inclination (degrees)	Azimuth (degrees)	TVD RKB (feet)	N/-S (feet)	E/-W (feet)	DLS (deg/100')	VS @ 180.00° Az (feet)	Comments
7960.00	88.50	180.90	5206.65	-2977.11	-5.07	0.41	2977.11	
8014.00	89.60	180.00	5207.55	-3031.09	-5.49	2.63	3031.09	
8076.00	90.30	179.50	5207.60	-3093.09	-5.22	1.39	3093.09	
8138.00	90.50	179.30	5207.17	-3155.09	-4.57	0.46	3155.09	
8201.00	89.10	178.60	5207.39	-3218.08	-3.42	2.48	3218.08	
8261.00	89.60	178.10	5208.07	-3278.05	-1.69	1.18	3278.05	
8324.00	89.50	177.70	5208.57	-3341.00	0.62	0.65	3341.00	
8386.00	89.80	177.20	5208.94	-3402.94	3.37	0.94	3402.94	
8448.00	89.00	177.90	5209.59	-3464.88	6.02	1.71	3464.88	
8510.00	87.00	178.80	5211.76	-3526.81	7.81	3.54	3526.81	
8572.00	88.50	179.30	5214.19	-3588.75	8.84	2.55	3588.75	
8634.00	88.10	178.80	5216.03	-3650.72	9.86	1.03	3650.72	
8696.00	90.10	179.00	5217.00	-3712.69	11.05	3.24	3712.69	
8757.00	89.70	179.30	5217.11	-3773.69	11.96	0.82	3773.69	
8819.00	89.60	178.60	5217.49	-3835.68	13.09	1.14	3835.68	
8881.00	89.30	177.90	5218.08	-3897.64	14.99	1.23	3897.64	
8943.00	89.40	180.00	5218.79	-3959.63	16.12	3.39	3959.63	
9004.00	89.20	180.20	5219.53	-4020.62	16.02	0.46	4020.62	
9066.00	90.10	180.00	5219.91	-4082.62	15.91	1.49	4082.62	
9128.00	91.40	182.30	5219.10	-4144.60	14.67	4.26	4144.60	
9190.00	91.90	181.40	5217.32	-4206.54	12.66	1.66	4206.54	
9251.00	91.30	180.70	5215.61	-4267.50	11.55	1.51	4267.50	
9314.00	88.20	178.60	5215.89	-4330.49	11.93	5.94	4330.49	
9376.00	88.60	180.00	5217.62	-4392.46	12.69	2.35	4392.46	
9438.00	90.40	181.60	5218.16	-4454.45	11.82	3.88	4454.45	
9499.00	90.70	182.50	5217.57	-4515.40	9.64	1.56	4515.40	
9530.00	90.70	182.60	5217.20	-4546.37	8.26	0.32	4546.37	
9605.00	90.70	182.60	5216.28	-4621.29	4.86	0.00	4621.29	Survey proj