



**TRILOBITE TESTING, INC.**

# DRILL STEM TEST REPORT

Mikol Oil, LLC  
 1407 Washington Cir.  
 Hays KS, 67601  
 ATTN: Bob Stolzle

**33-10s-17w Rooks KS**  
**Schrandt # 1-33**  
 Job Ticket: 49473      **DST#: 3**  
 Test Start: 2012.09.13 @ 09:13:00

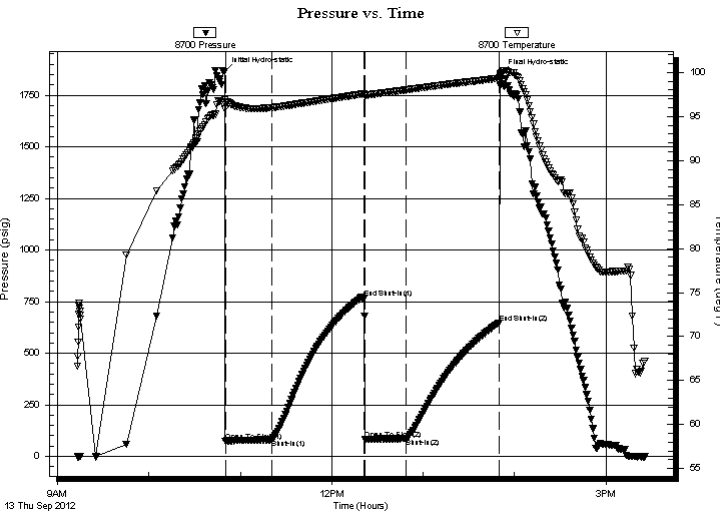
## GENERAL INFORMATION:

Formation: **Conglomerate**  
 Deviated: No Whipstock: ft (KB)  
 Time Tool Opened: 10:50:00  
 Time Test Ended: 15:26:00  
 Interval: **3544.00 ft (KB) To 3660.00 ft (KB) (TVD)**  
 Total Depth: 3660.00 ft (KB) (TVD)  
 Hole Diameter: 7.88 inches Hole Condition: Fair  
 Test Type: Conventional Bottom Hole (Reset)  
 Tester: Cody Bloedorn  
 Unit No: 42  
 Reference Elevations: 2082.00 ft (KB)  
 2077.00 ft (CF)  
 KB to GR/CF: 5.00 ft

## Serial #: 8700 Outside

Press @ Run Depth: 85.60 psig @ 3645.00 ft (KB)      Capacity: 8000.00 psig  
 Start Date: 2012.09.13      End Date: 2012.09.13      Last Calib.: 2012.09.13  
 Start Time: 09:13:05      End Time: 15:25:59      Time On Btm: 2012.09.13 @ 10:49:30  
 Time Off Btm: 2012.09.13 @ 13:51:00

TEST COMMENT: 30 - IF- 1/2" blow, Dying  
 60 - IS- No blow back.  
 30 - FF- No blow  
 60 - FS- No blow back.



## PRESSURE SUMMARY

Time (Min.)	Pressure (psig)	Temp (deg F)	Annotation
0	1864.86	96.85	Initial Hydro-static
1	72.72	95.90	Open To Flow (1)
31	80.85	96.00	Shut-In(1)
92	765.50	97.56	End Shut-In(1)
93	83.08	97.44	Open To Flow (2)
120	85.60	98.02	Shut-In(2)
181	647.29	99.35	End Shut-In(2)
182	1855.09	99.79	Final Hydro-static

## Recovery

Length (ft)	Description	Volume (bbl)
30.00	Mud - w Show of oil, 100%M	0.15

## Gas Rates

Choke (inches)	Pressure (psig)	Gas Rate (Mcf/d)

\* Recovery from multiple tests



**TRILOBITE  
TESTING, INC.**

# DRILL STEM TEST REPORT

**FLUID SUMMARY**

Mikol Oil, LLC

**33-10s-17w Rooks KS**

1407 Washington Cir.  
Hays KS, 67601

**Schrandt # 1-33**

Job Ticket: 49473

**DST#: 3**

ATTN: Bob Stolzle

Test Start: 2012.09.13 @ 09:13:00

## Mud and Cushion Information

Mud Type: Gel Chem

Cushion Type:

Oil API:

deg API

Mud Weight: 9.00 lb/gal

Cushion Length:

ft

Water Salinity:

ppm

Viscosity: 54.00 sec/qt

Cushion Volume:

bbbl

Water Loss: 7.60 in<sup>3</sup>

Gas Cushion Type:

Resistivity: ohm.m

Gas Cushion Pressure:

psig

Salinity: 5000.00 ppm

Filter Cake: inches

## Recovery Information

Recovery Table

Length ft	Description	Volume bbl
30.00	Mud - w Show of oil, 100%M	0.148

Total Length: 30.00 ft      Total Volume: 0.148 bbl

Num Fluid Samples: 0

Num Gas Bombs: 0

Serial #:

Laboratory Name:

Laboratory Location:

Recovery Comments:

### Pressure vs. Time

