

**T34S, R7W, 6th P.M.**

**SGOMI**

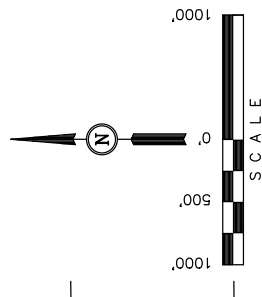
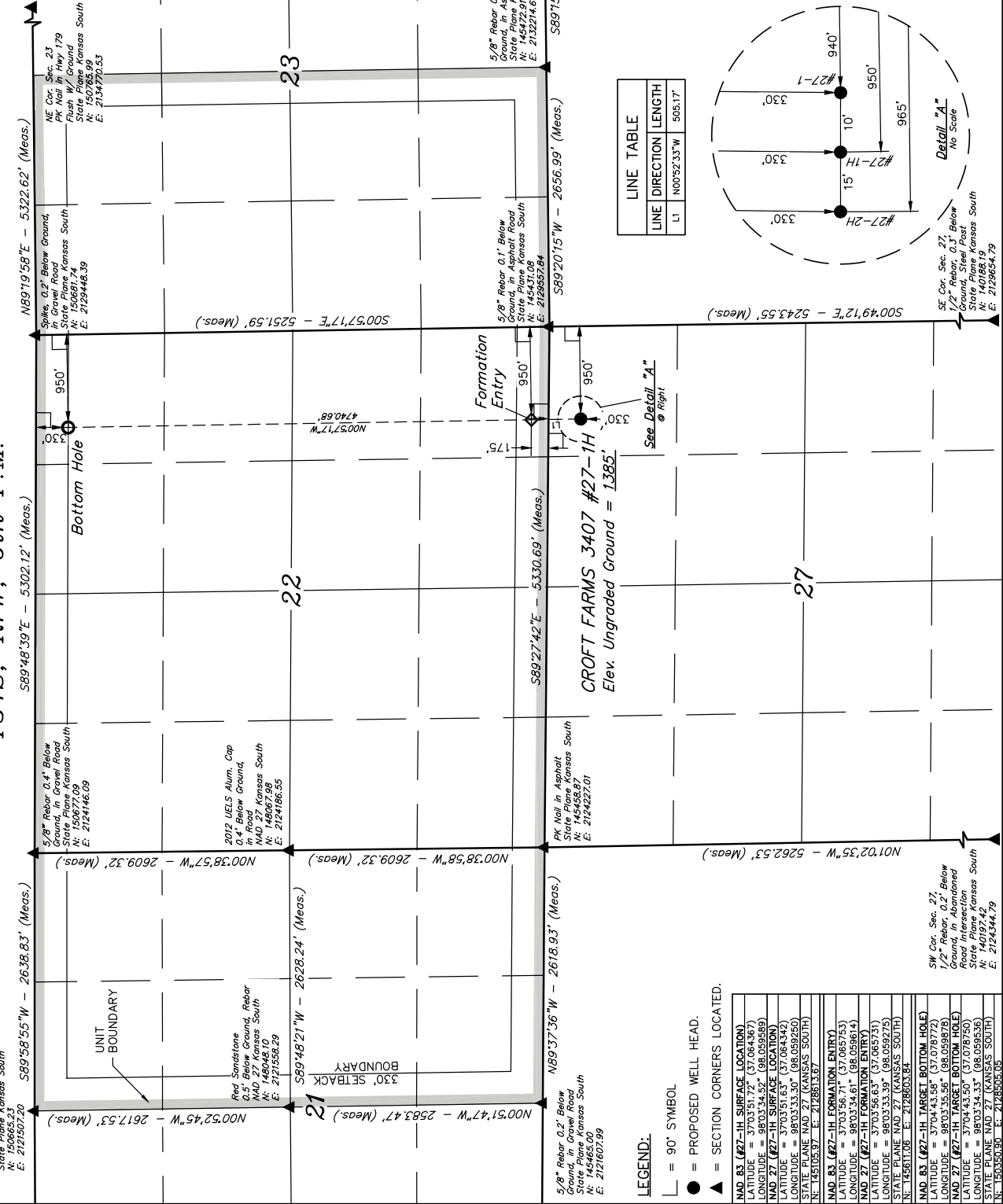
Well location, CROFT FARMS 3407 #27-1H, located as shown in the NE 1/4 NE 1/4 of Section 27, T34S, R7W, 6th P.M., Harper County, Kansas.

**BASIS OF ELEVATION**

SPOT ELEVATION LOCATED AT THE NORTHEAST CORNER OF SECTION 22, T33S, R7W, 6th P.M. TAKEN FROM THE ANTHONY, QUADRANGLE, KANSAS, HARPER COUNTY, 7.5 MINUTE QUAD (TOPOGRAPHIC MAP) PUBLISHED BY THE UNITED STATES DEPARTMENT OF THE INTERIOR, GEOLOGICAL SURVEY. SAID ELEVATION IS MARKED AS BEING 1348 FEET.

**BASIS OF BEARINGS**

BASIS OF BEARINGS IS A G.P.S. OBSERVATION.



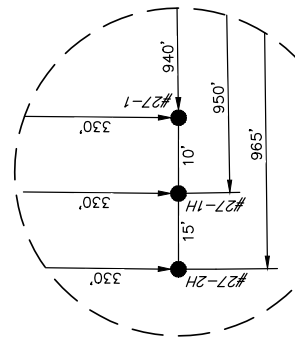
PK Nail in Hwy 179 Intersection  
 Flush W/ Ground  
 State Plane, Kansas South  
 N: 145472.91  
 E: 2134670.27

LINE	DIRECTION	LENGTH
L1	N00°52'33"W	906.17'

CERTIFICATE OF SURVEY  
 JUSTIN  
 REGISTERED LAND SURVEYOR  
 REGISTRATION NO. 1851  
 STATE OF KANSAS SURVEYOR 2012-12

THIS IS TO CERTIFY THAT THE ABOVE WAS PREPARED FROM FIELD NOTES OF ACTUAL SURVEYS MADE BY ME OR UNDER MY SUPERVISION AND THAT THE SAME ARE TRUE AND CORRECT TO THE BEST OF MY KNOWLEDGE AND BELIEF.

REVISED: 10-24-12 C.A.G.  
 REVISED: 10-22-12 C.A.G.  
 REVISED: 04-12-12



**UNTAH ENGINEERING & LAND SURVEYING**  
 85 SOUTH 200 EAST - VERNAL, UTAH 84078  
 (435) 789-1017

SCALE	1" = 1000'	DATE SURVEYED:	04-05-12	DATE DRAWN:	04-09-12
PARTY	L.S. J.P. C.C.	REFERENCES	G.L.O. PLAT		
WEATHER	WARM	FILE			SCOMI

- LEGEND:**
- = 90° SYMBOL
  - = PROPOSED WELL HEAD.
  - ▲ = SECTION CORNERS LOCATED.

POINT	BEARING	DISTANCE	COORDINATES
NAD 83 (#27-1H SURFACE LOCATION)			
LATITUDE		37°03'51.72"	(37.064367)
LONGITUDE		98°03'34.52"	(98.059589)
NAD 27 (#27-1H SURFACE LOCATION)			
LATITUDE		37°03'51.63"	(37.064342)
LONGITUDE		98°03'33.50"	(98.059250)
STATE PLANE NAD 27 (KANSAS SOUTH)			
LATITUDE		37°03'51.63"	(37.064342)
LONGITUDE		98°03'33.50"	(98.059250)
NAD 83 (#27-1H FORMATION ENTRY)			
LATITUDE		37°03'56.63"	(37.065731)
LONGITUDE		98°03'34.61"	(98.059614)
NAD 27 (#27-1H FORMATION ENTRY)			
LATITUDE		37°03'56.63"	(37.065731)
LONGITUDE		98°03'33.39"	(98.059275)
STATE PLANE NAD 27 (KANSAS SOUTH)			
LATITUDE		37°03'56.63"	(37.065731)
LONGITUDE		98°03'33.39"	(98.059275)
NAD 83 (#27-1H TARGET BOTTOM HOLE)			
LATITUDE		37°04'43.58"	(37.076772)
LONGITUDE		98°03'35.56"	(98.059878)
NAD 27 (#27-1H TARGET BOTTOM HOLE)			
LATITUDE		37°04'43.58"	(37.076772)
LONGITUDE		98°03'34.33"	(98.059536)
STATE PLANE NAD 27 (KANSAS SOUTH)			
LATITUDE		37°04'43.58"	(37.076772)
LONGITUDE		98°03'34.33"	(98.059536)
STATE PLANE NAD 27 (KANSAS SOUTH)			
LATITUDE		37°04'43.58"	(37.076772)
LONGITUDE		98°03'34.33"	(98.059536)

SW Cor. Sec. 27,  
 T22R, R7W, 6th P.M.  
 Ground, Steel Post.  
 Road Intersection  
 State Plane, Kansas South  
 N: 1401977.42  
 E: 21246447.9

SE Cor. Sec. 27,  
 T22R, R7W, 6th P.M.  
 Ground, Steel Post.  
 State Plane, Kansas South  
 N: 140188.19  
 E: 2123654.19

NE Cor. Sec. 27,  
 T22R, R7W, 6th P.M.  
 Flush W/ Ground  
 State Plane, Kansas South  
 N: 150765.99  
 E: 2104770.33

NE Cor. Sec. 23,  
 T22R, R7W, 6th P.M.  
 PK Nail in Hwy 179  
 State Plane, Kansas South  
 N: 150765.99  
 E: 2104770.33

5/8" Rebar 0.3" High, Fence Post  
 State Plane, Kansas South  
 E: 2121507.20

5/8" Rebar 0.4" Below  
 Ground, in Gravel Road  
 State Plane, Kansas South  
 N: 150817.08  
 E: 2124446.09

2012 UELS Alum. Cap  
 0.4" Below Ground,  
 State Plane, Kansas South  
 NAD 27 (KANSAS SOUTH)  
 N: 148067.98  
 E: 2124186.55

5/8" Rebar 0.1" Below  
 Ground, in Asphalt Road  
 State Plane, Kansas South  
 N: 145431.09  
 E: 2128957.84

5/8" Rebar 0.3" Below  
 Ground, in Asphalt Road  
 State Plane, Kansas South  
 N: 145472.91  
 E: 2132714.60

PK Nail in Asphalt  
 State Plane, Kansas South  
 E: 2124227.01

SW Cor. Sec. 27,  
 T22R, R7W, 6th P.M.  
 Ground, Steel Post.  
 Road Intersection  
 State Plane, Kansas South  
 N: 1401977.42  
 E: 21246447.9