

T34S, R7W, 6th P.M.

SGOMI

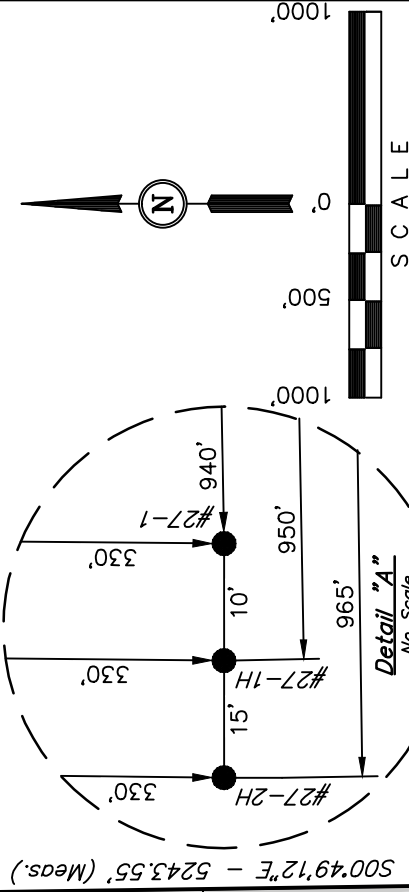
Well location, CROFT FARMS 3407 #27-2H, located as shown in the NE 1/4 NE 1/4 of Section 27, T34S, R7W, 6th P.M., Harper County, Kansas.

BASIS OF ELEVATION

SPOT ELEVATION LOCATED AT THE NORTHEAST CORNER OF SECTION 22, T33S, R7W, 6th P.M. TAKEN FROM THE ANTHONY, QUADRANGLE, KANSAS, HARPER COUNTY, 7.5 MINUTE QUAD (TOPOGRAPHIC MAP) PUBLISHED BY THE UNITED STATES DEPARTMENT OF THE INTERIOR, GEOLOGICAL SURVEY. SAID ELEVATION IS MARKED AS BEING 1348 FEET.

BASIS OF BEARINGS

BASIS OF BEARINGS IS A G.P.S. OBSERVATION.



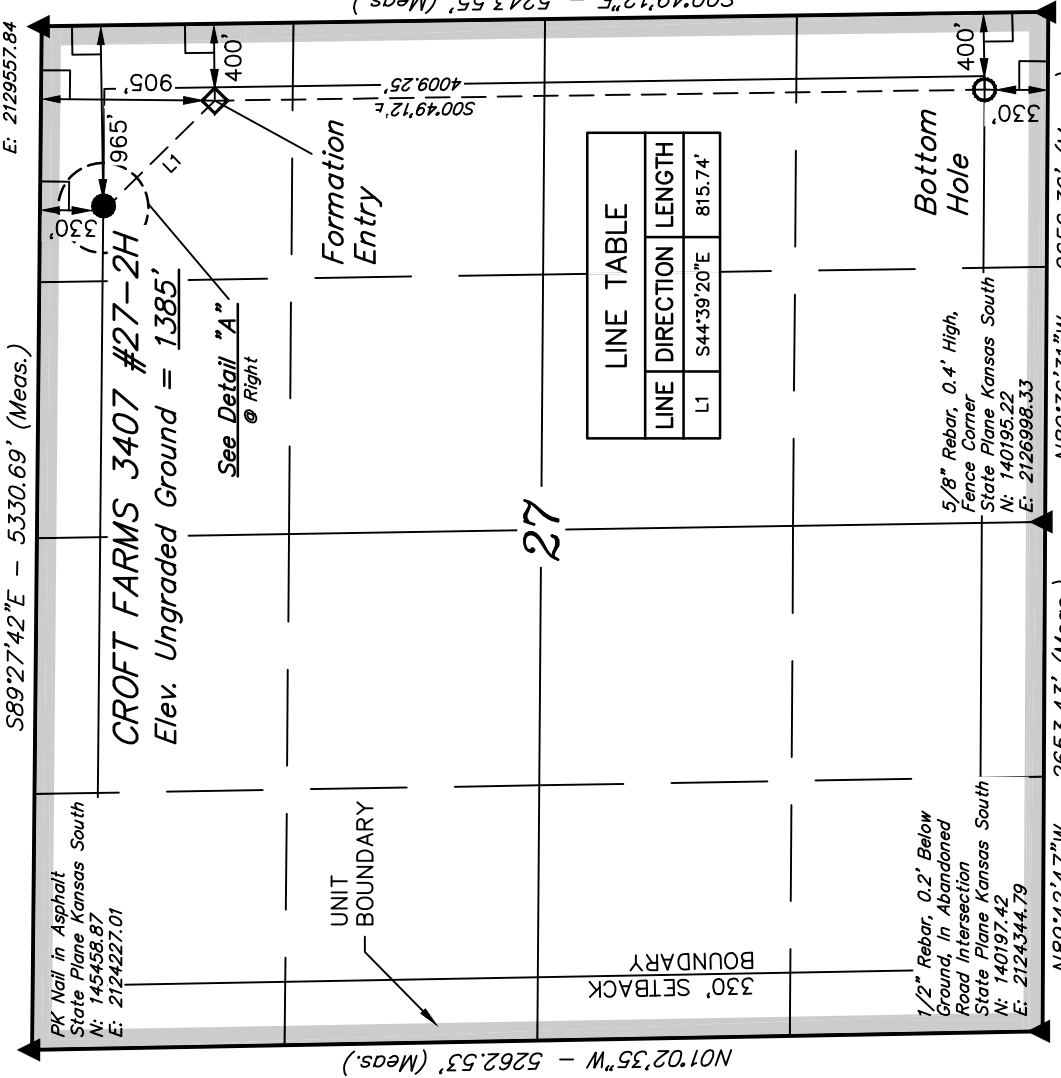
CERTIFICATE
 THIS IS TO CERTIFY THAT THE ABOVE PLAT WAS PREPARED FROM FIELD NOTES OF ACTUAL SURVEYS MADE BY ME OR UNDER MY SUPERVISION AND THAT THE SAME ARE TRUE AND CORRECT TO THE BEST OF MY KNOWLEDGE AND BELIEF.
 REGISTERED LAND SURVEYOR
 REGISTRATION NO. N 1581
 STATE OF KANSAS
 J.P. C.A.G.
 SURVEYED 1-1-12

REVISED: 10-24-12 C.A.G.

UNTAH ENGINEERING & LAND SURVEYING
 85 SOUTH 200 EAST - VERNAL, UTAH 84078
 (435) 789-1017

SCALE	DATE SURVEYED:	DATE DRAWN:
1" = 1000'	04-05-12	10-22-12
PARTY	REFERENCES	
L.S. J.P. C.A.G.	G.L.O. PLAT	
WEATHER	FILE	
WARM	SGOMI	

5/8" Rebar, 0.1' Below Ground, in Asphalt Road State Plane Kansas South N: 145431.08 E: 2129557.84



LINE TABLE	
LINE	DIRECTION LENGTH
L1	S44°39'20"E 815.74'

1/2" Rebar, 0.3' Below Ground, Steel Post State Plane Kansas South N: 140188.19 E: 2129654.79

5/8" Rebar, 0.4' High, Fence Corner State Plane Kansas South N: 140195.22 E: 2126998.33

1/2" Rebar, 0.2' Below Ground, in Abandoned Road Intersection State Plane Kansas South N: 2124344.79 E: 2129248.58

500°49'12"E - 5243.55' (Meas.)
 500°49'12"E - 5243.55' (Meas.)
 4009.25'

589°27'42"E - 5330.69' (Meas.)
 589°27'42"E - 5330.69' (Meas.)
 500°49'12"E - 5243.55' (Meas.)
 500°49'12"E - 5243.55' (Meas.)

LINE	DIRECTION	LENGTH	COORDINATES
NAD 83 (#27-2H TARGET BOTTOM HOLE)			
	LATITUDE = 37°03'06.34"	(37.051761)	
	LONGITUDE = 98°03'26.96"	(98.057489)	
NAD 27 (#27-2H TARGET BOTTOM HOLE)			
	LATITUDE = 37°03'06.26"	(37.051739)	
	LONGITUDE = 98°03'25.73"	(98.057147)	
STATE PLANE NAD 27 (KANSAS SOUTH)			
	LATITUDE = 37°03'06.26"	(37.051739)	
	LONGITUDE = 98°03'26.41"	(98.057336)	
STATE PLANE NAD 27 (KANSAS SOUTH)			
	LATITUDE = 37°03'06.26"	(37.051739)	
	LONGITUDE = 98°03'26.41"	(98.057336)	
STATE PLANE NAD 27 (KANSAS SOUTH)			
	LATITUDE = 37°03'06.26"	(37.051739)	
	LONGITUDE = 98°03'26.41"	(98.057336)	
STATE PLANE NAD 27 (KANSAS SOUTH)			
	LATITUDE = 37°03'06.26"	(37.051739)	
	LONGITUDE = 98°03'26.41"	(98.057336)	
STATE PLANE NAD 27 (KANSAS SOUTH)			
	LATITUDE = 37°03'06.26"	(37.051739)	
	LONGITUDE = 98°03'26.41"	(98.057336)	
STATE PLANE NAD 27 (KANSAS SOUTH)			
	LATITUDE = 37°03'06.26"	(37.051739)	
	LONGITUDE = 98°03'26.41"	(98.057336)	
STATE PLANE NAD 27 (KANSAS SOUTH)			
	LATITUDE = 37°03'06.26"	(37.051739)	
	LONGITUDE = 98°03'26.41"	(98.057336)	
STATE PLANE NAD 27 (KANSAS SOUTH)			
	LATITUDE = 37°03'06.26"	(37.051739)	
	LONGITUDE = 98°03'26.41"	(98.057336)	
STATE PLANE NAD 27 (KANSAS SOUTH)			
	LATITUDE = 37°03'06.26"	(37.051739)	
	LONGITUDE = 98°03'26.41"	(98.057336)	
STATE PLANE NAD 27 (KANSAS SOUTH)			
	LATITUDE = 37°03'06.26"	(37.051739)	
	LONGITUDE = 98°03'26.41"	(98.057336)	
STATE PLANE NAD 27 (KANSAS SOUTH)			
	LATITUDE = 37°03'06.26"	(37.051739)	
	LONGITUDE = 98°03'26.41"	(98.057336)	
STATE PLANE NAD 27 (KANSAS SOUTH)			
	LATITUDE = 37°03'06.26"	(37.051739)	
	LONGITUDE = 98°03'26.41"	(98.057336)	
STATE PLANE NAD 27 (KANSAS SOUTH)			
	LATITUDE = 37°03'06.26"	(37.051739)	
	LONGITUDE = 98°03'26.41"	(98.057336)	
STATE PLANE NAD 27 (KANSAS SOUTH)			
	LATITUDE = 37°03'06.26"	(37.051739)	
	LONGITUDE = 98°03'26.41"	(98.057336)	
STATE PLANE NAD 27 (KANSAS SOUTH)			
	LATITUDE = 37°03'06.26"	(37.051739)	
	LONGITUDE = 98°03'26.41"	(98.057336)	
STATE PLANE NAD 27 (KANSAS SOUTH)			
	LATITUDE = 37°03'06.26"	(37.051739)	
	LONGITUDE = 98°03'26.41"	(98.057336)	
STATE PLANE NAD 27 (KANSAS SOUTH)			
	LATITUDE = 37°03'06.26"	(37.051739)	
	LONGITUDE = 98°03'26.41"	(98.057336)	
STATE PLANE NAD 27 (KANSAS SOUTH)			
	LATITUDE = 37°03'06.26"	(37.051739)	
	LONGITUDE = 98°03'26.41"	(98.057336)	
STATE PLANE NAD 27 (KANSAS SOUTH)			
	LATITUDE = 37°03'06.26"	(37.051739)	
	LONGITUDE = 98°03'26.41"	(98.057336)	
STATE PLANE NAD 27 (KANSAS SOUTH)			
	LATITUDE = 37°03'06.26"	(37.051739)	
	LONGITUDE = 98°03'26.41"	(98.057336)	
STATE PLANE NAD 27 (KANSAS SOUTH)			
	LATITUDE = 37°03'06.26"	(37.051739)	
	LONGITUDE = 98°03'26.41"	(98.057336)	
STATE PLANE NAD 27 (KANSAS SOUTH)			
	LATITUDE = 37°03'06.26"	(37.051739)	
	LONGITUDE = 98°03'26.41"	(98.057336)	
STATE PLANE NAD 27 (KANSAS SOUTH)			
	LATITUDE = 37°03'06.26"	(37.051739)	
	LONGITUDE = 98°03'26.41"	(98.057336)	
STATE PLANE NAD 27 (KANSAS SOUTH)			
	LATITUDE = 37°03'06.26"	(37.051739)	
	LONGITUDE = 98°03'26.41"	(98.057336)	
STATE PLANE NAD 27 (KANSAS SOUTH)			
	LATITUDE = 37°03'06.26"	(37.051739)	
	LONGITUDE = 98°03'26.41"	(98.057336)	
STATE PLANE NAD 27 (KANSAS SOUTH)			
	LATITUDE = 37°03'06.26"	(37.051739)	
	LONGITUDE = 98°03'26.41"	(98.057336)	
STATE PLANE NAD 27 (KANSAS SOUTH)			
	LATITUDE = 37°03'06.26"	(37.051739)	
	LONGITUDE = 98°03'26.41"	(98.057336)	
STATE PLANE NAD 27 (KANSAS SOUTH)			
	LATITUDE = 37°03'06.26"	(37.051739)	
	LONGITUDE = 98°03'26.41"	(98.057336)	
STATE PLANE NAD 27 (KANSAS SOUTH)			
	LATITUDE = 37°03'06.26"	(37.051739)	
	LONGITUDE = 98°03'26.41"	(98.057336)	
STATE PLANE NAD 27 (KANSAS SOUTH)			
	LATITUDE = 37°03'06.26"	(37.051739)	
	LONGITUDE = 98°03'26.41"	(98.057336)	
STATE PLANE NAD 27 (KANSAS SOUTH)			
	LATITUDE = 37°03'06.26"	(37.051739)	
	LONGITUDE = 98°03'26.41"	(98.057336)	
STATE PLANE NAD 27 (KANSAS SOUTH)			
	LATITUDE = 37°03'06.26"	(37.051739)	
	LONGITUDE = 98°03'26.41"	(98.057336)	
STATE PLANE NAD 27 (KANSAS SOUTH)			
	LATITUDE = 37°03'06.26"	(37.051739)	
	LONGITUDE = 98°03'26.41"	(98.057336)	
STATE PLANE NAD 27 (KANSAS SOUTH)			
	LATITUDE = 37°03'06.26"	(37.051739)	
	LONGITUDE = 98°03'26.41"	(98.057336)	
STATE PLANE NAD 27 (KANSAS SOUTH)			
	LATITUDE = 37°03'06.26"	(37.051739)	
	LONGITUDE = 98°03'26.41"	(98.057336)	
STATE PLANE NAD 27 (KANSAS SOUTH)			
	LATITUDE = 37°03'06.26"	(37.051739)	
	LONGITUDE = 98°03'26.41"	(98.057336)	
STATE PLANE NAD 27 (KANSAS SOUTH)			
	LATITUDE = 37°03'06.26"	(37.051739)	
	LONGITUDE = 98°03'26.41"	(98.057336)	
STATE PLANE NAD 27 (KANSAS SOUTH)			
	LATITUDE = 37°03'06.26"	(37.051739)	
	LONGITUDE = 98°03'26.41"	(98.057336)	
STATE PLANE NAD 27 (KANSAS SOUTH)			
	LATITUDE = 37°03'06.26"	(37.051739)	
	LONGITUDE = 98°03'26.41"	(98.057336)	
STATE PLANE NAD 27 (KANSAS SOUTH)			
	LATITUDE = 37°03'06.26"	(37.051739)	
	LONGITUDE = 98°03'26.41"	(98.057336)	
STATE PLANE NAD 27 (KANSAS SOUTH)			
	LATITUDE = 37°03'06.26"	(37.051739)	
	LONGITUDE = 98°03'26.41"	(98.057336)	
STATE PLANE NAD 27 (KANSAS SOUTH)			
	LATITUDE = 37°03'06.26"	(37.051739)	
	LONGITUDE = 98°03'26.41"	(98.057336)	
STATE PLANE NAD 27 (KANSAS SOUTH)			
	LATITUDE = 37°03'06.26"	(37.051739)	
	LONGITUDE = 98°03'26.41"	(98.057336)	
STATE PLANE NAD 27 (KANSAS SOUTH)			
	LATITUDE = 37°03'06.26"	(37.051739)	
	LONGITUDE = 98°03'26.41"	(98.057336)	
STATE PLANE NAD 27 (KANSAS SOUTH)			
	LATITUDE = 37°03'06.26"	(37.051739)	
	LONGITUDE = 98°03'26.41"	(98.057336)	
STATE PLANE NAD 27 (KANSAS SOUTH)			
	LATITUDE = 37°03'06.26"	(37.051739)	
	LONGITUDE = 98°03'26.41"	(98.057336)	
STATE PLANE NAD 27 (KANSAS SOUTH)			
	LATITUDE = 37°03'06.26"	(37.051739)	
	LONGITUDE = 98°03'26.41"	(98.057336)	
STATE PLANE NAD 27 (KANSAS SOUTH)			
	LATITUDE = 37°03'06.26"	(37.051739)	
	LONGITUDE = 98°03'26.41"	(98.057336)	
STATE PLANE NAD 27 (KANSAS SOUTH)			
	LATITUDE = 37°03'06.26"	(37.051739)	
	LONGITUDE = 98°03'26.41"	(98.057336)	
STATE PLANE NAD 27 (KANSAS SOUTH)			
	LATITUDE = 37°03'06.26"	(37.051739)	
	LONGITUDE = 98°03'26.41"	(98.057336)	
STATE PLANE NAD 27 (KANSAS SOUTH)			
	LATITUDE = 37°03'06.26"	(37.051739)	
	LONGITUDE = 98°03'26.41"	(98.057336)	
STATE PLANE NAD 27 (KANSAS SOUTH)			
	LATITUDE = 37°03'06.26"	(37.051739)	
	LONGITUDE = 98°03'26.41"	(98.057336)	
STATE PLANE NAD 27 (KANSAS SOUTH)			
	LATITUDE = 37°03'06.26"	(37.051739)	
	LONGITUDE = 98°03'26.41"	(98.057336)	
STATE PLANE NAD 27 (KANSAS SOUTH)			
	LATITUDE = 37°03'06.26"	(37.051739)	
	LONGITUDE = 98°03'26.41"	(98.057336)	
STATE PLANE NAD 27 (KANSAS SOUTH)			
	LATITUDE = 37°03'06.26"	(37.051739)	
	LONGITUDE = 98°03'26.41"	(98.057336)	
STATE PLANE NAD 27 (KANSAS SOUTH)			
	LATITUDE = 37°03'06.26"	(37.051739)	
	LONGITUDE = 98°03'26.41"	(98.057336)	
STATE PLANE NAD 27 (KANSAS SOUTH)			
	LATITUDE = 37°03'06.26"	(37.051739)	
	LONGITUDE = 98°03'26.41"	(98.057336)	
STATE PLANE NAD 27 (KANSAS SOUTH)			
	LATITUDE = 37°03'06.26"	(37.051739)	
	LONGITUDE = 98°03'26.41"	(98.057336)	
STATE PLANE NAD 27 (KANSAS SOUTH)			
	LATITUDE = 37°03'06.26"	(37.051739)	
	LONGITUDE = 98°03'26.41"	(98.057336)	
STATE PLANE NAD 27 (KANSAS SOUTH)			
	LATITUDE = 37°03'06.26"	(37.051739)	
	LONGITUDE = 98°03'26.41"	(98.057336)	
STATE PLANE NAD 27 (KANSAS SOUTH)			
	LATITUDE = 37°03'06.26"	(37.051739)	
	LONGITUDE = 98°03'26.41"	(98.057336)	
STATE PLANE NAD 27 (KANSAS SOUTH)			
	LATITUDE = 37°03'06.26"	(37.051739)	
	LONGITUDE = 98°03'26.41"	(98.057336)	
STATE PLANE NAD 27 (KANSAS SOUTH)			
	LATITUDE = 37°03'06.26"	(37.051739)	
	LONGITUDE = 98°03'26.41"	(98.057336)	
STATE PLANE NAD 27 (KANSAS SOUTH)			
	LATITUDE = 37°03'06.26"	(37.051739)	
	LONGITUDE = 98°03'26.41"	(98.057336)	
STATE PLANE NAD 27 (KANSAS SOUTH)			
	LATITUDE = 37°03'06.26"	(37.051739)	
	LONGITUDE = 98°03'26.41"	(98.057336)	
STATE PLANE NAD 27 (KANSAS SOUTH)			
	LATITUDE = 37°03'06.26"	(37.051739)	
	LONGITUDE = 98°03'26.41"	(98.057336)	
STATE PLANE NAD 27 (KANSAS SOUTH)			
	LATITUDE = 37°03'06.26"	(37.051739)	
	LONGITUDE = 98°03'26.41"	(98.057336)	
STATE PLANE NAD 27 (KANSAS SOUTH)		</	