



DRILL STEM TEST REPORT

Prepared For: **LB Exploration LLC**

2135 2ND Road
Holyrood, Kansas 67460

ATTN: Kurt Talbott

30/32S/13W/Barber

Palmer 30 #1

Start Date: 2011.08.31 @ 15:00:00

End Date: 2011.08.31 @ 23:01:00

Job Ticket #: 15842 DST #: 1

Superior Testers Enterprises LLC
PO Box 138 Great Bend KS 67530
1-800-792-6902

Printed: 2011.08.31 @ 21:18:23



DRILL STEM TEST REPORT

LB Exploration LLC
 2135 2ND Road
 Holyrood, Kansas 67460
 ATTN: Kurt Talbott

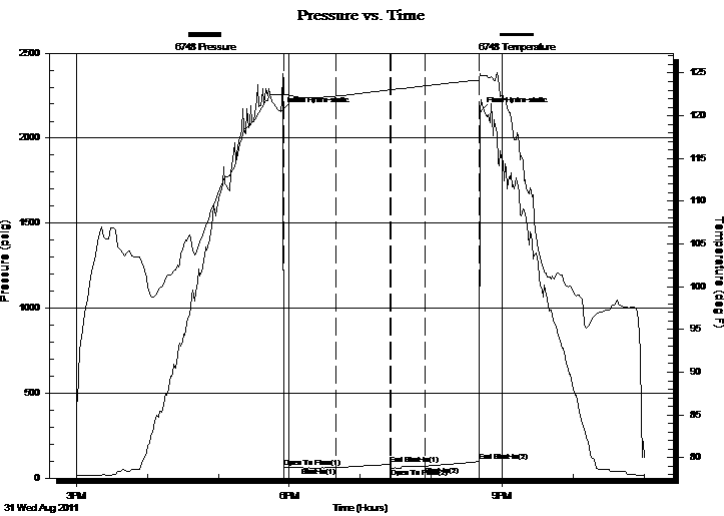
Palmer 30 #1
30/32S/13W/Barber
 Job Ticket: 15842 **DST#: 1**
 Test Start: 2011.08.31 @ 15:00:00

GENERAL INFORMATION:

Formation: Marmaton		Test Type: Conventional Bottom Hole (Initial)
Deviated: No Whipstock: ft (KB)		Tester: Ken Swinney
Time Tool Opened: 17:55:30		Unit No: 3325 Pratt/80
Time Test Ended: 23:01:00		
Interval: 4460.00 ft (KB) To 4525.00 ft (KB) (TVD)	Reference Elevations:	1820.00 ft (KB)
Total Depth: 4525.00 ft (KB) (TVD)		1807.00 ft (CF)
Hole Diameter: 7.75 inches	Hole Condition: Fair	KB to GR/CF: 13.00 ft

Serial #: 6748	Outside				
Press @ Run Depth: 72.06 psig @ 4521.78 ft (KB)	Capacity: 5000.00 psig				
Start Date: 2011.08.31	End Date: 2011.08.31	Last Calib.: 2011.08.31			
Start Time: 15:00:00	End Time: 23:01:00	Time On Btm: 2011.08.31 @ 17:53:00			
		Time Off Btm: 2011.08.31 @ 20:41:30			

TEST COMMENT: 1ST Open 45 Minutes/Weak blow /Blow built just below surface/Blow died in 35 minutes
 1ST Shut In 45 Mintues/No blow back
 2ND Open 30 Minutes/No blow /Flush tool/Didnt help
 2ND Shut In 45 Minutes/No blow back



PRESSURE SUMMARY

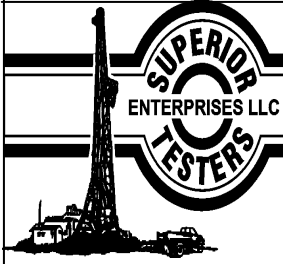
Time (Min.)	Pressure (psig)	Temp (deg F)	Annotation
0	2157.48	122.52	Initial Hydro-static
3	62.72	122.44	Open To Flow (1)
47	63.02	122.31	Shut-In(1)
92	81.08	123.04	End Shut-In(1)
93	58.47	123.05	Open To Flow (2)
122	72.06	123.51	Shut-In(2)
168	97.21	124.19	End Shut-In(2)
169	2155.97	124.92	Final Hydro-static

Recovery

Length (ft)	Description	Volume (bbl)
15.00	Mud 100%	0.22

Gas Rates

Choke (inches)	Pressure (psig)	Gas Rate (Mcf/d)



DRILL STEM TEST REPORT

LB Exploration LLC
 2135 2ND Road
 Holyrood, Kansas 67460
 ATTN: Kurt Talbott

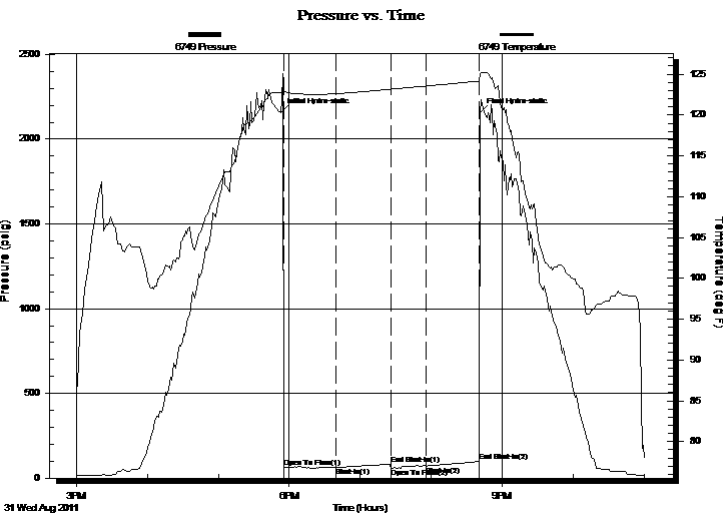
Palmer 30 #1
30/32S/13W/Barber
 Job Ticket: 15842 **DST#: 1**
 Test Start: 2011.08.31 @ 15:00:00

GENERAL INFORMATION:

Formation: **Marmaton**
 Deviated: No Whipstock: ft (KB)
 Time Tool Opened: 17:55:30
 Time Test Ended: 23:01:00
 Interval: **4460.00 ft (KB) To 4525.00 ft (KB) (TVD)**
 Total Depth: 4525.00 ft (KB) (TVD)
 Hole Diameter: 7.75 inches
 Hole Condition: Fair
 Test Type: Conventional Bottom Hole (Initial)
 Tester: Ken Swinney
 Unit No: 3325 Pratt/80
 Reference Elevations: 1820.00 ft (KB)
 1807.00 ft (CF)
 KB to GR/CF: 13.00 ft

Serial #: 6749 **Inside**
 Press @ Run Depth: 98.22 psig @ 4520.78 ft (KB) Capacity: 5000.00 psig
 Start Date: 2011.08.31 End Date: 2011.08.31 Last Calib.: 2011.08.31
 Start Time: 15:00:00 End Time: 23:01:00 Time On Btm: 2011.08.31 @ 17:53:00
 Time Off Btm: 2011.08.31 @ 20:41:30

TEST COMMENT: 1ST Open 45 Minutes/Weak blow /Blow built just below surface/Blow died in 35 minutes
 1ST Shut In 45 Minutes/No blow back
 2ND Open 30 Minutes/No blow /Flush tool/Didnt help
 2ND Shut In 45 Minutes/No blow back



PRESSURE SUMMARY

Time (Min.)	Pressure (psig)	Temp (deg F)	Annotation
0	2158.38	122.70	Initial Hydro-static
3	63.53	122.88	Open To Flow (1)
47	64.07	122.61	Shut-In(1)
93	82.25	123.17	End Shut-In(1)
93	59.13	123.16	Open To Flow (2)
123	72.28	123.56	Shut-In(2)
168	98.22	124.16	End Shut-In(2)
169	2156.98	124.90	Final Hydro-static

Recovery

Length (ft)	Description	Volume (bbl)
15.00	Mud 100%	0.22

Gas Rates

Choke (inches)	Pressure (psig)	Gas Rate (Mcf/d)



DRILL STEM TEST REPORT

TOOL DIAGRAM

LB Exploration LLC
 2135 2ND Road
 Holyrood, Kansas 67460
 ATTN: Kurt Talbott

Palmer 30 #1
30/32S/13W/Barber
 Job Ticket: 15842 **DST#: 1**
 Test Start: 2011.08.31 @ 15:00:00

Tool Information

Drill Pipe:	Length: 4445.00 ft	Diameter: 3.88 inches	Volume: 65.00 bbl	Tool Weight: 2000.00 lb
Heavy Wt. Pipe:	Length: 0.00 ft	Diameter: 0.00 inches	Volume: 0.00 bbl	Weight set on Packer: 20000.00 lb
Drill Collar:	Length: 0.00 ft	Diameter: 0.00 inches	Volume: 0.00 bbl	Weight to Pull Loose: 58000.00 lb
			<u>Total Volume: 65.00 bbl</u>	Tool Chased 1.00 ft
Drill Pipe Above KB:	13.75 ft			String Weight: Initial 51000.00 lb
Depth to Top Packer:	4460.00 ft			Final 51000.00 lb
Depth to Bottom Packer:	ft			
Interval between Packers:	64.78 ft			
Tool Length:	93.53 ft			
Number of Packers:	2	Diameter: 6.75 inches		

Tool Comments:

Tool Description	Length (ft)	Serial No.	Position	Depth (ft)	Accum. Lengths
Shut-in tool	5.00			4436.25	
Hydraulic tool	5.00			4441.25	
Change over sub	0.75			4442.00	
Jars	6.00			4448.00	
Safety Joint	2.00			4450.00	
Packer	5.00			4455.00	28.75 Bottom Of Top Packer
Packer	5.00			4460.00	
Anchor	5.00			4465.00	
change over sub	0.75			4465.75	
drill pipe	31.28			4497.03	
change over sub	0.75			4497.78	
anchor	22.00			4519.78	
Recorder	1.00	6749	Inside	4520.78	
Recorder	1.00	6748	Outside	4521.78	
bull plug	3.00			4524.78	64.78 Bottom Packers & Anchor

Total Tool Length: 93.53



DRILL STEM TEST REPORT

FLUID SUMMARY

LB Exploration LLC
2135 2ND Road
Holyrood, Kansas 67460
ATTN: Kurt Talbott

Palmer 30 #1
30/32S/13W/Barber
Job Ticket: 15842 **DST#: 1**
Test Start: 2011.08.31 @ 15:00:00

Mud and Cushion Information

Mud Type:	Gel Chem	Cushion Type:		Oil API:	deg API
Mud Weight:	9.00 lb/gal	Cushion Length:	ft	Water Salinity:	ppm
Viscosity:	48.00 sec/qt	Cushion Volume:	bbbl		
Water Loss:	11.19 in ³	Gas Cushion Type:			
Resistivity:	ohm.m	Gas Cushion Pressure:	psig		
Salinity:	5000.00 ppm				
Filter Cake:	1.00 inches				

Recovery Information

Recovery Table

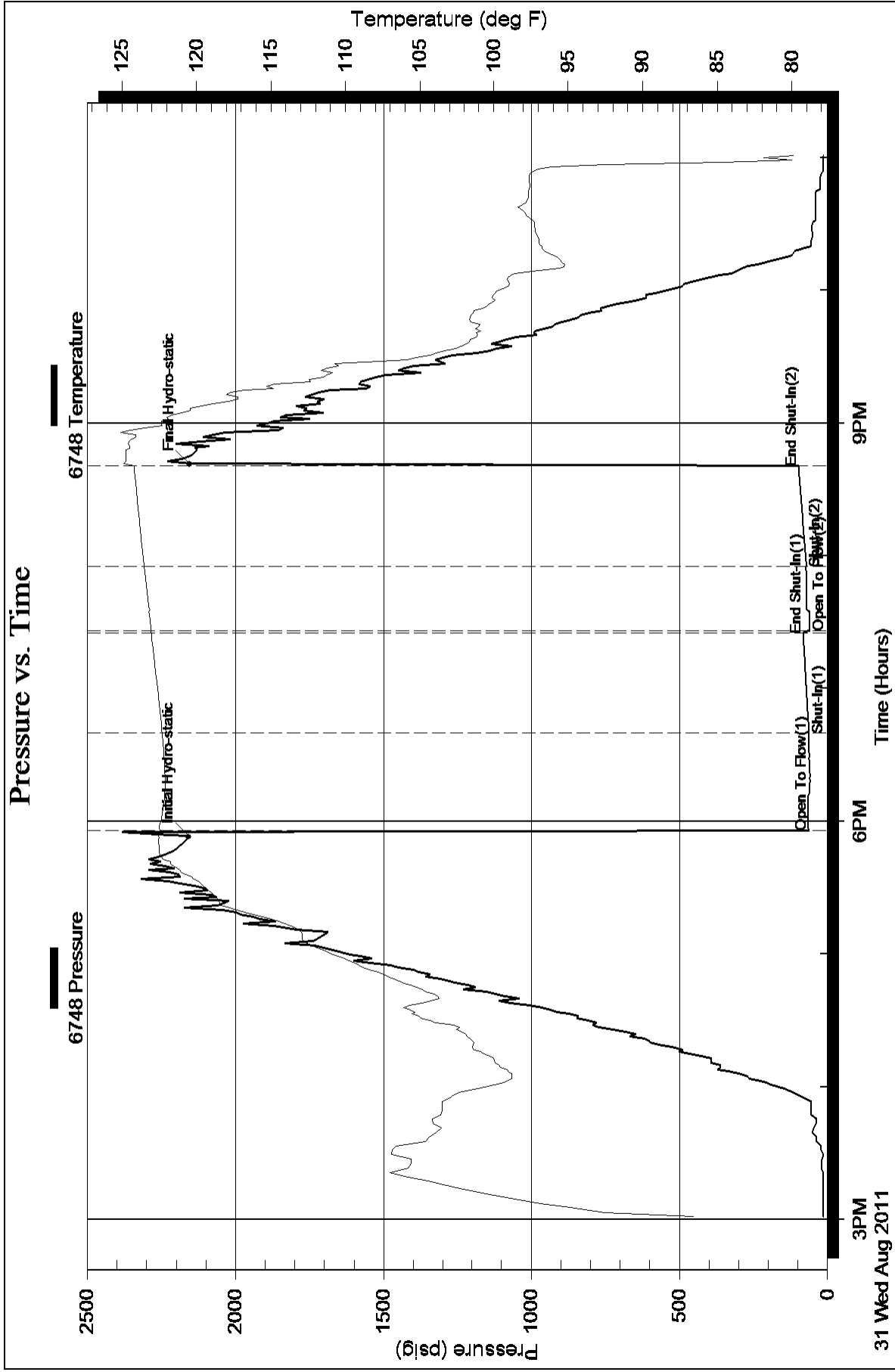
Length ft	Description	Volume bbbl
15.00	Mud 100%	0.219

Total Length: 15.00 ft Total Volume: 0.219 bbl

Num Fluid Samples: 0 Num Gas Bombs: 0 Serial #:

Laboratory Name: Laboratory Location:

Recovery Comments:



Serial #: 6749

Inside

LB Exploration LLC

30/32S/13W/Barber

DST Test Number: 1

