



DRILL STEM TEST REPORT

Prepared For: **LB Exploration LLC**

2135 2ND Road
Holyrood, Kansas 67460

ATTN: Kurt Talbott

30/32S/13W/Barber

Palmer 30 #1

Start Date: 2011.09.01 @ 07:23:00

End Date: 2011.09.01 @ 16:07:00

Job Ticket #: 15843 DST #: 2

Superior Testers Enterprises LLC
PO Box 138 Great Bend KS 67530
1-800-792-6902

Printed: 2011.09.01 @ 14:23:16



DRILL STEM TEST REPORT

LB Exploration LLC
 2135 2ND Road
 Holyrood, Kansas 67460
 ATTN: Kurt Talbott

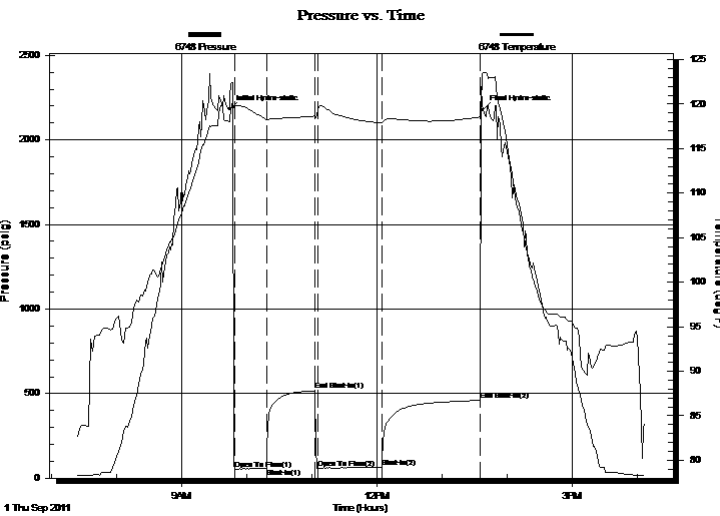
Palmer 30 #1
30/32S/13W/Barber
 Job Ticket: 15843 **DST#: 2**
 Test Start: 2011.09.01 @ 07:23:00

GENERAL INFORMATION:

Formation: **Mississippian**
 Deviated: No Whipstock: ft (KB)
 Time Tool Opened: 09:48:30
 Time Test Ended: 16:07:00
 Interval: **4529.00 ft (KB) To 4555.00 ft (KB) (TVD)**
 Total Depth: 4555.00 ft (KB) (TVD)
 Hole Diameter: 7.75 inches Hole Condition: Fair
 Test Type: Conventional Bottom Hole (Initial)
 Tester: Ken Swinney
 Unit No: 3325 Pratt/80
 Reference Elevations: 1820.00 ft (KB)
 1807.00 ft (CF)
 KB to GR/CF: 13.00 ft

Serial #: 6748 Outside
 Press @ RunDepth: 64.06 psig @ 4552.00 ft (KB) Capacity: 5000.00 psig
 Start Date: 2011.09.01 End Date: 2011.09.01 Last Calib.: 2011.09.01
 Start Time: 07:23:00 End Time: 16:07:00 Time On Btm: 2011.09.01 @ 09:44:00
 Time Off Btm: 2011.09.01 @ 13:37:30

TEST COMMENT: 1ST Open 30 Minutes/Strong blow /Blow to bottom of bucket in 45 seconds/Gas to surface 11 minutes
 1ST Shut In 45 Minutes/No blow back
 2ND Open 60 Minutes/Stong blow /Blow to bottom of bucket at open
 2ND Shut In 90 Minutes/No blow back



PRESSURE SUMMARY			
Time (Min.)	Pressure (psig)	Temp (deg F)	Annotation
0	2181.21	118.07	Initial Hydro-static
5	52.01	119.66	Open To Flow (1)
34	59.58	118.25	Shut-In(1)
79	517.42	118.67	End Shut-In(1)
82	56.34	119.34	Open To Flow (2)
140	64.06	117.90	Shut-In(2)
231	459.94	118.56	End Shut-In(2)
234	2177.66	123.49	Final Hydro-static

Recovery		
Length (ft)	Description	Volume (bbl)
75.00	Mud w with show of oil 100%	1.10

Gas Rates			
	Choke (inches)	Pressure (psig)	Gas Rate (Mcf/d)
First Gas Rate	0.75	4.21	68.02
Last Gas Rate	0.75	4.13	66.70
Max. Gas Rate	0.75	5.08	81.54



DRILL STEM TEST REPORT

LB Exploration LLC
 2135 2ND Road
 Holyrood, Kansas 67460
 ATTN: Kurt Talbott

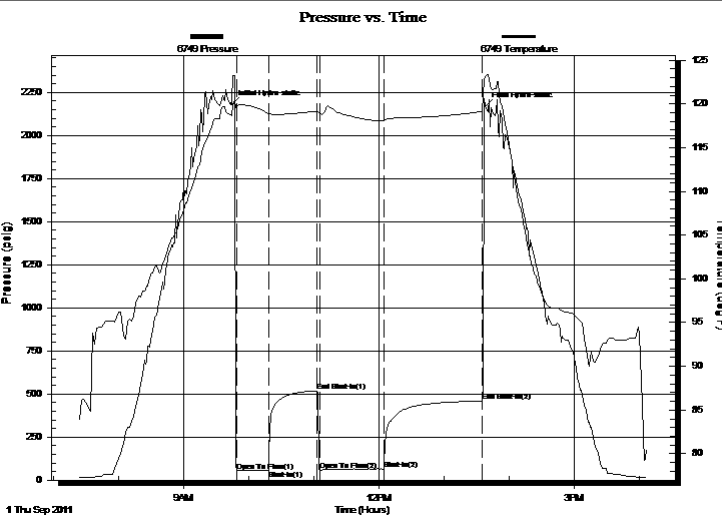
Palmer 30 #1
30/32S/13W/Barber
 Job Ticket: 15843 **DST#: 2**
 Test Start: 2011.09.01 @ 07:23:00

GENERAL INFORMATION:

Formation: **Mississippian**
 Deviated: No Whipstock: ft (KB)
 Time Tool Opened: 09:48:30
 Time Test Ended: 16:07:00
 Interval: **4529.00 ft (KB) To 4555.00 ft (KB) (TVD)**
 Total Depth: 4555.00 ft (KB) (TVD)
 Hole Diameter: 7.75 inches Hole Condition: Fair
 Test Type: Conventional Bottom Hole (Initial)
 Tester: Ken Swinney
 Unit No: 3325 Pratt/80
 Reference Elevations: 1820.00 ft (KB)
 1807.00 ft (CF)
 KB to GR/CF: 13.00 ft

Serial #: 6749 Inside
 Press @ Run Depth: 460.86 psig @ 4551.00 ft (KB) Capacity: 5000.00 psig
 Start Date: 2011.09.01 End Date: 2011.09.01 Last Calib.: 2011.09.01
 Start Time: 07:23:00 End Time: 16:07:00 Time On Btm: 2011.09.01 @ 09:44:00
 Time Off Btm: 2011.09.01 @ 13:38:00

TEST COMMENT: 1ST Open 30 Minutes/Strong blow /Blow to bottom of bucket in 45 seconds/Gas to surface 11 minutes
 1ST Shut In 45 Minutes/No blow back
 2ND Open 60 Minutes/Stong blow /Blow to bottom of bucket at open
 2ND Shut In 90 Minutes/No blow back



PRESSURE SUMMARY			
Time (Min.)	Pressure (psig)	Temp (deg F)	Annotation
0	2180.57	118.70	Initial Hydro-static
5	52.76	119.77	Open To Flow (1)
34	59.64	118.88	Shut-In(1)
79	518.44	119.19	End Shut-In(1)
82	56.90	119.02	Open To Flow (2)
140	64.39	118.02	Shut-In(2)
231	460.86	119.14	End Shut-In(2)
234	2169.94	123.14	Final Hydro-static

Recovery		
Length (ft)	Description	Volume (bbl)
75.00	Mud w with show of oil 100%	1.10

Gas Rates			
	Choke (inches)	Pressure (psig)	Gas Rate (Mcf/d)
First Gas Rate	0.75	4.21	68.02
Last Gas Rate	0.75	4.13	66.70
Max. Gas Rate	0.75	5.08	81.54



DRILL STEM TEST REPORT

TOOL DIAGRAM

LB Exploration LLC
 2135 2ND Road
 Holyrood, Kansas 67460
 ATTN: Kurt Talbott

Palmer 30 #1
30/32S/13W/Barber
 Job Ticket: 15843 **DST#: 2**
 Test Start: 2011.09.01 @ 07:23:00

Tool Information

Drill Pipe:	Length: 4525.00 ft	Diameter: 3.88 inches	Volume: 66.17 bbl	Tool Weight: 2000.00 lb
Heavy Wt. Pipe:	Length: 0.00 ft	Diameter: 0.00 inches	Volume: 0.00 bbl	Weight set on Packer: 20000.00 lb
Drill Collar:	Length: 0.00 ft	Diameter: 0.00 inches	Volume: 0.00 bbl	Weight to Pull Loose: 60000.00 lb
			<u>Total Volume: 66.17 bbl</u>	Tool Chased 1.00 ft
Drill Pipe Above KB:	25.00 ft			String Weight: Initial 51000.00 lb
Depth to Top Packer:	4529.00 ft			Final 51000.00 lb
Depth to Bottom Packer:	ft			
Interval between Packers:	26.00 ft			
Tool Length:	55.00 ft			
Number of Packers:	2	Diameter: 6.75 inches		

Tool Comments:

Tool Description	Length (ft)	Serial No.	Position	Depth (ft)	Accum. Lengths
Shut-in tool	5.00			4505.00	
Hydraulic tool	5.00			4510.00	
Change over sub	1.00			4511.00	
Jars	6.00			4517.00	
Safety Joint	2.00			4519.00	
Packer	5.00			4524.00	29.00 Bottom Of Top Packer
Packer	5.00			4529.00	
Anchor	21.00			4550.00	
Recorder	1.00	6749	Inside	4551.00	
Recorder	1.00	6748	Outside	4552.00	
Bullnose	3.00			4555.00	26.00 Bottom Packers & Anchor

Total Tool Length: 55.00



DRILL STEM TEST REPORT

FLUID SUMMARY

LB Exploration LLC
2135 2ND Road
Holyrood, Kansas 67460
ATTN: Kurt Talbott

Palmer 30 #1
30/32S/13W/Barber
Job Ticket: 15843 **DST#: 2**
Test Start: 2011.09.01 @ 07:23:00

Mud and Cushion Information

Mud Type: Gel Chem	Cushion Type:	Oil API:	deg API
Mud Weight: 9.00 lb/gal	Cushion Length: ft	Water Salinity:	ppm
Viscosity: 48.00 sec/qt	Cushion Volume: bbl		
Water Loss: 11.20 in ³	Gas Cushion Type:		
Resistivity: ohm.m	Gas Cushion Pressure: psig		
Salinity: 5000.00 ppm			
Filter Cake: 1.00 inches			

Recovery Information

Recovery Table

Length ft	Description	Volume bbl
75.00	Mud with show of oil 100%	1.097

Total Length: 75.00 ft Total Volume: 1.097 bbl

Num Fluid Samples: 0 Num Gas Bombs: 0 Serial #:

Laboratory Name: Laboratory Location:

Recovery Comments:



DRILL STEM TEST REPORT

GAS RATES

LB Exploration LLC

Palmer 30 #1

2135 2ND Road
Holyrood, Kansas 67460

30/32S/13W/Barber

Job Ticket: 15843

DST#: 2

ATTN: Kurt Talbott

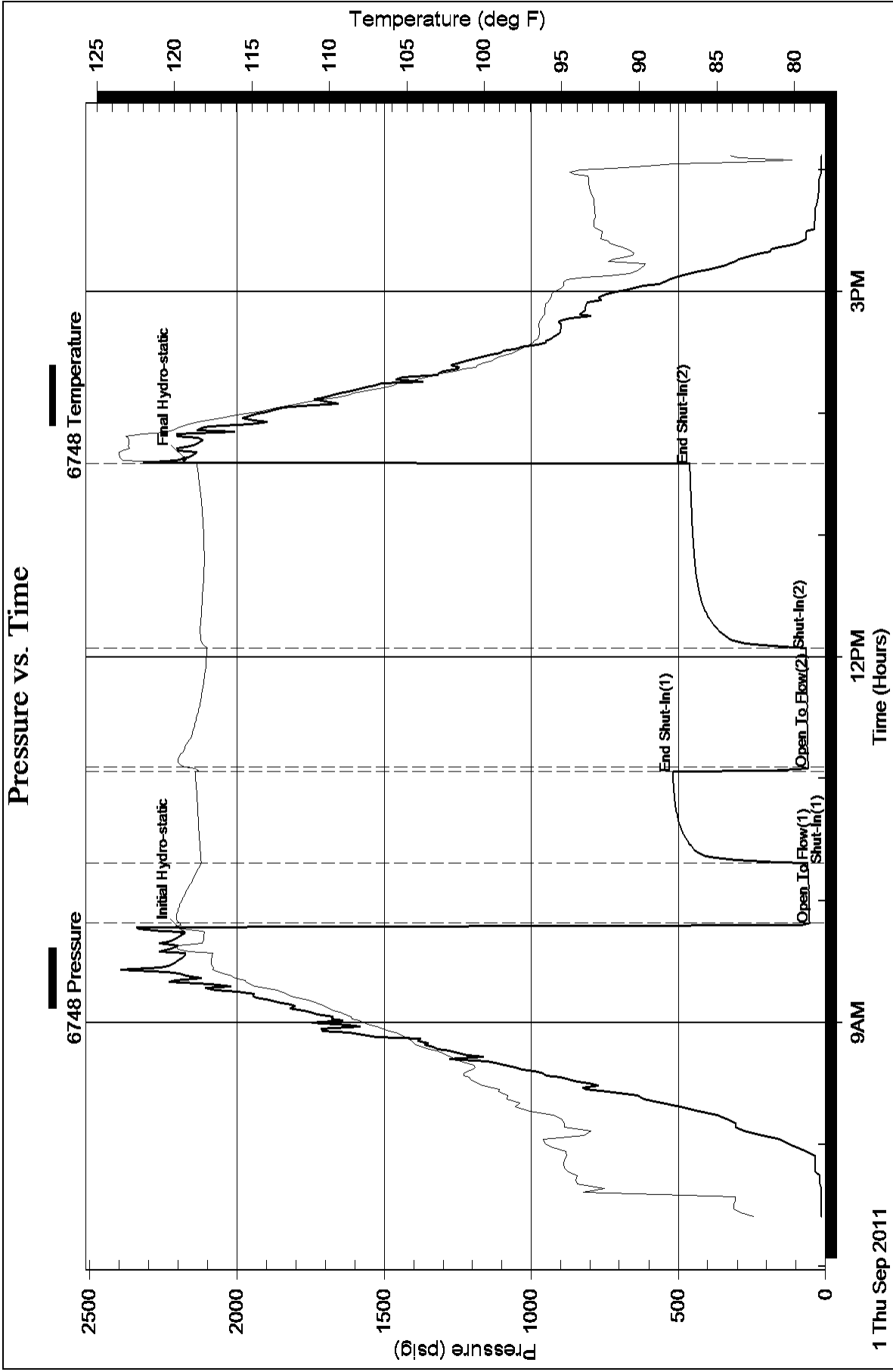
Test Start: 2011.09.01 @ 07:23:00

Gas Rates Information

Temperature: 59 (deg F)
Relative Density: 0.65
Z Factor: 0.8

Gas Rates Table

Flow Period	Elapsed Time	Choke (inches)	Pressure (psig)	Gas Rate (Mcf/d)
1	20	0.75	4.21	68.02
1	20	0.75	4.21	68.02
1	30	0.75	4.21	68.02
2	10	0.75	5.08	81.54
2	20	0.75	4.67	75.13
2	30	0.75	4.31	69.51
2	40	0.75	4.13	66.70



Pressure vs. Time

