

T34S, R7W, 6th P.M.

SGOMI

Concrete Stone
NAD 27 Kansas South
N: 155885.83
E: 2118774.51

589'40'18"W - 5278.89' (Meas.)

2012 UELS Alum. Cap
0.2' Below Ground,
In Road
NAD 27 Kansas South
N: 155938.12
E: 21124053.30

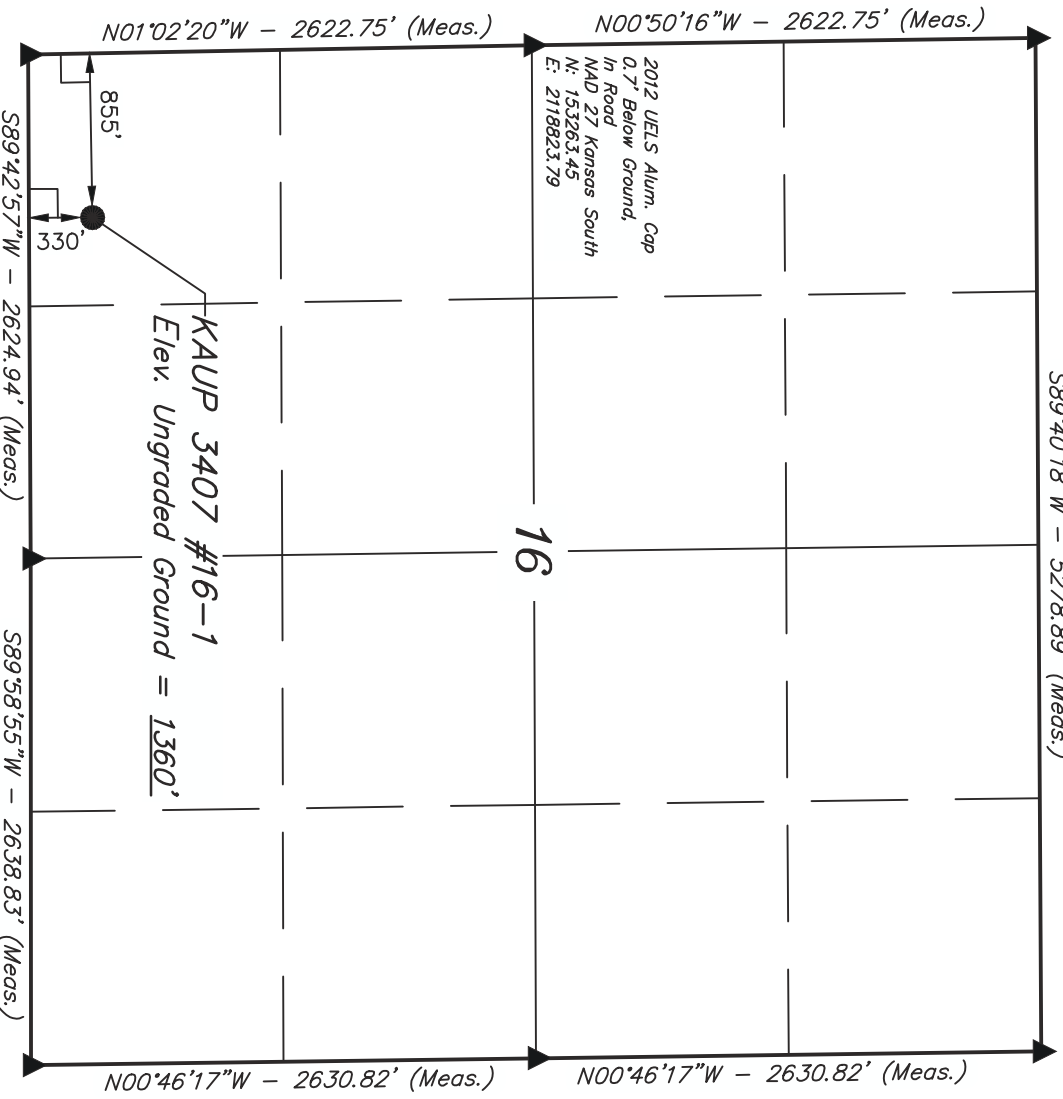
Well location, KAUP 3407 #16-1, located as shown in the SW 1/4 SW 1/4 of Section 16, T34S, R7W, 6th P.M., Harper County, Kansas.

BASIS OF ELEVATION

SPOT ELEVATION LOCATED AT THE NORTHEAST CORNER OF SECTION 22, T33S, R7W, 6th P.M. TAKEN FROM THE ANTHONY, QUADRANGLE, KANSAS, HARPER COUNTY, 7.5 MINUTE QUAD (TOPOGRAPHIC MAP) PUBLISHED BY THE UNITED STATES DEPARTMENT OF THE INTERIOR, GEOLOGICAL SURVEY. SAID ELEVATION IS MARKED AS BEING 1348 FEET.

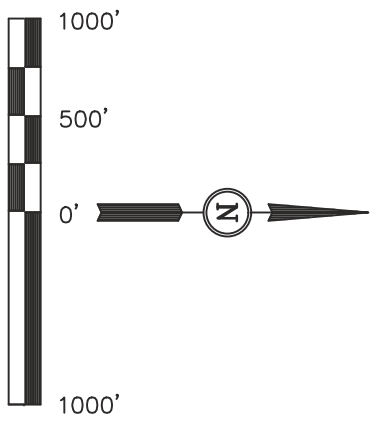
BASIS OF BEARINGS

BASIS OF BEARINGS IS A G.P.S. OBSERVATION.



2012 UELS Alum. Cap
0.2' Below Ground,
In Road
NAD 27 Kansas South
N: 1553307.61
E: 2124099.70

5/8" Rebar 0.4'
Below Ground,
In Gravel Road
NAD 27 Kansas South
N: 150677.09
E: 2124146.09



CERTIFICATE
THIS IS TO CERTIFY THAT THE ABOVE PLAT WAS PREPARED FROM FIELD NOTES OF ACTUAL SURVEYS MADE BY ME OR UNDER MY SUPERVISION AND THAT THE SAME ARE TRUE AND CORRECT TO THE BEST OF MY KNOWLEDGE AND BELIEF.

REGISTERED LAND SURVEYOR
REGISTRATION NO. 1454
STATE OF KANSAS
J. P. B. L. C. A. G.
REV: 10-22-12 C.A.G.

Large Spike
0.3' Below Ground,
In Road
NAD 27 Kansas South
N: 150641.25
E: 2118882.28

5/8" Rebar 0.3' High,
Fence Post
NAD 27 Kansas South
N: 150665.23
E: 2121507.20

LEGEND:

- = 90° SYMBOL
- = PROPOSED WELL HEAD.
- ▲ = SECTION CORNERS LOCATED.

NAD 83 (#16-1 SURFACE LOCATION)
LATITUDE = 37°04'50.19" (37.080608)
LONGITUDE = 98°05'23.80" (98.089944)
NAD 27 (#16-1 SURFACE LOCATION)
LATITUDE = 37°04'50.10" (37.080583)
LONGITUDE = 98°05'22.57" (98.089863)
STATE PLANE NAD 27 (KANSAS SOUTH)
N: 150979.29 E: 2119730.03

<p>UNTARH ENGINEERING & LAND SURVEYING 85 SOUTH 200 EAST - VERNAL, UTAH 84078 (435) 789-1017</p>		
SCALE	DATE SURVEYED:	DATE DRAWN:
1" = 1000'	06-27-12	07-12-12
PARTY	REFERENCES	
J.P. B.L. C.A.G.	G.L.O. PLAT	
WEATHER	FILE	
HOT	SGOMI	