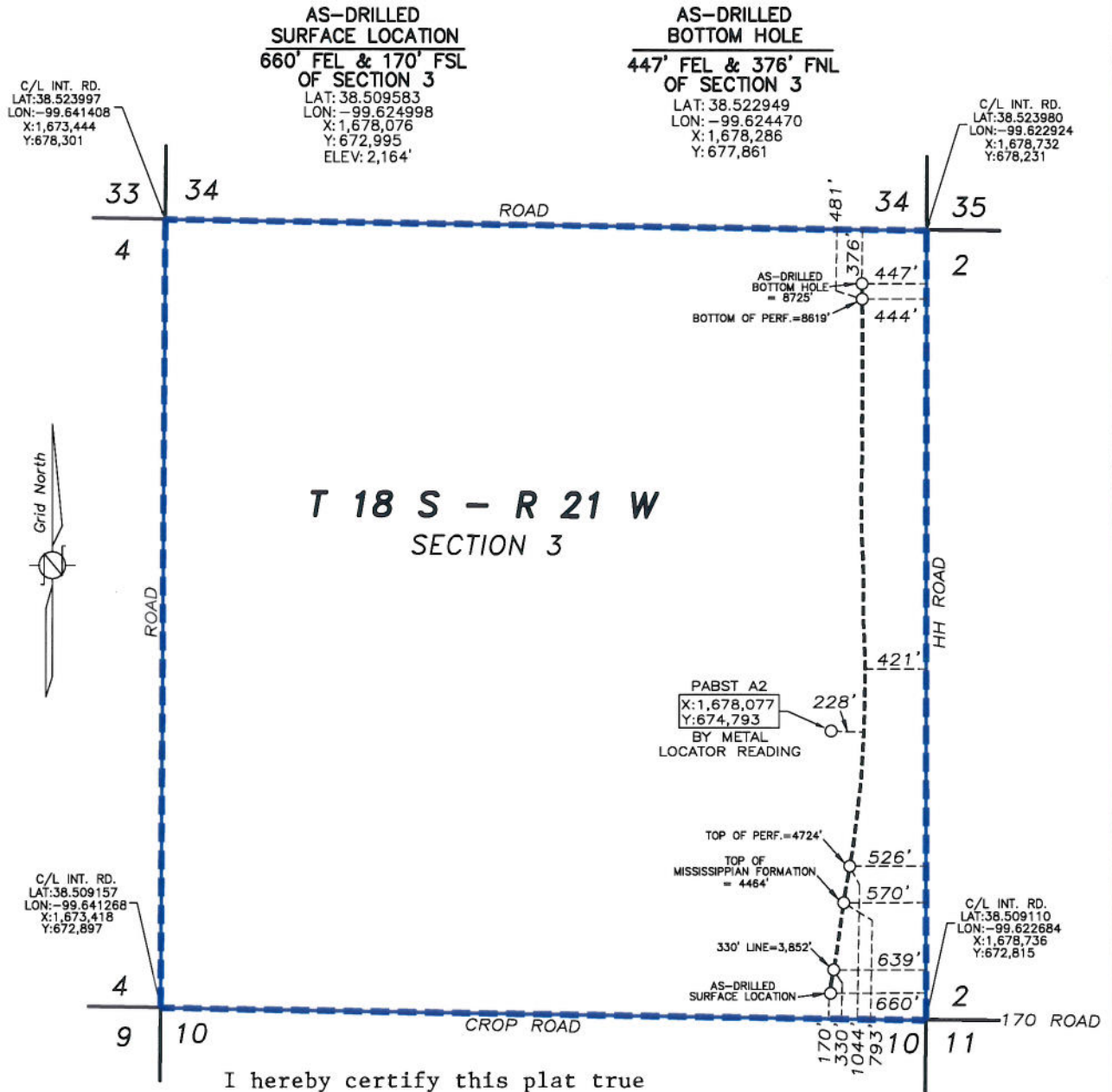


THIS DRAWING DOES NOT REPRESENT A BOUNDARY SURVEY. DISTANCES, COORDINATES AND BEARINGS SHOWN ARE NOT INTENDED TO BE DEFINITIVE IN ESTABLISHING ACTUAL TITLE BOUNDARIES. THIS DRAWING IS FOR CONSTRUCTION PURPOSES ONLY.
 All Bearings, Distances, and Coordinates shown hereon are based on the Kansas State Plane Coordinate System, N.A.D. 27 Datum, South Zone.



I hereby certify this plat true and correct to the best of my knowledge and belief.

Sharon Cook

Sharon Cook, Regulatory Adv **AS-DRILLED PLAT**
REVIEW COPY ENCANA OIL & GAS (USA) INC.
PABST FARM 3H-2
NESS COUNTY, KANSAS
SCALE: 1" = 1000'

--- = UNIT LINE

REV: 10-1-2012
 REV: 9-25-2012
 DATE: 7-31-2012