

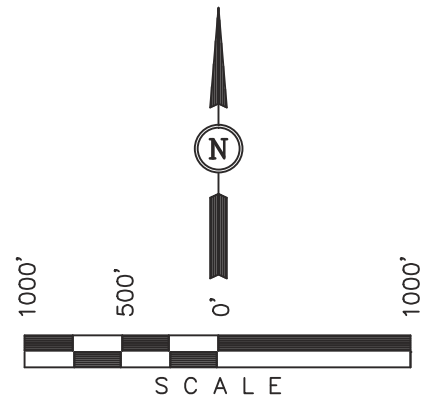
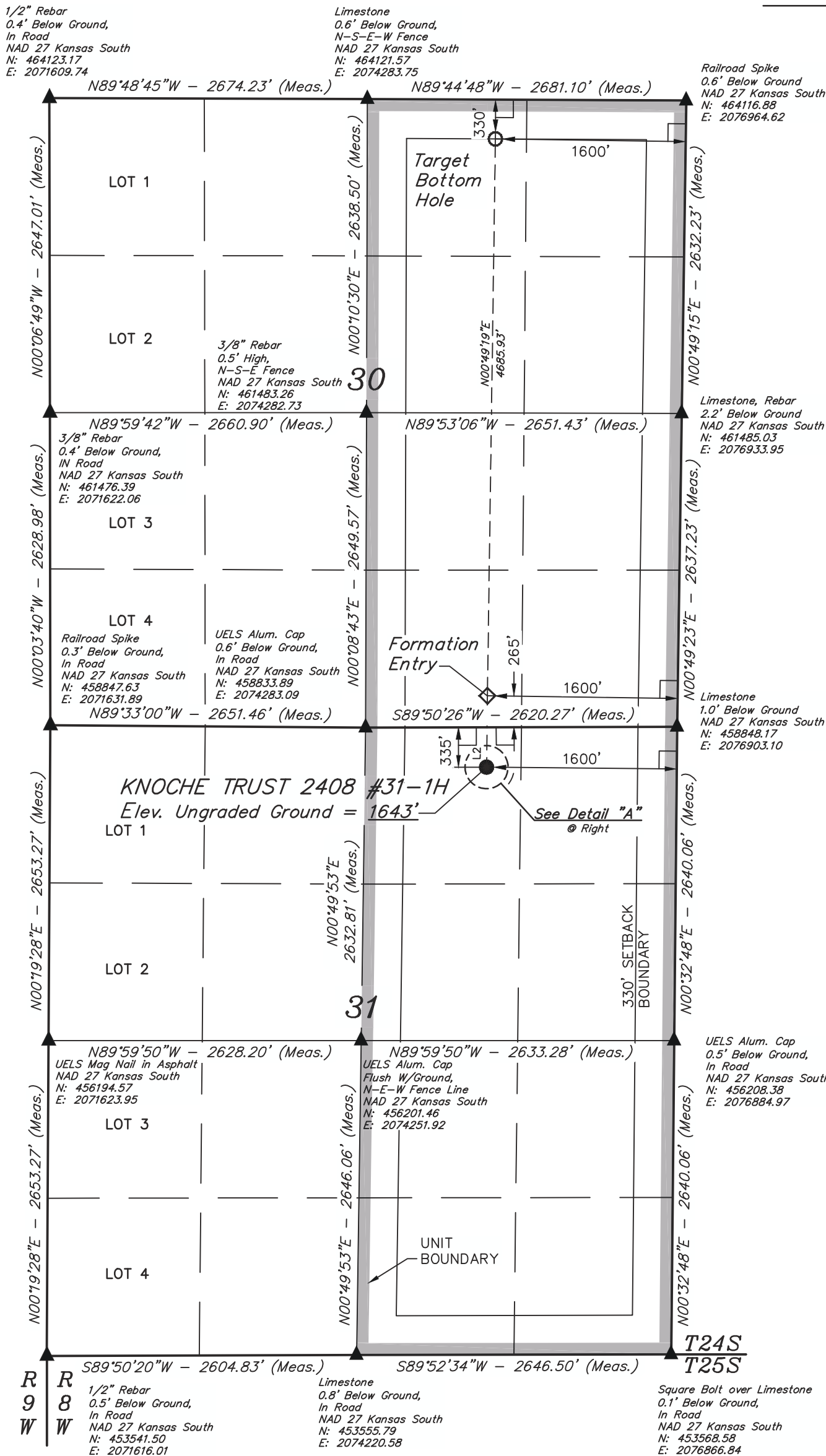
Well location, KNOCHE TRUST 2408 #31-1H, located as shown in the NW 1/4 NE 1/4 of Section 31, T24S, R8W, 6th P.M., Reno County, Kansas.

BASIS OF ELEVATION

SPOT ELEVATION LOCATED AT THE SOUTHWEST CORNER OF SECTION 18, T23S, R8W, 6th P.M. TAKEN FROM THE ALDEN SE, QUADRANGLE, KANSAS, RENO COUNTY, 7.5 MINUTE QUAD (TOPOGRAPHIC MAP) PUBLISHED BY THE UNITED STATES DEPARTMENT OF THE INTERIOR, GEOLOGICAL SURVEY, SAID ELEVATION IS MARKED AS BEING 1688 FEET.

BASIS OF BEARINGS

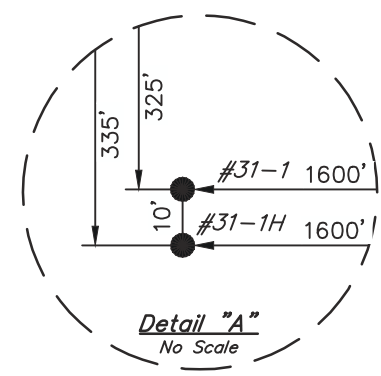
BASIS OF BEARINGS IS A G.P.S. OBSERVATION.



LINE TABLE		
LINE	DIRECTION	LENGTH
L2	N00°38'56"E	600.20'

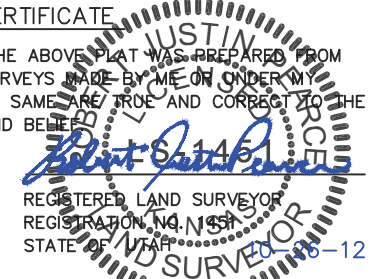
LEGEND:

- └─┘ = 90° SYMBOL
- = PROPOSED WELL HEAD.
- ▲ = SECTION CORNERS LOCATED.



CERTIFICATE

THIS IS TO CERTIFY THAT THE ABOVE PLAT WAS PREPARED FROM FIELD NOTES OF ACTUAL SURVEYS MADE BY ME OR UNDER MY SUPERVISION AND THAT THE SAME ARE TRUE AND CORRECT TO THE BEST OF MY KNOWLEDGE AND BELIEF.



<b>UINTAH ENGINEERING &amp; LAND SURVEYING</b> 85 SOUTH 200 EAST - VERNAL, UTAH 84078 (435) 789-1017		
SCALE 1" = 1000'	DATE SURVEYED: 10-11-12	DATE DRAWN: 10-16-12
PARTY B.L. T.B. C.A.G.	REFERENCES G.L.O. PLAT	
WEATHER WARM	FILE SGOMI	

NAD 83 (#31-1H TARGET BOTTOM HOLE)	NAD 83 (#31-1H FORMATION ENTRY)	NAD 83 (#31-1H SURFACE LOCATION)
LATITUDE = 37°56'24.50" (37.940139) LONGITUDE = 98°14'20.49" (98.239025)	LATITUDE = 37°55'38.18" (37.927272) LONGITUDE = 98°14'21.33" (98.239258)	LATITUDE = 37°55'32.24" (37.925622) LONGITUDE = 98°14'21.42" (98.239283)
NAD 27 (#31-1H TARGET BOTTOM HOLE)	NAD 27 (#31-1H FORMATION ENTRY)	NAD 27 (#31-1H SURFACE LOCATION)
LATITUDE = 37°56'24.45" (37.940125) LONGITUDE = 98°14'19.25" (98.238681)	LATITUDE = 37°55'38.13" (37.927258) LONGITUDE = 98°14'20.10" (98.238917)	LATITUDE = 37°55'32.19" (37.925608) LONGITUDE = 98°14'20.18" (98.238939)
STATE PLANE NAD 27 (KANSAS SOUTH) N: 463789.71 E: 2075360.83	STATE PLANE NAD 27 (KANSAS SOUTH) N: 459104.45 E: 2075306.12	STATE PLANE NAD 27 (KANSAS SOUTH) N: 458504.31 E: 2075300.93