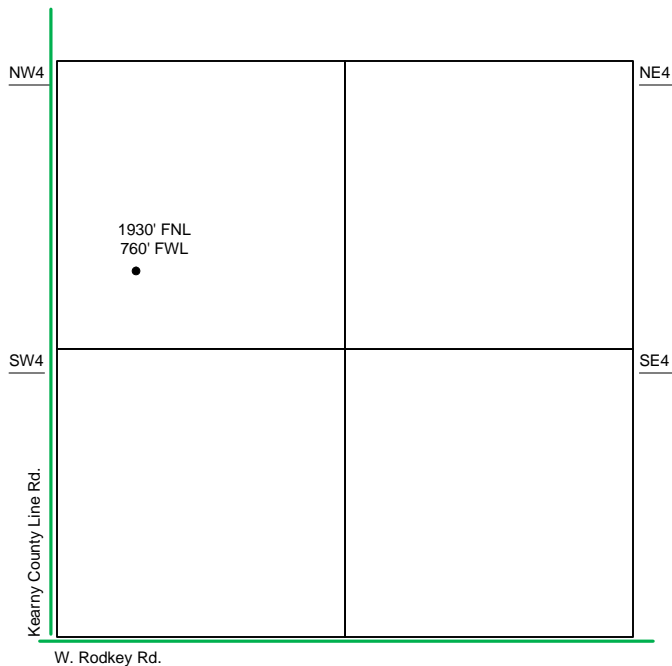


Proposed Plan of Construction

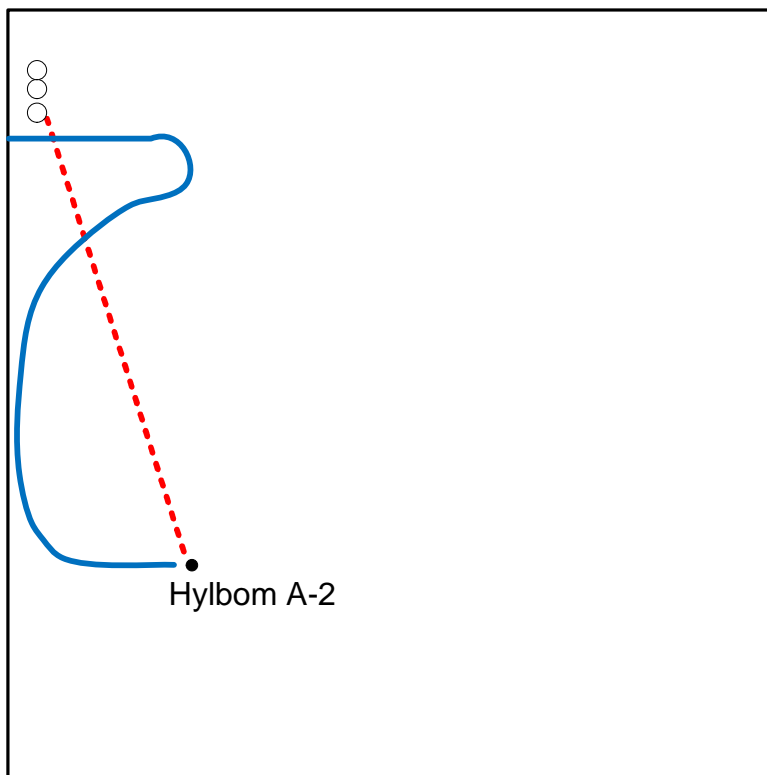
Hylbom A-2
Sec 30 T23S-R34W
Finney County, KS



Sec 30 - T23S - R34W

NW/4

The Tank Battery for the Hylbom A-2 is located in the NW of the NW quarter.



Proposed Details of
NW/4 Sec 30 -T23S -R34W

Note-Drawing **Not** to Scale

Proposed Site Diagram
Hylbom A-2
October 29, 2012

